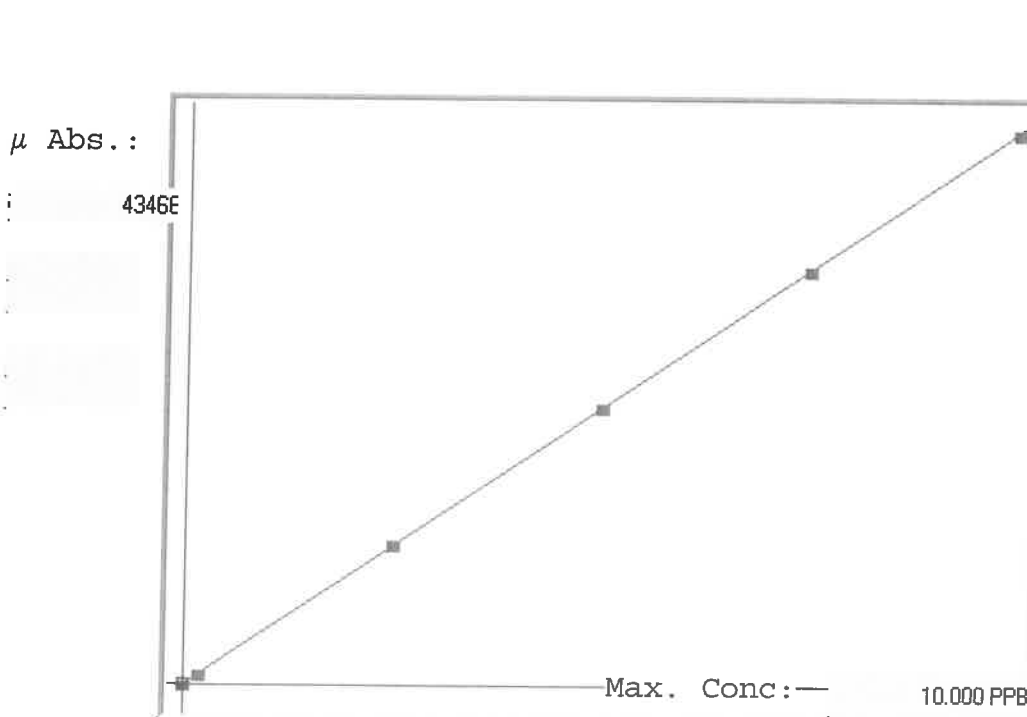


LB136901

7470A INSTRUMENT ID: CV1



A= 0.0000e+000

B= 2.2958e-004

C= -8.7707e-003

Rho= 0.9999777

Accept=Accepted

Std ID	Conc.	Calc.	Dev.	Mean	SD or %RSD	Rep 1	Rep 2	Rep 3	Rep 4	Rep 5	%D
0.0	0.000	0.003	0.003	50	0.000	50	0				
0.2	0.200	0.164	-0.036	754	0.0 %	754					-18
2.5	2.500	2.518	0.018	11007	0.0 %	11007	0				1
5.0	5.000	5.031	0.031	21953	0.0 %	21953					1
7.5	7.500	7.513	0.013	32764	0.0 %	32764					0
10.0	10.000	9.970	-0.030	43466	0.0 %	43466					0

LB136901 INSTRUMENT ID : CV1

Method: 7470A

Operator: Admin

Date of Analysis: 21 Aug 2025 08:23:00

Type	Sample ID	Extended ID	Conc.	µ Abs.	Units	Type	Std Conc	Method	Date
S	0.0 - 1	50	-	50	PPB	Std	0.0000	7470A	21 Aug 2025 08:41:58
S	0.2 - 1	50.2	-	754	PPB	Std	0.2000	7470A	21 Aug 2025 08:44:15
S	2.5 - 1	52.5	-	11007	PPB	Std	2.5000	7470A	21 Aug 2025 08:46:33
S	5.0 - 1	55	-	21953	PPB	Std	5.0000	7470A	21 Aug 2025 08:48:50
S	7.5 - 1	57.5	-	32764	PPB	Std	7.5000	7470A	21 Aug 2025 08:51:06
S	10.0 - 1	510	-	43466	PPB	Std	10.0000	7470A	21 Aug 2025 08:56:07
U	ICV27 - 1	ICV27	3.7231	16255	PPB	SMPL	-7470A		21 Aug 2025 08:59:03
U	ICB27 - 1	ICB27	-0.0533	-194	PPB	SMPL	-7470A		21 Aug 2025 09:01:18
U	CCV84 - 1	CCV84	4.9282	21504	PPB	SMPL	-7470A		21 Aug 2025 09:03:33
U	CCB84 - 1	CCB84	-0.0795	-308	PPB	SMPL	-7470A		21 Aug 2025 09:05:49
U	CRA - 1	CRA	0.2298	1039	PPB	SMPL	-7470A		21 Aug 2025 09:08:05
U	HighStd - 1	HighStd	9.9764	43493	PPB	SMPL	-7470A		21 Aug 2025 09:10:20
U	ChkStd - 1	ChkStd	6.5623	28622	PPB	SMPL	-7470A		21 Aug 2025 09:12:36
U	PB169327BL - 1	PBW	-0.0694	-264	PPB	SMPL	-7470A		21 Aug 2025 09:14:54
U	PB169327BS - 1	LCSW	4.1772	18233	PPB	SMPL	-7470A		21 Aug 2025 09:19:51
U	Q2869-01 - 1	MW-19B-71.5-081325	-0.0526	-191	PPB	SMPL	-7470A		21 Aug 2025 09:22:08
U	Q2869-01DUP - 1	MW-19B-71.5-081325DUP	-0.0285	-86	PPB	SMPL	-7470A		21 Aug 2025 09:24:25
U	Q2869-01MS - 1	MW-19B-71.5-081325MS	4.1783	18238	PPB	SMPL	-7470A		21 Aug 2025 09:26:42
U	Q2869-01MSD - 1	MW-19B-71.5-081325MSD	4.1292	18024	PPB	SMPL	-7470A		21 Aug 2025 09:31:39
U	Q2869-05 - 1	MW-19B-71.5-081325-FD	0.1092	514	PPB	SMPL	-7470A		21 Aug 2025 09:33:55
U	CCV85 - 1	CCV85	4.8366	21105	PPB	SMPL	-7470A		21 Aug 2025 09:36:12
U	CCB85 - 1	CCB85	-0.0448	-157	PPB	SMPL	-7470A		21 Aug 2025 09:38:30
U	Q2869-07 - 1	EB01-081325	0.0344	188	PPB	SMPL	-7470A		21 Aug 2025 09:40:47
U	Q2878-01 - 1	MW-18B-57.5-081325	0.0711	348	PPB	SMPL	-7470A		21 Aug 2025 09:43:02
U	Q2890-01 - 1	60296	0.2906	1304	PPB	SMPL	-7470A		21 Aug 2025 09:45:18
U	Q2890-02 - 1	60295	-0.0937	-370	PPB	SMPL	-7470A		21 Aug 2025 09:47:36
U	Q2890-03 - 1	60272	0.0326	180	PPB	SMPL	-7470A		21 Aug 2025 09:49:54
U	Q2906-01 - 1	3409	-0.0014	32	PPB	SMPL	-7470A		21 Aug 2025 09:52:10
U	Q2909-03 - 1	4066	0.2103	954	PPB	SMPL	-7470A		21 Aug 2025 09:54:27
U	Q2909-04 - 1	4067	0.1786	816	PPB	SMPL	-7470A		21 Aug 2025 09:56:43
U	Q2869-01LX5 - 1		-0.0976	-387	PPB	SMPL	-7470A		21 Aug 2025 10:02:18
U	Q2869-01A - 1		3.3027	14424	PPB	SMPL	-7470A		21 Aug 2025 10:07:12
U	CCV86 - 1	CCV86	4.9952	21796	PPB	SMPL	-7470A		21 Aug 2025 10:12:04
U	CCB86 - 1	CCB86	-0.0806	-313	PPB	SMPL	-7470A		21 Aug 2025 10:14:19