

Data Path : Z:\pestpcbsrv\HPCHEM1\ECD_S\Data\PS081925\
 Data File : PS031496.D
 Signal(s) : Signal #1: ECD1A.ch Signal #2: ECD2B.ch
 Acq On : 19 Aug 2025 17:32
 Operator : AR\AJ
 Sample : PB169287BS
 Misc :
 ALS Vial : 5 Sample Multiplier: 1

Instrument :
 ECD_S
ClientSampleId :
 PB169287BS

Manual Integrations
APPROVED
 Reviewed By :Abdul Mirza 08/20/2025
 Supervised By :mohammad ahmed 08/21/2025

Integration File signal 1: autoint1.e
 Integration File signal 2: autoint2.e
 Quant Time: Aug 20 06:23:29 2025
 Quant Method : Z:\pestpcbsrv\HPCHEM1\ECD_S\Method\PS080725.M
 Quant Title : 8080.M
 QLast Update : Fri Aug 08 03:17:54 2025
 Response via : Initial Calibration
 Integrator: ChemStation

Volume Inj. : 1 µl
 Signal #1 Phase : ZB-MR1 Signal #2 Phase: ZB-MR2
 Signal #1 Info : 30M x 0.32mm x0.5 Signal #2 Info : 30M x 0.32mm x 0.25µm

Compound	RT#1	RT#2	Resp#1	Resp#2	ng/ml	ng/ml

System Monitoring Compounds						
4) S 2,4-DCAA	7.289	7.744	1879.4E6	448.0E6	592.123	530.002
Target Compounds						
1) T Dalapon	2.672	2.693	2466.0E6	1200.2E6	469.815	451.023
2) T 3,5-DICHL...	6.455	6.695	2617.4E6	723.2E6	554.723	534.933
3) T 4-Nitroph...	7.098	7.294	559.4E6	584.4E6	542.249	464.957
5) T DICAMBA	7.473	7.940	7731.8E6	2931.4E6	553.597	515.850
6) T MCPP	7.650	8.035	403.4E6	98063858	50.149	55.471m
7) T MCPA	7.799	8.283	522.1E6	133.4E6	52.413	47.542
8) T DICHLORPROP	8.182	8.660	1764.2E6	690.9E6	556.088	517.545
9) T 2,4-D	8.418	9.001	1607.4E6	748.0E6	558.741	524.087m
10) T Pentachlo...	8.713	9.510	28461.0E6	19183.9E6	592.783	550.812
11) T 2,4,5-TP ...	9.291	9.895	10281.4E6	7022.1E6	573.618	535.381
12) T 2,4,5-T	9.588	10.324	8419.1E6	6081.5E6	574.636	513.648
13) T 2,4-DB	10.165	10.893	1028.4E6	451.7E6	535.152	468.111
14) T DINOSEB	11.362	11.269	7226.6E6	4987.7E6	569.987	527.414
15) T Picloram	11.193	12.393	6221.3E6	7413.8E6	476.578	422.929
16) T DCPA	11.662	12.310	13480.4E6	11308.9E6	591.784	574.045m

(f)=RT Delta > 1/2 Window (#)=Amounts differ by > 25% (m)=manual int.

Data Path : Z:\pestpcbsrv\HPCHEM1\ECD_S\Data\PS081925\
 Data File : PS031496.D
 Signal(s) : Signal #1: ECD1A.ch Signal #2: ECD2B.ch
 Acq On : 19 Aug 2025 17:32
 Operator : AR\AJ
 Sample : PB169287BS
 Misc :
 ALS Vial : 5 Sample Multiplier: 1

Instrument :

ECD_S

Client Sample Id :

PB169287BS

Manual Integrations

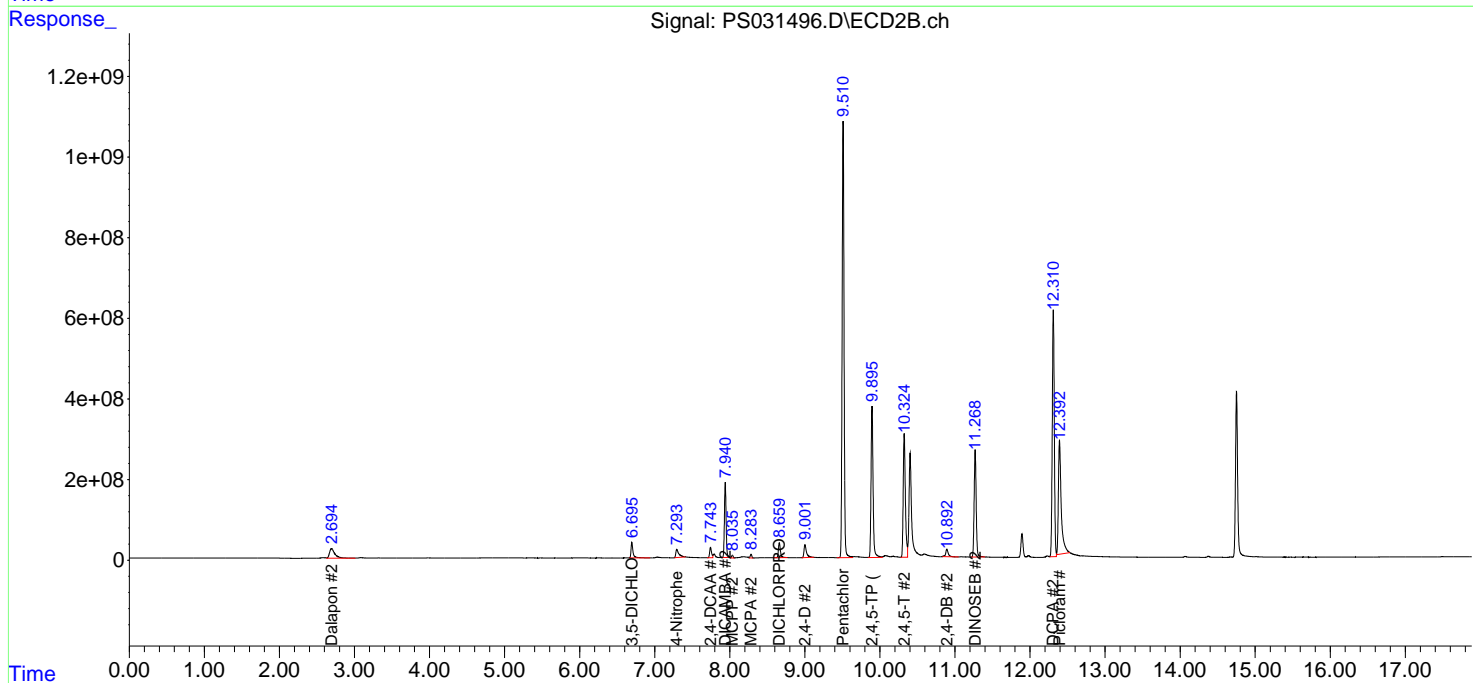
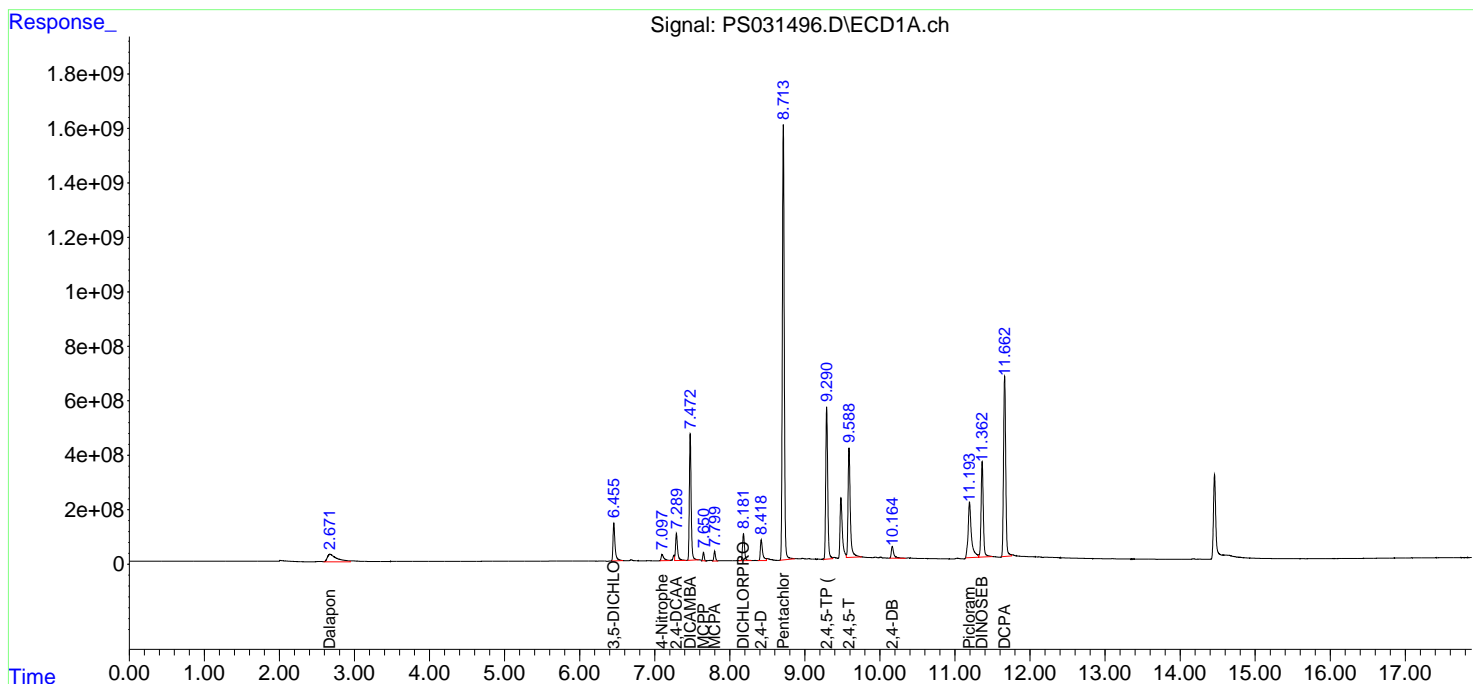
APPROVED

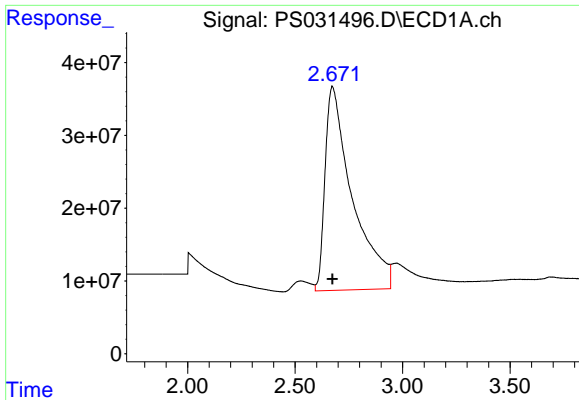
Reviewed By :Abdul Mirza 08/20/2025

Supervised By :mohammad ahmed 08/21/2025

Integration File signal 1: autoint1.e
 Integration File signal 2: autoint2.e
 Quant Time: Aug 20 06:23:29 2025
 Quant Method : Z:\pestpcbsrv\HPCHEM1\ECD_S\Method\PS080725.M
 Quant Title : 8080.M
 QLast Update : Fri Aug 08 03:17:54 2025
 Response via : Initial Calibration
 Integrator: ChemStation

Volume Inj. : 1 µl
 Signal #1 Phase : ZB-MR1 Signal #2 Phase: ZB-MR2
 Signal #1 Info : 30M x 0.32mm x0.5 Signal #2 Info : 30M x 0.32mm x 0.25µm





#1 Dalapon

R.T.: 2.672 min
 Delta R.T.: -0.002 min
 Response: 2466028144
 Conc: 469.81 ng/ml

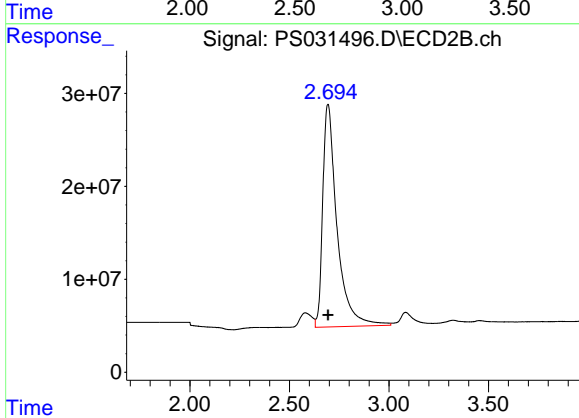
Instrument :

ECD_S

ClientSampleId :
 PB169287BS

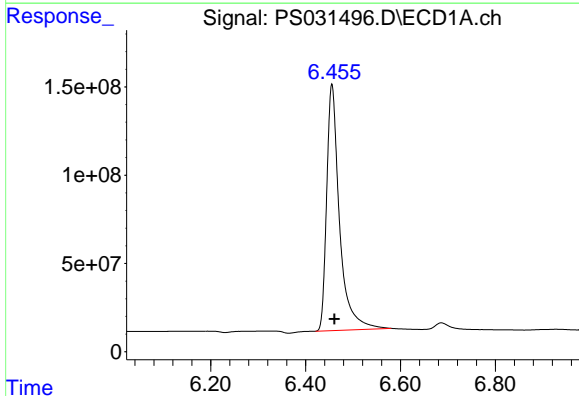
Manual Integrations
 APPROVED

Reviewed By :Abdul Mirza 08/20/2025
 Supervised By :mohammad ahmed 08/21/2025



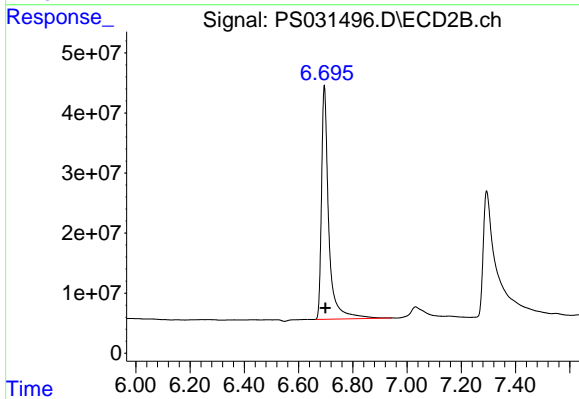
#1 Dalapon

R.T.: 2.693 min
 Delta R.T.: -0.002 min
 Response: 1200177924
 Conc: 451.02 ng/ml



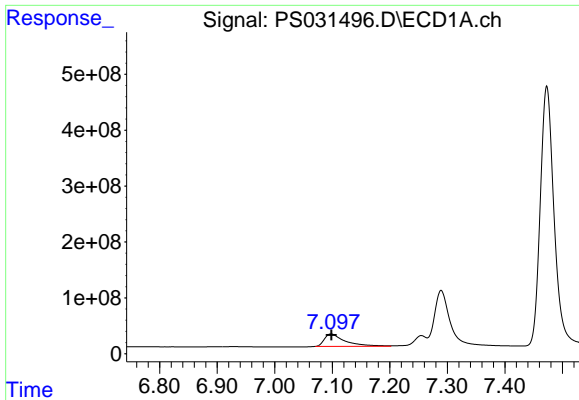
#2 3,5-DICHLOROBENZOIC ACID

R.T.: 6.455 min
 Delta R.T.: -0.005 min
 Response: 2617358031
 Conc: 554.72 ng/ml



#2 3,5-DICHLOROBENZOIC ACID

R.T.: 6.695 min
 Delta R.T.: -0.004 min
 Response: 723191235
 Conc: 534.93 ng/ml



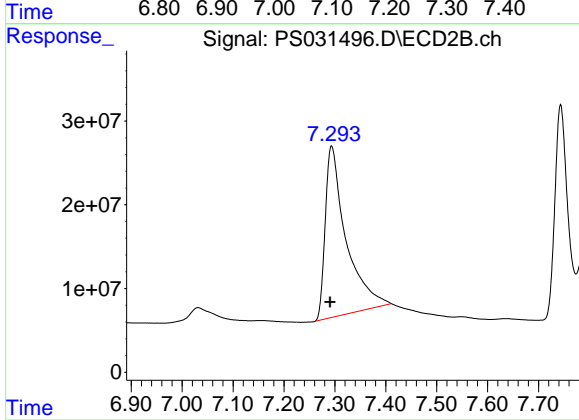
#3 4-Nitrophenol

R.T.: 7.098 min
 Delta R.T.: 0.000 min
 Response: 559427199
 Conc: 542.25 ng/ml

Instrument :
 ECD_S
 ClientSampleId :
 PB169287BS

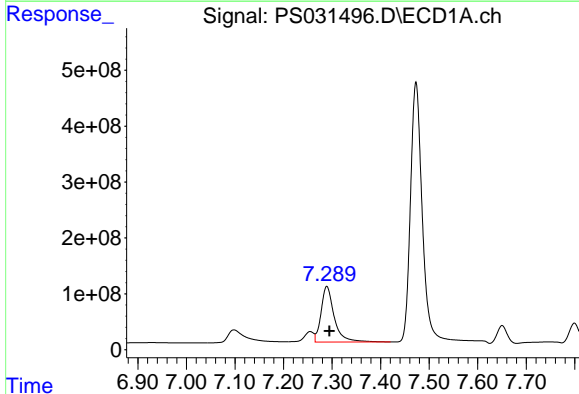
Manual Integrations
 APPROVED

Reviewed By :Abdul Mirza 08/20/2025
 Supervised By :mohammad ahmed 08/21/2025



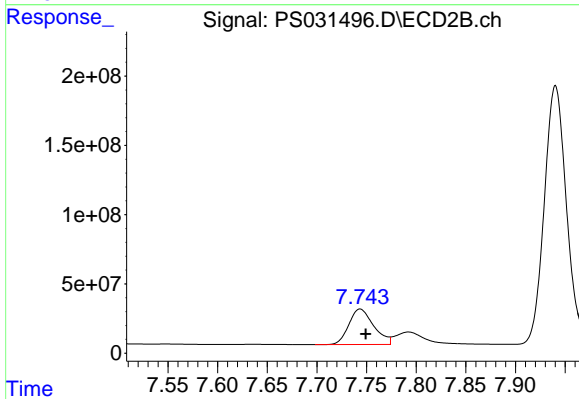
#3 4-Nitrophenol

R.T.: 7.294 min
 Delta R.T.: 0.003 min
 Response: 584399782
 Conc: 464.96 ng/ml



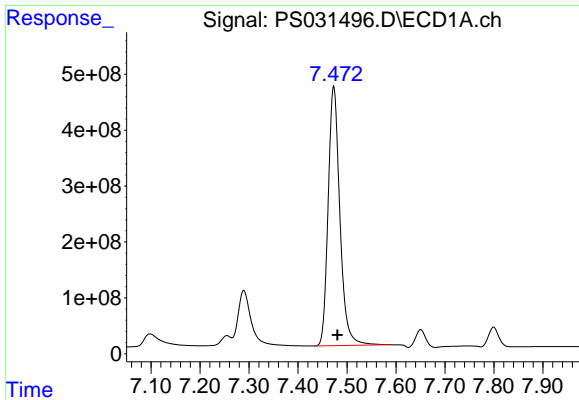
#4 2,4-DCAA

R.T.: 7.289 min
 Delta R.T.: -0.006 min
 Response: 1879391738
 Conc: 592.12 ng/ml



#4 2,4-DCAA

R.T.: 7.744 min
 Delta R.T.: -0.006 min
 Response: 448031841
 Conc: 530.00 ng/ml



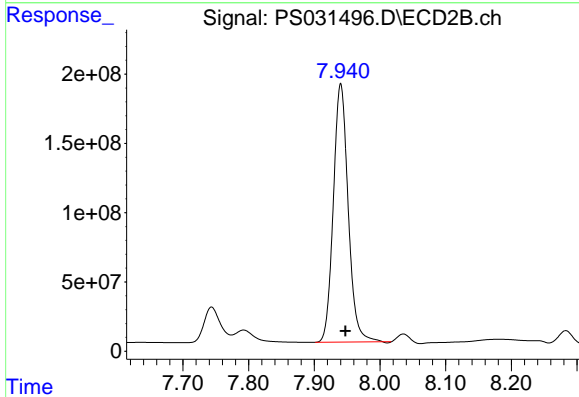
#5 DICAMBA

R.T.: 7.473 min
 Delta R.T.: -0.008 min
 Response: 7731796953
 Conc: 553.60 ng/ml

Instrument :
 ECD_S
 ClientSampleId :
 PB169287BS

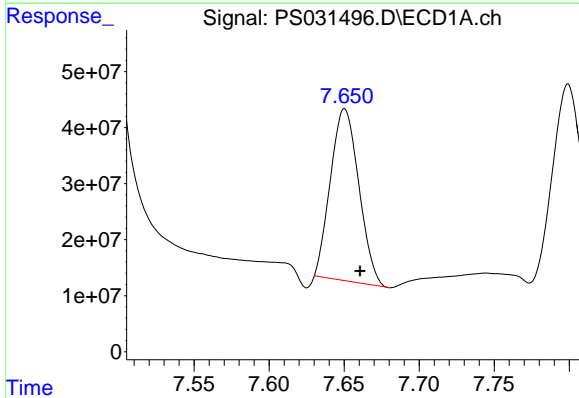
Manual Integrations
 APPROVED

Reviewed By :Abdul Mirza 08/20/2025
 Supervised By :mohammad ahmed 08/21/2025



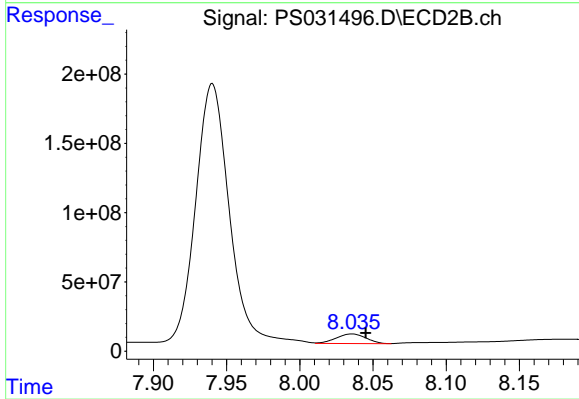
#5 DICAMBA

R.T.: 7.940 min
 Delta R.T.: -0.007 min
 Response: 2931416756
 Conc: 515.85 ng/ml



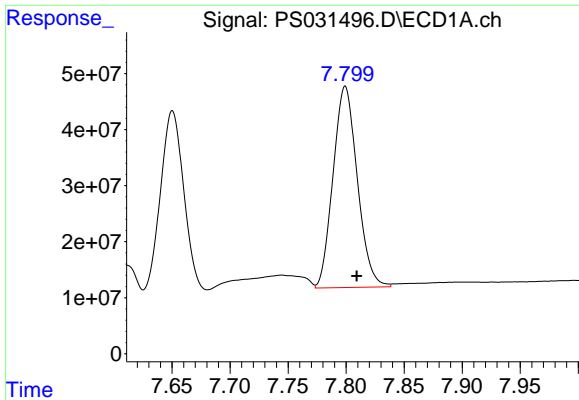
#6 MCPP

R.T.: 7.650 min
 Delta R.T.: -0.010 min
 Response: 403441462
 Conc: 50.15 ug/ml



#6 MCPP

R.T.: 8.035 min
 Delta R.T.: -0.010 min
 Response: 98063858
 Conc: 55.47 ug/ml m



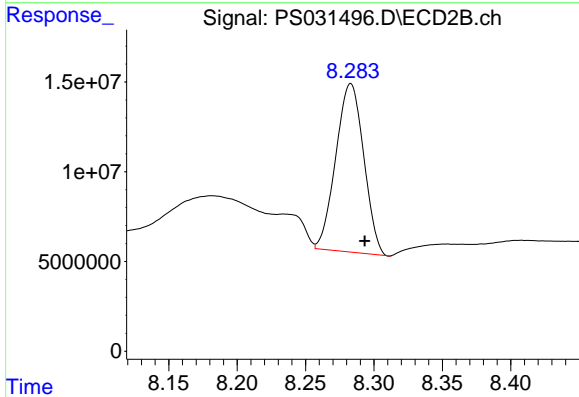
#7 MCPA

R.T.: 7.799 min
 Delta R.T.: -0.010 min
 Response: 522101170
 Conc: 52.41 ug/ml

Instrument :
 ECD_S
 ClientSampleId :
 PB169287BS

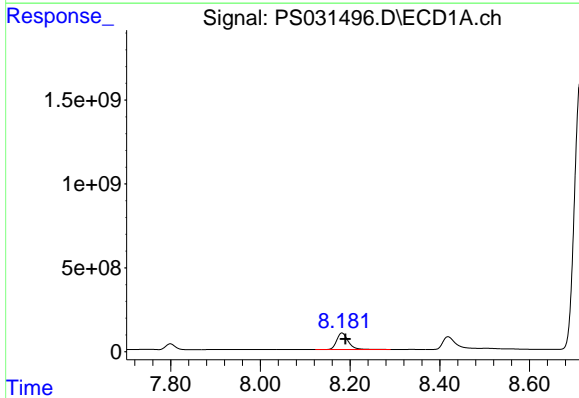
Manual Integrations
 APPROVED

Reviewed By :Abdul Mirza 08/20/2025
 Supervised By :mohammad ahmed 08/21/2025



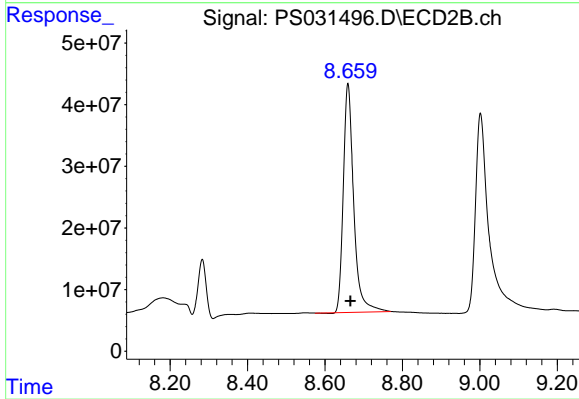
#7 MCPA

R.T.: 8.283 min
 Delta R.T.: -0.010 min
 Response: 133378314
 Conc: 47.54 ug/ml



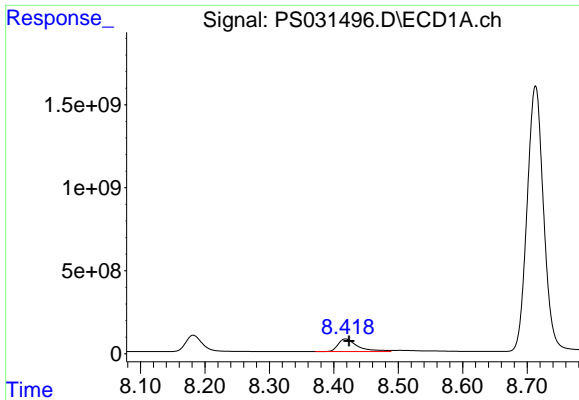
#8 DICHLORPROP

R.T.: 8.182 min
 Delta R.T.: -0.008 min
 Response: 1764150469
 Conc: 556.09 ng/ml



#8 DICHLORPROP

R.T.: 8.660 min
 Delta R.T.: -0.006 min
 Response: 690939306
 Conc: 517.54 ng/ml



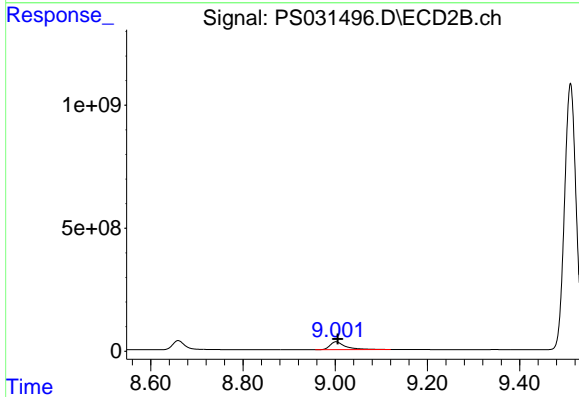
#9 2,4-D

R.T.: 8.418 min
 Delta R.T.: -0.005 min
 Response: 1607394007
 Conc: 558.74 ng/ml

Instrument :
 ECD_S
 ClientSampleId :
 PB169287BS

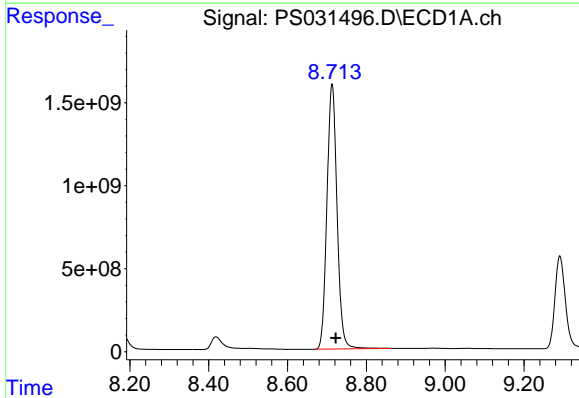
Manual Integrations
 APPROVED

Reviewed By :Abdul Mirza 08/20/2025
 Supervised By :mohammad ahmed 08/21/2025



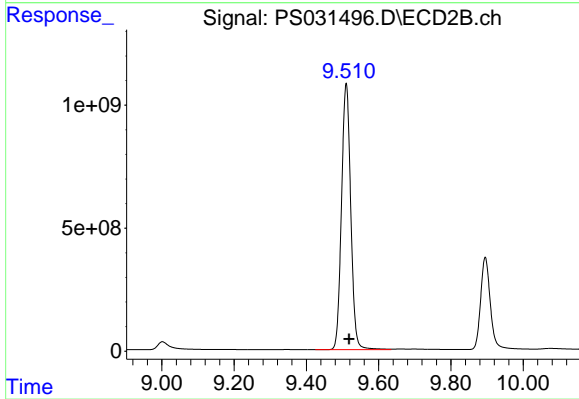
#9 2,4-D

R.T.: 9.001 min
 Delta R.T.: -0.005 min
 Response: 748022663
 Conc: 524.09 ng/ml m



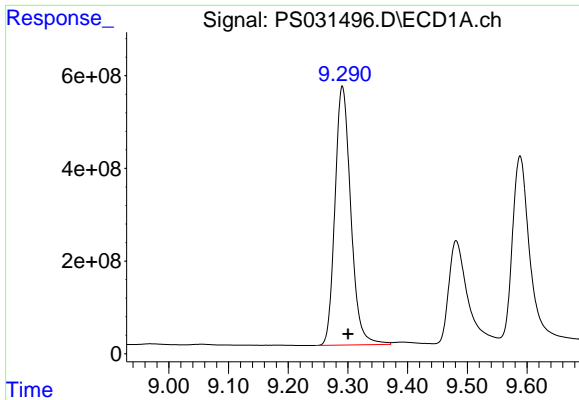
#10 Pentachlorophenol

R.T.: 8.713 min
 Delta R.T.: -0.009 min
 Response: 28460966855
 Conc: 592.78 ng/ml



#10 Pentachlorophenol

R.T.: 9.510 min
 Delta R.T.: -0.008 min
 Response: 19183911564
 Conc: 550.81 ng/ml

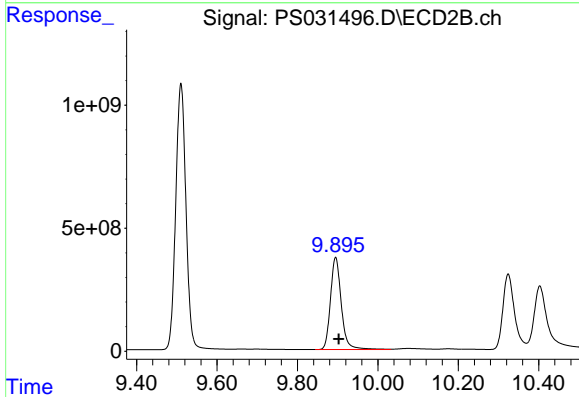


#11 2,4,5-TP (SILVEX)
 R.T.: 9.291 min
 Delta R.T.: -0.009 min
 Response: 10281370172
 Conc: 573.62 ng/ml

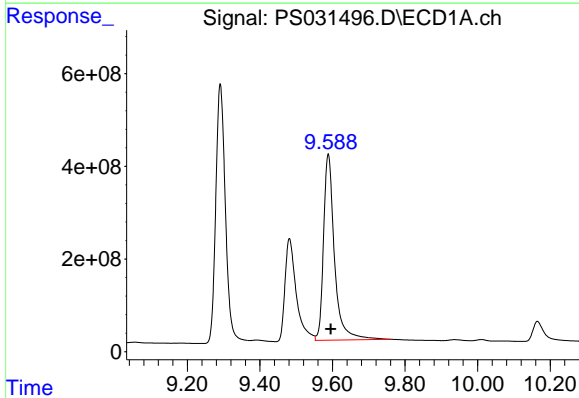
Instrument :
 ECD_S
 ClientSampleId :
 PB169287BS

Manual Integrations
 APPROVED

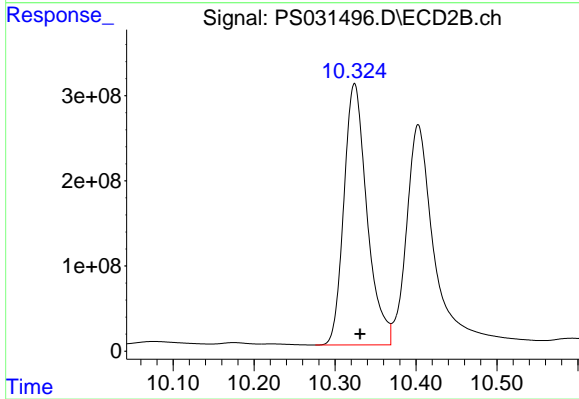
Reviewed By :Abdul Mirza 08/20/2025
 Supervised By :mohammad ahmed 08/21/2025



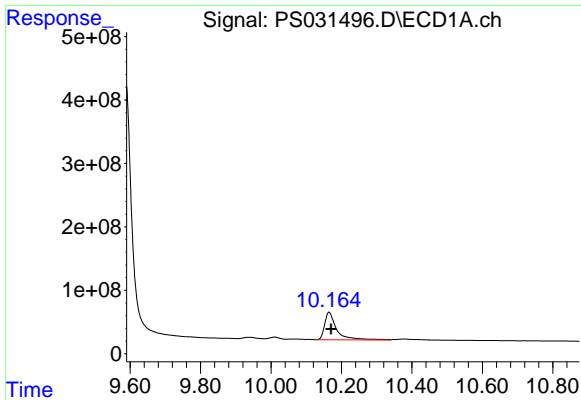
#11 2,4,5-TP (SILVEX)
 R.T.: 9.895 min
 Delta R.T.: -0.008 min
 Response: 7022066343
 Conc: 535.38 ng/ml



#12 2,4,5-T
 R.T.: 9.588 min
 Delta R.T.: -0.007 min
 Response: 8419120045
 Conc: 574.64 ng/ml



#12 2,4,5-T
 R.T.: 10.324 min
 Delta R.T.: -0.007 min
 Response: 6081470827
 Conc: 513.65 ng/ml



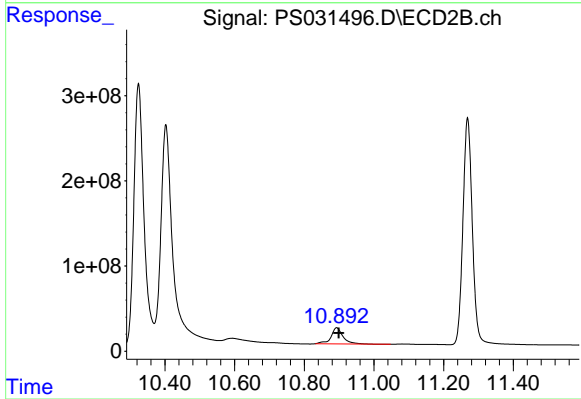
#13 2,4-DB

R.T.: 10.165 min
Delta R.T.: -0.005 min
Response: 1028411841
Conc: 535.15 ng/ml

Instrument :
ECD_S
Client Sample Id :
PB169287BS

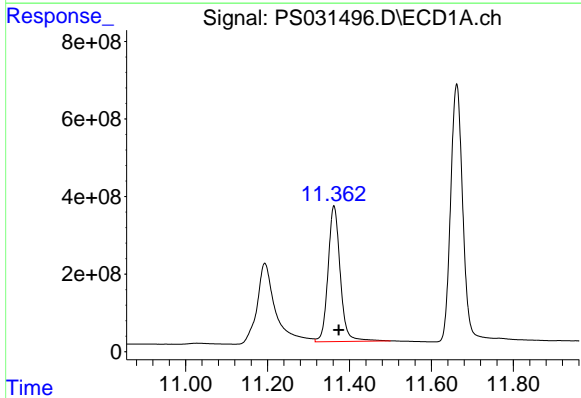
Manual Integrations
APPROVED

Reviewed By :Abdul Mirza 08/20/2025
Supervised By :mohammad ahmed 08/21/2025



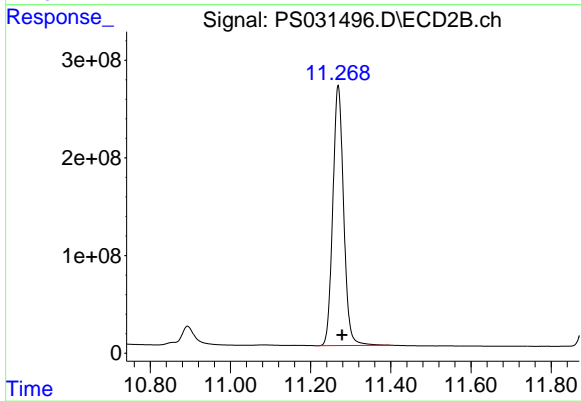
#13 2,4-DB

R.T.: 10.893 min
Delta R.T.: -0.006 min
Response: 451655498
Conc: 468.11 ng/ml



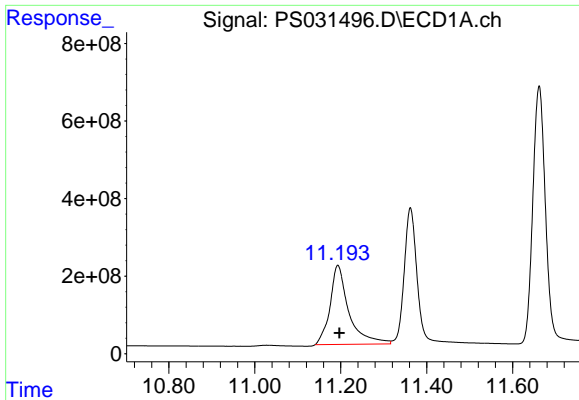
#14 DINOSEB

R.T.: 11.362 min
Delta R.T.: -0.011 min
Response: 7226562907
Conc: 569.99 ng/ml



#14 DINOSEB

R.T.: 11.269 min
Delta R.T.: -0.010 min
Response: 4987726840
Conc: 527.41 ng/ml



#15 Picloram

R.T.: 11.193 min
 Delta R.T.: -0.004 min
 Response: 6221320110
 Conc: 476.58 ng/ml

Instrument :

ECD_S

ClientSampleId :

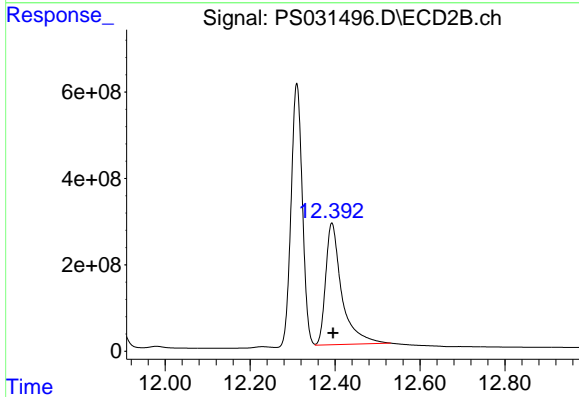
PB169287BS

Manual Integrations

APPROVED

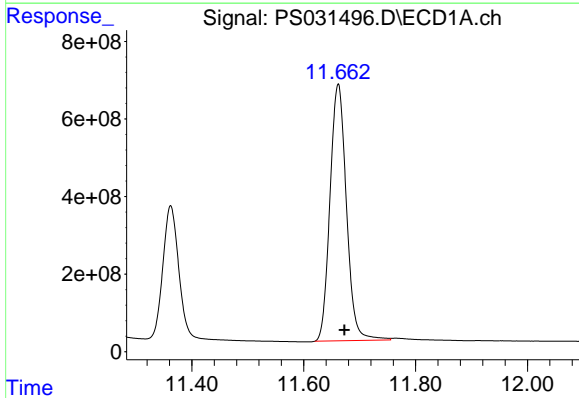
Reviewed By :Abdul Mirza 08/20/2025

Supervised By :mohammad ahmed 08/21/2025



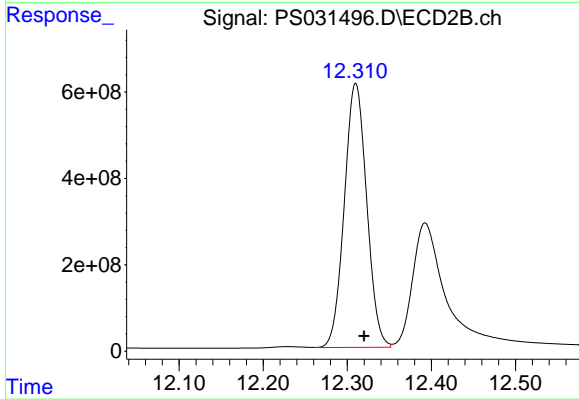
#15 Picloram

R.T.: 12.393 min
 Delta R.T.: -0.003 min
 Response: 7413828531
 Conc: 422.93 ng/ml



#16 DCPA

R.T.: 11.662 min
 Delta R.T.: -0.011 min
 Response: 13480435428
 Conc: 591.78 ng/ml



#16 DCPA

R.T.: 12.310 min
 Delta R.T.: -0.010 min
 Response: 11308913012
 Conc: 574.04 ng/ml m