

Data Path : Z:\svoasrv\HPCHEM1\BNA\_F\Data\BF082125\  
 Data File : BF143528.D  
 Acq On : 21 Aug 2025 14:13  
 Operator : RC/JU  
 Sample : Q2900-03DL2 100X  
 Misc :  
 ALS Vial : 12 Sample Multiplier: 1

Instrument :  
 BNA\_F  
 ClientSampleId :  
 DUP-01-081825DL2

Quant Time: Aug 21 14:31:08 2025  
 Quant Method : Z:\svoasrv\HPCHEM1\BNA\_F\Methods\8270-BF082025.M  
 Quant Title : ASP BNA STANDARDS FOR 5 POINT CALIBRATION  
 QLast Update : Thu Aug 21 06:12:21 2025  
 Response via : Initial Calibration

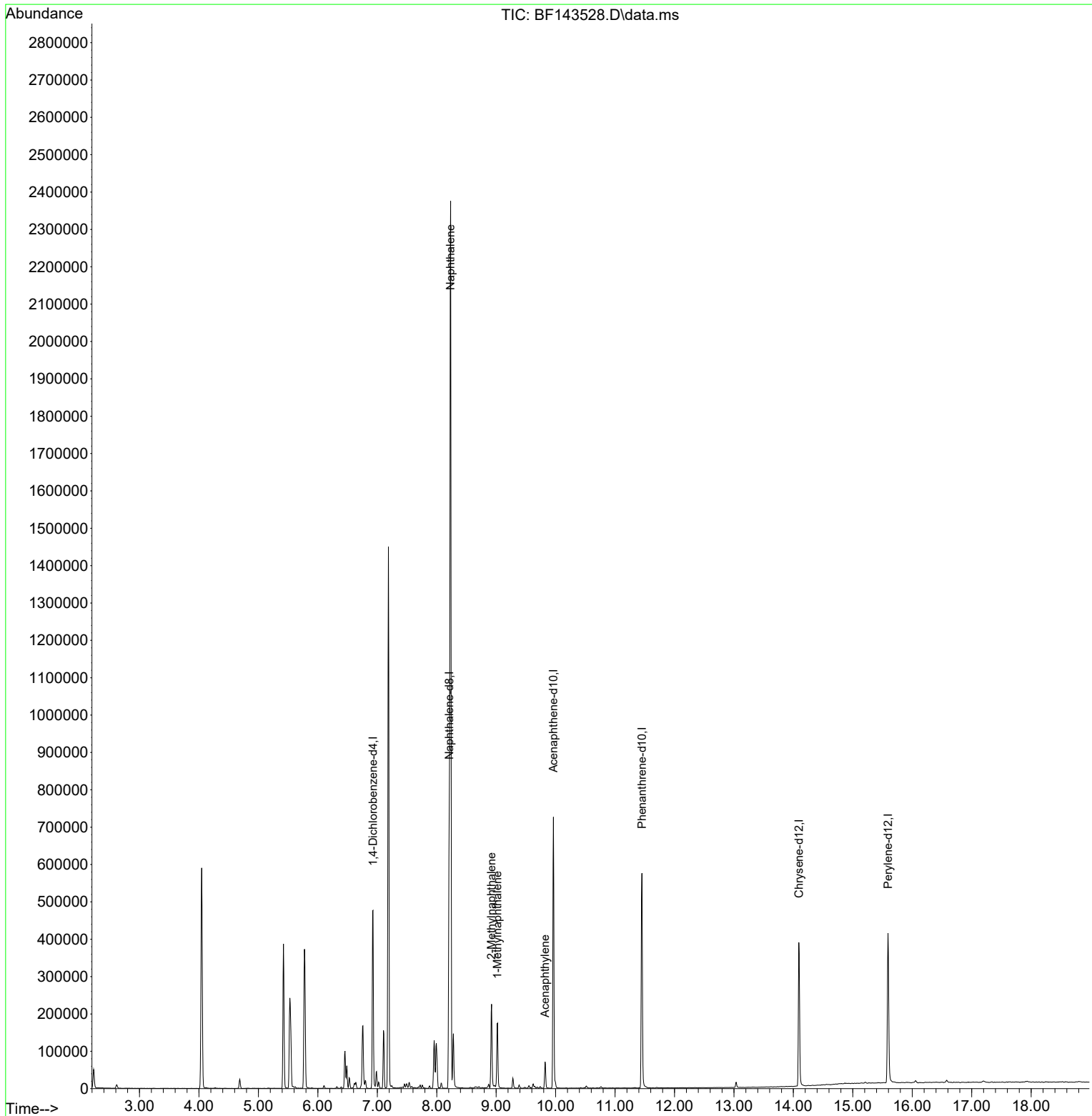
Compound	R.T.	QIon	Response	Conc	Units	Dev(Min)	
Internal Standards							
1) 1,4-Dichlorobenzene-d4	6.928	152	106391	20.000	ng	0.00	
21) Naphthalene-d8	8.210	136	406559	20.000	ng	0.00	
39) Acenaphthene-d10	9.963	164	215536	20.000	ng	0.00	
64) Phenanthrene-d10	11.451	188	311169	20.000	ng	0.00	
76) Chrysene-d12	14.092	240	210624	20.000	ng	-0.01	
86) Perylene-d12	15.592	264	252482	20.000	ng	0.00	
System Monitoring Compounds							
5) 2-Fluorophenol	5.581	112	2305	0.378	ng	0.02	
7) Phenol-d6	6.592	99	2356	0.313	ng	0.02	
23) Nitrobenzene-d5	7.492	82	5776	0.829	ng	0.00	
42) 2,4,6-Tribromophenol	10.763	330	1216	0.606	ng	0.00	
45) 2-Fluorobiphenyl	9.280	172	15056	1.154	ng	0.00	
79) Terphenyl-d14	13.039	244	10745	0.890	ng	0.00	
Target Compounds							
31) Naphthalene	8.233	128	1507874	77.252	ng		Qvalue 99
37) 2-Methylnaphthalene	8.922	142	92290	7.079	ng		100
38) 1-Methylnaphthalene	9.022	142	69385	5.564	ng		100
49) Acenaphthylene	9.822	152	42993	2.501	ng		99

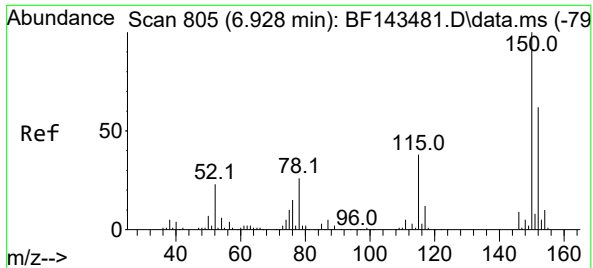
(#) = qualifier out of range (m) = manual integration (+) = signals summed

Data Path : Z:\svoasrv\HPCHEM1\BNA\_F\Data\BF082125\  
 Data File : BF143528.D  
 Acq On : 21 Aug 2025 14:13  
 Operator : RC/JU  
 Sample : Q2900-03DL2 100X  
 Misc :  
 ALS Vial : 12 Sample Multiplier: 1

Instrument :  
 BNA\_F  
 ClientSampleId :  
 DUP-01-081825DL2

Quant Time: Aug 21 14:31:08 2025  
 Quant Method : Z:\svoasrv\HPCHEM1\BNA\_F\Methods\8270-BF082025.M  
 Quant Title : ASP BNA STANDARDS FOR 5 POINT CALIBRATION  
 QLast Update : Thu Aug 21 06:12:21 2025  
 Response via : Initial Calibration

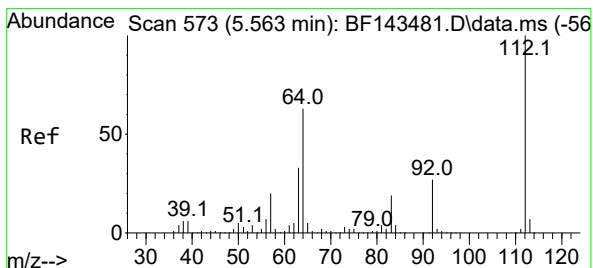
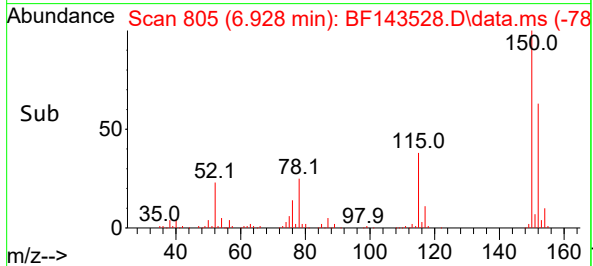
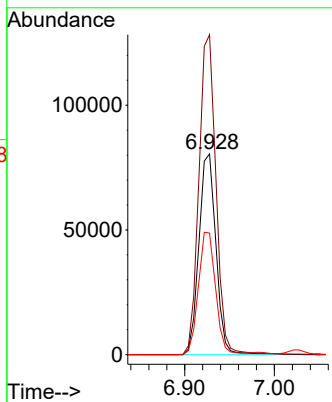
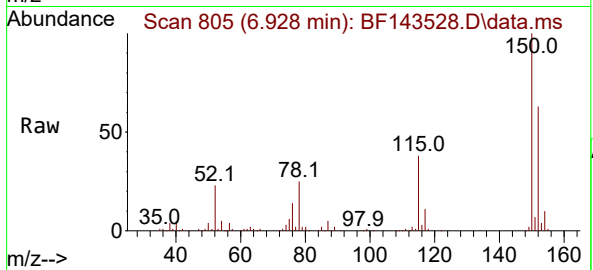




#1  
 1,4-Dichlorobenzene-d4  
 Concen: 20.000 ng  
 RT: 6.928 min Scan# 805  
 Delta R.T. -0.000 min  
 Lab File: BF143528.D  
 Acq: 21 Aug 2025 14:13

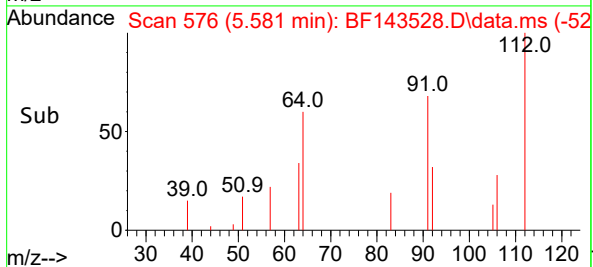
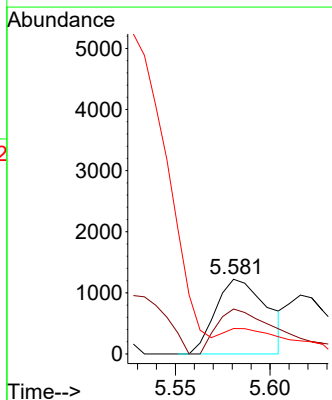
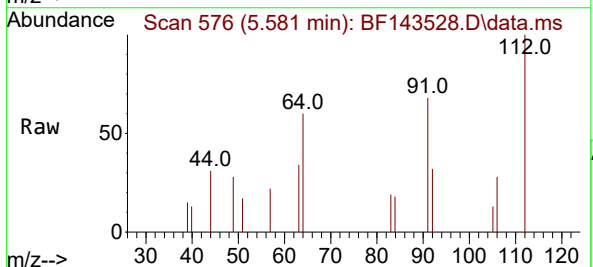
Instrument :  
 BNA\_F  
 ClientSampleId :  
 DUP-01-081825DL2

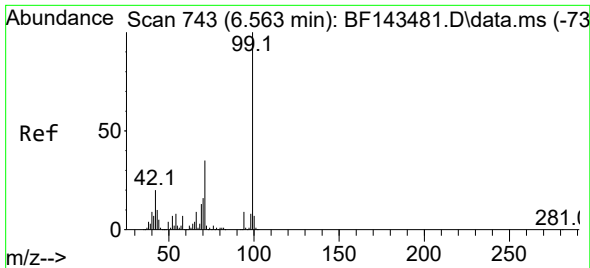
Tgt Ion:152 Resp: 106391  
 Ion Ratio Lower Upper  
 152 100  
 150 159.3 128.9 193.3  
 115 60.5 49.2 73.8



#5  
 2-Fluorophenol  
 Concen: 0.378 ng  
 RT: 5.581 min Scan# 576  
 Delta R.T. 0.018 min  
 Lab File: BF143528.D  
 Acq: 21 Aug 2025 14:13

Tgt Ion:112 Resp: 2305  
 Ion Ratio Lower Upper  
 112 100  
 64 60.1 50.4 75.6  
 63 34.1 26.4 39.6



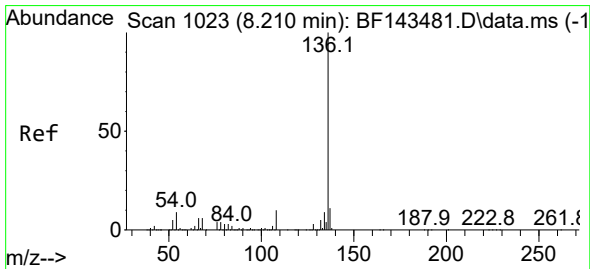
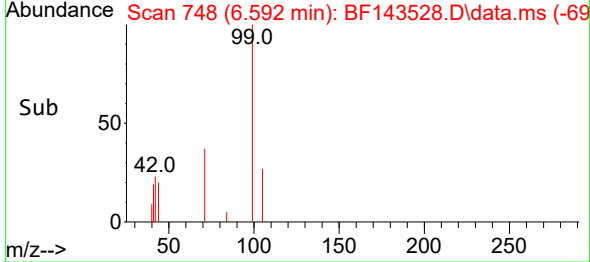
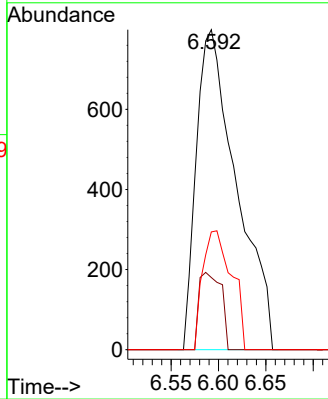
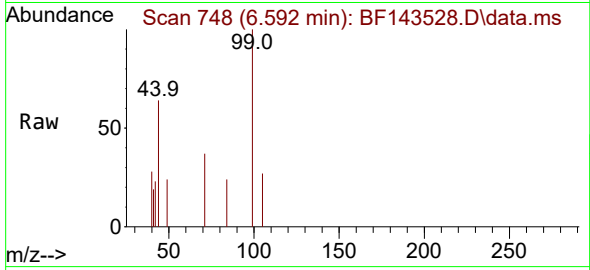


#7  
 Phenol-d6  
 Concen: 0.313 ng  
 RT: 6.592 min Scan# 743  
 Delta R.T. 0.018 min  
 Lab File: BF143528.D  
 Acq: 21 Aug 2025 14:13

Instrument :  
 BNA\_F  
 ClientSampleId :  
 DUP-01-081825DL2

Tgt Ion: 99 Resp: 2356

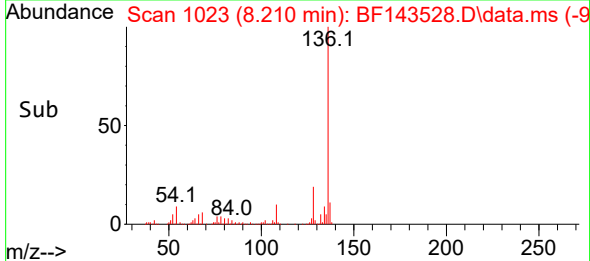
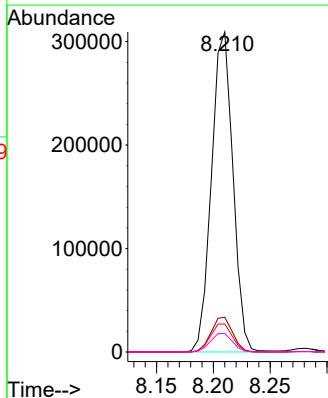
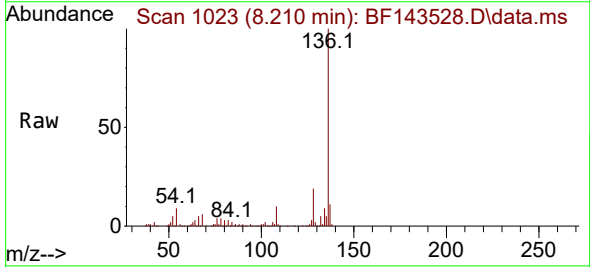
Ion	Ratio	Lower	Upper
99	100		
42	22.5	16.3	24.5
71	36.8	28.2	42.2

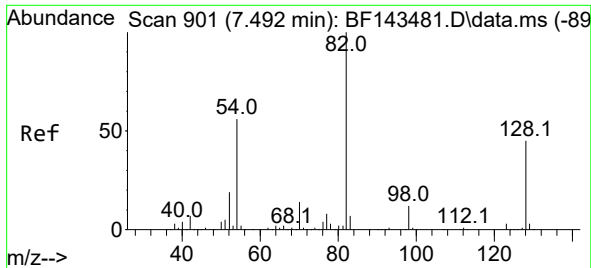


#21  
 Naphthalene-d8  
 Concen: 20.000 ng  
 RT: 8.210 min Scan# 1023  
 Delta R.T. -0.000 min  
 Lab File: BF143528.D  
 Acq: 21 Aug 2025 14:13

Tgt Ion: 136 Resp: 406559

Ion	Ratio	Lower	Upper
136	100		
137	10.8	9.0	13.4
54	8.7	7.4	11.2
68	5.8	5.0	7.4



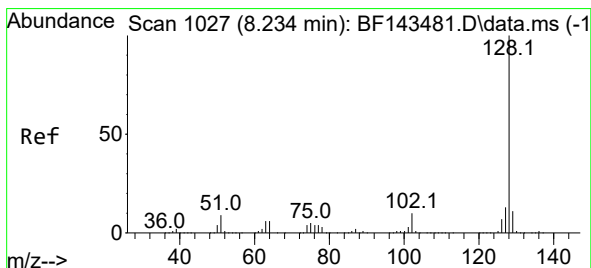
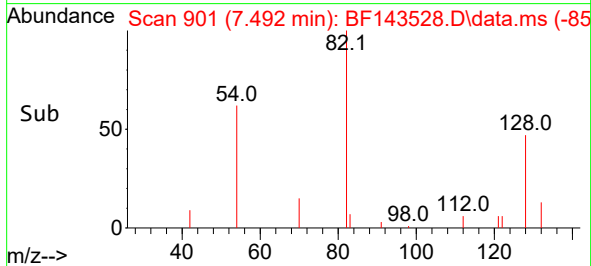
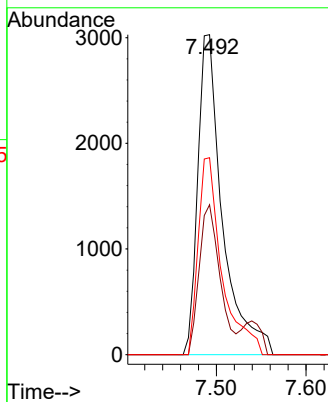
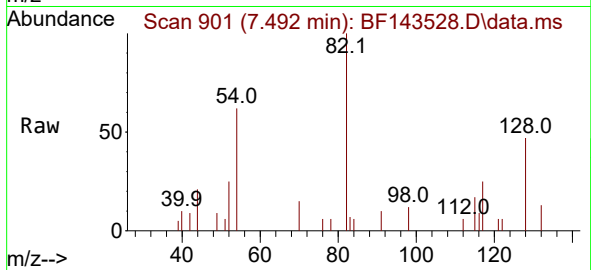


#23  
 Nitrobenzene-d5  
 Concen: 0.829 ng  
 RT: 7.492 min Scan# 901  
 Delta R.T. -0.006 min  
 Lab File: BF143528.D  
 Acq: 21 Aug 2025 14:13

Instrument :  
 BNA\_F  
 ClientSampleId :  
 DUP-01-081825DL2

Tgt Ion: 82 Resp: 5776

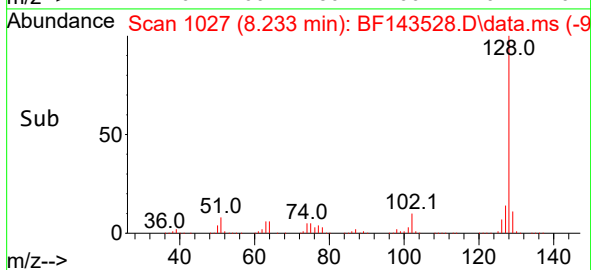
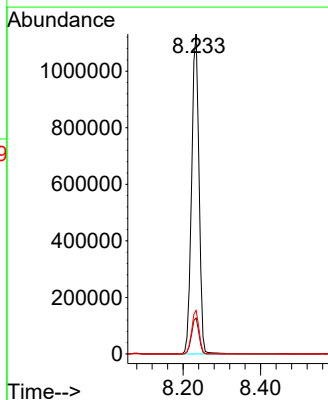
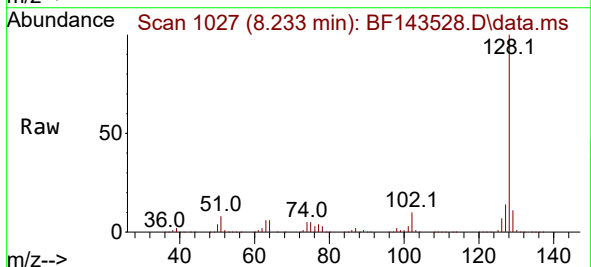
Ion	Ratio	Lower	Upper
82	100		
128	46.9	35.5	53.3
54	61.6	44.3	66.5

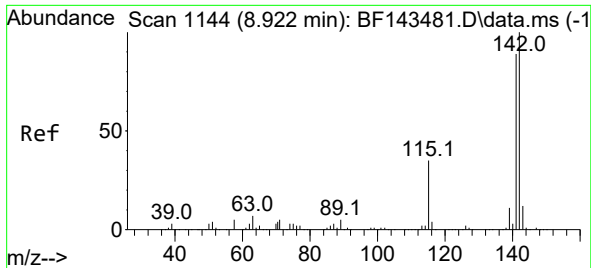


#31  
 Naphthalene  
 Concen: 77.252 ng  
 RT: 8.233 min Scan# 1027  
 Delta R.T. -0.000 min  
 Lab File: BF143528.D  
 Acq: 21 Aug 2025 14:13

Tgt Ion: 128 Resp: 1507874

Ion	Ratio	Lower	Upper
128	100		
129	11.3	8.8	13.2
127	13.6	10.6	16.0

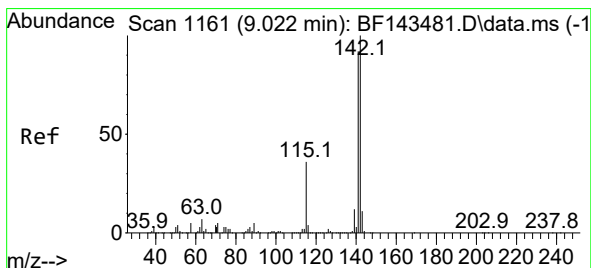
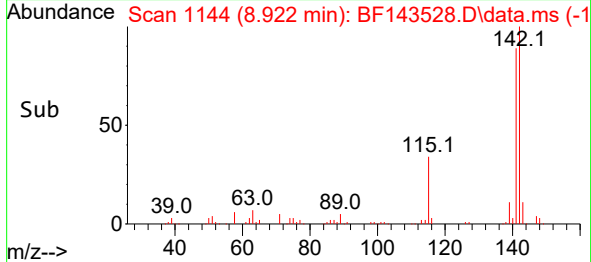
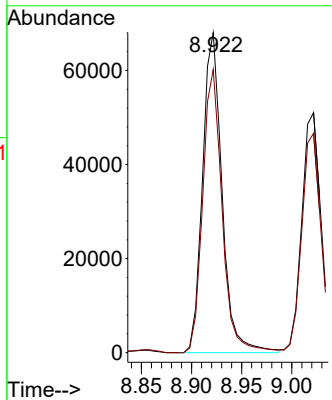
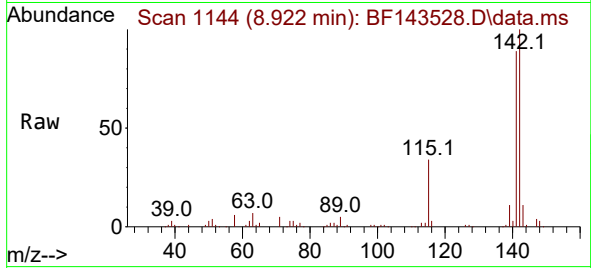




#37  
 2-Methylnaphthalene  
 Concen: 7.079 ng  
 RT: 8.922 min Scan# 1144  
 Delta R.T. -0.006 min  
 Lab File: BF143528.D  
 Acq: 21 Aug 2025 14:13

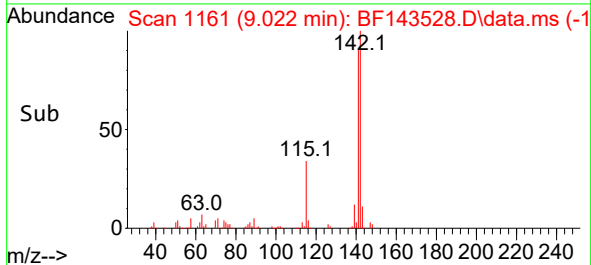
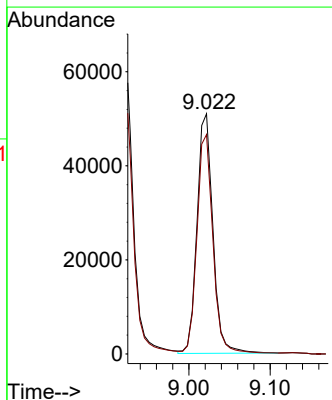
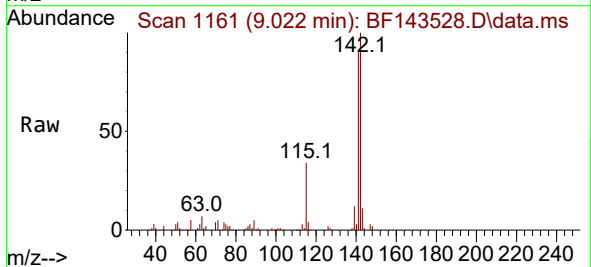
Instrument : BNA\_F  
 ClientSampleId : DUP-01-081825DL2

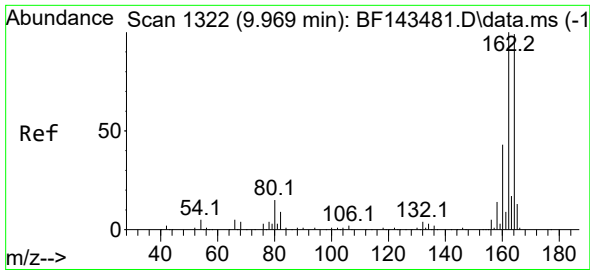
Tgt Ion:142 Resp: 92290  
 Ion Ratio Lower Upper  
 142 100  
 141 88.5 71.0 106.4



#38  
 1-Methylnaphthalene  
 Concen: 5.564 ng  
 RT: 9.022 min Scan# 1161  
 Delta R.T. -0.006 min  
 Lab File: BF143528.D  
 Acq: 21 Aug 2025 14:13

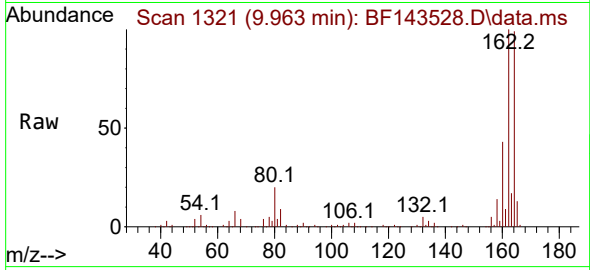
Tgt Ion:142 Resp: 69385  
 Ion Ratio Lower Upper  
 142 100  
 141 91.3 73.3 109.9



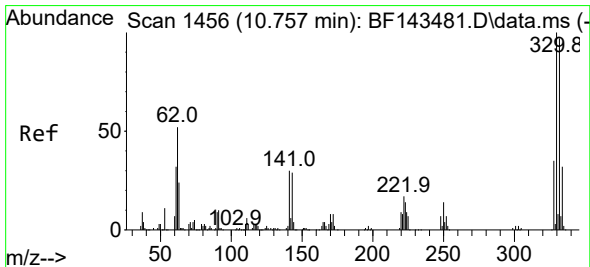
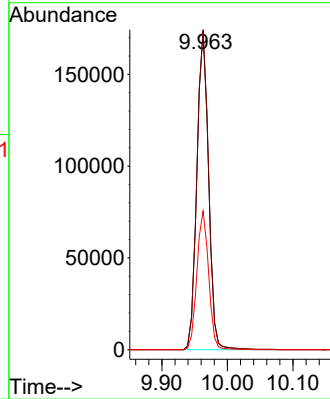
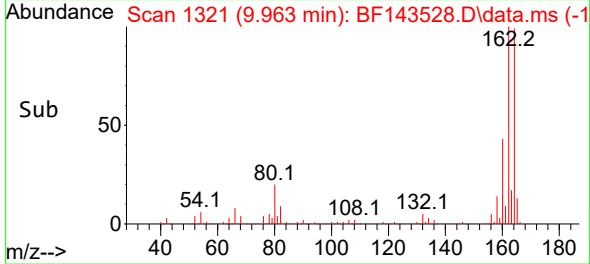


#39  
 Acenaphthene-d10  
 Concen: 20.000 ng  
 RT: 9.963 min Scan# 11  
 Delta R.T. -0.006 min  
 Lab File: BF143528.D  
 Acq: 21 Aug 2025 14:13

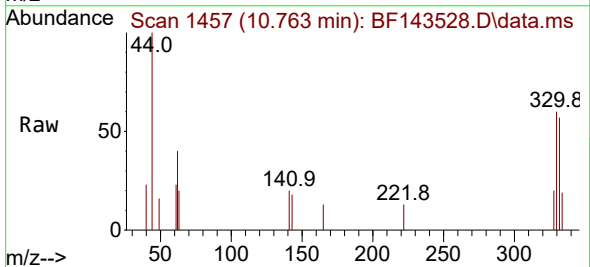
Instrument :  
 BNA\_F  
 ClientSampleId :  
 DUP-01-081825DL2



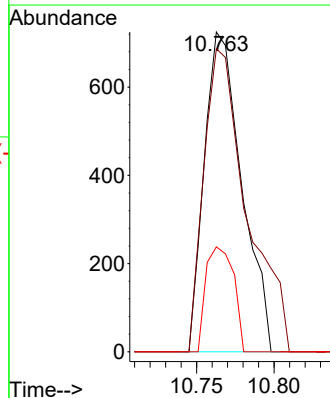
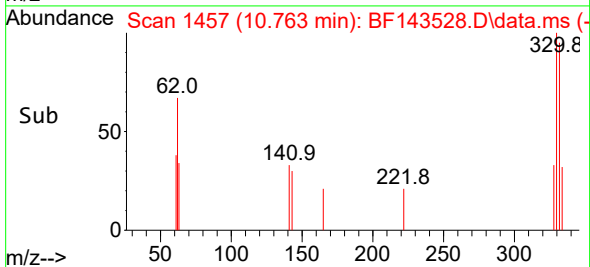
Tgt Ion:164 Resp: 215536  
 Ion Ratio Lower Upper  
 164 100  
 162 100.8 80.5 120.7  
 160 43.7 34.3 51.5

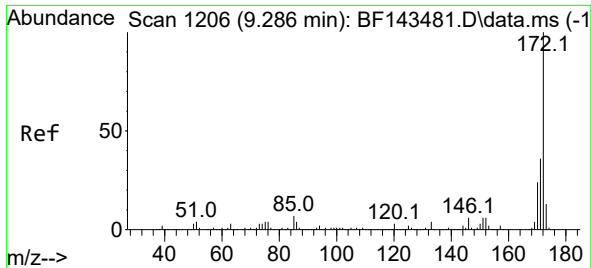


#42  
 2,4,6-Tribromophenol  
 Concen: 0.606 ng  
 RT: 10.763 min Scan# 1457  
 Delta R.T. -0.000 min  
 Lab File: BF143528.D  
 Acq: 21 Aug 2025 14:13



Tgt Ion:330 Resp: 1216  
 Ion Ratio Lower Upper  
 330 100  
 332 109.0 78.0 117.0  
 141 24.3 23.7 35.5

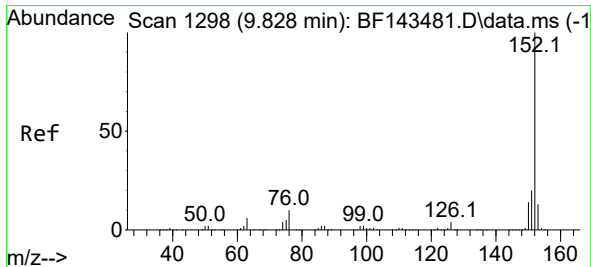
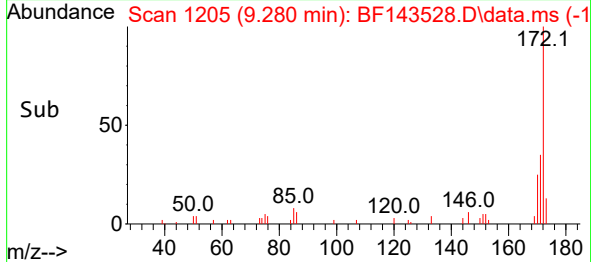
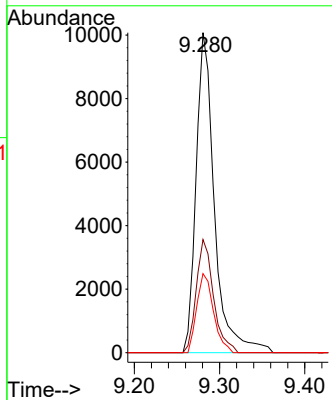
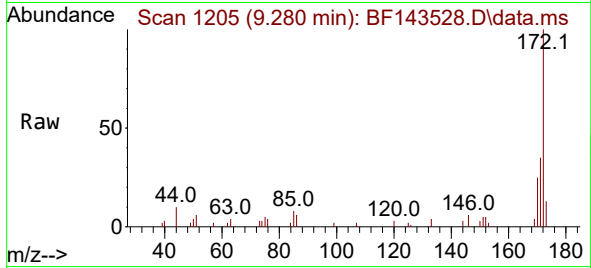




#45  
 2-Fluorobiphenyl  
 Concen: 1.154 ng  
 RT: 9.280 min Scan# 11  
 Delta R.T. -0.006 min  
 Lab File: BF143528.D  
 Acq: 21 Aug 2025 14:13

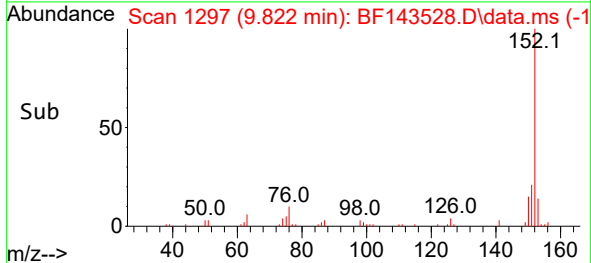
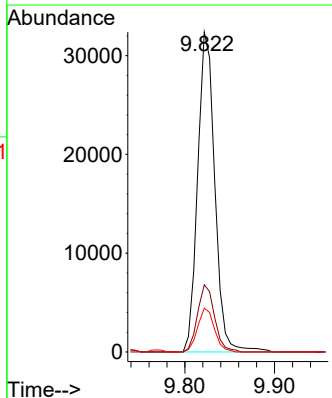
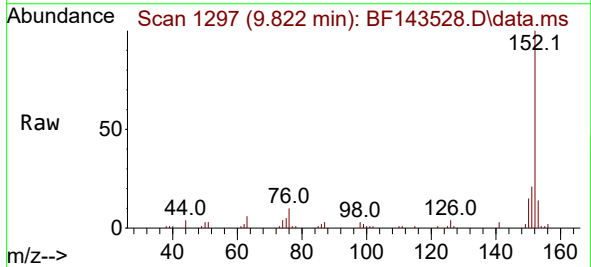
Instrument :  
 BNA\_F  
 ClientSampleId :  
 DUP-01-081825DL2

Tgt Ion:172 Resp: 15056  
 Ion Ratio Lower Upper  
 172 100  
 171 35.3 28.8 43.2  
 170 24.7 18.8 28.2

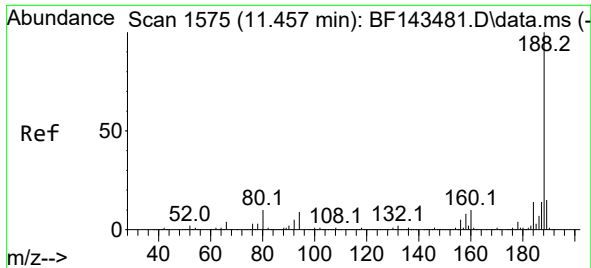


#49  
 Acenaphthylene  
 Concen: 2.501 ng  
 RT: 9.822 min Scan# 1297  
 Delta R.T. -0.006 min  
 Lab File: BF143528.D  
 Acq: 21 Aug 2025 14:13

Tgt Ion:152 Resp: 42993  
 Ion Ratio Lower Upper  
 152 100  
 151 21.0 16.2 24.4  
 153 13.7 10.6 15.8



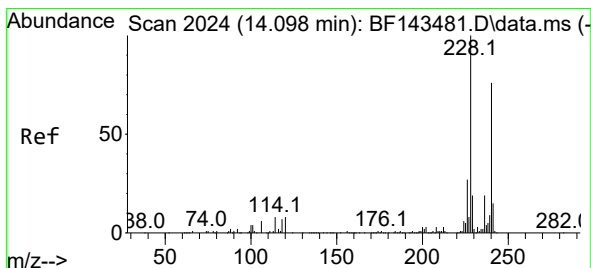
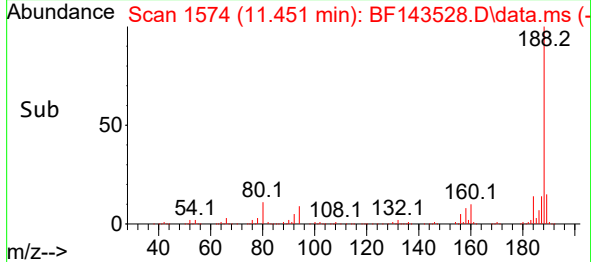
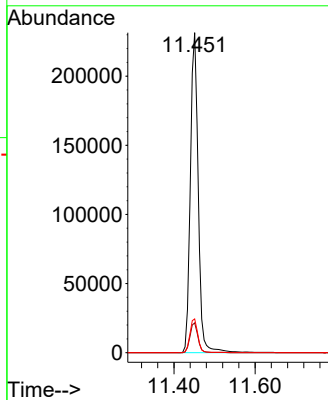
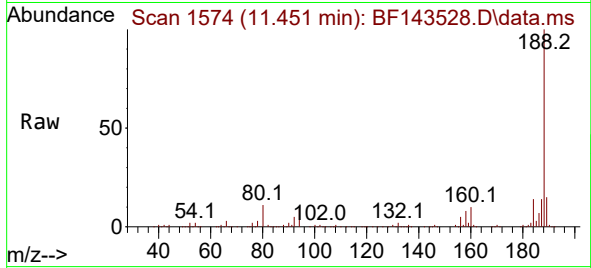




#64  
 Phenanthrene-d10  
 Concen: 20.000 ng  
 RT: 11.451 min Scan# 11  
 Delta R.T. -0.006 min  
 Lab File: BF143528.D  
 Acq: 21 Aug 2025 14:13

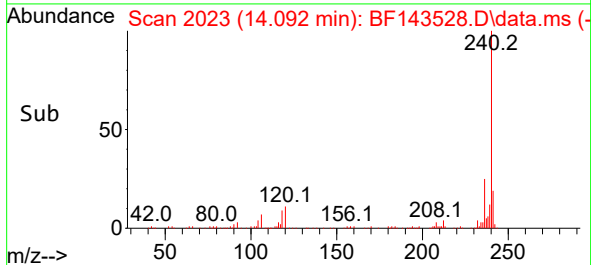
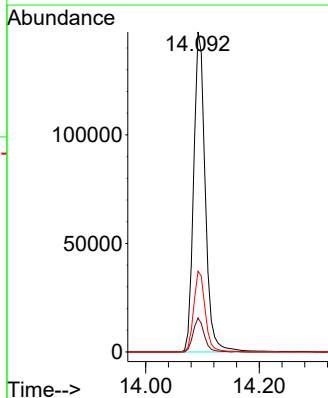
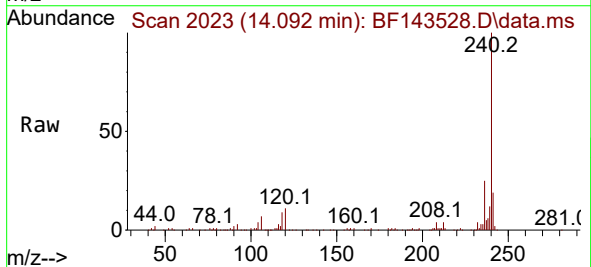
Instrument :  
 BNA\_F  
 ClientSampleId :  
 DUP-01-081825DL2

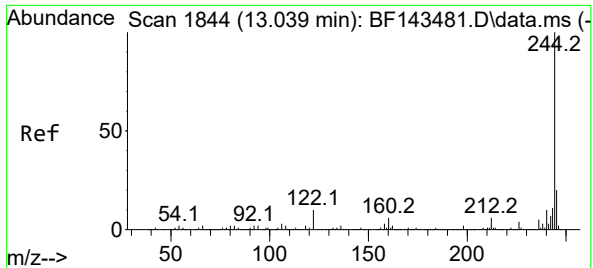
Tgt Ion:188 Resp: 311169  
 Ion Ratio Lower Upper  
 188 100  
 94 9.3 7.4 11.2  
 80 10.6 8.2 12.4



#76  
 Chrysene-d12  
 Concen: 20.000 ng  
 RT: 14.092 min Scan# 2023  
 Delta R.T. -0.012 min  
 Lab File: BF143528.D  
 Acq: 21 Aug 2025 14:13

Tgt Ion:240 Resp: 210624  
 Ion Ratio Lower Upper  
 240 100  
 120 10.6 8.6 12.8  
 236 25.3 20.4 30.6



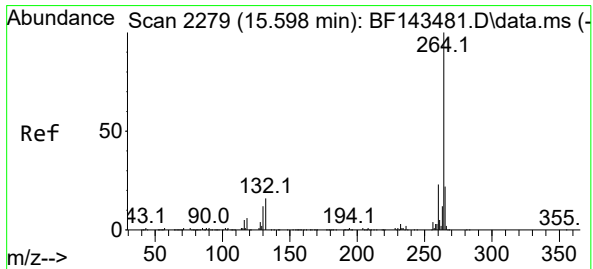
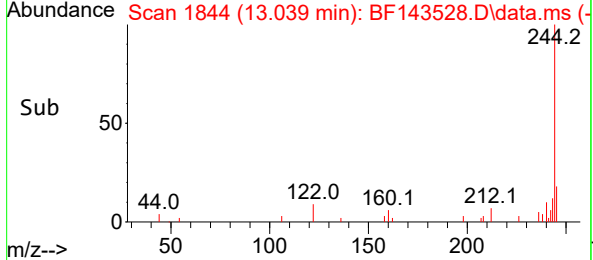
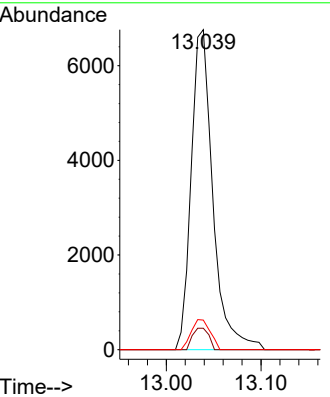
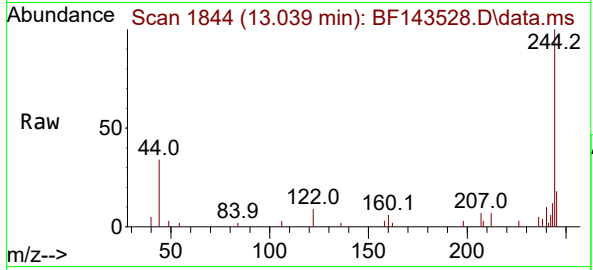


#79  
 Terphenyl-d14  
 Concen: 0.890 ng  
 RT: 13.039 min Scan# 1844  
 Delta R.T. -0.000 min  
 Lab File: BF143528.D  
 Acq: 21 Aug 2025 14:13

Instrument : BNA\_F  
 ClientSampleId : DUP-01-081825DL2

Tgt Ion:244 Resp: 10745

Ion	Ratio	Lower	Upper
244	100		
212	6.7	5.2	7.8
122	9.2	7.9	11.9



#86  
 Perylene-d12  
 Concen: 20.000 ng  
 RT: 15.592 min Scan# 2278  
 Delta R.T. -0.006 min  
 Lab File: BF143528.D  
 Acq: 21 Aug 2025 14:13

Tgt Ion:264 Resp: 252482

Ion	Ratio	Lower	Upper
264	100		
260	23.2	18.7	28.1
265	21.7	17.6	26.4

