

Data Path : Z:\svoasrv\HPCHEM1\BNA\_F\Data\BF082025\  
 Data File : BF143511.D  
 Acq On : 21 Aug 2025 04:21  
 Operator : RC/JU  
 Sample : Q2900-02  
 Misc :  
 ALS Vial : 35 Sample Multiplier: 1

Instrument :  
 BNA\_F  
 ClientSampleId :  
 MN-12C-081825

Integration Parameters: rteint.p  
 Integrator: RTE  
 Smoothing : ON  
 Sampling : 1  
 Start Thrs: 0.2  
 Stop Thrs : 0  
 Filtering: 5  
 Min Area: 3 % of largest Peak  
 Max Peaks: 100  
 Peak Location: TOP

If leading or trailing edge < 100 prefer < Baseline drop else tangent >  
 Peak separation: 5

Method : Z:\svoasrv\HPCHEM1\BNA\_F\Methods\8270-BF082025.M  
 Title : ASP BNA STANDARDS FOR 5 POINT CALIBRATION

Signal : TIC: BF143511.D\data.ms

peak #	R.T. min	first scan	max scan	last scan	PK TY	peak height	corr. area	corr. % max.	% of total
1	2.263	4	12	19	rBV	2484792	4088356	5.87%	1.107%
2	2.646	59	77	89	rBV	712056	1350825	1.94%	0.366%
3	4.128	310	329	335	rBV	8451998	37080230	53.25%	10.041%
4	4.699	417	426	441	rVB	1756837	2625678	3.77%	0.711%
5	5.463	545	556	562	rBV	8412869	22382012	32.14%	6.061%
6	5.575	565	575	581	rVV	8019542	22017213	31.62%	5.962%
7	5.822	606	617	624	rVV3	8513959	25730772	36.95%	6.968%
8	6.110	659	666	671	rBV	823380	1024964	1.47%	0.278%
9	6.469	720	727	730	rBV	5337145	8519179	12.23%	2.307%
10	6.498	730	732	736	rVV	3976722	4502864	6.47%	1.219%
11	6.540	736	739	742	rVV	2168865	2749020	3.95%	0.744%
12	6.569	742	744	749	rVV	743350	873615	1.25%	0.237%
13	6.622	749	753	755	rVV	1115052	1517448	2.18%	0.411%
14	6.646	755	757	766	rVB	1326754	1622958	2.33%	0.439%
15	6.775	766	779	783	rBV2	6795697	14196013	20.39%	3.844%
16	6.810	783	785	791	rVB	1655685	1819818	2.61%	0.493%
17	6.998	810	817	821	rVV	2561377	4586743	6.59%	1.242%
18	7.045	821	825	831	rVB	859301	1761541	2.53%	0.477%
19	7.134	831	840	845	rBV	6139074	13529792	19.43%	3.664%
20	7.251	845	860	866	rVV	9259378	41555641	59.67%	11.253%
21	7.469	893	897	899	rVV	1004101	1380227	1.98%	0.374%
22	7.498	899	902	906	rVV	1457185	2034910	2.92%	0.551%
23	7.545	906	910	914	rVV	1192648	1614580	2.32%	0.437%
24	7.728	938	941	944	rVV	664540	755844	1.09%	0.205%
25	7.887	962	968	974	rVB	646036	921222	1.32%	0.249%
26	7.975	974	983	987	rBV3	5501796	13187585	18.94%	3.571%
27	8.016	987	990	997	rVV	5735096	10888034	15.64%	2.948%
28	8.092	998	1003	1012	rVB	900801	1614739	2.32%	0.437%
29	8.328	1017	1043	1052	rBV2	10415785	69637203	100.00%	18.857%
30	8.716	1106	1109	1114	rVB	503318	730444	1.05%	0.198%
31	8.881	1131	1137	1141	rVV	1038674	1752026	2.52%	0.474%
32	8.945	1141	1148	1152	rVV	7059734	13538065	19.44%	3.666%
33	8.987	1152	1155	1157	rVV	606200	733519	1.05%	0.199%
34	9.045	1157	1165	1170	rVB	6553957	12142514	17.44%	3.288%
35	9.287	1201	1206	1211	rVB	2752994	3561386	5.11%	0.964%
36	9.386	1217	1223	1229	rBV	1052360	1416989	2.03%	0.384%

Data Path : Z:\svoasrv\HPCHEM1\BNA\_F\Data\BF082025\  
 Data File : BF143511.D  
 Acq On : 21 Aug 2025 04:21  
 Operator : RC/JU  
 Sample : Q2900-02  
 Misc :  
 ALS Vial : 35 Sample Multiplier: 1

Instrument :  
 BNA\_F  
 ClientSampleId :  
 MN-12C-081825

Integration Parameters: rteint.p  
 Integrator: RTE  
 Smoothing : ON Filtering: 5  
 Sampling : 1 Min Area: 3 % of largest Peak  
 Start Thrs: 0.2 Max Peaks: 100  
 Stop Thrs : 0 Peak Location: TOP

If leading or trailing edge < 100 prefer < Baseline drop else tangent >  
 Peak separation: 5

Method : Z:\svoasrv\HPCHEM1\BNA\_F\Methods\8270-BF082025.M  
 Title : ASP BNA STANDARDS FOR 5 POINT CALIBRATION

37	9.551	1245	1251	1255	rVV	822999	1308003	1.88%	0.354%
38	9.622	1259	1263	1266	rVV	1094292	1553767	2.23%	0.421%
39	9.745	1279	1284	1292	rVB2	452961	792281	1.14%	0.215%
40	9.834	1292	1299	1304	rBV	4340469	6059021	8.70%	1.641%
41	9.963	1311	1321	1324	rBV2	813123	1294263	1.86%	0.350%
42	9.998	1324	1327	1331	rVB	1315242	1580509	2.27%	0.428%
43	10.510	1411	1414	1420	rVB	696984	961726	1.38%	0.260%
44	10.751	1448	1455	1464	rBV2	1600142	2426922	3.49%	0.657%
45	11.451	1570	1574	1577	rBV	684135	963603	1.38%	0.261%
46	13.033	1837	1843	1852	rVB	2255035	2899483	4.16%	0.785%

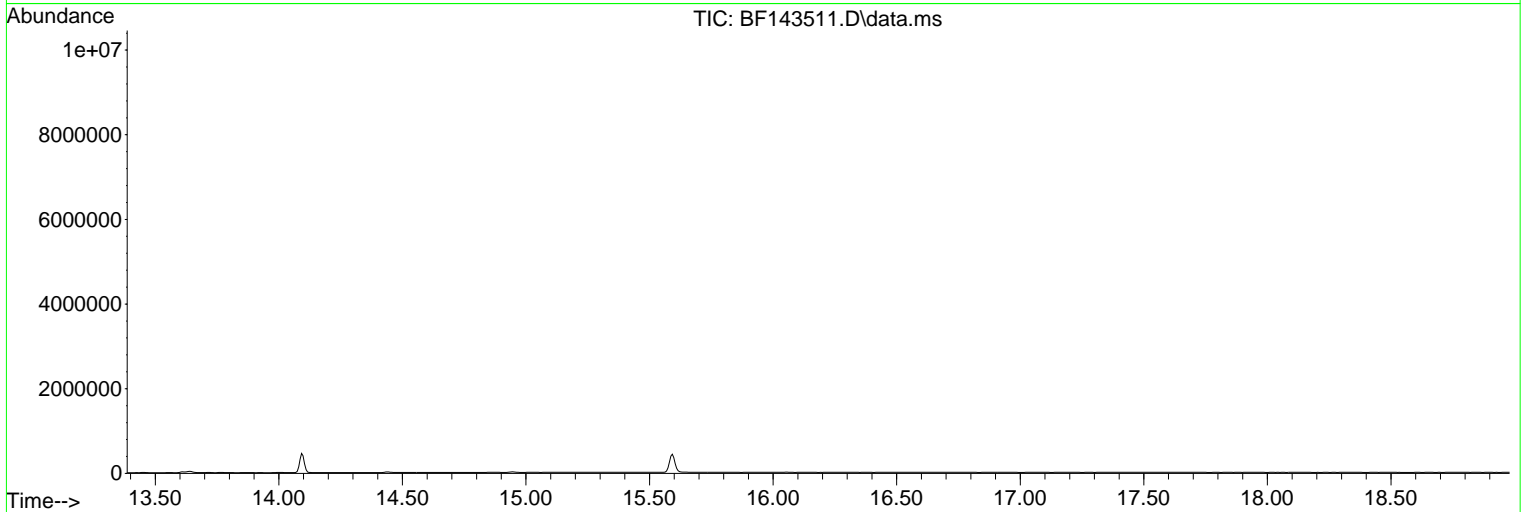
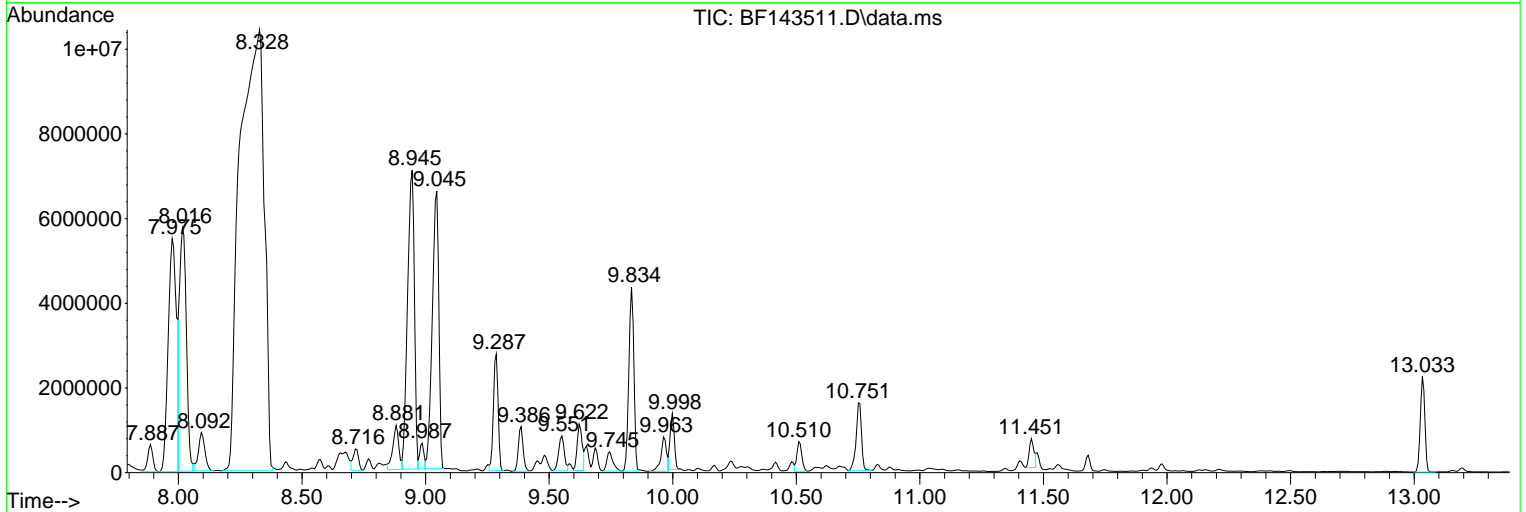
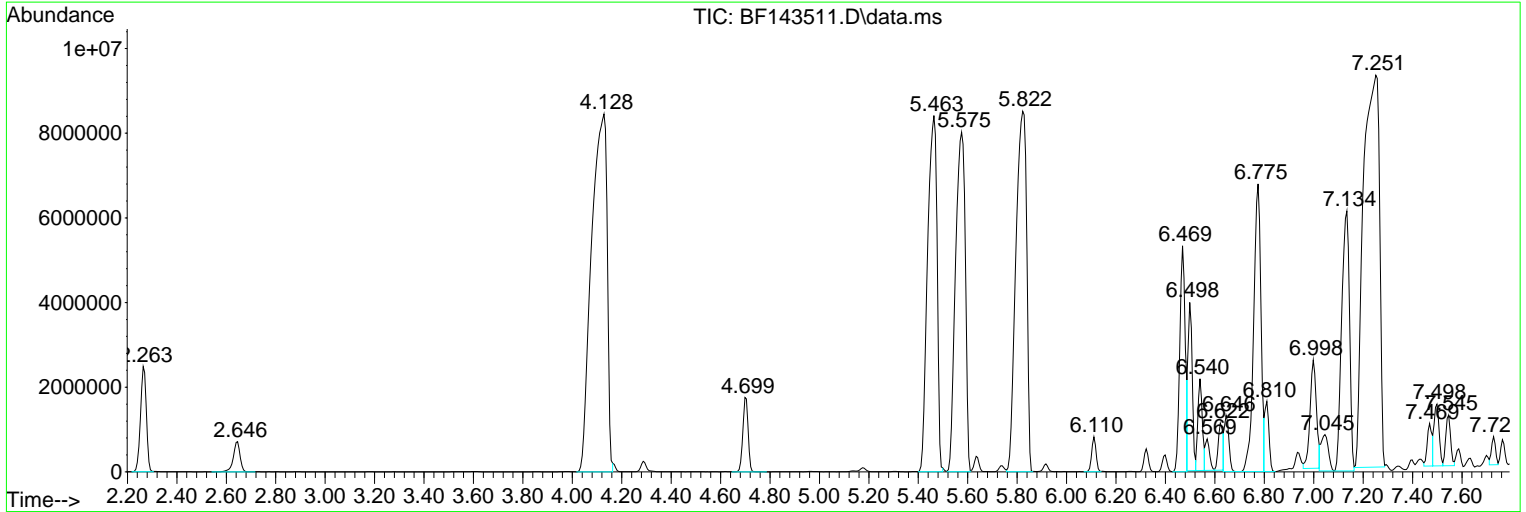
Sum of corrected areas: 369283547

Data Path : Z:\svoasrv\HPCHEM1\BNA\_F\Data\BF082025\  
 Data File : BF143511.D  
 Acq On : 21 Aug 2025 04:21  
 Operator : RC/JU  
 Sample : Q2900-02  
 Misc :  
 ALS Vial : 35 Sample Multiplier: 1

Instrument :  
 BNA\_F  
 ClientSampleId :  
 MN-12C-081825

Quant Method : Z:\svoasrv\HPCHEM1\BNA\_F\Methods\8270-BF082025.M  
 Quant Title : ASP BNA STANDARDS FOR 5 POINT CALIBRATION

TIC Library : C:\Database\NIST20.L  
 TIC Integration Parameters: LSCINT.P



Data Path : Z:\svoasrv\HPCHEM1\BNA\_F\Data\BF082025\  
 Data File : BF143511.D  
 Acq On : 21 Aug 2025 04:21  
 Operator : RC/JU  
 Sample : Q2900-02  
 Misc :  
 ALS Vial : 35 Sample Multiplier: 1

Instrument :  
 BNA\_F  
 ClientSampleId :  
 MN-12C-081825

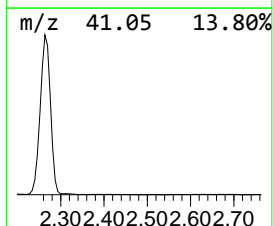
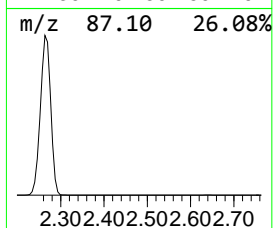
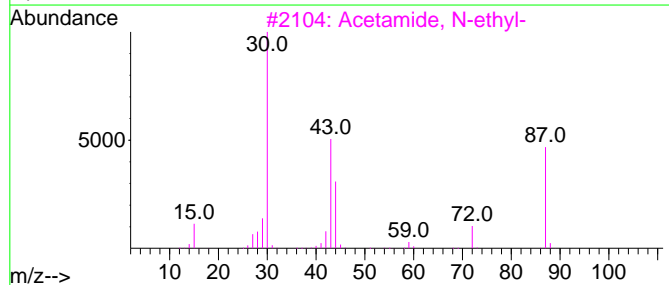
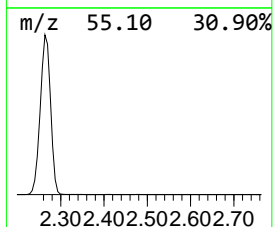
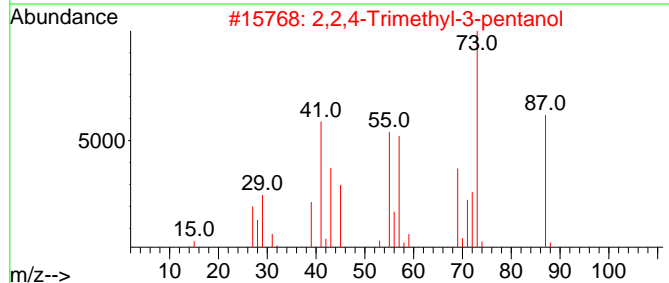
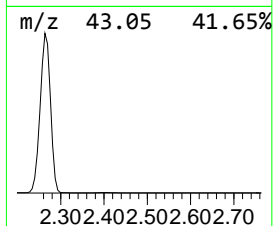
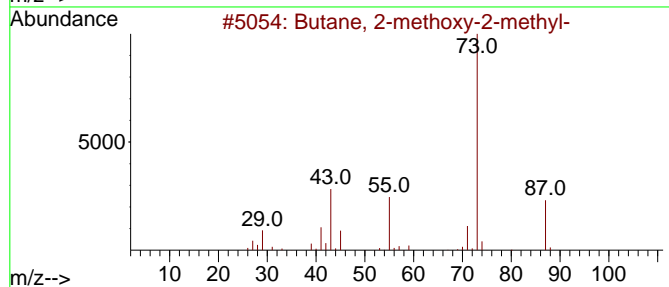
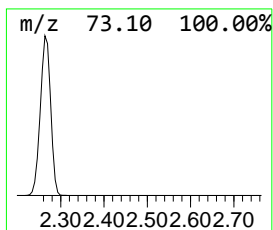
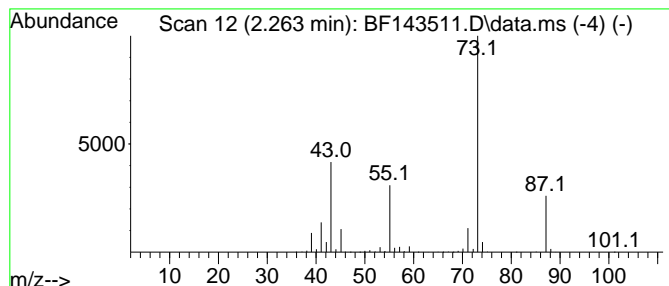
Quant Method : Z:\svoasrv\HPCHEM1\BNA\_F\Methods\8270-BF082025.M  
 Quant Title : ASP BNA STANDARDS FOR 5 POINT CALIBRATION

TIC Library : C:\Database\NIST20.L  
 TIC Integration Parameters: LSCINT.P

\*\*\*\*\*  
 Peak Number 1 Butane, 2-methoxy-2-methyl- Concentration Rank 12

R.T.	EstConc	Area	Relative to ISTD	R.T.
2.263	17.83 ng	4088360	1,4-Dichlorobenzene-d4	6.934

Hit#	of	5	Tentative ID	MW	MolForm	CAS#	Qual
1			Butane, 2-methoxy-2-methyl-	102	C6H14O	000994-05-8	83
2			2,2,4-Trimethyl-3-pentanol	130	C8H18O	005162-48-1	39
3			Acetamide, N-ethyl-	87	C4H9NO	000625-50-3	27
4			1,3-Dioxolane, 2-methyl-	88	C4H8O2	000497-26-7	25
5			Octanal, 7-methoxy-3,7-dimethyl-	186	C11H22O2	003613-30-7	17



Data Path : Z:\svoasrv\HPCHEM1\BNA\_F\Data\BF082025\  
 Data File : BF143511.D  
 Acq On : 21 Aug 2025 04:21  
 Operator : RC/JU  
 Sample : Q2900-02  
 Misc :  
 ALS Vial : 35 Sample Multiplier: 1

Instrument :  
 BNA\_F  
 ClientSampleId :  
 MN-12C-081825

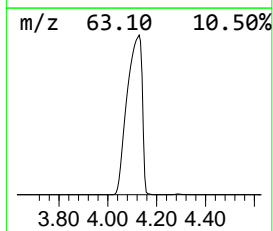
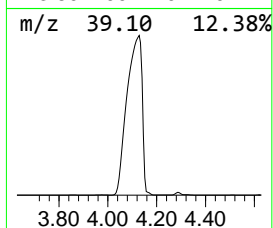
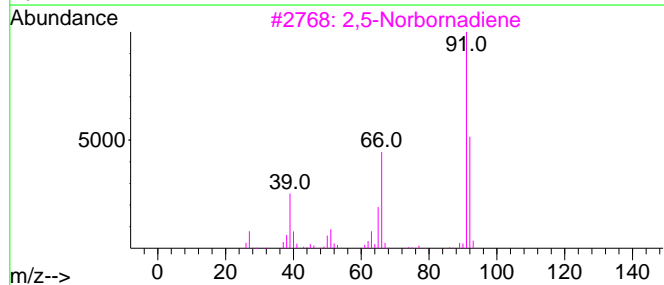
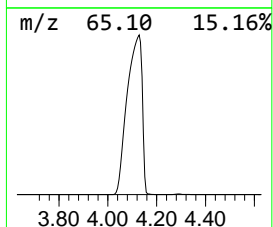
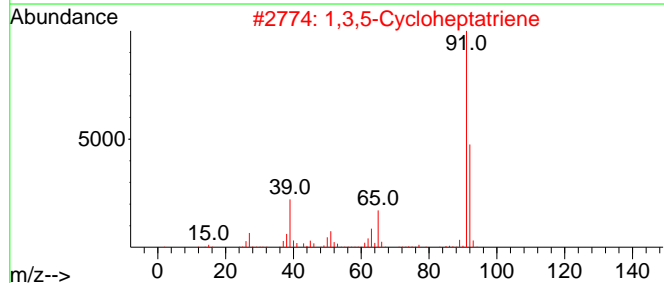
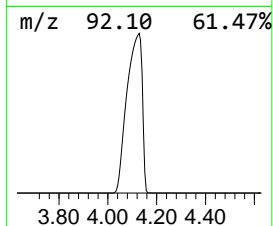
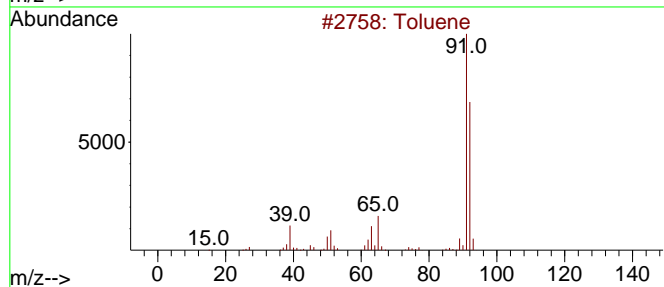
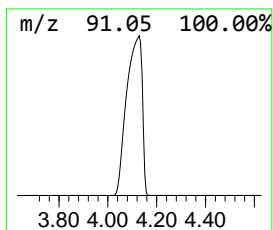
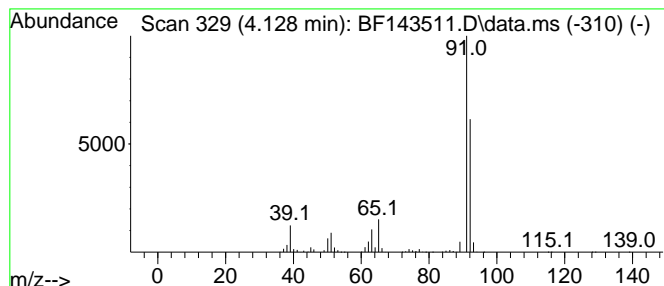
Quant Method : Z:\svoasrv\HPCHEM1\BNA\_F\Methods\8270-BF082025.M  
 Quant Title : ASP BNA STANDARDS FOR 5 POINT CALIBRATION

TIC Library : C:\Database\NIST20.L  
 TIC Integration Parameters: LSCINT.P

\*\*\*\*\*  
 Peak Number 3 1,3,5-Cycloheptatriene Concentration Rank 2

R.T.	EstConc	Area	Relative to ISTD	R.T.
4.128	161.68 ng	37080200	1,4-Dichlorobenzene-d4	6.934

Hit#	of	5	Tentative ID	MW	MolForm	CAS#	Qual
1			Toluene	92	C7H8	000108-88-3	95
2			1,3,5-Cycloheptatriene	92	C7H8	000544-25-2	90
3			2,5-Norbornadiene	92	C7H8	000121-46-0	83
4			Molybdenum, di-.mu.-chlorobis[(1... 532	C20H26Cl2Mo2	035625-66-2	72	
5			Tetracyclo[3.2.0.0(2,7).0(4,6)]h...	92	C7H8	000278-06-8	59



Data Path : Z:\svoasrv\HPCHEM1\BNA\_F\Data\BF082025\  
 Data File : BF143511.D  
 Acq On : 21 Aug 2025 04:21  
 Operator : RC/JU  
 Sample : Q2900-02  
 Misc :  
 ALS Vial : 35 Sample Multiplier: 1

Instrument :  
 BNA\_F  
 ClientSampleId :  
 MN-12C-081825

Quant Method : Z:\svoasrv\HPCHEM1\BNA\_F\Methods\8270-BF082025.M  
 Quant Title : ASP BNA STANDARDS FOR 5 POINT CALIBRATION

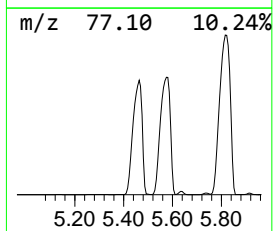
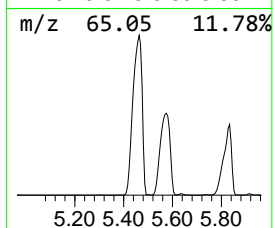
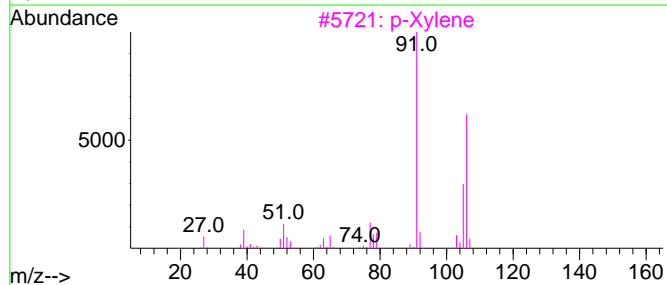
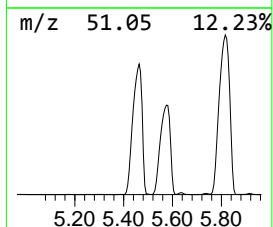
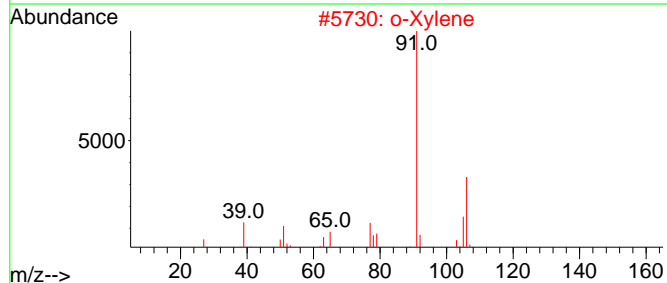
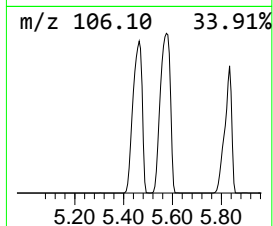
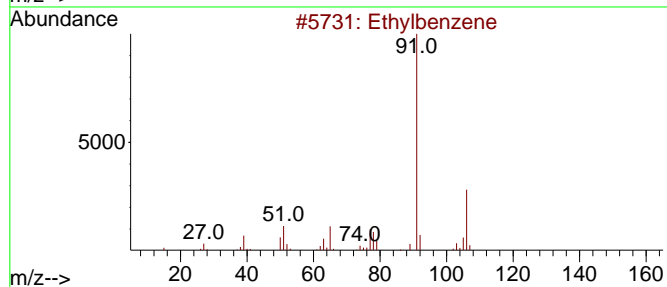
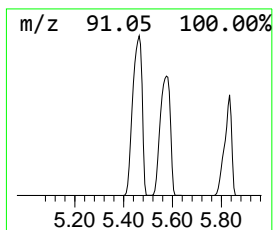
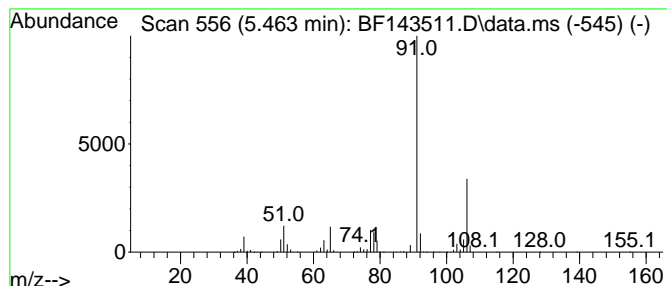
TIC Library : C:\Database\NIST20.L  
 TIC Integration Parameters: LSCINT.P

\*\*\*\*\*  
 Peak Number 5 1,3-Cyclopentadiene, 5-(1-m... Concentration Rank 4

R.T.	EstConc	Area	Relative to ISTD	R.T.
5.463	97.59 ng	22382000	1,4-Dichlorobenzene-d4	6.934

Hit#	of 5	Tentative ID	MW	MolForm	CAS#	Qual
1		Ethylbenzene	106	C8H10	000100-41-4	95
2		o-Xylene	106	C8H10	000095-47-6	91
3		p-Xylene	106	C8H10	000106-42-3	80
4		1,3-Cyclopentadiene, 5-(1-methyl...	106	C8H10	002175-91-9	80
5		Benzene, 1,3-dimethyl-	106	C8H10	000108-38-3	64



Data Path : Z:\svoasrv\HPCHEM1\BNA\_F\Data\BF082025\  
 Data File : BF143511.D  
 Acq On : 21 Aug 2025 04:21  
 Operator : RC/JU  
 Sample : Q2900-02  
 Misc :  
 ALS Vial : 35 Sample Multiplier: 1

Instrument :  
 BNA\_F  
 ClientSampleId :  
 MN-12C-081825

Quant Method : Z:\svoasrv\HPCHEM1\BNA\_F\Methods\8270-BF082025.M  
 Quant Title : ASP BNA STANDARDS FOR 5 POINT CALIBRATION

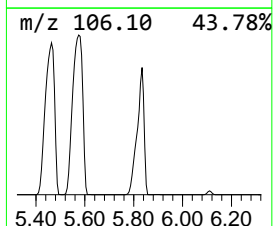
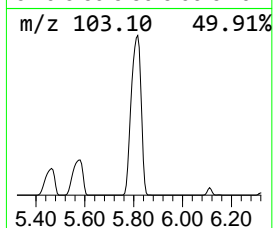
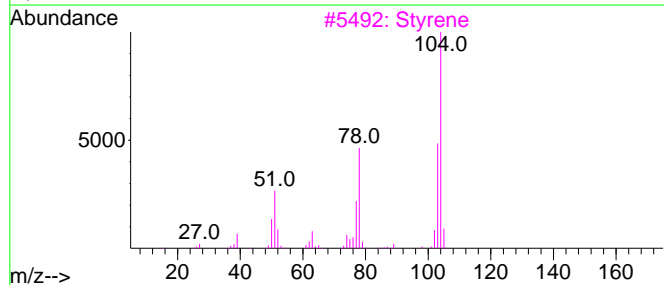
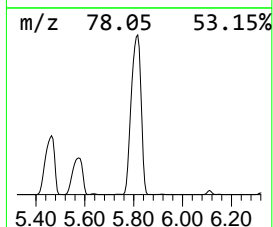
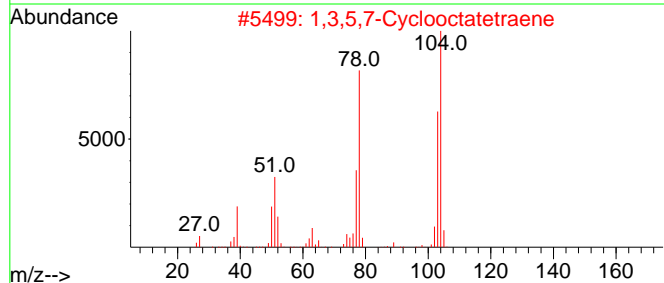
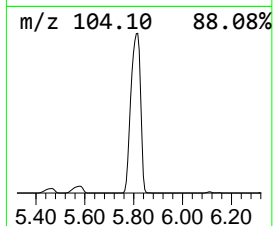
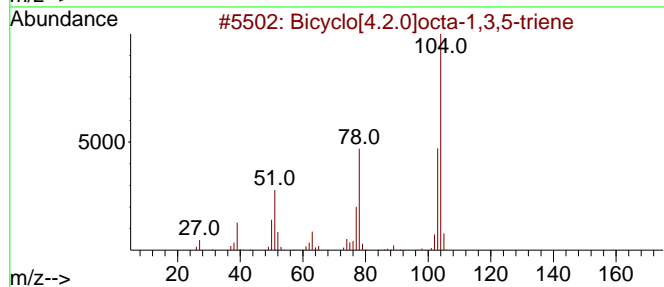
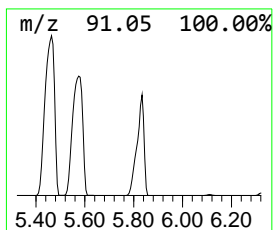
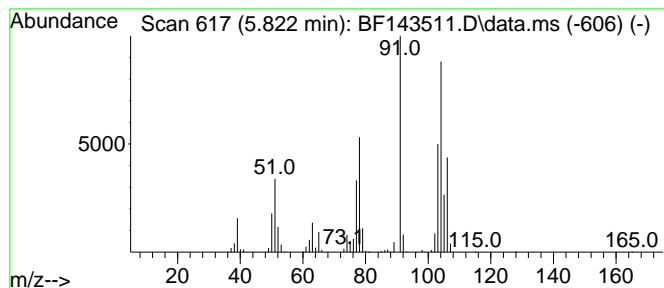
TIC Library : C:\Database\NIST20.L  
 TIC Integration Parameters: LSCINT.P

\*\*\*\*\*  
 Peak Number 6 Bicyclo[4.2.0]octa-1,3,5-tr... Concentration Rank 3

R.T.	EstConc	Area	Relative to ISTD	R.T.
5.822	112.20 ng	25730800	1,4-Dichlorobenzene-d4	6.934

Hit#	of 5	Tentative ID	MW	MolForm	CAS#	Qual
1		Bicyclo[4.2.0]octa-1,3,5-triene	104	C8H8	000694-87-1	94
2		1,3,5,7-Cyclooctatetraene	104	C8H8	000629-20-9	93
3		Styrene	104	C8H8	000100-42-5	93
4		1-Cyclohexene, 1-ethynyl-	106	C8H10	1000327-56-5	55
5		1,3,7-Octatrien-5-yne	104	C8H8	016607-77-5	46



Data Path : Z:\svoasrv\HPCHEM1\BNA\_F\Data\BF082025\  
 Data File : BF143511.D  
 Acq On : 21 Aug 2025 04:21  
 Operator : RC/JU  
 Sample : Q2900-02  
 Misc :  
 ALS Vial : 35 Sample Multiplier: 1

Instrument :  
 BNA\_F  
 ClientSampleId :  
 MN-12C-081825

Quant Method : Z:\svoasrv\HPCHEM1\BNA\_F\Methods\8270-BF082025.M  
 Quant Title : ASP BNA STANDARDS FOR 5 POINT CALIBRATION

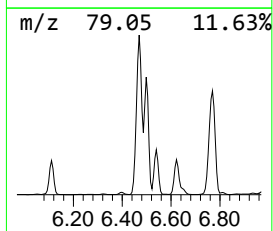
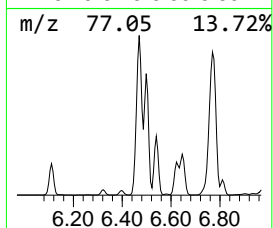
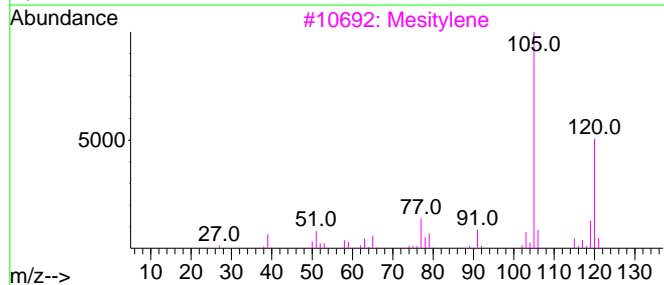
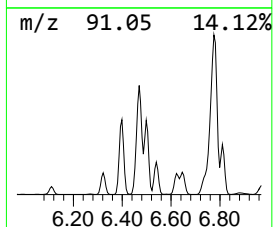
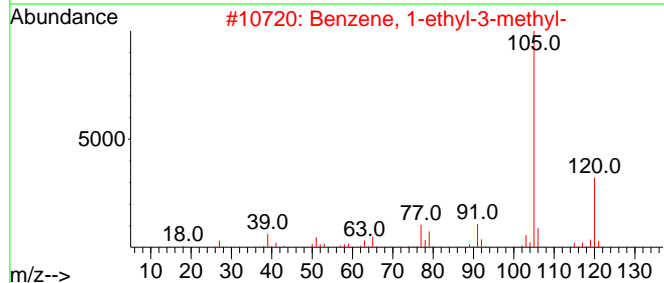
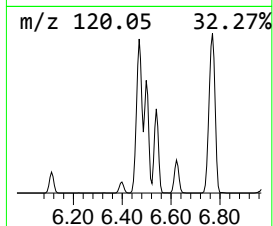
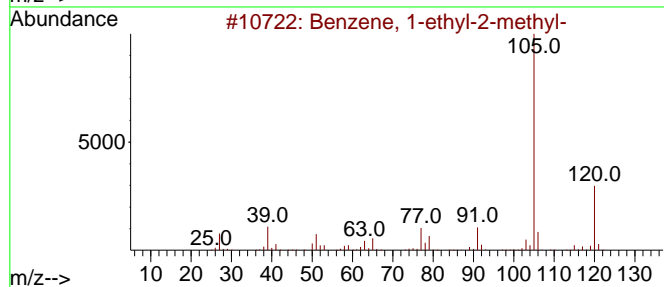
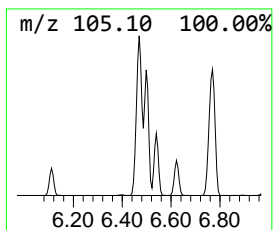
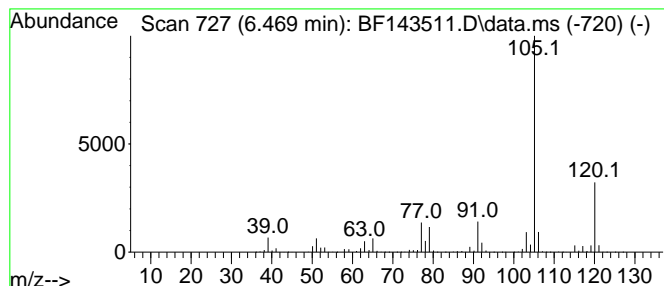
TIC Library : C:\Database\NIST20.L  
 TIC Integration Parameters: LSCINT.P

\*\*\*\*\*  
 Peak Number 7 Benzene, 1-ethyl-2-methyl- Concentration Rank 7

R.T.	EstConc	Area	Relative to ISTD	R.T.
6.469	37.15 ng	8519180	1,4-Dichlorobenzene-d4	6.934

Hit#	of 5	Tentative ID	MW	MolForm	CAS#	Qual
1		Benzene, 1-ethyl-2-methyl-	120	C9H12	000611-14-3	95
2		Benzene, 1-ethyl-3-methyl-	120	C9H12	000620-14-4	94
3		Mesitylene	120	C9H12	000108-67-8	91
4		Benzene, 1-ethyl-4-methyl-	120	C9H12	000622-96-8	91
5		Benzene, 1,2,3-trimethyl-	120	C9H12	000526-73-8	91





Data Path : Z:\svoasrv\HPCHEM1\BNA\_F\Data\BF082025\  
 Data File : BF143511.D  
 Acq On : 21 Aug 2025 04:21  
 Operator : RC/JU  
 Sample : Q2900-02  
 Misc :  
 ALS Vial : 35 Sample Multiplier: 1

Instrument :  
 BNA\_F  
 ClientSampleId :  
 MN-12C-081825

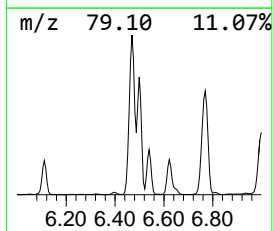
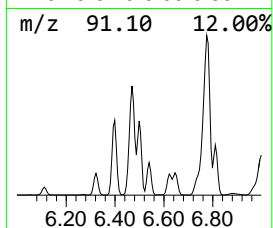
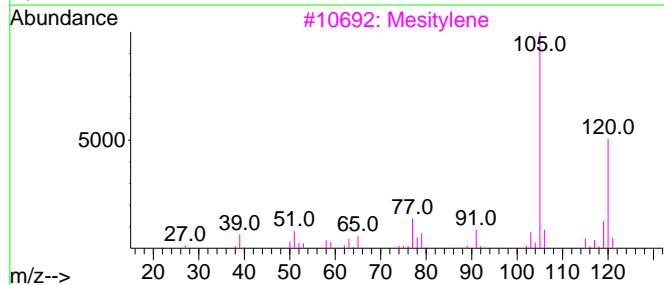
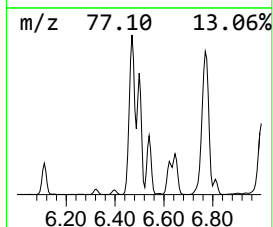
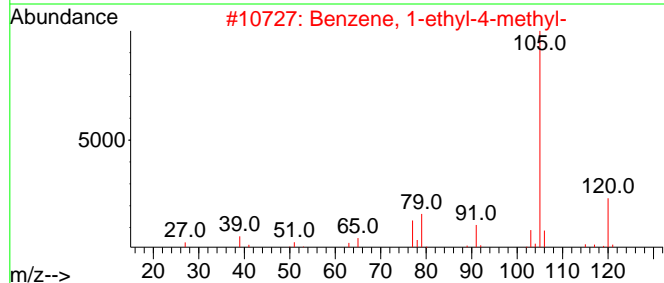
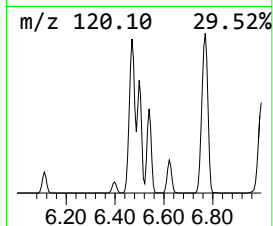
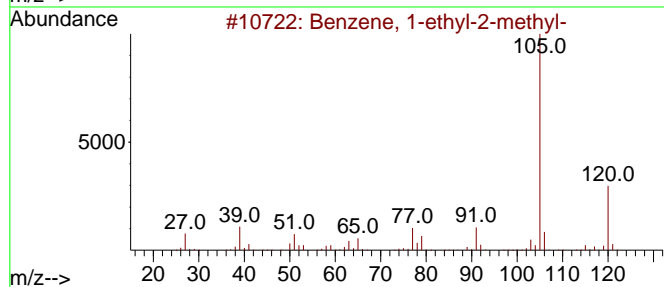
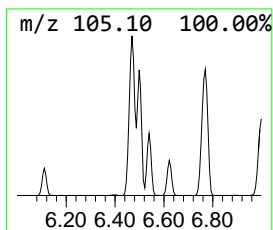
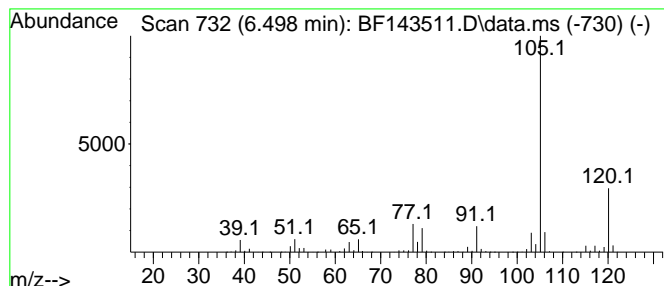
Quant Method : Z:\svoasrv\HPCHEM1\BNA\_F\Methods\8270-BF082025.M  
 Quant Title : ASP BNA STANDARDS FOR 5 POINT CALIBRATION

TIC Library : C:\Database\NIST20.L  
 TIC Integration Parameters: LSCINT.P

\*\*\*\*\*  
 Peak Number 8 Benzene, 1-ethyl-4-methyl- Concentration Rank 11

R.T.	EstConc	Area	Relative to ISTD	R.T.
6.498	19.63 ng	4502860	1,4-Dichlorobenzene-d4	6.934

Hit#	of	5	Tentative ID	MW	MolForm	CAS#	Qual
1			Benzene, 1-ethyl-2-methyl-	120	C9H12	000611-14-3	94
2			Benzene, 1-ethyl-4-methyl-	120	C9H12	000622-96-8	94
3			Mesitylene	120	C9H12	000108-67-8	91
4			Benzene, 1,2,4-trimethyl-	120	C9H12	000095-63-6	91
5			Benzene, 1-ethyl-3-methyl-	120	C9H12	000620-14-4	91



Data Path : Z:\svoasrv\HPCHEM1\BNA\_F\Data\BF082025\  
 Data File : BF143511.D  
 Acq On : 21 Aug 2025 04:21  
 Operator : RC/JU  
 Sample : Q2900-02  
 Misc :  
 ALS Vial : 35 Sample Multiplier: 1

Instrument :  
 BNA\_F  
 ClientSampleId :  
 MN-12C-081825

Quant Method : Z:\svoasrv\HPCHEM1\BNA\_F\Methods\8270-BF082025.M  
 Quant Title : ASP BNA STANDARDS FOR 5 POINT CALIBRATION

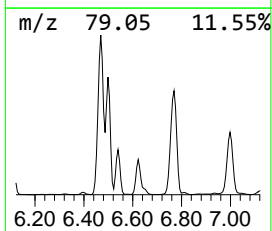
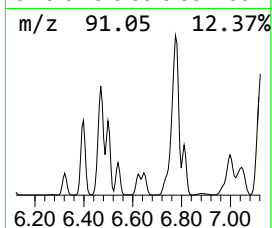
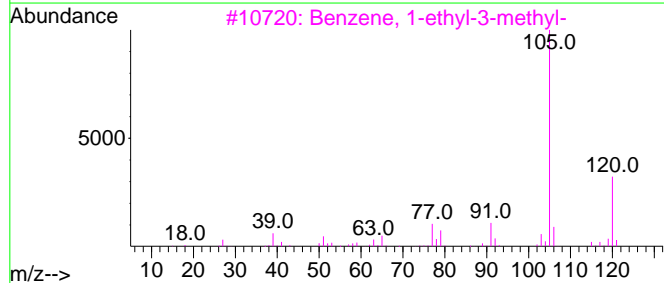
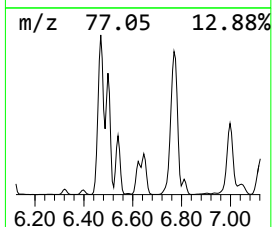
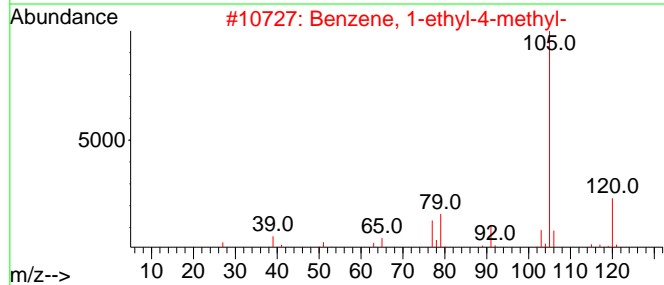
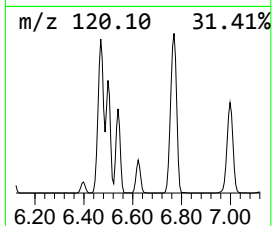
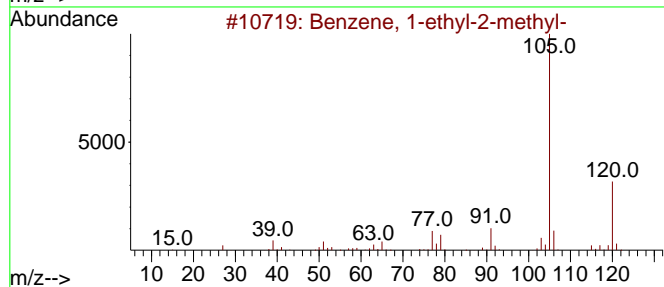
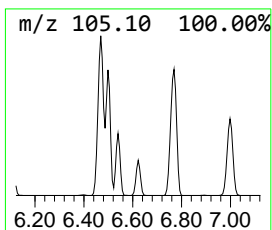
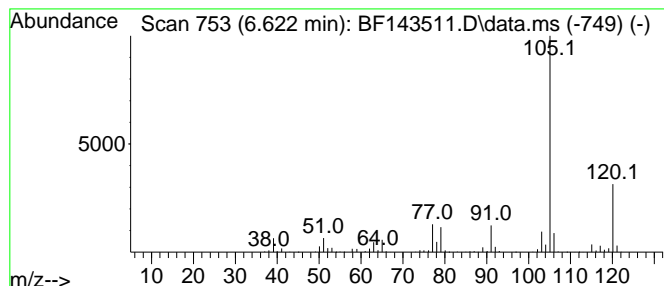
TIC Library : C:\Database\NIST20.L  
 TIC Integration Parameters: LSCINT.P

\*\*\*\*\*  
 Peak Number 9 Benzene, 1-ethyl-3-methyl- Concentration Rank 19

R.T.	EstConc	Area	Relative to ISTD	R.T.
6.622	6.62 ng	1517450	1,4-Dichlorobenzene-d4	6.934

Hit#	of	5	Tentative ID	MW	MolForm	CAS#	Qual
1			Benzene, 1-ethyl-2-methyl-	120	C9H12	000611-14-3	94
2			Benzene, 1-ethyl-4-methyl-	120	C9H12	000622-96-8	94
3			Benzene, 1-ethyl-3-methyl-	120	C9H12	000620-14-4	91
4			Mesitylene	120	C9H12	000108-67-8	91
5			Benzene, 1,2,4-trimethyl-	120	C9H12	000095-63-6	91



Data Path : Z:\svoasrv\HPCHEM1\BNA\_F\Data\BF082025\  
 Data File : BF143511.D  
 Acq On : 21 Aug 2025 04:21  
 Operator : RC/JU  
 Sample : Q2900-02  
 Misc :  
 ALS Vial : 35 Sample Multiplier: 1

Instrument :  
 BNA\_F  
 ClientSampleId :  
 MN-12C-081825

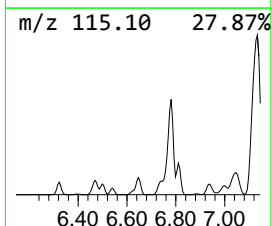
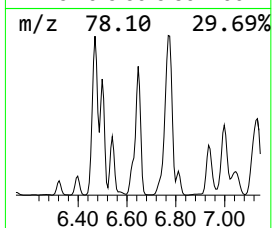
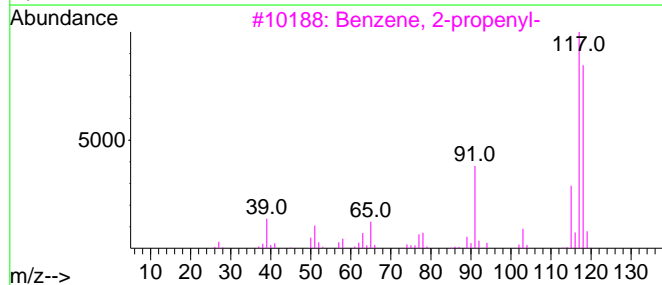
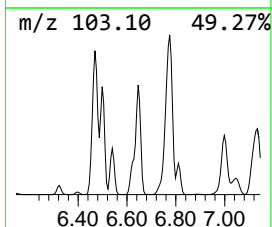
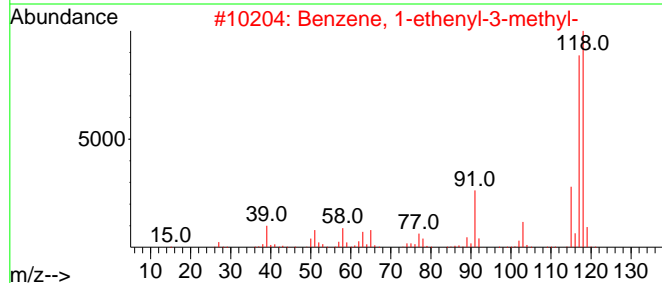
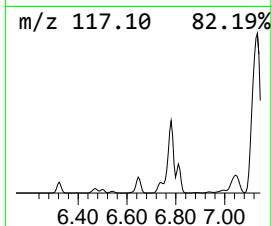
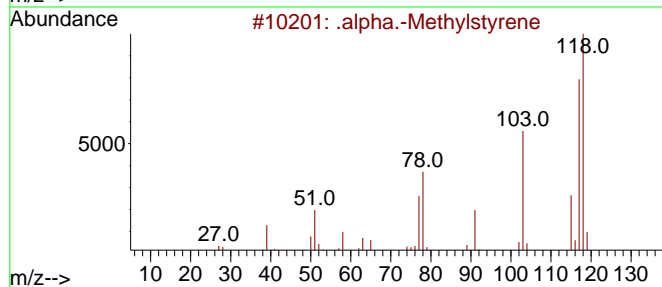
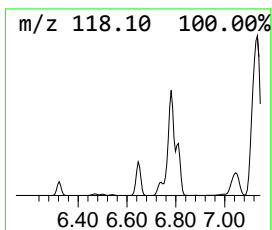
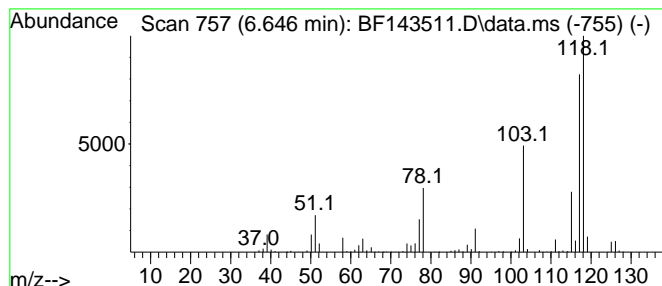
Quant Method : Z:\svoasrv\HPCHEM1\BNA\_F\Methods\8270-BF082025.M  
 Quant Title : ASP BNA STANDARDS FOR 5 POINT CALIBRATION

TIC Library : C:\Database\NIST20.L  
 TIC Integration Parameters: LSCINT.P

\*\*\*\*\*  
 Peak Number 10 .alpha.-Methylstyrene Concentration Rank 17

R.T.	EstConc	Area	Relative to ISTD	R.T.
6.646	7.08 ng	1622960	1,4-Dichlorobenzene-d4	6.934

Hit#	of 5	Tentative ID	MW	MolForm	CAS#	Qual
1		.alpha.-Methylstyrene	118	C9H10	000098-83-9	91
2		Benzene, 1-ethenyl-3-methyl-	118	C9H10	000100-80-1	52
3		Benzene, 2-propenyl-	118	C9H10	000300-57-2	50
4		Benzene, 1-ethenyl-4-methyl-	118	C9H10	000622-97-9	50
5		3-Phenyl-1-propanol, acetate	178	C11H14O2	000122-72-5	50



Data Path : Z:\svoasrv\HPCHEM1\BNA\_F\Data\BF082025\  
 Data File : BF143511.D  
 Acq On : 21 Aug 2025 04:21  
 Operator : RC/JU  
 Sample : Q2900-02  
 Misc :  
 ALS Vial : 35 Sample Multiplier: 1

Instrument :  
 BNA\_F  
 ClientSampleId :  
 MN-12C-081825

Quant Method : Z:\svoasrv\HPCHEM1\BNA\_F\Methods\8270-BF082025.M  
 Quant Title : ASP BNA STANDARDS FOR 5 POINT CALIBRATION

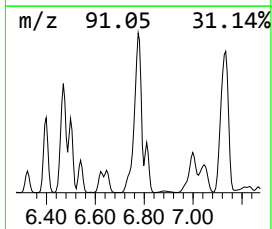
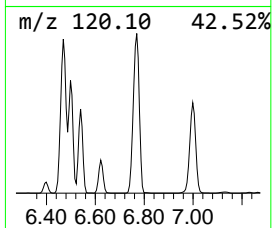
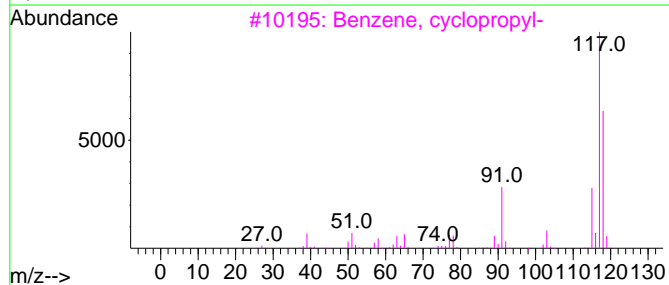
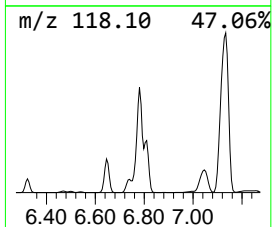
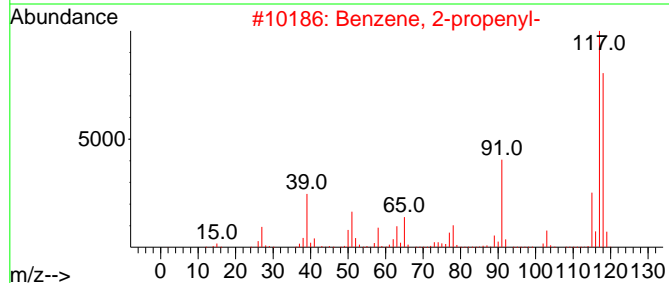
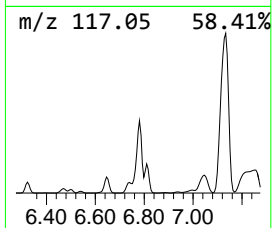
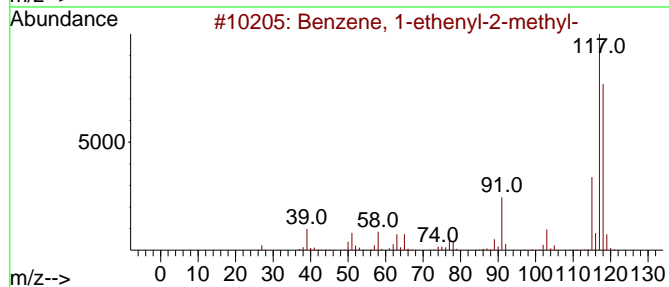
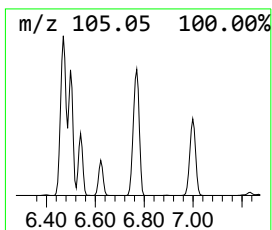
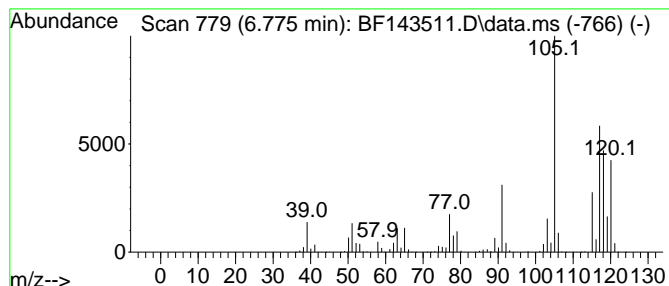
TIC Library : C:\Database\NIST20.L  
 TIC Integration Parameters: LSCINT.P

\*\*\*\*\*  
 Peak Number 11 Benzene, 1-ethenyl-2-methyl- Concentration Rank 5

R.T.	EstConc	Area	Relative to ISTD	R.T.
6.775	61.90 ng	14196000	1,4-Dichlorobenzene-d4	6.934

Hit#	of 5	Tentative ID	MW	MolForm	CAS#	Qual
1		Benzene, 1-ethenyl-2-methyl-	118	C9H10	000611-15-4	64
2		Benzene, 2-propenyl-	118	C9H10	000300-57-2	46
3		Benzene, cyclopropyl-	118	C9H10	000873-49-4	46
4		Benzene, 1-ethenyl-4-methyl-	118	C9H10	000622-97-9	46
5		Benzene, 1,2,3-trimethyl-	120	C9H12	000526-73-8	46



Data Path : Z:\svoasrv\HPCHEM1\BNA\_F\Data\BF082025\  
 Data File : BF143511.D  
 Acq On : 21 Aug 2025 04:21  
 Operator : RC/JU  
 Sample : Q2900-02  
 Misc :  
 ALS Vial : 35 Sample Multiplier: 1

Instrument :  
 BNA\_F  
 ClientSampleId :  
 MN-12C-081825

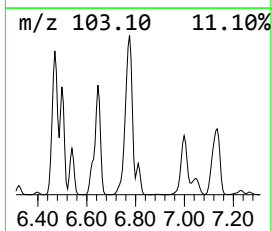
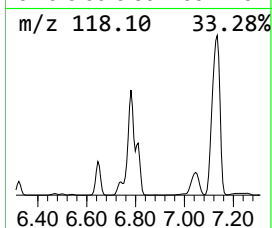
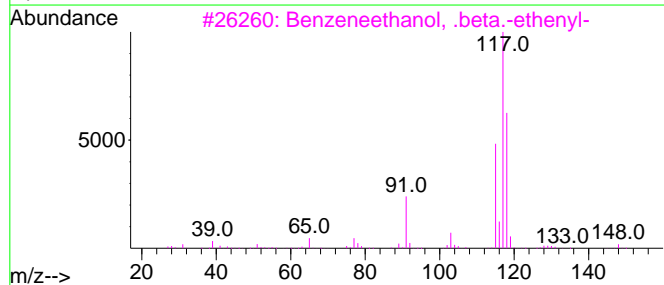
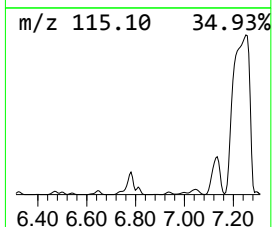
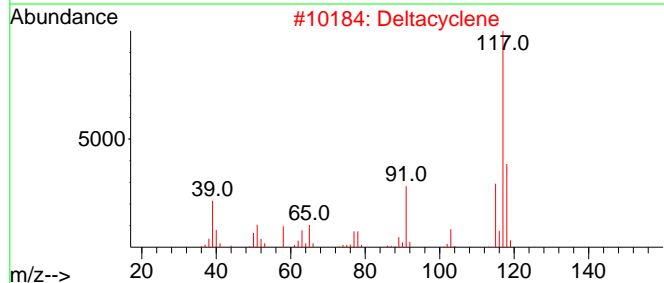
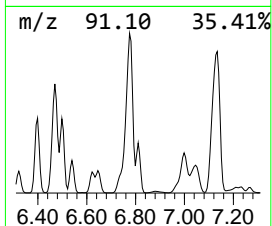
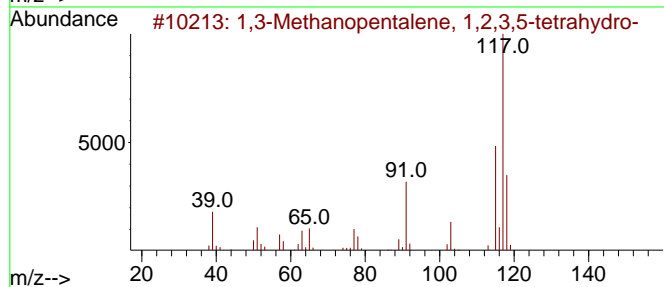
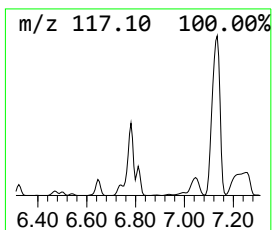
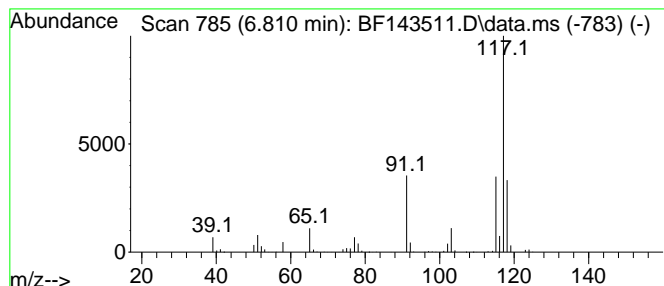
Quant Method : Z:\svoasrv\HPCHEM1\BNA\_F\Methods\8270-BF082025.M  
 Quant Title : ASP BNA STANDARDS FOR 5 POINT CALIBRATION

TIC Library : C:\Database\NIST20.L  
 TIC Integration Parameters: LSCINT.P

\*\*\*\*\*  
 Peak Number 12 1,3-Methanopentalene, 1,2,3... Concentration Rank 15

R.T.	EstConc	Area	Relative to ISTD	R.T.
6.810	7.94 ng	1819820	1,4-Dichlorobenzene-d4	6.934

Hit#	of 5	Tentative ID	MW	MolForm	CAS#	Qual
1		1,3-Methanopentalene, 1,2,3,5-te...	118	C9H10	128600-88-4	87
2		Deltacyclene	118	C9H10	007785-10-6	72
3		Benzeneethanol, .beta.-ethenyl-	148	C10H12O	006052-63-7	50
4		Benzene, 1-ethenyl-2-methyl-	118	C9H10	000611-15-4	46
5		Benzene, 1-ethenyl-4-methyl-	118	C9H10	000622-97-9	46



Data Path : Z:\svoasrv\HPCHEM1\BNA\_F\Data\BF082025\  
 Data File : BF143511.D  
 Acq On : 21 Aug 2025 04:21  
 Operator : RC/JU  
 Sample : Q2900-02  
 Misc :  
 ALS Vial : 35 Sample Multiplier: 1

Instrument :  
 BNA\_F  
 ClientSampleId :  
 MN-12C-081825

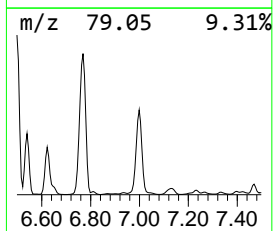
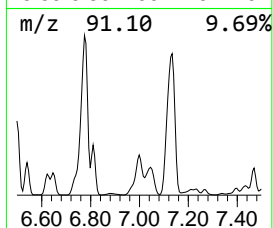
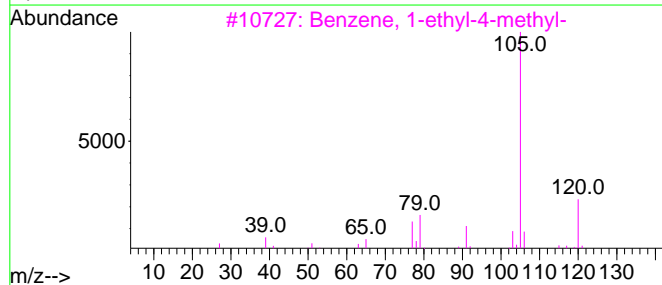
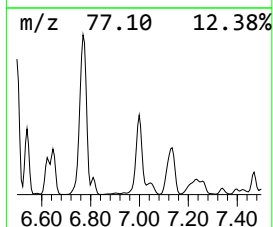
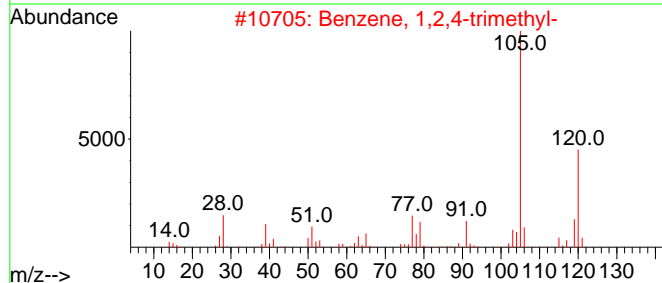
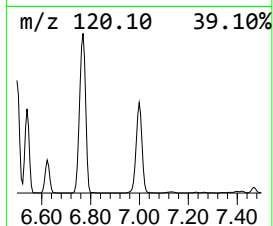
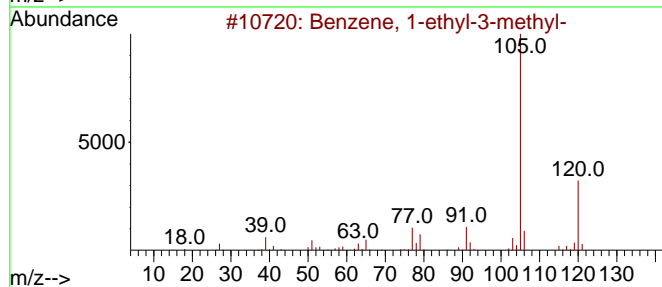
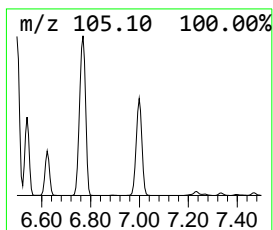
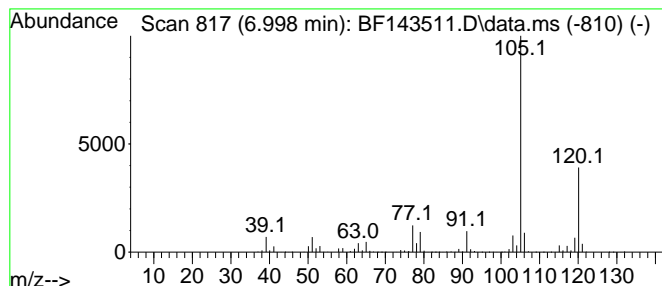
Quant Method : Z:\svoasrv\HPCHEM1\BNA\_F\Methods\8270-BF082025.M  
 Quant Title : ASP BNA STANDARDS FOR 5 POINT CALIBRATION

TIC Library : C:\Database\NIST20.L  
 TIC Integration Parameters: LSCINT.P

\*\*\*\*\*  
 Peak Number 13 Benzene, 1,2,4-trimethyl- Concentration Rank 10

R.T.	EstConc	Area	Relative to ISTD	R.T.
6.998	20.00 ng	4586740	1,4-Dichlorobenzene-d4	6.934

Hit#	of	5	Tentative ID	MW	MolForm	CAS#	Qual
1			Benzene, 1-ethyl-3-methyl-	120	C9H12	000620-14-4	94
2			Benzene, 1,2,4-trimethyl-	120	C9H12	000095-63-6	94
3			Benzene, 1-ethyl-4-methyl-	120	C9H12	000622-96-8	91
4			Benzene, 1-ethyl-2-methyl-	120	C9H12	000611-14-3	91
5			Mesitylene	120	C9H12	000108-67-8	91



Data Path : Z:\svoasrv\HPCHEM1\BNA\_F\Data\BF082025\  
 Data File : BF143511.D  
 Acq On : 21 Aug 2025 04:21  
 Operator : RC/JU  
 Sample : Q2900-02  
 Misc :  
 ALS Vial : 35 Sample Multiplier: 1

Instrument :  
 BNA\_F  
 ClientSampleId :  
 MN-12C-081825

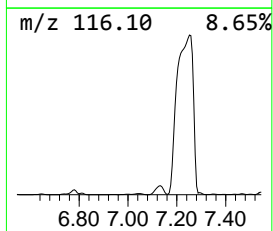
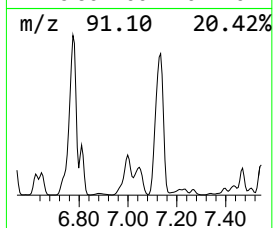
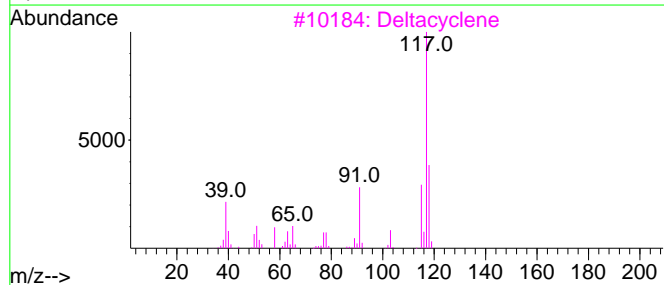
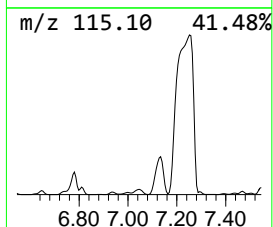
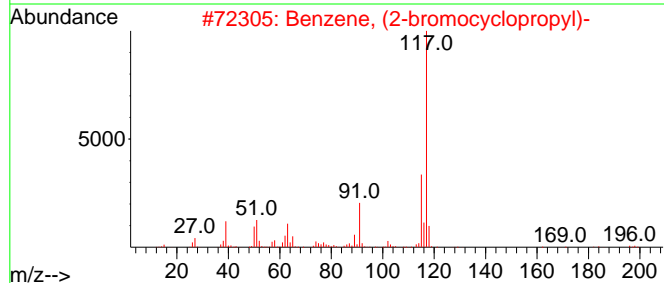
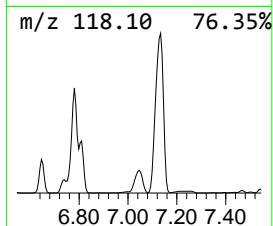
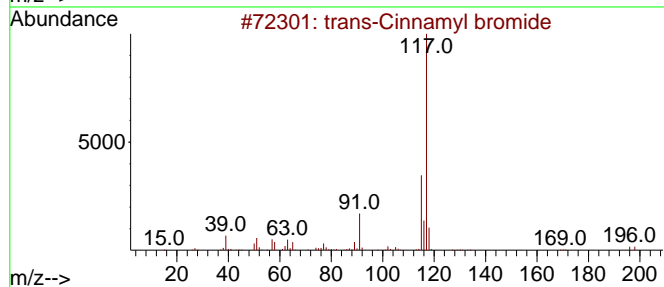
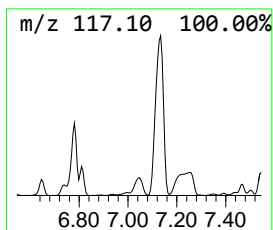
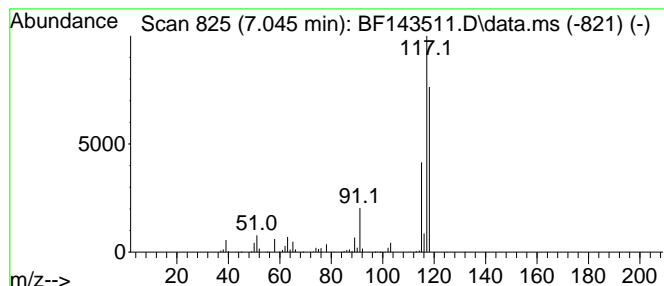
Quant Method : Z:\svoasrv\HPCHEM1\BNA\_F\Methods\8270-BF082025.M  
 Quant Title : ASP BNA STANDARDS FOR 5 POINT CALIBRATION

TIC Library : C:\Database\NIST20.L  
 TIC Integration Parameters: LSCINT.P

\*\*\*\*\*  
 Peak Number 14 unknown7.045 Concentration Rank 16

R.T.	EstConc	Area	Relative to ISTD	R.T.
7.045	7.68 ng	1761540	1,4-Dichlorobenzene-d4	6.934

Hit#	of 5	Tentative ID	MW	MolForm	CAS#	Qual
1		trans-Cinnamyl bromide	196	C9H9Br	026146-77-0	47
2		Benzene, (2-bromocyclopropyl)-	196	C9H9Br	036617-02-4	43
3		Deltacyclene	118	C9H10	007785-10-6	43
4		1,3-Methanopentalene, 1,2,3,5-te...	118	C9H10	128600-88-4	38
5		Indole	117	C8H7N	000120-72-9	30



Data Path : Z:\svoasrv\HPCHEM1\BNA\_F\Data\BF082025\  
 Data File : BF143511.D  
 Acq On : 21 Aug 2025 04:21  
 Operator : RC/JU  
 Sample : Q2900-02  
 Misc :  
 ALS Vial : 35 Sample Multiplier: 1

Instrument :  
 BNA\_F  
 ClientSampleId :  
 MN-12C-081825

Quant Method : Z:\svoasrv\HPCHEM1\BNA\_F\Methods\8270-BF082025.M  
 Quant Title : ASP BNA STANDARDS FOR 5 POINT CALIBRATION

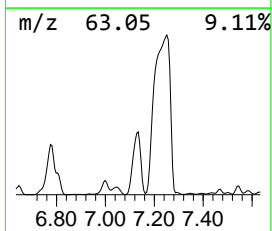
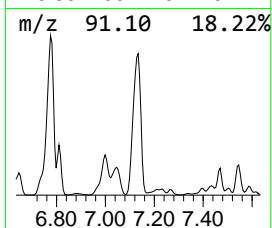
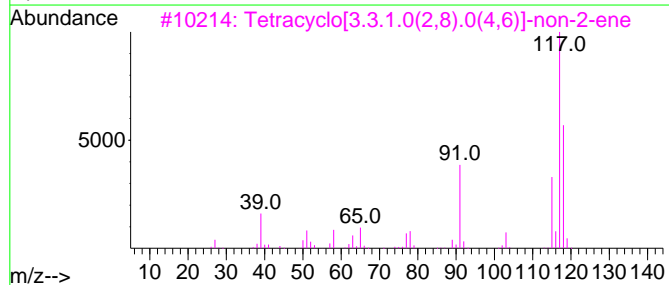
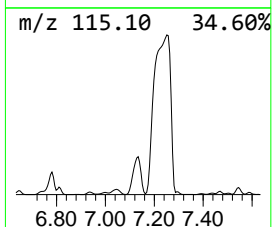
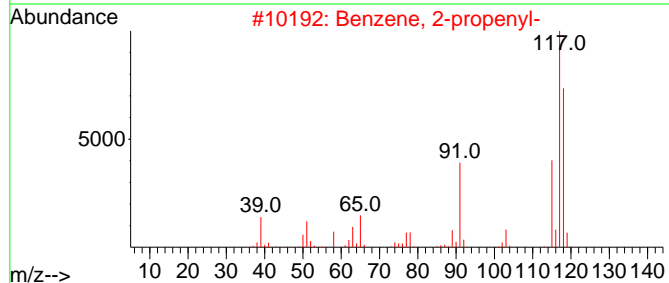
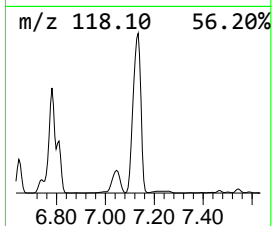
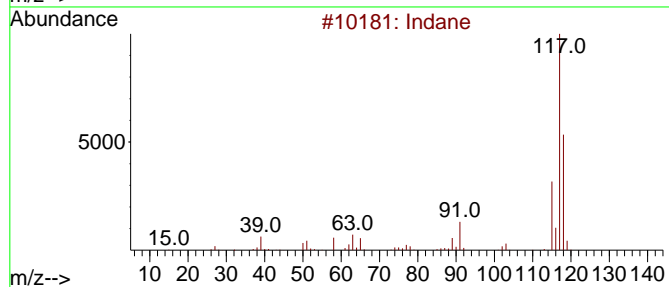
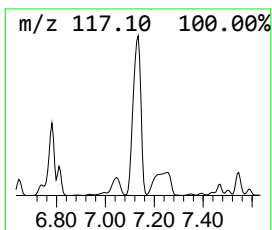
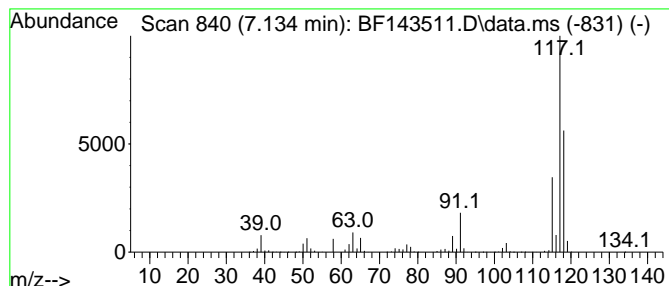
TIC Library : C:\Database\NIST20.L  
 TIC Integration Parameters: LSCINT.P

\*\*\*\*\*  
 Peak Number 15 Indane Concentration Rank 6

R.T.	EstConc	Area	Relative to ISTD	R.T.
7.134	59.00 ng	13529800	1,4-Dichlorobenzene-d4	6.934

Hit#	of 5	Tentative ID	MW	MolForm	CAS#	Qual
1		Indane	118	C9H10	000496-11-7	93
2		Benzene, 2-propenyl-	118	C9H10	000300-57-2	81
3		Tetracyclo[3.3.1.0(2,8).0(4,6)]-...	118	C9H10	1000191-13-7	80
4		Benzene, 1-ethenyl-2-methyl-	118	C9H10	000611-15-4	64
5		Benzene, cyclopropyl-	118	C9H10	000873-49-4	53





Data Path : Z:\svoasrv\HPCHEM1\BNA\_F\Data\BF082025\  
 Data File : BF143511.D  
 Acq On : 21 Aug 2025 04:21  
 Operator : RC/JU  
 Sample : Q2900-02  
 Misc :  
 ALS Vial : 35 Sample Multiplier: 1

Instrument :  
 BNA\_F  
 ClientSampleId :  
 MN-12C-081825

Quant Method : Z:\svoasrv\HPCHEM1\BNA\_F\Methods\8270-BF082025.M  
 Quant Title : ASP BNA STANDARDS FOR 5 POINT CALIBRATION

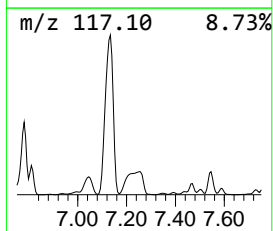
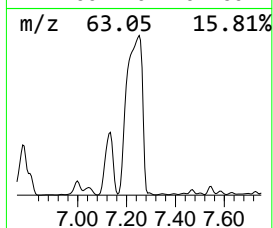
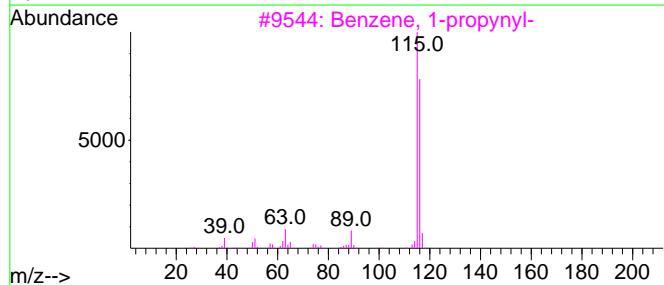
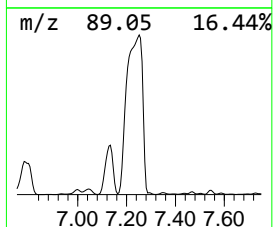
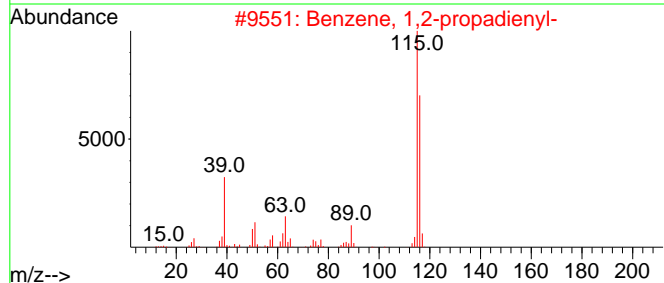
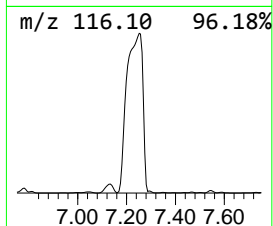
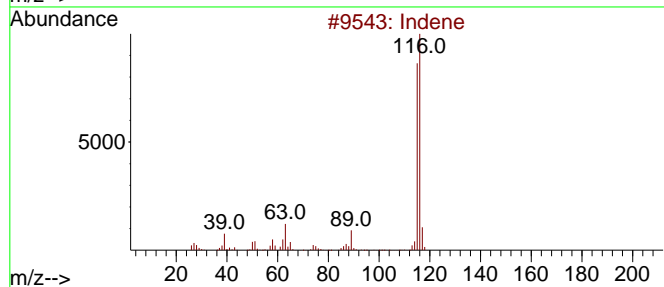
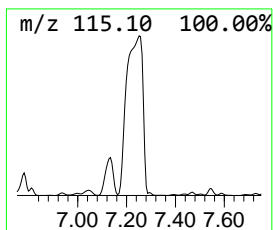
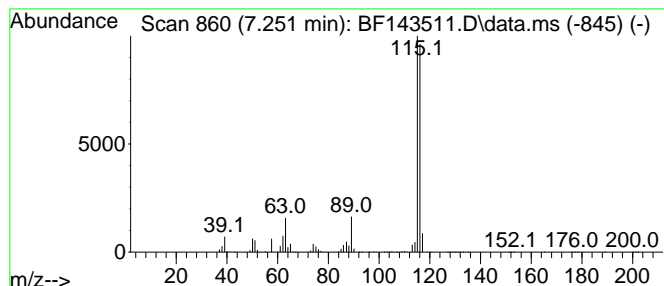
TIC Library : C:\Database\NIST20.L  
 TIC Integration Parameters: LSCINT.P

\*\*\*\*\*  
 Peak Number 16 Indene Concentration Rank 1

R.T.	EstConc	Area	Relative to ISTD	R.T.
7.251	181.20 ng	41555600	1,4-Dichlorobenzene-d4	6.934

Hit#	of 5	Tentative ID	MW	MolForm	CAS#	Qual
1		Indene	116	C9H8	000095-13-6	96
2		Benzene, 1,2-propadienyl-	116	C9H8	002327-99-3	91
3		Benzene, 1-propynyl-	116	C9H8	000673-32-5	91
4		1-Propyne, 3-phenyl-	116	C9H8	010147-11-2	91
5		2-Methylphenylacetylene	116	C9H8	000766-47-2	91



Data Path : Z:\svoasrv\HPCHEM1\BNA\_F\Data\BF082025\  
 Data File : BF143511.D  
 Acq On : 21 Aug 2025 04:21  
 Operator : RC/JU  
 Sample : Q2900-02  
 Misc :  
 ALS Vial : 35 Sample Multiplier: 1

Instrument :  
 BNA\_F  
 ClientSampleId :  
 MN-12C-081825

Quant Method : Z:\svoasrv\HPCHEM1\BNA\_F\Methods\8270-BF082025.M  
 Quant Title : ASP BNA STANDARDS FOR 5 POINT CALIBRATION

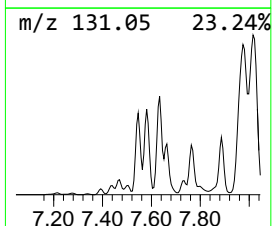
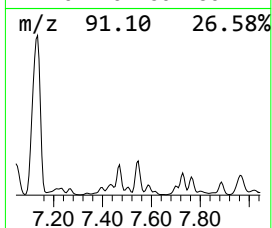
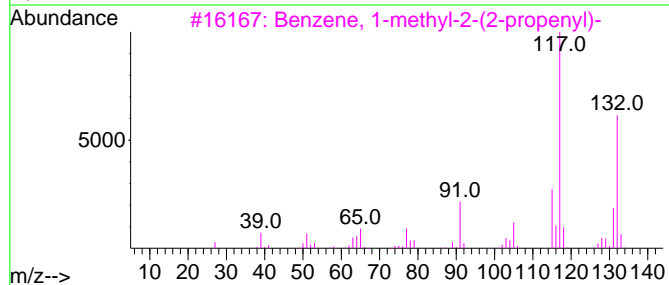
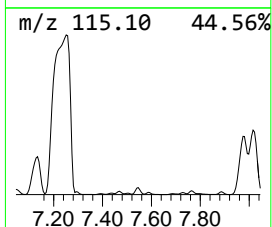
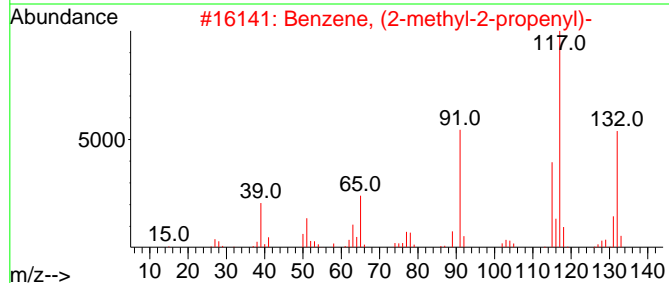
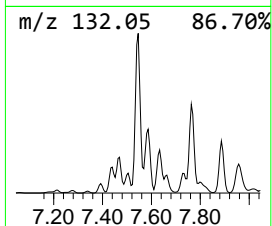
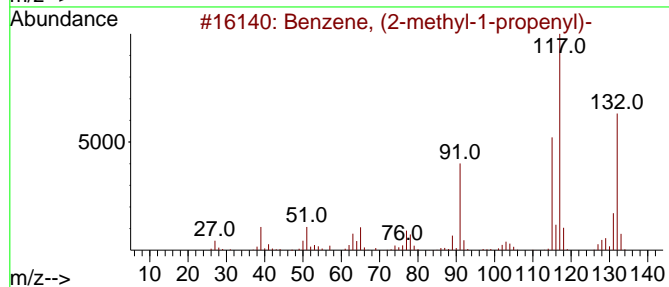
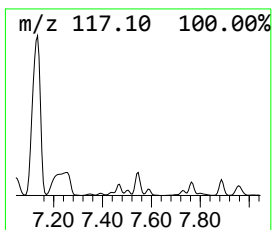
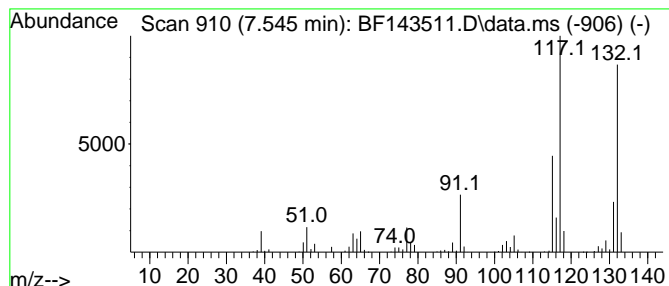
TIC Library : C:\Database\NIST20.L  
 TIC Integration Parameters: LSCINT.P

\*\*\*\*\*  
 Peak Number 17 Benzene, (2-methyl-1-propen... Concentration Rank 18

R.T.	EstConc	Area	Relative to ISTD	R.T.
7.545	7.04 ng	1614580	1,4-Dichlorobenzene-d4	6.934

Hit#	of 5	Tentative ID	MW	MolForm	CAS#	Qual
1		Benzene, (2-methyl-1-propenyl)-	132	C10H12	000768-49-0	96
2		Benzene, (2-methyl-2-propenyl)-	132	C10H12	003290-53-7	95
3		Benzene, 1-methyl-2-(2-propenyl)-	132	C10H12	001587-04-8	95
4		Benzene, 2-butenyl-	132	C10H12	001560-06-1	94
5		2,4-Dimethylstyrene	132	C10H12	002234-20-0	94



Data Path : Z:\svoasrv\HPCHEM1\BNA\_F\Data\BF082025\  
 Data File : BF143511.D  
 Acq On : 21 Aug 2025 04:21  
 Operator : RC/JU  
 Sample : Q2900-02  
 Misc :  
 ALS Vial : 35 Sample Multiplier: 1

Instrument :  
 BNA\_F  
 ClientSampleId :  
 MN-12C-081825

Quant Method : Z:\svoasrv\HPCHEM1\BNA\_F\Methods\8270-BF082025.M  
 Quant Title : ASP BNA STANDARDS FOR 5 POINT CALIBRATION

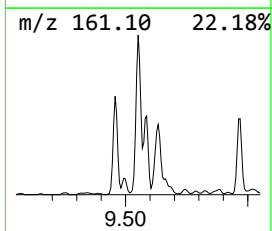
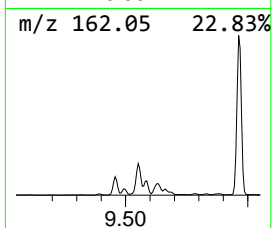
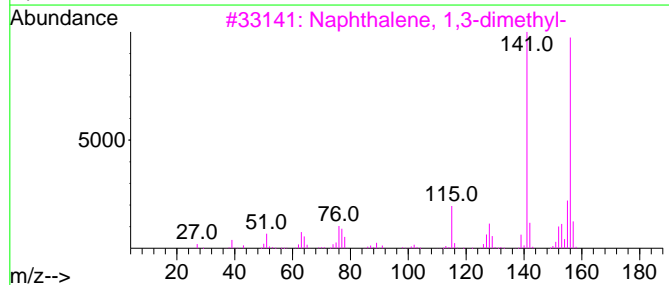
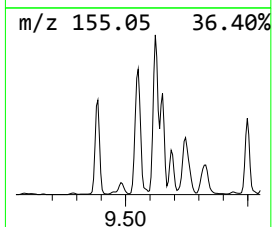
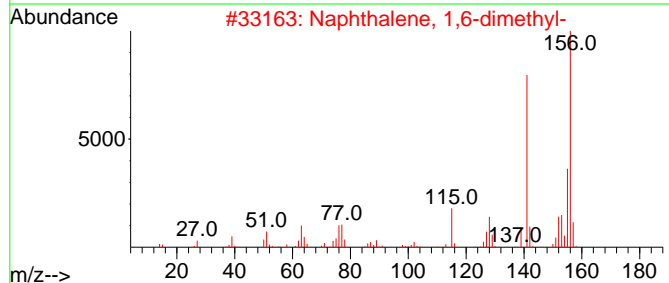
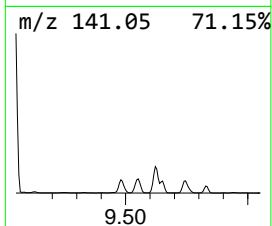
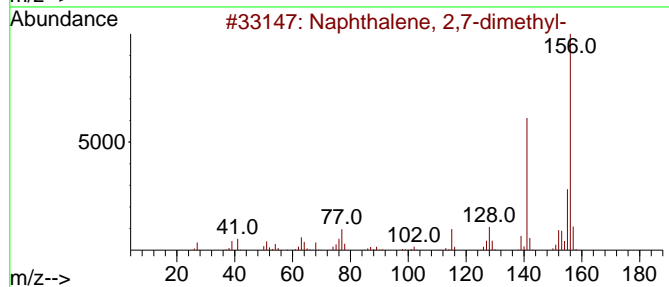
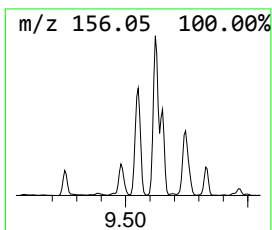
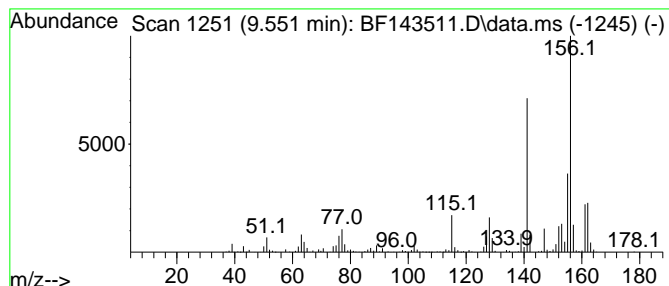
TIC Library : C:\Database\NIST20.L  
 TIC Integration Parameters: LSCINT.P

\*\*\*\*\*  
 Peak Number 18 Naphthalene, 2,7-dimethyl- Concentration Rank 9

R.T.	EstConc	Area	Relative to ISTD	R.T.
9.551	20.21 ng	1308000	Acenaphthene-d10	9.963

Hit#	of 5	Tentative ID	MW	MolForm	CAS#	Qual
1		Naphthalene, 2,7-dimethyl-	156	C12H12	000582-16-1	96
2		Naphthalene, 1,6-dimethyl-	156	C12H12	000575-43-9	96
3		Naphthalene, 1,3-dimethyl-	156	C12H12	000575-41-7	96
4		Naphthalene, 1,7-dimethyl-	156	C12H12	000575-37-1	96
5		Naphthalene, 2,3-dimethyl-	156	C12H12	000581-40-8	96



Data Path : Z:\svoasrv\HPCHEM1\BNA\_F\Data\BF082025\  
 Data File : BF143511.D  
 Acq On : 21 Aug 2025 04:21  
 Operator : RC/JU  
 Sample : Q2900-02  
 Misc :  
 ALS Vial : 35 Sample Multiplier: 1

Instrument :  
 BNA\_F  
 ClientSampleId :  
 MN-12C-081825

Quant Method : Z:\svoasrv\HPCHEM1\BNA\_F\Methods\8270-BF082025.M  
 Quant Title : ASP BNA STANDARDS FOR 5 POINT CALIBRATION

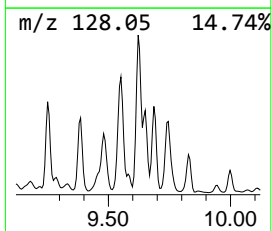
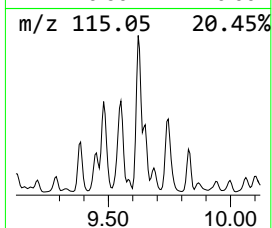
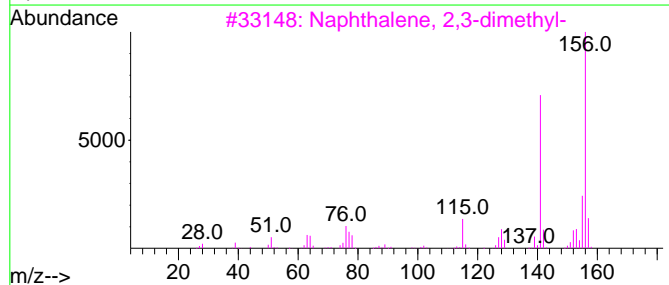
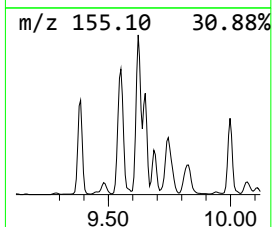
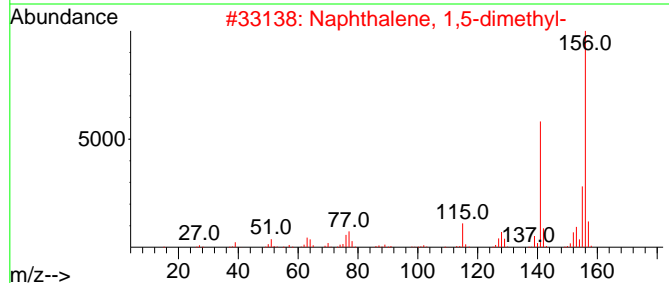
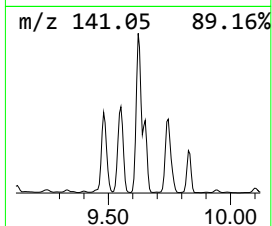
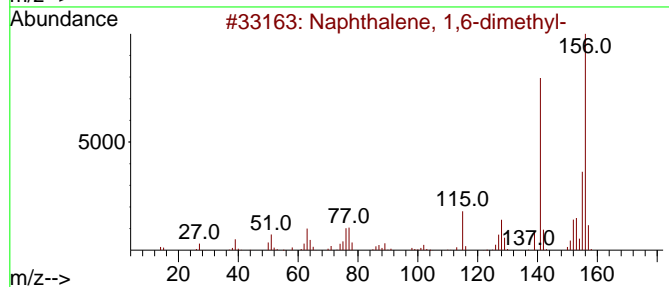
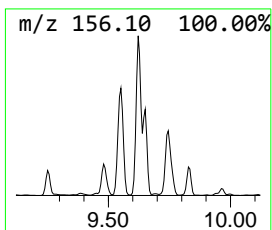
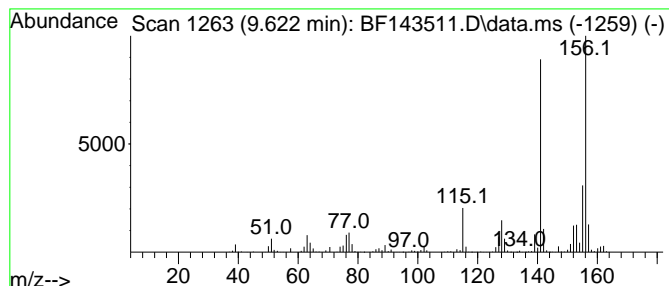
TIC Library : C:\Database\NIST20.L  
 TIC Integration Parameters: LSCINT.P

\*\*\*\*\*  
 Peak Number 19 Naphthalene, 1,6-dimethyl- Concentration Rank 8

R.T.	EstConc	Area	Relative to ISTD	R.T.
9.622	24.01 ng	1553770	Acenaphthene-d10	9.963

Hit# of 5	Tentative ID	MW	MolForm	CAS#	Qual
1	Naphthalene, 1,6-dimethyl-	156	C12H12	000575-43-9	98
2	Naphthalene, 1,5-dimethyl-	156	C12H12	000571-61-9	97
3	Naphthalene, 2,3-dimethyl-	156	C12H12	000581-40-8	97
4	Naphthalene, 2,7-dimethyl-	156	C12H12	000582-16-1	97
5	Naphthalene, 1,7-dimethyl-	156	C12H12	000575-37-1	97



Data Path : Z:\svoasrv\HPCHEM1\BNA\_F\Data\BF082025\  
 Data File : BF143511.D  
 Acq On : 21 Aug 2025 04:21  
 Operator : RC/JU  
 Sample : Q2900-02  
 Misc :  
 ALS Vial : 35 Sample Multiplier: 1

Instrument :  
 BNA\_F  
 ClientSampleId :  
 MN-12C-081825

Quant Method : Z:\svoasrv\HPCHEM1\BNA\_F\Methods\8270-BF082025.M  
 Quant Title : ASP BNA STANDARDS FOR 5 POINT CALIBRATION

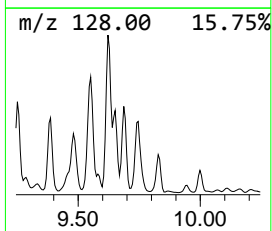
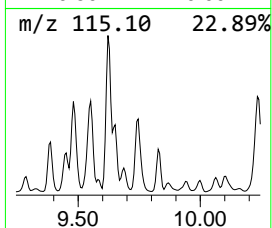
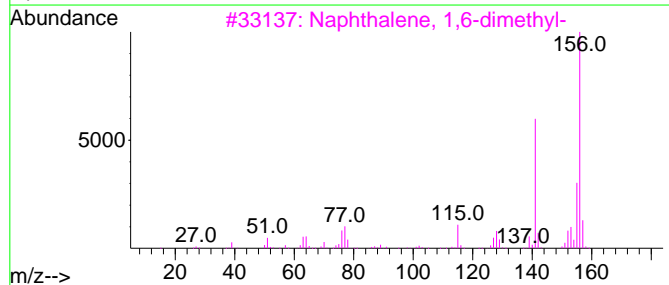
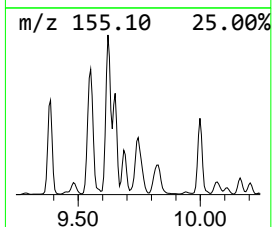
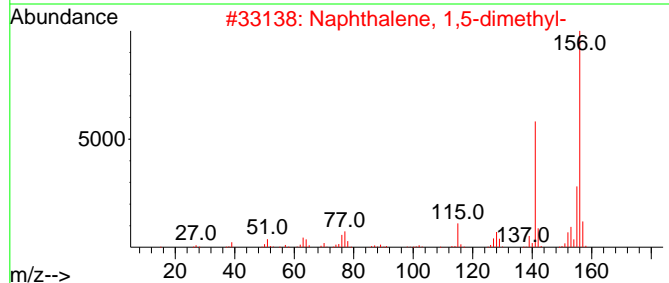
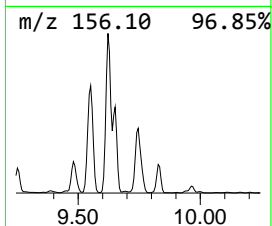
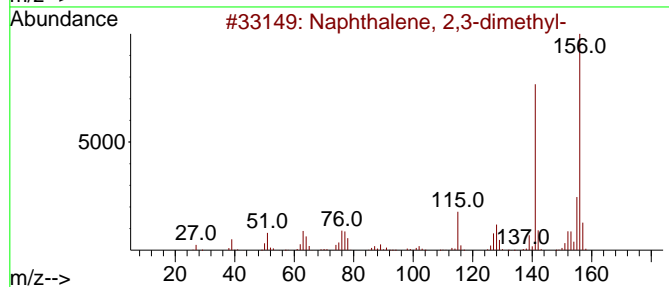
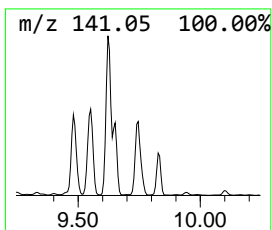
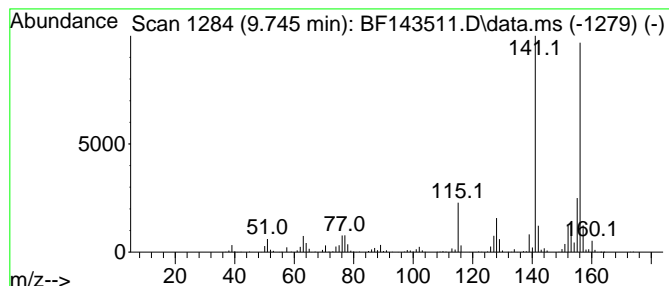
TIC Library : C:\Database\NIST20.L  
 TIC Integration Parameters: LSCINT.P

\*\*\*\*\*  
 Peak Number 20 Naphthalene, 2,3-dimethyl- Concentration Rank 13

R.T.	EstConc	Area	Relative to ISTD	R.T.
9.745	12.24 ng	792281	Acenaphthene-d10	9.963

Hit#	of 5	Tentative ID	MW	MolForm	CAS#	Qual
1		Naphthalene, 2,3-dimethyl-	156	C12H12	000581-40-8	97
2		Naphthalene, 1,5-dimethyl-	156	C12H12	000571-61-9	97
3		Naphthalene, 1,6-dimethyl-	156	C12H12	000575-43-9	96
4		Naphthalene, 1,7-dimethyl-	156	C12H12	000575-37-1	96
5		Naphthalene, 1,2-dimethyl-	156	C12H12	000573-98-8	96



Data Path : Z:\svoasrv\HPCHEM1\BNA\_F\Data\BF082025\  
 Data File : BF143511.D  
 Acq On : 21 Aug 2025 04:21  
 Operator : RC/JU  
 Sample : Q2900-02  
 Misc :  
 ALS Vial : 35 Sample Multiplier: 1

Instrument :  
 BNA\_F  
 ClientSampleId :  
 MN-12C-081825

Quant Method : Z:\svoasrv\HPCHEM1\BNA\_F\Methods\8270-BF082025.M  
 Quant Title : ASP BNA STANDARDS FOR 5 POINT CALIBRATION

TIC Library : C:\Database\NIST20.L  
 TIC Integration Parameters: LSCINT.P

TIC Top Hit name	RT	EstConc	Units	Response	--Internal Standard--			
					#	RT	Resp	Conc
Butane, 2-metho...	2.263	17.8	ng	4088360	1	6.934	4586740	20.0
1,3,5-Cyclohept...	4.128	161.7	ng	37080200	1	6.934	4586740	20.0
1,3-Cyclopentad...	5.463	97.6	ng	22382000	1	6.934	4586740	20.0
Bicyclo[4.2.0]o...	5.822	112.2	ng	25730800	1	6.934	4586740	20.0
Benzene, 1-ethy...	6.469	37.1	ng	8519180	1	6.934	4586740	20.0
Benzene, 1-ethy...	6.498	19.6	ng	4502860	1	6.934	4586740	20.0
Benzene, 1-ethy...	6.622	6.6	ng	1517450	1	6.934	4586740	20.0
.alpha.-Methyls...	6.646	7.1	ng	1622960	1	6.934	4586740	20.0
Benzene, 1-ethe...	6.775	61.9	ng	14196000	1	6.934	4586740	20.0
1,3-Methanopent...	6.810	7.9	ng	1819820	1	6.934	4586740	20.0
Benzene, 1,2,4-...	6.998	20.0	ng	4586740	1	6.934	4586740	20.0
unknown7.045	7.045	7.7	ng	1761540	1	6.934	4586740	20.0
Indane	7.134	59.0	ng	13529800	1	6.934	4586740	20.0
Indene	7.251	181.2	ng	41555600	1	6.934	4586740	20.0
Benzene, (2-met...	7.545	7.0	ng	1614580	1	6.934	4586740	20.0
Naphthalene, 2,...	9.551	20.2	ng	1308000	3	9.963	1294260	20.0
Naphthalene, 1,...	9.622	24.0	ng	1553770	3	9.963	1294260	20.0
Naphthalene, 2,...	9.745	12.2	ng	792281	3	9.963	1294260	20.0