

Data Path : Z:\voasrv\HPCHEM1\MSVOA\_N\Data\VN082525\  
 Data File : VN087658.D  
 Acq On : 25 Aug 2025 15:22  
 Operator : JC\MD  
 Sample : Q2920-01  
 Misc : 5.0mL/MSVOA\_N/WATER  
 ALS Vial : 13 Sample Multiplier: 1

Instrument :  
 MSVOA\_N  
 ClientSampleId :  
 MW1

Quant Time: Aug 26 01:36:41 2025  
 Quant Method : Z:\voasrv\HPCHEM1\MSVOA\_N\methods\82N082125W.M  
 Quant Title : SW846 8260  
 QLast Update : Fri Aug 22 02:55:42 2025  
 Response via : Initial Calibration

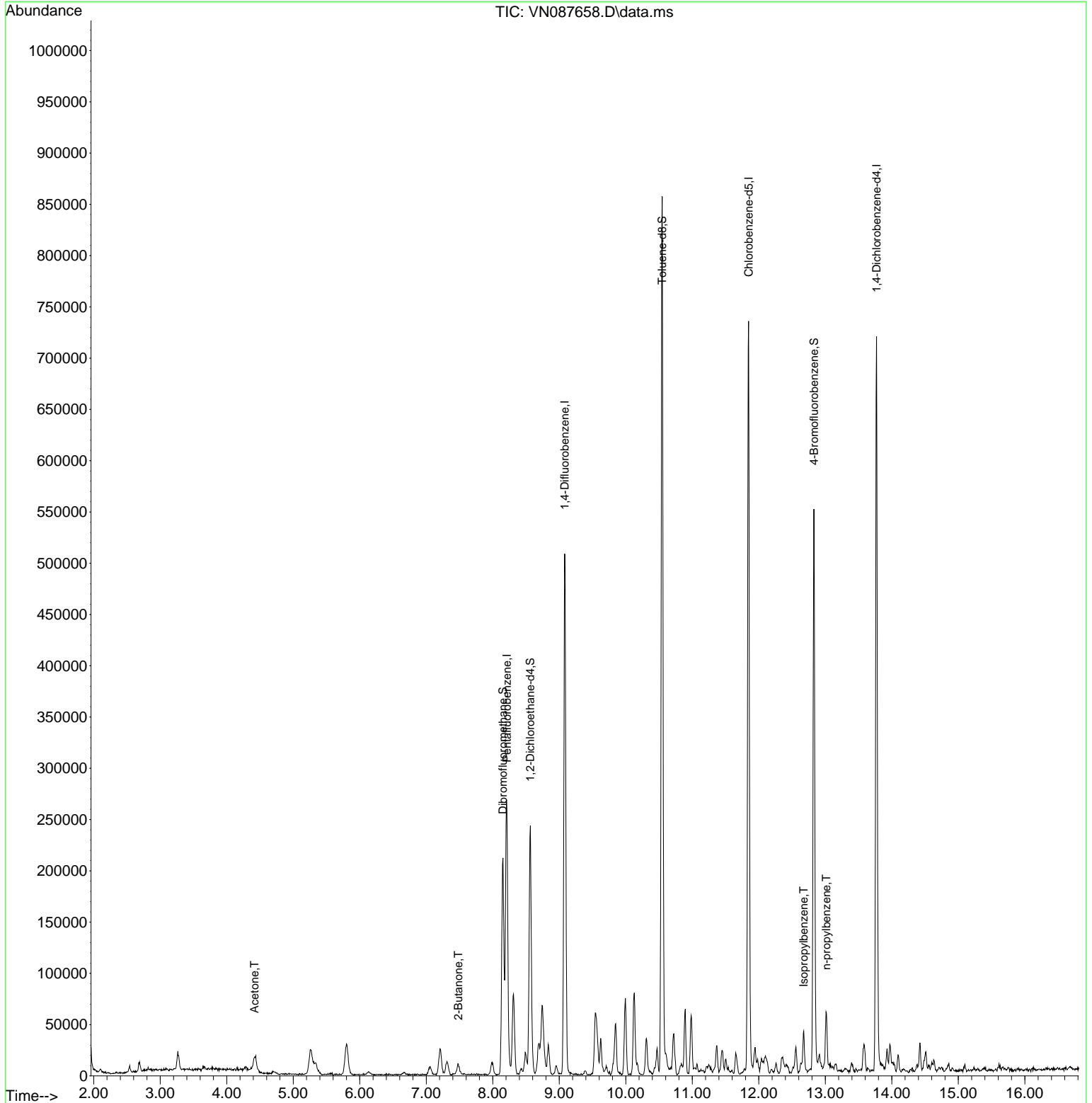
Compound	R.T.	QIon	Response	Conc	Units	Dev(Min)
-----						
Internal Standards						
1) Pentafluorobenzene	8.212	168	184233	50.000	ug/l	0.00
34) 1,4-Difluorobenzene	9.082	114	415914	50.000	ug/l	0.00
63) Chlorobenzene-d5	11.847	117	391372	50.000	ug/l	0.00
72) 1,4-Dichlorobenzene-d4	13.770	152	178080	50.000	ug/l	0.00
System Monitoring Compounds						
33) 1,2-Dichloroethane-d4	8.565	65	197226	52.249	ug/l	0.00
Spiked Amount	50.000	Range	74 - 125	Recovery	=	104.500%
35) Dibromofluoromethane	8.153	113	144402	48.088	ug/l	0.00
Spiked Amount	50.000	Range	75 - 124	Recovery	=	96.180%
50) Toluene-d8	10.547	98	549493	48.890	ug/l	0.00
Spiked Amount	50.000	Range	86 - 113	Recovery	=	97.780%
62) 4-Bromofluorobenzene	12.829	95	187900	47.010	ug/l	0.00
Spiked Amount	50.000	Range	77 - 121	Recovery	=	94.020%
Target Compounds						
						Qvalue
16) Acetone	4.418	43	18537	9.021	ug/l #	77
25) 2-Butanone	7.483	43	11382	4.210	ug/l	98
73) Isopropylbenzene	12.676	105	24619	1.711	ug/l	100
78) n-propylbenzene	13.017	91	46142	2.603	ug/l	96
-----						

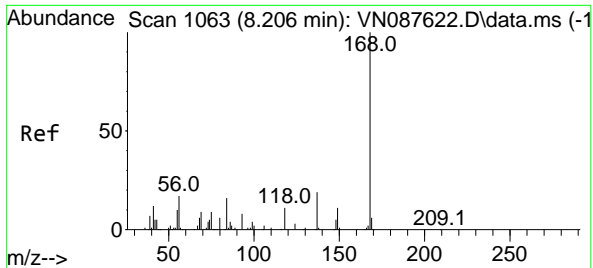
(#) = qualifier out of range (m) = manual integration (+) = signals summed

Data Path : Z:\voasrv\HPCHEM1\MSVOA\_N\Data\VN082525\  
 Data File : VN087658.D  
 Acq On : 25 Aug 2025 15:22  
 Operator : JC\MD  
 Sample : Q2920-01  
 Misc : 5.0mL/MSVOA\_N/WATER  
 ALS Vial : 13 Sample Multiplier: 1

Instrument :  
 MSVOA\_N  
 ClientSampleId :  
 MW1

Quant Time: Aug 26 01:36:41 2025  
 Quant Method : Z:\voasrv\HPCHEM1\MSVOA\_N\methods\82N082125W.M  
 Quant Title : SW846 8260  
 QLast Update : Fri Aug 22 02:55:42 2025  
 Response via : Initial Calibration

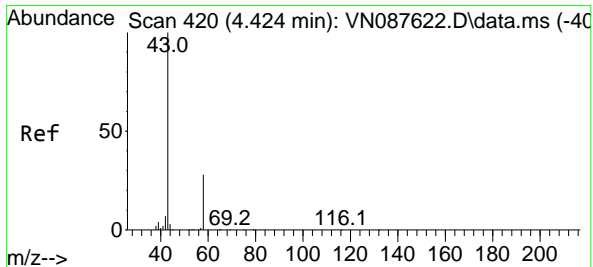
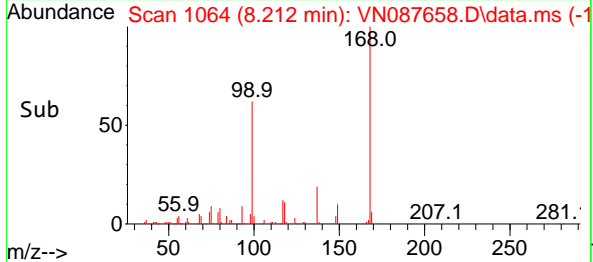
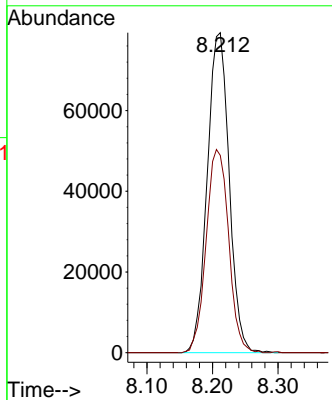
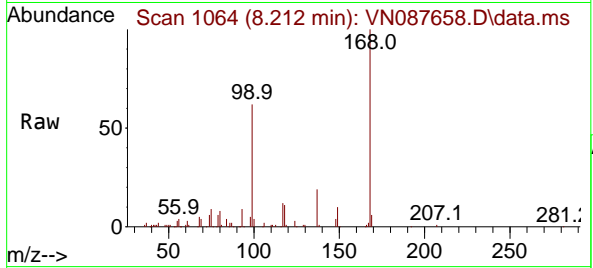




#1  
 Pentafluorobenzene  
 Concen: 50.000 ug/l  
 RT: 8.212 min Scan# 1064  
 Delta R.T. 0.006 min  
 Lab File: VN087658.D  
 Acq: 25 Aug 2025 15:22

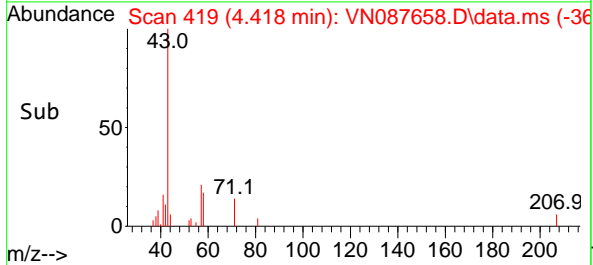
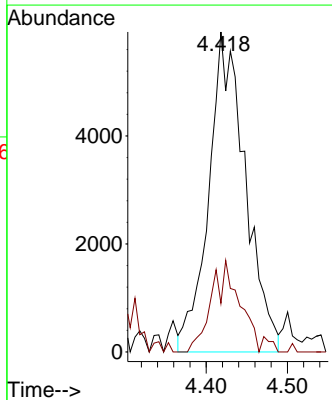
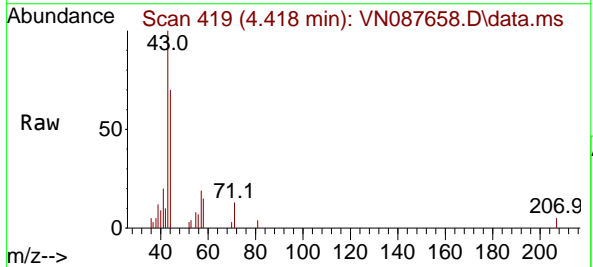
Instrument : MSVOA\_N  
 ClientSampleId : MW1

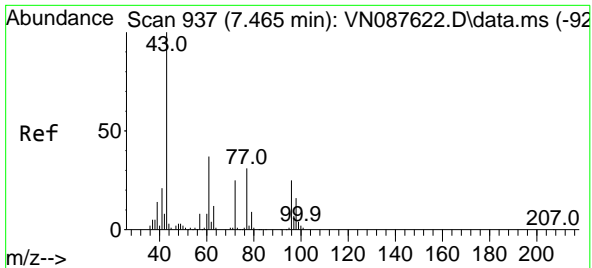
Tgt Ion:168 Resp: 184233  
 Ion Ratio Lower Upper  
 168 100  
 99 61.7 57.2 85.8



#16  
 Acetone  
 Concen: 9.021 ug/l  
 RT: 4.418 min Scan# 419  
 Delta R.T. -0.006 min  
 Lab File: VN087658.D  
 Acq: 25 Aug 2025 15:22

Tgt Ion: 43 Resp: 18537  
 Ion Ratio Lower Upper  
 43 100  
 58 16.0 22.6 33.8#

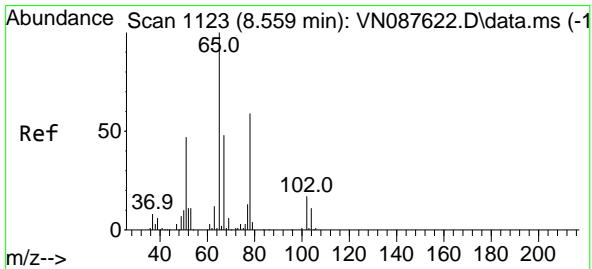
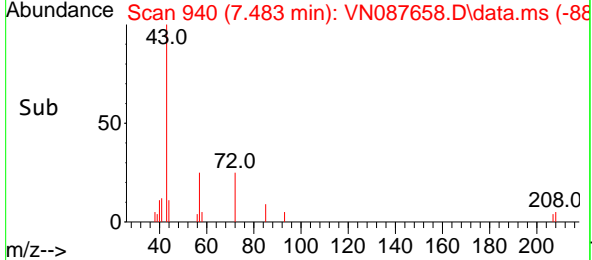
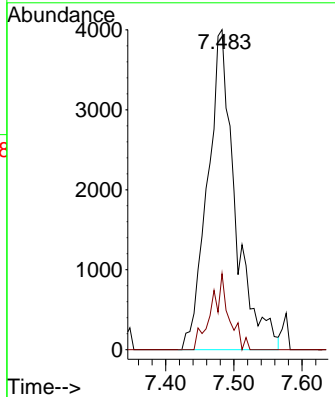
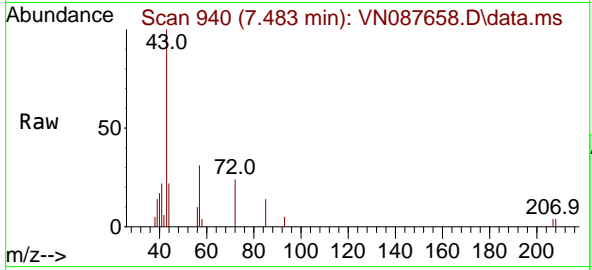




#25  
 2-Butanone  
 Concen: 4.210 ug/l  
 RT: 7.483 min Scan# 940  
 Delta R.T. 0.017 min  
 Lab File: VN087658.D  
 Acq: 25 Aug 2025 15:22

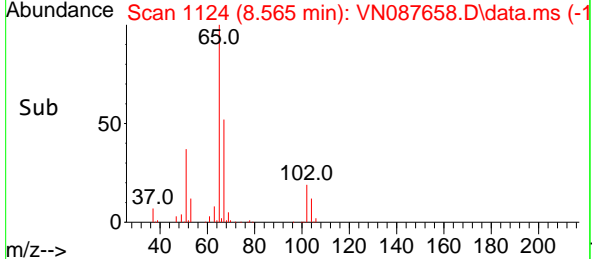
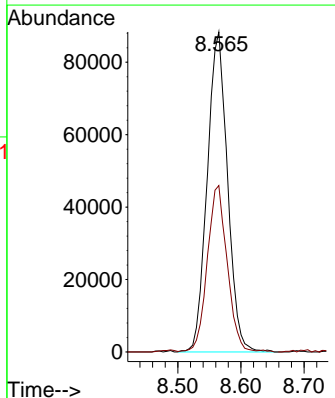
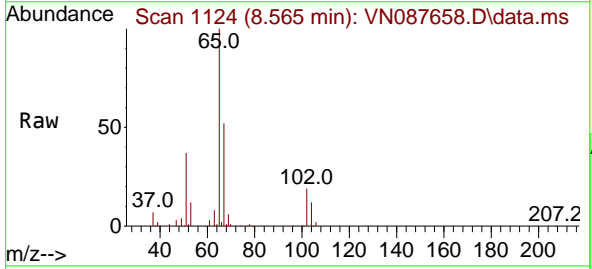
Instrument : MSVOA\_N  
 ClientSampleId : MW1

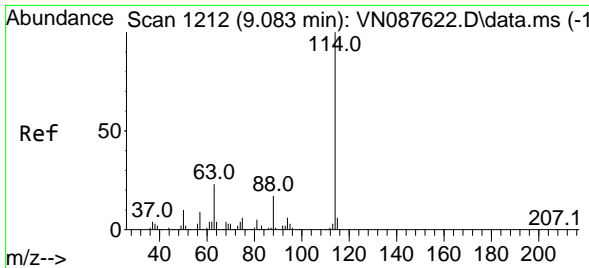
Tgt Ion: 43 Resp: 11382  
 Ion Ratio Lower Upper  
 43 100  
 72 23.8 19.9 29.9



#33  
 1,2-Dichloroethane-d4  
 Concen: 52.249 ug/l  
 RT: 8.565 min Scan# 1124  
 Delta R.T. 0.006 min  
 Lab File: VN087658.D  
 Acq: 25 Aug 2025 15:22

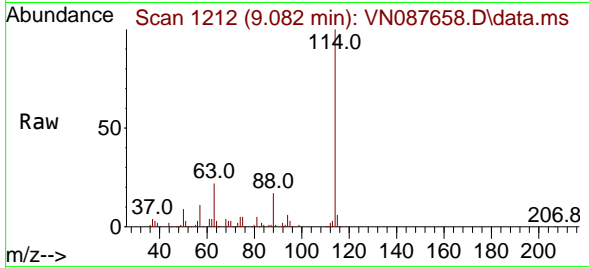
Tgt Ion: 65 Resp: 197226  
 Ion Ratio Lower Upper  
 65 100  
 67 50.3 0.0 100.0



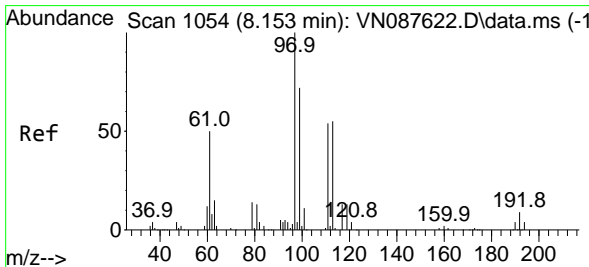
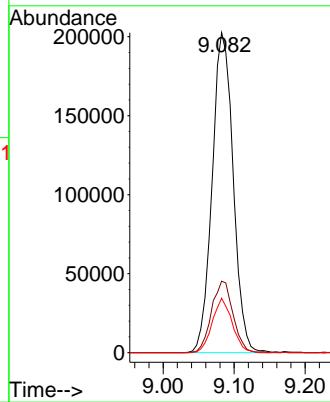
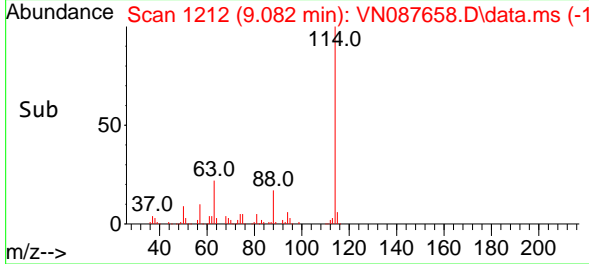


#34  
 1,4-Difluorobenzene  
 Concen: 50.000 ug/l  
 RT: 9.082 min Scan# 11  
 Delta R.T. -0.000 min  
 Lab File: VN087658.D  
 Acq: 25 Aug 2025 15:22

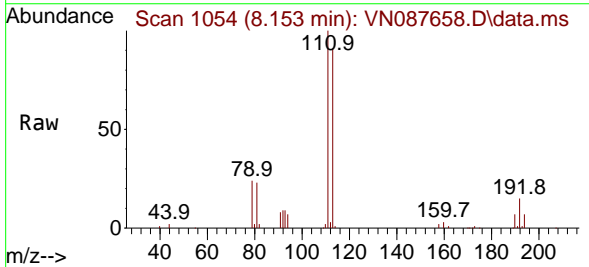
Instrument :  
 MSVOA\_N  
 ClientSampleId :  
 MW1



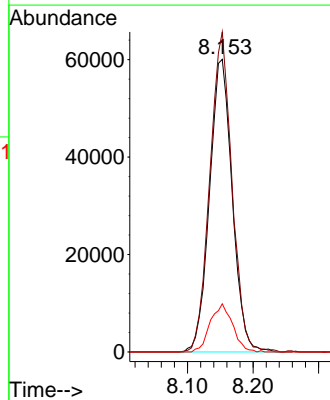
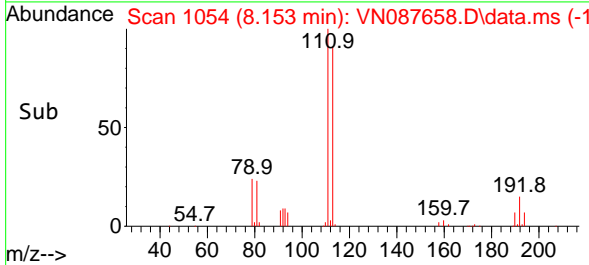
Tgt Ion:114 Resp: 415914  
 Ion Ratio Lower Upper  
 114 100  
 63 22.3 0.0 45.2  
 88 17.0 0.0 33.4

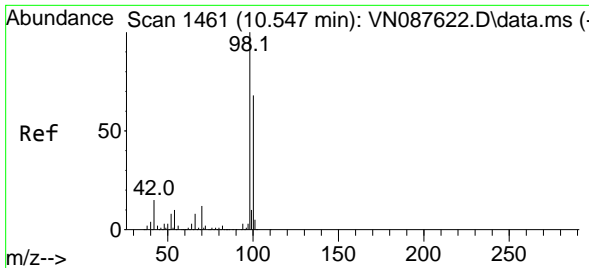


#35  
 Dibromofluoromethane  
 Concen: 48.088 ug/l  
 RT: 8.153 min Scan# 1054  
 Delta R.T. -0.000 min  
 Lab File: VN087658.D  
 Acq: 25 Aug 2025 15:22



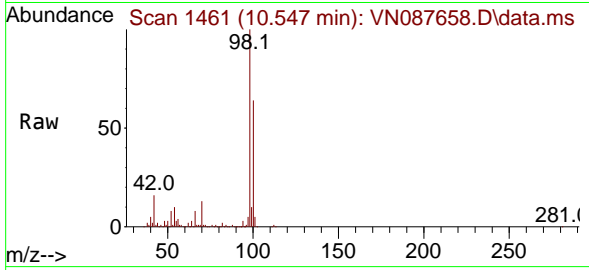
Tgt Ion:113 Resp: 144402  
 Ion Ratio Lower Upper  
 113 100  
 111 106.6 82.8 124.2  
 192 16.3 12.8 19.2



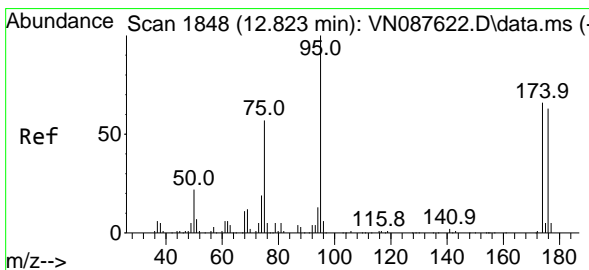
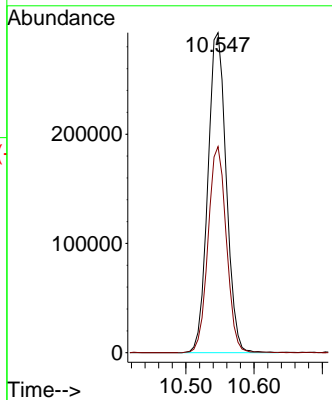
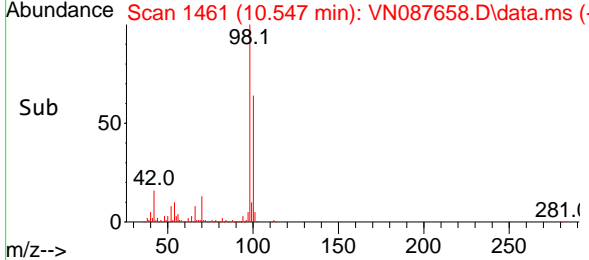


#50  
 Toluene-d8  
 Concen: 48.890 ug/l  
 RT: 10.547 min Scan# 1461  
 Delta R.T. -0.000 min  
 Lab File: VN087658.D  
 Acq: 25 Aug 2025 15:22

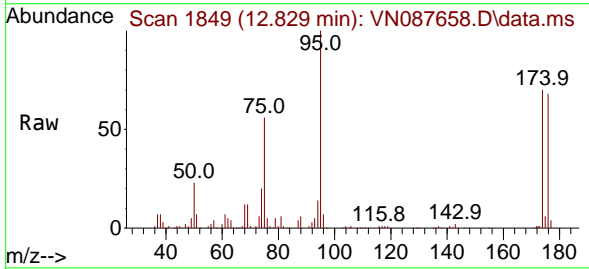
Instrument : MSVOA\_N  
 ClientSampleId : MW1



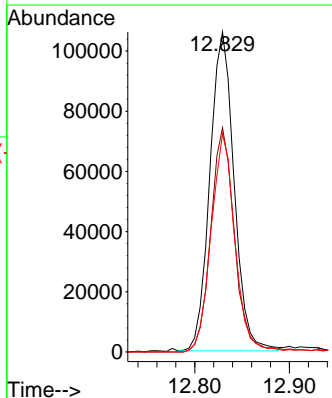
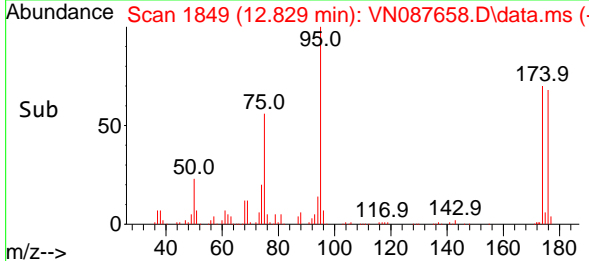
Tgt Ion: 98 Resp: 549493  
 Ion Ratio Lower Upper  
 98 100  
 100 64.0 52.8 79.2

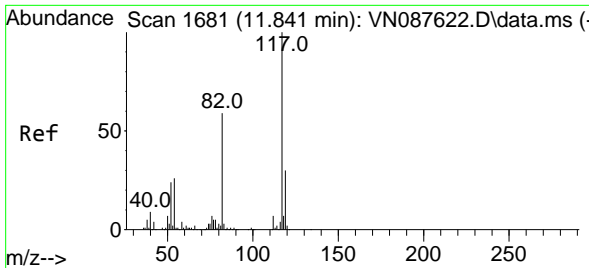


#62  
 4-Bromofluorobenzene  
 Concen: 47.010 ug/l  
 RT: 12.829 min Scan# 1849  
 Delta R.T. 0.006 min  
 Lab File: VN087658.D  
 Acq: 25 Aug 2025 15:22



Tgt Ion: 95 Resp: 187900  
 Ion Ratio Lower Upper  
 95 100  
 174 69.5 0.0 138.4  
 176 67.7 0.0 132.6



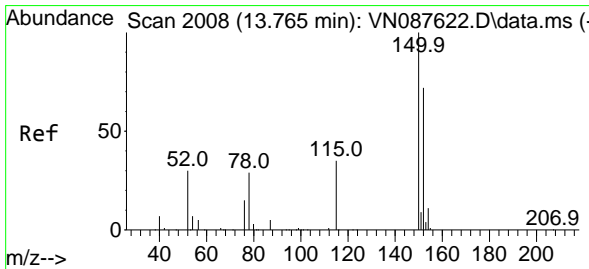
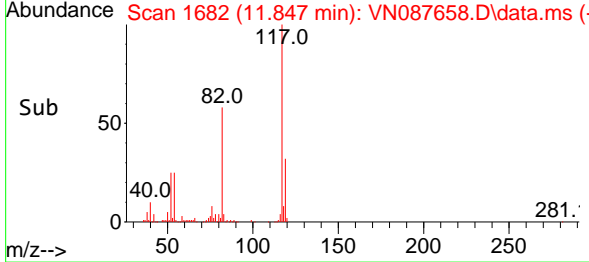
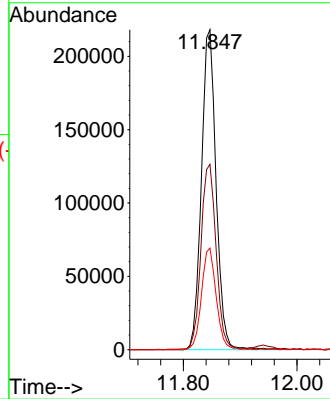
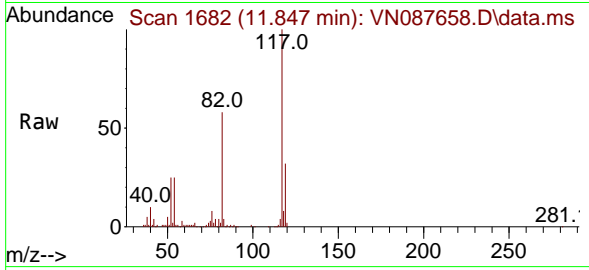


#63  
 Chlorobenzene-d5  
 Concen: 50.000 ug/l  
 RT: 11.847 min Scan# 1  
 Delta R.T. 0.006 min  
 Lab File: VN087658.D  
 Acq: 25 Aug 2025 15:22

Instrument :  
 MSVOA\_N  
 ClientSampleId :  
 MW1

Tgt Ion:117 Resp: 391372

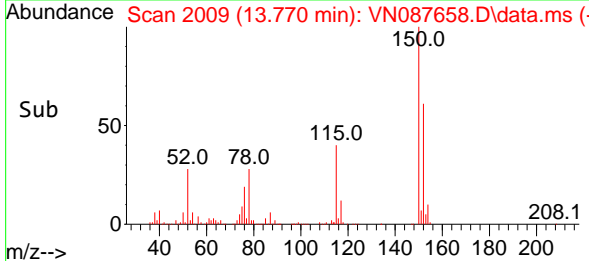
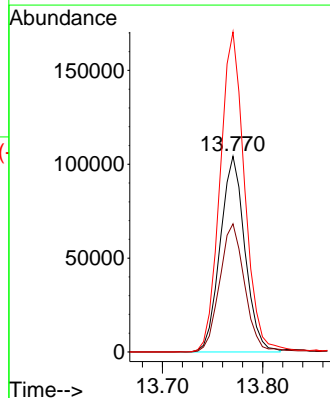
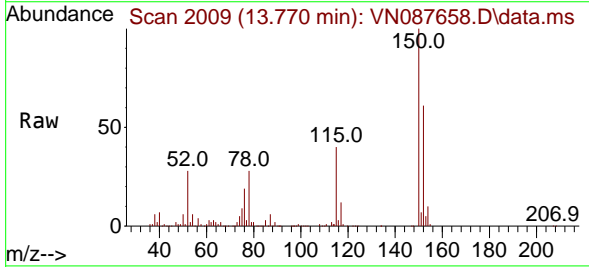
Ion	Ratio	Lower	Upper
117	100		
82	57.7	47.4	71.2
119	31.8	24.3	36.5

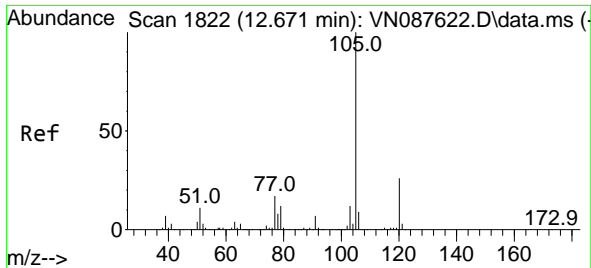


#72  
 1,4-Dichlorobenzene-d4  
 Concen: 50.000 ug/l  
 RT: 13.770 min Scan# 2009  
 Delta R.T. 0.006 min  
 Lab File: VN087658.D  
 Acq: 25 Aug 2025 15:22

Tgt Ion:152 Resp: 178080

Ion	Ratio	Lower	Upper
152	100		
115	66.8	32.3	96.8
150	163.8	0.0	351.0

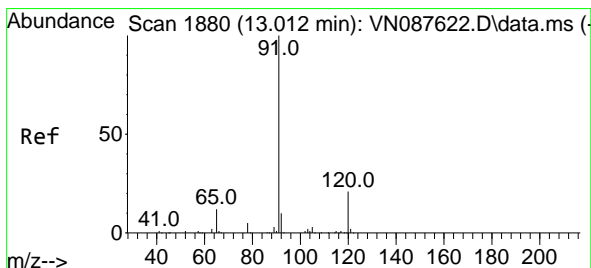
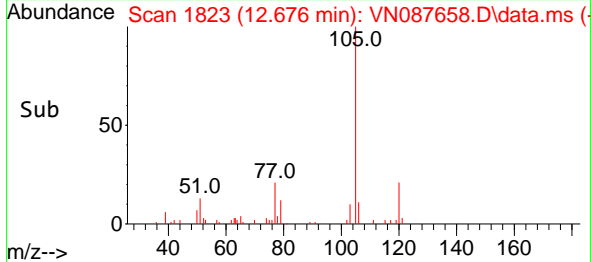
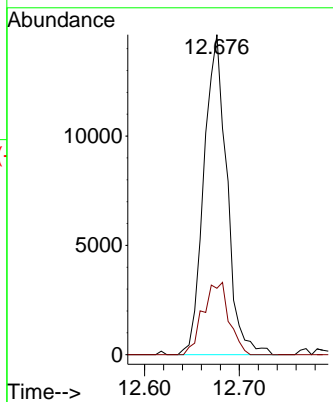
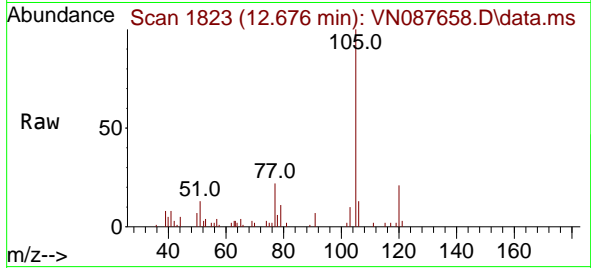




#73  
 Isopropylbenzene  
 Concen: 1.711 ug/l  
 RT: 12.676 min Scan# 1823  
 Delta R.T. 0.006 min  
 Lab File: VN087658.D  
 Acq: 25 Aug 2025 15:22

Instrument : MSVOA\_N  
 ClientSampleId : MW1

Tgt Ion:105 Resp: 24619  
 Ion Ratio Lower Upper  
 105 100  
 120 25.6 12.8 38.3



#78  
 n-propylbenzene  
 Concen: 2.603 ug/l  
 RT: 13.017 min Scan# 1881  
 Delta R.T. 0.006 min  
 Lab File: VN087658.D  
 Acq: 25 Aug 2025 15:22

Tgt Ion: 91 Resp: 46142  
 Ion Ratio Lower Upper  
 91 100  
 120 23.2 10.7 32.1

