

Data Path : Z:\voasrv\HPCHEM1\MSVOA_V\DATA\VV082125\
 Data File : VV038984.D
 Acq On : 21 Aug 2025 16:34
 Operator : SY/MD
 Sample : VV0821WBL01
 Misc : 5.0mL/MSVOA_V/WATER
 ALS Vial : 13 Sample Multiplier: 1

Instrument :
 MSVOA_V
 ClientSampleId :
 VV0821WBL01

Integration Parameters: RTEINT.P

Integrator: RTE
 Smoothing : ON Filtering: 5
 Sampling : 1 Min Area: 3 % of largest Peak
 Start Thrs: 0.2 Max Peaks: 100
 Stop Thrs : 0 Peak Location: TOP

If leading or trailing edge < 100 prefer < Baseline drop else tangent >
 Peak separation: 5

Method : Z:\voasrv\HPCHEM1\MSVOA_V\Method\82V082125W.M
 Title : SW846 8260

Signal : TIC: VV038984.D\data.ms

peak #	R.T. min	first scan	max scan	last scan	PK TY	peak height	corr. area	corr. % max.	% of total
1	1.433	111	122	129	rBV	15392	27436	1.11%	0.206%
2	4.503	1064	1077	1095	rBV2	337000	882417	35.82%	6.619%
3	4.600	1095	1107	1147	rVB	562015	1506731	61.16%	11.302%
4	4.940	1202	1213	1254	rBV	350818	876153	35.57%	6.572%
5	5.532	1386	1397	1441	rBV	833504	1906743	77.40%	14.303%
6	7.236	1913	1927	1965	rBV	1340454	2463489	100.00%	18.479%
7	8.776	2391	2406	2435	rBV	1245013	2121384	86.11%	15.913%
8	10.001	2774	2787	2823	rBV	1033633	1703750	69.16%	12.780%
9	11.175	3140	3152	3185	rBV	1144365	1843419	74.83%	13.828%

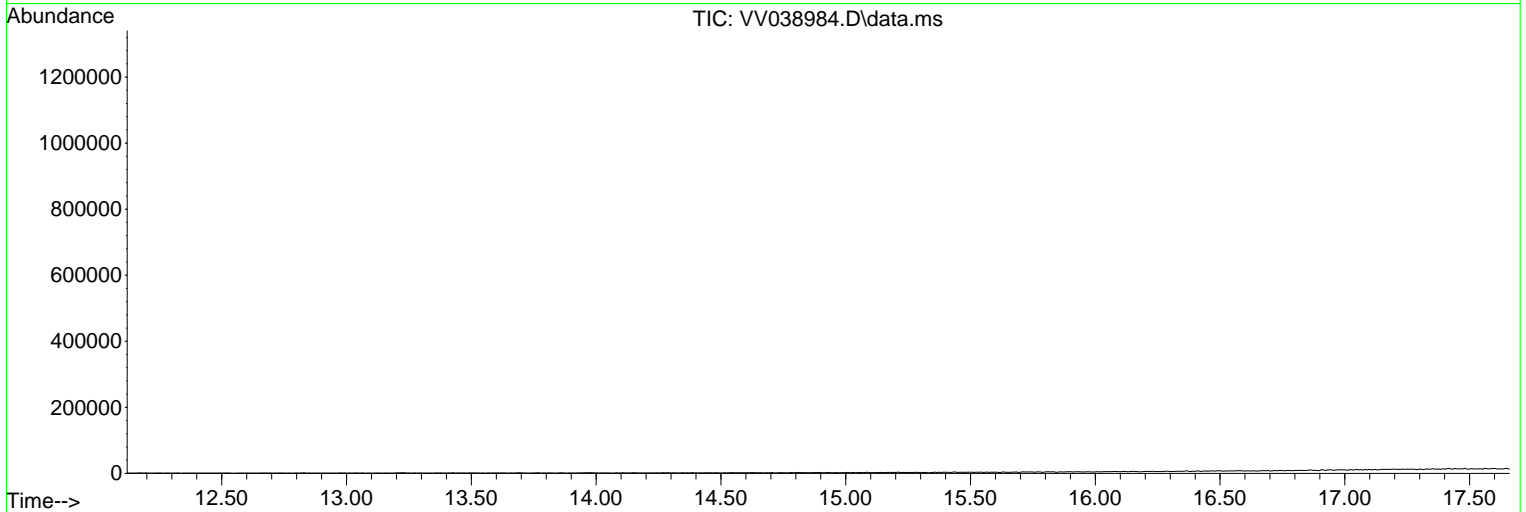
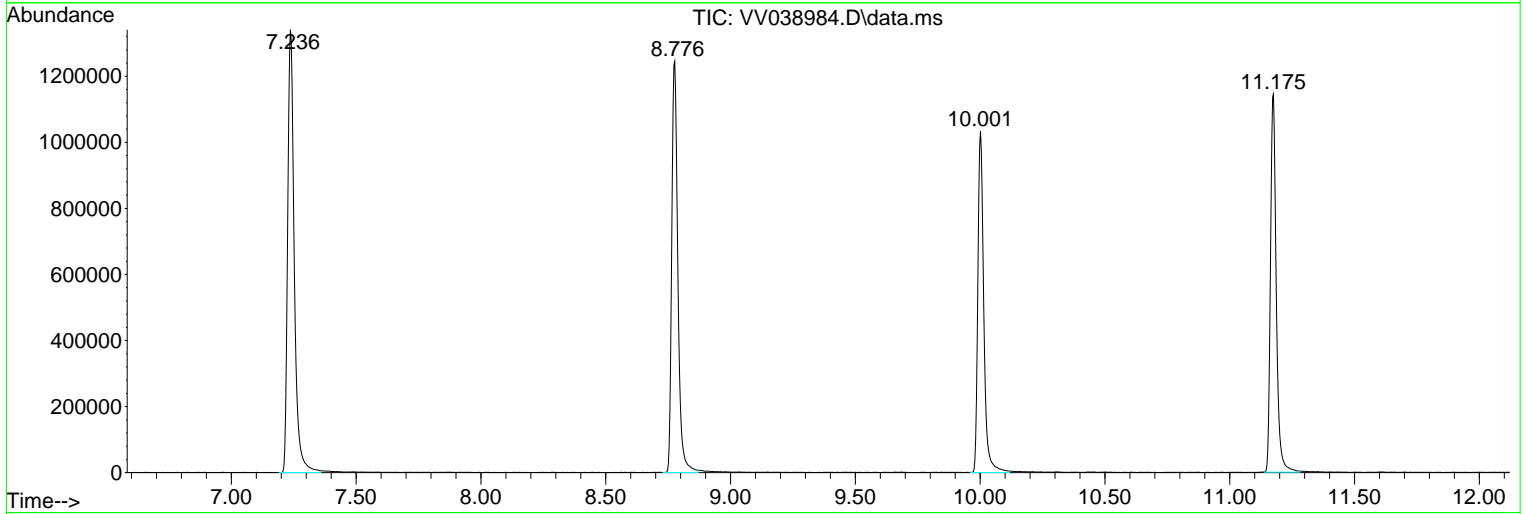
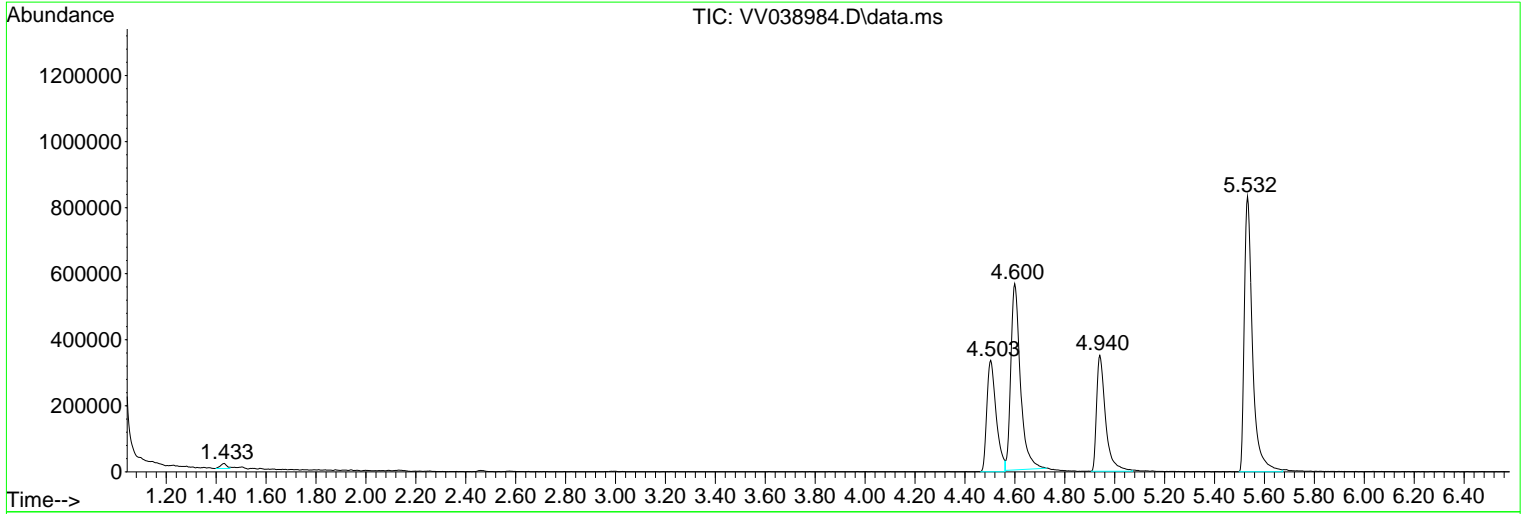
Sum of corrected areas: 13331522

Data Path : Z:\voasrv\HPCHEM1\MSVOA_V\DATA\VV082125\
 Data File : VV038984.D
 Acq On : 21 Aug 2025 16:34
 Operator : SY/MD
 Sample : VV0821WBL01
 Misc : 5.0mL/MSVOA_V/WATER
 ALS Vial : 13 Sample Multiplier: 1

Instrument :
 MSVOA_V
 ClientSampleId :
 VV0821WBL01

Quant Method : Z:\voasrv\HPCHEM1\MSVOA_V\Method\82V082125W.M
 Quant Title : SW846 8260

TIC Library : C:\Database\NIST20.L
 TIC Integration Parameters: LSCINT.P



Library Search Compound Report

Data Path : Z:\voasrv\HPCHEM1\MSVOA_V\DATA\VV082125\
Data File : VV038984.D
Acq On : 21 Aug 2025 16:34
Operator : SY/MD
Sample : VV0821WBL01
Misc : 5.0mL/MSVOA_V/WATER
ALS Vial : 13 Sample Multiplier: 1

Instrument :
MSVOA_V
ClientSampleId :
VV0821WBL01

Quant Method : Z:\voasrv\HPCHEM1\MSVOA_V\Method\82V082125W.M
Quant Title : SW846 8260

TIC Library : C:\Database\NIST20.L
TIC Integration Parameters: LSCINT.P

No Library Search Compounds Detected

Data Path : Z:\voasrv\HPCHEM1\MSVOA_V\DATA\VV082125\
Data File : VV038984.D
Acq On : 21 Aug 2025 16:34
Operator : SY/MD
Sample : VV0821WBL01
Misc : 5.0mL/MSVOA_V/WATER
ALS Vial : 13 Sample Multiplier: 1

Instrument :
MSVOA_V
ClientSampleId :
VV0821WBL01

Quant Method : Z:\voasrv\HPCHEM1\MSVOA_V\Method\82V082125W.M
Quant Title : SW846 8260

TIC Library : C:\Database\NIST20.L
TIC Integration Parameters: LSCINT.P

TIC Top Hit name	RT	EstConc	Units	Response	--Internal Standard--		
					#	RT	Resp Conc
