

Data Path : Z:\pestpcbsrv\HPCHEM1\ECD_0\Data\P0090425\
 Data File : P0113483.D
 Signal(s) : Signal #1: ECD1A.ch Signal #2: ECD2B.ch
 Acq On : 04 Sep 2025 20:56
 Operator : YP/AJ
 Sample : PB169547BL
 Misc :
 ALS Vial : 17 Sample Multiplier: 1

Instrument :
 ECD_0
ClientSampleId :
 PB169547BL

Integration File signal 1: autoint1.e
 Integration File signal 2: autoint2.e
 Quant Time: Sep 05 01:35:34 2025
 Quant Method : Z:\pestpcbsrv\HPCHEM1\ECD_0\methods\P0081825.M
 Quant Title : GC EXTRACTABLES
 QLast Update : Tue Aug 19 06:08:32 2025
 Response via : Initial Calibration
 Integrator: ChemStation

Volume Inj. : 2 µl
 Signal #1 Phase : ZB-MR1 Signal #2 Phase: ZB-MR2
 Signal #1 Info : 30Mx0.32mmx 0.50µ Signal #2 Info : 30M x 0.32mm x 0.25µm

Compound	RT#1	RT#2	Resp#1	Resp#2	ng/ml	ng/ml

System Monitoring Compounds						
1) SA Tetrachlo...	3.658	3.651	167.1E6	98633168	20.407	19.490
2) SA Decachlor...	8.673	8.620	131.1E6	38941846	18.915	20.551

Target Compounds

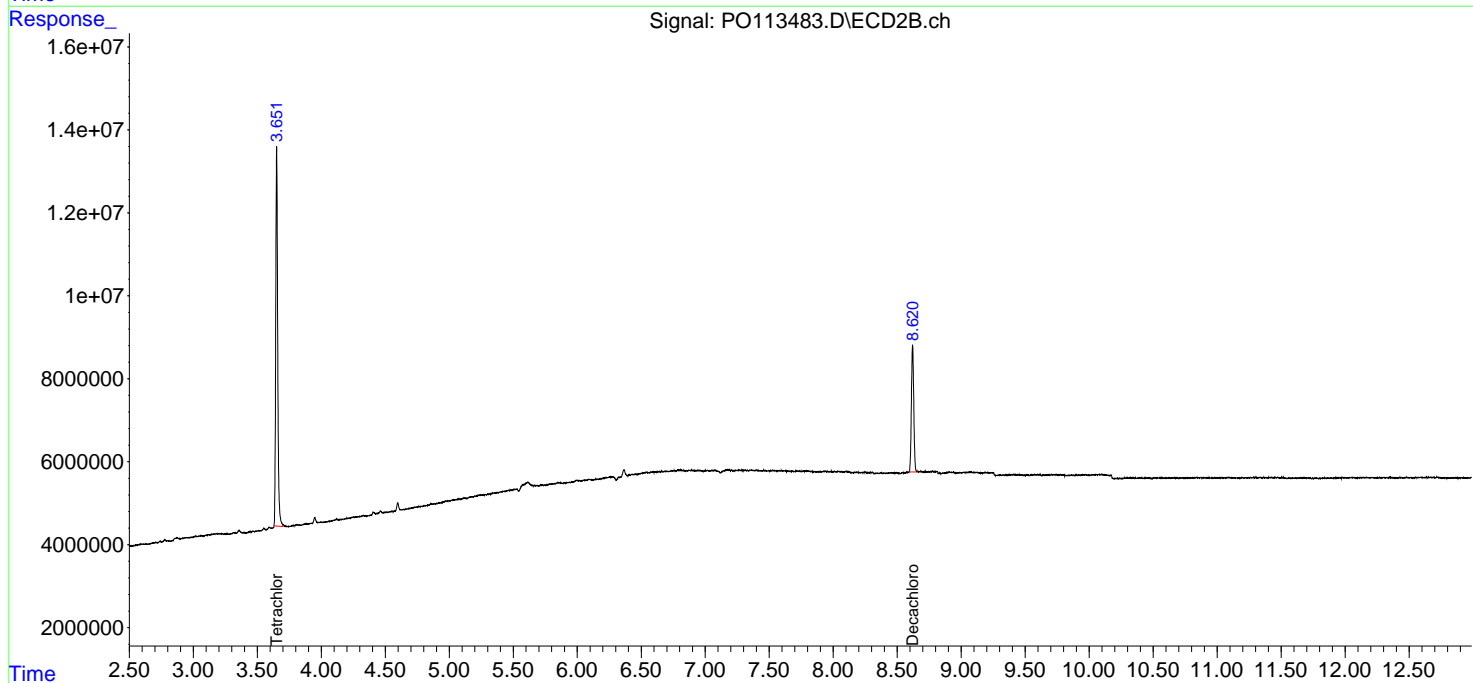
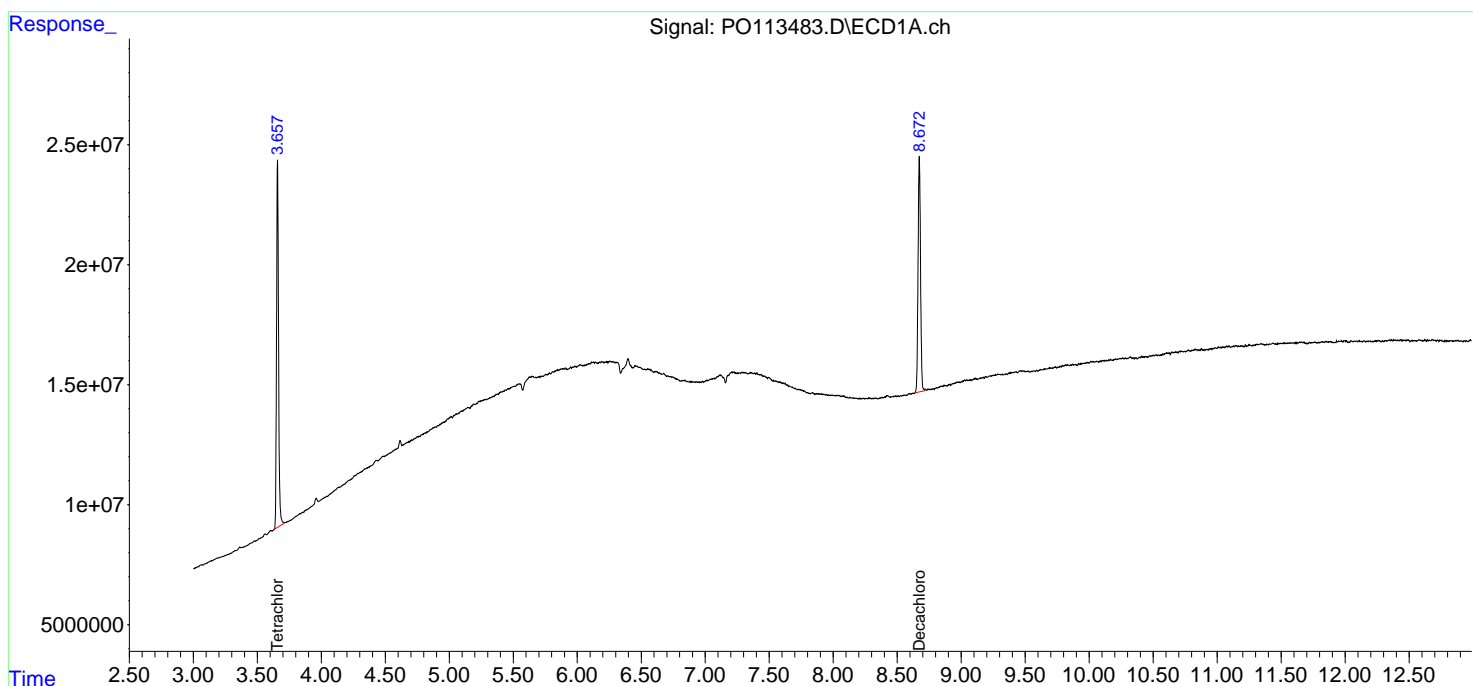
(f)=RT Delta > 1/2 Window (#)=Amounts differ by > 25% (m)=manual int.

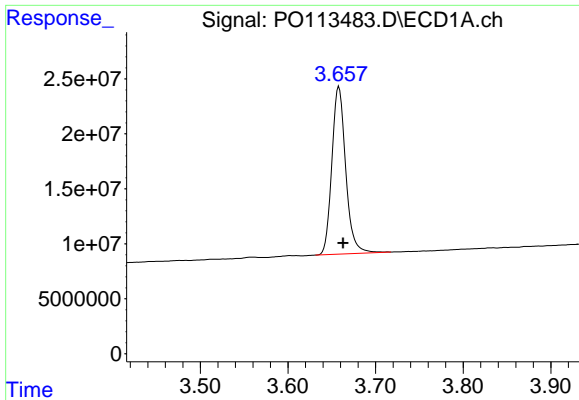
Data Path : Z:\pestpcbsrv\HPCHEM1\ECD_0\Data\P0090425\
 Data File : P0113483.D
 Signal(s) : Signal #1: ECD1A.ch Signal #2: ECD2B.ch
 Acq On : 04 Sep 2025 20:56
 Operator : YP/AJ
 Sample : PB169547BL
 Misc :
 ALS Vial : 17 Sample Multiplier: 1

Instrument :
 ECD_0
ClientSampleId :
 PB169547BL

Integration File signal 1: autoint1.e
 Integration File signal 2: autoint2.e
 Quant Time: Sep 05 01:35:34 2025
 Quant Method : Z:\pestpcbsrv\HPCHEM1\ECD_0\methods\P0081825.M
 Quant Title : GC EXTRACTABLES
 QLast Update : Tue Aug 19 06:08:32 2025
 Response via : Initial Calibration
 Integrator: ChemStation

Volume Inj. : 2 µl
 Signal #1 Phase : ZB-MR1 Signal #2 Phase: ZB-MR2
 Signal #1 Info : 30Mx0.32mmx 0.50µ Signal #2 Info : 30M x 0.32mm x 0.25µm

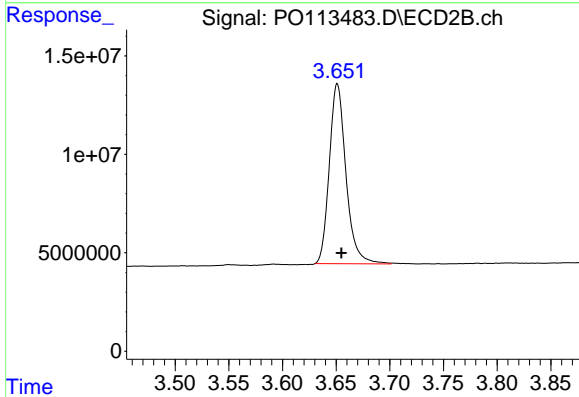




#1 Tetrachloro-m-xylene

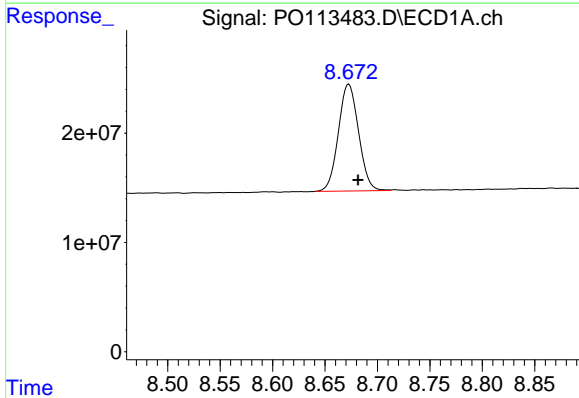
R.T.: 3.658 min
 Delta R.T.: -0.005 min
 Response: 167064916
 Conc: 20.41 ng/ml

Instrument :
 ECD_O
 ClientSampleId :
 PB169547BL



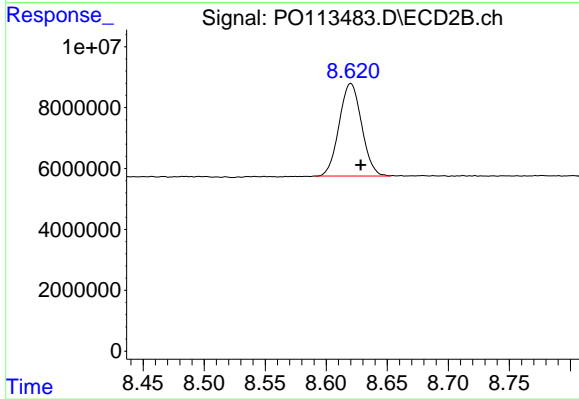
#1 Tetrachloro-m-xylene

R.T.: 3.651 min
 Delta R.T.: -0.004 min
 Response: 98633168
 Conc: 19.49 ng/ml



#2 Decachlorobiphenyl

R.T.: 8.673 min
 Delta R.T.: -0.009 min
 Response: 131109074
 Conc: 18.92 ng/ml



#2 Decachlorobiphenyl

R.T.: 8.620 min
 Delta R.T.: -0.008 min
 Response: 38941846
 Conc: 20.55 ng/ml