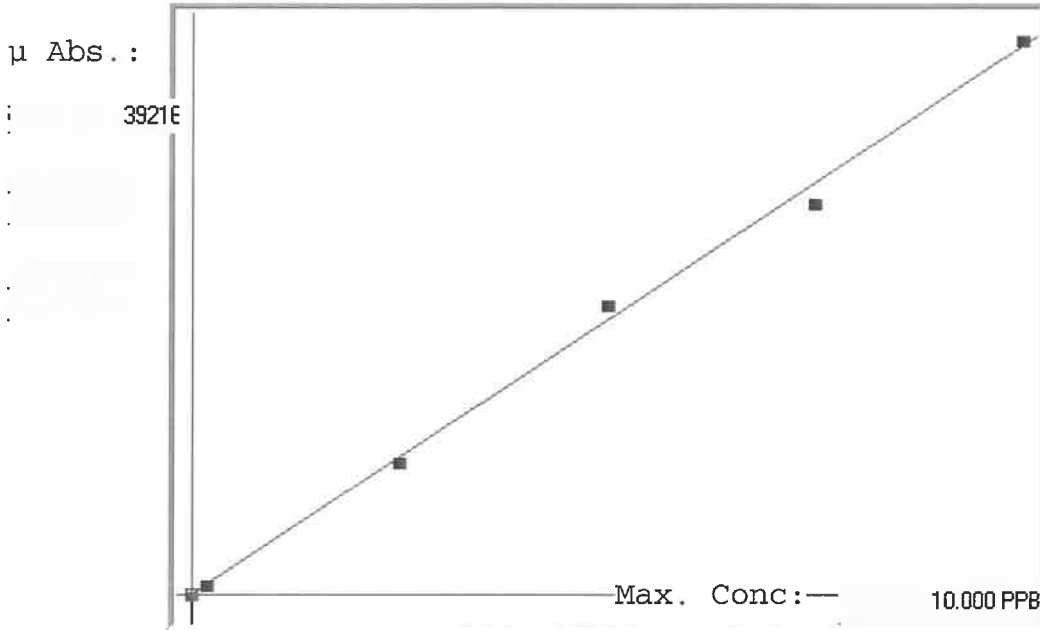


LB137412

7470A

INSTRUMENT ID: CV1

Linear



A= 0.0000e+000

B= 2.5777e-004

C= -2.3498e-003

Rho= 0.9986439

Accept=Accepted

| Std ID | Conc. | Calc. | Dev. | Mean | SD or %RSD | Rep 1 | Rep 2 | Rep 3 | Rep 4 | Rep 5 | 0/0 D |
|--------|--------|--------|--------|-------|------------|-------|-------|-------|-------|-------|-------|
| 0.0 | 0.000 | 0.010 | 0.010 | 48 | 0.000 | 48 | 0 | | | | - |
| 0.2 | 0.200 | 0.199 | -0.001 | 783 | 0.0 % | 783 | 0 | | | | -1 |
| 2.5 | 2.500 | 2.436 | -0.064 | 9461 | 0.0 % | 9461 | 0 | | | | -2 |
| 5.0 | 5.000 | 5.294 | 0.294 | 20545 | 0.0 % | 20545 | | | | | -6 |
| 7.5 | 7.500 | 7.154 | -0.346 | 27762 | 0.0 % | 27762 | | | | | -5 |
| 10.0 | 10.000 | 10.106 | 0.106 | 39216 | 0.0 % | 39216 | | | | | 1 |

LB137412 INSTRUMENT ID : CV1

Method: 7470A Operator: Admin Date of Analysis: 03 Oct 2025 10:56:23

| Type | Sample ID | Extended ID | Conc. | µ Abs. | Units | Type | Std | ConclMethod | Date |
|------|------------------|-----------------|---------|--------|-------|------|---------|-------------|----------------------|
| S | 0.0 - 1 | SO | - | 48 | PPB | Std | 0.0000 | 7470A | 03 Oct 2025 10:56:56 |
| S | 0.2 - 1 | SO-2 | - | 783 | PPB | Std | 0.2000 | 7470A | 03 Oct 2025 10:59:14 |
| S | 2.5 - 1 | SO-5 | - | 9461 | PPB | Std | 2.5000 | 7470A | 03 Oct 2025 11:01:31 |
| S | 5.0 - 1 | SO | - | 20545 | PPB | Std | 5.0000 | 7470A | 03 Oct 2025 11:03:48 |
| S | 7.5 - 1 | SO-5 | - | 27762 | PPB | Std | 7.5000 | 7470A | 03 Oct 2025 11:06:07 |
| S | 10.0 - 1 | SO | - | 39216 | PPB | Std | 10.0000 | 7470A | 03 Oct 2025 11:08:26 |
| U | ICV58 - 1 | ICV58 | 4.1050 | 15934 | PPB | SMPL | - | 7470A | 03 Oct 2025 11:12:03 |
| U | ICB58 - 1 | ICB58 | -0.0526 | -195 | PPB | SMPL | - | 7470A | 03 Oct 2025 11:14:18 |
| U | CCV80 - 1 | CCV80 | 5.2593 | 20412 | PPB | SMPL | - | 7470A | 03 Oct 2025 11:16:36 |
| U | CCB80 - 1 | CCB80 | -0.0864 | -326 | PPB | SMPL | - | 7470A | 03 Oct 2025 11:18:50 |
| U | CRA - 1 | CRA | 0.1809 | 711 | PPB | SMPL | - | 7470A | 03 Oct 2025 11:21:09 |
| U | HighStd - 1 | HighStd | 10.0694 | 39072 | PPB | SMPL | - | 7470A | 03 Oct 2025 11:23:24 |
| U | ChkStd - 1 | ChkStd | 6.6722 | 25893 | PPB | SMPL | - | 7470A | 03 Oct 2025 11:32:07 |
| U | PB169961BL - 1 | PBW | -0.0681 | -255 | PPB | SMPL | - | 7470A | 03 Oct 2025 11:34:22 |
| U | PB169961BS - 1 | LCSW | 4.1014 | 15920 | PPB | SMPL | - | 7470A | 03 Oct 2025 11:36:46 |
| U | Q3018-07 - 1 | WP0925-PT-HG-WP | 23.4826 | 91107 | PPB | SMPL | - | 7470A | 03 Oct 2025 11:39:02 |
| U | Q3241-02 - 1 | 92225 | -0.0637 | -238 | PPB | SMPL | - | 7470A | 03 Oct 2025 11:41:21 |
| U | Q3252-05 - 1 | AUD-25-0161 | -0.0614 | -229 | PPB | SMPL | - | 7470A | 03 Oct 2025 11:43:57 |
| U | Q3252-05DUP - 1 | AUD-25-0161DUP | -0.0042 | -7 | PPB | SMPL | - | 7470A | 03 Oct 2025 11:46:14 |
| U | Q3252-05MS - 1 | AUD-25-0161MS | 3.6588 | 14203 | PPB | SMPL | - | 7470A | 03 Oct 2025 11:48:30 |
| U | CCV81 - 1 | CCV81 | 5.2271 | 20287 | PPB | SMPL | - | 7470A | 03 Oct 2025 11:50:45 |
| U | CCB81 - 1 | CCB81 | -0.0774 | -291 | PPB | SMPL | - | 7470A | 03 Oct 2025 11:53:03 |
| U | Q3252-05MSD - 1 | AUD-25-0161MSD | 3.8459 | 14929 | PPB | SMPL | - | 7470A | 03 Oct 2025 11:55:22 |
| U | Q3258-06 - 1 | COMPOSITE | 2.8548 | 11084 | PPB | SMPL | - | 7470A | 03 Oct 2025 11:57:37 |
| U | Q3260-02 - 1 | COMP | 0.0871 | 347 | PPB | SMPL | - | 7470A | 03 Oct 2025 11:59:56 |
| U | Q3263-01 - 1 | 251818 | -0.0874 | -330 | PPB | SMPL | - | 7470A | 03 Oct 2025 12:02:15 |
| U | Q3263-02 - 1 | 266380 | -0.0026 | -1 | PPB | SMPL | - | 7470A | 03 Oct 2025 12:04:32 |
| U | Q3252-05LX5 - 1 | | -0.2050 | -786 | PPB | SMPL | - | 7470A | 03 Oct 2025 12:16:21 |
| U | Q3252-05A - 1 | | 4.0916 | 15882 | PPB | SMPL | - | 7470A | 03 Oct 2025 12:18:51 |
| U | Q3018-07DLX5 - 1 | WP0925-PT-HG-WP | 4.7979 | 18622 | PPB | SMPL | - | 7470A | 03 Oct 2025 12:26:21 |
| U | CCV82 - 1 | CCV82 | 4.5324 | 17592 | PPB | SMPL | - | 7470A | 03 Oct 2025 12:35:31 |
| U | CCB82 - 1 | CCB82 | -0.0214 | -74 | PPB | SMPL | - | 7470A | 03 Oct 2025 12:40:28 |