

LB137106 INSTRUMENT ID : CV1

Method: 7471B

Operator: Admin

Date of Analysis: 08 Sep 2025 13:54:59

Type	Sample ID	Extended ID	Conc.	µ Abs.	Units	Type	Std Conc	Method	Date
S	0.0 - 1	50	-	92	PPB	Std	0.0000	7471B	08 Sep 2025 14:14:03
S	0.2 - 1	50.2	-	1026	PPB	Std	0.2000	7471B	08 Sep 2025 14:16:20
S	2.5 - 1	52.5	-	13323	PPB	Std	2.5000	7471B	08 Sep 2025 14:18:37
S	5.0 - 1	55.0	-	27606	PPB	Std	5.0000	7471B	08 Sep 2025 14:20:54
S	7.5 - 1	57.5	-	39177	PPB	Std	7.5000	7471B	08 Sep 2025 14:23:13
S	10.0 - 1	510.0	-	53382	PPB	Std	10.0000	7471B	08 Sep 2025 14:25:32
U	ICV22 - 1	ICV22	4.1382	22106	PPB	SMPL	-7471B		08 Sep 2025 14:34:00
U	ICB22 - 1	ICB22	-0.0752	-283	PPB	SMPL	-7471B		08 Sep 2025 14:36:17
U	CCV63 - 1	CCV63	5.1209	27328	PPB	SMPL	-7471B		08 Sep 2025 14:38:39
U	CCB63 - 1	CCB63	-0.0240	-11	PPB	SMPL	-7471B		08 Sep 2025 14:43:49
U	CRA - 1	CRA	0.1625	980	PPB	SMPL	-7471B		08 Sep 2025 14:46:04
U	HighStd - 1	HighStd	9.8543	52480	PPB	SMPL	-7471B		08 Sep 2025 14:48:18
U	ChkStd - 1	ChkStd	6.8391	36458	PPB	SMPL	-7471B		08 Sep 2025 14:50:34
U	PB169605BL - 1	PB169605BL	-0.0184	19	PPB	SMPL	-7471B		08 Sep 2025 14:55:59
U	PB169605BS - 1	PB169605BS	3.6019	19256	PPB	SMPL	-7471B		08 Sep 2025 14:58:15
U	Q3009-01 - 1	TR-04-090325	0.0631	452	PPB	SMPL	-7471B		08 Sep 2025 15:00:31
U	Q3009-01DUP - 1	TR-04-090325DUP	0.0571	420	PPB	SMPL	-7471B		08 Sep 2025 15:02:55
U	Q3009-01MS - 1	TR-04-090325MS	3.2063	17154	PPB	SMPL	-7471B		08 Sep 2025 15:05:12
U	Q3009-01MSD - 1	TR-04-090325MSD	3.4014	18191	PPB	SMPL	-7471B		08 Sep 2025 15:07:36
U	Q3021-02 - 1	821-ABC	1.3748	7422	PPB	SMPL	-7471B		08 Sep 2025 15:09:52
U	CCV64 - 1	CCV64	5.0652	27032	PPB	SMPL	-7471B		08 Sep 2025 15:12:17
U	CCB64 - 1	CCB64	-0.0940	-383	PPB	SMPL	-7471B		08 Sep 2025 15:14:34
U	Q3021-04 - 1	821-DEF	1.1358	6152	PPB	SMPL	-7471B		08 Sep 2025 15:16:51
U	Q3021-06 - 1	821-GHI	1.3906	7506	PPB	SMPL	-7471B		08 Sep 2025 15:19:06
U	Q3023-01 - 1	TP-1	1.3524	7303	PPB	SMPL	-7471B		08 Sep 2025 15:21:23
U	Q3023-04 - 1	TP-2	0.2942	1680	PPB	SMPL	-7471B		08 Sep 2025 15:23:41
U	Q3026-01 - 1	EO-02-09042025	0.4828	2682	PPB	SMPL	-7471B		08 Sep 2025 15:25:59
U	Q3027-01 - 1	HD-01-09042025	0.0631	452	PPB	SMPL	-7471B		08 Sep 2025 15:28:15
U	Q3031-01 - 1	PL-01-09052025	0.0759	520	PPB	SMPL	-7471B		08 Sep 2025 15:30:31
U	Q3032-01 - 1	SOIL-PILE-1	0.4591	2556	PPB	SMPL	-7471B		08 Sep 2025 15:32:48
U	Q3032-04 - 1	SOIL-PILE-2	2.3223	12457	PPB	SMPL	-7471B		08 Sep 2025 15:35:05
U	Q3009-01LX5 - 1		-0.0355	-72	PPB	SMPL	-7471B		08 Sep 2025 15:37:21
U	CCV65 - 1	CCV65	4.9839	26600	PPB	SMPL	-7471B		08 Sep 2025 15:39:37
U	CCB65 - 1	CCB65	-0.1448	-653	PPB	SMPL	-7471B		08 Sep 2025 15:41:52
U	Q3009-01A - 1		3.6832	19688	PPB	SMPL	-7471B		08 Sep 2025 15:44:09
U	CCV66 - 1	CCV66	4.7931	25586	PPB	SMPL	-7471B		08 Sep 2025 15:56:16
U	CCB66 - 1	CCB66	-0.0686	-248	PPB	SMPL	-7471B		08 Sep 2025 15:58:31

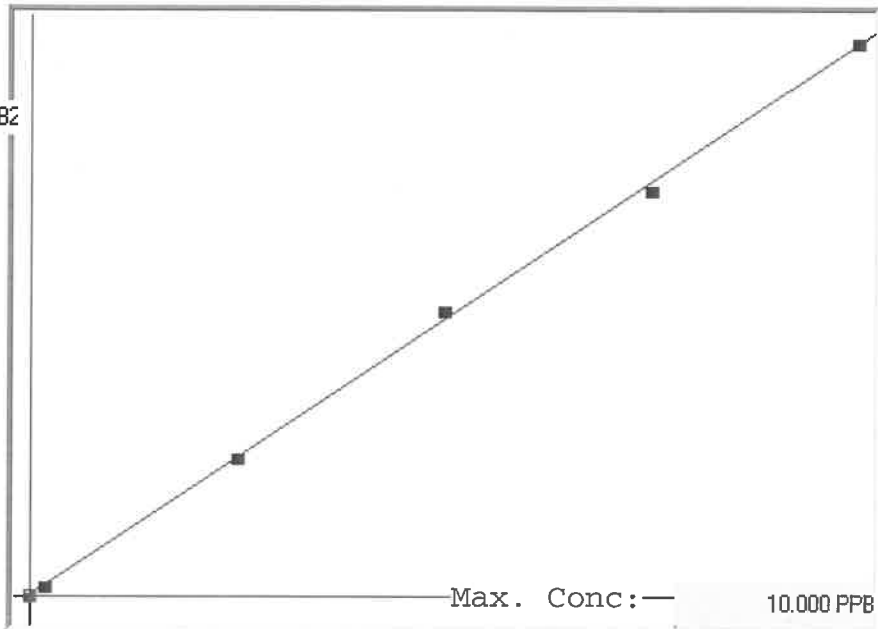
LB137106

7471B

INSTRUMENT ID: CV1

μ Abs.:

53382



Linear

A= 0.0000e+000

B= 1.8819e-004

C= -2.1958e-002

Rho= 0.9996699

Accept=Accepted

Std ID	Conc.	Calc.	Dev.	Mean	SD or %RSD	Rep 1	Rep 2	Rep 3	Rep 4	Rep 5	o/p
0.0	0.000	-0.005	-0.005	92	0.000	92					-
0.2	0.200	0.171	-0.029	1026	0.0 %	1026					15
2.5	2.500	2.485	-0.015	13323	0.0 %	13323					0
5.0	5.000	5.173	0.173	27606	0.0 %	27606					3
7.5	7.500	7.351	-0.149	39177	0.0 %	39177					2
10.0	10.000	10.024	0.024	53382	0.0 %	53382					0