

Data Path : Z:\voasrv\HPCHEM1\MSVOA\_N\Data\VN091725\  
 Data File : VN087882.D  
 Acq On : 17 Sep 2025 16:00  
 Operator : JC\MD  
 Sample : Q3098-01 5X  
 Misc : 5.0mL/MSVOA\_N/WATER  
 ALS Vial : 17 Sample Multiplier: 1

**Instrument :**  
 MSVOA\_N  
**ClientSampleId :**  
 EFF-WW

Quant Time: Sep 18 03:14:00 2025  
 Quant Method : Z:\voasrv\HPCHEM1\MSVOA\_N\methods\624N090425W.M  
 Quant Title : METHOD 624 VOLATILE ORGANIC ANALYSIS  
 QLast Update : Fri Sep 05 03:29:53 2025  
 Response via : Initial Calibration

**Manual Integrations**  
**APPROVED**  
 Reviewed By :John Carlone 09/18/2025  
 Supervised By :Mahesh Dadoda 09/18/2025

Compound	R.T.	QIon	Response	Conc	Units	Dev(Min)
-----						
Internal Standards						
1) Bromochloromethane	7.800	128	49561	30.000	ug/l	0.00
28) 1,4-Difluorobenzene	9.083	114	241644	30.000	ug/l	0.00
57) Chlorobenzene-d5	11.847	117	220656	30.000	ug/l	0.00
System Monitoring Compounds						
27) 1,2-Dichloroethane-d4	8.565	65	120465	28.454	ug/l	0.00
Spiked Amount	30.000	Range 91 - 110	Recovery =	94.833%		
60) 4-Bromofluorobenzene	12.829	95	95529	26.925	ug/l	0.00
Spiked Amount	30.000	Range 63 - 112	Recovery =	89.733%		
63) Toluene-d8	10.547	98	288377	28.102	ug/l	0.00
Spiked Amount	30.000	Range 91 - 112	Recovery =	93.667%		
Target Compounds						
15) Acetone	4.424	58	48828m	78.844	ug/l	Qvalue
25) Chloroform	7.953	83	27935	4.337	ug/l	95
-----						

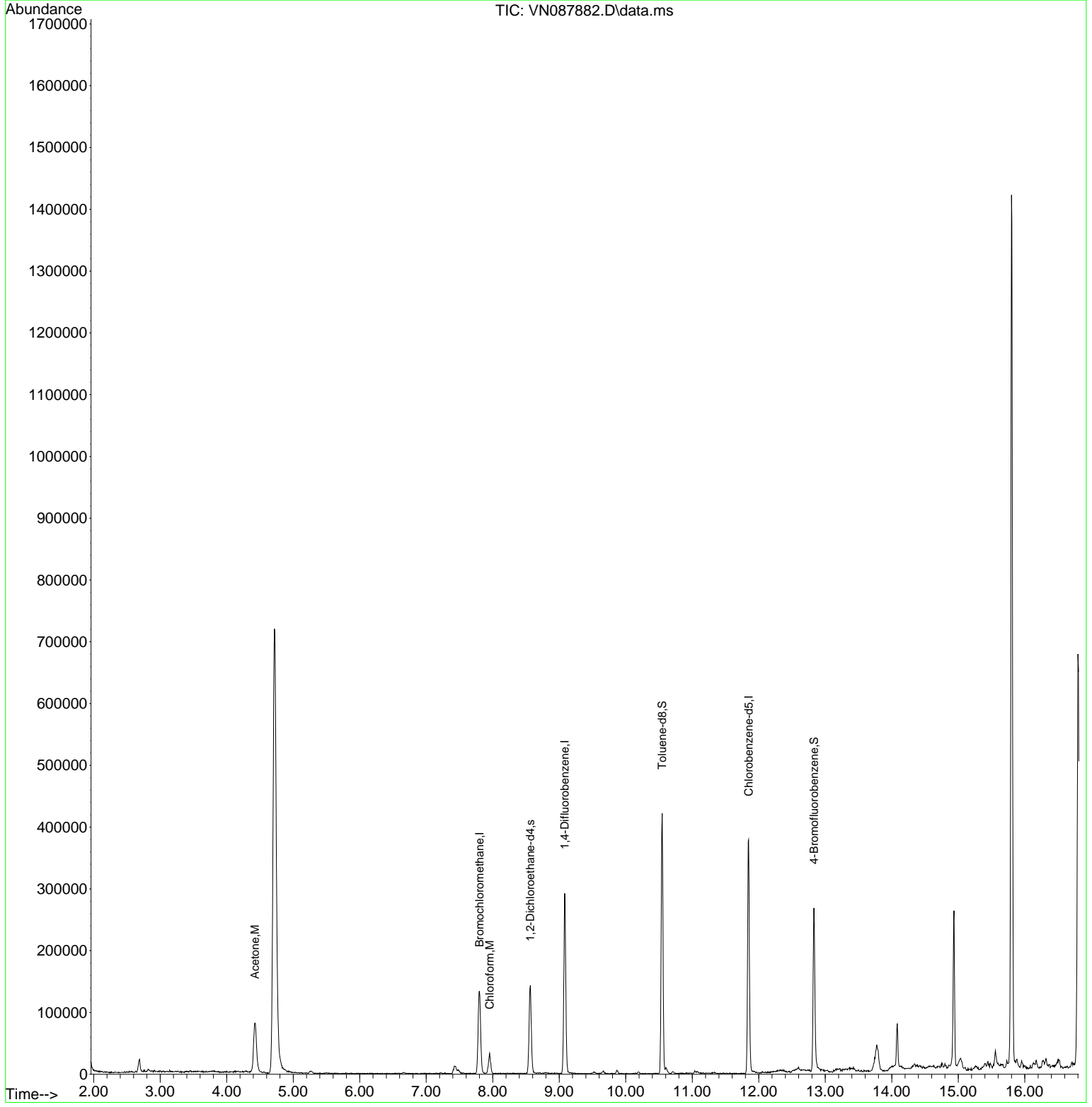
(#) = qualifier out of range (m) = manual integration (+) = signals summed

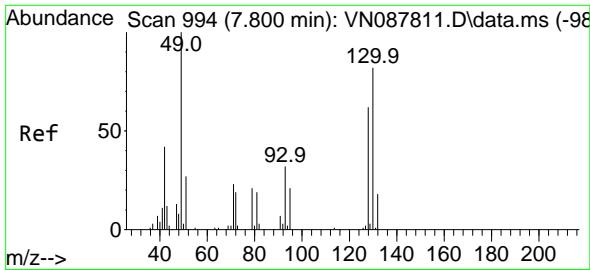
Data Path : Z:\voasrv\HPCHEM1\MSVOA\_N\Data\VN091725\  
Data File : VN087882.D  
Acq On : 17 Sep 2025 16:00  
Operator : JC\MD  
Sample : Q3098-01 5X  
Misc : 5.0mL/MSVOA\_N/WATER  
ALS Vial : 17 Sample Multiplier: 1

**Instrument :**  
MSVOA\_N  
**ClientSampleId :**  
EFF-WW

Quant Time: Sep 18 03:14:00 2025  
Quant Method : Z:\voasrv\HPCHEM1\MSVOA\_N\methods\624N090425W.M  
Quant Title : METHOD 624 VOLATILE ORGANIC ANALYSIS  
QLast Update : Fri Sep 05 03:29:53 2025  
Response via : Initial Calibration

**Manual Integrations**  
**APPROVED**  
Reviewed By :John Carlone 09/18/2025  
Supervised By :Mahesh Dadoda 09/18/2025





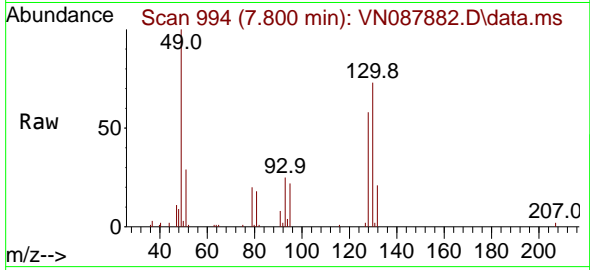
#1  
 Bromochloromethane  
 Concen: 30.000 ug/l  
 RT: 7.800 min Scan# 994  
 Delta R.T. 0.006 min  
 Lab File: VN087882.D  
 Acq: 17 Sep 2025 16:00

Instrument :

MSVOA\_N

Client SampleId :

EFF-WW



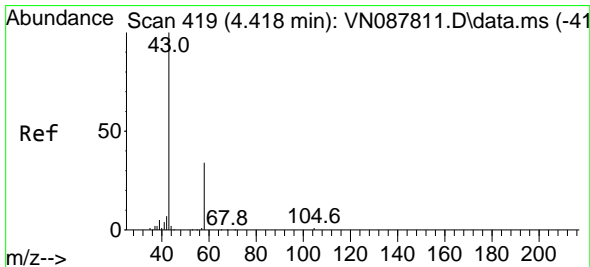
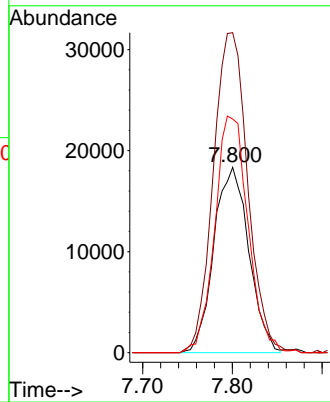
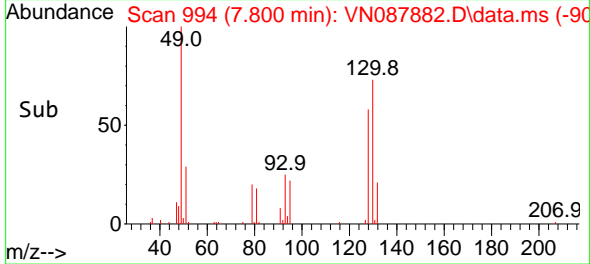
Tgt Ion:128 Resp: 4956  
 Ion Ratio Lower Upper  
 128 100  
 49 170.1 0.0 464.3  
 130 121.5 0.0 300.5

Manual Integrations

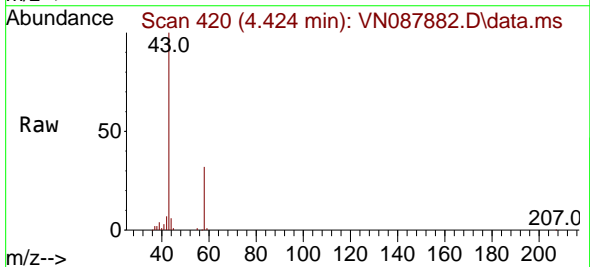
APPROVED

Reviewed By :John Carlone 09/18/2025

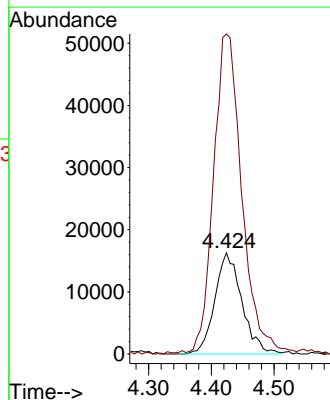
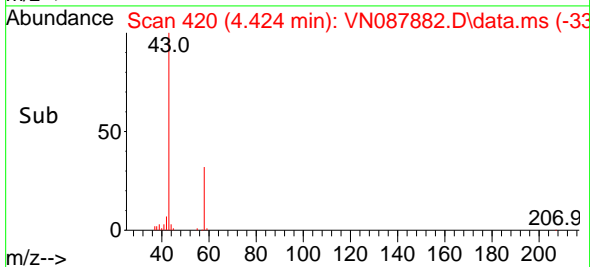
Supervised By :Mahesh Dadoda 09/18/2025

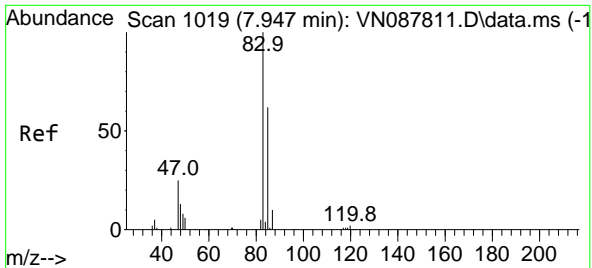


#15  
 Acetone  
 Concen: 78.844 ug/l m  
 RT: 4.424 min Scan# 420  
 Delta R.T. -0.006 min  
 Lab File: VN087882.D  
 Acq: 17 Sep 2025 16:00



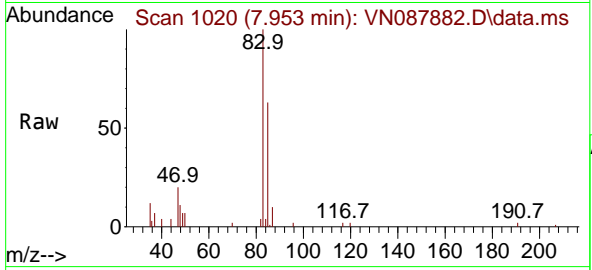
Tgt Ion: 58 Resp: 48828  
 Ion Ratio Lower Upper  
 58 100  
 43 316.2 250.6 376.0





#25  
 Chloroform  
 Concen: 4.337 ug/l  
 RT: 7.953 min Scan# 1019  
 Delta R.T. -0.000 min  
 Lab File: VN087882.D  
 Acq: 17 Sep 2025 16:00

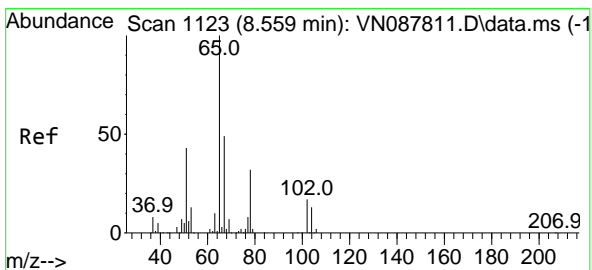
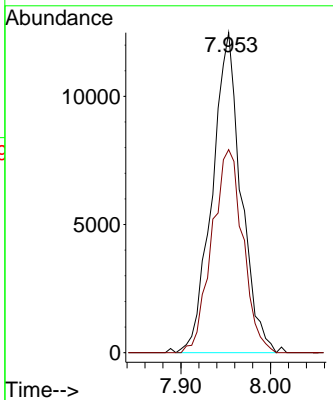
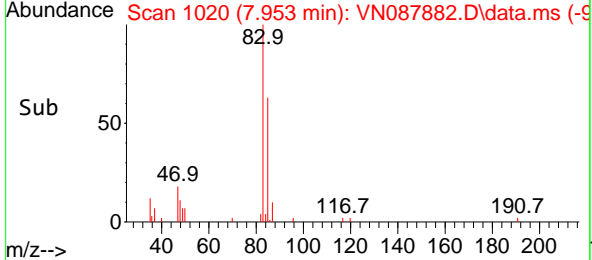
Instrument : MSVOA\_N  
 Client Sample Id : EFF-WW



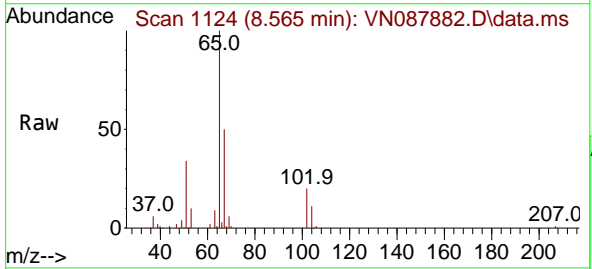
Tgt Ion: 83 Resp: 27938  
 Ion Ratio Lower Upper  
 83 100  
 85 63.5 47.7 71.5

Manual Integrations  
**APPROVED**

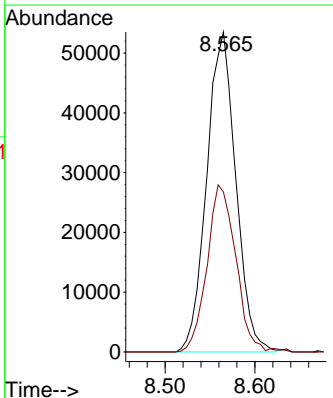
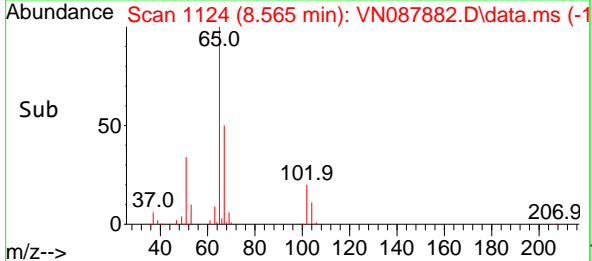
Reviewed By : John Carlone 09/18/2025  
 Supervised By : Mahesh Dadoda 09/18/2025

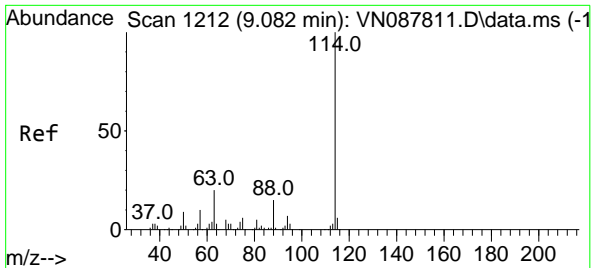


#27  
 1,2-Dichloroethane-d4  
 Concen: 28.454 ug/l  
 RT: 8.565 min Scan# 1124  
 Delta R.T. 0.006 min  
 Lab File: VN087882.D  
 Acq: 17 Sep 2025 16:00



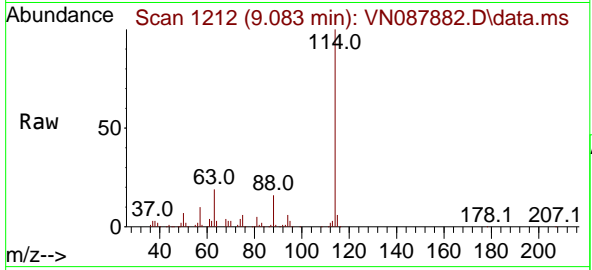
Tgt Ion: 65 Resp: 120465  
 Ion Ratio Lower Upper  
 65 100  
 67 51.3 39.6 59.4





#28  
 1,4-Difluorobenzene  
 Concen: 30.000 ug/l  
 RT: 9.083 min Scan# 1114  
 Delta R.T. -0.000 min  
 Lab File: VN087882.D  
 Acq: 17 Sep 2025 16:00

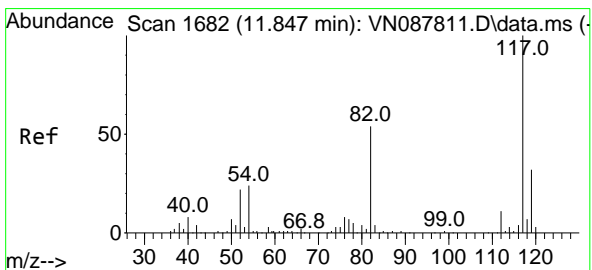
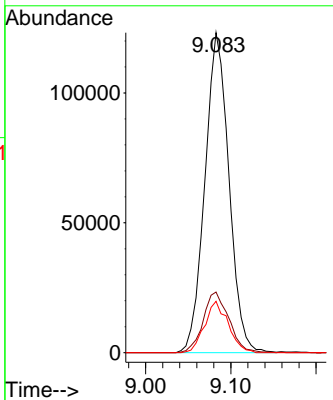
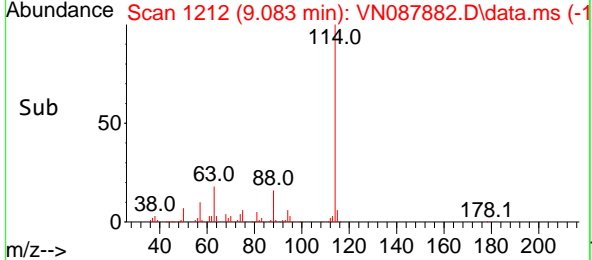
Instrument : MSVOA\_N  
 ClientSampleId : EFF-WW



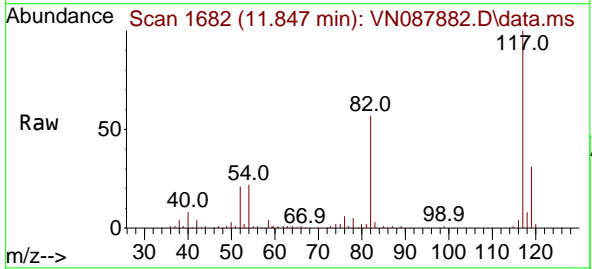
Tgt Ion:114 Resp: 241644  
 Ion Ratio Lower Upper  
 114 100  
 63 20.2 18.3 27.5  
 88 15.7 12.4 18.6

Manual Integrations  
**APPROVED**

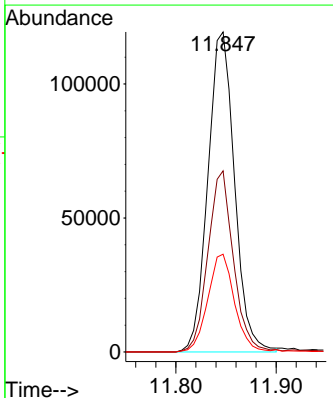
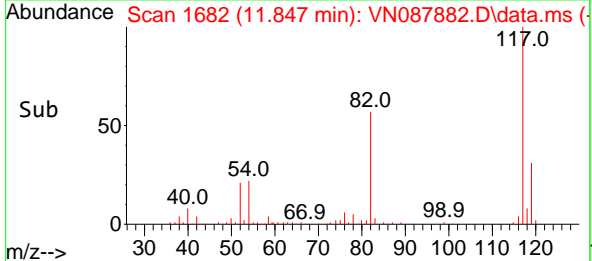
Reviewed By :John Carlone 09/18/2025  
 Supervised By :Mahesh Dadoda 09/18/2025

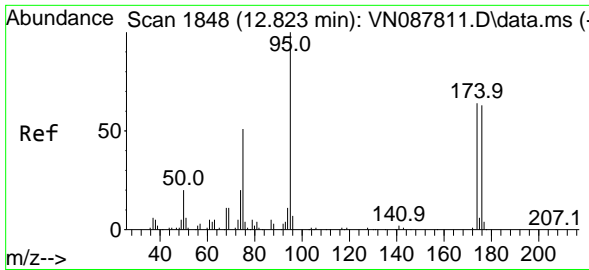


#57  
 Chlorobenzene-d5  
 Concen: 30.000 ug/l  
 RT: 11.847 min Scan# 1682  
 Delta R.T. 0.006 min  
 Lab File: VN087882.D  
 Acq: 17 Sep 2025 16:00



Tgt Ion:117 Resp: 220656  
 Ion Ratio Lower Upper  
 117 100  
 82 54.2 45.9 68.9  
 119 30.6 25.3 37.9





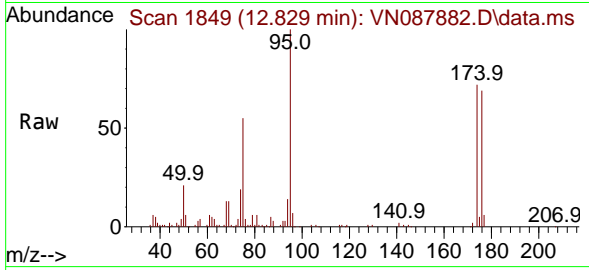
#60  
 4-Bromofluorobenzene  
 Concen: 26.925 ug/l  
 RT: 12.829 min Scan# 1848  
 Delta R.T. -0.000 min  
 Lab File: VN087882.D  
 Acq: 17 Sep 2025 16:00

Instrument :

MSVOA\_N

ClientSampleId :

EFF-WW



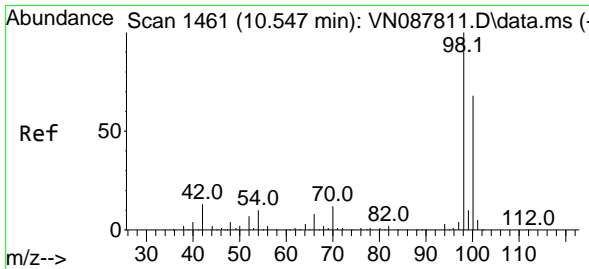
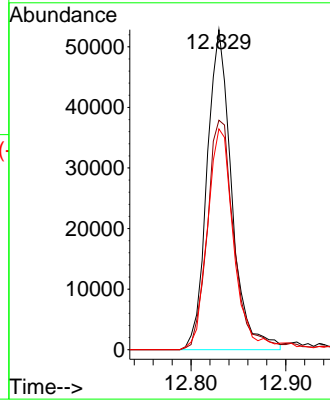
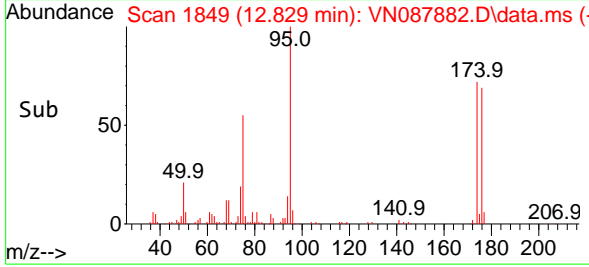
Tgt Ion: 95 Resp: 95529  
 Ion Ratio Lower Upper  
 95 100  
 174 77.5 55.4 83.0  
 176 71.7 51.5 77.3

Manual Integrations

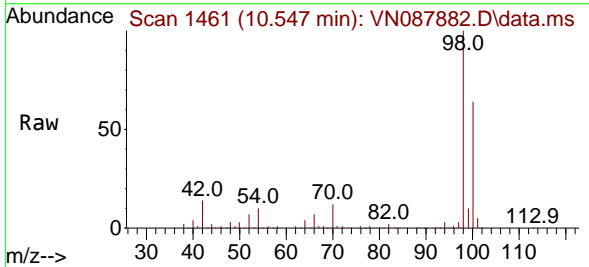
APPROVED

Reviewed By :John Carlone 09/18/2025

Supervised By :Mahesh Dadoda 09/18/2025



#63  
 Toluene-d8  
 Concen: 28.102 ug/l  
 RT: 10.547 min Scan# 1461  
 Delta R.T. -0.000 min  
 Lab File: VN087882.D  
 Acq: 17 Sep 2025 16:00



Tgt Ion: 98 Resp: 288377  
 Ion Ratio Lower Upper  
 98 100  
 100 62.4 50.6 76.0

