

LB137552

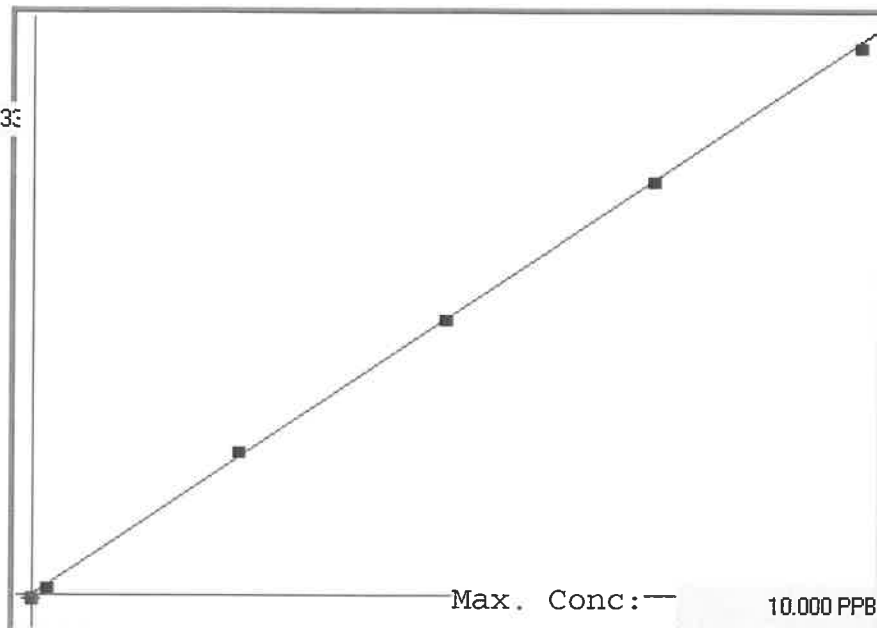
7471B

INSTRUMENT ID: CV1

Linear

μ Abs. :

45433



A= 0.0000e+000

B= 2.1886e-004

C= 6.0175e-003

Rho= 0.9998388

Accept=Accepted

Max. Conc: 10.000 PPB

Std ID	Conc.	Calc.	Dev.	Mean	SD or %RSD	Rep 1	Rep 2	Rep 3	Rep 4	Rep 5
0.0	0.000	-0.076	-0.076	-373	0.000	-373				
0.2	0.200	0.168	-0.032	741	0.0 %	741				
2.5	2.500	2.628	0.128	11982	0.0 %	11982				
5.0	5.000	5.023	0.023	22923	0.0 %	22923				
7.5	7.500	7.506	0.006	34270	0.0 %	34270				
10.0	10.000	9.950	-0.050	45433	0.0 %	45433				

# LB137552 INSTRUMENT ID : CV1

Reviewed By:  
On:  
Inst Id : CV1  
LB : LB137552

Method: 7471B

Operator: Admin

Date of Analysis: 16 Oct 2025 08:58:49

Type	Sample ID	Extended ID	Conc.	µ Abs.	Units	Type	Std Conc	Method	Date
S	0.0 - 1	50	-	-373	PPB	Std	0.0000	7471B	16 Oct 2025 09:15:18
S	0.2 - 1	50.2	-	741	PPB	Std	0.2000	7471B	16 Oct 2025 09:17:35
S	2.5 - 1	50.5	-	11982	PPB	Std	2.5000	7471B	16 Oct 2025 09:19:52
S	5.0 - 1	50.5	-	22923	PPB	Std	5.0000	7471B	16 Oct 2025 09:22:09
S	7.5 - 1	50.5	-	34270	PPB	Std	7.5000	7471B	16 Oct 2025 09:30:13
S	10.0 - 1	50.6	-	45433	PPB	Std	10.0000	7471B	16 Oct 2025 09:32:54
U	ICV74 - 1	ICV74	4.1510	18939	PPB	SMPL	-7471B		16 Oct 2025 09:36:29
U	ICB74 - 1	ICB74	-0.0618	-310	PPB	SMPL	-7471B		16 Oct 2025 09:38:52
U	CCV37 - 1	CCV37	5.1254	23391	PPB	SMPL	-7471B		16 Oct 2025 09:41:29
U	CCB37 - 1	CCB37	-0.0548	-278	PPB	SMPL	-7471B		16 Oct 2025 09:43:51
U	CRA - 1	CRA	0.1885	834	PPB	SMPL	-7471B		16 Oct 2025 09:46:30
U	HighStd - 1	HighStd	9.9923	45628	PPB	SMPL	-7471B		16 Oct 2025 09:48:45
U	ChkStd - 1	ChkStd	6.8041	31061	PPB	SMPL	-7471B		16 Oct 2025 09:51:01
U	PB170113BL - 1	PBS	-0.0546	-277	PPB	SMPL	-7471B		16 Oct 2025 09:53:49
U	PB170113BS - 1	LCSS	3.3590	15320	PPB	SMPL	-7471B		16 Oct 2025 09:56:31
U	Q3150-06 - 1	MER Rd Con Ed	0.3831	1723	PPB	SMPL	-7471B		16 Oct 2025 09:58:47
U	Q3150-07 - 1	Mid Site Grid 5-7	2.6048	11874	PPB	SMPL	-7471B		16 Oct 2025 10:01:23
U	Q3348-01 - 1	WCS-TP1	0.1406	615	PPB	SMPL	-7471B		16 Oct 2025 10:03:42
U	Q3348-01DUP - 1	WCS-TP1DUP	0.1984	879	PPB	SMPL	-7471B		16 Oct 2025 10:09:10
U	Q3348-01MS - 1	WCS-TP1MS	3.6253	16537	PPB	SMPL	-7471B		16 Oct 2025 10:11:25
U	CCV38 - 1	CCV38	5.1011	23280	PPB	SMPL	-7471B		16 Oct 2025 10:13:41
U	CCB38 - 1	CCB38	-0.0507	-259	PPB	SMPL	-7471B		16 Oct 2025 10:16:18
U	Q3348-01MSD - 1	WCS-TP1MSD	3.8057	17361	PPB	SMPL	-7471B		16 Oct 2025 10:18:57
U	Q3348-05 - 1	WCS-TP2	0.7992	3624	PPB	SMPL	-7471B		16 Oct 2025 10:21:13
U	Q3348-01LX5 - 1		-0.0139	-91	PPB	SMPL	-7471B		16 Oct 2025 10:23:50
U	Q3348-01A - 1		4.1819	19080	PPB	SMPL	-7471B		16 Oct 2025 10:26:08
U	CCV39 - 1	CCV39	5.1366	23442	PPB	SMPL	-7471B		16 Oct 2025 10:28:23
U	CCB39 - 1	CCB39	-0.0529	-269	PPB	SMPL	-7471B		16 Oct 2025 10:31:02