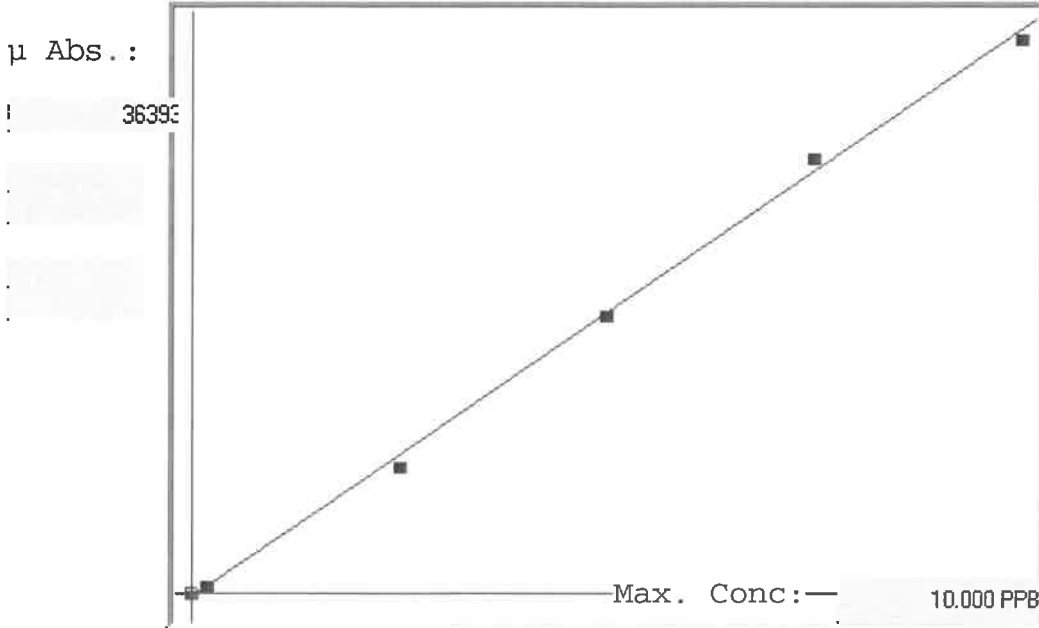


LB 137 274

7470A

INSTRUMENT ID: CV1

Linear



A= 0.0000e+000

B= 2.6849e-004

C= 6.7354e-002

Rho= 0.9991749

Accept= Accepted

Std ID	Conc.	Calc.	Dev.	Mean	SD or %RSD	Rep 1	Rep 2	Rep 3	Rep 4	Rep 5	o/w
0.0	0.000	0.068	0.068	4	0.000	4	0				1
0.2	0.200	0.221	0.021	574	0.0 %	574	0				1
2.5	2.500	2.317	-0.183	8380	0.0 %	8380	0				7
5.0	5.000	4.990	-0.010	18334	0.0 %	18334					0
7.5	7.500	7.765	0.265	28669	0.0 %	28669					4
10.0	10.000	9.838	-0.162	36393	0.0 %	36393					2

# LB137274 INSTRUMENT ID : CV1

Method: 7470A      Operator: Admin      Date of Analysis: 23 Sep 2025 10:43:19

Type	Sample ID	Extended ID	Conc.	µ Abs.	Units	Type	Std Conc	Method	Date
S	0.0 - 1	S0	-	4	PPB	Std	0.0000	7470A	23 Sep 2025 10:48:15
S	0.2 - 1	S0.2	-	574	PPB	Std	0.2000	7470A	23 Sep 2025 10:50:31
S	2.5 - 1	S2.5	-	8380	PPB	Std	2.5000	7470A	23 Sep 2025 10:52:48
S	5.0 - 1	S5	-	18334	PPB	Std	5.0000	7470A	23 Sep 2025 10:55:07
S	7.5 - 1	S7.5	-	28669	PPB	Std	7.5000	7470A	23 Sep 2025 11:00:17
S	10.0 - 1	S10	-	36393	PPB	Std	10.0000	7470A	23 Sep 2025 11:05:21
U	ICV41 - 1	ICV41	4.0388	14792	PPB	SMPL	-7470A		23 Sep 2025 11:14:19
U	ICB41 - 1	ICB41	0.0037	-237	PPB	SMPL	-7470A		23 Sep 2025 11:16:36
U	CCV24 - 1	CCV24	5.3606	19715	PPB	SMPL	-7470A		23 Sep 2025 11:24:11
U	CCB24 - 1	CCB24	-0.0057	-272	PPB	SMPL	-7470A		23 Sep 2025 11:26:27
U	CRA - 1	CRA	0.2158	553	PPB	SMPL	-7470A		23 Sep 2025 11:28:47
U	HighStd - 1	HighStd	9.8996	36621	PPB	SMPL	-7470A		23 Sep 2025 11:31:02
U	ChkStd - 1	ChkStd	7.0367	25958	PPB	SMPL	-7470A		23 Sep 2025 11:33:18
U	PB169781BL - 1	PBW	-0.0223	-334	PPB	SMPL	-7470A		23 Sep 2025 11:35:41
U	PB169781BS - 1	LCSW	4.6703	17144	PPB	SMPL	-7470A		23 Sep 2025 11:38:03
U	Q3133-02 - 1	VNJ-238	-0.0062	-274	PPB	SMPL	-7470A		23 Sep 2025 11:40:19
U	Q3133-04 - 1	VNJ-222	0.0601	-27	PPB	SMPL	-7470A		23 Sep 2025 11:42:38
U	Q3133-06 - 1	361	0.0663	-4	PPB	SMPL	-7470A		23 Sep 2025 11:44:56
U	Q3133-08 - 1	VNJ-210	0.0682	3	PPB	SMPL	-7470A		23 Sep 2025 11:47:12
U	Q3136-01 - 1	34922	0.1248	214	PPB	SMPL	-7470A		23 Sep 2025 11:49:28
U	CCV25 - 1	CCV25	4.8956	17983	PPB	SMPL	-7470A		23 Sep 2025 11:51:43
U	CCB25 - 1	CCB25	0.0276	-148	PPB	SMPL	-7470A		23 Sep 2025 11:53:58
U	Q3136-02 - 1	34923	0.0867	72	PPB	SMPL	-7470A		23 Sep 2025 11:56:17
U	Q3136-03 - 1	34924	0.0674	0	PPB	SMPL	-7470A		23 Sep 2025 11:58:32
U	Q3136-04 - 1	34925	0.0376	-111	PPB	SMPL	-7470A		23 Sep 2025 12:00:48
U	Q3136-05 - 1	34926	0.1015	127	PPB	SMPL	-7470A		23 Sep 2025 12:03:04
U	Q3138-08 - 1	MOO-25-0239-0241	0.0225	-167	PPB	SMPL	-7470A		23 Sep 2025 12:05:20
U	Q3150-01 - 1	MER Rd Con Ed	0.0644	-11	PPB	SMPL	-7470A		23 Sep 2025 12:07:36
U	Q3150-03 - 1	Mid Site Grid 5-7	0.0580	-35	PPB	SMPL	-7470A		23 Sep 2025 12:09:52
U	Q3153-04 - 1	OR-500-COMP-39	0.0609	-24	PPB	SMPL	-7470A		23 Sep 2025 12:12:09
U	Q3153-08 - 1	OR-500-COMP-40	0.0679	2	PPB	SMPL	-7470A		23 Sep 2025 12:14:26
U	Q3157-02 - 1	20-DEAD-1	0.0679	2	PPB	SMPL	-7470A		23 Sep 2025 12:16:42
U	CCV26 - 1	CCV26	4.9262	18097	PPB	SMPL	-7470A		23 Sep 2025 12:24:37
U	CCB26 - 1	CCB26	0.0080	-221	PPB	SMPL	-7470A		23 Sep 2025 12:26:52
U	Q3157-02DUP - 1	20-DEAD-1DUP	0.0768	35	PPB	SMPL	-7470A		23 Sep 2025 12:29:11
U	Q3157-02MS - 1	20-DEAD-1MS	4.9573	18213	PPB	SMPL	-7470A		23 Sep 2025 12:31:26
U	Q3157-02MSD - 1	20-DEAD-1MSD	4.5828	16818	PPB	SMPL	-7470A		23 Sep 2025 12:33:42
U	PB169754TB - 1	PB169754TB	-0.0006	-253	PPB	SMPL	-7470A		23 Sep 2025 12:36:01
U	Q3157-02LX5 - 1		0.0633	-15	PPB	SMPL	-7470A		23 Sep 2025 12:38:20
U	Q3157-02A - 1		4.7938	17604	PPB	SMPL	-7470A		23 Sep 2025 12:40:36
U	CCV27 - 1	CCV27	4.9748	18278	PPB	SMPL	-7470A		23 Sep 2025 12:42:53
U	CCB27 - 1	CCB27	-0.0000	-251	PPB	SMPL	-7470A		23 Sep 2025 12:45:14