

Data Path : Z:\pestpcbsrv\HPCHEM1\ECD_0\Data\P0091525\
 Data File : P0113720.D
 Signal(s) : Signal #1: ECD1A.ch Signal #2: ECD2B.ch
 Acq On : 15 Sep 2025 09:34
 Operator : YP/AJ
 Sample : AR1660ICC1000
 Misc :
 ALS Vial : 3 Sample Multiplier: 1

Instrument :
 ECD_0
 ClientSampleId :
 AR1660ICC1000

Integration File signal 1: autoint1.e
 Integration File signal 2: autoint2.e
 Quant Time: Sep 15 11:09:09 2025
 Quant Method : Z:\pestpcbsrv\HPCHEM1\ECD_0\methods\P0091525.M
 Quant Title : GC EXTRACTABLES
 QLast Update : Mon Sep 15 11:05:06 2025
 Response via : Initial Calibration
 Integrator: ChemStation

Volume Inj. : 2 µl
 Signal #1 Phase : ZB-MR1 Signal #2 Phase: ZB-MR2
 Signal #1 Info : 30Mx0.32mmx 0.50µ Signal #2 Info : 30M x 0.32mm x 0.25µm

Compound	RT#1	RT#2	Resp#1	Resp#2	ng/ml	ng/ml

System Monitoring Compounds						
1) SA Tetrachlo...	3.659	3.651	840.8E6	502.4E6	98.240	98.144
2) SA Decachlor...	8.670	8.614	633.0E6	197.1E6	98.508	98.119
Target Compounds						
3) L1 AR-1016-1	4.742	4.723	279.8E6	161.2E6	978.279	966.953
4) L1 AR-1016-2	4.760	4.740	419.6E6	247.7E6	976.706	964.091
5) L1 AR-1016-3	4.818	4.915	264.6E6	132.5E6	966.880	958.054
6) L1 AR-1016-4	4.937	4.958	220.7E6	104.2E6	965.239	947.464
7) L1 AR-1016-5	5.193	5.170	221.2E6	131.1E6	958.114	951.022
31) L7 AR-1260-1	6.228	6.196	451.6E6	220.7E6	975.684	963.852
32) L7 AR-1260-2	6.418	6.384	696.3E6	290.8E6	963.573	963.174
33) L7 AR-1260-3	6.783	6.535	575.0E6	243.2E6	950.051	955.595
34) L7 AR-1260-4	7.041	7.003	393.9E6	166.4E6	972.175	953.731
35) L7 AR-1260-5	7.285	7.246	1123.7E6	376.7E6	1005.310	969.500

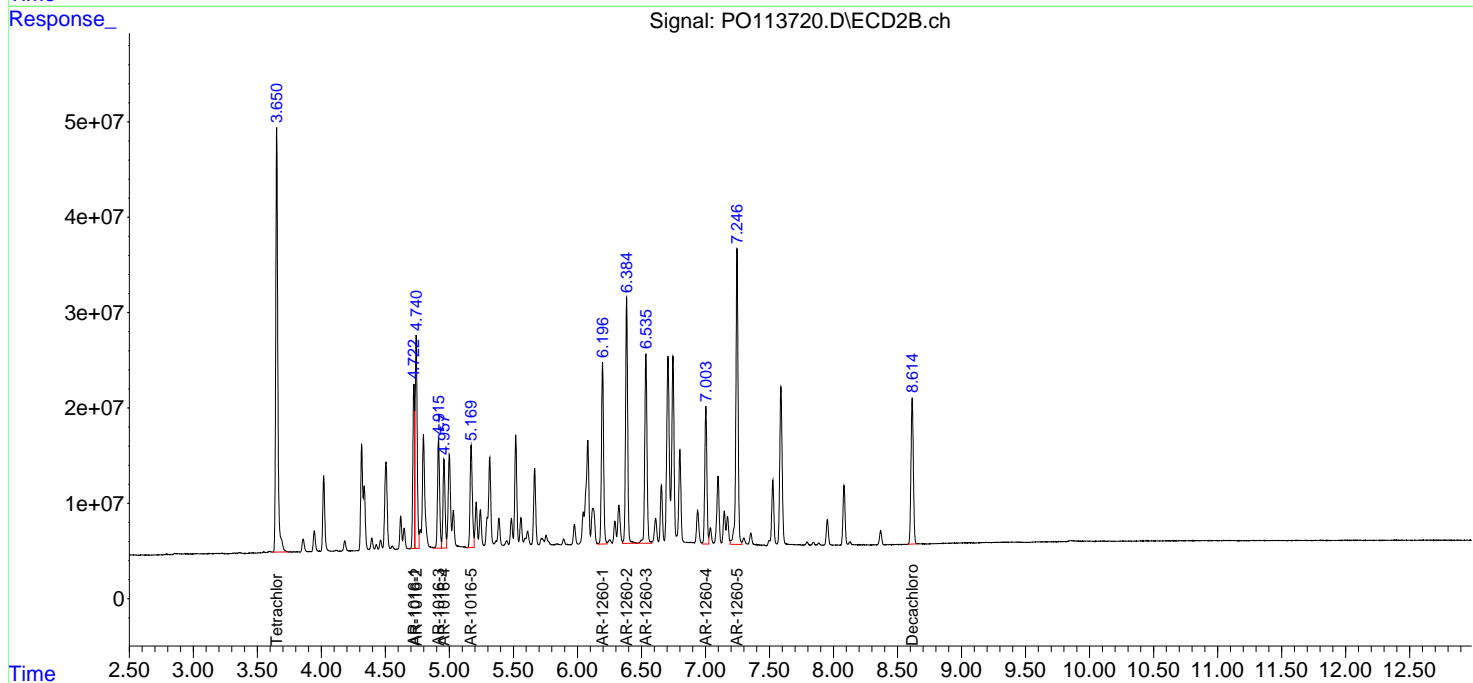
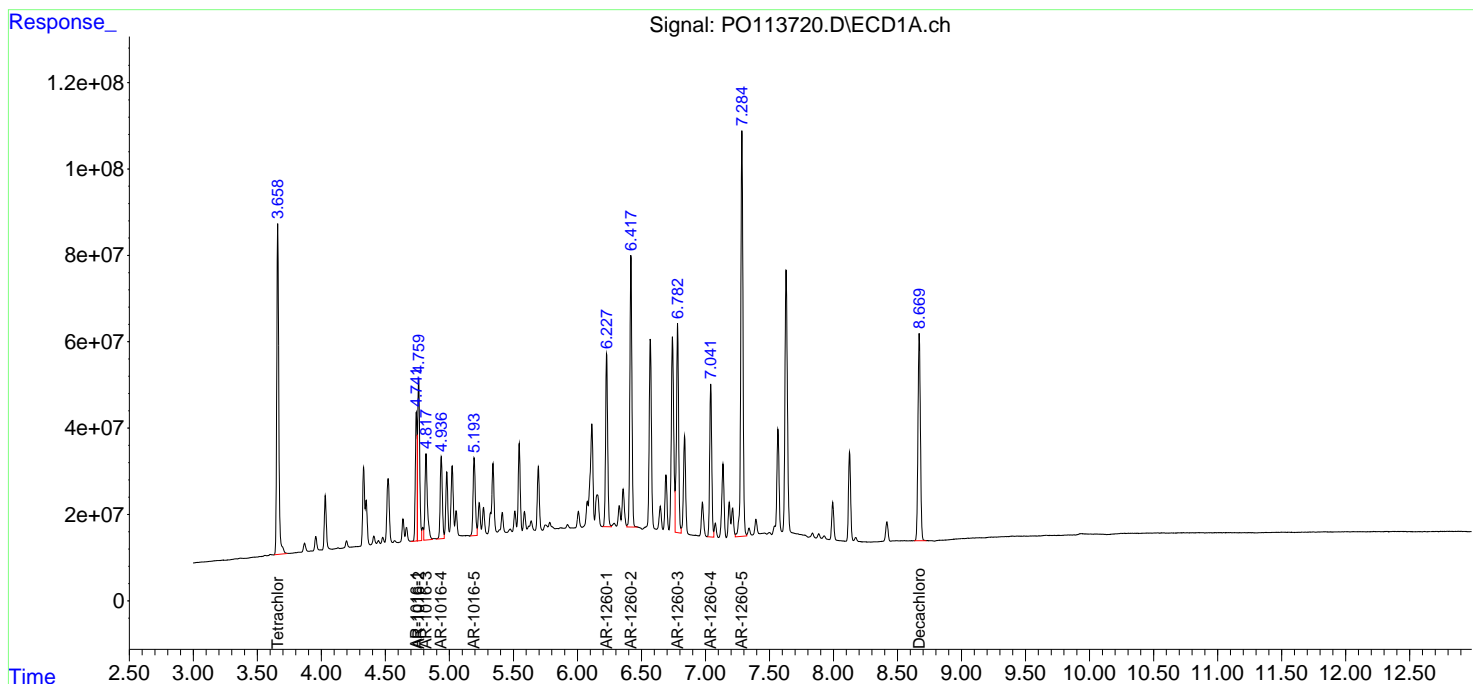
(f)=RT Delta > 1/2 Window (#)=Amounts differ by > 25% (m)=manual int.

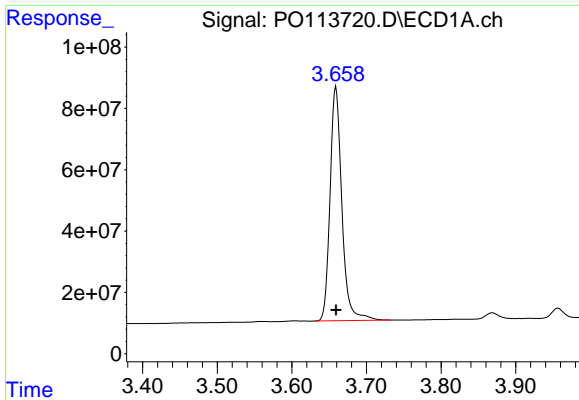
Data Path : Z:\pestpcbsrv\HPCHEM1\ECD_O\Data\PO091525\
 Data File : PO113720.D
 Signal(s) : Signal #1: ECD1A.ch Signal #2: ECD2B.ch
 Acq On : 15 Sep 2025 09:34
 Operator : YP/AJ
 Sample : AR1660ICC1000
 Misc :
 ALS Vial : 3 Sample Multiplier: 1

Instrument :
 ECD_O
 ClientSampleId :
 AR1660ICC1000

Integration File signal 1: autoint1.e
 Integration File signal 2: autoint2.e
 Quant Time: Sep 15 11:09:09 2025
 Quant Method : Z:\pestpcbsrv\HPCHEM1\ECD_O\methods\PO091525.M
 Quant Title : GC EXTRACTABLES
 QLast Update : Mon Sep 15 11:05:06 2025
 Response via : Initial Calibration
 Integrator: ChemStation

Volume Inj. : 2 µl
 Signal #1 Phase : ZB-MR1 Signal #2 Phase: ZB-MR2
 Signal #1 Info : 30Mx0.32mmx 0.50µ Signal #2 Info : 30M x 0.32mm x 0.25µm

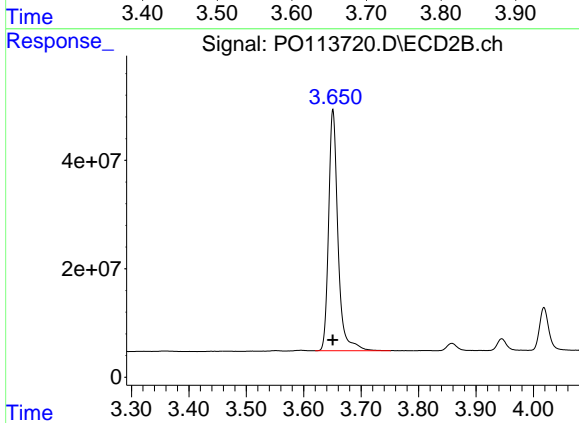




#1 Tetrachloro-m-xylene

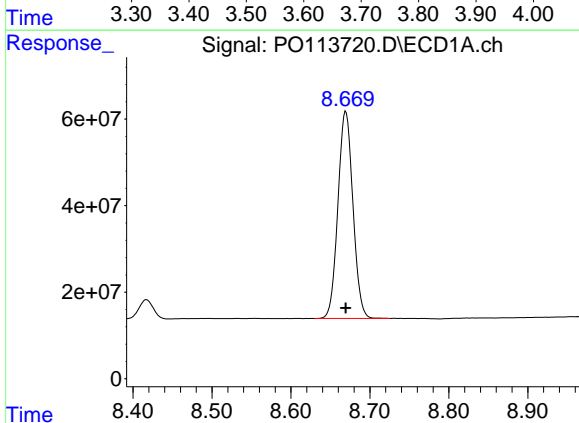
R.T.: 3.659 min
Delta R.T.: 0.000 min
Response: 840838927
Conc: 98.24 ng/ml

Instrument :
ECD_O
ClientSampleId :
AR1660ICC1000



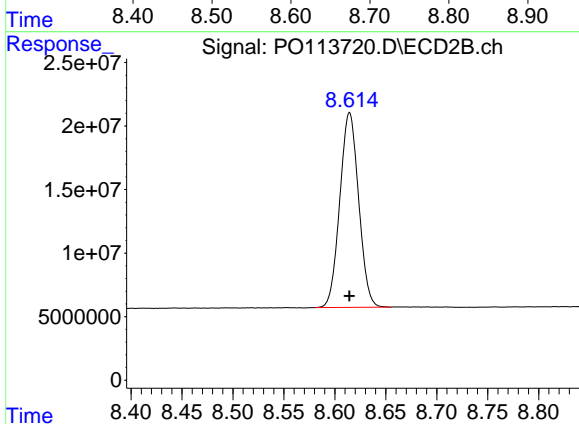
#1 Tetrachloro-m-xylene

R.T.: 3.651 min
Delta R.T.: 0.000 min
Response: 502369993
Conc: 98.14 ng/ml



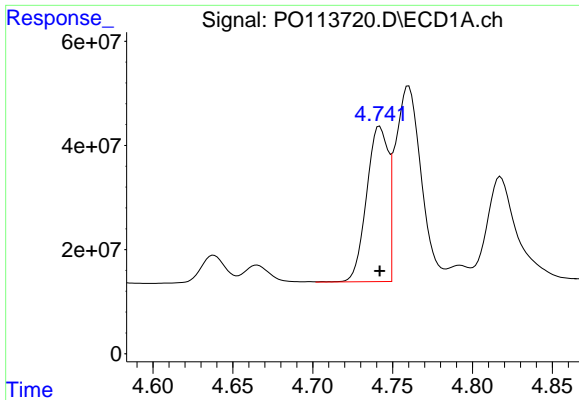
#2 Decachlorobiphenyl

R.T.: 8.670 min
Delta R.T.: 0.000 min
Response: 632990565
Conc: 98.51 ng/ml



#2 Decachlorobiphenyl

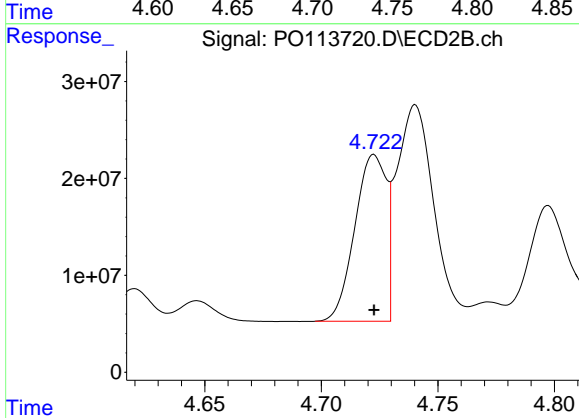
R.T.: 8.614 min
Delta R.T.: 0.000 min
Response: 197108800
Conc: 98.12 ng/ml



#3 AR-1016-1

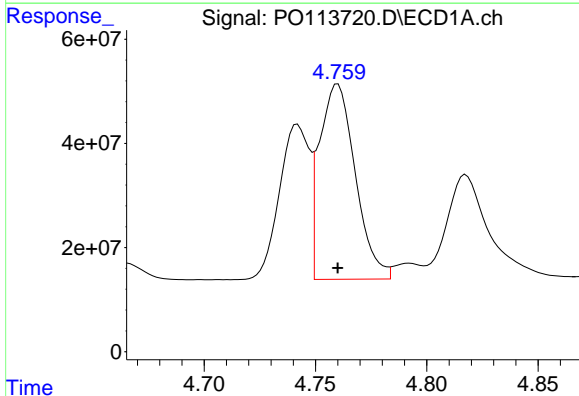
R.T.: 4.742 min
 Delta R.T.: 0.000 min
 Response: 279831097
 Conc: 978.28 ng/ml

Instrument :
 ECD_O
 ClientSampleId :
 AR1660ICC1000



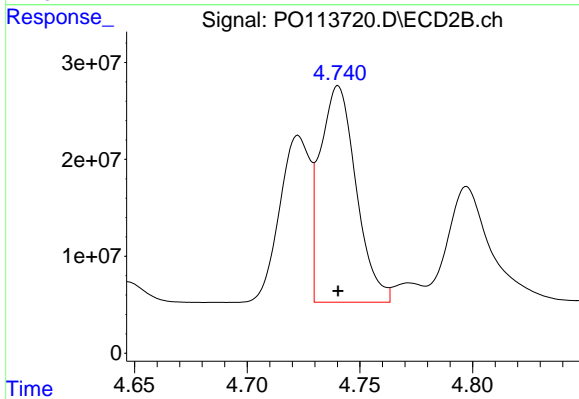
#3 AR-1016-1

R.T.: 4.723 min
 Delta R.T.: 0.000 min
 Response: 161194959
 Conc: 966.95 ng/ml



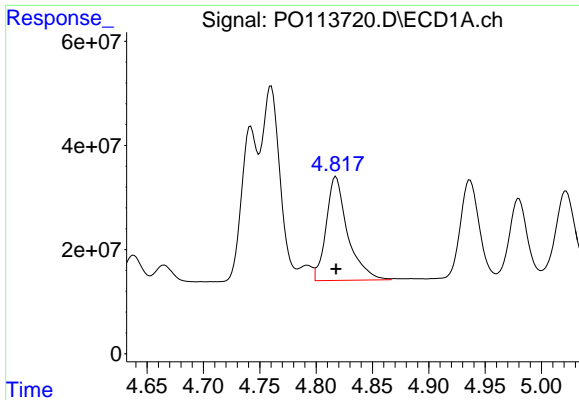
#4 AR-1016-2

R.T.: 4.760 min
 Delta R.T.: 0.000 min
 Response: 419615441
 Conc: 976.71 ng/ml



#4 AR-1016-2

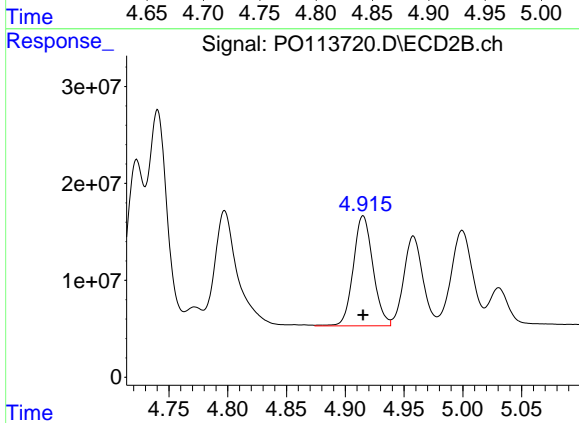
R.T.: 4.740 min
 Delta R.T.: 0.000 min
 Response: 247660649
 Conc: 964.09 ng/ml



#5 AR-1016-3

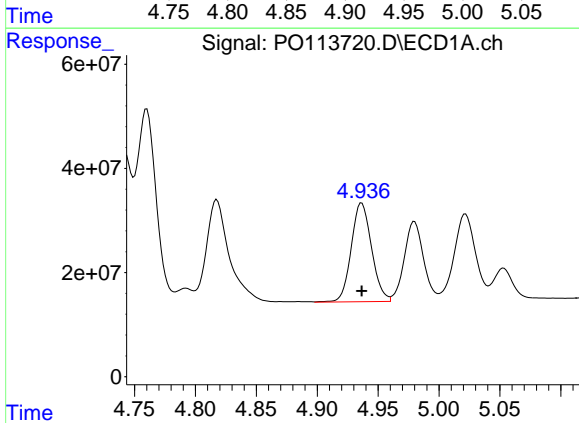
R.T.: 4.818 min
 Delta R.T.: 0.000 min
 Response: 264606829
 Conc: 966.88 ng/ml

Instrument :
 ECD_O
 ClientSampleId :
 AR1660ICC1000



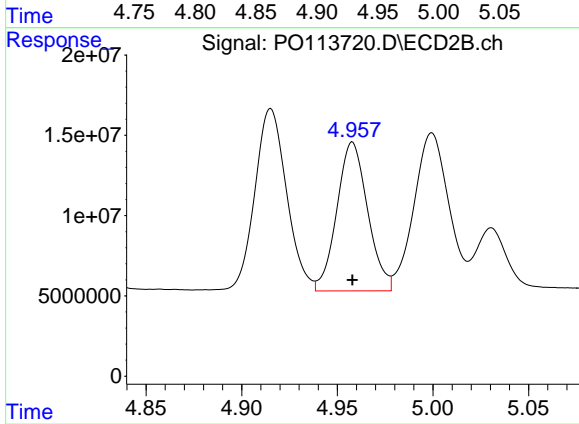
#5 AR-1016-3

R.T.: 4.915 min
 Delta R.T.: 0.000 min
 Response: 132478875
 Conc: 958.05 ng/ml



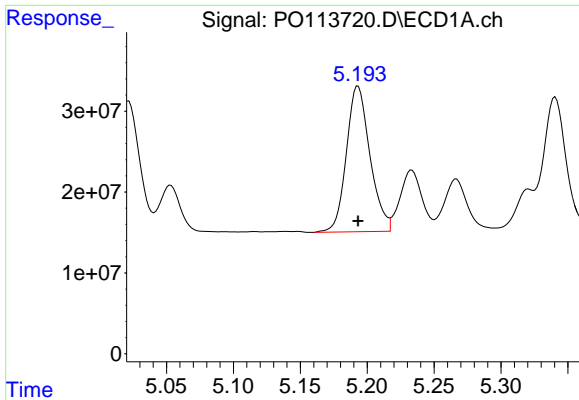
#6 AR-1016-4

R.T.: 4.937 min
 Delta R.T.: 0.000 min
 Response: 220679515
 Conc: 965.24 ng/ml



#6 AR-1016-4

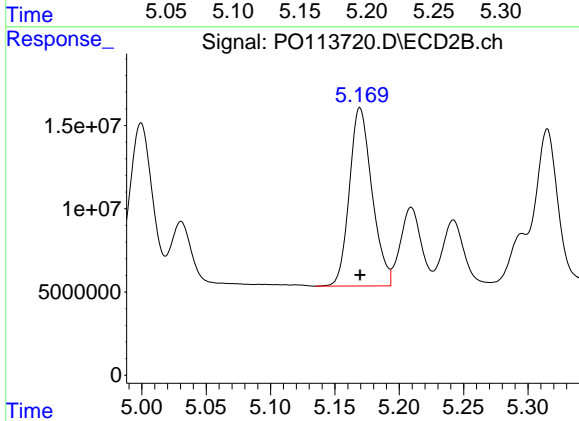
R.T.: 4.958 min
 Delta R.T.: 0.000 min
 Response: 104213080
 Conc: 947.46 ng/ml



#7 AR-1016-5

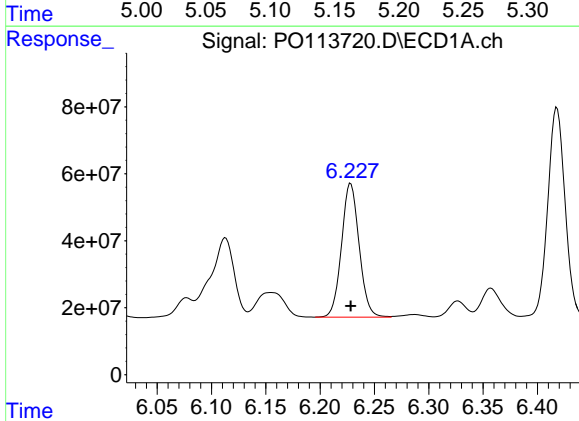
R.T.: 5.193 min
 Delta R.T.: 0.000 min
 Response: 221161183
 Conc: 958.11 ng/ml

Instrument :
 ECD_O
 ClientSampleId :
 AR1660ICC1000



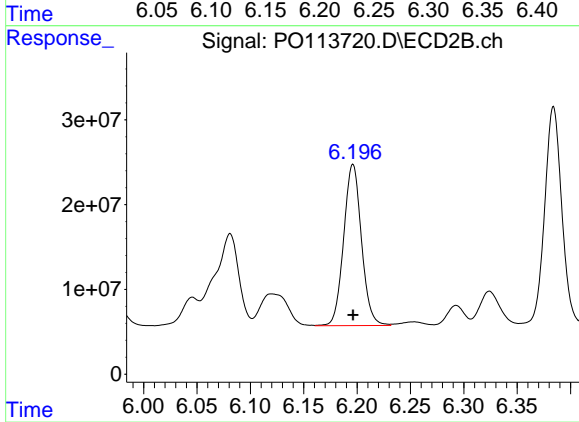
#7 AR-1016-5

R.T.: 5.170 min
 Delta R.T.: 0.000 min
 Response: 131110272
 Conc: 951.02 ng/ml



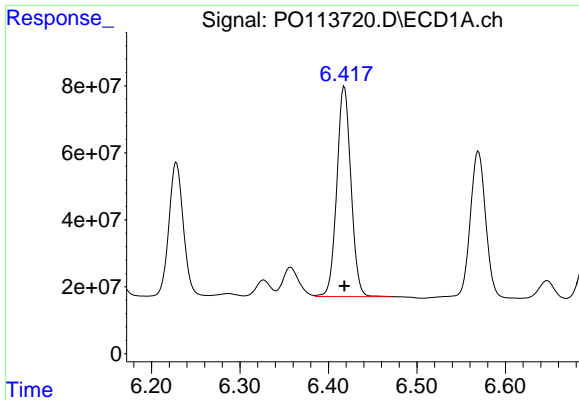
#31 AR-1260-1

R.T.: 6.228 min
 Delta R.T.: 0.000 min
 Response: 451552761
 Conc: 975.68 ng/ml



#31 AR-1260-1

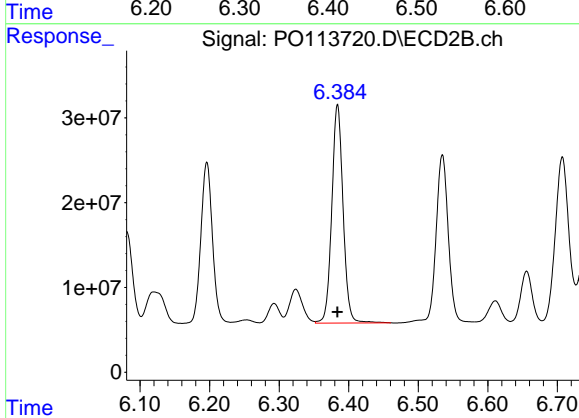
R.T.: 6.196 min
 Delta R.T.: 0.000 min
 Response: 220737147
 Conc: 963.85 ng/ml



#32 AR-1260-2

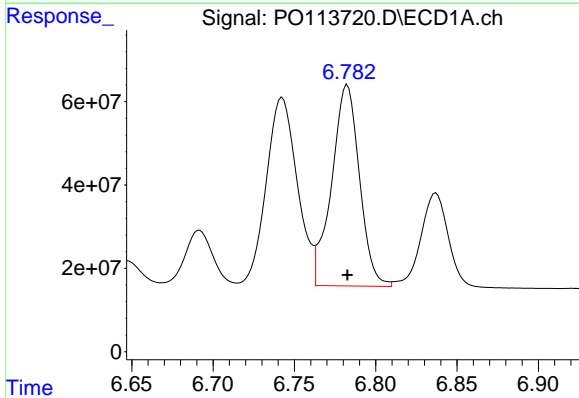
R.T.: 6.418 min
 Delta R.T.: 0.000 min
 Response: 696304563
 Conc: 963.57 ng/ml

Instrument :
 ECD_O
 ClientSampleId :
 AR1660ICC1000



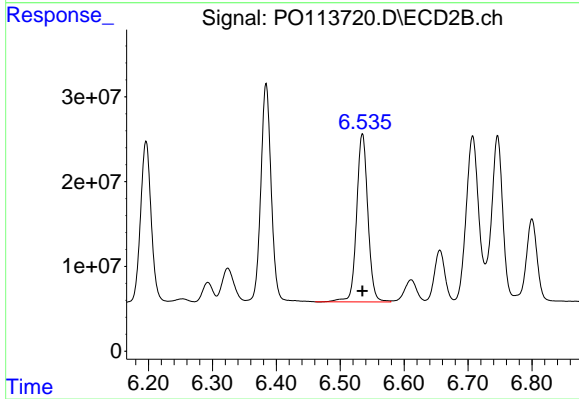
#32 AR-1260-2

R.T.: 6.384 min
 Delta R.T.: 0.000 min
 Response: 290821079
 Conc: 963.17 ng/ml



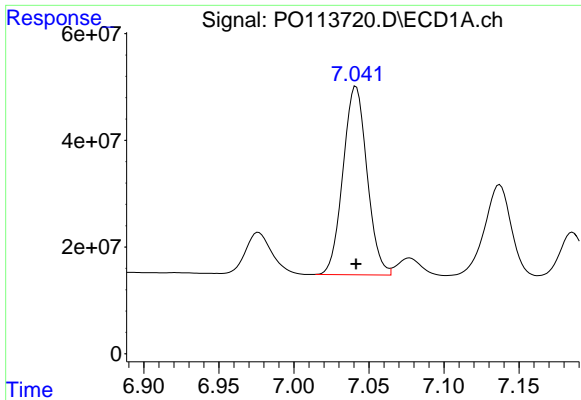
#33 AR-1260-3

R.T.: 6.783 min
 Delta R.T.: 0.000 min
 Response: 574976216
 Conc: 950.05 ng/ml



#33 AR-1260-3

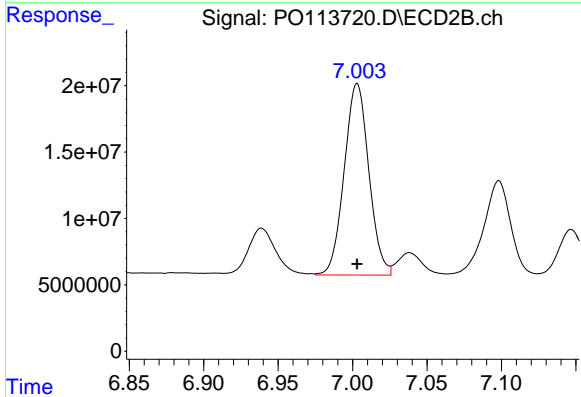
R.T.: 6.535 min
 Delta R.T.: 0.000 min
 Response: 243248258
 Conc: 955.60 ng/ml



#34 AR-1260-4

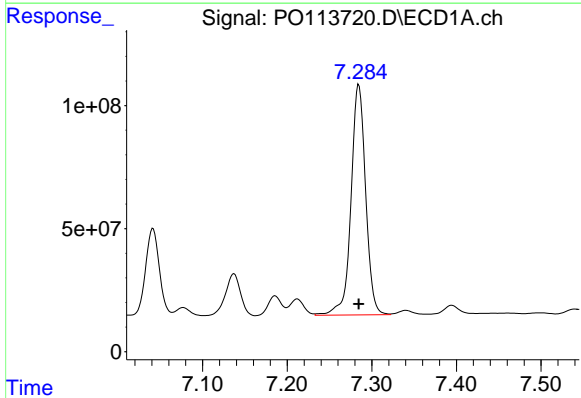
R.T.: 7.041 min
 Delta R.T.: 0.000 min
 Response: 393925161
 Conc: 972.17 ng/ml

Instrument :
 ECD_O
 ClientSampleId :
 AR1660ICC1000



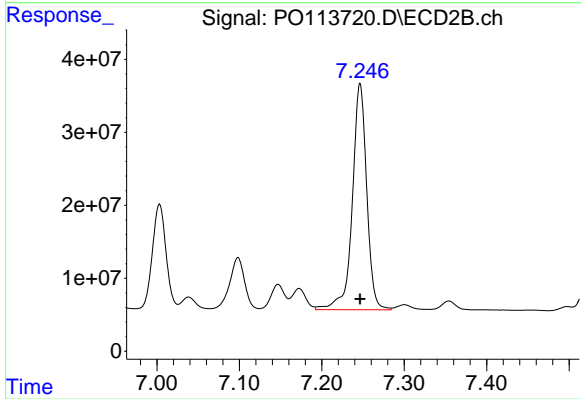
#34 AR-1260-4

R.T.: 7.003 min
 Delta R.T.: 0.000 min
 Response: 166358067
 Conc: 953.73 ng/ml



#35 AR-1260-5

R.T.: 7.285 min
 Delta R.T.: 0.000 min
 Response: 1123652016
 Conc: 1005.31 ng/ml



#35 AR-1260-5

R.T.: 7.246 min
 Delta R.T.: 0.000 min
 Response: 376721298
 Conc: 969.50 ng/ml