

Data Path : Z:\pestpcbsrv\HPCHEM1\ECD_0\Data\P0092925\
 Data File : PO114096.D
 Signal(s) : Signal #1: ECD1A.ch Signal #2: ECD2B.ch
 Acq On : 29 Sep 2025 14:52
 Operator : YP/AJ
 Sample : I.BLK
 Misc :
 ALS Vial : 2 Sample Multiplier: 1

Instrument :
 ECD_0
 ClientSampleId :
 I.BLK

Integration File signal 1: autoint1.e
 Integration File signal 2: autoint2.e
 Quant Time: Sep 30 02:32:38 2025
 Quant Method : Z:\pestpcbsrv\HPCHEM1\ECD_0\methods\P0091525.M
 Quant Title : GC EXTRACTABLES
 QLast Update : Tue Sep 16 02:49:23 2025
 Response via : Initial Calibration
 Integrator: ChemStation

Volume Inj. : 2 µl
 Signal #1 Phase : ZB-MR1 Signal #2 Phase: ZB-MR2
 Signal #1 Info : 30Mx0.32mmx 0.50µ Signal #2 Info : 30M x 0.32mm x 0.25µm

Compound	RT#1	RT#2	Resp#1	Resp#2	ng/ml	ng/ml

System Monitoring Compounds						
1) SA Tetrachlo...	3.659	3.649	163.2E6	94452340	18.507	17.684
2) SA Decachlor...	8.664	8.608	139.0E6	40839220	20.778	19.561

Target Compounds

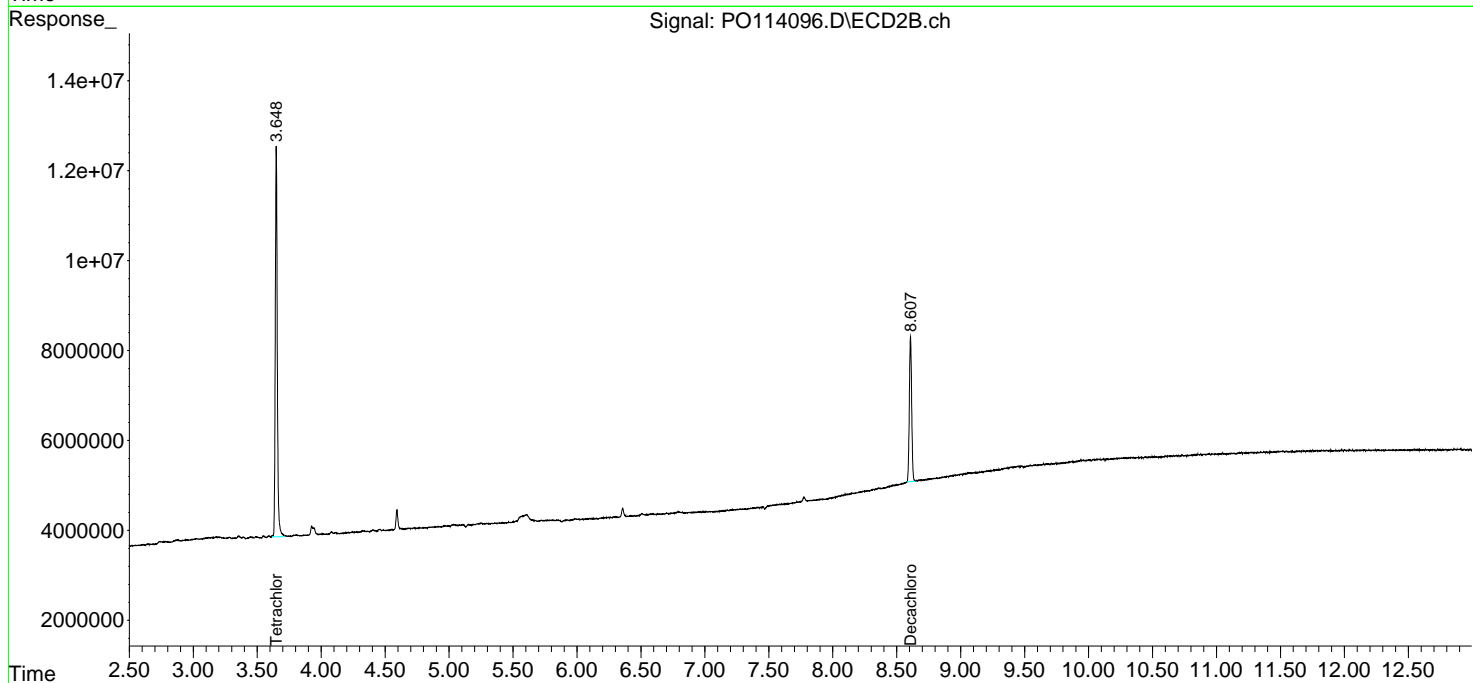
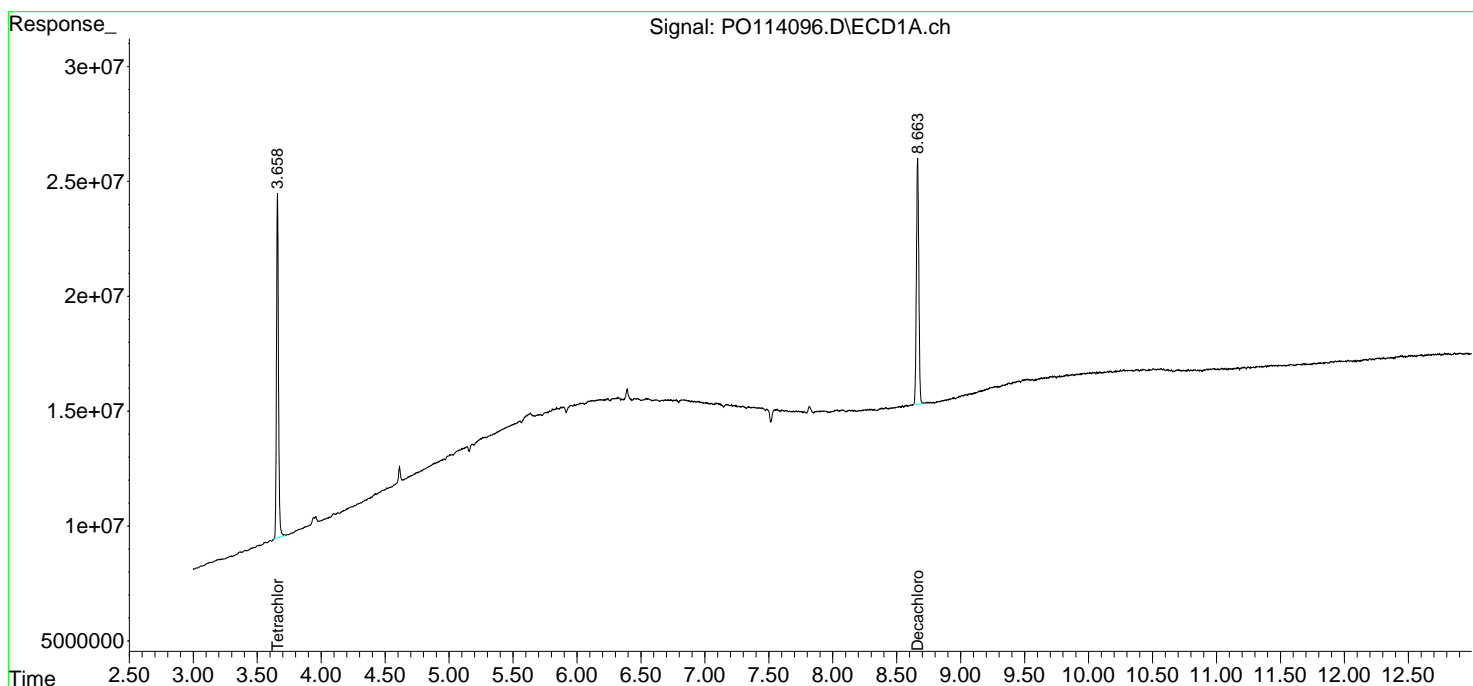
(f)=RT Delta > 1/2 Window (#)=Amounts differ by > 25% (m)=manual int.

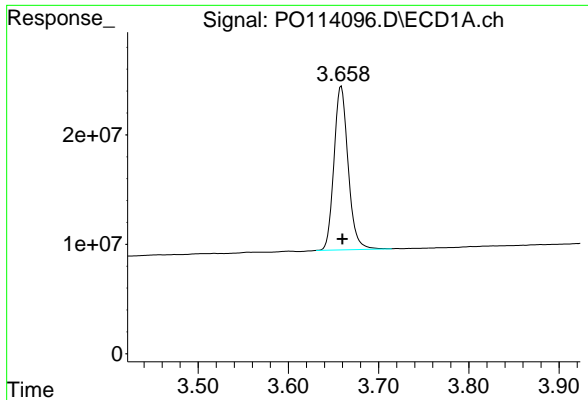
Data Path : Z:\pestpcbsrv\HPCHEM1\ECD_0\Data\P0092925\
 Data File : P0114096.D
 Signal(s) : Signal #1: ECD1A.ch Signal #2: ECD2B.ch
 Acq On : 29 Sep 2025 14:52
 Operator : YP/AJ
 Sample : I.BLK
 Misc :
 ALS Vial : 2 Sample Multiplier: 1

Instrument :
 ECD_0
 ClientSampleId :
 I.BLK

Integration File signal 1: autoint1.e
 Integration File signal 2: autoint2.e
 Quant Time: Sep 30 02:32:38 2025
 Quant Method : Z:\pestpcbsrv\HPCHEM1\ECD_0\methods\P0091525.M
 Quant Title : GC EXTRACTABLES
 QLast Update : Tue Sep 16 02:49:23 2025
 Response via : Initial Calibration
 Integrator: ChemStation

Volume Inj. : 2 µl
 Signal #1 Phase : ZB-MR1 Signal #2 Phase: ZB-MR2
 Signal #1 Info : 30Mx0.32mmx 0.50µ Signal #2 Info : 30M x 0.32mm x 0.25µm

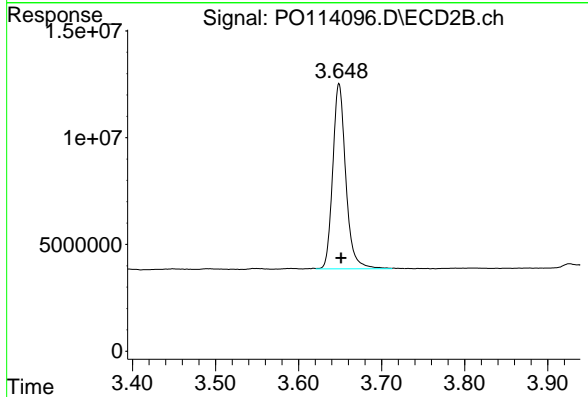




#1 Tetrachloro-m-xylene

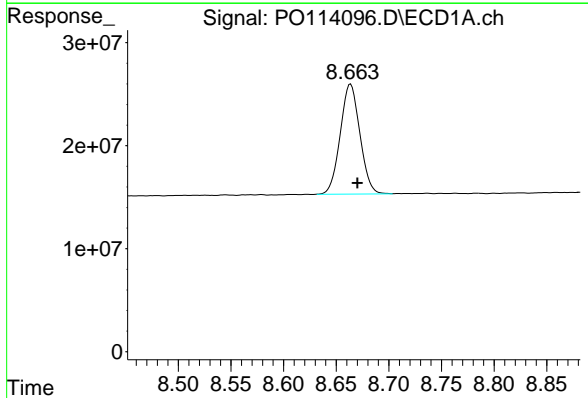
R.T.: 3.659 min
 Delta R.T.: -0.001 min
 Response: 163227845
 Conc: 18.51 ng/ml

Instrument :
 ECD_O
 ClientSampleId :
 I.BLK



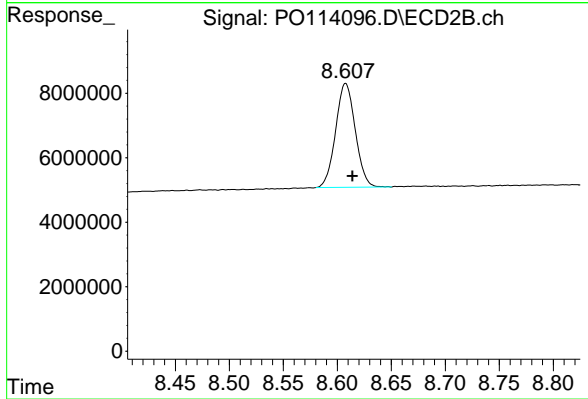
#1 Tetrachloro-m-xylene

R.T.: 3.649 min
 Delta R.T.: -0.002 min
 Response: 94452340
 Conc: 17.68 ng/ml



#2 Decachlorobiphenyl

R.T.: 8.664 min
 Delta R.T.: -0.006 min
 Response: 139010240
 Conc: 20.78 ng/ml



#2 Decachlorobiphenyl

R.T.: 8.608 min
 Delta R.T.: -0.006 min
 Response: 40839220
 Conc: 19.56 ng/ml