

Data Path : Z:\pestpcbsrv\HPCHEM1\ECD\_P\Data\PP092325\  
 Data File : PP075246.D  
 Signal(s) : Signal #1: ECD1A.ch Signal #2: ECD2B.ch  
 Acq On : 23 Sep 2025 08:29  
 Operator : YP\AJ  
 Sample : I.BLK  
 Misc :  
 ALS Vial : 2 Sample Multiplier: 1

Instrument :  
 ECD\_P  
 ClientSampleId :  
 I.BLK

Integration File signal 1: autoint1.e  
 Integration File signal 2: autoint2.e  
 Quant Time: Sep 23 17:44:23 2025  
 Quant Method : Z:\pestpcbsrv\HPCHEM1\ECD\_P\methods\PP092325.M  
 Quant Title : GC EXTRACTABLES  
 QLast Update : Tue Sep 23 17:43:53 2025  
 Response via : Initial Calibration  
 Integrator: ChemStation

Volume Inj. : 2 µl  
 Signal #1 Phase : ZB-MR1 Signal #2 Phase: ZB-MR2  
 Signal #1 Info : 30Mx0.32mmx 0.50µ Signal #2 Info : 30M x 0.32mm x 0.25µm

Compound	RT#1	RT#2	Resp#1	Resp#2	ng/ml	ng/ml
-----						
System Monitoring Compounds						
1) SA Tetrachlo...	4.657	3.797	26080915	109.2E6	19.932	17.901
2) SA Decachlor...	10.437	8.805	19354075	120.9E6	19.402	20.045

Target Compounds

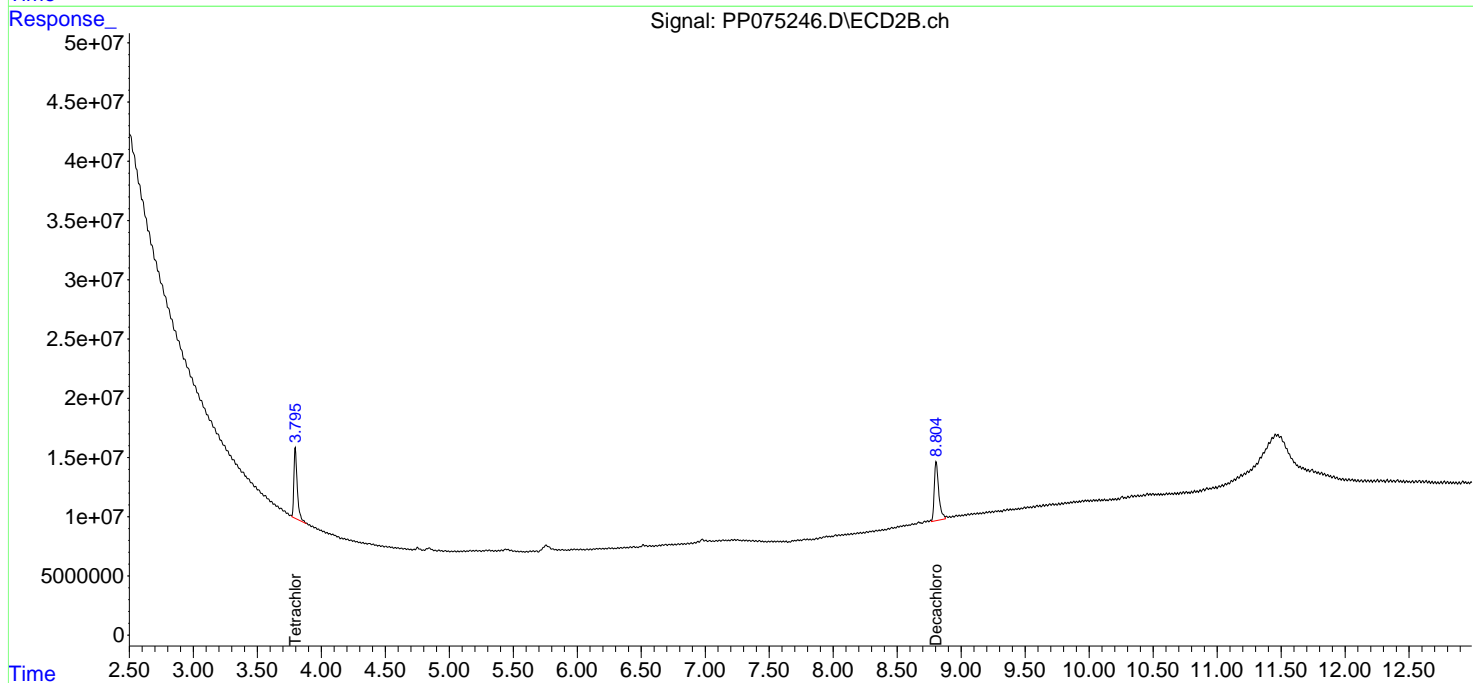
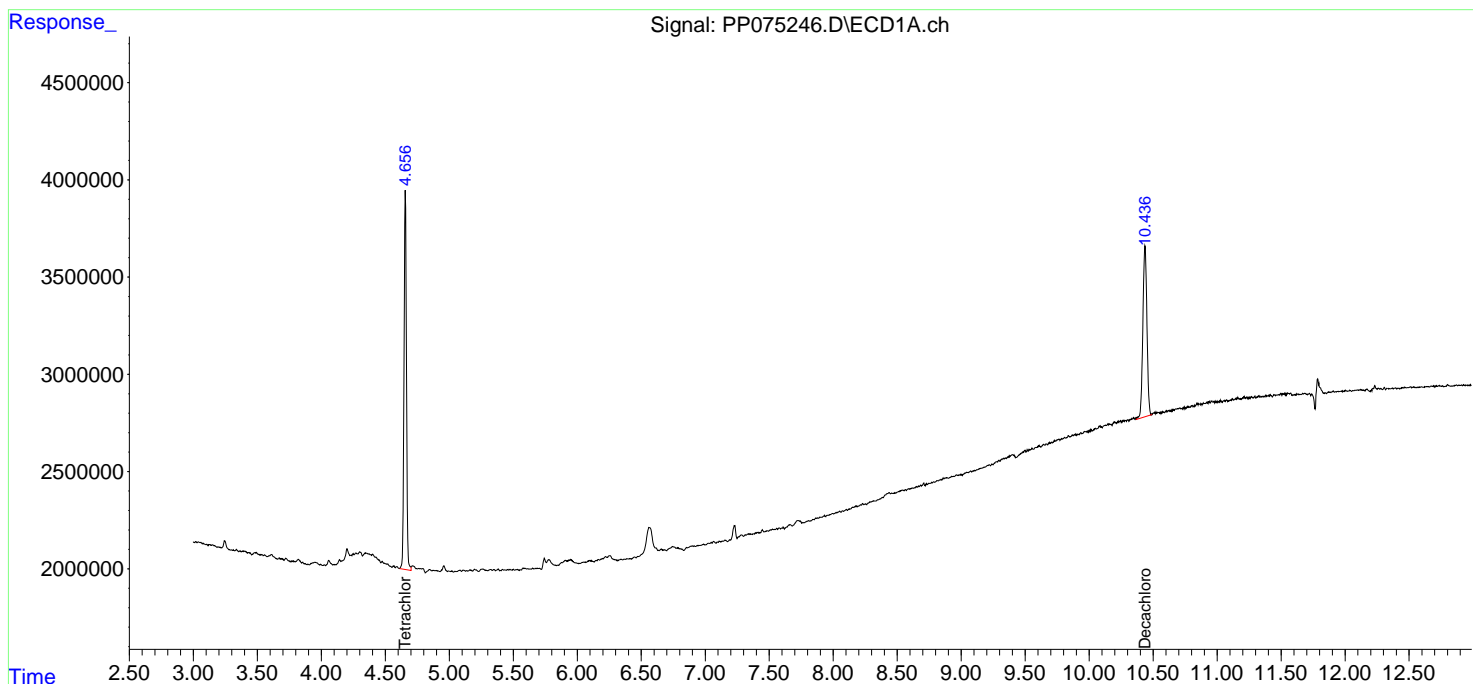
-----  
 (f)=RT Delta > 1/2 Window (#)=Amounts differ by > 25% (m)=manual int.

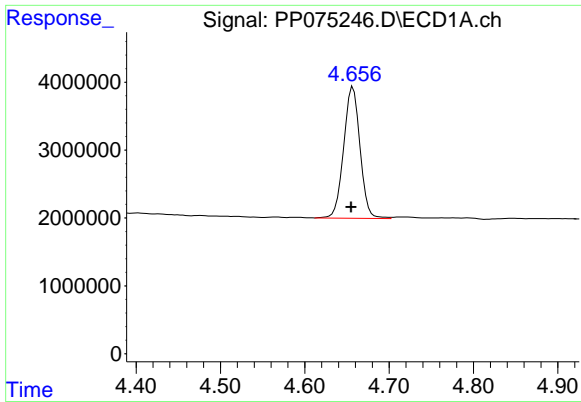
Data Path : Z:\pestpcbsrv\HPCHEM1\ECD\_P\Data\PP092325\  
 Data File : PP075246.D  
 Signal(s) : Signal #1: ECD1A.ch Signal #2: ECD2B.ch  
 Acq On : 23 Sep 2025 08:29  
 Operator : YP\AJ  
 Sample : I.BLK  
 Misc :  
 ALS Vial : 2 Sample Multiplier: 1

Instrument :  
 ECD\_P  
 ClientSampleId :  
 I.BLK

Integration File signal 1: autoint1.e  
 Integration File signal 2: autoint2.e  
 Quant Time: Sep 23 17:44:23 2025  
 Quant Method : Z:\pestpcbsrv\HPCHEM1\ECD\_P\methods\PP092325.M  
 Quant Title : GC EXTRACTABLES  
 QLast Update : Tue Sep 23 17:43:53 2025  
 Response via : Initial Calibration  
 Integrator: ChemStation

Volume Inj. : 2 µl  
 Signal #1 Phase : ZB-MR1 Signal #2 Phase: ZB-MR2  
 Signal #1 Info : 30Mx0.32mmx 0.50µ Signal #2 Info : 30M x 0.32mm x 0.25µm

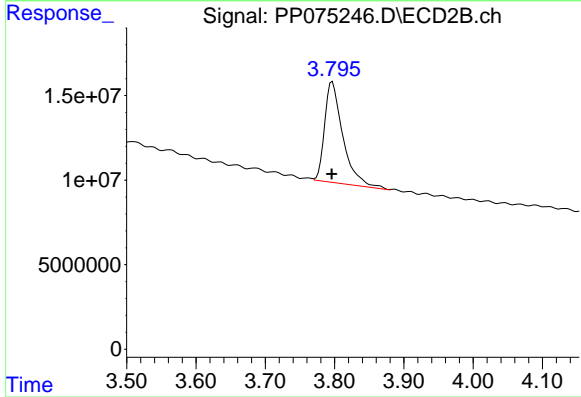




#1 Tetrachloro-m-xylene

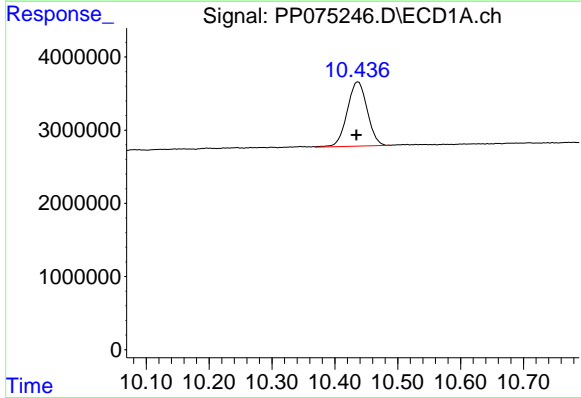
R.T.: 4.657 min  
 Delta R.T.: 0.002 min  
 Response: 26080915  
 Conc: 19.93 ng/ml

Instrument :  
 ECD\_P  
 ClientSampleId :  
 I.BLK



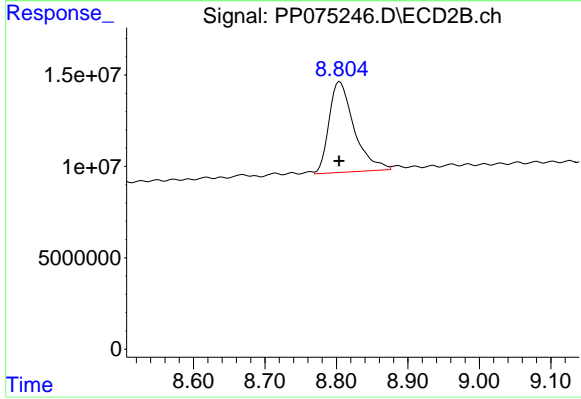
#1 Tetrachloro-m-xylene

R.T.: 3.797 min  
 Delta R.T.: 0.000 min  
 Response: 109213871  
 Conc: 17.90 ng/ml



#2 Decachlorobiphenyl

R.T.: 10.437 min  
 Delta R.T.: 0.003 min  
 Response: 19354075  
 Conc: 19.40 ng/ml



#2 Decachlorobiphenyl

R.T.: 8.805 min  
 Delta R.T.: 0.001 min  
 Response: 120921024  
 Conc: 20.04 ng/ml