

Data Path : Z:\pestpcbsrv\HPCHEM1\ECD\_P\Data\PP092625\  
 Data File : PP075356.D  
 Signal(s) : Signal #1: ECD1A.ch Signal #2: ECD2B.ch  
 Acq On : 26 Sep 2025 12:30  
 Operator : YP\AJ  
 Sample : I.BLK  
 Misc :  
 ALS Vial : 2 Sample Multiplier: 1

Instrument :  
 ECD\_P  
 ClientSampleId :  
 I.BLK

Integration File signal 1: autoint1.e  
 Integration File signal 2: autoint2.e  
 Quant Time: Sep 27 02:03:07 2025  
 Quant Method : Z:\pestpcbsrv\HPCHEM1\ECD\_P\methods\PP092325.M  
 Quant Title : GC EXTRACTABLES  
 QLast Update : Wed Sep 24 10:55:35 2025  
 Response via : Initial Calibration  
 Integrator: ChemStation

Volume Inj. : 2 µl  
 Signal #1 Phase : ZB-MR1 Signal #2 Phase: ZB-MR2  
 Signal #1 Info : 30Mx0.32mmx 0.50µ Signal #2 Info : 30M x 0.32mm x 0.25µm

Compound	RT#1	RT#2	Resp#1	Resp#2	ng/ml	ng/ml
-----						
System Monitoring Compounds						
1) SA Tetrachlo...	4.656	3.797	25709240	103.1E6	19.648	16.898
2) SA Decachlor...	10.442	8.805	19814103	125.9E6	19.863	20.878

Target Compounds

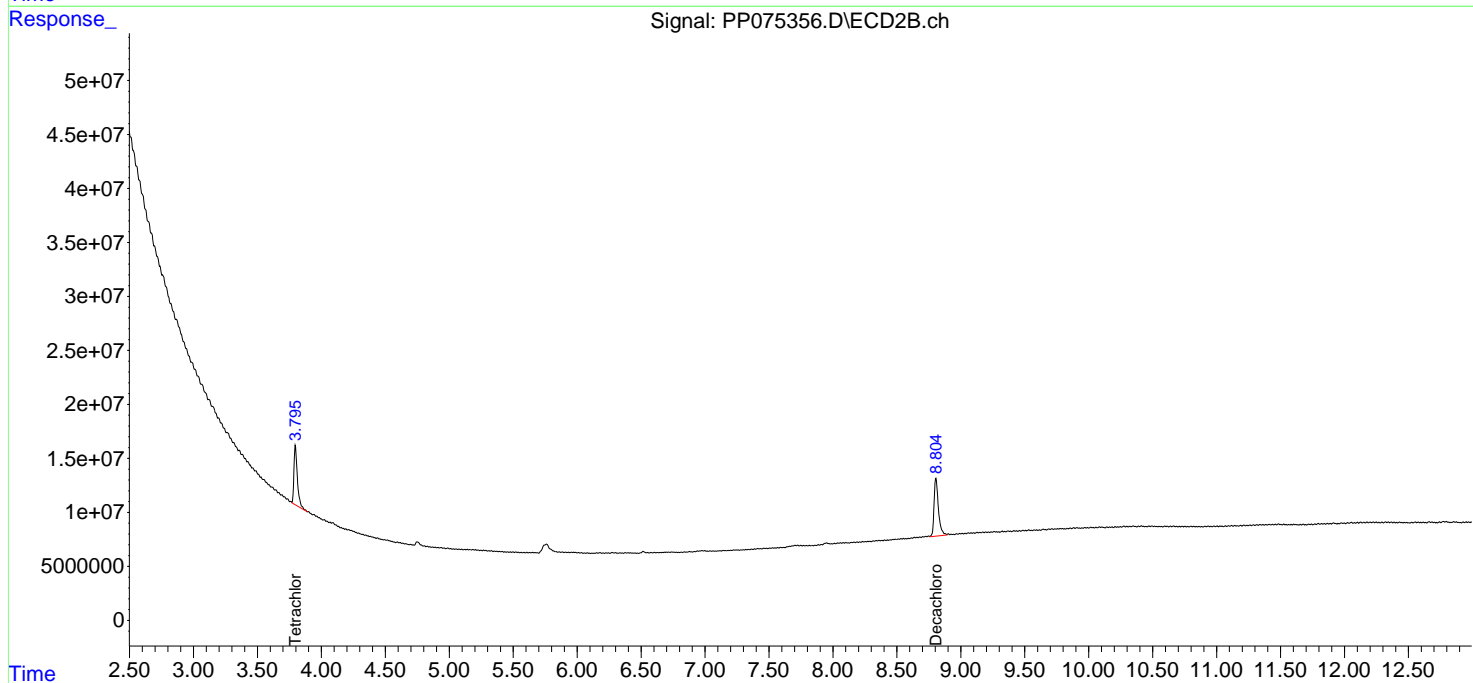
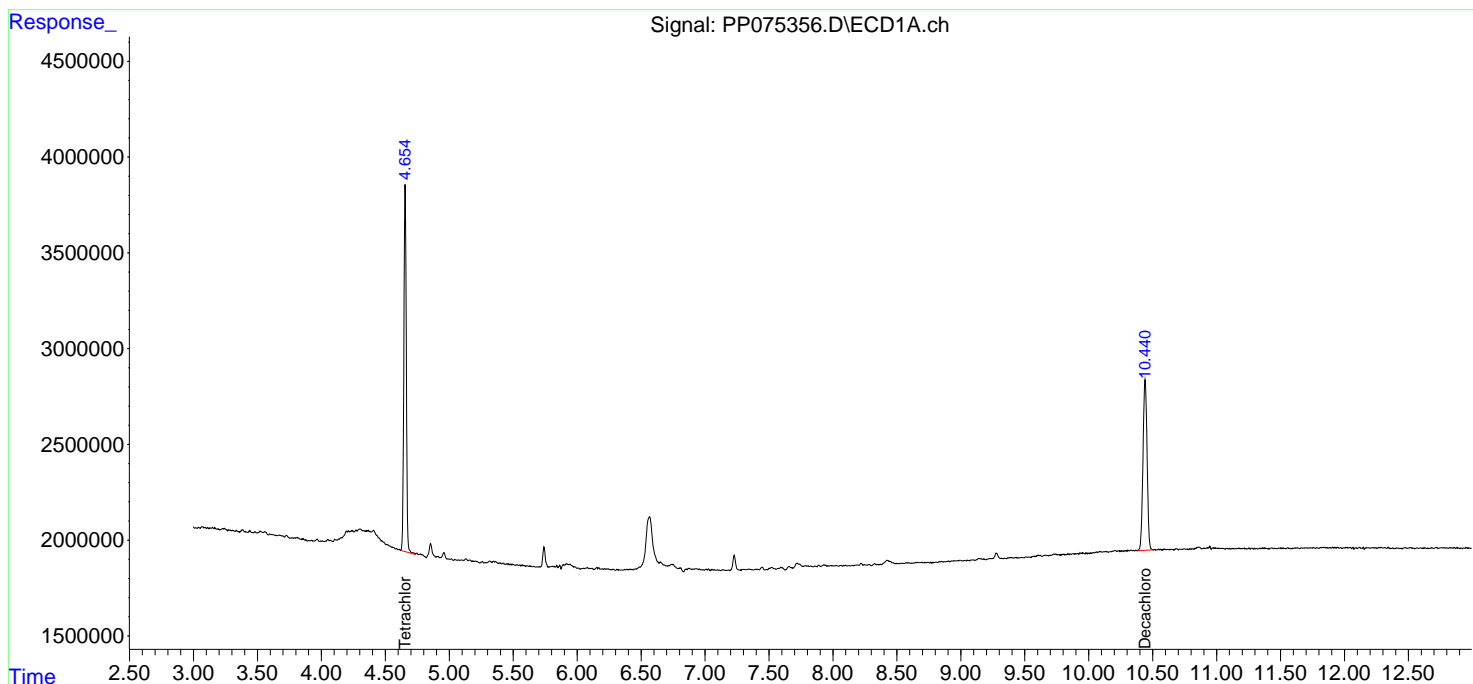
-----  
 (f)=RT Delta > 1/2 Window (#)=Amounts differ by > 25% (m)=manual int.

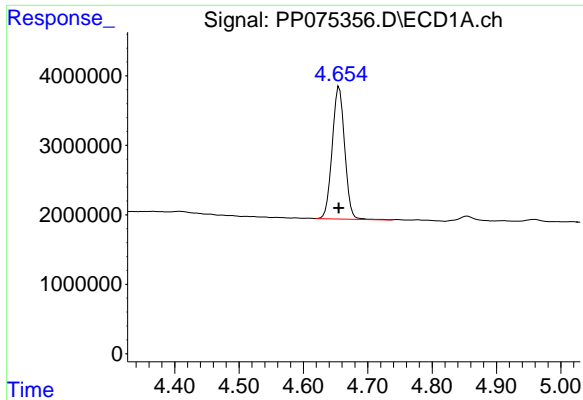
Data Path : Z:\pestpcbsrv\HPCHEM1\ECD\_P\Data\PP092625\  
 Data File : PP075356.D  
 Signal(s) : Signal #1: ECD1A.ch Signal #2: ECD2B.ch  
 Acq On : 26 Sep 2025 12:30  
 Operator : YP\AJ  
 Sample : I.BLK  
 Misc :  
 ALS Vial : 2 Sample Multiplier: 1

Instrument :  
 ECD\_P  
 ClientSampleId :  
 I.BLK

Integration File signal 1: autoint1.e  
 Integration File signal 2: autoint2.e  
 Quant Time: Sep 27 02:03:07 2025  
 Quant Method : Z:\pestpcbsrv\HPCHEM1\ECD\_P\methods\PP092325.M  
 Quant Title : GC EXTRACTABLES  
 QLast Update : Wed Sep 24 10:55:35 2025  
 Response via : Initial Calibration  
 Integrator: ChemStation

Volume Inj. : 2 µl  
 Signal #1 Phase : ZB-MR1 Signal #2 Phase: ZB-MR2  
 Signal #1 Info : 30Mx0.32mmx 0.50µ Signal #2 Info : 30M x 0.32mm x 0.25µm

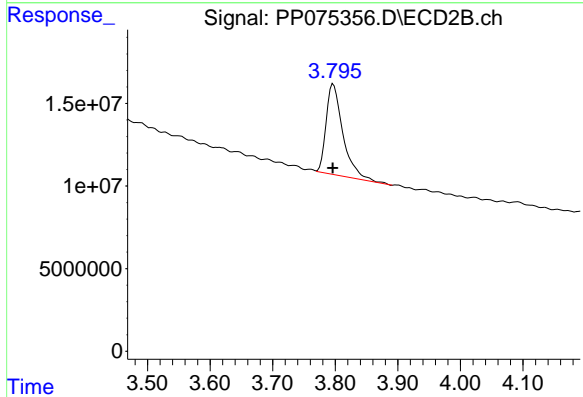




#1 Tetrachloro-m-xylene

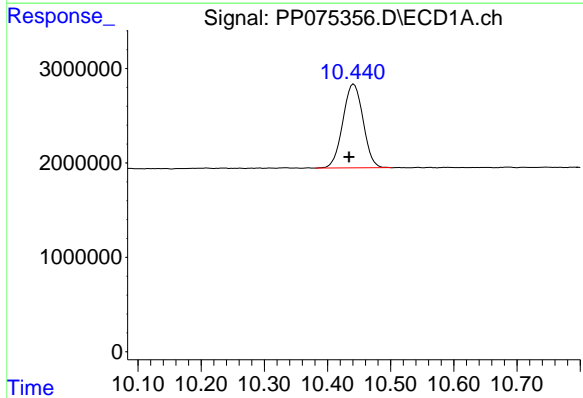
R.T.: 4.656 min  
 Delta R.T.: 0.000 min  
 Response: 25709240  
 Conc: 19.65 ng/ml

Instrument :  
 ECD\_P  
 ClientSampleId :  
 I.BLK



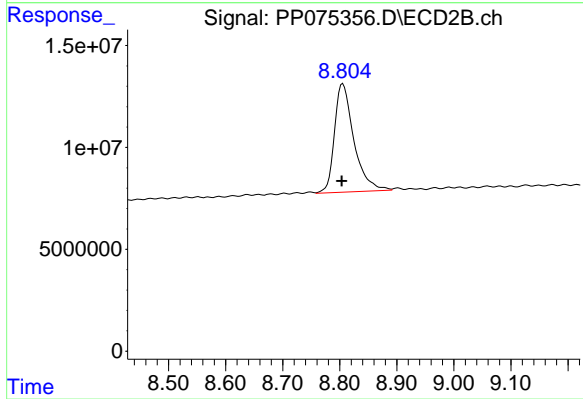
#1 Tetrachloro-m-xylene

R.T.: 3.797 min  
 Delta R.T.: 0.000 min  
 Response: 103093581  
 Conc: 16.90 ng/ml



#2 Decachlorobiphenyl

R.T.: 10.442 min  
 Delta R.T.: 0.007 min  
 Response: 19814103  
 Conc: 19.86 ng/ml



#2 Decachlorobiphenyl

R.T.: 8.805 min  
 Delta R.T.: 0.002 min  
 Response: 125949095  
 Conc: 20.88 ng/ml