

Data Path : Z:\pestpcbsrv\HPCHEM1\ECD_P\Data\PP092625\
 Data File : PP075371.D
 Signal(s) : Signal #1: ECD1A.ch Signal #2: ECD2B.ch
 Acq On : 26 Sep 2025 17:45
 Operator : YP\AJ
 Sample : I.BLK
 Misc :
 ALS Vial : 2 Sample Multiplier: 1

Instrument :
 ECD_P
 ClientSampleId :
 I.BLK

Integration File signal 1: autoint1.e
 Integration File signal 2: autoint2.e
 Quant Time: Sep 27 02:06:38 2025
 Quant Method : Z:\pestpcbsrv\HPCHEM1\ECD_P\methods\PP092325.M
 Quant Title : GC EXTRACTABLES
 QLast Update : Wed Sep 24 10:55:35 2025
 Response via : Initial Calibration
 Integrator: ChemStation

Volume Inj. : 2 µl
 Signal #1 Phase : ZB-MR1 Signal #2 Phase: ZB-MR2
 Signal #1 Info : 30Mx0.32mmx 0.50µ Signal #2 Info : 30M x 0.32mm x 0.25µm

Compound	RT#1	RT#2	Resp#1	Resp#2	ng/ml	ng/ml

System Monitoring Compounds						
1) SA Tetrachlo...	4.660	3.797	25236580	100.3E6	19.287	16.435
2) SA Decachlor...	10.442	8.804	18654599	109.3E6	18.700	18.116

Target Compounds

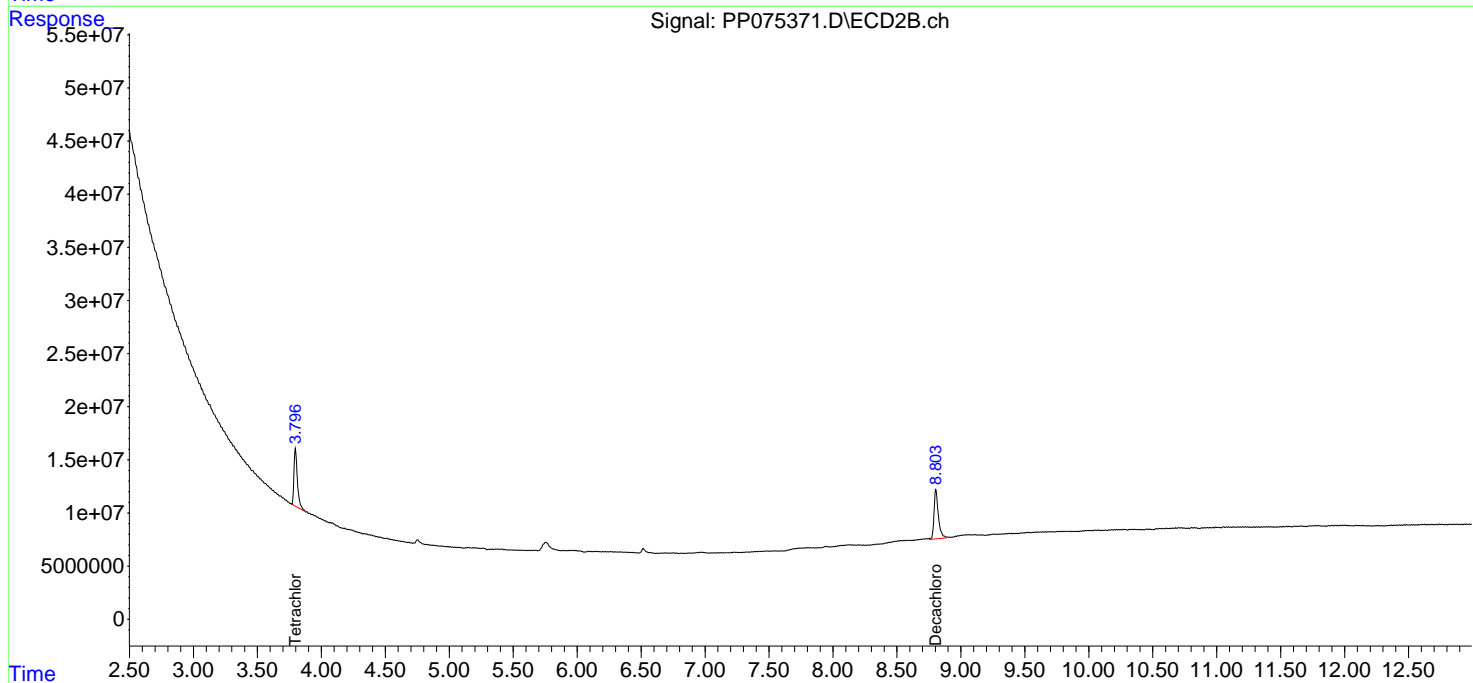
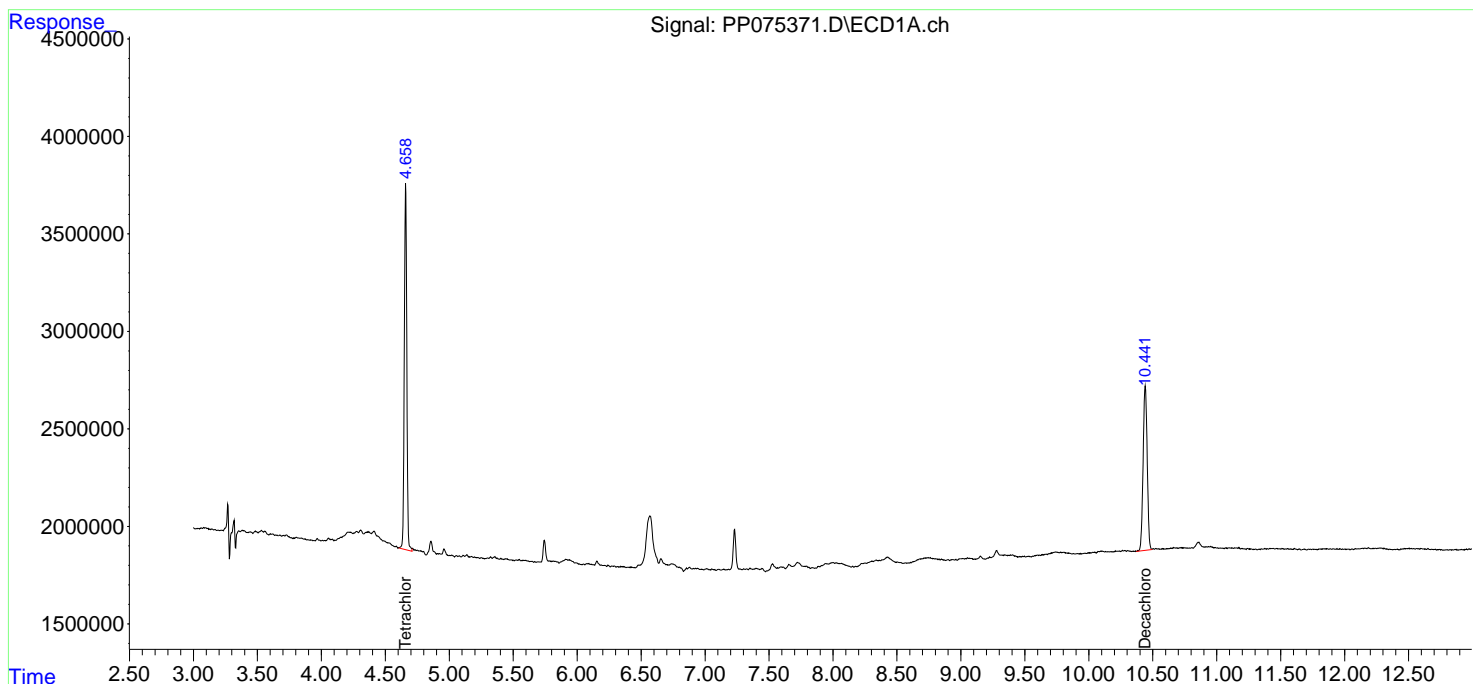
(f)=RT Delta > 1/2 Window (#)=Amounts differ by > 25% (m)=manual int.

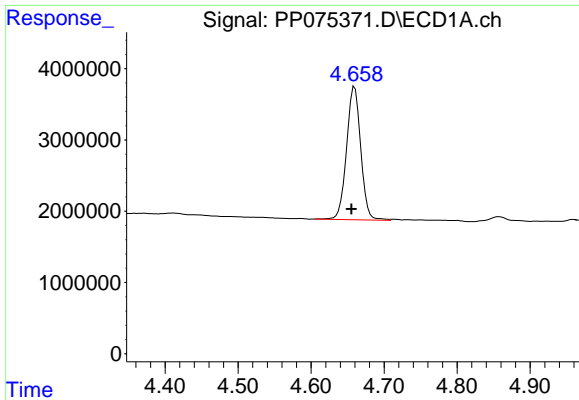
Data Path : Z:\pestpcbsrv\HPCHEM1\ECD_P\Data\PP092625\
 Data File : PP075371.D
 Signal(s) : Signal #1: ECD1A.ch Signal #2: ECD2B.ch
 Acq On : 26 Sep 2025 17:45
 Operator : YP\AJ
 Sample : I.BLK
 Misc :
 ALS Vial : 2 Sample Multiplier: 1

Instrument :
 ECD_P
 ClientSampleId :
 I.BLK

Integration File signal 1: autoint1.e
 Integration File signal 2: autoint2.e
 Quant Time: Sep 27 02:06:38 2025
 Quant Method : Z:\pestpcbsrv\HPCHEM1\ECD_P\methods\PP092325.M
 Quant Title : GC EXTRACTABLES
 QLast Update : Wed Sep 24 10:55:35 2025
 Response via : Initial Calibration
 Integrator: ChemStation

Volume Inj. : 2 µl
 Signal #1 Phase : ZB-MR1 Signal #2 Phase: ZB-MR2
 Signal #1 Info : 30Mx0.32mmx 0.50µ Signal #2 Info : 30M x 0.32mm x 0.25µm

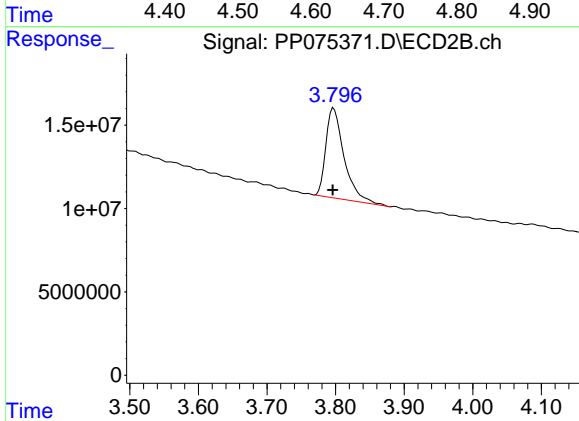




#1 Tetrachloro-m-xylene

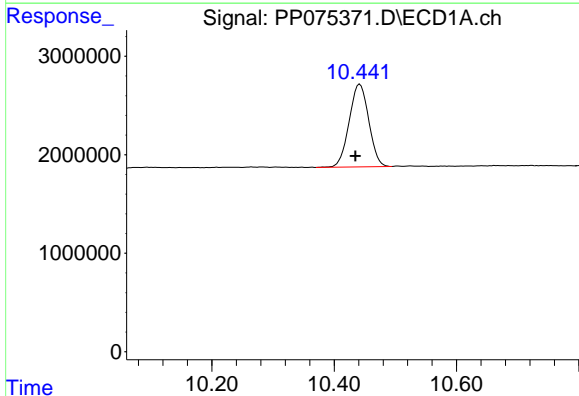
R.T.: 4.660 min
 Delta R.T.: 0.005 min
 Response: 25236580
 Conc: 19.29 ng/ml

Instrument :
 ECD_P
 ClientSampleId :
 I.BLK



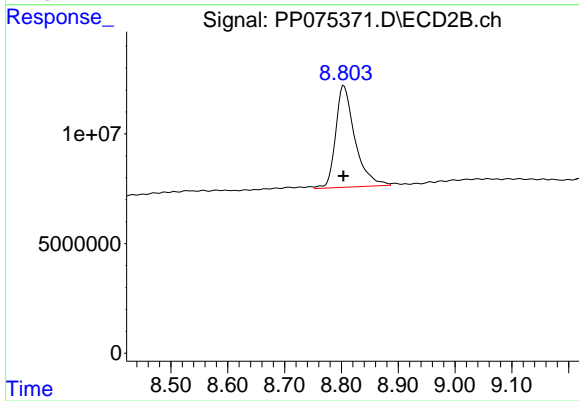
#1 Tetrachloro-m-xylene

R.T.: 3.797 min
 Delta R.T.: 0.001 min
 Response: 100269702
 Conc: 16.44 ng/ml



#2 Decachlorobiphenyl

R.T.: 10.442 min
 Delta R.T.: 0.008 min
 Response: 18654599
 Conc: 18.70 ng/ml



#2 Decachlorobiphenyl

R.T.: 8.804 min
 Delta R.T.: 0.000 min
 Response: 109285063
 Conc: 18.12 ng/ml