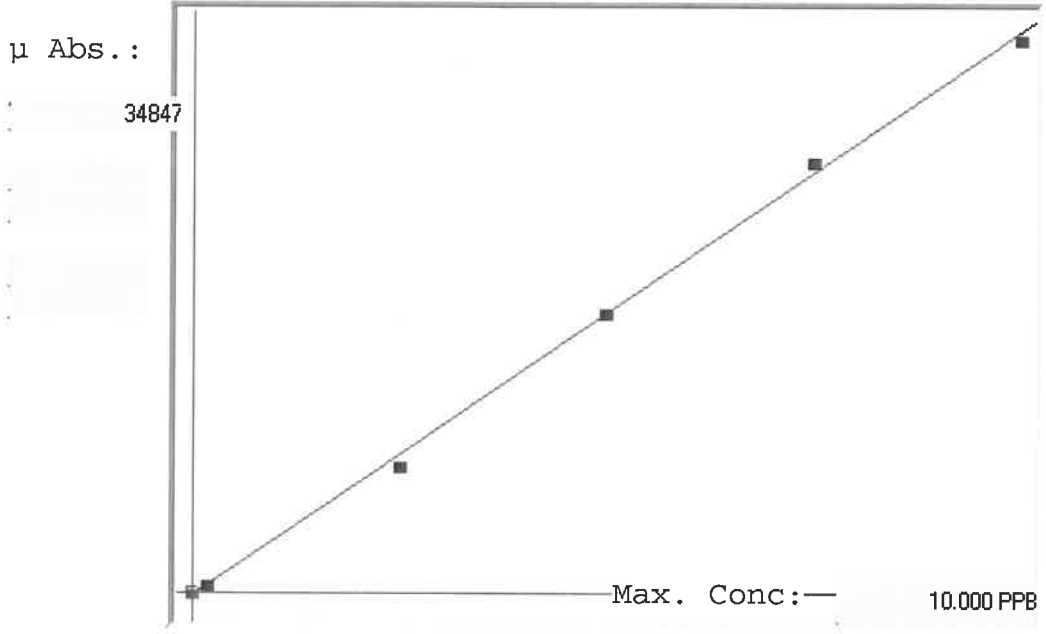


LB137368

7470A

INSTRUMENT ID: CV1

Linear



A= 0.0000e+000
 B= 2.8183e-004
 C= 4.9145e-002
 Rho= 0.9994077
 Accept=Accepted

Std ID	Conc.	Calc.	Dev.	Mean	SD or %RSD	Rep 1	Rep 2	Rep 3	Rep 4	Rep 5
0.0	0.000	0.066	0.066	59	0.000	59	0			
0.2	0.200	0.217	0.017	595	0.0 %	595	0			
2.5	2.500	2.315	-0.185	8039	0.0 %	8039	0			
5.0	5.000	5.033	0.033	17683	0.0 %	17683				
7.5	7.500	7.700	0.200	27146	0.0 %	27146				
10.0	10.000	9.870	-0.130	34847	0.0 %	34847				

LB137368 INSTRUMENT ID : CV1

Method: 7470A Operator: Admin Date of Analysis: 30 Sep 2025 13:58:25

Type	Sample ID	Extended ID	Conc.	µ Abs.	Units	Type	Std Conc	Method	Date
S	0.0 - 1	SB	-	59	PPB	Std	0.0000	7470A	30 Sep 2025 13:58:36
S	0.2 - 1	SB	-	595	PPB	Std	0.2000	7470A	30 Sep 2025 14:00:54
S	2.5 - 1	SB	-	8039	PPB	Std	2.5000	7470A	30 Sep 2025 14:03:11
S	5.0 - 1	SB	-	17683	PPB	Std	5.0000	7470A	30 Sep 2025 14:05:28
S	7.5 - 1	SB	-	27146	PPB	Std	7.5000	7470A	30 Sep 2025 14:07:46
S	10.0 - 1	SB	-	34847	PPB	Std	10.0000	7470A	30 Sep 2025 14:13:05
U	ICV52 - 1	ICV52	4.0373	14151	PPB	SMPL	-7470A		30 Sep 2025 14:16:09
U	ICB52 - 1	ICB52	-0.0072	-200	PPB	SMPL	-7470A		30 Sep 2025 14:18:24
U	CCV62 - 1	CCV62	5.0116	17608	PPB	SMPL	-7470A		30 Sep 2025 14:20:42
U	CCB62 - 1	CCB62	-0.0188	-241	PPB	SMPL	-7470A		30 Sep 2025 14:22:57
U	CRA - 1	CRA	0.2109	574	PPB	SMPL	-7470A		30 Sep 2025 14:25:15
U	HighStd - 1	HighStd	9.7940	34577	PPB	SMPL	-7470A		30 Sep 2025 14:27:29
U	ChkStd - 1	ChkStd	6.8015	23959	PPB	SMPL	-7470A		30 Sep 2025 14:29:45
U	PB169899BL - 1	PBW	-0.0346	-297	PPB	SMPL	-7470A		30 Sep 2025 14:32:08
U	PB169899BS - 1	LCSW	4.3445	15241	PPB	SMPL	-7470A		30 Sep 2025 14:34:28
U	Q3199-01 - 1	ELZ-25-000117	-0.0131	-221	PPB	SMPL	-7470A		30 Sep 2025 14:36:45
U	Q3199-02 - 1	ELZ-25-00098	0.0486	-2	PPB	SMPL	-7470A		30 Sep 2025 14:39:04
U	Q3199-03 - 1	ELZ-25-000111	0.0556	23	PPB	SMPL	-7470A		30 Sep 2025 14:41:21
U	Q3199-04 - 1	ELZ-25-000110	0.0556	23	PPB	SMPL	-7470A		30 Sep 2025 14:43:38
U	Q3199-05 - 1	ELZ-25-000124	0.0607	41	PPB	SMPL	-7470A		30 Sep 2025 14:45:53
U	CCV63 - 1	CCV63	4.9226	17292	PPB	SMPL	-7470A		30 Sep 2025 14:48:08
U	CCB63 - 1	CCB63	-0.0168	-234	PPB	SMPL	-7470A		30 Sep 2025 14:50:23
U	Q3199-06 - 1	ELZ-25-000125	0.0494	1	PPB	SMPL	-7470A		30 Sep 2025 14:52:42
U	Q3199-07 - 1	ELZ-25-00097	0.0491	0	PPB	SMPL	-7470A		30 Sep 2025 14:54:57
U	Q3215-02 - 1	WASTE	0.0511	7	PPB	SMPL	-7470A		30 Sep 2025 14:57:13
U	Q3230-03 - 1	WALL-PROBE-BRICK-1	0.0491	0	PPB	SMPL	-7470A		30 Sep 2025 14:59:28
U	Q3231-04 - 1	WC-1	0.0570	28	PPB	SMPL	-7470A		30 Sep 2025 15:01:44
U	Q3231-08 - 1	WC-2	0.0584	33	PPB	SMPL	-7470A		30 Sep 2025 15:04:00
U	Q3231-12 - 1	WC-3	0.0582	32	PPB	SMPL	-7470A		30 Sep 2025 15:06:16
U	Q3231-16 - 1	WC-4	0.0466	-9	PPB	SMPL	-7470A		30 Sep 2025 15:08:33
U	Q3232-02 - 1	CONC-1	0.0553	22	PPB	SMPL	-7470A		30 Sep 2025 15:10:50
U	Q3233-01 - 1	0926-01	0.0993	178	PPB	SMPL	-7470A		30 Sep 2025 15:13:05
U	CCV64 - 1	CCV64	5.0934	17898	PPB	SMPL	-7470A		30 Sep 2025 15:15:21
U	CCB64 - 1	CCB64	-0.0168	-234	PPB	SMPL	-7470A		30 Sep 2025 15:17:36
U	Q3233-01DUP - 1	0926-01DUP	0.0897	144	PPB	SMPL	-7470A		30 Sep 2025 15:19:55
U	Q3233-01MS - 1	0926-01MS	4.6317	16260	PPB	SMPL	-7470A		30 Sep 2025 15:22:11
U	Q3233-01MSD - 1	0926-01MSD	4.6593	16358	PPB	SMPL	-7470A		30 Sep 2025 15:24:26
U	Q3245-08 - 1	13-1	0.0007	-172	PPB	SMPL	-7470A		30 Sep 2025 15:26:45
U	Q3245-16 - 1	12-8	0.0584	33	PPB	SMPL	-7470A		30 Sep 2025 15:29:10
U	Q3245-24 - 1	12-1	0.0582	32	PPB	SMPL	-7470A		30 Sep 2025 15:31:27
U	PB169870TB - 1	PB169870TB	0.0545	19	PPB	SMPL	-7470A		30 Sep 2025 15:33:43
U	PB169900TB - 1	PB169900TB	0.0556	23	PPB	SMPL	-7470A		30 Sep 2025 15:36:00
U	Q3233-01LX5 - 1		0.0565	26	PPB	SMPL	-7470A		30 Sep 2025 15:38:17
U	Q3233-01A - 1		4.1298	14479	PPB	SMPL	-7470A		30 Sep 2025 15:40:33
U	CCV65 - 1	CCV65	4.8837	17154	PPB	SMPL	-7470A		30 Sep 2025 15:42:48
U	CCB65 - 1	CCB65	-0.0179	-238	PPB	SMPL	-7470A		30 Sep 2025 15:45:07