

LB137376

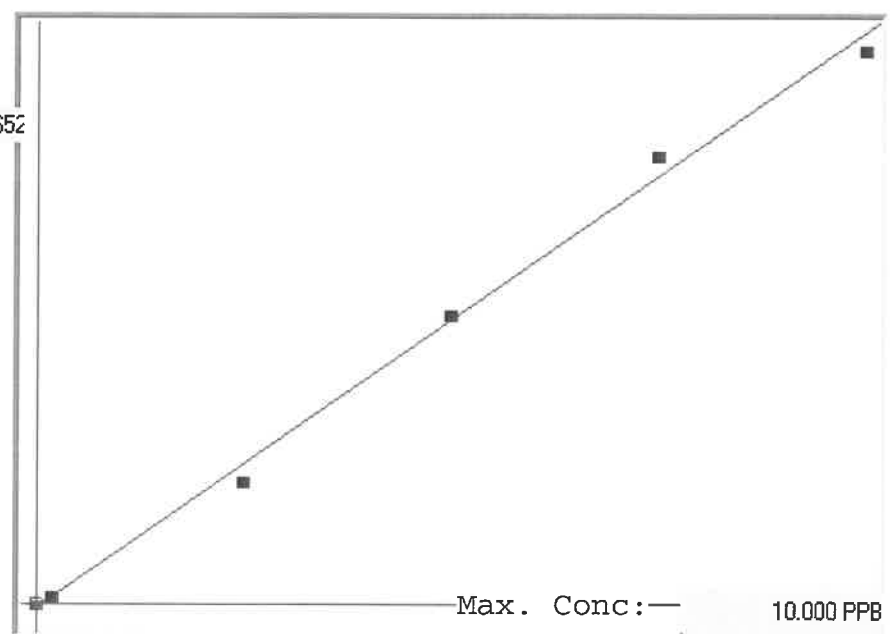
7471B

INSTRUMENT ID: CV1

Linear

μ Abs. :

44652



A= 0.0000e+000  
B= 2.1545e-004  
C= 7.0429e-002  
Rho= 0.9979254  
Accept=Accepted

Std ID	Conc.	Calc.	Dev.	Mean	SD or %RSD	Rep 1	Rep 2	Rep 3	Rep 4	Rep 5
0.0	0.000	0.075	0.075	21	0.000	21				
0.2	0.200	0.215	0.015	671	0.0 %	671				
2.5	2.500	2.223	-0.277	9990	0.0 %	9990				
5.0	5.000	5.112	0.112	23400	0.0 %	23400				
7.5	7.500	7.884	0.384	36268	0.0 %	36268				
10.0	10.000	9.691	-0.309	44652	0.0 %	44652				

# LB137376 INSTRUMENT ID : CV1

Method: 7471B Operator: Admin Date of Analysis: 01 Oct 2025 08:41:04

Type	Sample ID	Extended ID	Conc.	μ Abs.	Units	Type	Std Conc	Method	Date
S	0.0 - 1	50	-	21	PPB	Std	0.0000	7471B	01 Oct 2025 08:51:43
S	0.2 - 1	50.2	-	671	PPB	Std	0.2000	7471B	01 Oct 2025 08:54:07
S	2.5 - 1	52.5	-	9990	PPB	Std	2.5000	7471B	01 Oct 2025 08:56:24
S	5.0 - 1	55	-	23400	PPB	Std	5.0000	7471B	01 Oct 2025 08:58:41
S	7.5 - 1	57.5	-	36268	PPB	Std	7.5000	7471B	01 Oct 2025 09:01:09
S	10.0 - 1	510	-	44652	PPB	Std	10.0000	7471B	01 Oct 2025 09:06:57
U	ICV53 - 1	ICV53	4.1679	19018	PPB	SMPL	-7471B		01 Oct 2025 09:10:13
U	ICB53 - 1	ICB53	0.0284	-195	PPB	SMPL	-7471B		01 Oct 2025 09:12:30
U	CCV67 - 1	CCV67	5.0902	23299	PPB	SMPL	-7471B		01 Oct 2025 09:15:05
U	CCB67 - 1	CCB67	0.0377	-152	PPB	SMPL	-7471B		01 Oct 2025 09:17:21
U	CRA - 1	CRA	0.2200	694	PPB	SMPL	-7471B		01 Oct 2025 09:20:08
U	HighStd - 1	HighStd	9.6802	44603	PPB	SMPL	-7471B		01 Oct 2025 09:22:32
U	ChkStd - 1	ChkStd	7.0375	32337	PPB	SMPL	-7471B		01 Oct 2025 09:24:47
U	PB169927BL - 1	PBS	0.0079	-290	PPB	SMPL	-7471B		01 Oct 2025 09:27:31
U	PB169927BS - 1	LCSS	4.1701	19028	PPB	SMPL	-7471B		01 Oct 2025 09:30:14
U	Q3253-01 - 1	ARS20-0009	0.1853	533	PPB	SMPL	-7471B		01 Oct 2025 09:32:30
U	Q3255-01 - 1	CONCRETE-1-WC	0.2055	627	PPB	SMPL	-7471B		01 Oct 2025 09:35:08
U	Q3256-01 - 1	SOIL-PILE-1-WC	8.4972	39112	PPB	SMPL	-7471B		01 Oct 2025 09:37:25
U	Q3256-05 - 1	SOIL-PILE-2-WC	11.0419	50923	PPB	SMPL	-7471B		01 Oct 2025 09:39:42
U	Q3257-01 - 1	ENV1-6FT	0.6213	2557	PPB	SMPL	-7471B		01 Oct 2025 09:42:27
U	CCV68 - 1	CCV68	5.1243	23457	PPB	SMPL	-7471B		01 Oct 2025 09:45:15
U	CCB68 - 1	CCB68	0.0181	-243	PPB	SMPL	-7471B		01 Oct 2025 09:47:33
U	Q3257-02 - 1	ENV2-6FT	0.0913	97	PPB	SMPL	-7471B		01 Oct 2025 09:50:10
U	Q3257-02DUP - 1	ENV2-6FTDUP	0.0883	83	PPB	SMPL	-7471B		01 Oct 2025 09:52:25
U	Q3257-02MS - 1	ENV2-6FTMS	4.1741	19047	PPB	SMPL	-7471B		01 Oct 2025 09:54:40
U	Q3257-02MSD - 1	ENV2-6FTMSD	4.2452	19377	PPB	SMPL	-7471B		01 Oct 2025 09:56:56
U	Q3257-02LX5 - 1		0.0006	-324	PPB	SMPL	-7471B		01 Oct 2025 09:59:32
U	Q3257-02A - 1		4.2177	19249	PPB	SMPL	-7471B		01 Oct 2025 10:02:10
U	Q3256-05DLX2 - 1		5.9820	27438	PPB	SMPL	-7471B		01 Oct 2025 10:04:26
U	CCV69 - 1	CCV69	5.0530	23126	PPB	SMPL	-7471B		01 Oct 2025 10:07:03
U	CCB69 - 1	CCB69	0.0226	-222	PPB	SMPL	-7471B		01 Oct 2025 10:09:44