

LB137412

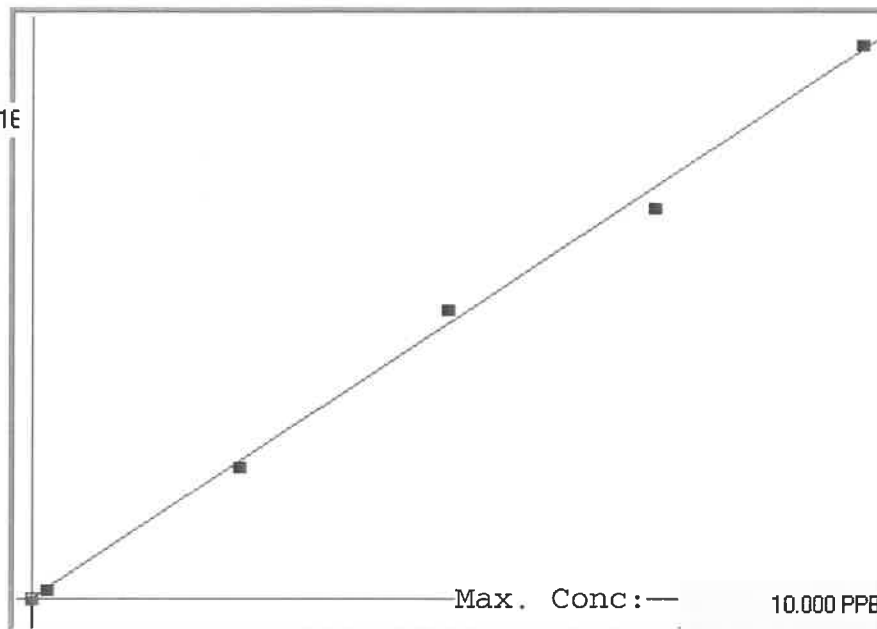
7470A

INSTRUMENT ID: CV1

Linear

μ Abs. :

39216



A= 0.0000e+000

B= 2.5777e-004

C= -2.3498e-003

Rho= 0.9986439

Accept=Accepted

Std ID	Conc.	Calc.	Dev.	Mean	SD or %RSD	Rep 1	Rep 2	Rep 3	Rep 4	Rep 5	O/O D
0.0	0.000	0.010	0.010	48	0.000	48	0				-
0.2	0.200	0.199	-0.001	783	0.0 %	783	0				-1
2.5	2.500	2.436	-0.064	9461	0.0 %	9461	0				-2
5.0	5.000	5.294	0.294	20545	0.0 %	20545					-6
7.5	7.500	7.154	-0.346	27762	0.0 %	27762					-5
10.0	10.000	10.106	0.106	39216	0.0 %	39216					1

LB137412 INSTRUMENT ID : CV1

Method: 7470A Operator: Admin Date of Analysis: 03 Oct 2025 10:56:23

Type	Sample ID	Extended ID	Conc.	µ Abs.	Units	Type	Std Conc	Method	Date
S	0.0 - 1	50	-	48	PPB	Std	0.0000	7470A	03 Oct 2025 10:56:56
S	0.2 - 1	50.2	-	783	PPB	Std	0.2000	7470A	03 Oct 2025 10:59:14
S	2.5 - 1	52.5	-	9461	PPB	Std	2.5000	7470A	03 Oct 2025 11:01:31
S	5.0 - 1	55	-	20545	PPB	Std	5.0000	7470A	03 Oct 2025 11:03:48
S	7.5 - 1	57.5	-	27762	PPB	Std	7.5000	7470A	03 Oct 2025 11:06:07
S	10.0 - 1	516	-	39216	PPB	Std	10.0000	7470A	03 Oct 2025 11:08:26
U	ICV58 - 1	ICV58	4.1050	15934	PPB	SMPL	-7470A		03 Oct 2025 11:12:03
U	ICB58 - 1	ICB58	-0.0526	-195	PPB	SMPL	-7470A		03 Oct 2025 11:14:18
U	CCV80 - 1	CCV80	5.2593	20412	PPB	SMPL	-7470A		03 Oct 2025 11:16:36
U	CCB80 - 1	CCB80	-0.0864	-326	PPB	SMPL	-7470A		03 Oct 2025 11:18:50
U	CRA - 1	CRA	0.1809	711	PPB	SMPL	-7470A		03 Oct 2025 11:21:09
U	HighStd - 1	HighStd	10.0694	39072	PPB	SMPL	-7470A		03 Oct 2025 11:23:24
U	ChkStd - 1	ChkStd	6.6722	25893	PPB	SMPL	-7470A		03 Oct 2025 11:32:07
U	PB169961BL - 1	PBW	-0.0681	-255	PPB	SMPL	-7470A		03 Oct 2025 11:34:22
U	PB169961BS - 1	LCSW	4.1014	15920	PPB	SMPL	-7470A		03 Oct 2025 11:36:46
U	Q3018-07 - 1	WP0925-PT-HG-WP	23.4826	91107	PPB	SMPL	-7470A		03 Oct 2025 11:39:02
U	Q3241-02 - 1	92225	-0.0637	-238	PPB	SMPL	-7470A		03 Oct 2025 11:41:21
U	Q3252-05 - 1	AUD-25-0161	-0.0614	-229	PPB	SMPL	-7470A		03 Oct 2025 11:43:57
U	Q3252-05DUP - 1	AUD-25-0161DUP	-0.0042	-7	PPB	SMPL	-7470A		03 Oct 2025 11:46:14
U	Q3252-05MS - 1	AUD-25-0161MS	3.6588	14203	PPB	SMPL	-7470A		03 Oct 2025 11:48:30
U	CCV81 - 1	CCV81	5.2271	20287	PPB	SMPL	-7470A		03 Oct 2025 11:50:45
U	CCB81 - 1	CCB81	-0.0774	-291	PPB	SMPL	-7470A		03 Oct 2025 11:53:03
U	Q3252-05MSD - 1	AUD-25-0161MSD	3.8459	14929	PPB	SMPL	-7470A		03 Oct 2025 11:55:22
U	Q3258-06 - 1	COMPOSITE	2.8548	11084	PPB	SMPL	-7470A		03 Oct 2025 11:57:37
U	Q3260-02 - 1	COMP	0.0871	347	PPB	SMPL	-7470A		03 Oct 2025 11:59:56
U	Q3263-01 - 1	251818	-0.0874	-330	PPB	SMPL	-7470A		03 Oct 2025 12:02:15
U	Q3263-02 - 1	266380	-0.0026	-1	PPB	SMPL	-7470A		03 Oct 2025 12:04:32
U	Q3252-05LX5 - 1		-0.2050	-786	PPB	SMPL	-7470A		03 Oct 2025 12:16:21
U	Q3252-05A - 1		4.0916	15882	PPB	SMPL	-7470A		03 Oct 2025 12:18:51
U	Q3018-07DLX5 - 1	WP0925-PT-HG-WP	4.7979	18622	PPB	SMPL	-7470A		03 Oct 2025 12:26:21
U	CCV82 - 1	CCV82	4.5324	17592	PPB	SMPL	-7470A		03 Oct 2025 12:35:31
U	CCB82 - 1	CCB82	-0.0214	-74	PPB	SMPL	-7470A		03 Oct 2025 12:40:28