

LB137441

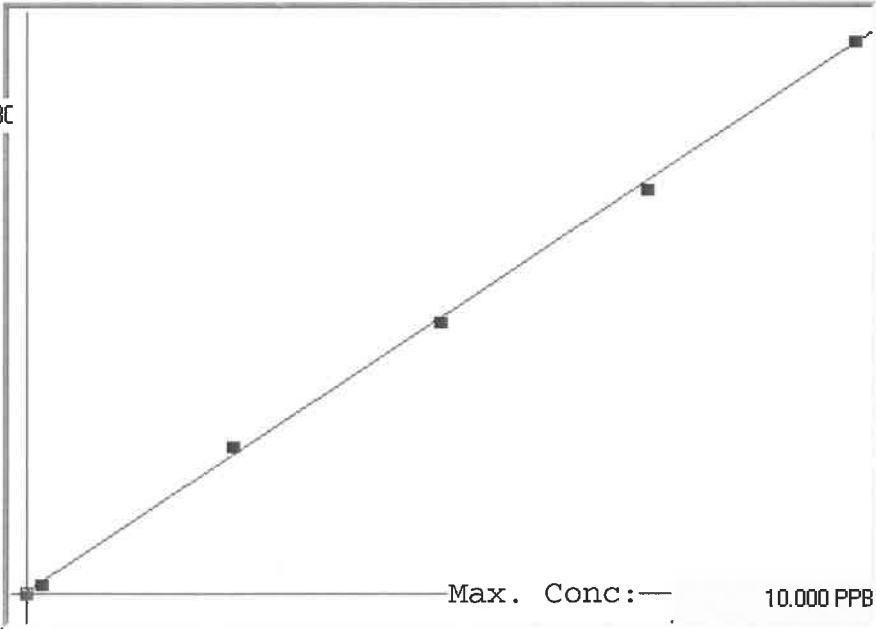
7470A

INSTRUMENT ID: CV1

Linear

μ Abs. :

42780



A= 0.0000e+000

B= 2.3598e-004

C= -2.5824e-002

Rho= 0.9996400

Accept=Accepted

Std ID	Conc.	Calc.	Dev.	Mean	SD or %RSD	Rep 1	Rep 2	Rep 3	Rep 4	Rep 5
0.0	0.000	-0.039	-0.039	-55	0.000	-55	0			
0.2	0.200	0.166	-0.034	811	0.0 %	811	0			
2.5	2.500	2.681	0.181	11472	0.0 %	11472	0			
5.0	5.000	4.947	-0.053	21074	0.0 %	21074				
7.5	7.500	7.375	-0.125	31362	0.0 %	31362				
10.0	10.000	10.070	0.070	42780	0.0 %	42780				

# LB137441 INSTRUMENT ID : CV1

Method: 7470A		Operator: Admin		Date of Analysis: 07 Oct 2025 09:37:00					
Type	Sample ID	Extended ID	Conc.	μ Abs.	Units	Type	Std Conc	Method	Date
S	0.0 - 1	S#	-	-55	PPB	Std	0.0000	7470A	07 Oct 2025 09:47:28
S	0.2 - 1	S1-2	-	811	PPB	Std	0.2000	7470A	07 Oct 2025 09:49:45
S	2.5 - 1	S2-5	-	11472	PPB	Std	2.5000	7470A	07 Oct 2025 09:52:02
S	5.0 - 1	S5	-	21074	PPB	Std	5.0000	7470A	07 Oct 2025 09:54:19
S	7.5 - 1	S7-5	-	31362	PPB	Std	7.5000	7470A	07 Oct 2025 09:56:38
S	10.0 - 1	S10	-	42780	PPB	Std	10.0000	7470A	07 Oct 2025 10:01:44
U	ICV61 - 1	ICV61	3.7884	16163	PPB	SMPL	-7470A		07 Oct 2025 10:04:44
U	ICB61 - 1	ICB61	-0.0843	-248	PPB	SMPL	-7470A		07 Oct 2025 10:06:59
U	CCV90 - 1	CCV90	4.9277	20991	PPB	SMPL	-7470A		07 Oct 2025 10:09:17
U	CCB90 - 1	CCB90	-0.0895	-270	PPB	SMPL	-7470A		07 Oct 2025 10:11:32
U	CRA - 1	CRA	0.1847	892	PPB	SMPL	-7470A		07 Oct 2025 10:13:52
U	HighStd - 1	HighStd	10.0650	42761	PPB	SMPL	-7470A		07 Oct 2025 10:16:07
U	ChkStd - 1	ChkStd	6.6919	28467	PPB	SMPL	-7470A		07 Oct 2025 10:23:57
U	PB169997BL - 1	PBW	-0.0633	-159	PPB	SMPL	-7470A		07 Oct 2025 10:26:13
U	PB169997BS - 1	LCSW	4.1010	17488	PPB	SMPL	-7470A		07 Oct 2025 10:31:17
U	Q3262-03 - 1	MOO-25-0280	-0.1020	-323	PPB	SMPL	-7470A		07 Oct 2025 10:33:34
U	Q3262-06 - 1	MOO-25-0281-82	-0.0386	-54	PPB	SMPL	-7470A		07 Oct 2025 10:35:54
U	Q3262-09 - 1	279887	-0.0315	-24	PPB	SMPL	-7470A		07 Oct 2025 10:38:11
U	Q3269-03 - 1	EG1-TP1	-0.0218	17	PPB	SMPL	-7470A		07 Oct 2025 10:40:29
U	Q3269-06 - 1	EG1-TP2	-0.0251	3	PPB	SMPL	-7470A		07 Oct 2025 10:43:09
U	CCV91 - 1	CCV91	4.8772	20777	PPB	SMPL	-7470A		07 Oct 2025 10:45:32
U	CCB91 - 1	CCB91	-0.0891	-268	PPB	SMPL	-7470A		07 Oct 2025 10:47:48
U	Q3277-02 - 1	WC1	-0.0258	0	PPB	SMPL	-7470A		07 Oct 2025 10:50:06
U	Q3287-02 - 1	TSS-25-0001-0002	0.0629	376	PPB	SMPL	-7470A		07 Oct 2025 10:52:21
U	Q3289-02 - 1	VNJ-240	-0.0379	-51	PPB	SMPL	-7470A		07 Oct 2025 10:54:37
U	Q3289-04 - 1	VNJ-261	-0.0275	-7	PPB	SMPL	-7470A		07 Oct 2025 10:56:53
U	Q3289-06 - 1	72-11966	-0.0223	15	PPB	SMPL	-7470A		07 Oct 2025 10:59:08
U	Q3289-06DUP - 1	72-11966DUP	-0.0199	25	PPB	SMPL	-7470A		07 Oct 2025 11:01:24
U	Q3289-06MS - 1	72-11966MS	4.1799	17822	PPB	SMPL	-7470A		07 Oct 2025 11:03:41
U	Q3289-06MSD - 1	72-11966MSD	4.2764	18231	PPB	SMPL	-7470A		07 Oct 2025 11:05:58
U	PB170005BL - 1	PBW	-0.0603	-146	PPB	SMPL	-7470A		07 Oct 2025 11:09:06
U	PB170005BS - 1	LCSW	3.7903	16171	PPB	SMPL	-7470A		07 Oct 2025 11:11:32
U	CCV92 - 1	CCV92	4.5664	19460	PPB	SMPL	-7470A		07 Oct 2025 11:13:48
U	CCB92 - 1	CCB92	-0.0898	-271	PPB	SMPL	-7470A		07 Oct 2025 11:16:06
U	Q3291-05 - 1	MC0AX0	-0.0065	82	PPB	SMPL	-7470A		07 Oct 2025 11:18:26
U	Q3291-05DUP - 1	MC0AX0DUP	-0.0213	19	PPB	SMPL	-7470A		07 Oct 2025 11:20:42
U	Q3291-05MS - 1	MC0AX0MS	3.8375	16371	PPB	SMPL	-7470A		07 Oct 2025 11:22:57
U	Q3291-05MSD - 1	MC0AX0MSD	3.2921	14060	PPB	SMPL	-7470A		07 Oct 2025 11:25:14
U	Q3291-06 - 1	MC0AX1	-0.0808	-233	PPB	SMPL	-7470A		07 Oct 2025 11:27:33
U	Q3291-07 - 1	MC0AX2	-0.0242	7	PPB	SMPL	-7470A		07 Oct 2025 11:29:52
U	Q3291-08 - 1	MC0AX3	-0.0220	16	PPB	SMPL	-7470A		07 Oct 2025 11:32:09
U	CCV93 - 1	CCV93	4.7396	20194	PPB	SMPL	-7470A		07 Oct 2025 11:37:17
U	CCB93 - 1	CCB93	-0.0782	-222	PPB	SMPL	-7470A		07 Oct 2025 11:39:33
U	PB169971TB - 1		-0.0298	-17	PPB	SMPL	-7470A		07 Oct 2025 11:41:54
U	Q3289-06LX5 - 1		-0.0220	16	PPB	SMPL	-7470A		07 Oct 2025 11:44:10
U	Q3289-06A - 1		3.6142	15425	PPB	SMPL	-7470A		07 Oct 2025 11:46:25
U	Q3291-05LX5 - 1		-0.0664	-172	PPB	SMPL	-7470A		07 Oct 2025 11:48:41
U	Q3291-05A - 1		3.6277	15482	PPB	SMPL	-7470A		07 Oct 2025 11:50:59
U	CCV94 - 1	CCV94	4.8361	20603	PPB	SMPL	-7470A		07 Oct 2025 11:53:15
U	CCB94 - 1	CCB94	-0.0461	-86	PPB	SMPL	-7470A		07 Oct 2025 11:57:43