

Data Path : Z:\pestpcbsrv\HPCHEM1\ECD_P\Data\PP101525\
 Data File : PP075805.D
 Signal(s) : Signal #1: ECD1A.ch Signal #2: ECD2B.ch
 Acq On : 15 Oct 2025 16:51
 Operator : YP\AJ
 Sample : I.BLK
 Misc :
 ALS Vial : 2 Sample Multiplier: 1

Instrument :
 ECD_P
 ClientSampleId :
 I.BLK

Integration File signal 1: autoint1.e
 Integration File signal 2: autoint2.e
 Quant Time: Oct 16 01:56:41 2025
 Quant Method : Z:\pestpcbsrv\HPCHEM1\ECD_P\methods\PP092325.M
 Quant Title : GC EXTRACTABLES
 QLast Update : Wed Sep 24 10:55:35 2025
 Response via : Initial Calibration
 Integrator: ChemStation

Volume Inj. : 2 µl
 Signal #1 Phase : ZB-MR1 Signal #2 Phase: ZB-MR2
 Signal #1 Info : 30Mx0.32mmx 0.50µ Signal #2 Info : 30M x 0.32mm x 0.25µm

| Compound | RT#1 | RT#2 | Resp#1 | Resp#2 | ng/ml | ng/ml |
|-----------------------------|--------|-------|----------|---------|--------|--------|
| ----- | | | | | | |
| System Monitoring Compounds | | | | | | |
| 1) SA Tetrachlo... | 4.652 | 3.790 | 27758256 | 111.1E6 | 21.214 | 18.217 |
| 2) SA Decachlor... | 10.431 | 8.792 | 20047124 | 128.0E6 | 20.096 | 21.226 |

Target Compounds

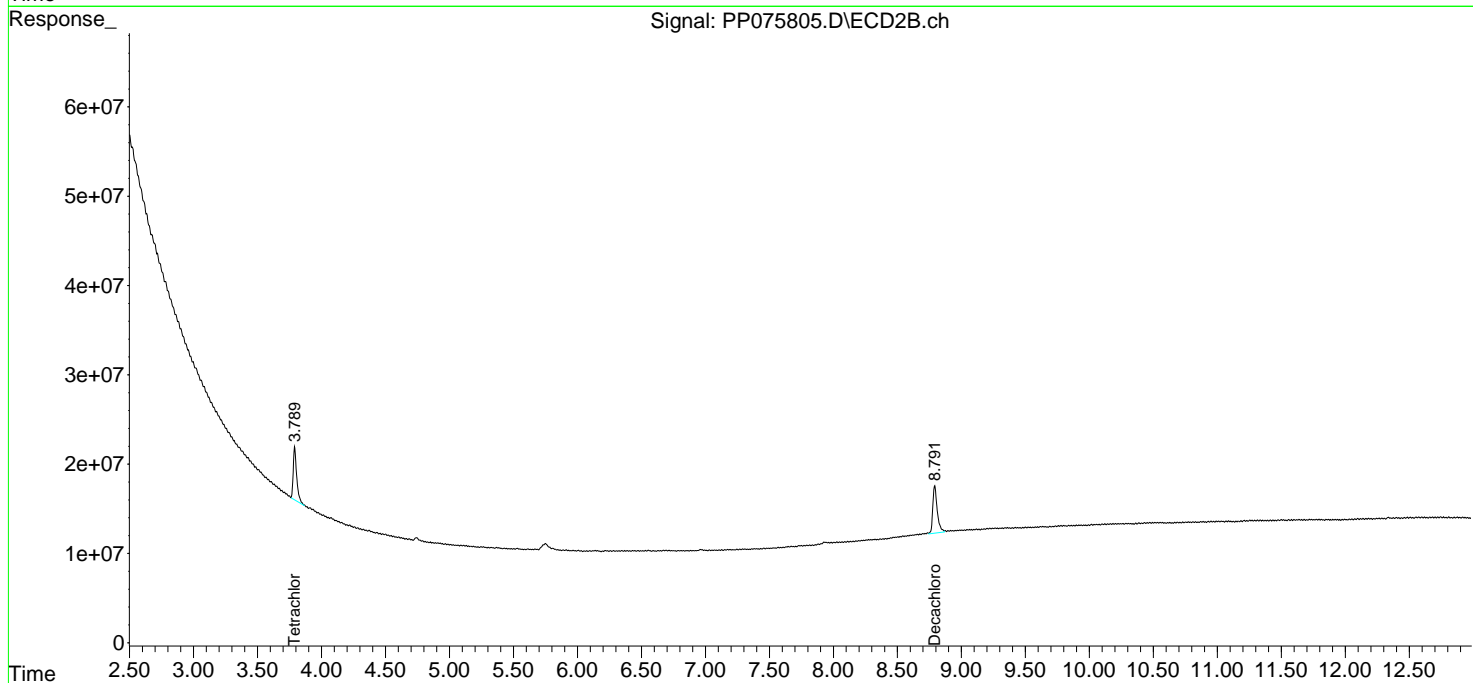
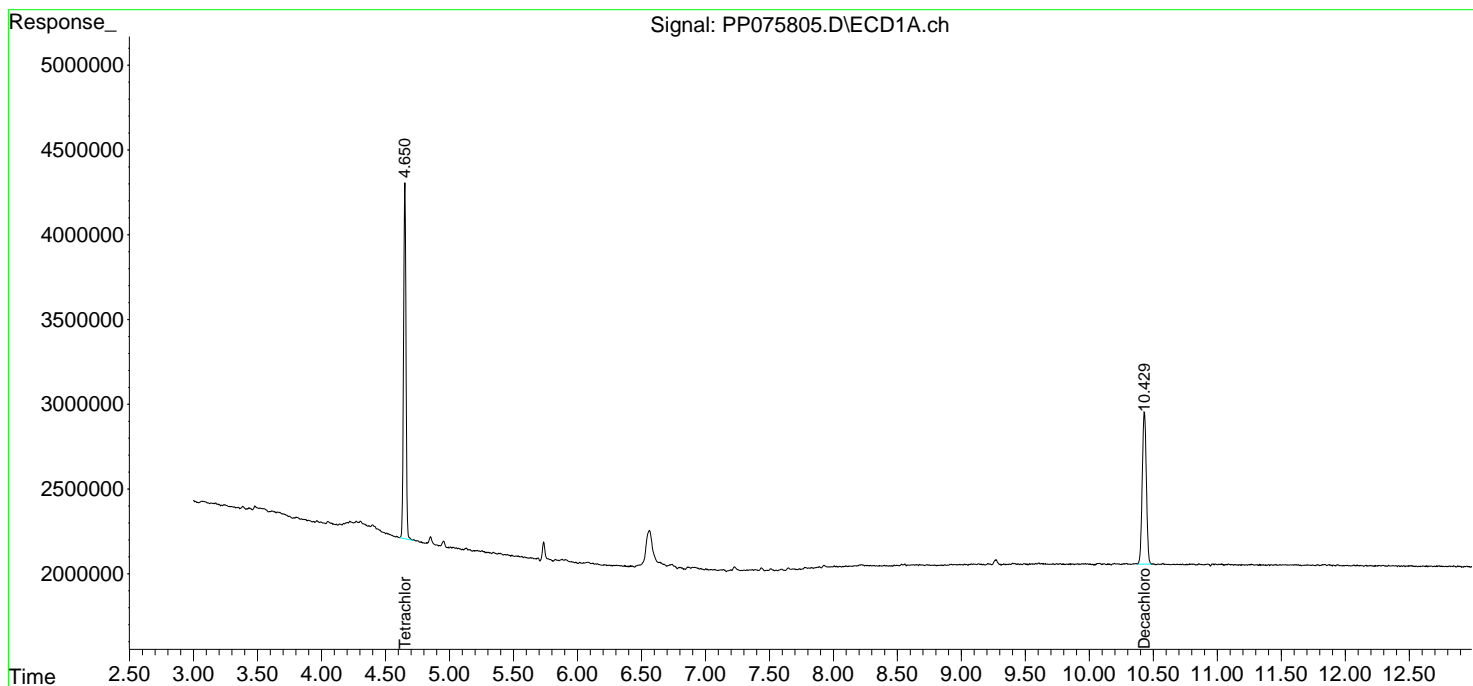
(f)=RT Delta > 1/2 Window (#)=Amounts differ by > 25% (m)=manual int.

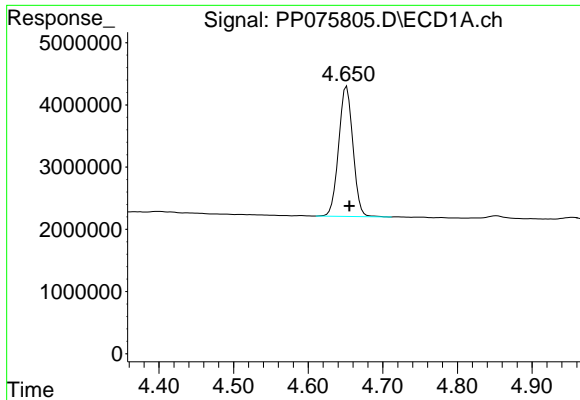
Data Path : Z:\pestpcbsrv\HPCHEM1\ECD_P\Data\PP101525\
 Data File : PP075805.D
 Signal(s) : Signal #1: ECD1A.ch Signal #2: ECD2B.ch
 Acq On : 15 Oct 2025 16:51
 Operator : YP\AJ
 Sample : I.BLK
 Misc :
 ALS Vial : 2 Sample Multiplier: 1

Instrument :
 ECD_P
 ClientSampleId :
 I.BLK

Integration File signal 1: autoint1.e
 Integration File signal 2: autoint2.e
 Quant Time: Oct 16 01:56:41 2025
 Quant Method : Z:\pestpcbsrv\HPCHEM1\ECD_P\methods\PP092325.M
 Quant Title : GC EXTRACTABLES
 QLast Update : Wed Sep 24 10:55:35 2025
 Response via : Initial Calibration
 Integrator: ChemStation

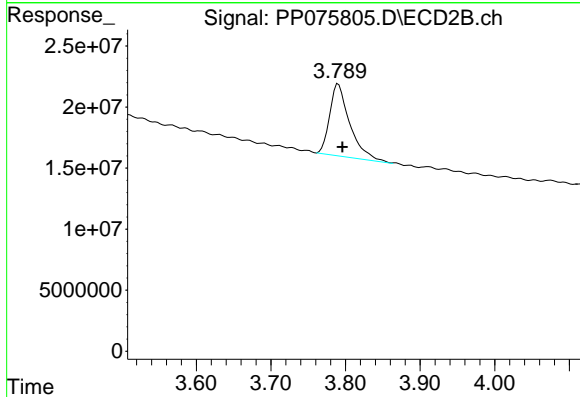
Volume Inj. : 2 µl
 Signal #1 Phase : ZB-MR1 Signal #2 Phase: ZB-MR2
 Signal #1 Info : 30Mx0.32mmx 0.50µ Signal #2 Info : 30M x 0.32mm x 0.25µm



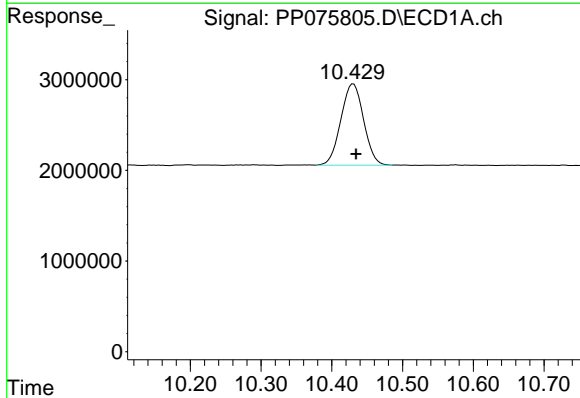


#1 Tetrachloro-m-xylene
 R.T.: 4.652 min
 Delta R.T.: -0.003 min
 Response: 27758256
 Conc: 21.21 ng/ml

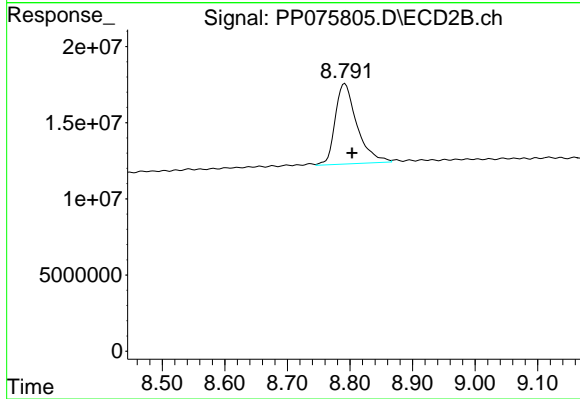
Instrument :
 ECD_P
 ClientSampleId :
 I.BLK



#1 Tetrachloro-m-xylene
 R.T.: 3.790 min
 Delta R.T.: -0.006 min
 Response: 111137203
 Conc: 18.22 ng/ml



#2 Decachlorobiphenyl
 R.T.: 10.431 min
 Delta R.T.: -0.004 min
 Response: 20047124
 Conc: 20.10 ng/ml



#2 Decachlorobiphenyl
 R.T.: 8.792 min
 Delta R.T.: -0.011 min
 Response: 128047980
 Conc: 21.23 ng/ml