

Data Path : Z:\voasrv\HPCHEM1\MSVOA_N\Data\VN101725\
 Data File : VN088058.D
 Acq On : 17 Oct 2025 10:56
 Operator : JC\MD
 Sample : VN1017WBL01
 Misc : 5.0mL/MSVOA_N/WATER
 ALS Vial : 5 Sample Multiplier: 1

Instrument :
 MSVOA_N
ClientSampleId :
 VN1017WBL01

Quant Time: Oct 18 01:27:03 2025
 Quant Method : Z:\voasrv\HPCHEM1\MSVOA_N\methods\624N100825W.M
 Quant Title : METHOD 624 VOLATILE ORGANIC ANALYSIS
 QLast Update : Thu Oct 09 02:36:32 2025
 Response via : Initial Calibration

Compound	R.T.	QIon	Response	Conc	Units	Dev(Min)
Internal Standards						
1) Bromochloromethane	7.794	128	56868	30.000	ug/l	0.00
28) 1,4-Difluorobenzene	9.083	114	316193	30.000	ug/l	0.00
57) Chlorobenzene-d5	11.841	117	274787	30.000	ug/l	0.00
System Monitoring Compounds						
27) 1,2-Dichloroethane-d4	8.559	65	143302	32.361	ug/l	0.00
Spiked Amount	30.000	Range 91 - 110	Recovery	=	107.867%	
60) 4-Bromofluorobenzene	12.829	95	128667	28.403	ug/l	0.00
Spiked Amount	30.000	Range 63 - 112	Recovery	=	94.667%	
63) Toluene-d8	10.547	98	385579	31.494	ug/l	0.00
Spiked Amount	30.000	Range 91 - 112	Recovery	=	104.967%	

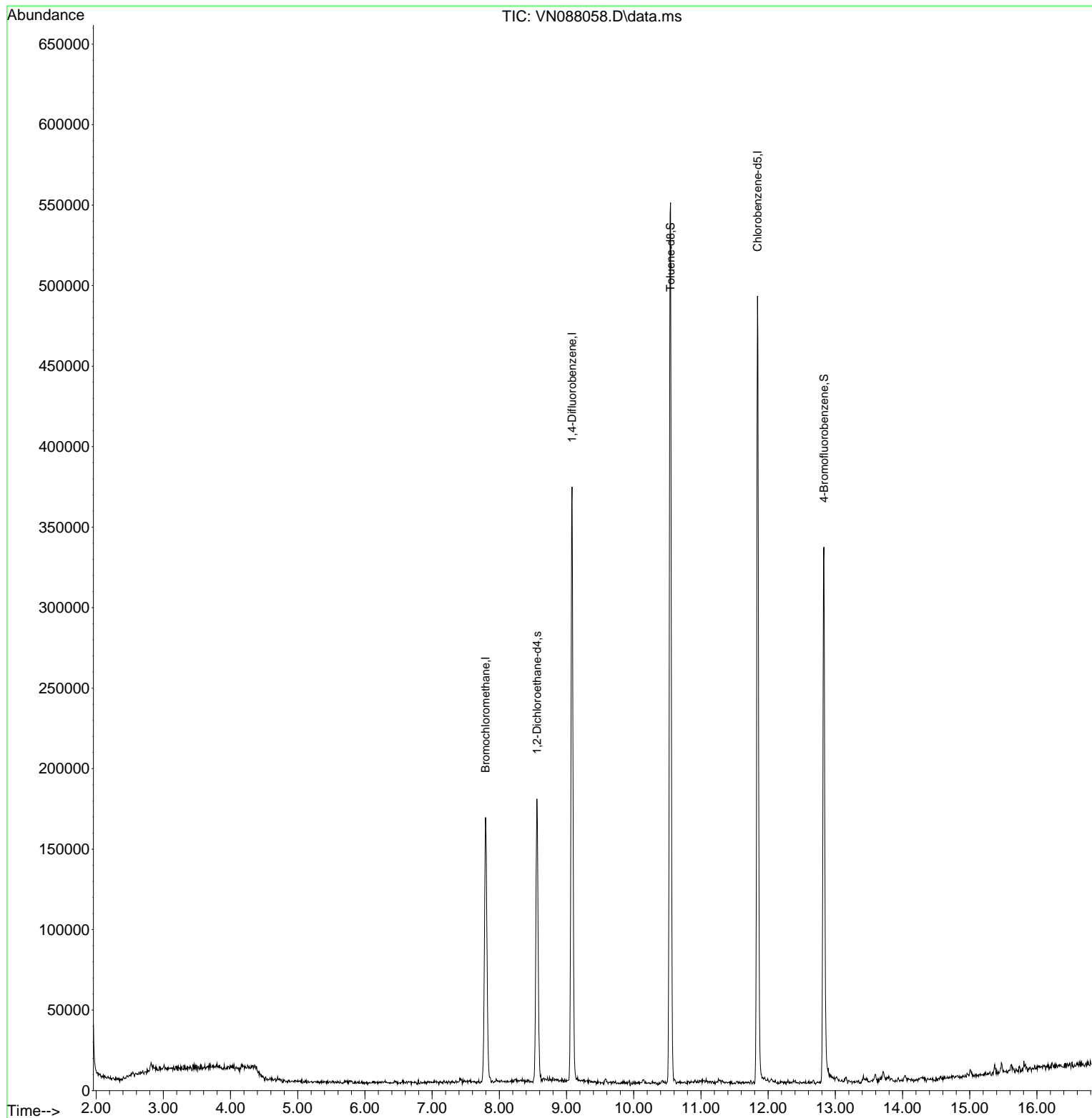
Target Compounds Qvalue

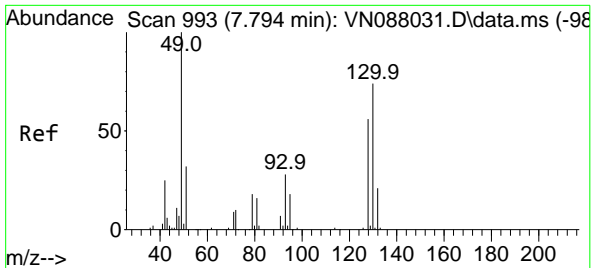
(#) = qualifier out of range (m) = manual integration (+) = signals summed

Data Path : Z:\voasrv\HPCHEM1\MSVOA_N\Data\VN101725\
Data File : VN088058.D
Acq On : 17 Oct 2025 10:56
Operator : JC\MD
Sample : VN1017WBL01
Misc : 5.0mL/MSVOA_N/WATER
ALS Vial : 5 Sample Multiplier: 1

Instrument :
MSVOA_N
ClientSampleId :
VN1017WBL01

Quant Time: Oct 18 01:27:03 2025
Quant Method : Z:\voasrv\HPCHEM1\MSVOA_N\methods\624N100825W.M
Quant Title : METHOD 624 VOLATILE ORGANIC ANALYSIS
QLast Update : Thu Oct 09 02:36:32 2025
Response via : Initial Calibration

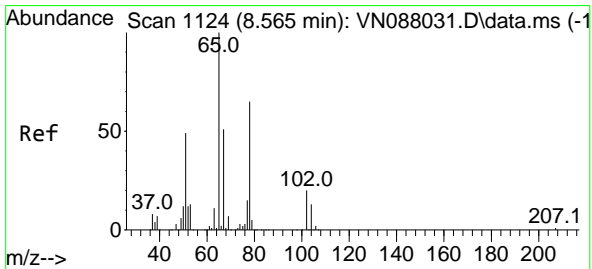
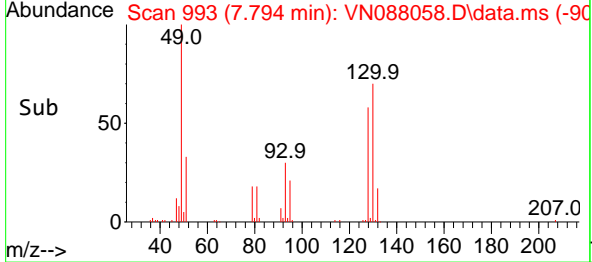
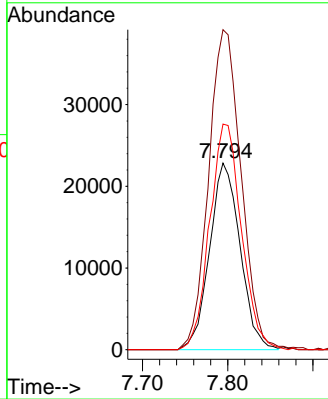
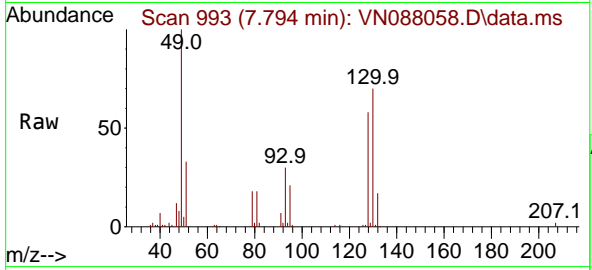




#1
 Bromochloromethane
 Concen: 30.000 ug/l
 RT: 7.794 min Scan# 993
 Delta R.T. 0.000 min
 Lab File: VN088058.D
 Acq: 17 Oct 2025 10:56

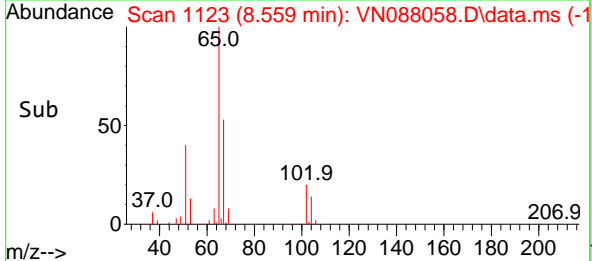
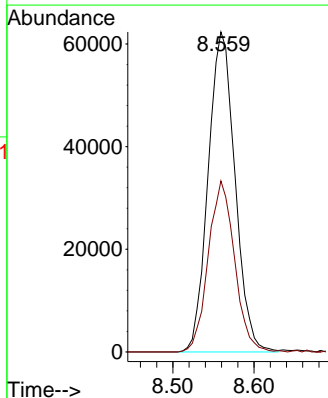
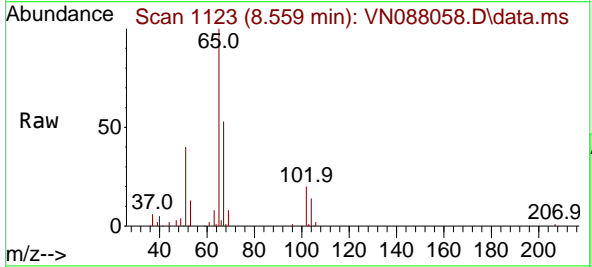
Instrument :
 MSVOA_N
 ClientSampleId :
 VN1017WBL01

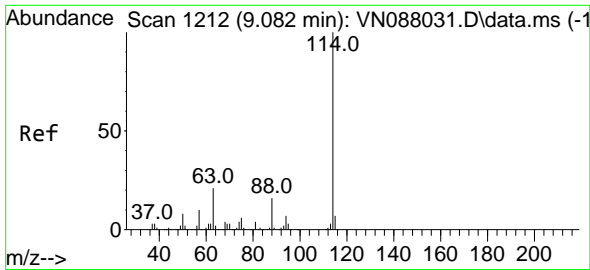
Tgt Ion	Resp	Lower	Upper
128	100		
49	182.3	0.0	439.8
130	125.9	0.0	325.8



#27
 1,2-Dichloroethane-d4
 Concen: 32.361 ug/l
 RT: 8.559 min Scan# 1123
 Delta R.T. -0.006 min
 Lab File: VN088058.D
 Acq: 17 Oct 2025 10:56

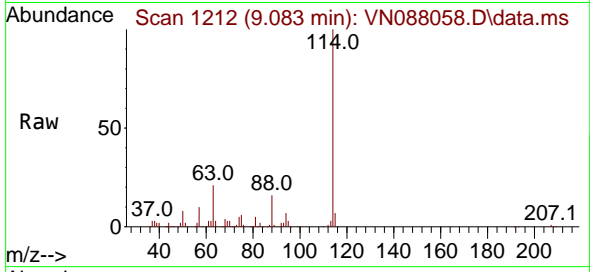
Tgt Ion	Resp	Lower	Upper
65	100		
67	52.3	41.9	62.9



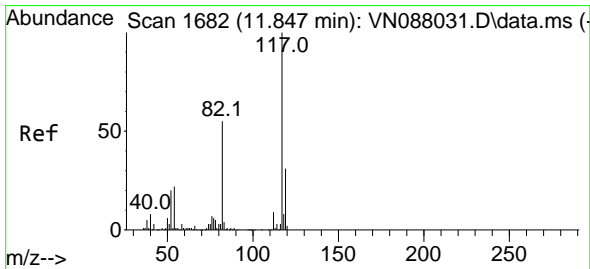
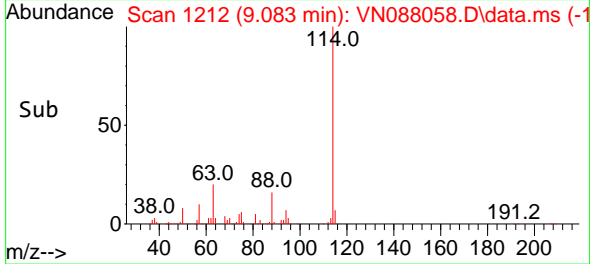
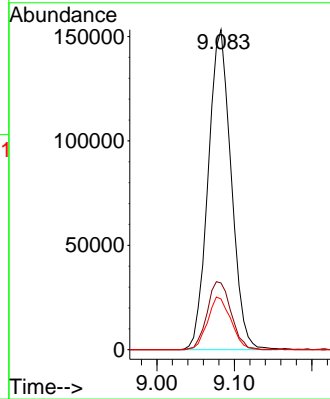


#28
 1,4-Difluorobenzene
 Concen: 30.000 ug/l
 RT: 9.083 min Scan# 11
 Delta R.T. 0.000 min
 Lab File: VN088058.D
 Acq: 17 Oct 2025 10:56

Instrument :
 MSVOA_N
 ClientSampleId :
 VN1017WBL01

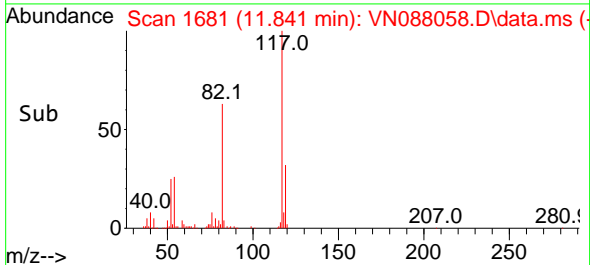
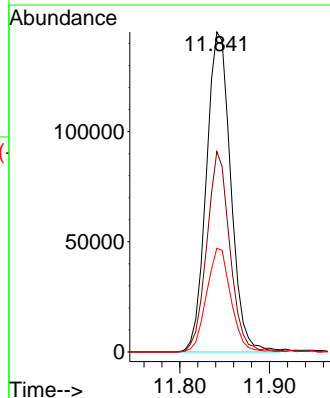
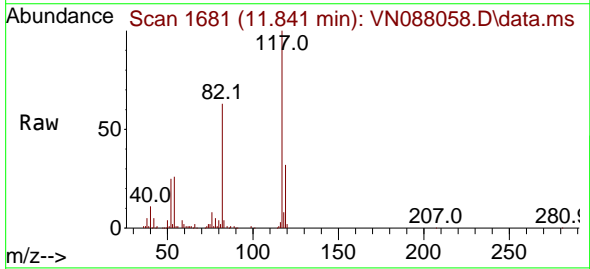


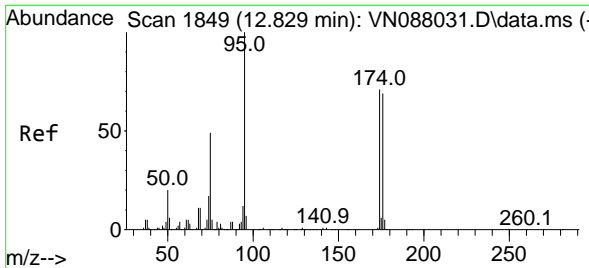
Tgt Ion:114 Resp: 316193
 Ion Ratio Lower Upper
 114 100
 63 22.1 16.6 25.0
 88 16.7 12.6 18.8



#57
 Chlorobenzene-d5
 Concen: 30.000 ug/l
 RT: 11.841 min Scan# 1681
 Delta R.T. -0.006 min
 Lab File: VN088058.D
 Acq: 17 Oct 2025 10:56

Tgt Ion:117 Resp: 274787
 Ion Ratio Lower Upper
 117 100
 82 58.7 45.2 67.8
 119 32.3 25.9 38.9



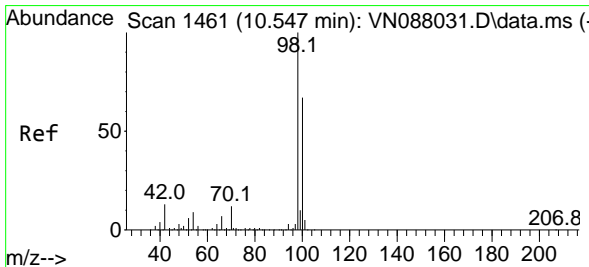
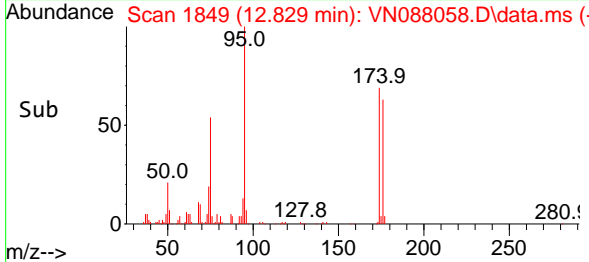
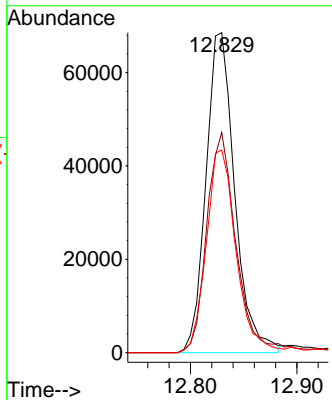
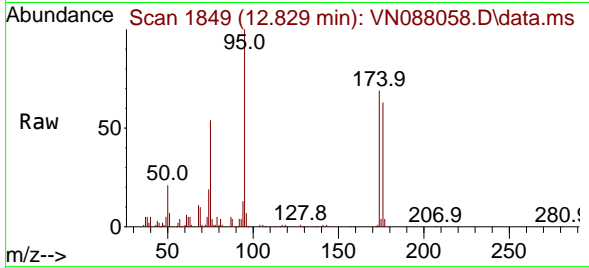


#60
 4-Bromofluorobenzene
 Concen: 28.403 ug/l
 RT: 12.829 min Scan# 1849
 Delta R.T. 0.000 min
 Lab File: VN088058.D
 Acq: 17 Oct 2025 10:56

Instrument : MSVOA_N
 ClientSampleId : VN1017WBL01

Tgt Ion: 95 Resp: 128667

Ion	Ratio	Lower	Upper
95	100		
174	68.7	57.4	86.0
176	65.5	57.0	85.4



#63
 Toluene-d8
 Concen: 31.494 ug/l
 RT: 10.547 min Scan# 1461
 Delta R.T. 0.000 min
 Lab File: VN088058.D
 Acq: 17 Oct 2025 10:56

Tgt Ion: 98 Resp: 385579

Ion	Ratio	Lower	Upper
98	100		
100	65.5	53.1	79.7

