

LB137570

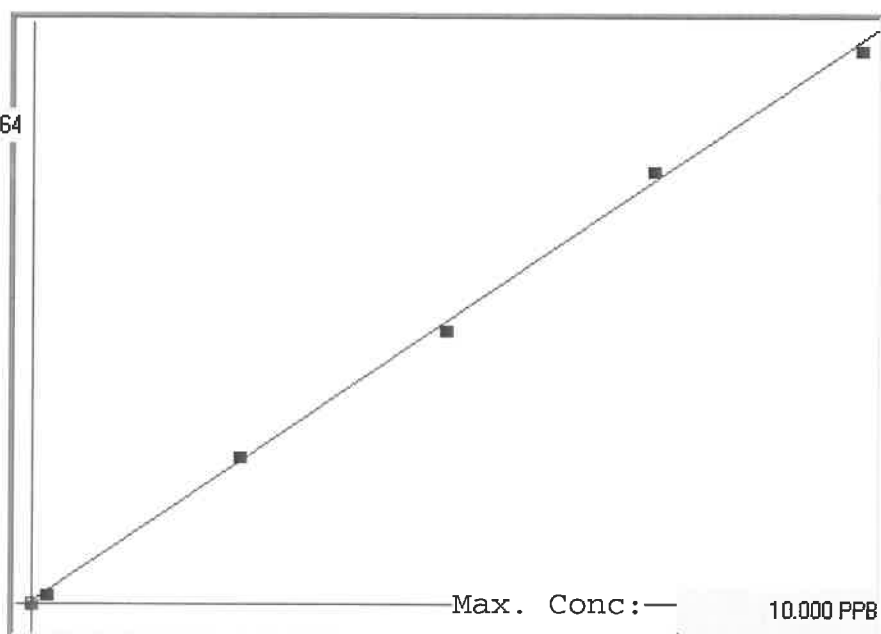
7471B

INSTRUMENT ID: CV1

Linear

μ Abs.:

42264



A= 0.0000e+000

B= 2.3406e-004

C= -4.1352e-002

Rho= 0.9993629

Accept=Accepted

Std ID	Conc.	Calc.	Dev.	Mean	SD or %RSD	Rep 1	Rep 2	Rep 3	Rep 4	Rep 5
0.0	0.000	-0.037	-0.037	17	0.000	17				
0.2	0.200	0.160	-0.040	860	0.0 %	860				
2.5	2.500	2.620	0.120	11370	0.0 %	11370				
5.0	5.000	4.882	-0.118	21034	0.0 %	21034				
7.5	7.500	7.725	0.225	33180	0.0 %	33180				
10.0	10.000	9.851	-0.149	42264	0.0 %	42264				

LB137570 INSTRUMENT ID : CV1

Method: 7471B Operator: Admin Date of Analysis: 17 Oct 2025 09:43:51

Type	Sample ID	Extended ID	Conc.	μ Abs	Units	Type	Std Conc	Method	Date
S	0.0 - 1	50	-	17	PPB	Std	0.0000	7471B	17 Oct 2025 09:54:34
S	0.2 - 1	50.2	-	860	PPB	Std	0.2000	7471B	17 Oct 2025 09:56:55
S	2.5 - 1	52.5	-	11370	PPB	Std	2.5000	7471B	17 Oct 2025 09:59:12
S	5.0 - 1	55	-	21034	PPB	Std	5.0000	7471B	17 Oct 2025 10:01:29
S	7.5 - 1	57.5	-	33180	PPB	Std	7.5000	7471B	17 Oct 2025 10:04:02
S	10.0 - 1	57.5	-	42264	PPB	Std	10.0000	7471B	17 Oct 2025 10:06:39
U	ICV77 - 1	ICV77	3.8693	16708	PPB	SMPL	-	7471B	17 Oct 2025 10:10:19
U	ICB77 - 1	ICB77	-0.1256	-360	PPB	SMPL	-	7471B	17 Oct 2025 10:12:36
U	CCV50 - 1	CCV50	4.7568	20500	PPB	SMPL	-	7471B	17 Oct 2025 10:15:12
U	CCB50 - 1	CCB50	-0.1251	-358	PPB	SMPL	-	7471B	17 Oct 2025 10:17:27
U	CRA - 1	CRA	0.1609	864	PPB	SMPL	-	7471B	17 Oct 2025 10:20:07
U	HighStd - 1	HighStd	10.0784	43236	PPB	SMPL	-	7471B	17 Oct 2025 10:22:22
U	ChkStd - 1	ChkStd	7.1873	30884	PPB	SMPL	-	7471B	17 Oct 2025 10:24:37
U	PB170143BL - 1	PBS	-0.1612	-512	PPB	SMPL	-	7471B	17 Oct 2025 10:27:22
U	PB170143BS - 1	LCSS	3.2636	14120	PPB	SMPL	-	7471B	17 Oct 2025 10:30:05
U	Q3352-01 - 1	TP-3	-0.0395	8	PPB	SMPL	-	7471B	17 Oct 2025 10:32:21
U	Q3352-01DUP - 1	TP-3DUP	0.0455	371	PPB	SMPL	-	7471B	17 Oct 2025 10:34:56
U	Q3352-01MS - 1	TP-3MS	4.1691	17989	PPB	SMPL	-	7471B	17 Oct 2025 10:37:13
U	Q3352-01MSD - 1	TP-3MSD	4.1954	18101	PPB	SMPL	-	7471B	17 Oct 2025 10:39:30
U	Q3354-01 - 1	HT1403	2.1590	9401	PPB	SMPL	-	7471B	17 Oct 2025 10:42:05
U	CCV51 - 1	CCV51	4.9774	21442	PPB	SMPL	-	7471B	17 Oct 2025 10:44:37
U	CCB51 - 1	CCB51	-0.1380	-413	PPB	SMPL	-	7471B	17 Oct 2025 10:47:06
U	Q3355-01 - 1	EO-03-101525	0.2213	1122	PPB	SMPL	-	7471B	17 Oct 2025 10:49:45
U	Q3363-01 - 1	PR132-SOL-085011-20251015	38.7987	165941	PPB	SMPL	-	7471B	17 Oct 2025 10:52:07
X	Q3363-02 - 1	PR132-SOL-039085-20251015	HIGH	418836	PPB	-	-	7471B	17 Oct 2025 10:54:22
U	Q3363-03 - 1	PR132-SOL-028010-20251015	39.6938	169765	PPB	SMPL	-	7471B	17 Oct 2025 10:56:44
U	Q3363-04 - 1	PR132-SOL-010013-20251015	43.9342	187882	PPB	SMPL	-	7471B	17 Oct 2025 10:59:58
U	Q3363-05 - 1	COMP01-20251015	39.9657	170927	PPB	SMPL	-	7471B	17 Oct 2025 11:03:10
U	Q3366-01 - 1	TR-06-101625	-0.0732	-136	PPB	SMPL	-	7471B	17 Oct 2025 11:06:11
U	Q3366-03 - 1	TR-1-101625	1.7984	7860	PPB	SMPL	-	7471B	17 Oct 2025 11:09:07
U	Q3367-01 - 1	BU-03-101625	-0.0109	130	PPB	SMPL	-	7471B	17 Oct 2025 11:11:25
U	Q3369-01 - 1	MH-22	1.3377	5892	PPB	SMPL	-	7471B	17 Oct 2025 11:13:48
U	CCV52 - 1	CCV52	5.1241	22069	PPB	SMPL	-	7471B	17 Oct 2025 11:16:03
U	CCB52 - 1	CCB52	-0.1230	-349	PPB	SMPL	-	7471B	17 Oct 2025 11:18:22
U	Q3369-05 - 1	MH-21	0.0129	232	PPB	SMPL	-	7471B	17 Oct 2025 11:21:01
U	Q3352-01LX5 - 1		-0.0334	34	PPB	SMPL	-	7471B	17 Oct 2025 11:23:16
U	Q3352-01A - 1		4.2934	18520	PPB	SMPL	-	7471B	17 Oct 2025 11:25:31
U	Q3363-1DLX10 - 1		3.6156	15624	PPB	SMPL	-	7471B	17 Oct 2025 11:27:47
U	Q3363-2DLX10 - 1		17.0265	72921	PPB	SMPL	-	7471B	17 Oct 2025 11:30:34
U	Q3363-3DLX10 - 1		5.4750	23568	PPB	SMPL	-	7471B	17 Oct 2025 11:33:05
U	Q3363-4DLX10 - 1		5.1550	22201	PPB	SMPL	-	7471B	17 Oct 2025 11:35:53
U	Q3363-5DLX10 - 1		4.9015	21118	PPB	SMPL	-	7471B	17 Oct 2025 11:38:34
U	Q3363-02DL2X50 - 1		3.5709	15433	PPB	SMPL	-	7471B	17 Oct 2025 11:41:13
U	CCV53 - 1	CCV53	5.2353	22544	PPB	SMPL	-	7471B	17 Oct 2025 11:43:50
U	CCB53 - 1	CCB53	-0.1373	-410	PPB	SMPL	-	7471B	17 Oct 2025 11:46:24