

Data Path : Z:\pestpcbsrv\HPCHEM1\ECD_0\Data\PO100925\
 Data File : PO114315.D
 Signal(s) : Signal #1: ECD1A.ch Signal #2: ECD2B.ch
 Acq On : 09 Oct 2025 14:50
 Operator : YP/AJ
 Sample : AR1660ICC500
 Misc :
 ALS Vial : 5 Sample Multiplier: 1

Instrument :
 ECD_0
 ClientSampleId :
 AR1660ICC500

Integration File signal 1: autoint1.e
 Integration File signal 2: autoint2.e
 Quant Time: Oct 09 15:08:38 2025
 Quant Method : Z:\pestpcbsrv\HPCHEM1\ECD_0\methods\PO100925.M
 Quant Title : GC EXTRACTABLES
 QLast Update : Thu Oct 09 15:08:19 2025
 Response via : Initial Calibration
 Integrator: ChemStation

Volume Inj. : 2 µl
 Signal #1 Phase : ZB-MR2 Signal #2 Phase: ZB-MR2
 Signal #1 Info : 30Mx0.32mmx 0.50µ Signal #2 Info : 30M x 0.32mm x 0.25µm

Compound	RT#1	RT#2	Resp#1	Resp#2	ng/ml	ng/ml

System Monitoring Compounds						
1) SA Tetrachlo...	4.355	3.660	282.1E6	204.8E6	50.000	50.000
2) SA Decachlor...	9.934	8.671	186.4E6	170.0E6	50.000	50.000
Target Compounds						
3) L1 AR-1016-1	5.492	4.743	91928434	86181093	500.000	500.000
4) L1 AR-1016-2	5.514	4.762	152.6E6	122.9E6	500.000	500.000
5) L1 AR-1016-3	5.576	4.936	87130216	64110508	500.000	500.000
6) L1 AR-1016-4	5.671	4.979	70061287	50121323	500.000	500.000
7) L1 AR-1016-5	5.963	5.192	64454469	64334538	500.000	500.000
31) L7 AR-1260-1	7.075	6.225	111.4E6	117.8E6	500.000	500.000
32) L7 AR-1260-2	7.329	6.413	154.8E6	168.6E6	500.000	500.000
33) L7 AR-1260-3	7.685	6.566	132.9E6	139.2E6	500.000	500.000
34) L7 AR-1260-4	7.907	7.039	116.9E6	113.1E6	500.000	500.000
35) L7 AR-1260-5	8.213	7.279	296.8E6	311.7E6	500.000	500.000

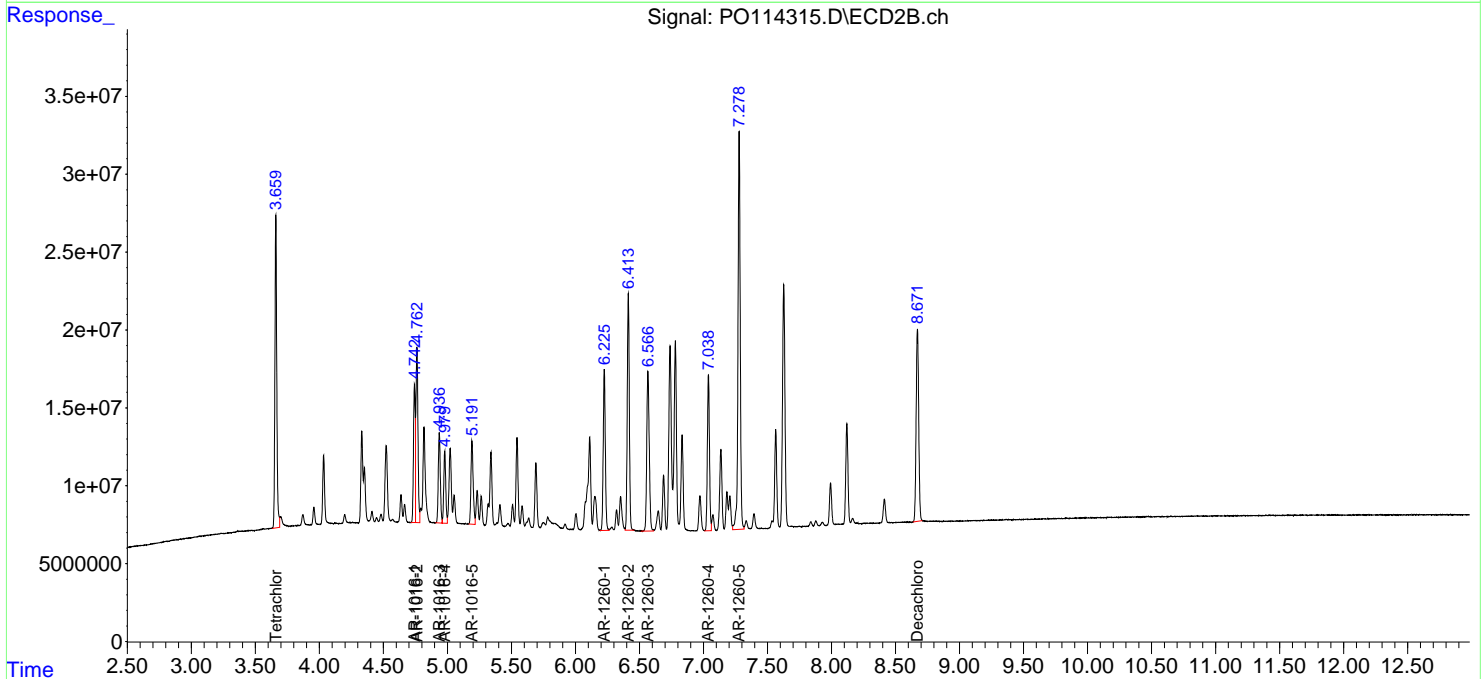
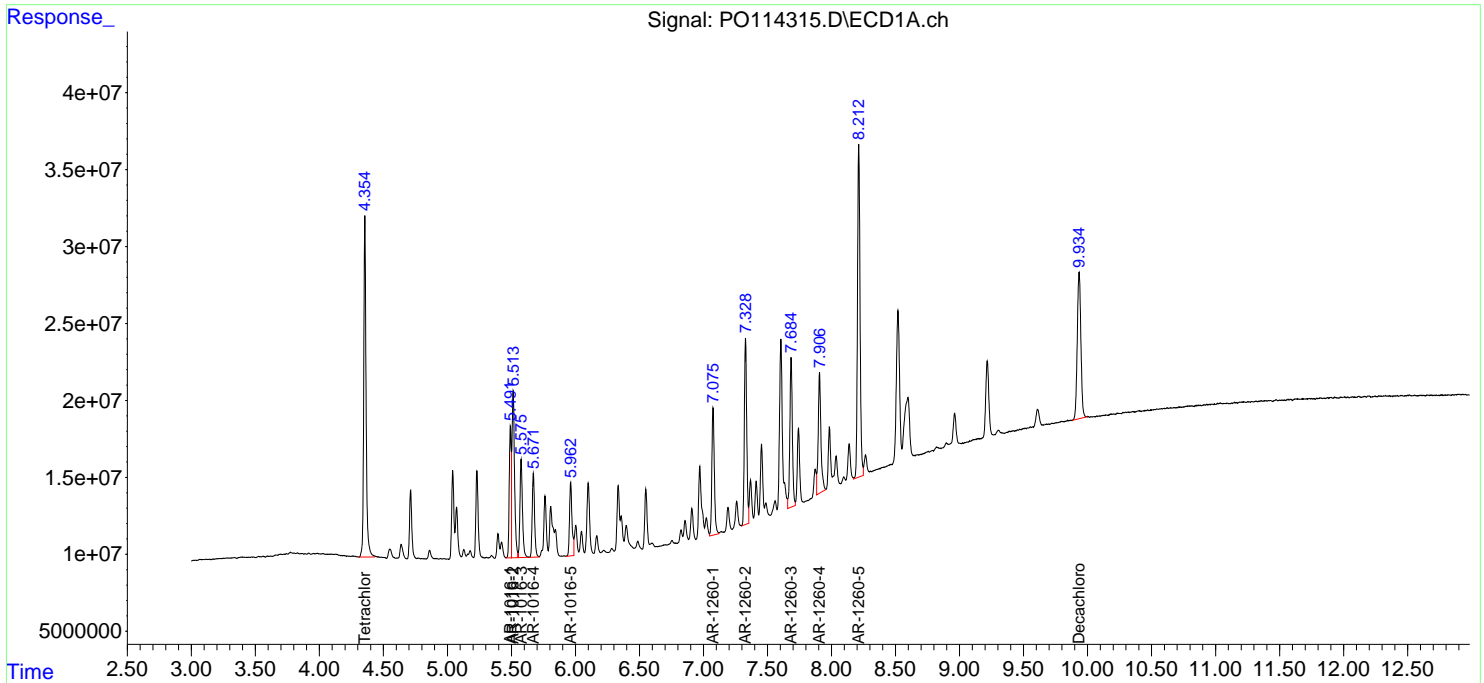
(f)=RT Delta > 1/2 Window (#)=Amounts differ by > 25% (m)=manual int.

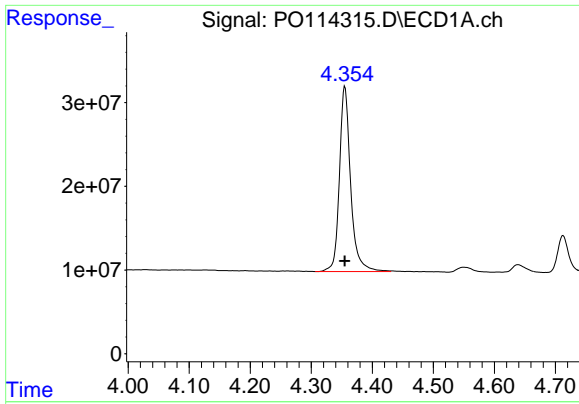
Data Path : Z:\pestpcbsrv\HPCHEM1\ECD_O\Data\PO100925\
 Data File : PO114315.D
 Signal(s) : Signal #1: ECD1A.ch Signal #2: ECD2B.ch
 Acq On : 09 Oct 2025 14:50
 Operator : YP/AJ
 Sample : AR1660ICC500
 Misc :
 ALS Vial : 5 Sample Multiplier: 1

Instrument :
 ECD_O
 ClientSampleId :
 AR1660ICC500

Integration File signal 1: autoint1.e
 Integration File signal 2: autoint2.e
 Quant Time: Oct 09 15:08:38 2025
 Quant Method : Z:\pestpcbsrv\HPCHEM1\ECD_O\methods\PO100925.M
 Quant Title : GC EXTRACTABLES
 QLast Update : Thu Oct 09 15:08:19 2025
 Response via : Initial Calibration
 Integrator: ChemStation

Volume Inj. : 2 µl
 Signal #1 Phase : ZB-MR1 Signal #2 Phase: ZB-MR2
 Signal #1 Info : 30Mx0.32mmx 0.50µ Signal #2 Info : 30M x 0.32mm x 0.25µm

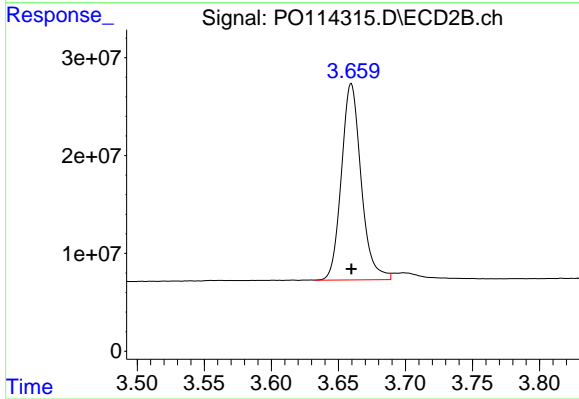




#1 Tetrachloro-m-xylene

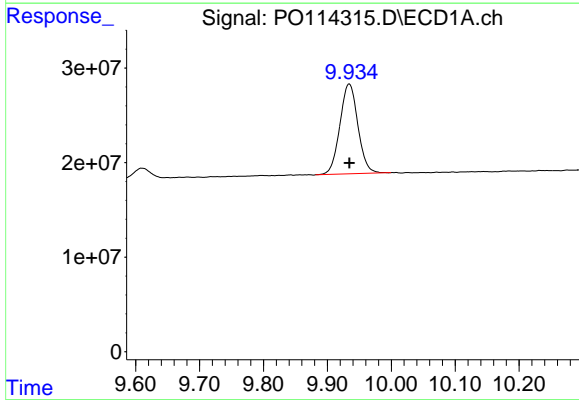
R.T.: 4.355 min
 Delta R.T.: 0.000 min
 Response: 282122961
 Conc: 50.00 ng/ml

Instrument :
 ECD_O
 ClientSampleId :
 AR1660ICC500



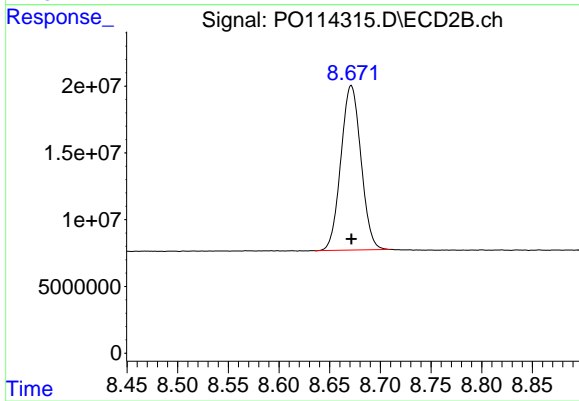
#1 Tetrachloro-m-xylene

R.T.: 3.660 min
 Delta R.T.: 0.000 min
 Response: 204841114
 Conc: 50.00 ng/ml



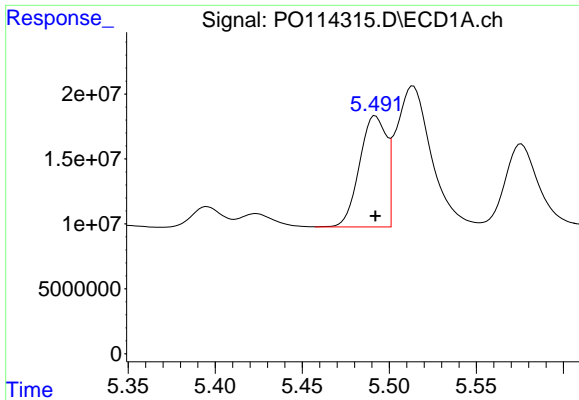
#2 Decachlorobiphenyl

R.T.: 9.934 min
 Delta R.T.: 0.000 min
 Response: 186401834
 Conc: 50.00 ng/ml



#2 Decachlorobiphenyl

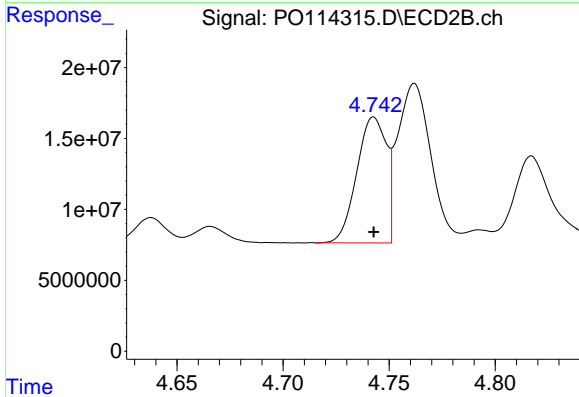
R.T.: 8.671 min
 Delta R.T.: 0.000 min
 Response: 169990068
 Conc: 50.00 ng/ml



#3 AR-1016-1

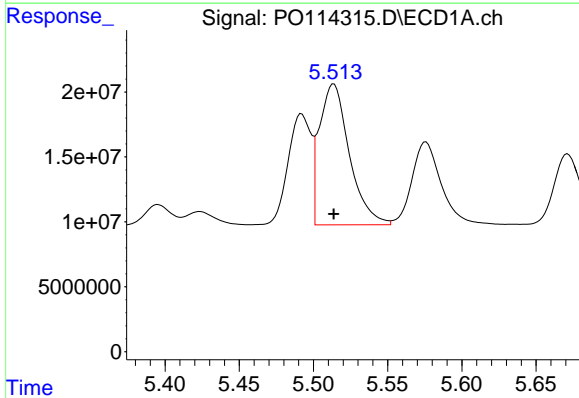
R.T.: 5.492 min
 Delta R.T.: 0.000 min
 Response: 91928434
 Conc: 500.00 ng/ml

Instrument :
 ECD_O
 ClientSampleId :
 AR1660ICC500



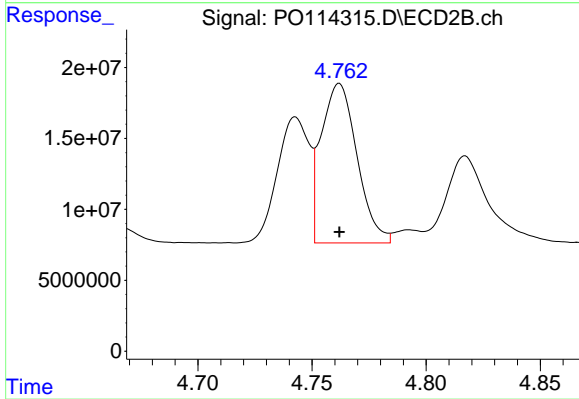
#3 AR-1016-1

R.T.: 4.743 min
 Delta R.T.: 0.000 min
 Response: 86181093
 Conc: 500.00 ng/ml



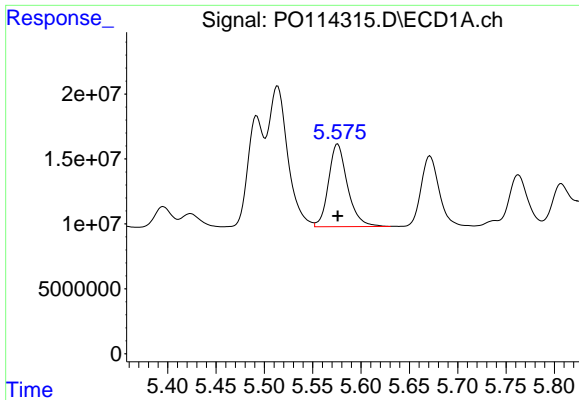
#4 AR-1016-2

R.T.: 5.514 min
 Delta R.T.: 0.000 min
 Response: 152610365
 Conc: 500.00 ng/ml



#4 AR-1016-2

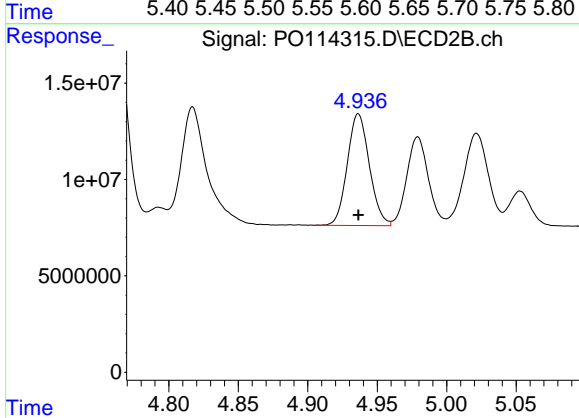
R.T.: 4.762 min
 Delta R.T.: 0.000 min
 Response: 122867450
 Conc: 500.00 ng/ml



#5 AR-1016-3

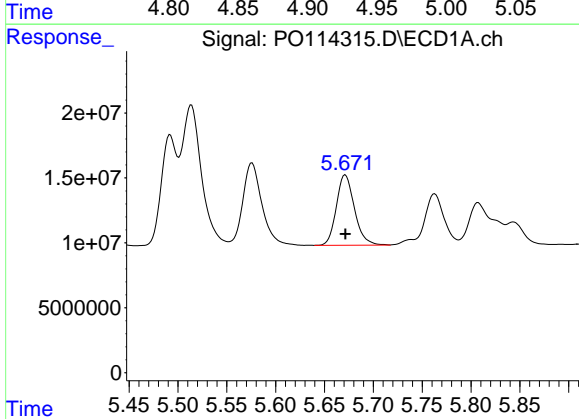
R.T.: 5.576 min
 Delta R.T.: 0.000 min
 Response: 87130216
 Conc: 500.00 ng/ml

Instrument :
 ECD_O
 ClientSampleId :
 AR1660ICC500



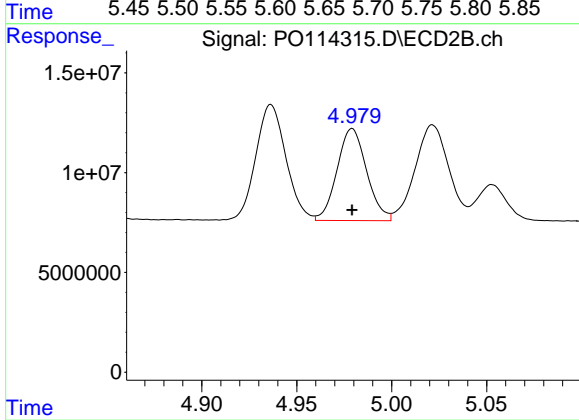
#5 AR-1016-3

R.T.: 4.936 min
 Delta R.T.: 0.000 min
 Response: 64110508
 Conc: 500.00 ng/ml



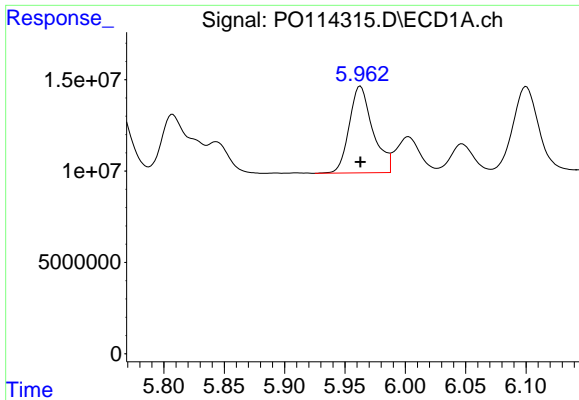
#6 AR-1016-4

R.T.: 5.671 min
 Delta R.T.: 0.000 min
 Response: 70061287
 Conc: 500.00 ng/ml



#6 AR-1016-4

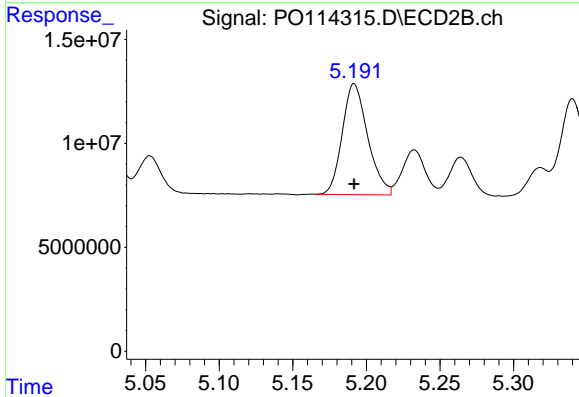
R.T.: 4.979 min
 Delta R.T.: 0.000 min
 Response: 50121323
 Conc: 500.00 ng/ml



#7 AR-1016-5

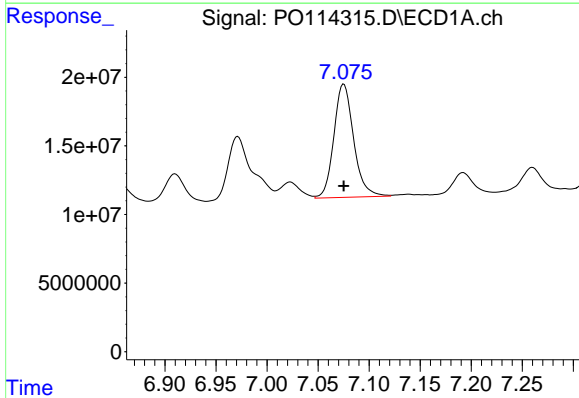
R.T.: 5.963 min
 Delta R.T.: 0.000 min
 Response: 64454469
 Conc: 500.00 ng/ml

Instrument :
 ECD_O
 ClientSampleId :
 AR1660ICC500



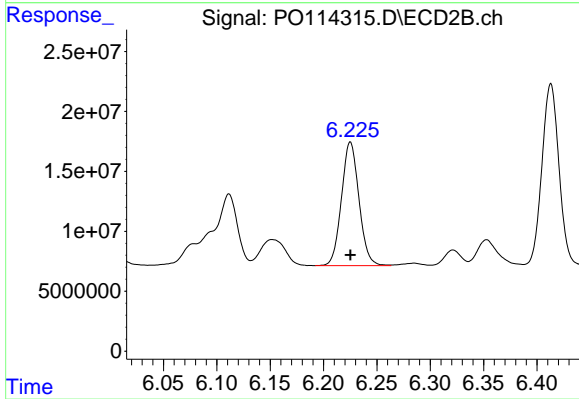
#7 AR-1016-5

R.T.: 5.192 min
 Delta R.T.: 0.000 min
 Response: 64334538
 Conc: 500.00 ng/ml



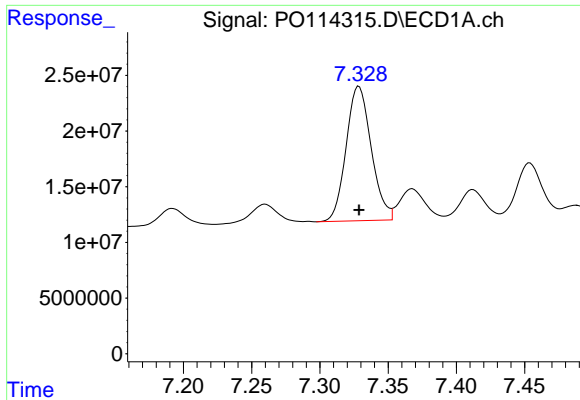
#31 AR-1260-1

R.T.: 7.075 min
 Delta R.T.: 0.000 min
 Response: 111419505
 Conc: 500.00 ng/ml



#31 AR-1260-1

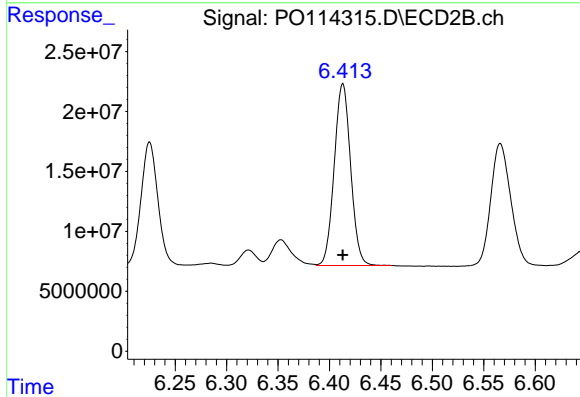
R.T.: 6.225 min
 Delta R.T.: 0.000 min
 Response: 117813345
 Conc: 500.00 ng/ml



#32 AR-1260-2

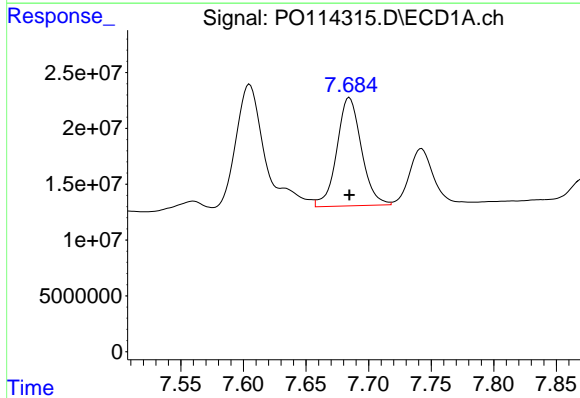
R.T.: 7.329 min
 Delta R.T.: 0.000 min
 Response: 154797269
 Conc: 500.00 ng/ml

Instrument :
 ECD_O
 ClientSampleId :
 AR1660ICC500



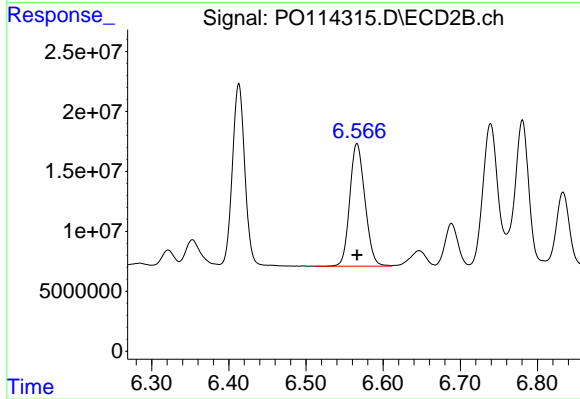
#32 AR-1260-2

R.T.: 6.413 min
 Delta R.T.: 0.000 min
 Response: 168583612
 Conc: 500.00 ng/ml



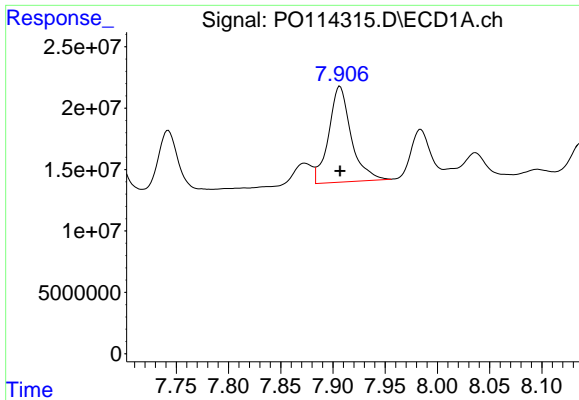
#33 AR-1260-3

R.T.: 7.685 min
 Delta R.T.: 0.000 min
 Response: 132858521
 Conc: 500.00 ng/ml



#33 AR-1260-3

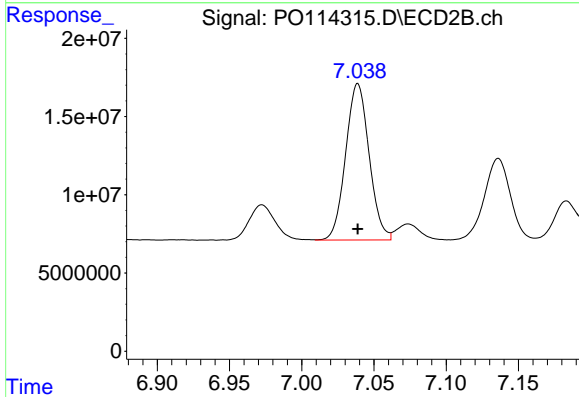
R.T.: 6.566 min
 Delta R.T.: 0.000 min
 Response: 139222321
 Conc: 500.00 ng/ml



#34 AR-1260-4

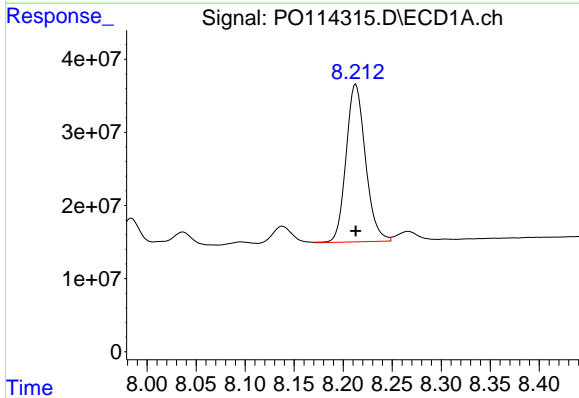
R.T.: 7.907 min
 Delta R.T.: 0.000 min
 Response: 116883919
 Conc: 500.00 ng/ml

Instrument :
 ECD_O
 ClientSampleId :
 AR1660ICC500



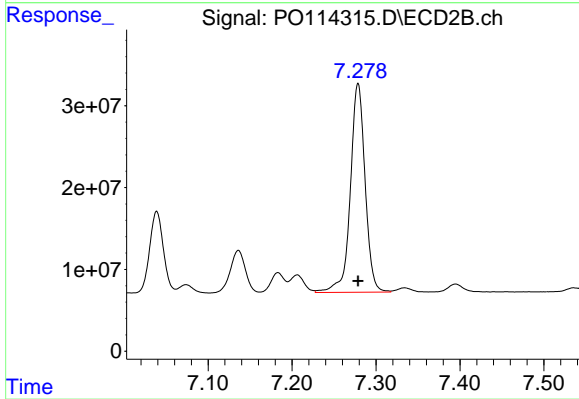
#34 AR-1260-4

R.T.: 7.039 min
 Delta R.T.: 0.000 min
 Response: 113074480
 Conc: 500.00 ng/ml



#35 AR-1260-5

R.T.: 8.213 min
 Delta R.T.: 0.000 min
 Response: 296817141
 Conc: 500.00 ng/ml



#35 AR-1260-5

R.T.: 7.279 min
 Delta R.T.: 0.000 min
 Response: 311740803
 Conc: 500.00 ng/ml