

Data Path : Z:\pestpcbsrv\HPCHEM1\ECD_Q\Data\PQ101025\
 Data File : PQ070983.D
 Signal(s) : Signal #1: ECD1A.ch Signal #2: ECD2B.ch
 Acq On : 10 Oct 2025 11:22
 Operator : YP\AJ
 Sample : AR1242ICC250
 Misc :
 ALS Vial : 13 Sample Multiplier: 1

Instrument :
 ECD_Q
 ClientSampleId :
 AR1242ICC250

Integration File signal 1: autoint1.e
 Integration File signal 2: autoint2.e
 Quant Time: Oct 10 12:15:55 2025
 Quant Method : Z:\pestpcbsrv\HPCHEM1\ECD_Q\Method\PQ101025.M
 Quant Title : GC EXTRACTABLES
 QLast Update : Fri Oct 10 12:10:08 2025
 Response via : Initial Calibration
 Integrator: ChemStation

Volume Inj. : 2 µl
 Signal #1 Phase : ZB-MR1 Signal #2 Phase: ZB-MR2
 Signal #1 Info : 30Mx0.32mmx 0.50µ Signal #2 Info : 30M x 0.32mm x 0.25µm

Compound	RT#1	RT#2	Resp#1	Resp#2	ng/ml	ng/ml

System Monitoring Compounds						
1) SA Tetrachlo...	3.401	2.778	115.1E6	136.2E6	25.240	24.319
2) SA Decachlor...	8.497	7.534	83994234	142.5E6	25.768	25.912
Target Compounds						
16) L4 AR-1242-1	4.481	3.778	31044472	41346745	256.287	260.414
17) L4 AR-1242-2	4.499	3.794	49429930	62193156	260.092	259.416
18) L4 AR-1242-3	4.557	3.954	30938677	33857327	261.612	259.162
19) L4 AR-1242-4	4.647	4.040	25299238	32086157	259.999	272.815
20) L4 AR-1242-5	5.352	4.534	25666453	41818817	325.093	234.281 #

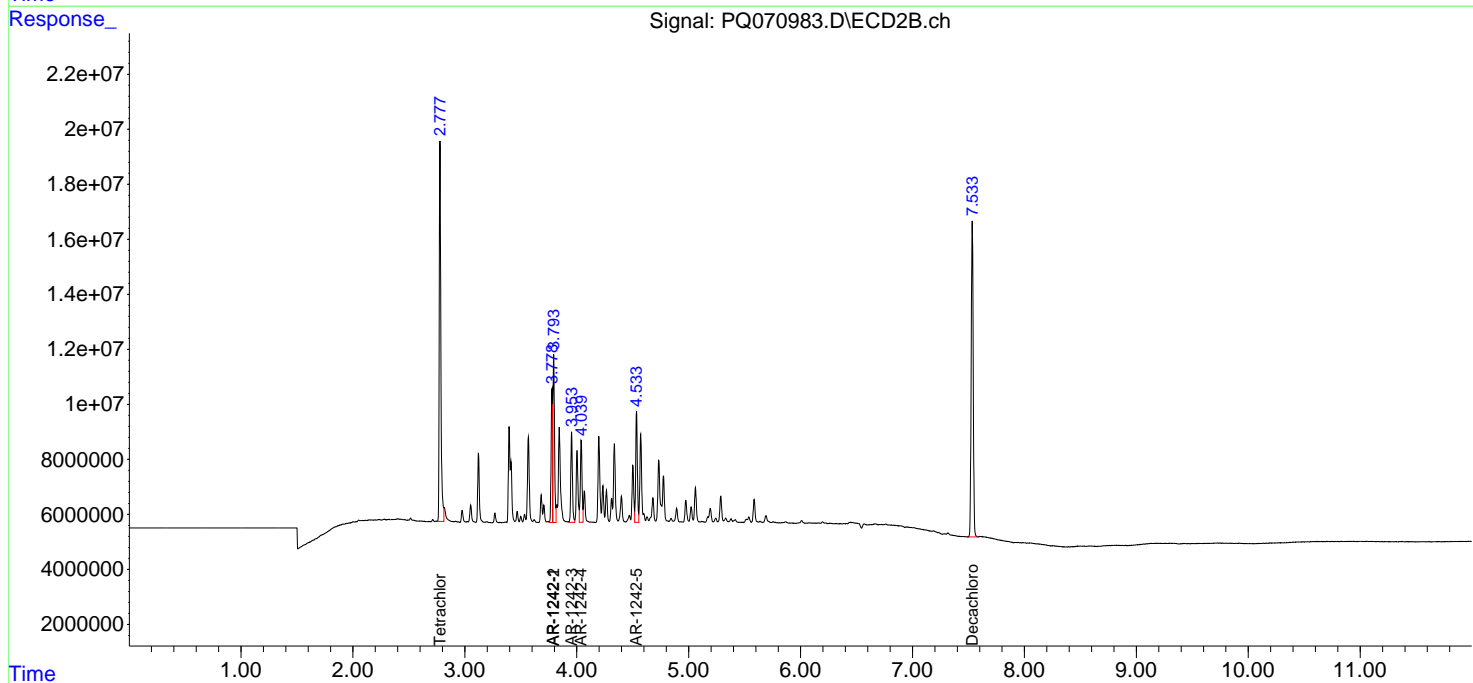
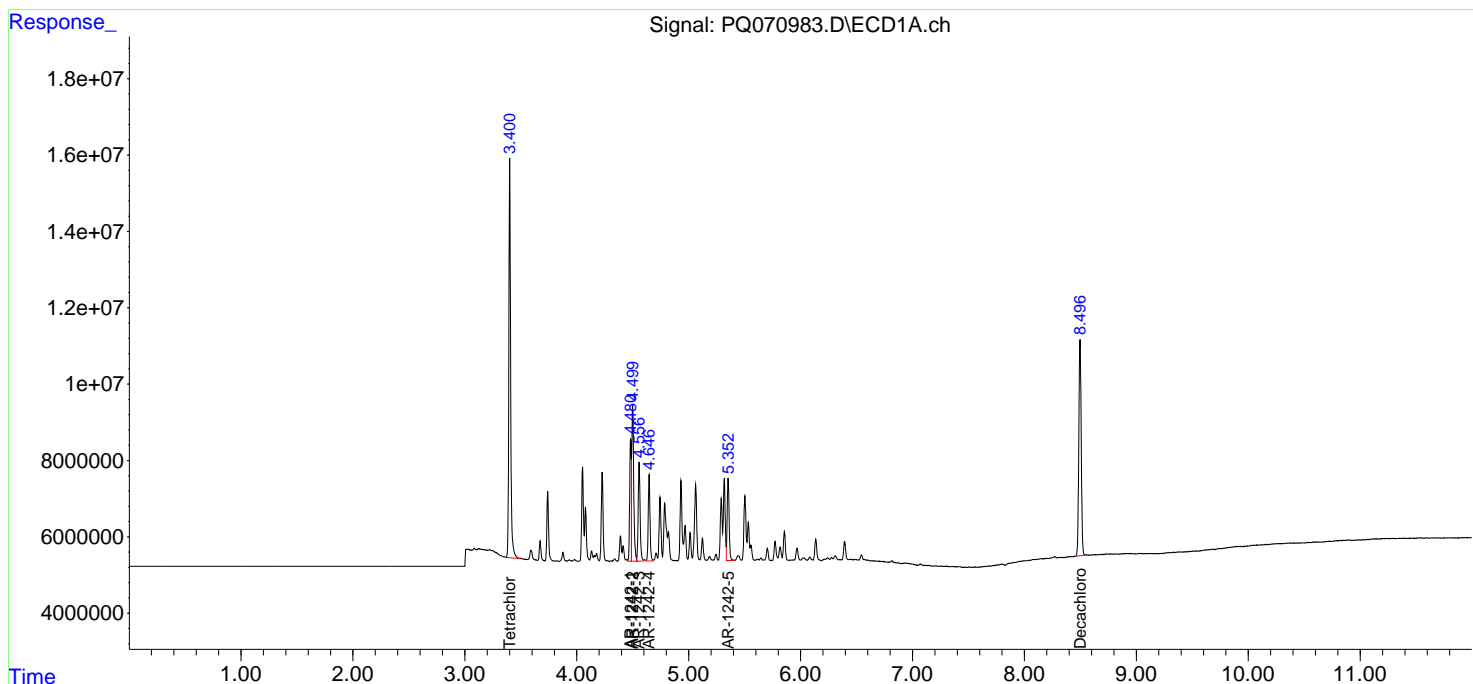
(f)=RT Delta > 1/2 Window (#)=Amounts differ by > 25% (m)=manual int.

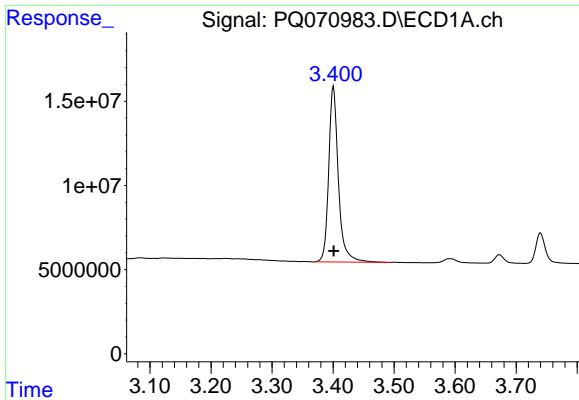
Data Path : Z:\pestpcbsrv\HPCHEM1\ECD_Q\Data\PQ101025\
 Data File : PQ070983.D
 Signal(s) : Signal #1: ECD1A.ch Signal #2: ECD2B.ch
 Acq On : 10 Oct 2025 11:22
 Operator : YP\AJ
 Sample : AR1242ICC250
 Misc :
 ALS Vial : 13 Sample Multiplier: 1

Instrument :
 ECD_Q
 ClientSampleId :
 AR1242ICC250

Integration File signal 1: autoint1.e
 Integration File signal 2: autoint2.e
 Quant Time: Oct 10 12:15:55 2025
 Quant Method : Z:\pestpcbsrv\HPCHEM1\ECD_Q\Method\PQ101025.M
 Quant Title : GC EXTRACTABLES
 QLast Update : Fri Oct 10 12:10:08 2025
 Response via : Initial Calibration
 Integrator: ChemStation

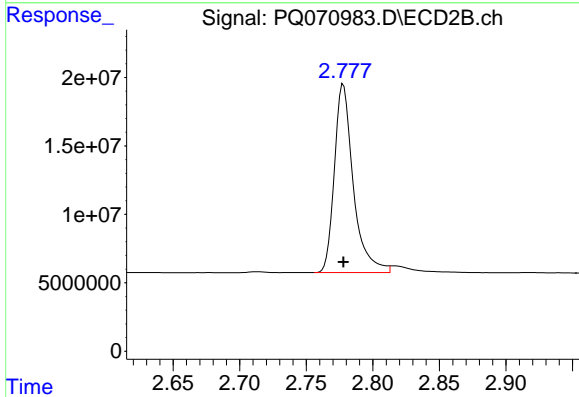
Volume Inj. : 2 µl
 Signal #1 Phase : ZB-MR1 Signal #2 Phase: ZB-MR2
 Signal #1 Info : 30Mx0.32mmx 0.50µ Signal #2 Info : 30M x 0.32mm x 0.25µm



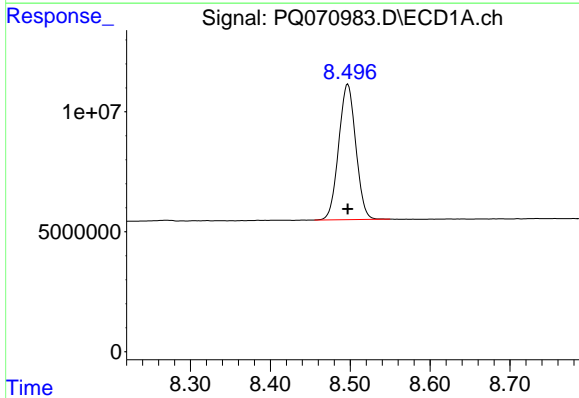


#1 Tetrachloro-m-xylene
 R.T.: 3.401 min
 Delta R.T.: 0.000 min
 Response: 115146396
 Conc: 25.24 ng/ml

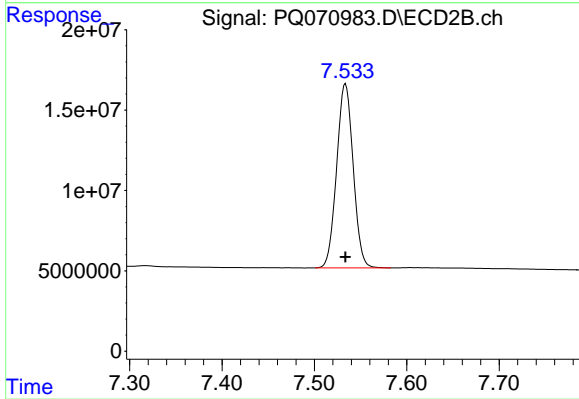
Instrument :
 ECD_Q
 ClientSampleId :
 AR1242ICC250



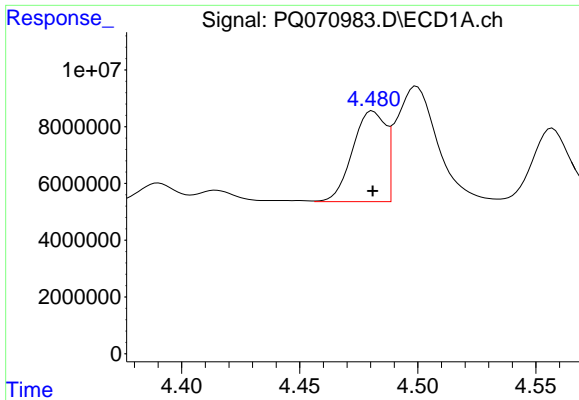
#1 Tetrachloro-m-xylene
 R.T.: 2.778 min
 Delta R.T.: 0.000 min
 Response: 136161324
 Conc: 24.32 ng/ml



#2 Decachlorobiphenyl
 R.T.: 8.497 min
 Delta R.T.: 0.000 min
 Response: 83994234
 Conc: 25.77 ng/ml



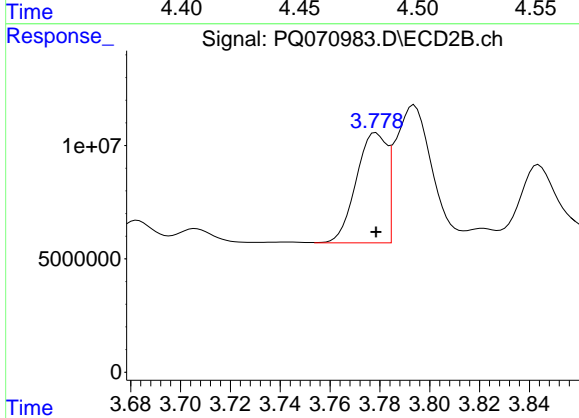
#2 Decachlorobiphenyl
 R.T.: 7.534 min
 Delta R.T.: 0.000 min
 Response: 142468913
 Conc: 25.91 ng/ml



#16 AR-1242-1

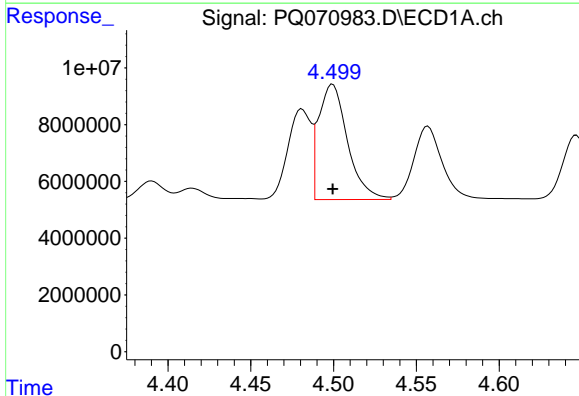
R.T.: 4.481 min
 Delta R.T.: 0.000 min
 Response: 31044472
 Conc: 256.29 ng/ml

Instrument :
 ECD_Q
 ClientSampleId :
 AR1242ICC250



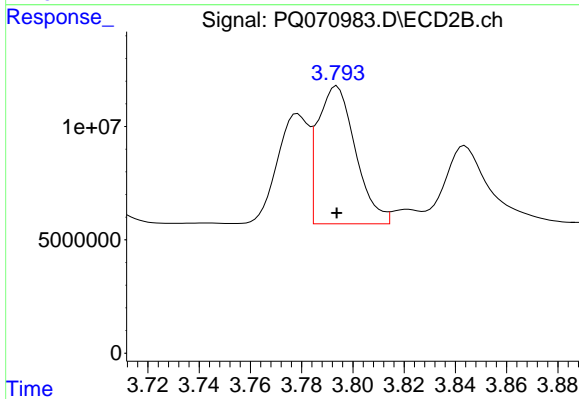
#16 AR-1242-1

R.T.: 3.778 min
 Delta R.T.: 0.000 min
 Response: 41346745
 Conc: 260.41 ng/ml



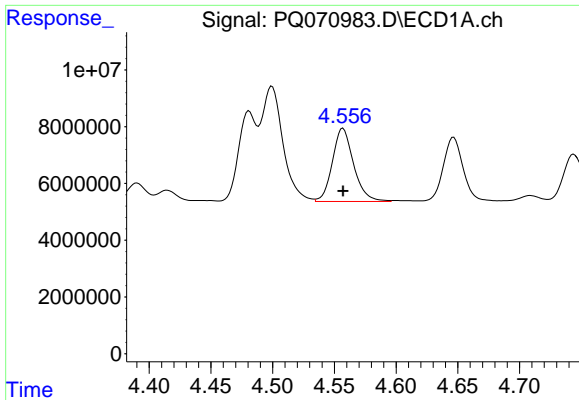
#17 AR-1242-2

R.T.: 4.499 min
 Delta R.T.: 0.000 min
 Response: 49429930
 Conc: 260.09 ng/ml



#17 AR-1242-2

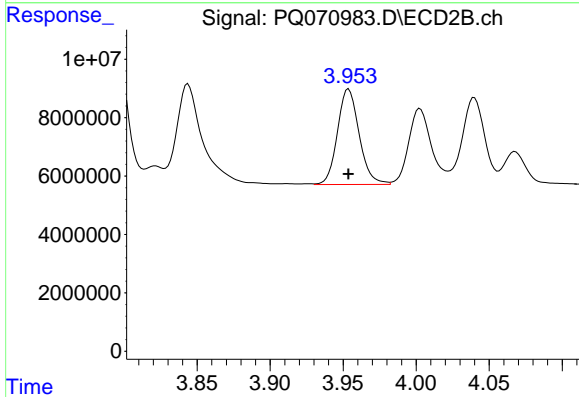
R.T.: 3.794 min
 Delta R.T.: 0.000 min
 Response: 62193156
 Conc: 259.42 ng/ml



#18 AR-1242-3

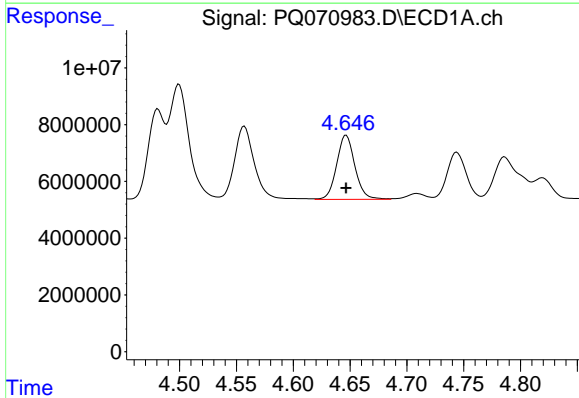
R.T.: 4.557 min
 Delta R.T.: 0.000 min
 Response: 30938677
 Conc: 261.61 ng/ml

Instrument :
 ECD_Q
 ClientSampleId :
 AR1242ICC250



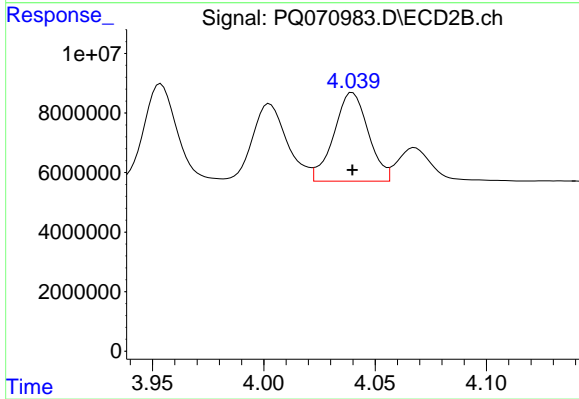
#18 AR-1242-3

R.T.: 3.954 min
 Delta R.T.: 0.000 min
 Response: 33857327
 Conc: 259.16 ng/ml



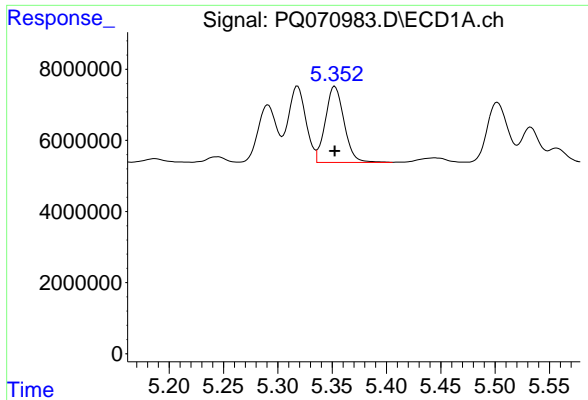
#19 AR-1242-4

R.T.: 4.647 min
 Delta R.T.: 0.000 min
 Response: 25299238
 Conc: 260.00 ng/ml



#19 AR-1242-4

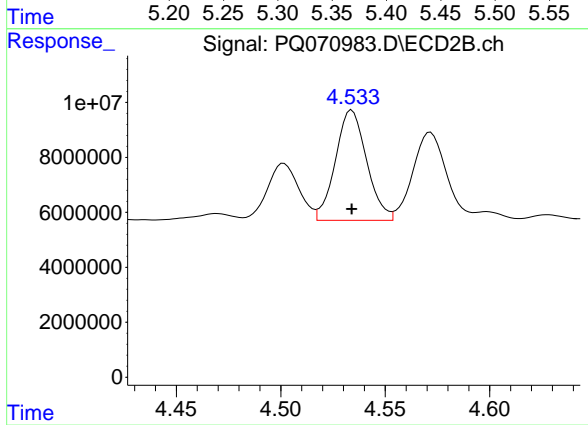
R.T.: 4.040 min
 Delta R.T.: 0.000 min
 Response: 32086157
 Conc: 272.81 ng/ml



#20 AR-1242-5

R.T.: 5.352 min
Delta R.T.: 0.000 min
Response: 25666453
Conc: 325.09 ng/ml

Instrument :
ECD_Q
ClientSampleId :
AR1242ICC250



#20 AR-1242-5

R.T.: 4.534 min
Delta R.T.: 0.000 min
Response: 41818817
Conc: 234.28 ng/ml