

Data Path : Z:\pestpcbsrv\HPCHEM1\ECD\_Q\Data\PQ102025\  
 Data File : PQ071008.D  
 Signal(s) : Signal #1: ECD1A.ch Signal #2: ECD2B.ch  
 Acq On : 20 Oct 2025 10:18  
 Operator : YP\AJ  
 Sample : AR1660CCC500  
 Misc :  
 ALS Vial : 3 Sample Multiplier: 1

**Instrument :**  
 ECD\_Q  
**ClientSampleId :**  
 AR1660CCC500

**Manual Integrations**  
**APPROVED**

Reviewed By :Yogesh Patel 10/21/2025  
 Supervised By :mohammad ahmed 10/25/2025

Integration File signal 1: autoint1.e  
 Integration File signal 2: autoint2.e  
 Quant Time: Oct 21 07:21:54 2025  
 Quant Method : Z:\pestpcbsrv\HPCHEM1\ECD\_Q\Method\PQ101025.M  
 Quant Title : GC EXTRACTABLES  
 QLast Update : Sat Oct 11 01:55:41 2025  
 Response via : Initial Calibration  
 Integrator: ChemStation

Volume Inj. : 2 µl  
 Signal #1 Phase : ZB-MR1 Signal #2 Phase: ZB-MR2  
 Signal #1 Info : 30Mx0.32mmx 0.50µ Signal #2 Info : 30M x 0.32mm x 0.25µm

Compound	RT#1	RT#2	Resp#1	Resp#2	ng/ml	ng/ml
-----						
System Monitoring Compounds						
1) SA Tetrachlo...	3.409	2.776	230.6E6	256.0E6	52.997	50.389
2) SA Decachlor...	8.512	7.536	154.8E6	274.3E6	53.301	54.319
Target Compounds						
3) L1 AR-1016-1	4.492	3.778	78731379	93916390	479.648	419.266
4) L1 AR-1016-2	4.510	3.793	130.3E6	158.2E6	508.477m	465.009
5) L1 AR-1016-3	4.567	3.953	85404633	85218692	536.736	468.598
6) L1 AR-1016-4	4.658	4.001	66986154	77104461	515.559	489.824
7) L1 AR-1016-5	4.942	4.196	65865182	89640872	511.364	467.264
31) L7 AR-1260-1	6.032	5.189	117.6E6	168.9E6	501.671	468.625
32) L7 AR-1260-2	6.288	5.379	130.6E6	199.0E6	472.068	452.345
33) L7 AR-1260-3	6.638	5.520	104.3E6	193.6E6	523.451	466.408
34) L7 AR-1260-4	6.853	5.981	114.0E6	167.0E6	530.677	464.171
35) L7 AR-1260-5	7.158	6.225	214.0E6	367.3E6	493.241	437.132

(f)=RT Delta > 1/2 Window (#)=Amounts differ by > 25% (m)=manual int.

Data Path : Z:\pestpcbsrv\HPCHEM1\ECD\_Q\Data\PQ102025\  
 Data File : PQ071008.D  
 Signal(s) : Signal #1: ECD1A.ch Signal #2: ECD2B.ch  
 Acq On : 20 Oct 2025 10:18  
 Operator : YP\AJ  
 Sample : AR1660CCC500  
 Misc :  
 ALS Vial : 3 Sample Multiplier: 1

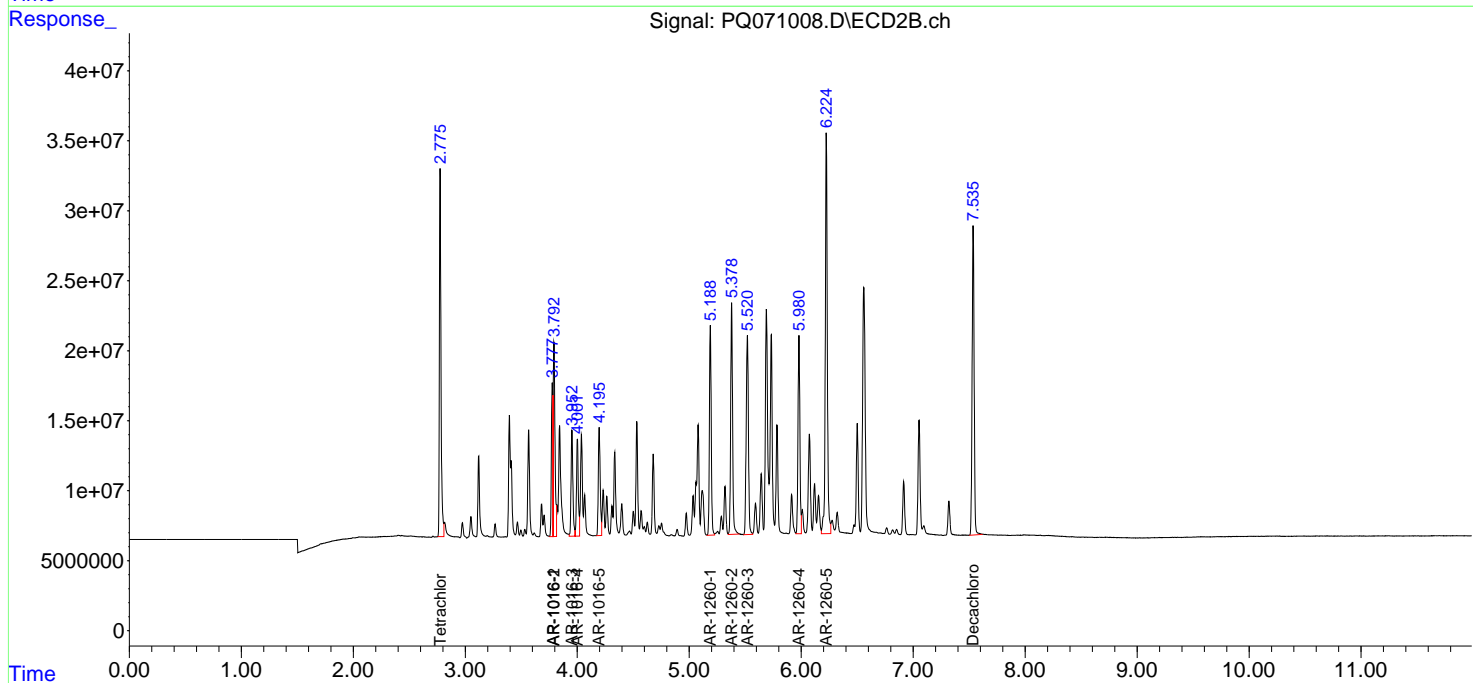
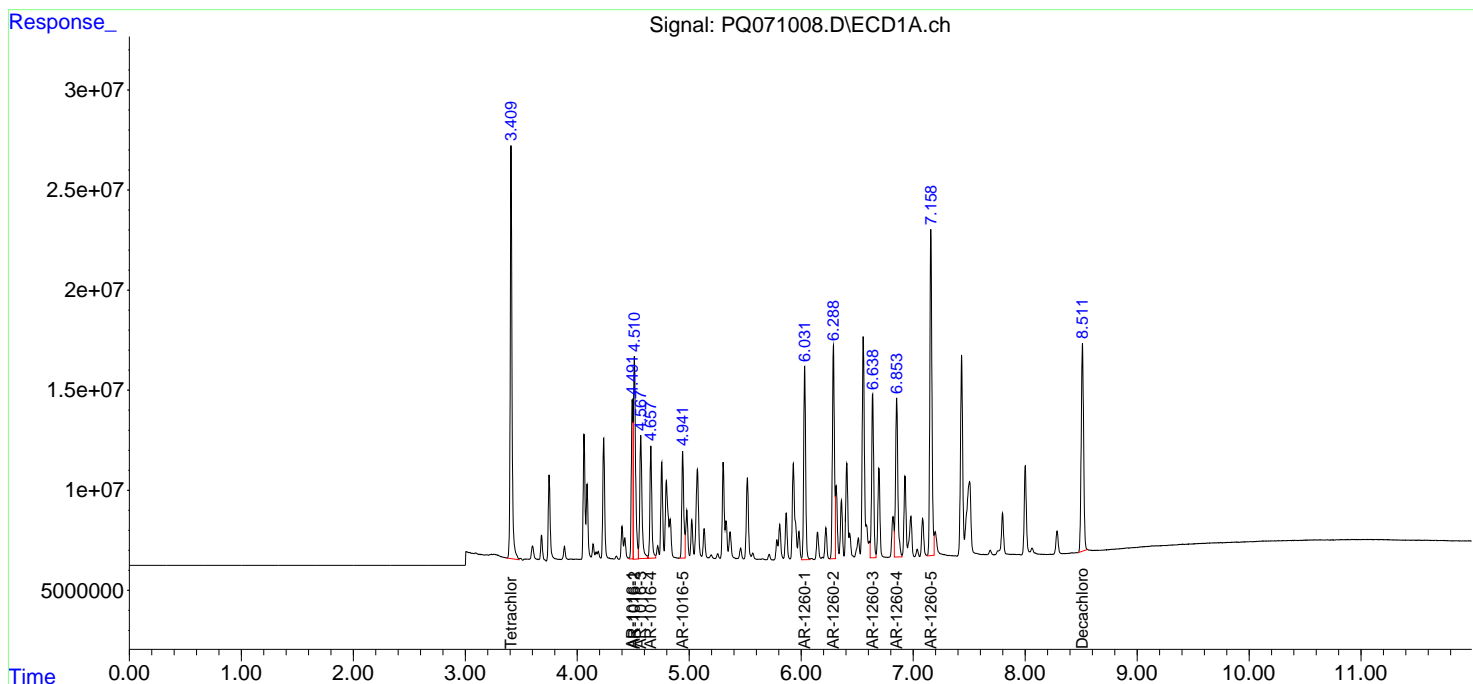
**Instrument :**  
 ECD\_Q  
**ClientSampleId :**  
 AR1660CCC500

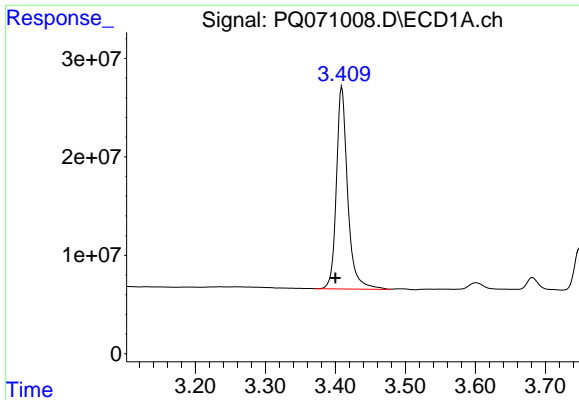
**Manual Integrations**  
**APPROVED**

Reviewed By :Yogesh Patel 10/21/2025  
 Supervised By :mohammad ahmed 10/25/2025

Integration File signal 1: autoint1.e  
 Integration File signal 2: autoint2.e  
 Quant Time: Oct 21 07:21:54 2025  
 Quant Method : Z:\pestpcbsrv\HPCHEM1\ECD\_Q\Method\PQ101025.M  
 Quant Title : GC EXTRACTABLES  
 QLast Update : Sat Oct 11 01:55:41 2025  
 Response via : Initial Calibration  
 Integrator: ChemStation

Volume Inj. : 2 µl  
 Signal #1 Phase : ZB-MR1 Signal #2 Phase: ZB-MR2  
 Signal #1 Info : 30Mx0.32mmx 0.50µ Signal #2 Info : 30M x 0.32mm x 0.25µm

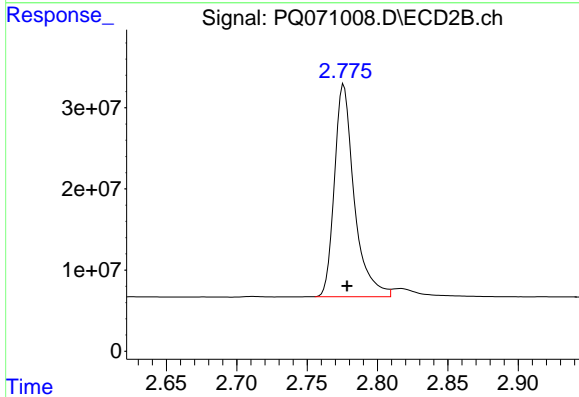




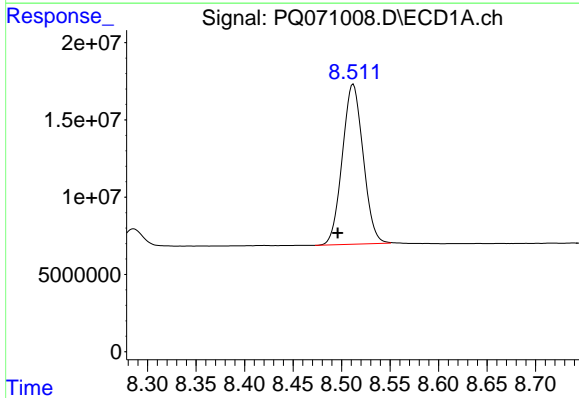
#1 Tetrachloro-m-xylene  
 R.T.: 3.409 min  
 Delta R.T.: 0.009 min  
 Response: 230552166  
 Conc: 53.00 ng/ml

Instrument : ECD\_Q  
 Client Sample Id : AR1660CCC500

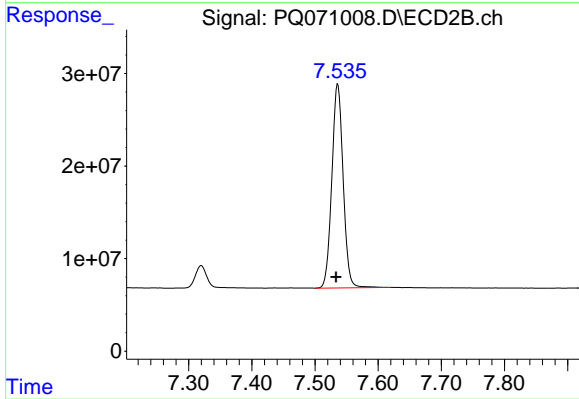
**Manual Integrations**  
**APPROVED**  
 Reviewed By :Yogesh Patel 10/21/2025  
 Supervised By :mohammad ahmed 10/25/2025



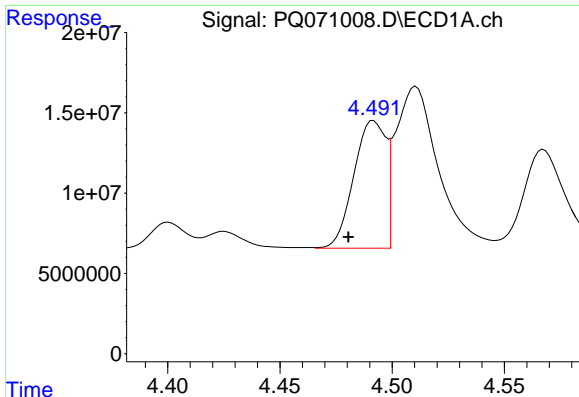
#1 Tetrachloro-m-xylene  
 R.T.: 2.776 min  
 Delta R.T.: -0.002 min  
 Response: 255977124  
 Conc: 50.39 ng/ml



#2 Decachlorobiphenyl  
 R.T.: 8.512 min  
 Delta R.T.: 0.016 min  
 Response: 154786652  
 Conc: 53.30 ng/ml



#2 Decachlorobiphenyl  
 R.T.: 7.536 min  
 Delta R.T.: 0.003 min  
 Response: 274287288  
 Conc: 54.32 ng/ml



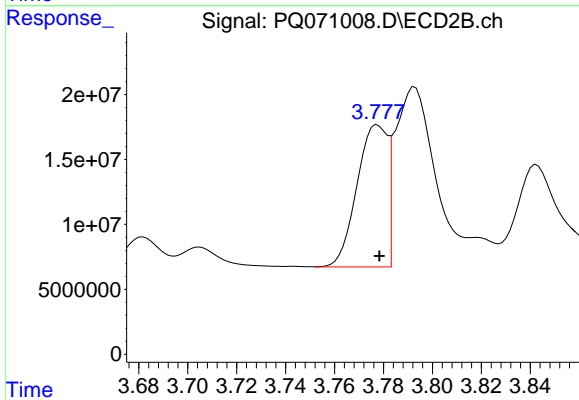
#3 AR-1016-1

R.T.: 4.492 min  
 Delta R.T.: 0.011 min  
 Response: 78731379  
 Conc: 479.65 ng/ml

Instrument :  
 ECD\_Q  
 ClientSampleId :  
 AR1660CCC500

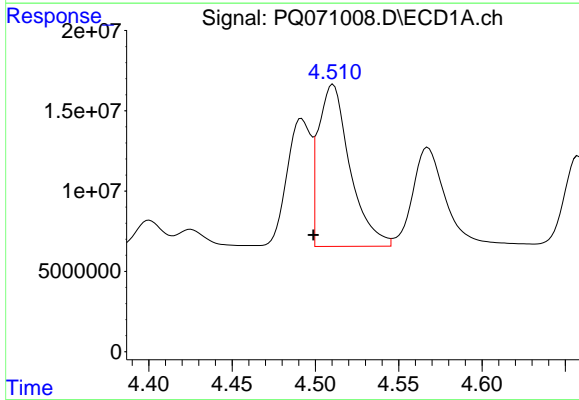
Manual Integrations  
 APPROVED

Reviewed By :Yogesh Patel 10/21/2025  
 Supervised By :mohammad ahmed 10/25/2025



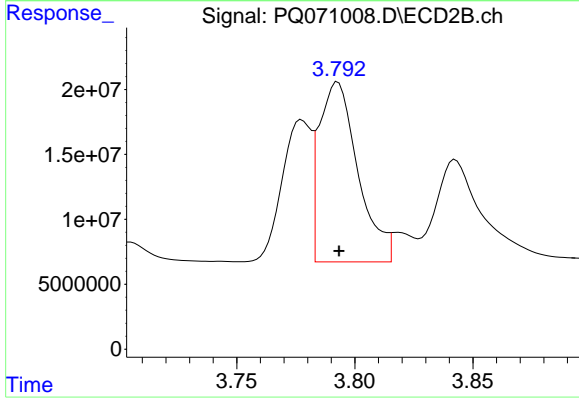
#3 AR-1016-1

R.T.: 3.778 min  
 Delta R.T.: 0.000 min  
 Response: 93916390  
 Conc: 419.27 ng/ml



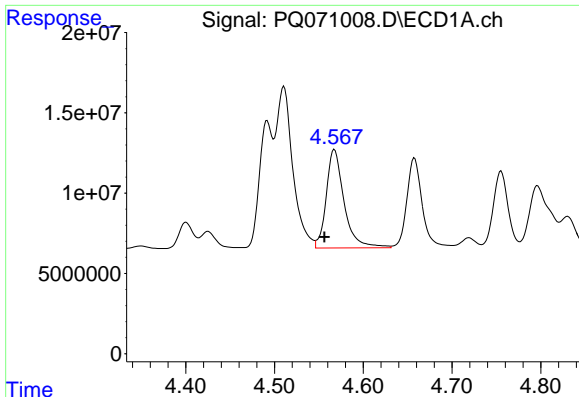
#4 AR-1016-2

R.T.: 4.510 min  
 Delta R.T.: 0.011 min  
 Response: 130319752  
 Conc: 508.48 ng/ml m



#4 AR-1016-2

R.T.: 3.793 min  
 Delta R.T.: 0.000 min  
 Response: 158160387  
 Conc: 465.01 ng/ml



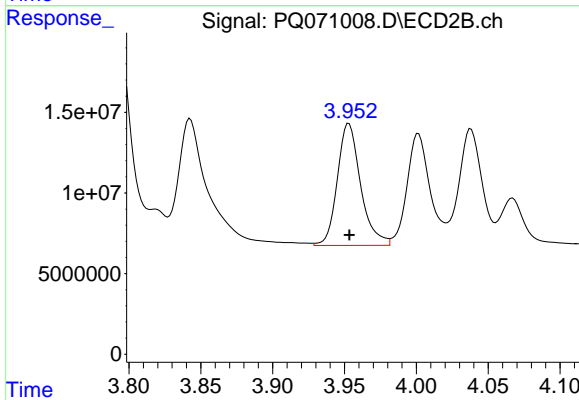
#5 AR-1016-3

R.T.: 4.567 min  
 Delta R.T.: 0.011 min  
 Response: 85404633  
 Conc: 536.74 ng/ml

Instrument :  
 ECD\_Q  
 ClientSampleId :  
 AR1660CCC500

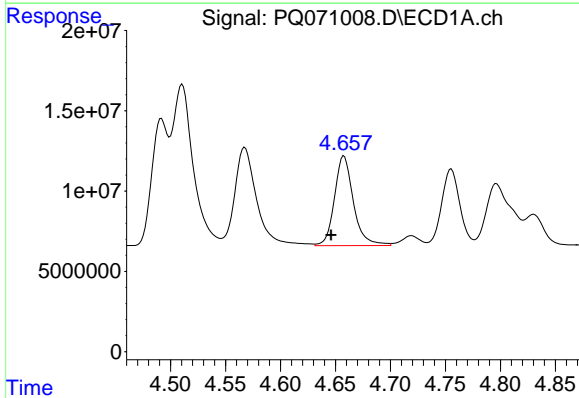
Manual Integrations  
 APPROVED

Reviewed By :Yogesh Patel 10/21/2025  
 Supervised By :mohammad ahmed 10/25/2025



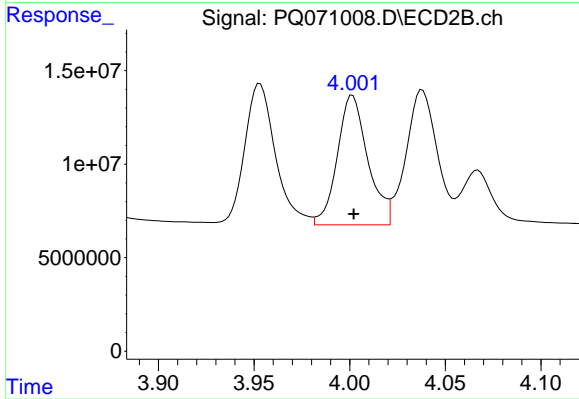
#5 AR-1016-3

R.T.: 3.953 min  
 Delta R.T.: 0.000 min  
 Response: 85218692  
 Conc: 468.60 ng/ml



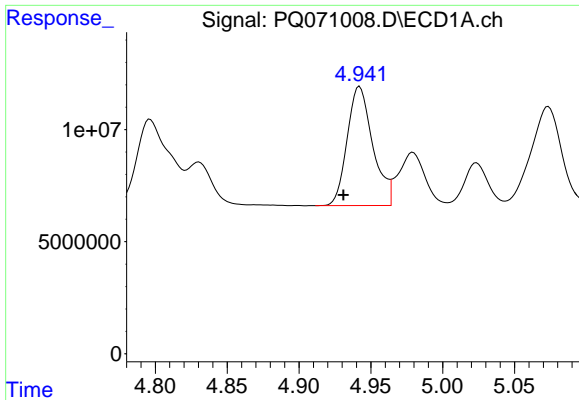
#6 AR-1016-4

R.T.: 4.658 min  
 Delta R.T.: 0.012 min  
 Response: 66986154  
 Conc: 515.56 ng/ml



#6 AR-1016-4

R.T.: 4.001 min  
 Delta R.T.: 0.000 min  
 Response: 77104461  
 Conc: 489.82 ng/ml



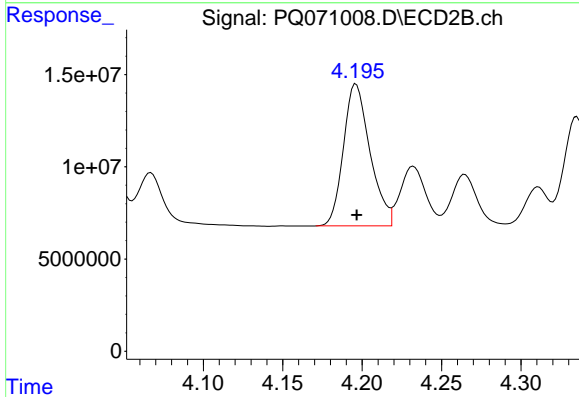
#7 AR-1016-5

R.T.: 4.942 min  
 Delta R.T.: 0.011 min  
 Response: 65865182  
 Conc: 511.36 ng/ml

Instrument :  
 ECD\_Q  
 ClientSampleId :  
 AR1660CCC500

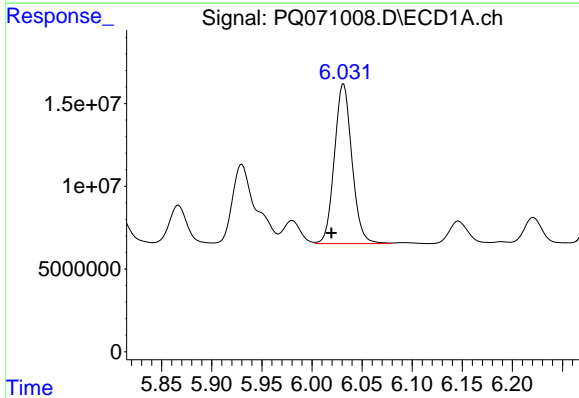
Manual Integrations  
 APPROVED

Reviewed By :Yogesh Patel 10/21/2025  
 Supervised By :mohammad ahmed 10/25/2025



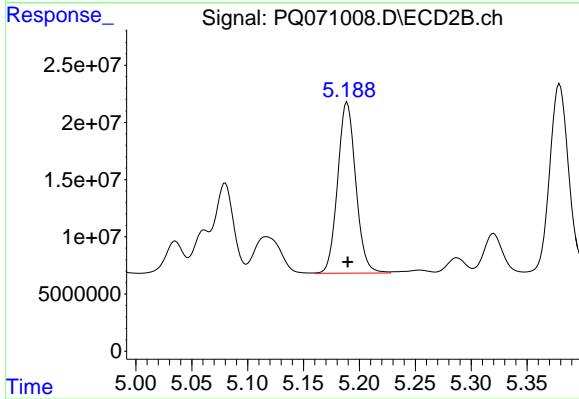
#7 AR-1016-5

R.T.: 4.196 min  
 Delta R.T.: 0.000 min  
 Response: 89640872  
 Conc: 467.26 ng/ml



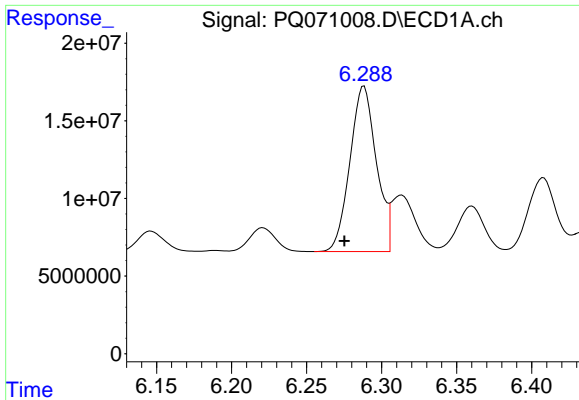
#31 AR-1260-1

R.T.: 6.032 min  
 Delta R.T.: 0.012 min  
 Response: 117627257  
 Conc: 501.67 ng/ml



#31 AR-1260-1

R.T.: 5.189 min  
 Delta R.T.: 0.000 min  
 Response: 168895136  
 Conc: 468.62 ng/ml



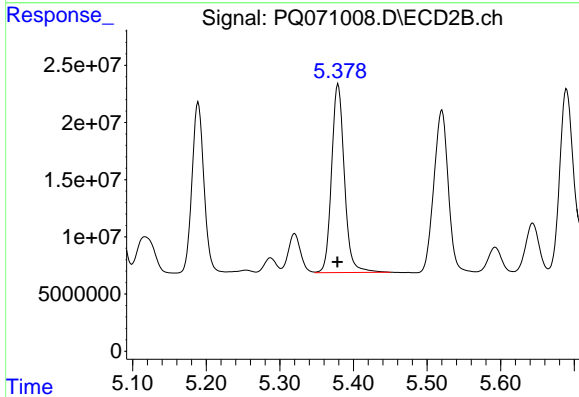
#32 AR-1260-2

R.T.: 6.288 min  
 Delta R.T.: 0.013 min  
 Response: 130578290  
 Conc: 472.07 ng/ml

Instrument :  
 ECD\_Q  
 ClientSampleId :  
 AR1660CCC500

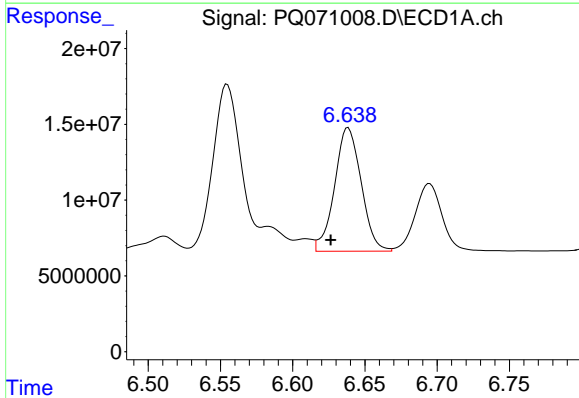
Manual Integrations  
 APPROVED

Reviewed By :Yogesh Patel 10/21/2025  
 Supervised By :mohammad ahmed 10/25/2025



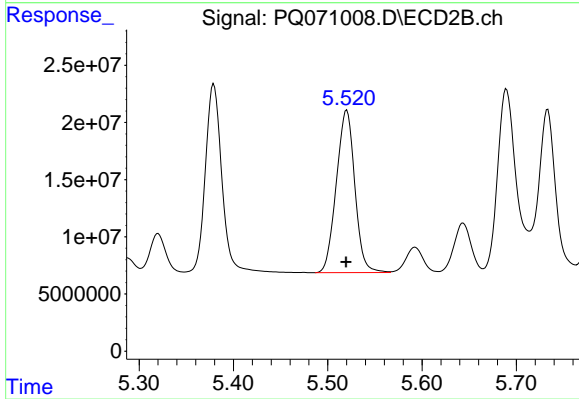
#32 AR-1260-2

R.T.: 5.379 min  
 Delta R.T.: 0.000 min  
 Response: 199028852  
 Conc: 452.34 ng/ml



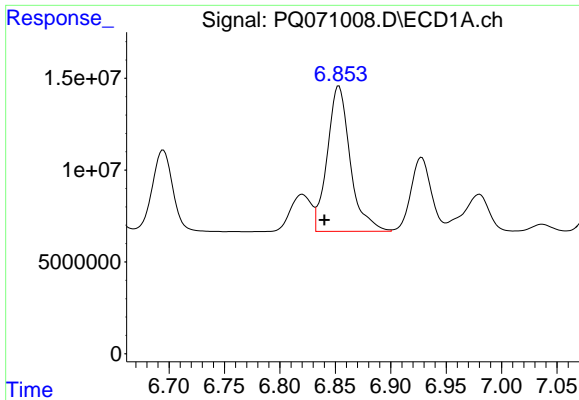
#33 AR-1260-3

R.T.: 6.638 min  
 Delta R.T.: 0.012 min  
 Response: 104328129  
 Conc: 523.45 ng/ml



#33 AR-1260-3

R.T.: 5.520 min  
 Delta R.T.: 0.000 min  
 Response: 193558906  
 Conc: 466.41 ng/ml



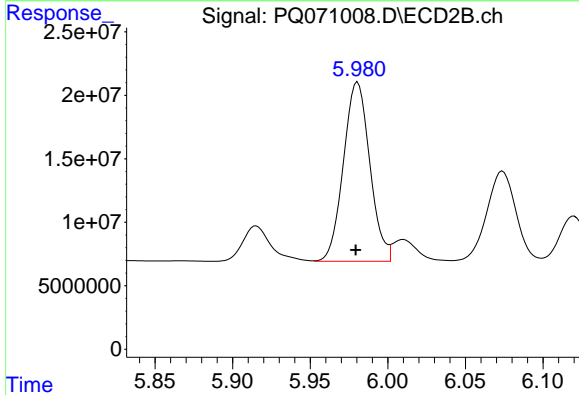
#34 AR-1260-4

R.T.: 6.853 min  
 Delta R.T.: 0.013 min  
 Response: 114033516  
 Conc: 530.68 ng/ml

Instrument :  
 ECD\_Q  
 ClientSampleId :  
 AR1660CCC500

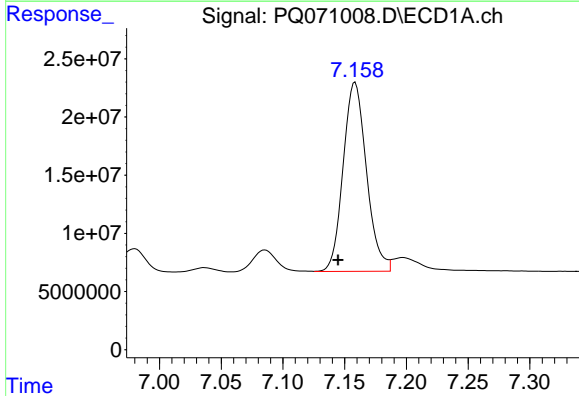
Manual Integrations  
 APPROVED

Reviewed By :Yogesh Patel 10/21/2025  
 Supervised By :mohammad ahmed 10/25/2025



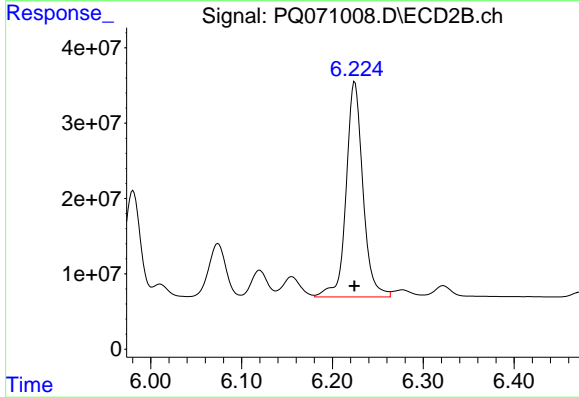
#34 AR-1260-4

R.T.: 5.981 min  
 Delta R.T.: 0.001 min  
 Response: 166991486  
 Conc: 464.17 ng/ml



#35 AR-1260-5

R.T.: 7.158 min  
 Delta R.T.: 0.014 min  
 Response: 213956682  
 Conc: 493.24 ng/ml



#35 AR-1260-5

R.T.: 6.225 min  
 Delta R.T.: 0.000 min  
 Response: 367314499  
 Conc: 437.13 ng/ml