

Data Path : Z:\voasrv\HPCHEM1\MSVOA_X\Data\VX102025\
 Data File : VX048229.D
 Acq On : 20 Oct 2025 10:59
 Operator : JC/MD
 Sample : VSTDIC001
 Misc : 5.0mL/MSVOA_X/WATER
 ALS Vial : 4 Sample Multiplier: 1

Instrument :
 MSVOA_X
 ClientSampleId :
 VSTDIC001

Manual Integrations
 APPROVED

Reviewed By : John Carlone 10/21/2025
 Supervised By : Semsettin Yesilyurt 10/21/2025

Quant Time: Oct 20 12:42:04 2025
 Quant Method : Z:\voasrv\HPCHEM1\MSVOA_X\Method\82X102025W.M
 Quant Title : SW846 8260
 QLast Update : Mon Oct 20 12:35:14 2025
 Response via : Initial Calibration

Compound	R.T.	QIon	Response	Conc	Units	Dev(Min)
Internal Standards						
1) Pentafluorobenzene	5.544	168	117157	50.000	ug/l	0.00
34) 1,4-Difluorobenzene	6.745	114	193186	50.000	ug/l	0.00
63) Chlorobenzene-d5	10.037	117	177252	50.000	ug/l	0.00
72) 1,4-Dichlorobenzene-d4	12.006	152	86943	50.000	ug/l	0.00
System Monitoring Compounds						
33) 1,2-Dichloroethane-d4	0.000	65	0d	0.000	ug/l	
Spiked Amount	50.000	Range	78 - 117	Recovery	=	0.000%#
35) Dibromofluoromethane	0.000	113	0d	0.000	ug/l	
Spiked Amount	50.000	Range	75 - 124	Recovery	=	0.000%#
50) Toluene-d8	0.000	98	0d	0.000	ug/l	
Spiked Amount	50.000	Range	92 - 112	Recovery	=	0.000%#
62) 4-Bromofluorobenzene	0.000	95	0d	0.000	ug/l	
Spiked Amount	50.000	Range	83 - 123	Recovery	=	0.000%#
Target Compounds						
						Qvalue
2) Dichlorodifluoromethane	1.173	85	1223	0.995	ug/l	82
3) Chloromethane	1.301	50	1186	0.796	ug/l #	62
4) Vinyl Chloride	1.380	62	1048	0.668	ug/l	92
6) Chloroethane	1.697	64	545	0.546	ug/l	91
7) Trichlorofluoromethane	1.898	101	1819	0.738	ug/l	98
8) Diethyl Ether	2.142	74	542	0.645	ug/l	81
9) 1,1,2-Trichlorotrifluo...	2.337	101	1199	0.864	ug/l	89
12) 1,1-Dichloroethene	2.325	96	1207	0.889	ug/l	88
14) Allyl chloride	2.666	41	2101	0.860	ug/l	96
15) Acrylonitrile	3.069	53	2984	5.171	ug/l	97
16) Acetone	2.380	43	3519	5.684	ug/l	98
17) Carbon Disulfide	2.520	76	4767	1.141	ug/l #	92
18) Methyl Acetate	2.703	43	1204	0.955	ug/l #	85
19) Methyl tert-butyl Ether	3.111	73	4437	1.085	ug/l	100
20) Methylene Chloride	2.794	84	1301	0.863	ug/l #	76
21) trans-1,2-Dichloroethene	3.099	96	1376	0.980	ug/l	96
22) Diisopropyl ether	3.745	45	3977	0.832	ug/l #	26
23) Vinyl Acetate	3.727	43	14769	4.131	ug/l	95
24) 1,1-Dichloroethane	3.611	63	2615	0.964	ug/l	97
25) 2-Butanone	4.574	43	3638	5.043	ug/l	98
26) 2,2-Dichloropropane	4.465	77	2347	1.012	ug/l	84
27) cis-1,2-Dichloroethene	4.489	96	1598	0.959	ug/l	94
28) Bromochloromethane	4.879	49	908	0.726	ug/l #	69
29) Tetrahydrofuran	5.007	42	2088	4.929	ug/l #	73
30) Chloroform	5.093	83	2688	0.941	ug/l	97
32) 1,1,1-Trichloroethane	5.379	97	2459	1.048	ug/l #	50
36) 1,1-Dichloropropene	5.696	75	2173	1.151	ug/l #	62
37) Ethyl Acetate	4.727	43	1772m	1.174	ug/l	
38) Carbon Tetrachloride	5.672	117	2513m	1.159	ug/l	
39) Methylcyclohexane	7.373	83	2128	0.999	ug/l	94
40) Benzene	6.032	78	5767	1.028	ug/l #	89
41) Methacrylonitrile	4.916	41	741m	0.917	ug/l	
42) 1,2-Dichloroethane	6.080	62	2044	1.017	ug/l	87
43) Isopropyl Acetate	6.336	43	2548	1.006	ug/l #	85
44) Trichloroethene	7.117	130	1547	1.094	ug/l	83
45) 1,2-Dichloropropane	7.422	63	1195	0.842	ug/l	96

Data Path : Z:\voasrv\HPCHEM1\MSVOA_X\Data\VX102025\
 Data File : VX048229.D
 Acq On : 20 Oct 2025 10:59
 Operator : JC/MD
 Sample : VSTDIC001
 Misc : 5.0mL/MSVOA_X/WATER
 ALS Vial : 4 Sample Multiplier: 1

Instrument :
 MSVOA_X
 ClientSampleId :
 VSTDIC001

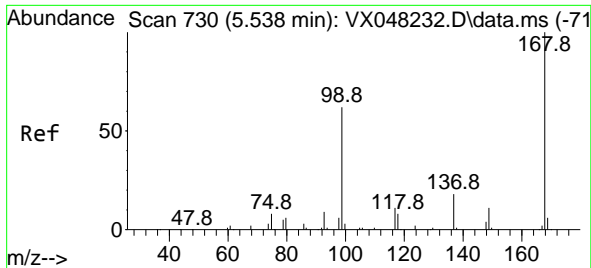
Manual Integrations
 APPROVED

Reviewed By : John Carlone 10/21/2025
 Supervised By : Semsettin Yesilyurt 10/21/2025

Quant Time: Oct 20 12:42:04 2025
 Quant Method : Z:\voasrv\HPCHEM1\MSVOA_X\Method\82X102025W.M
 Quant Title : SW846 8260
 QLast Update : Mon Oct 20 12:35:14 2025
 Response via : Initial Calibration

Compound	R.T.	QIon	Response	Conc	Units	Dev(Min)
46) Dibromomethane	7.574	93	1032	1.011	ug/l	95
47) Bromodichloromethane	7.812	83	2204	0.999	ug/l #	79
48) Methyl methacrylate	7.684	41	1283	0.989	ug/l	95
49) 1,4-Dioxane	7.665	88	255	21.840	ug/l #	34
51) 4-Methyl-2-Pentanone	8.562	43	7066	5.011	ug/l	91
52) Toluene	8.708	92	3403	1.010	ug/l	95
53) t-1,3-Dichloropropene	8.970	75	1844	0.892	ug/l #	74
54) cis-1,3-Dichloropropene	8.360	75	2250	0.998	ug/l	90
55) 1,1,2-Trichloroethane	9.147	97	1229	0.977	ug/l #	85
56) Ethyl methacrylate	9.104	69	1616	0.945	ug/l	96
57) 1,3-Dichloropropane	9.299	76	2174	0.989	ug/l	93
58) 2-Chloroethyl Vinyl ether	8.232	63	2970	3.381	ug/l	100
59) 2-Hexanone	9.421	43	4456	4.518	ug/l	92
60) Dibromochloromethane	9.507	129	1862	1.183	ug/l	95
61) 1,2-Dibromoethane	9.598	107	1338	1.037	ug/l	98
64) Tetrachloroethene	9.257	164	1482	1.192	ug/l	92
65) Chlorobenzene	10.067	112	4073	1.051	ug/l	90
66) 1,1,1,2-Tetrachloroethane	10.147	131	1495	1.070	ug/l #	66
67) Ethyl Benzene	10.177	91	6752	1.016	ug/l	97
68) m/p-Xylenes	10.287	106	4589	1.854	ug/l	90
69) o-Xylene	10.628	106	2313	0.993	ug/l	99
70) Styrene	10.640	104	3737	0.932	ug/l	96
71) Bromoform	10.787	173	1198	1.168	ug/l #	99
73) Isopropylbenzene	10.945	105	6291	1.040	ug/l	93
74) N-amyl acetate	10.829	43	2137	0.947	ug/l #	90
75) 1,1,2,2-Tetrachloroethane	11.195	83	1718	1.003	ug/l	90
76) 1,2,3-Trichloropropane	11.220	75	1615m	1.216	ug/l	
77) Bromobenzene	11.183	156	1635	1.080	ug/l	91
78) n-propylbenzene	11.287	91	6956	0.949	ug/l	94
79) 2-Chlorotoluene	11.348	91	4477	1.010	ug/l	97
80) 1,3,5-Trimethylbenzene	11.433	105	5196	1.047	ug/l	97
82) 4-Chlorotoluene	11.439	91	5385	1.034	ug/l	99
83) tert-Butylbenzene	11.695	119	5439	1.085	ug/l	91
84) 1,2,4-Trimethylbenzene	11.738	105	4854	0.982	ug/l	99
85) sec-Butylbenzene	11.872	105	6589	1.075	ug/l	99
86) p-Isopropyltoluene	11.994	119	5812	1.125	ug/l	91
87) 1,3-Dichlorobenzene	11.951	146	3239	1.145	ug/l	96
88) 1,4-Dichlorobenzene	12.024	146	3727m	1.270	ug/l	
89) n-Butylbenzene	12.317	91	5787	1.202	ug/l	98
90) Hexachloroethane	12.518	117	1182	1.084	ug/l	77
91) 1,2-Dichlorobenzene	12.317	146	3135	1.172	ug/l	96
92) 1,2-Dibromo-3-Chloropr...	12.933	75	290	0.926	ug/l	79
93) 1,2,4-Trichlorobenzene	13.573	180	2505	1.587	ug/l	90
94) Hexachlorobutadiene	13.707	225	1658	2.724	ug/l	97
95) Naphthalene	13.762	128	5116	1.230	ug/l	98
96) 1,2,3-Trichlorobenzene	13.945	180	2006	1.377	ug/l	100

(#) = qualifier out of range (m) = manual integration (+) = signals summed



#1
 Pentafluorobenzene
 Concen: 50.000 ug/l
 RT: 5.544 min Scan# 71
 Delta R.T. -0.000 min
 Lab File: VX048229.D
 Acq: 20 Oct 2025 10:59

Instrument :

MSVOA_X

ClientSampleId :

VSTDIC001

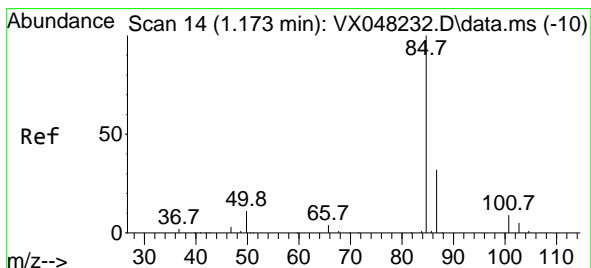
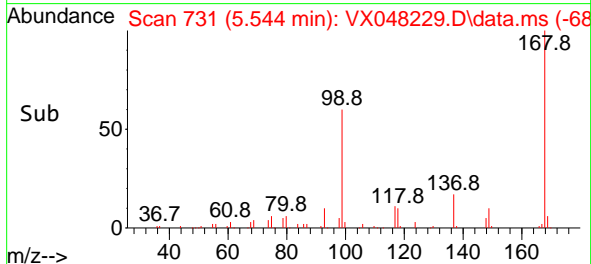
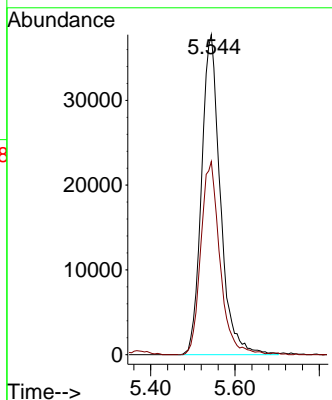
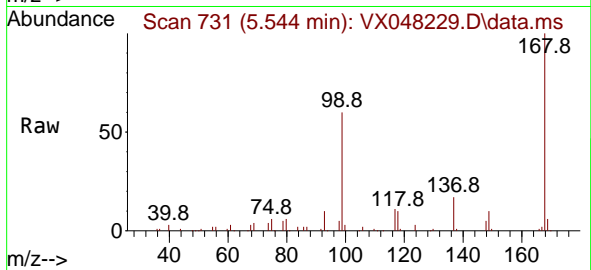
Tgt Ion:168 Resp: 11715
 Ion Ratio Lower Upper
 168 100
 99 60.3 46.4 69.6

Manual Integrations

APPROVED

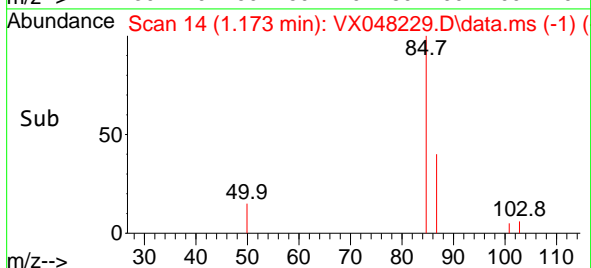
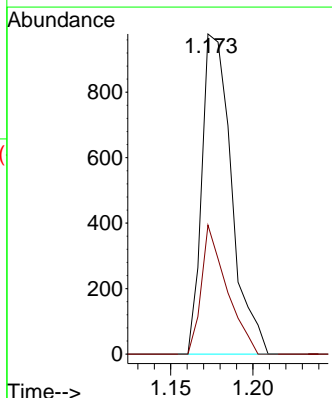
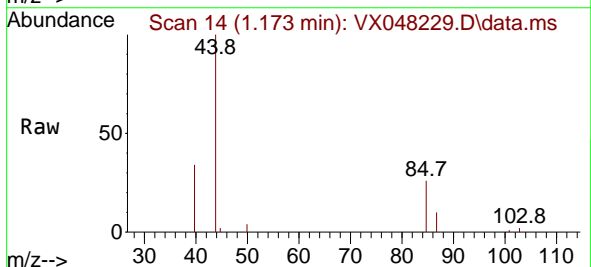
Reviewed By :John Carlone 10/21/2025

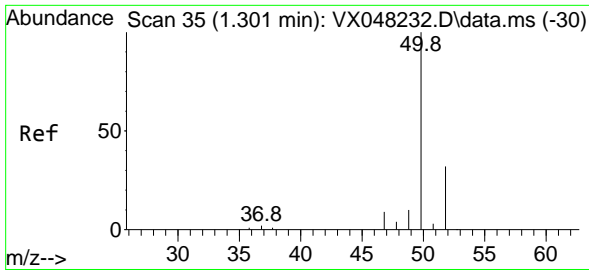
Supervised By :Semsettin Yesilyurt 10/21/2025



#2
 Dichlorodifluoromethane
 Concen: 0.995 ug/l
 RT: 1.173 min Scan# 14
 Delta R.T. 0.000 min
 Lab File: VX048229.D
 Acq: 20 Oct 2025 10:59

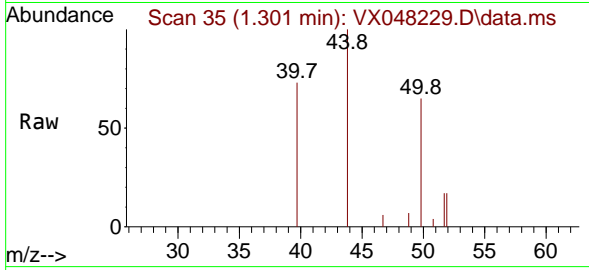
Tgt Ion: 85 Resp: 1223
 Ion Ratio Lower Upper
 85 100
 87 40.3 15.3 45.9





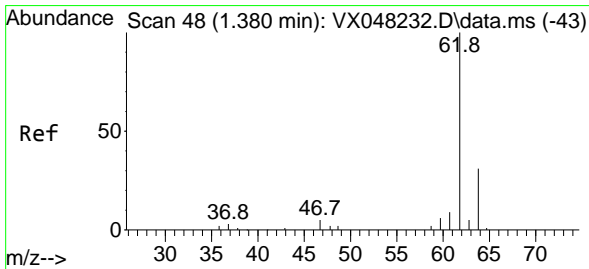
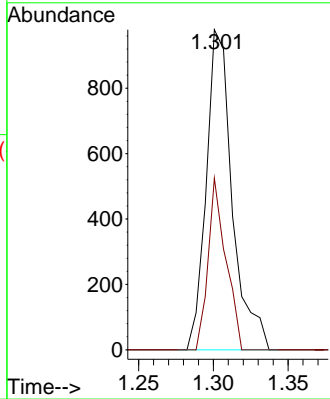
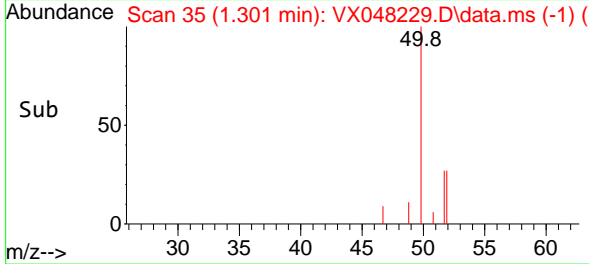
#3
 Chloromethane
 Concen: 0.796 ug/l
 RT: 1.301 min Scan# 31
 Delta R.T. 0.000 min
 Lab File: VX048229.D
 Acq: 20 Oct 2025 10:59

Instrument : MSVOA_X
 ClientSampleId : VSTDIC001

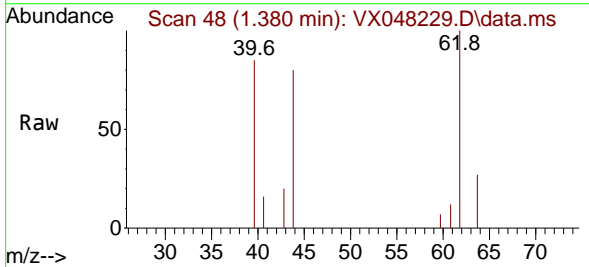


Tgt Ion: 50 Resp: 1180
 Ion Ratio Lower Upper
 50 100
 52 53.6 25.9 38.9

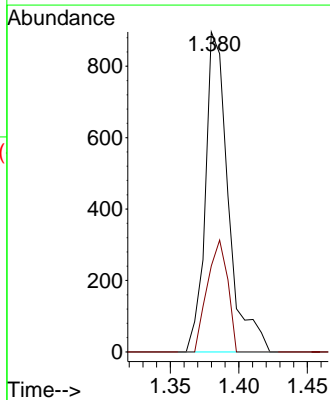
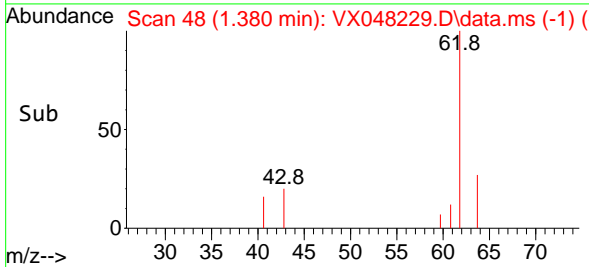
Manual Integrations
APPROVED
 Reviewed By :John Carlone 10/21/2025
 Supervised By :Semsettin Yesilyurt 10/21/2025

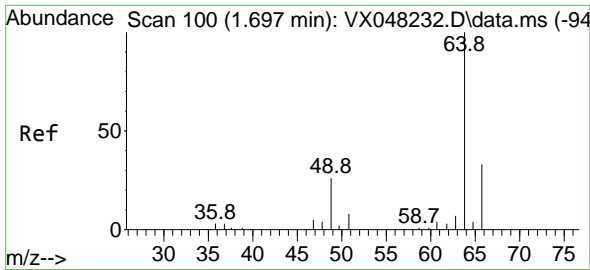


#4
 Vinyl Chloride
 Concen: 0.668 ug/l
 RT: 1.380 min Scan# 48
 Delta R.T. 0.000 min
 Lab File: VX048229.D
 Acq: 20 Oct 2025 10:59



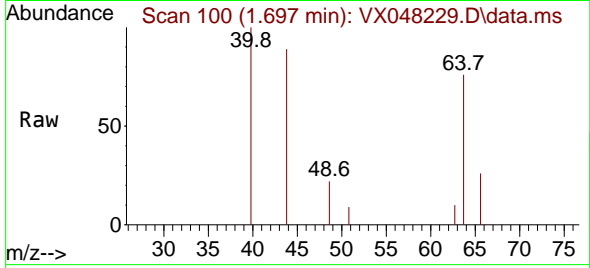
Tgt Ion: 62 Resp: 1048
 Ion Ratio Lower Upper
 62 100
 64 26.9 25.1 37.7





#6
 Chloroethane
 Concen: 0.546 ug/l
 RT: 1.697 min Scan# 100
 Delta R.T. 0.000 min
 Lab File: VX048229.D
 Acq: 20 Oct 2025 10:59

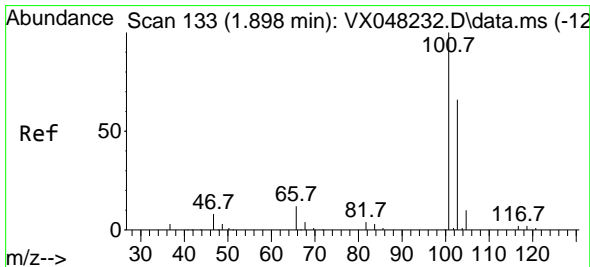
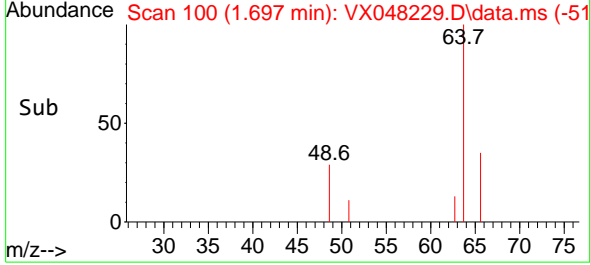
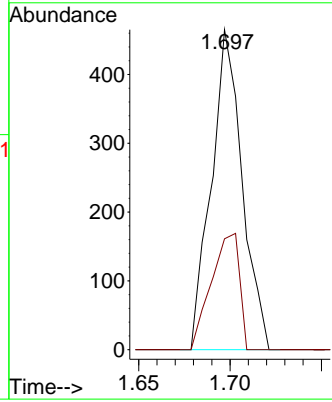
Instrument : MSVOA_X
 ClientSampleId : VSTDIC001



Tgt Ion: 64 Resp: 549
 Ion Ratio Lower Upper
 64 100
 66 34.6 23.9 35.9

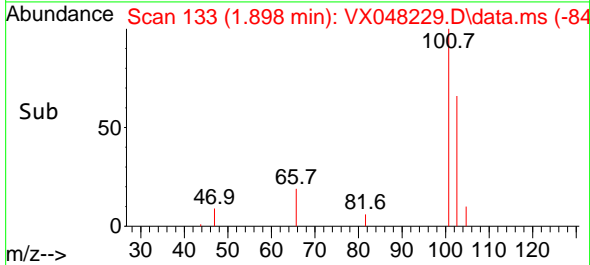
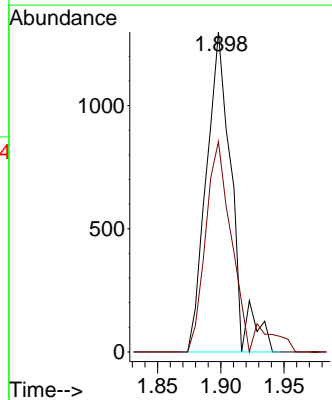
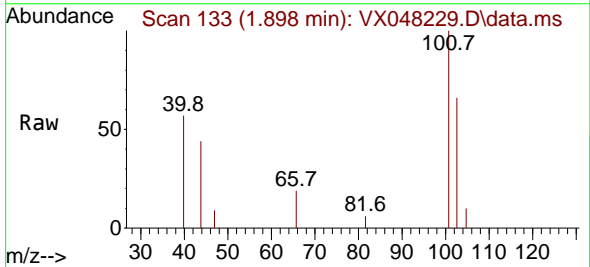
Manual Integrations
APPROVED

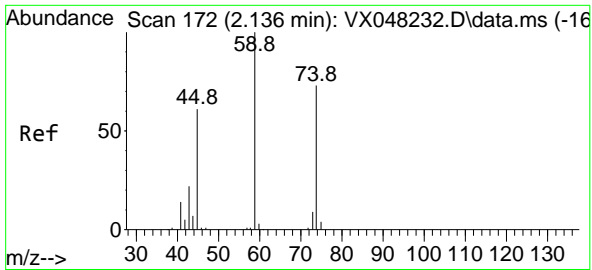
Reviewed By :John Carlone 10/21/2025
 Supervised By :Semsettin Yesilyurt 10/21/2025



#7
 Trichlorofluoromethane
 Concen: 0.738 ug/l
 RT: 1.898 min Scan# 133
 Delta R.T. 0.000 min
 Lab File: VX048229.D
 Acq: 20 Oct 2025 10:59

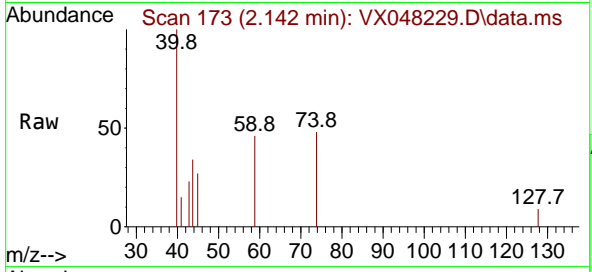
Tgt Ion:101 Resp: 1819
 Ion Ratio Lower Upper
 101 100
 103 65.8 51.6 77.4





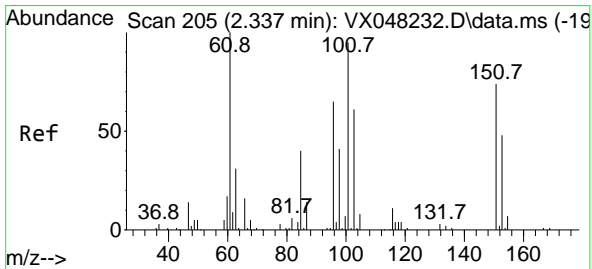
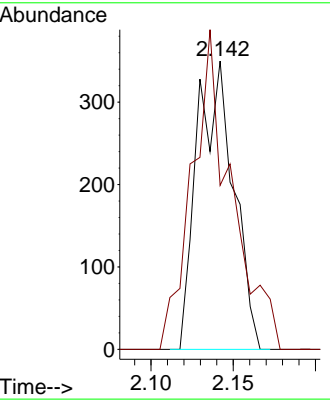
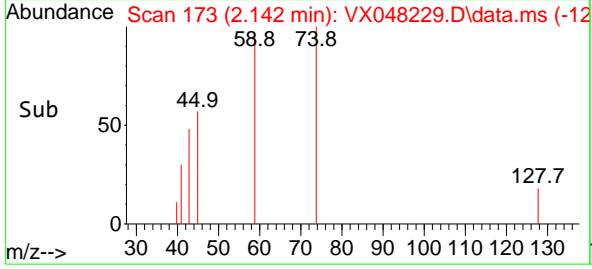
#8
 Diethyl Ether
 Concen: 0.645 ug/l
 RT: 2.142 min Scan# 172
 Delta R.T. 0.006 min
 Lab File: VX048229.D
 Acq: 20 Oct 2025 10:59

Instrument : MSVOA_X
 ClientSampleId : VSTDIC001

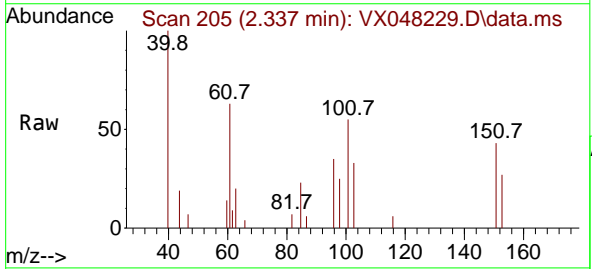


Tgt Ion: 74 Resp: 54.2
 Ion Ratio Lower Upper
 74 100
 45 118.5 50.0 149.8

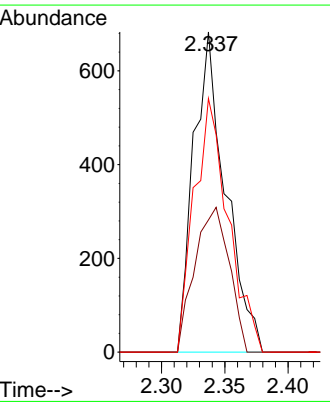
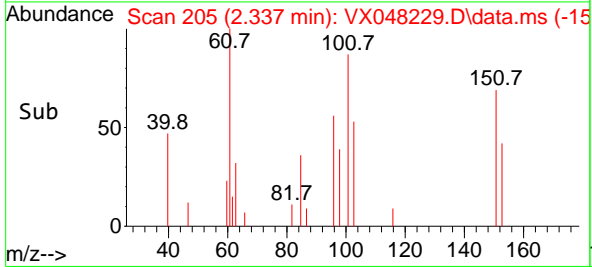
Manual Integrations
APPROVED
 Reviewed By :John Carlone 10/21/2025
 Supervised By :Semsettin Yesilyurt 10/21/2025

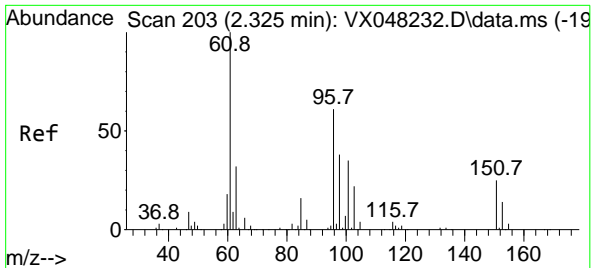


#9
 1,1,2-Trichlorotrifluoroethane
 Concen: 0.864 ug/l
 RT: 2.337 min Scan# 205
 Delta R.T. 0.000 min
 Lab File: VX048229.D
 Acq: 20 Oct 2025 10:59



Tgt Ion:101 Resp: 1199
 Ion Ratio Lower Upper
 101 100
 85 48.9 35.6 53.4
 151 84.2 58.0 87.0





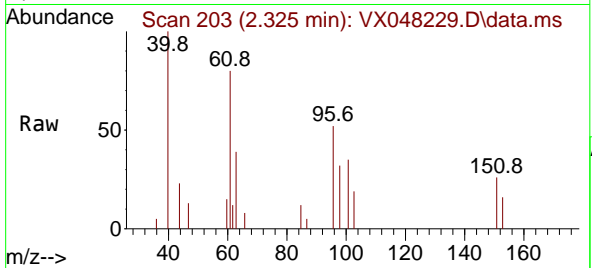
#12
 1,1-Dichloroethene
 Concen: 0.889 ug/l
 RT: 2.325 min Scan# 203
 Delta R.T. 0.000 min
 Lab File: VX048229.D
 Acq: 20 Oct 2025 10:59

Instrument :

MSVOA_X

Client SampleID :

VSTDIC001



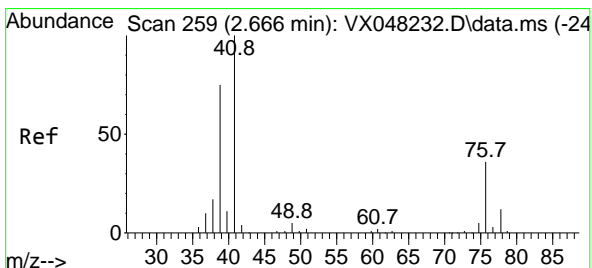
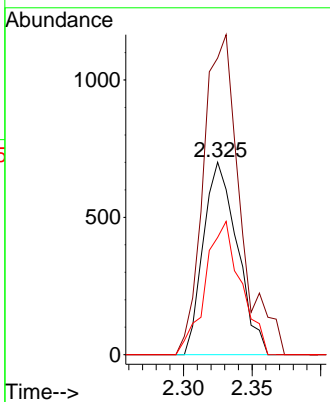
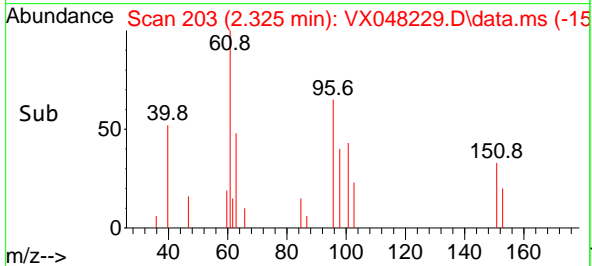
Tgt Ion: 96 Resp: 120
 Ion Ratio Lower Upper
 96 100
 61 154.1 139.0 208.6
 98 60.9 52.4 78.6

Manual Integrations

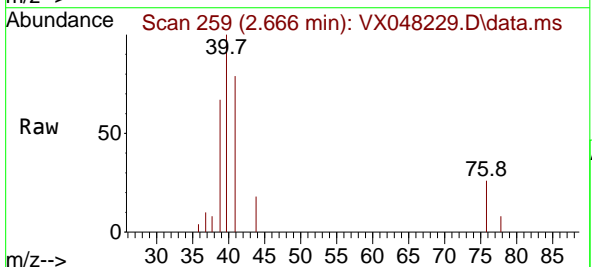
APPROVED

Reviewed By :John Carlone 10/21/2025

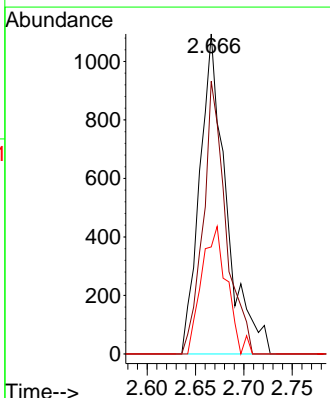
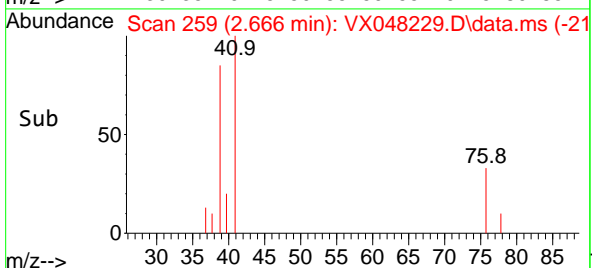
Supervised By :Semsettin Yesilyurt 10/21/2025

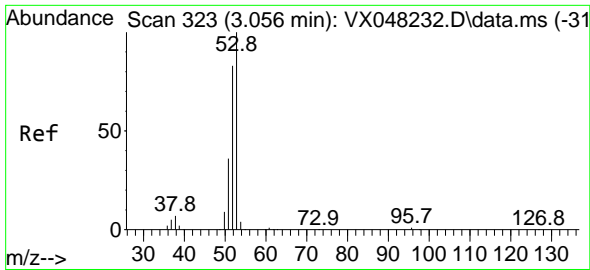


#14
 Allyl chloride
 Concen: 0.860 ug/l
 RT: 2.666 min Scan# 259
 Delta R.T. 0.000 min
 Lab File: VX048229.D
 Acq: 20 Oct 2025 10:59



Tgt Ion: 41 Resp: 2101
 Ion Ratio Lower Upper
 41 100
 39 72.1 56.0 84.0
 76 37.8 27.5 41.3





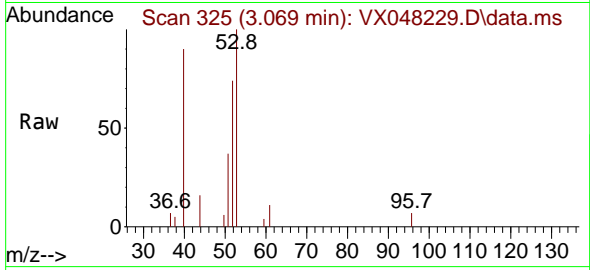
#15
 Acrylonitrile
 Concen: 5.171 ug/l
 RT: 3.069 min Scan# 31
 Delta R.T. 0.012 min
 Lab File: VX048229.D
 Acq: 20 Oct 2025 10:59

Instrument :

MSVOA_X

ClientSampleId :

VSTDICC001



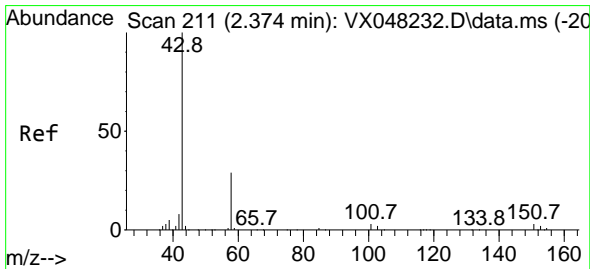
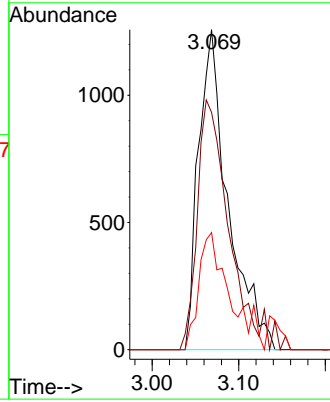
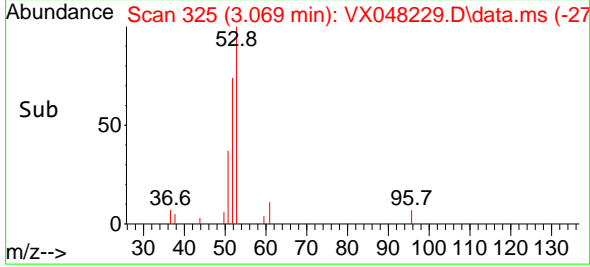
Tgt Ion: 53 Resp: 2984
 Ion Ratio Lower Upper
 53 100
 52 80.3 66.1 99.1
 51 37.8 29.0 43.4

Manual Integrations

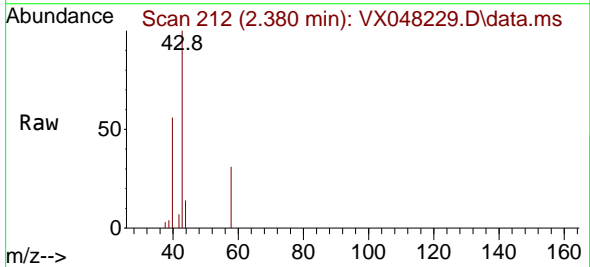
APPROVED

Reviewed By :John Carlone 10/21/2025

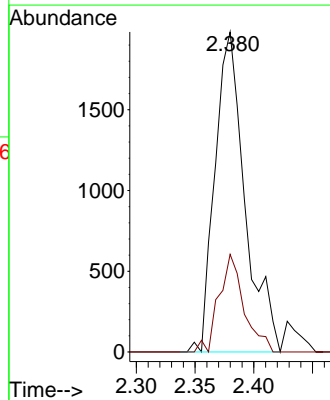
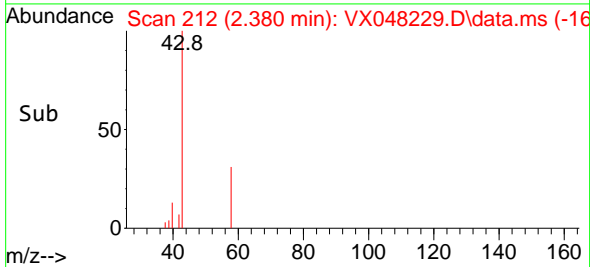
Supervised By :Semsettin Yesilyurt 10/21/2025

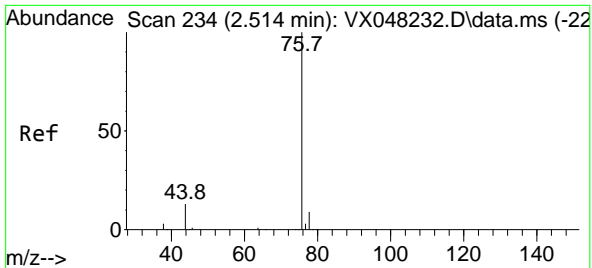


#16
 Acetone
 Concen: 5.684 ug/l
 RT: 2.380 min Scan# 212
 Delta R.T. 0.006 min
 Lab File: VX048229.D
 Acq: 20 Oct 2025 10:59



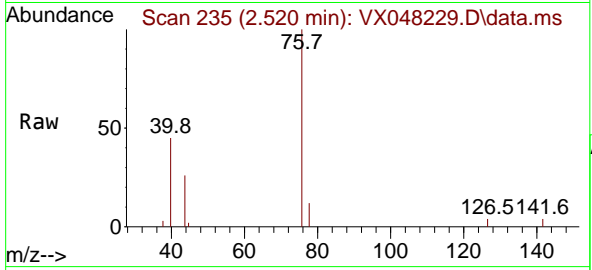
Tgt Ion: 43 Resp: 3519
 Ion Ratio Lower Upper
 43 100
 58 30.5 23.4 35.2





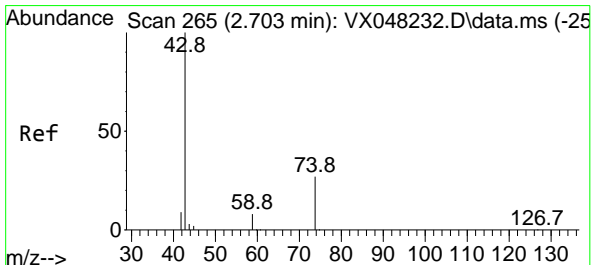
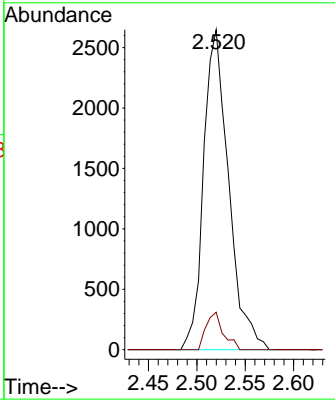
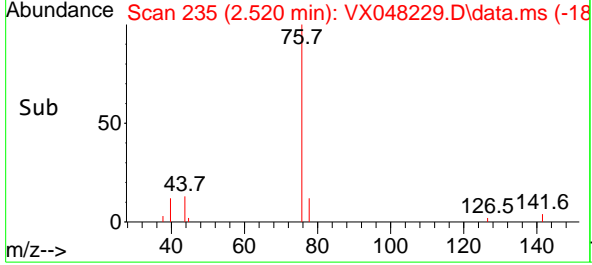
#17
 Carbon Disulfide
 Concen: 1.141 ug/l
 RT: 2.520 min Scan# 21
 Delta R.T. 0.006 min
 Lab File: VX048229.D
 Acq: 20 Oct 2025 10:59

Instrument : MSVOA_X
 Client Sample Id : VSTDIC001

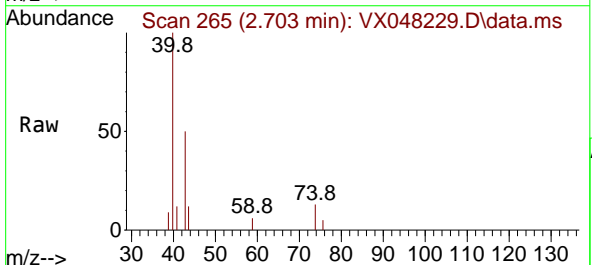


Tgt Ion: 76 Resp: 476
 Ion Ratio Lower Upper
 76 100
 78 11.7 7.1 10.7

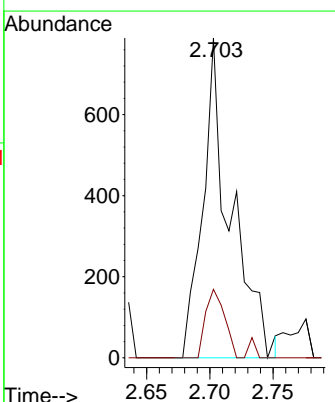
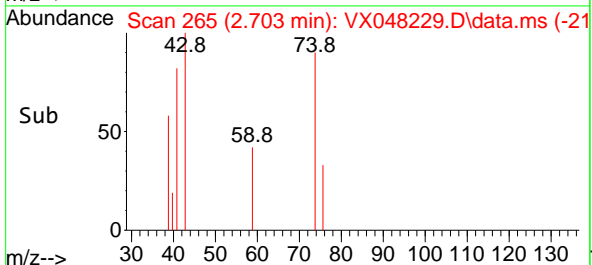
Manual Integrations
APPROVED
 Reviewed By : John Carlone 10/21/2025
 Supervised By : Semsettin Yesilyurt 10/21/2025

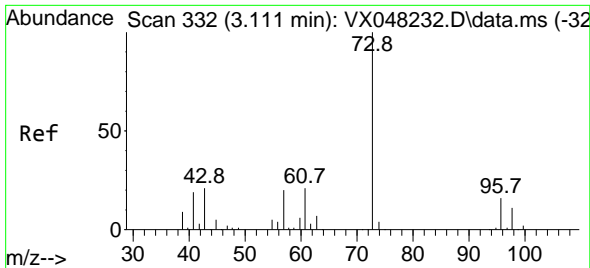


#18
 Methyl Acetate
 Concen: 0.955 ug/l
 RT: 2.703 min Scan# 265
 Delta R.T. 0.006 min
 Lab File: VX048229.D
 Acq: 20 Oct 2025 10:59



Tgt Ion: 43 Resp: 1204
 Ion Ratio Lower Upper
 43 100
 74 14.6 17.5 26.3





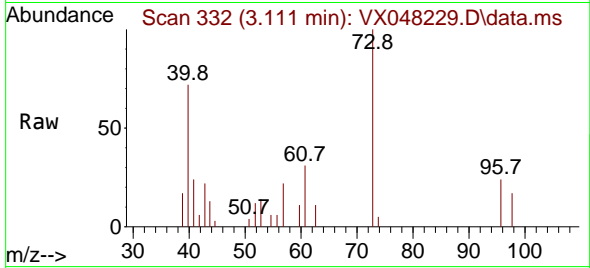
#19
 Methyl tert-butyl Ether
 Concen: 1.085 ug/l
 RT: 3.111 min Scan# 311
 Delta R.T. 0.000 min
 Lab File: VX048229.D
 Acq: 20 Oct 2025 10:59

Instrument :

MSVOA_X

ClientSampleId :

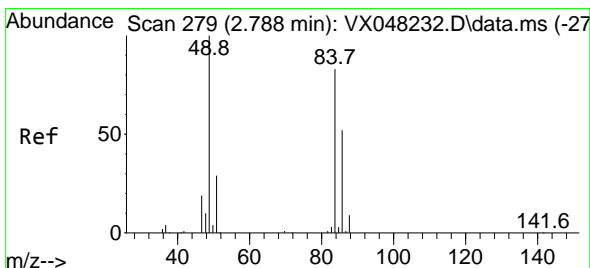
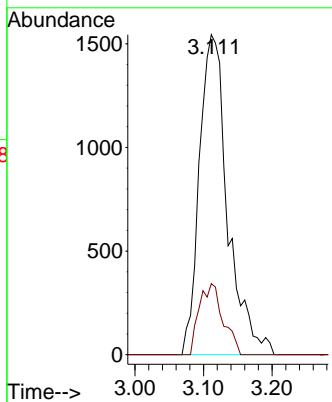
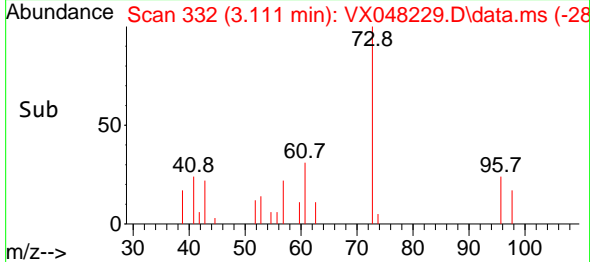
VSTDIC001



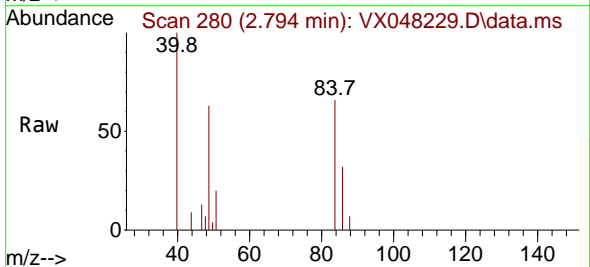
Tgt Ion: 73 Resp: 443
 Ion Ratio Lower Upper
 73 100
 57 22.2 17.7 26.5

Manual Integrations
 APPROVED

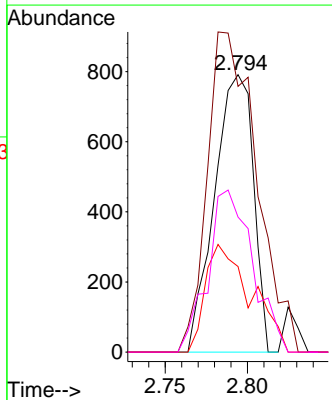
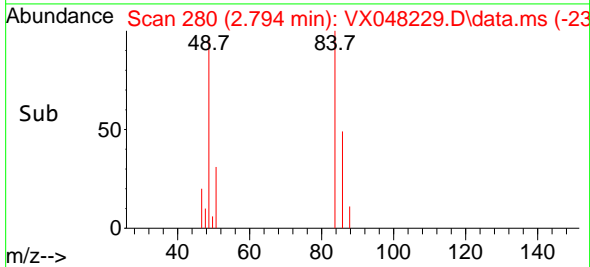
Reviewed By :John Carlone 10/21/2025
 Supervised By :Semsettin Yesilyurt 10/21/2025

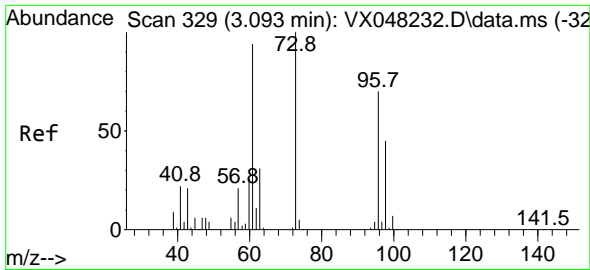


#20
 Methylene Chloride
 Concen: 0.863 ug/l
 RT: 2.794 min Scan# 280
 Delta R.T. 0.006 min
 Lab File: VX048229.D
 Acq: 20 Oct 2025 10:59



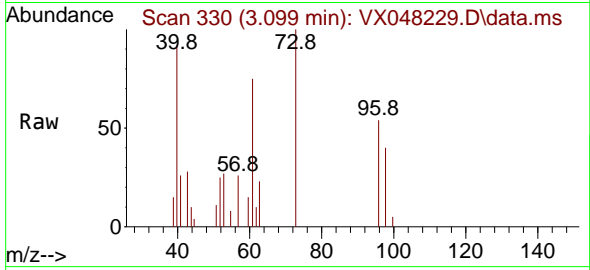
Tgt Ion: 84 Resp: 1301
 Ion Ratio Lower Upper
 84 100
 49 95.8 104.1 156.1#
 51 30.8 31.3 46.9#
 86 48.7 51.3 76.9#





#21
 trans-1,2-Dichloroethene
 Concen: 0.980 ug/l
 RT: 3.099 min Scan# 311
 Delta R.T. 0.006 min
 Lab File: VX048229.D
 Acq: 20 Oct 2025 10:59

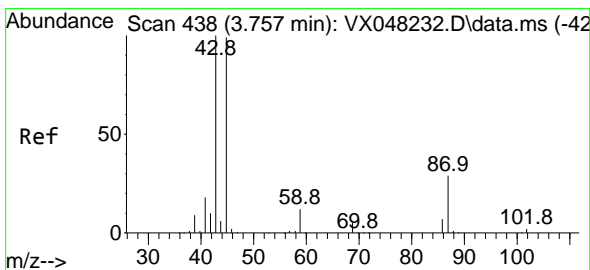
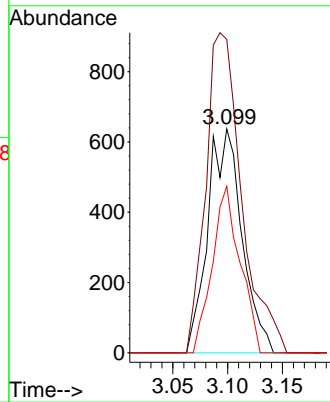
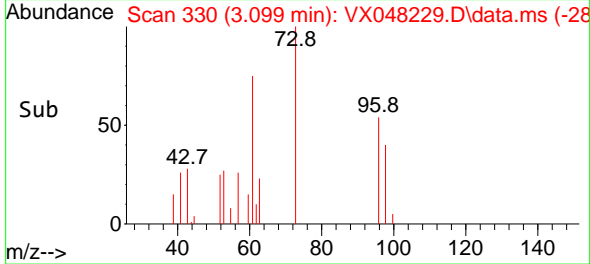
Instrument : MSVOA_X
 Client Sample Id : VSTDIC001



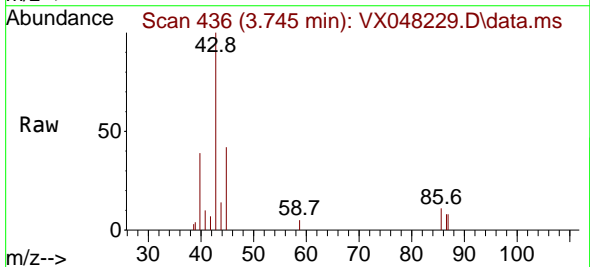
Tgt Ion: 96 Resp: 1370
 Ion Ratio Lower Upper
 96 100
 61 140.0 111.9 167.9
 98 74.4 51.2 76.8

Manual Integrations
APPROVED

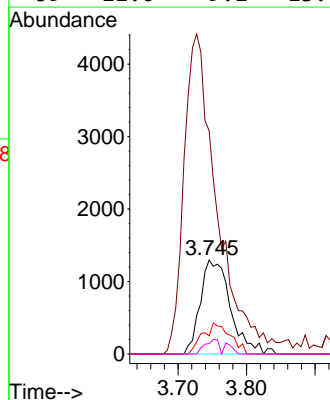
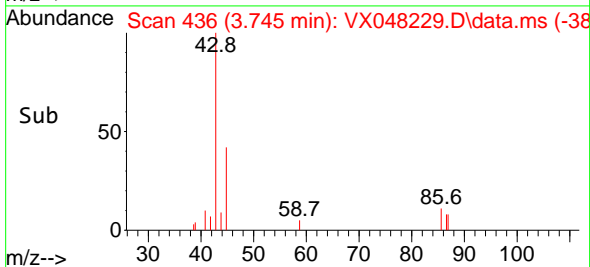
Reviewed By : John Carlone 10/21/2025
 Supervised By : Semsettin Yesilyurt 10/21/2025

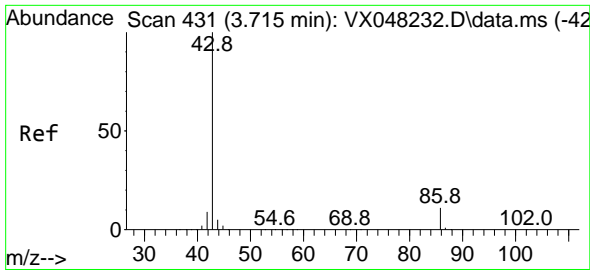


#22
 Diisopropyl ether
 Concen: 0.832 ug/l
 RT: 3.745 min Scan# 436
 Delta R.T. -0.006 min
 Lab File: VX048229.D
 Acq: 20 Oct 2025 10:59



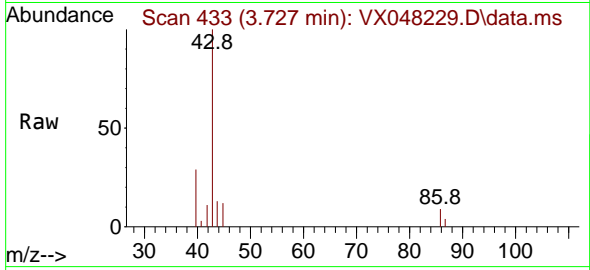
Tgt Ion: 45 Resp: 3977
 Ion Ratio Lower Upper
 45 100
 43 213.9 89.8 134.8#
 87 19.2 20.6 31.0#
 59 11.0 9.1 13.7





#23
 Vinyl Acetate
 Concen: 4.131 ug/l
 RT: 3.727 min Scan# 411
 Delta R.T. 0.012 min
 Lab File: VX048229.D
 Acq: 20 Oct 2025 10:59

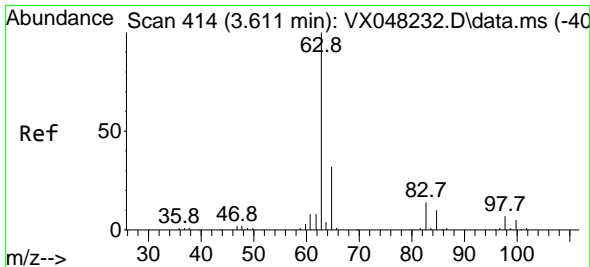
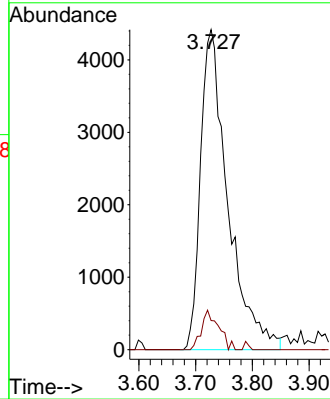
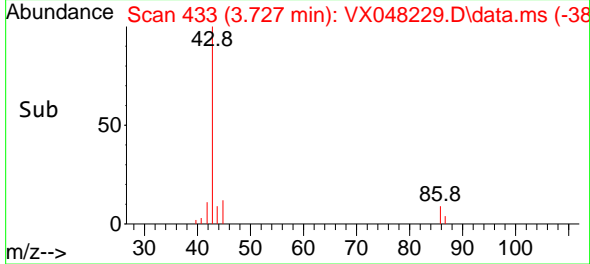
Instrument : MSVOA_X
 ClientSampleId : VSTDIC001



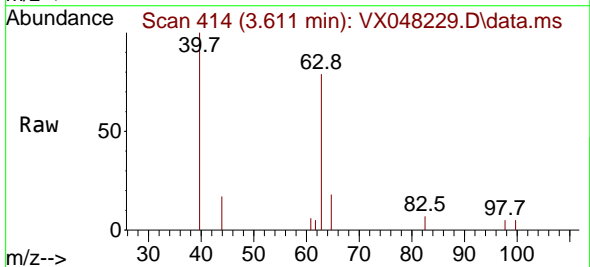
Tgt Ion: 43 Resp: 14769
 Ion Ratio Lower Upper
 43 100
 86 11.8 7.9 11.9

Manual Integrations
APPROVED

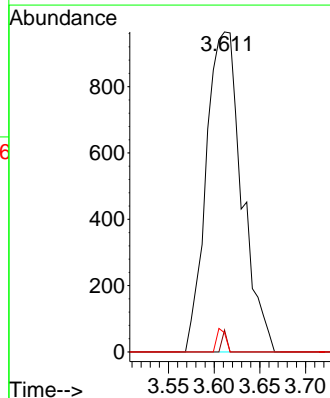
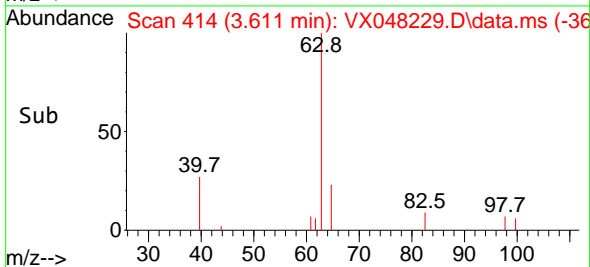
Reviewed By :John Carlone 10/21/2025
 Supervised By :Semsettin Yesilyurt 10/21/2025

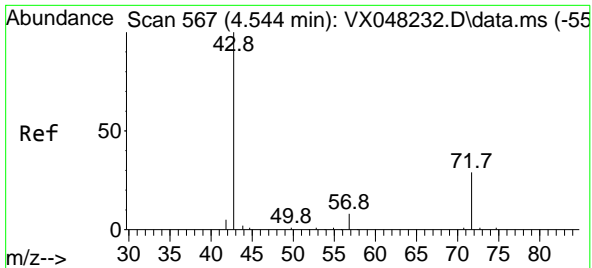


#24
 1,1-Dichloroethane
 Concen: 0.964 ug/l
 RT: 3.611 min Scan# 414
 Delta R.T. 0.006 min
 Lab File: VX048229.D
 Acq: 20 Oct 2025 10:59



Tgt Ion: 63 Resp: 2615
 Ion Ratio Lower Upper
 63 100
 98 6.8 3.5 10.6
 100 6.0 2.1 6.3





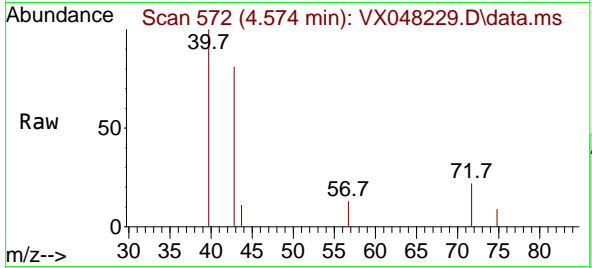
#25
 2-Butanone
 Concen: 5.043 ug/l
 RT: 4.574 min Scan# 51
 Delta R.T. 0.037 min
 Lab File: VX048229.D
 Acq: 20 Oct 2025 10:59

Instrument :

MSVOA_X

Client SampleId :

VSTDIC001



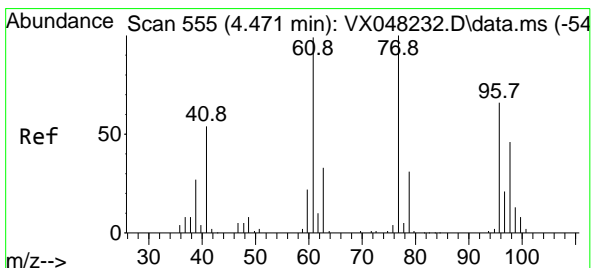
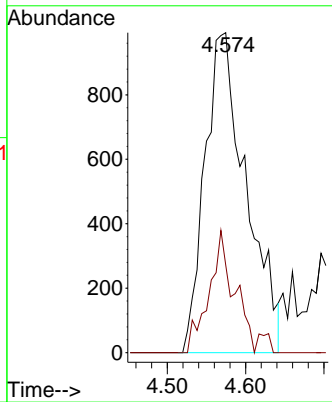
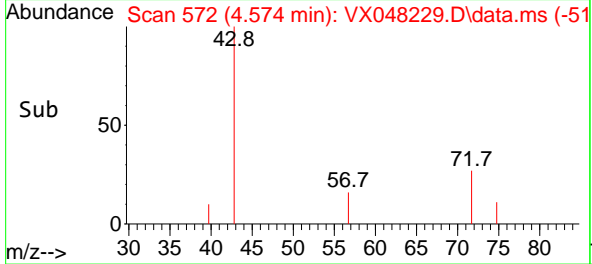
Tgt Ion: 43 Resp: 3638
 Ion Ratio Lower Upper
 43 100
 72 24.0 19.9 29.9

Manual Integrations

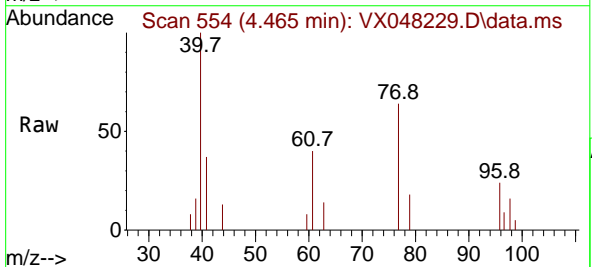
APPROVED

Reviewed By :John Carlone 10/21/2025

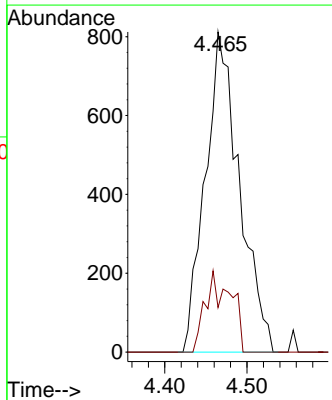
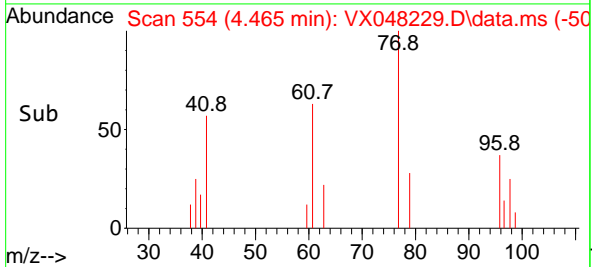
Supervised By :Semsettin Yesilyurt 10/21/2025

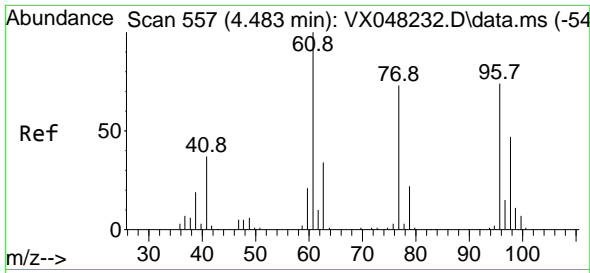


#26
 2,2-Dichloropropane
 Concen: 1.012 ug/l
 RT: 4.465 min Scan# 554
 Delta R.T. 0.000 min
 Lab File: VX048229.D
 Acq: 20 Oct 2025 10:59



Tgt Ion: 77 Resp: 2347
 Ion Ratio Lower Upper
 77 100
 97 14.3 11.1 33.3





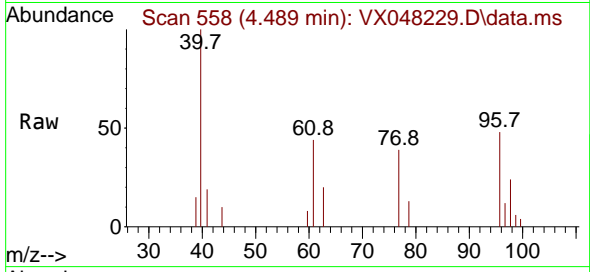
#27
 cis-1,2-Dichloroethene
 Concen: 0.959 ug/l
 RT: 4.489 min Scan# 557
 Delta R.T. 0.006 min
 Lab File: VX048229.D
 Acq: 20 Oct 2025 10:59

Instrument :

MSVOA_X

ClientSampleID :

VSTDICC001



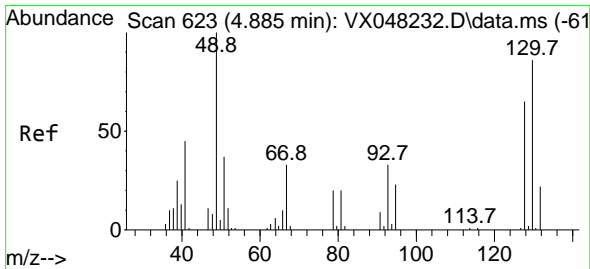
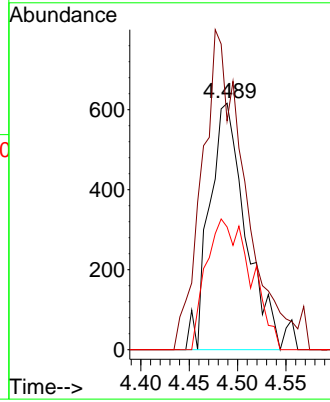
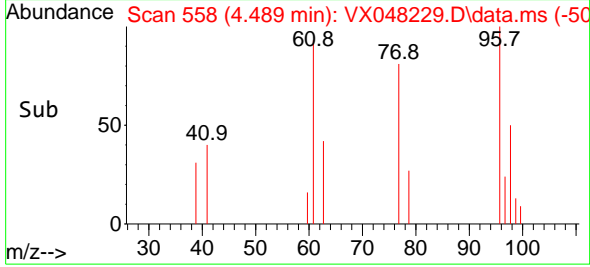
Tgt Ion: 96 Resp: 1598
 Ion Ratio Lower Upper
 96 100
 61 156.9 0.0 294.2
 98 65.8 0.0 128.4

Manual Integrations

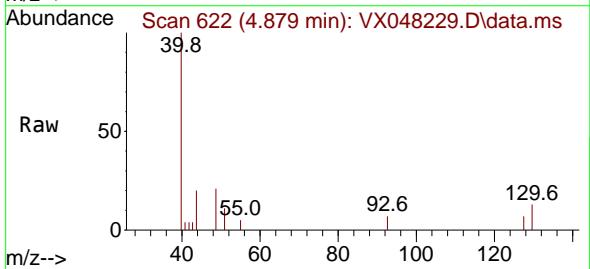
APPROVED

Reviewed By :John Carlone 10/21/2025

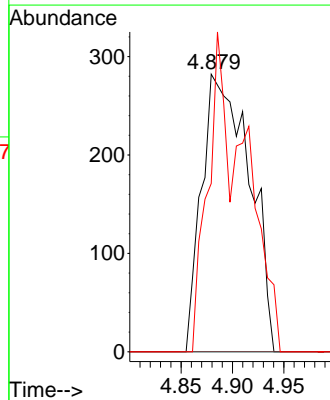
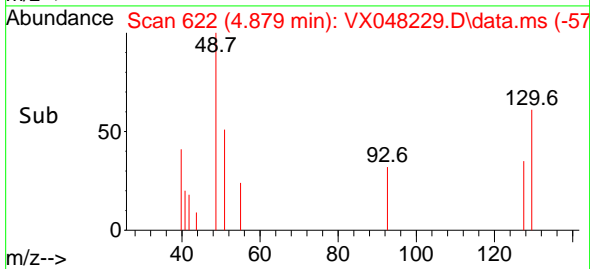
Supervised By :Semsettin Yesilyurt 10/21/2025

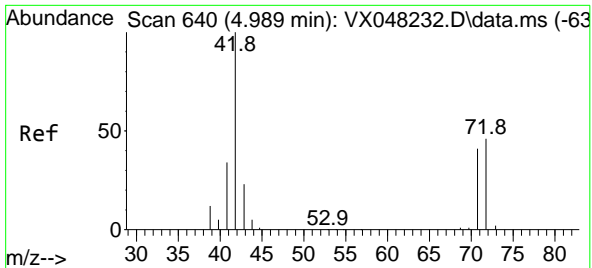


#28
 Bromochloromethane
 Concen: 0.726 ug/l
 RT: 4.879 min Scan# 622
 Delta R.T. -0.006 min
 Lab File: VX048229.D
 Acq: 20 Oct 2025 10:59



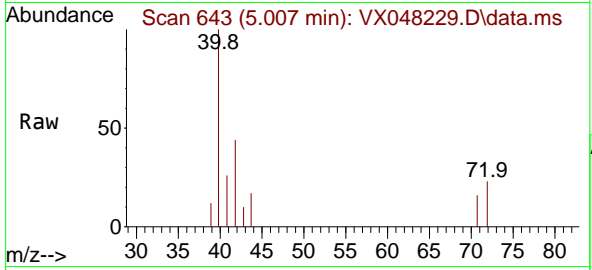
Tgt Ion: 49 Resp: 908
 Ion Ratio Lower Upper
 49 100
 129 0.0 0.0 4.4
 130 47.0 59.3 88.9#





#29
 Tetrahydrofuran
 Concen: 4.929 ug/l
 RT: 5.007 min Scan# 643
 Delta R.T. 0.018 min
 Lab File: VX048229.D
 Acq: 20 Oct 2025 10:59

Instrument : MSVOA_X
 ClientSampleId : VSTDIC001

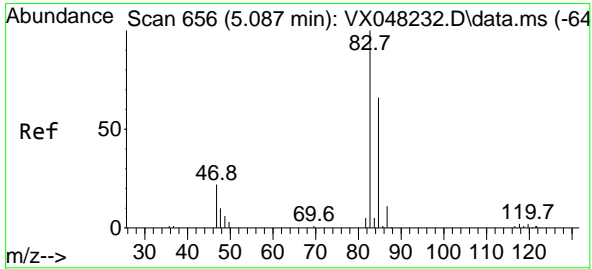
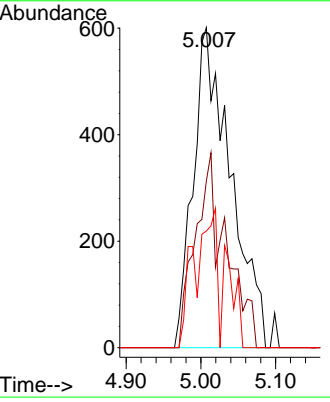
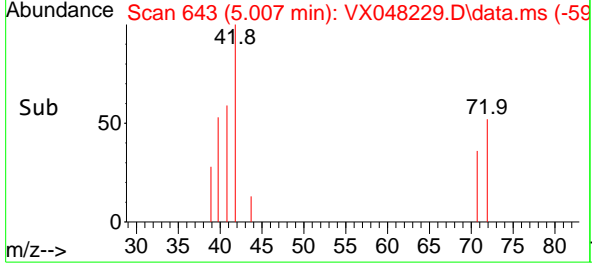


Tgt Ion: 42 Resp: 2088

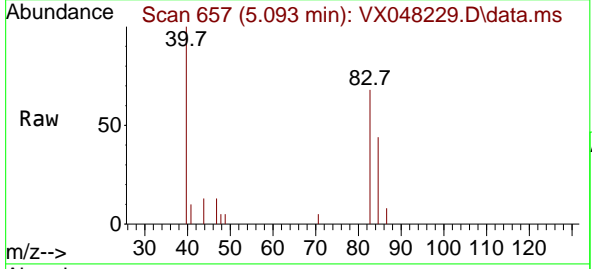
Ion	Ratio	Lower	Upper
42	100		
72	34.1	35.3	52.9
71	16.2	32.2	48.4

Manual Integrations
APPROVED

Reviewed By : John Carlone 10/21/2025
 Supervised By : Semsettin Yesilyurt 10/21/2025

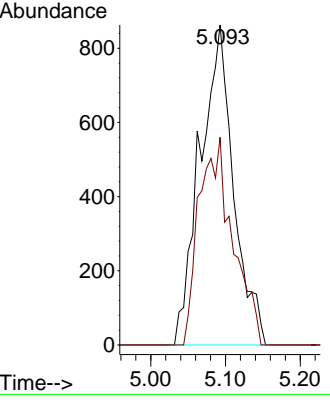
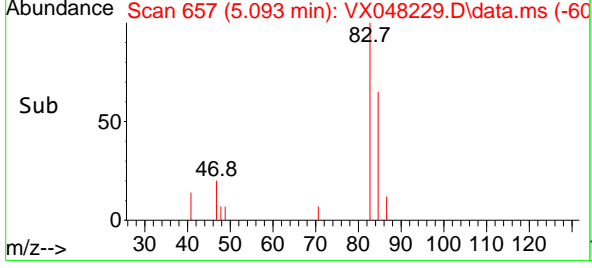


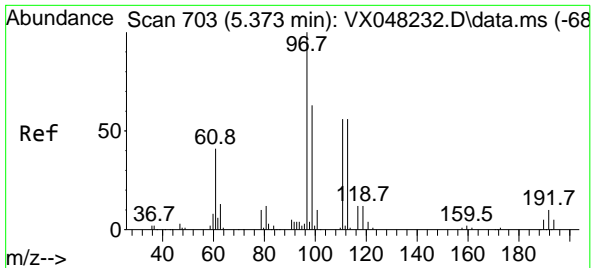
#30
 Chloroform
 Concen: 0.941 ug/l
 RT: 5.093 min Scan# 657
 Delta R.T. 0.012 min
 Lab File: VX048229.D
 Acq: 20 Oct 2025 10:59



Tgt Ion: 83 Resp: 2688

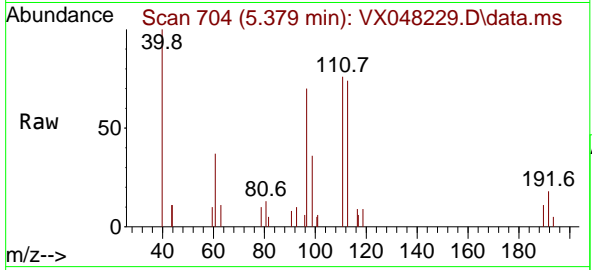
Ion	Ratio	Lower	Upper
83	100		
85	64.9	50.1	75.1





#32
 1,1,1-Trichloroethane
 Concen: 1.048 ug/l
 RT: 5.379 min Scan# 703
 Delta R.T. 0.006 min
 Lab File: VX048229.D
 Acq: 20 Oct 2025 10:59

Instrument : MSVOA_X
 Client Sample ID : VSTDIC001

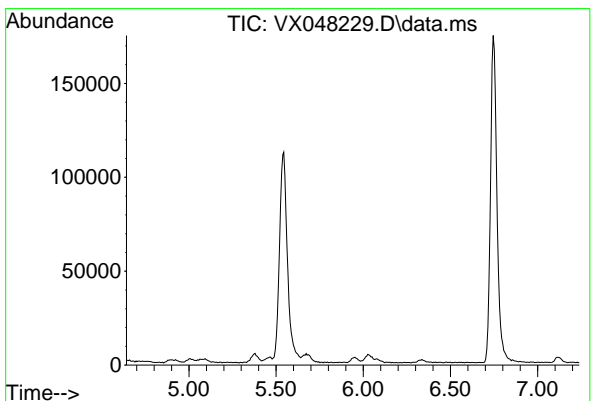
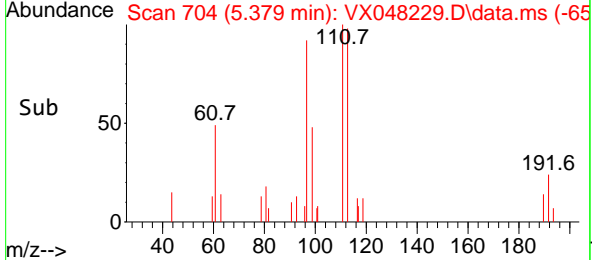
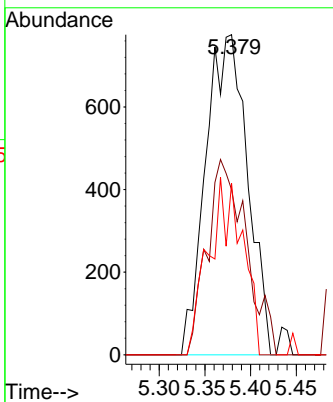


Tgt Ion: 97 Resp: 245

Ion	Ratio	Lower	Upper
97	100		
99	0.0	51.7	77.5
61	44.9	34.8	52.2

Manual Integrations
APPROVED

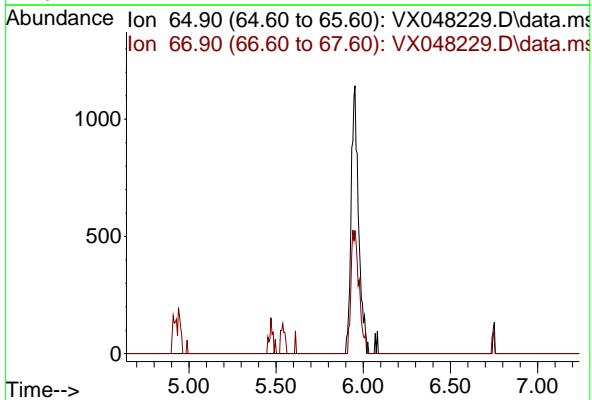
Reviewed By : John Carlone 10/21/2025
 Supervised By : Semsettin Yesilyurt 10/21/2025

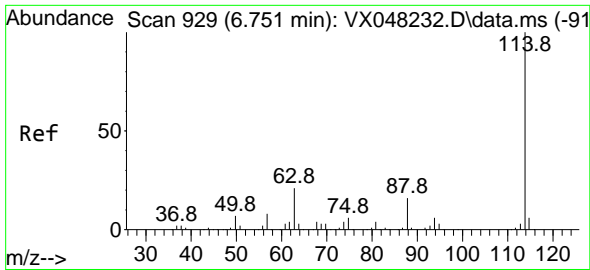


#33
 1,2-Dichloroethane-d4
 Concen: 0.000 ug/l
 Expected RT: 5.94 min
 Lab File: VX048229.D
 Acq: 20 Oct 2025 10:59

Tgt Ion: 65

Sig	Exp Ratio
65	100
67	52.5





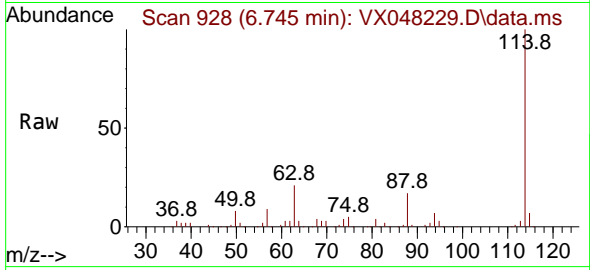
#34
 1,4-Difluorobenzene
 Concen: 50.000 ug/l
 RT: 6.745 min Scan# 91
 Delta R.T. 0.000 min
 Lab File: VX048229.D
 Acq: 20 Oct 2025 10:59

Instrument :

MSVOA_X

ClientSampleId :

VSTDIC001



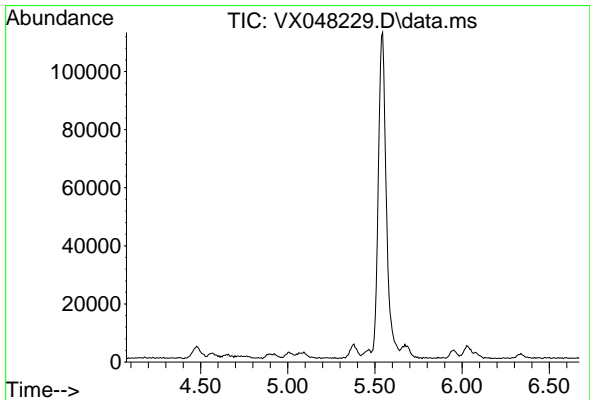
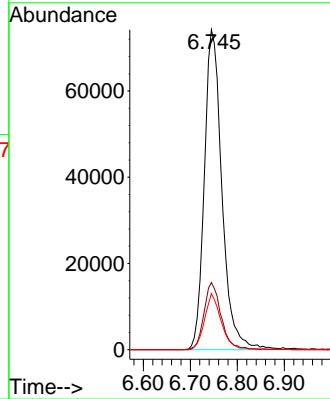
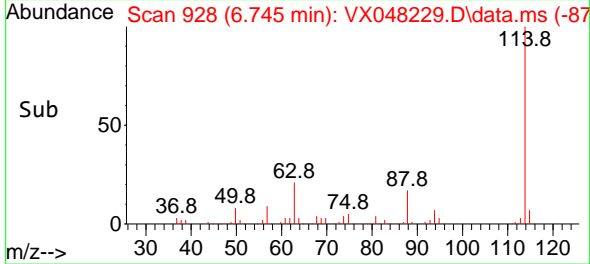
Tgt Ion:114 Resp: 193180
 Ion Ratio Lower Upper
 114 100
 63 21.0 0.0 43.2
 88 17.5 0.0 33.6

Manual Integrations

APPROVED

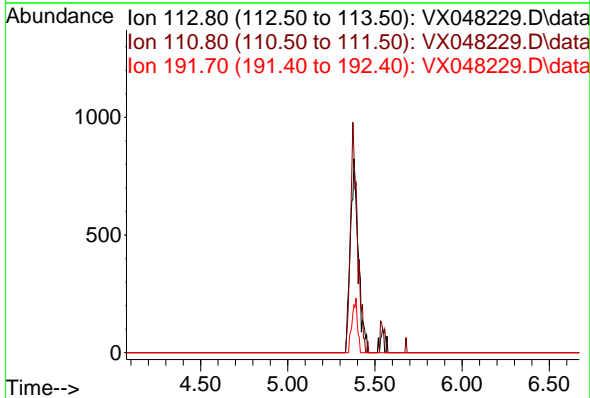
Reviewed By :John Carlone 10/21/2025

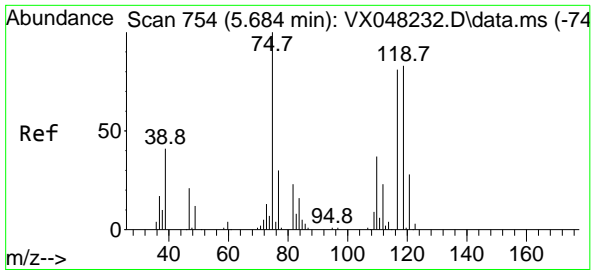
Supervised By :Semsettin Yesilyurt 10/21/2025



#35
 Dibromofluoromethane
 Concen: 0.000 ug/l
 Expected RT: 5.37 min
 Lab File: VX048229.D
 Acq: 20 Oct 2025 10:59

Tgt Ion: 113
 Sig Exp Ratio
 113 100
 111 102.8
 192 18.9





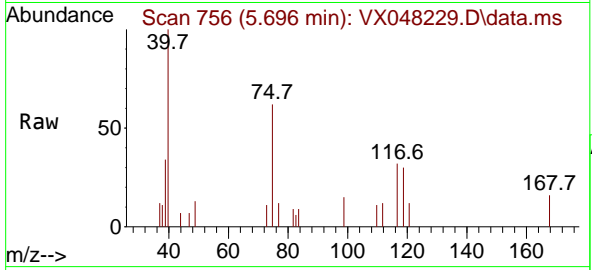
#36
 1,1-Dichloropropene
 Concen: 1.151 ug/l
 RT: 5.696 min Scan# 754
 Delta R.T. 0.012 min
 Lab File: VX048229.D
 Acq: 20 Oct 2025 10:59

Instrument :

MSVOA_X

ClientSampleID :

VSTDICC001



Tgt Ion: 75 Resp: 217

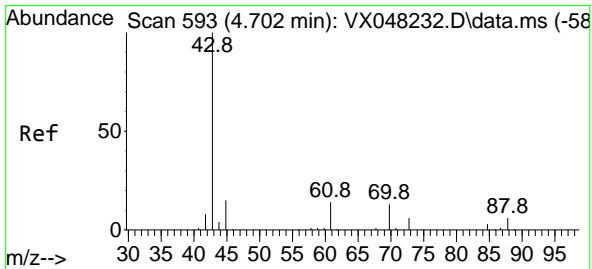
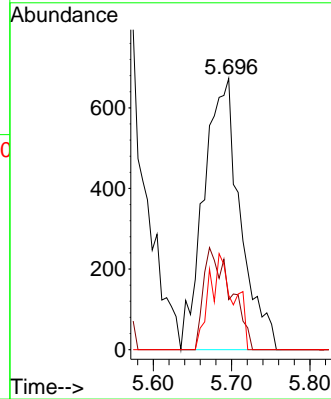
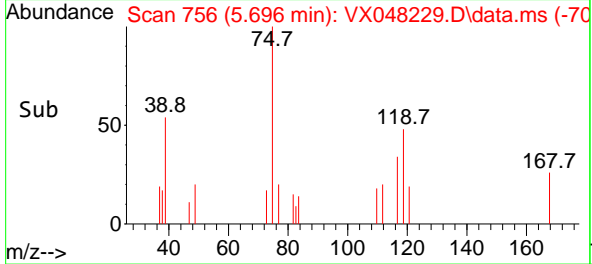
Ion	Ratio	Lower	Upper
75	100		
110	0.0	17.7	53.1
77	23.9	24.3	36.5

Manual Integrations

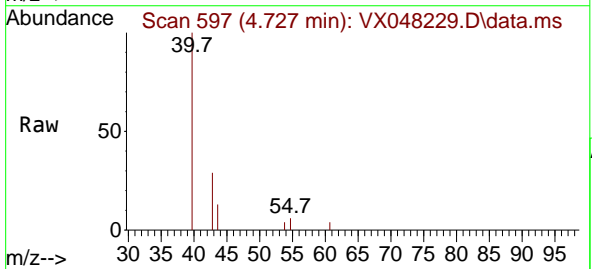
APPROVED

Reviewed By :John Carlone 10/21/2025

Supervised By :Semsettin Yesilyurt 10/21/2025

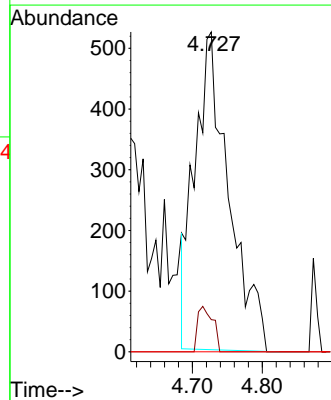
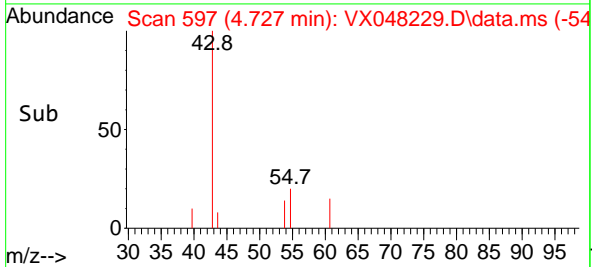


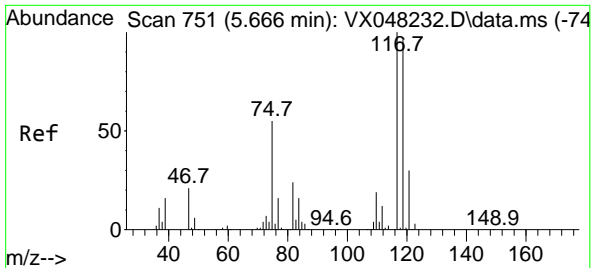
#37
 Ethyl Acetate
 Concen: 1.174 ug/l m
 RT: 4.727 min Scan# 597
 Delta R.T. 0.031 min
 Lab File: VX048229.D
 Acq: 20 Oct 2025 10:59



Tgt Ion: 43 Resp: 1772

Ion	Ratio	Lower	Upper
43	100		
61	6.4	10.6	15.8#
70	0.0	7.8	11.6#





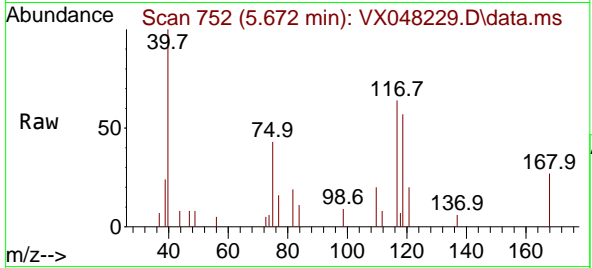
#38
 Carbon Tetrachloride
 Concen: 1.159 ug/l m
 RT: 5.672 min Scan# 751
 Delta R.T. 0.006 min
 Lab File: VX048229.D
 Acq: 20 Oct 2025 10:59

Instrument :

MSVOA_X

ClientSampleId :

VSTDICC001

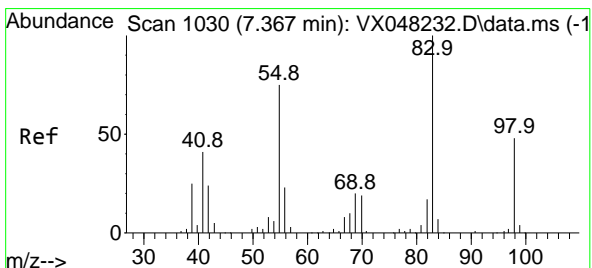
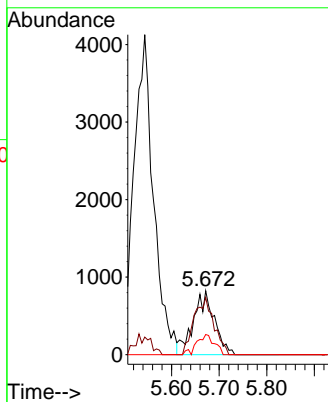
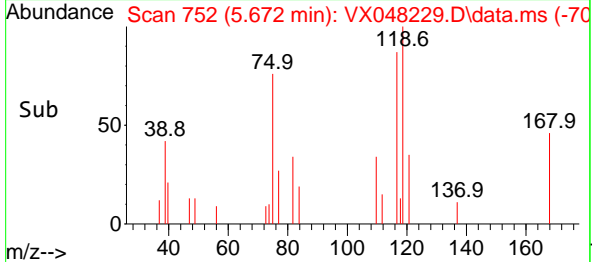


Tgt Ion:117 Resp: 251
 Ion Ratio Lower Upper
 117 100
 119 89.4 77.2 115.8
 121 31.5 24.8 37.2

Manual Integrations

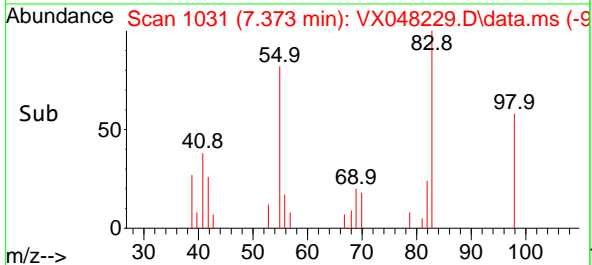
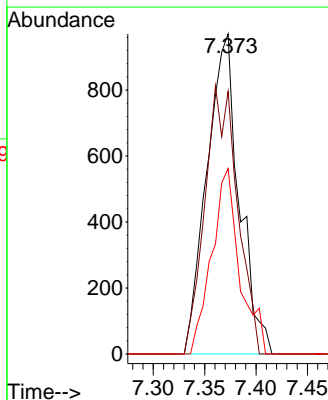
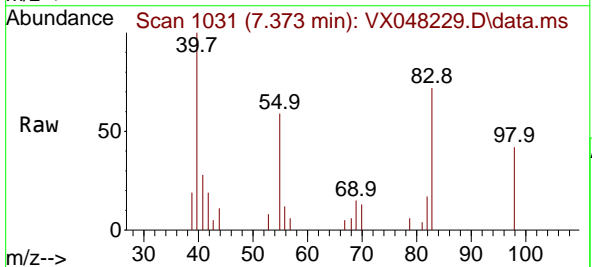
APPROVED

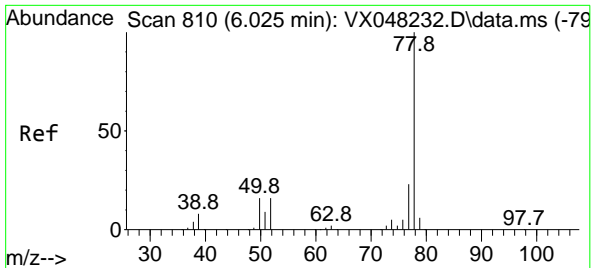
Reviewed By :John Carlone 10/21/2025
 Supervised By :Semsettin Yesilyurt 10/21/2025



#39
 Methylcyclohexane
 Concen: 0.999 ug/l
 RT: 7.373 min Scan# 1031
 Delta R.T. 0.006 min
 Lab File: VX048229.D
 Acq: 20 Oct 2025 10:59

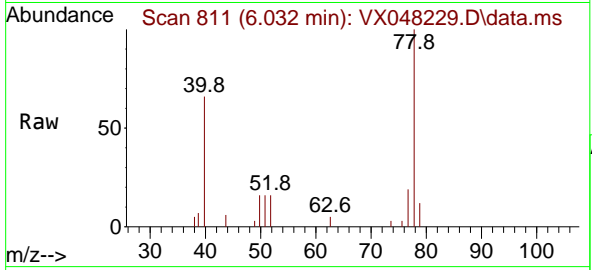
Tgt Ion: 83 Resp: 2128
 Ion Ratio Lower Upper
 83 100
 55 82.1 66.2 99.2
 98 57.9 38.9 58.3





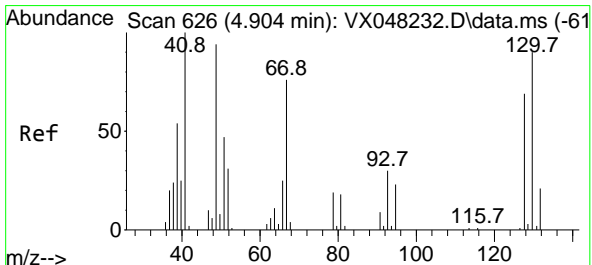
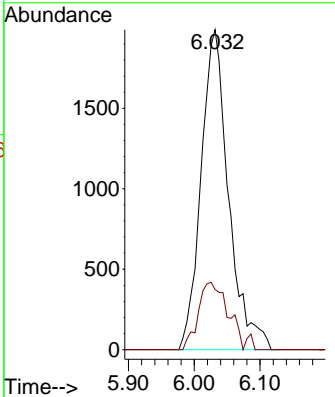
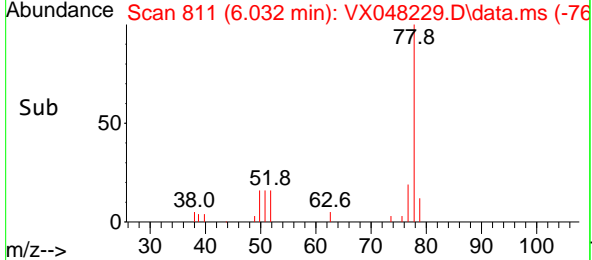
#40
Benzene
Concen: 1.028 ug/l
RT: 6.032 min Scan# 811
Delta R.T. 0.006 min
Lab File: VX048229.D
Acq: 20 Oct 2025 10:59

Instrument : MSVOA_X
Client Sample Id : VSTDIC001

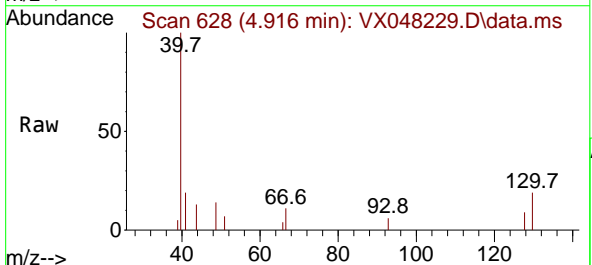


Tgt Ion: 78 Resp: 576
Ion Ratio Lower Upper
78 100
77 18.9 19.3 28.9

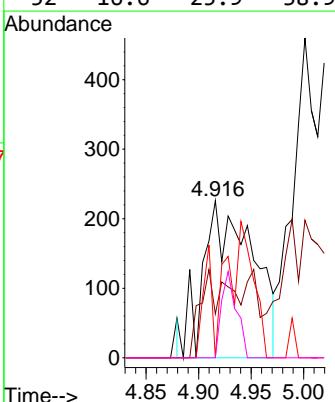
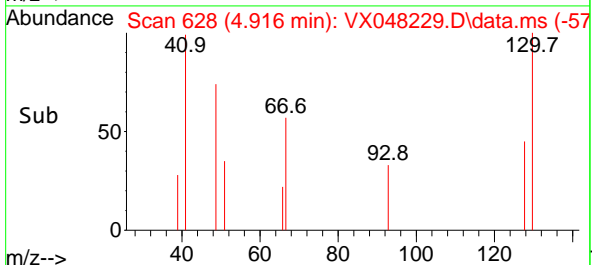
Manual Integrations
APPROVED
Reviewed By :John Carlone 10/21/2025
Supervised By :Semsettin Yesilyurt 10/21/2025

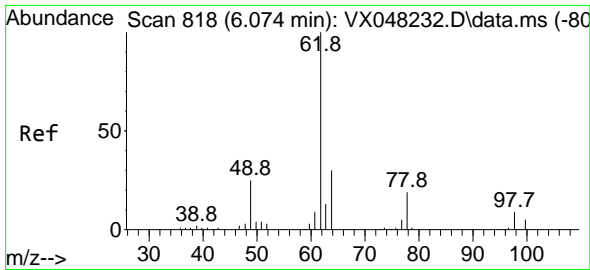


#41
Methacrylonitrile
Concen: 0.917 ug/l m
RT: 4.916 min Scan# 628
Delta R.T. 0.012 min
Lab File: VX048229.D
Acq: 20 Oct 2025 10:59



Tgt Ion: 41 Resp: 741
Ion Ratio Lower Upper
41 100
39 17.0 44.0 66.0#
67 12.3 58.7 88.1#
52 16.6 25.9 38.9#





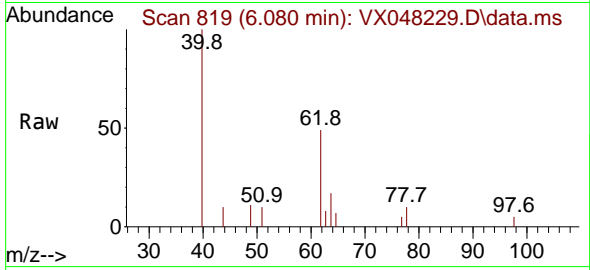
#42
 1,2-Dichloroethane
 Concen: 1.017 ug/l
 RT: 6.080 min Scan# 818
 Delta R.T. 0.012 min
 Lab File: VX048229.D
 Acq: 20 Oct 2025 10:59

Instrument :

MSVOA_X

ClientSampleId :

VSTDICC001



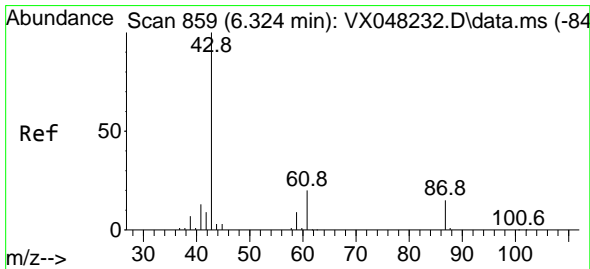
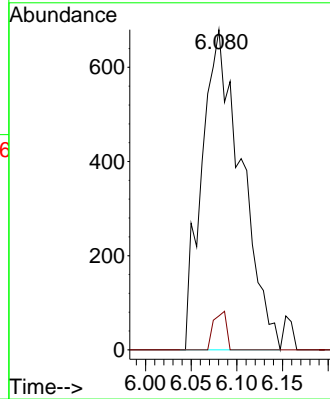
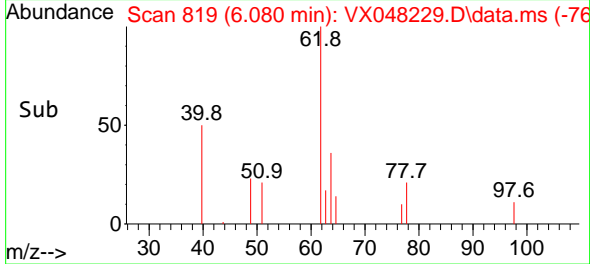
Tgt Ion: 62 Resp: 2044
 Ion Ratio Lower Upper
 62 100
 98 3.9 0.0 17.2

Manual Integrations

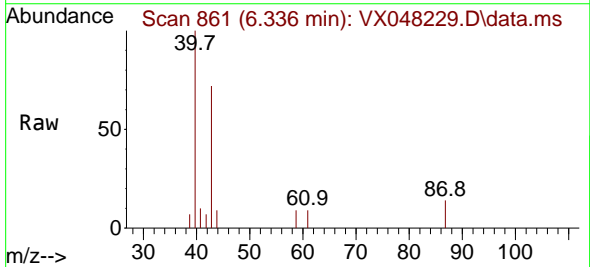
APPROVED

Reviewed By :John Carlone 10/21/2025

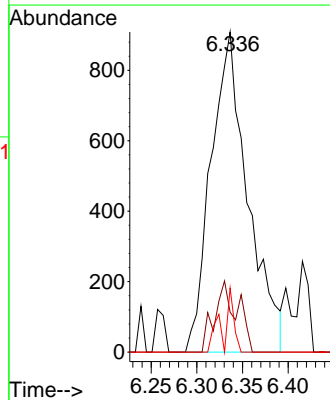
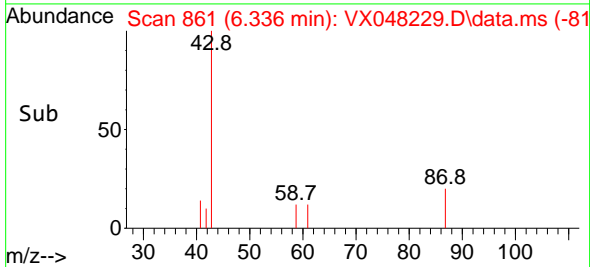
Supervised By :Semsettin Yesilyurt 10/21/2025

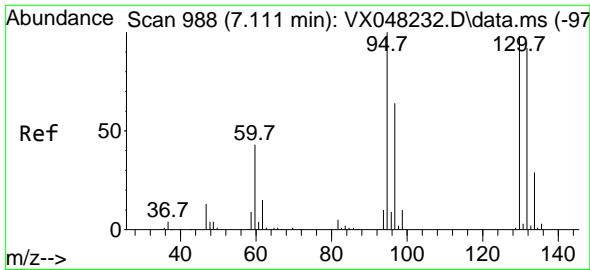


#43
 Isopropyl Acetate
 Concen: 1.006 ug/l
 RT: 6.336 min Scan# 861
 Delta R.T. 0.012 min
 Lab File: VX048229.D
 Acq: 20 Oct 2025 10:59



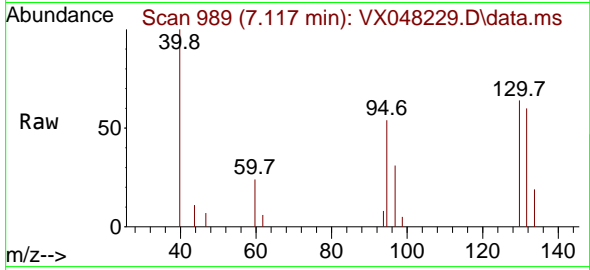
Tgt Ion: 43 Resp: 2548
 Ion Ratio Lower Upper
 43 100
 61 13.8 14.9 22.3#
 87 3.4 9.4 14.2#





#44
 Trichloroethene
 Concen: 1.094 ug/l
 RT: 7.117 min Scan# 989
 Delta R.T. 0.006 min
 Lab File: VX048229.D
 Acq: 20 Oct 2025 10:59

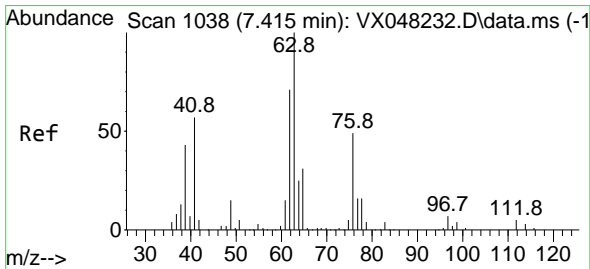
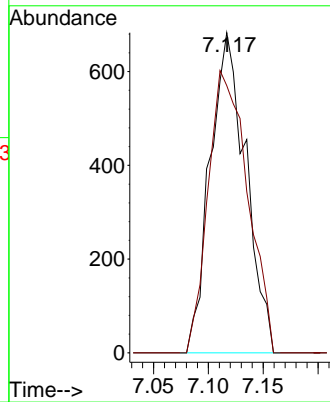
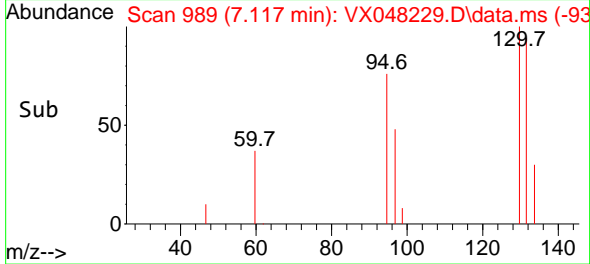
Instrument :
 MSVOA_X
 ClientSampleId :
 VSTDIC001



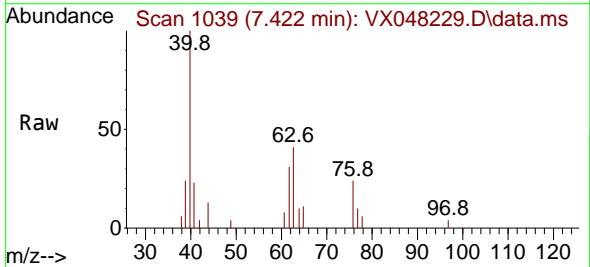
Tgt Ion:130 Resp: 154
 Ion Ratio Lower Upper
 130 100
 95 83.5 0.0 200.6

Manual Integrations
APPROVED

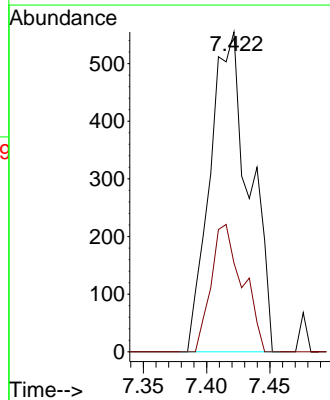
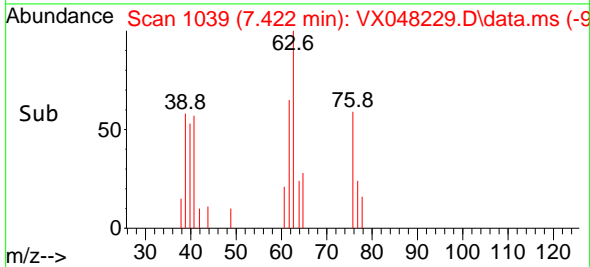
Reviewed By :John Carlone 10/21/2025
 Supervised By :Semsettin Yesilyurt 10/21/2025

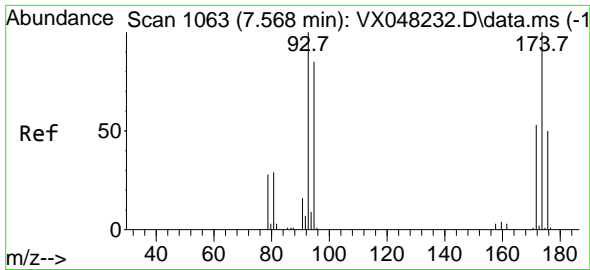


#45
 1,2-Dichloropropane
 Concen: 0.842 ug/l
 RT: 7.422 min Scan# 1039
 Delta R.T. 0.006 min
 Lab File: VX048229.D
 Acq: 20 Oct 2025 10:59



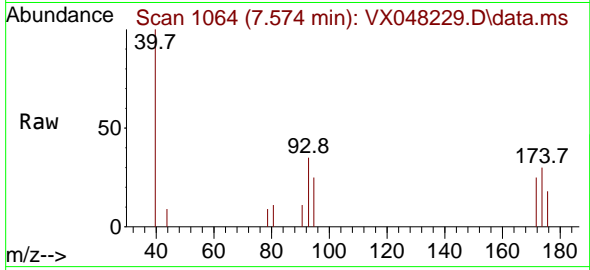
Tgt Ion: 63 Resp: 1195
 Ion Ratio Lower Upper
 63 100
 65 27.7 24.1 36.1





#46
 Dibromomethane
 Concen: 1.011 ug/l
 RT: 7.574 min Scan# 1063
 Delta R.T. 0.006 min
 Lab File: VX048229.D
 Acq: 20 Oct 2025 10:59

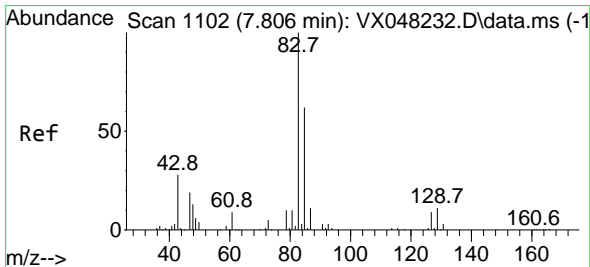
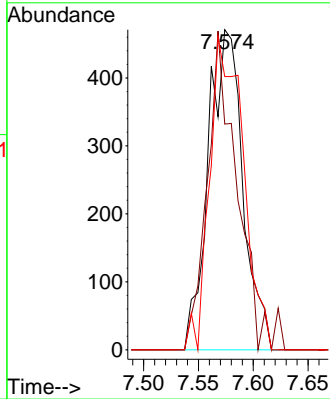
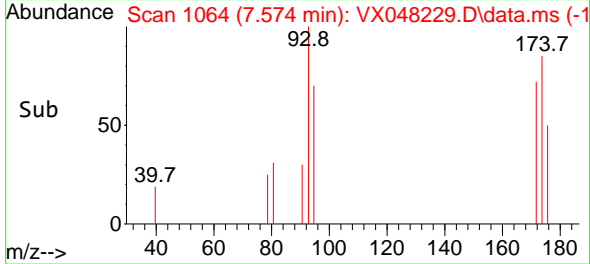
Instrument : MSVOA_X
 Client Sample Id : VSTDIC001



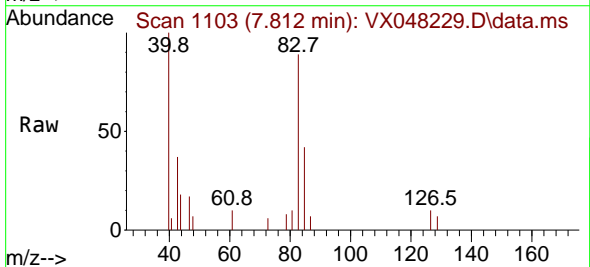
Tgt Ion: 93 Resp: 103
 Ion Ratio Lower Upper
 93 100
 95 86.4 65.9 98.9
 174 95.3 71.7 107.5

Manual Integrations
APPROVED

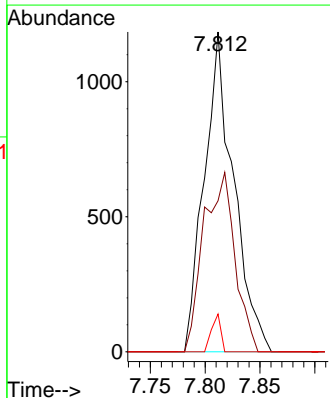
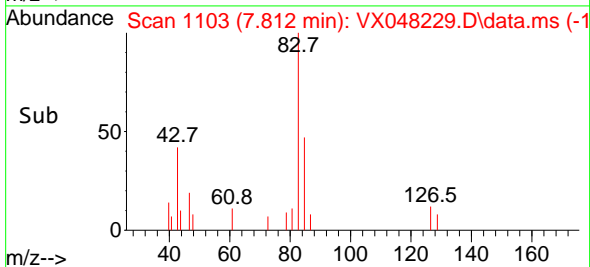
Reviewed By : John Carlone 10/21/2025
 Supervised By : Semsettin Yesilyurt 10/21/2025

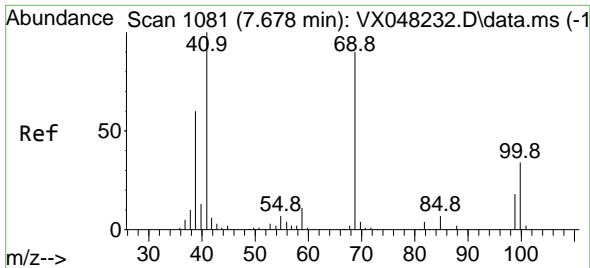


#47
 Bromodichloromethane
 Concen: 0.999 ug/l
 RT: 7.812 min Scan# 1103
 Delta R.T. 0.006 min
 Lab File: VX048229.D
 Acq: 20 Oct 2025 10:59



Tgt Ion: 83 Resp: 2204
 Ion Ratio Lower Upper
 83 100
 85 47.2 52.2 78.4#
 127 11.8 7.3 10.9#





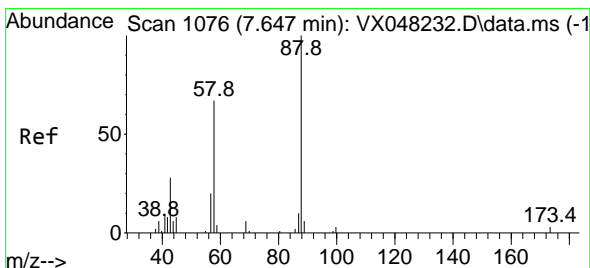
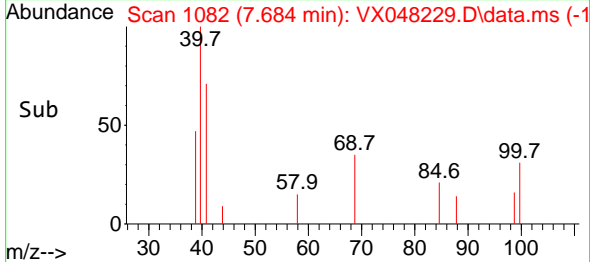
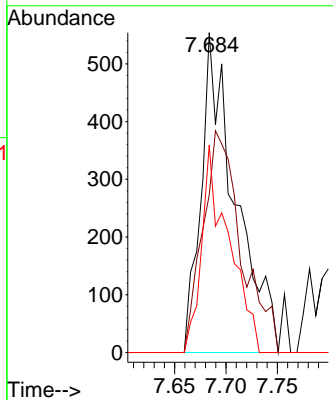
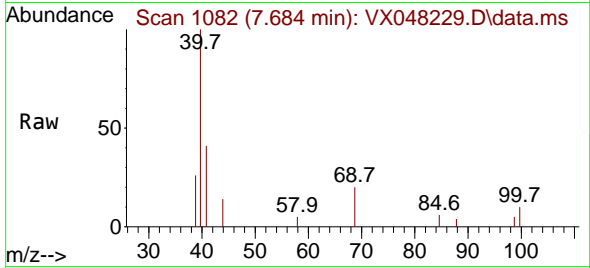
#48
 Methyl methacrylate
 Concen: 0.989 ug/l
 RT: 7.684 min Scan# 1081
 Delta R.T. 0.006 min
 Lab File: VX048229.D
 Acq: 20 Oct 2025 10:59

Instrument : MSVOA_X
 Client Sample Id : VSTDIC001

Tgt Ion	Ratio	Lower	Upper
41	100		
69	77.6	63.4	95.0
39	51.7	47.1	70.7

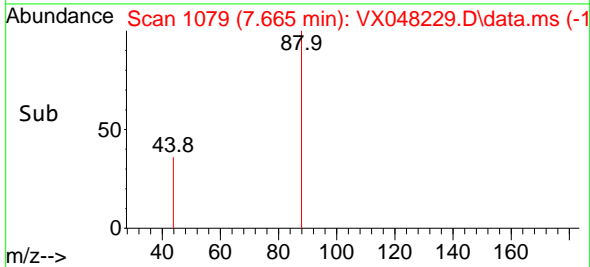
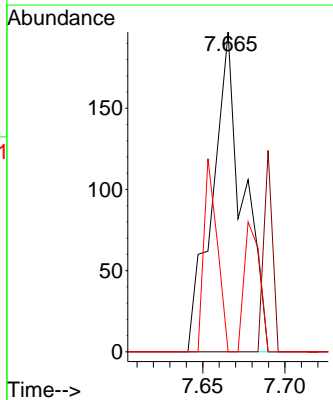
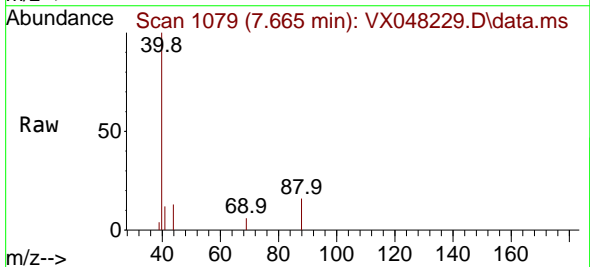
Manual Integrations
APPROVED

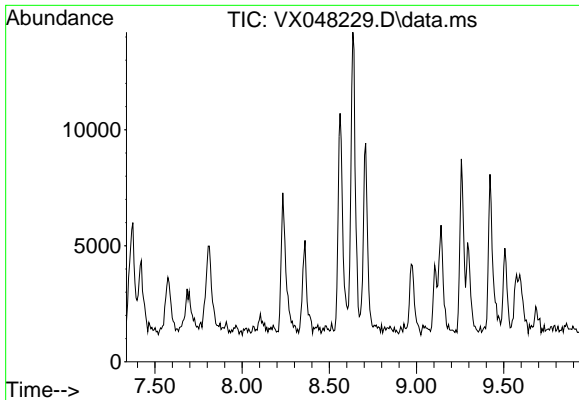
Reviewed By : John Carlone 10/21/2025
 Supervised By : Semsettin Yesilyurt 10/21/2025



#49
 1,4-Dioxane
 Concen: 21.840 ug/l
 RT: 7.665 min Scan# 1079
 Delta R.T. 0.024 min
 Lab File: VX048229.D
 Acq: 20 Oct 2025 10:59

Tgt Ion	Ratio	Lower	Upper
88	100		
43	0.0	35.0	52.4#
58	20.8	61.9	92.9#



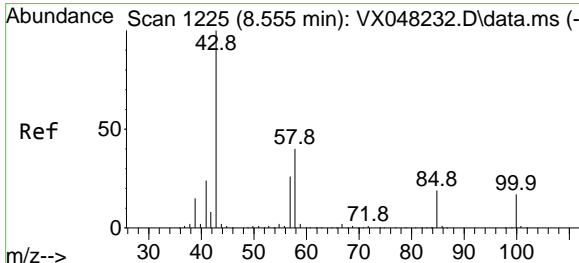
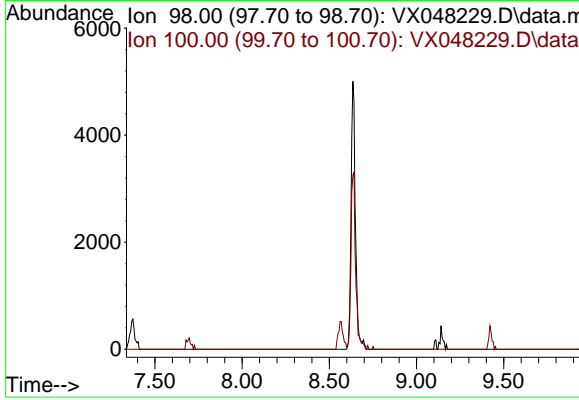


#50
 Toluene-d8
 Concen: 0.000 ug/l
 Expected RT: 8.63 min
 Lab File: VX048229.D
 Acq: 20 Oct 2025 10:59

Instrument :
 MSVOA_X
ClientSampleId :
 VSTDIC001

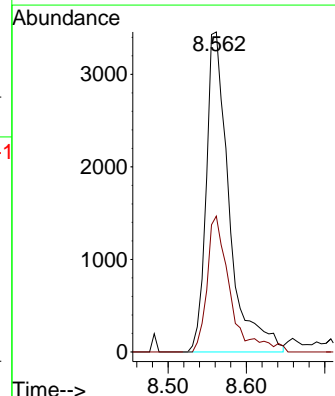
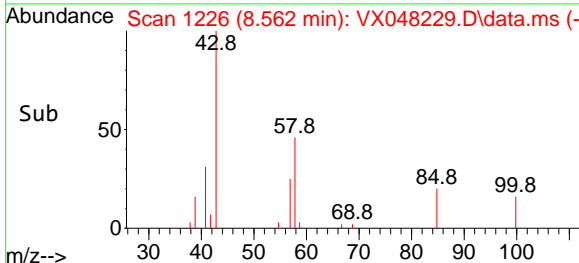
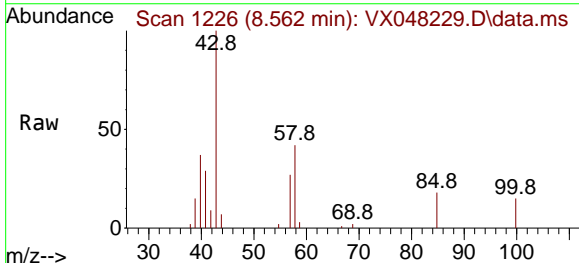
Tgt Ion: 98
 Sig Exp Ratio
 98 100
 100 66.2

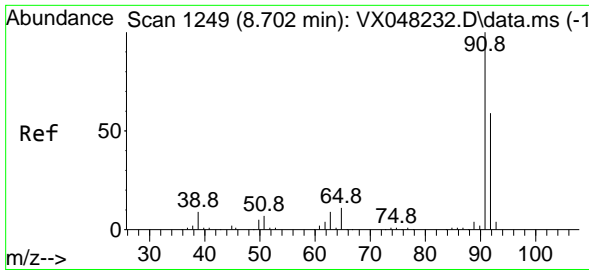
Manual Integrations
APPROVED
 Reviewed By :John Carlone 10/21/2025
 Supervised By :Semsettin Yesilyurt 10/21/2025



#51
 4-Methyl-2-Pentanone
 Concen: 5.011 ug/l
 RT: 8.562 min Scan# 1226
 Delta R.T. 0.006 min
 Lab File: VX048229.D
 Acq: 20 Oct 2025 10:59

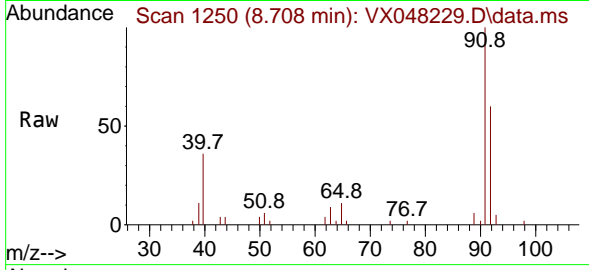
Tgt Ion: 43 Resp: 7066
 Ion Ratio Lower Upper
 43 100
 58 42.1 29.5 44.3





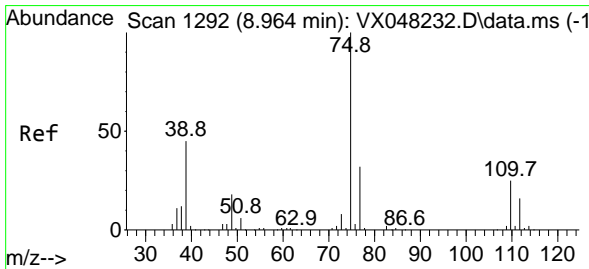
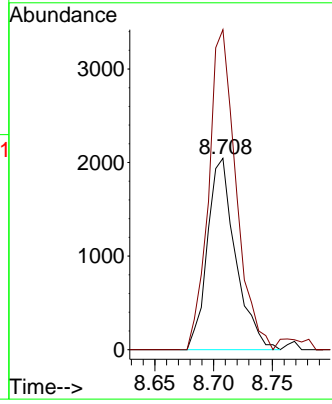
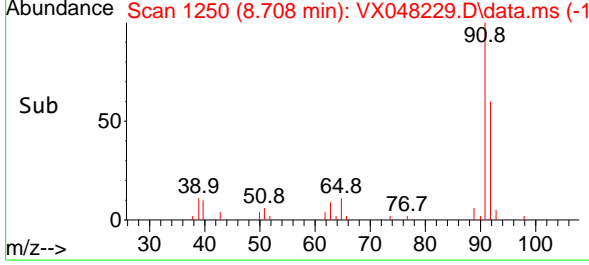
#52
 Toluene
 Concen: 1.010 ug/l
 RT: 8.708 min Scan# 1250
 Delta R.T. 0.006 min
 Lab File: VX048229.D
 Acq: 20 Oct 2025 10:59

Instrument : MSVOA_X
 ClientSampleId : VSTDIC001

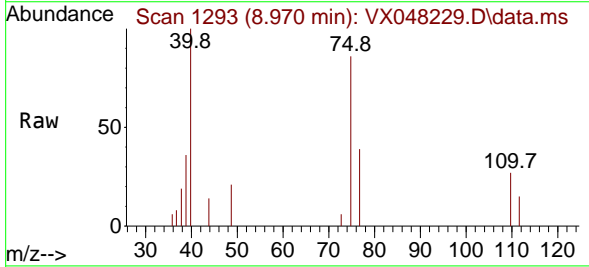


Tgt Ion: 92 Resp: 340
 Ion Ratio Lower Upper
 92 100
 91 162.8 136.1 204.1

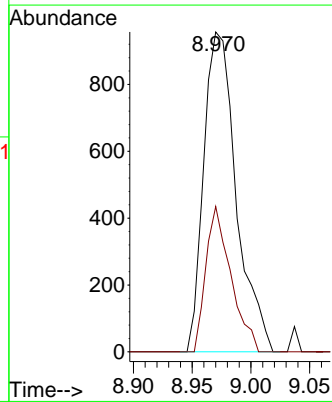
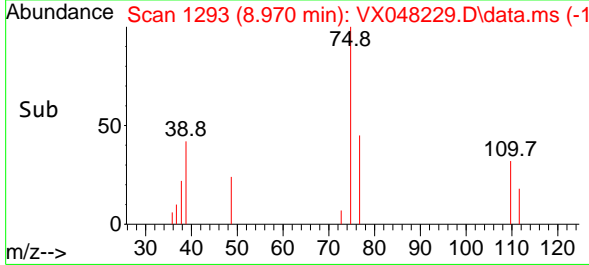
Manual Integrations
APPROVED
 Reviewed By :John Carlone 10/21/2025
 Supervised By :Semsettin Yesilyurt 10/21/2025

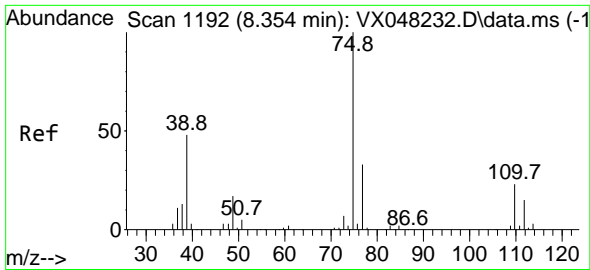


#53
 t-1,3-Dichloropropene
 Concen: 0.892 ug/l
 RT: 8.970 min Scan# 1293
 Delta R.T. 0.006 min
 Lab File: VX048229.D
 Acq: 20 Oct 2025 10:59



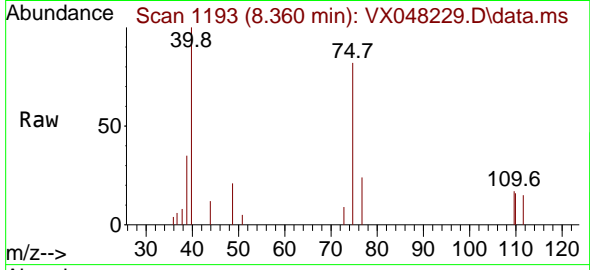
Tgt Ion: 75 Resp: 1844
 Ion Ratio Lower Upper
 75 100
 77 45.5 25.0 37.6#





#54
 cis-1,3-Dichloropropene
 Concen: 0.998 ug/l
 RT: 8.360 min Scan# 1193
 Delta R.T. 0.012 min
 Lab File: VX048229.D
 Acq: 20 Oct 2025 10:59

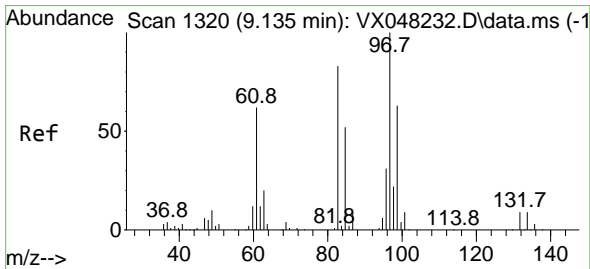
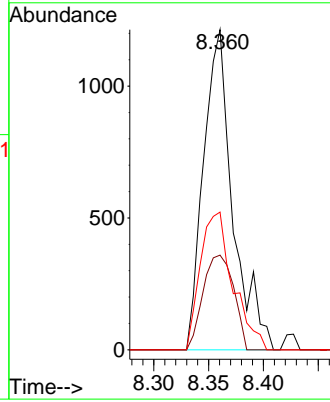
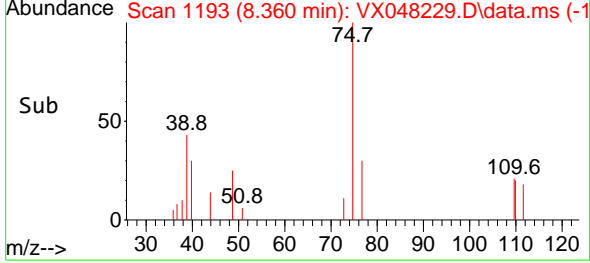
Instrument : MSVOA_X
 ClientSampleId : VSTDIC001



Tgt Ion: 75 Resp: 2250
 Ion Ratio Lower Upper
 75 100
 77 29.6 24.9 37.3
 39 43.0 42.6 64.0

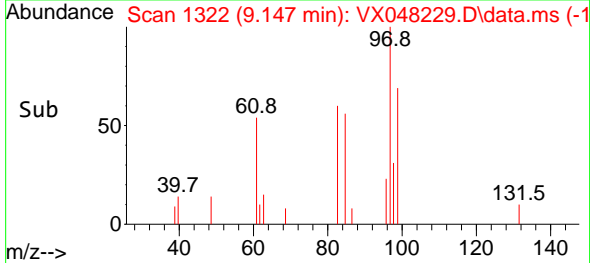
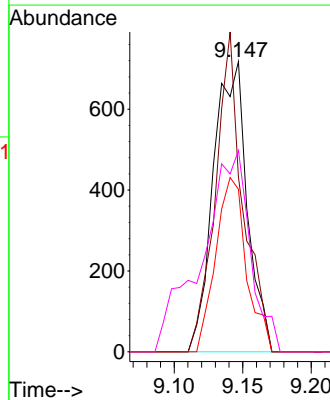
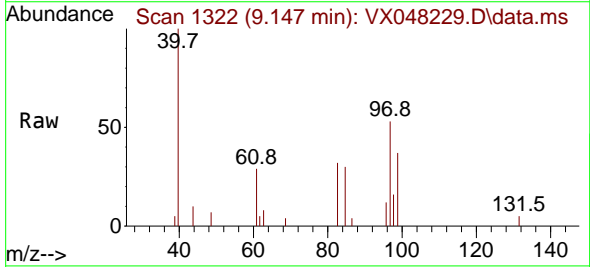
Manual Integrations
APPROVED

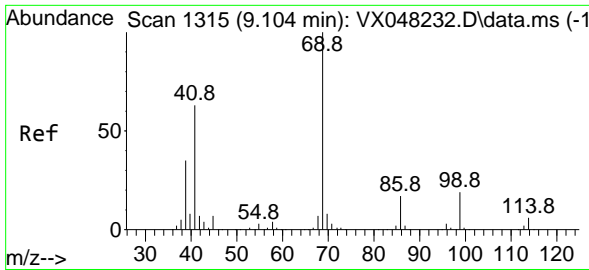
Reviewed By :John Carlone 10/21/2025
 Supervised By :Semsettin Yesilyurt 10/21/2025



#55
 1,1,2-Trichloroethane
 Concen: 0.977 ug/l
 RT: 9.147 min Scan# 1322
 Delta R.T. 0.012 min
 Lab File: VX048229.D
 Acq: 20 Oct 2025 10:59

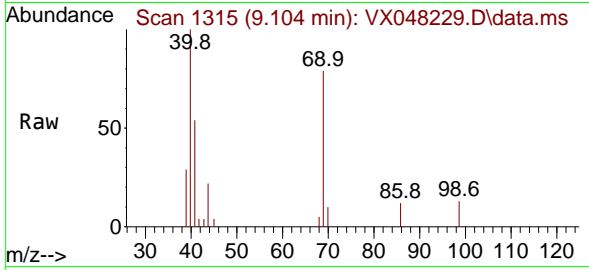
Tgt Ion: 97 Resp: 1229
 Ion Ratio Lower Upper
 97 100
 83 60.2 70.6 105.8#
 85 56.0 45.0 67.6
 99 69.4 50.9 76.3





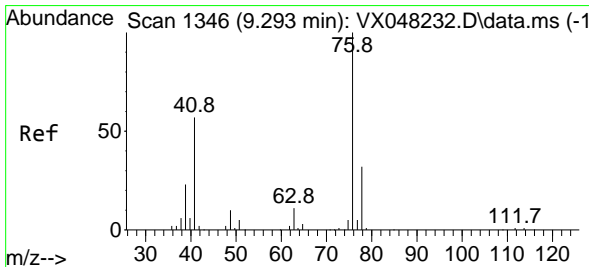
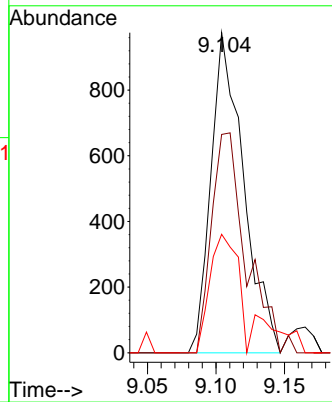
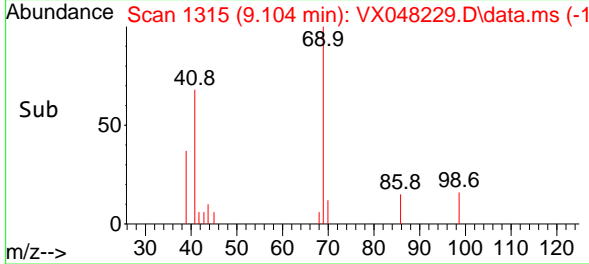
#56
 Ethyl methacrylate
 Concen: 0.945 ug/l
 RT: 9.104 min Scan# 1315
 Delta R.T. 0.006 min
 Lab File: VX048229.D
 Acq: 20 Oct 2025 10:59

Instrument : MSVOA_X
 ClientSampleId : VSTDIC001

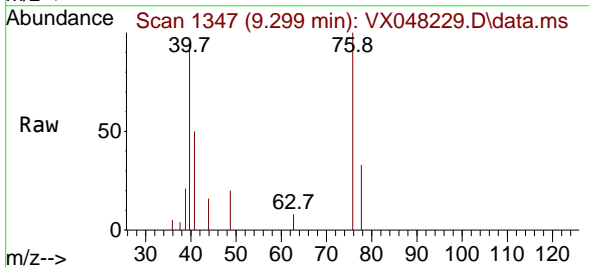


Tgt Ion: 69 Resp: 1610
 Ion Ratio Lower Upper
 69 100
 41 73.0 56.0 84.0
 39 36.5 31.6 47.4

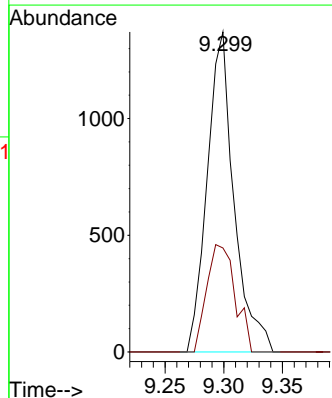
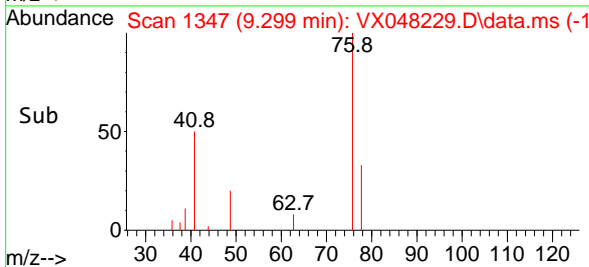
Manual Integrations
APPROVED
 Reviewed By :John Carlone 10/21/2025
 Supervised By :Semsettin Yesilyurt 10/21/2025

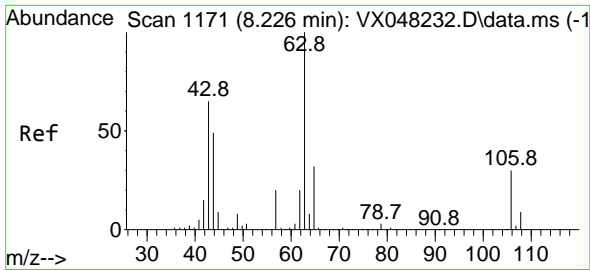


#57
 1,3-Dichloropropane
 Concen: 0.989 ug/l
 RT: 9.299 min Scan# 1347
 Delta R.T. 0.006 min
 Lab File: VX048229.D
 Acq: 20 Oct 2025 10:59



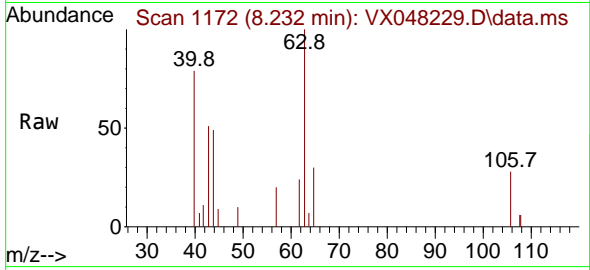
Tgt Ion: 76 Resp: 2174
 Ion Ratio Lower Upper
 76 100
 78 35.5 25.4 38.0





#58
 2-Chloroethyl Vinyl ether
 Concen: 3.381 ug/l
 RT: 8.232 min Scan# 1171
 Delta R.T. 0.006 min
 Lab File: VX048229.D
 Acq: 20 Oct 2025 10:59

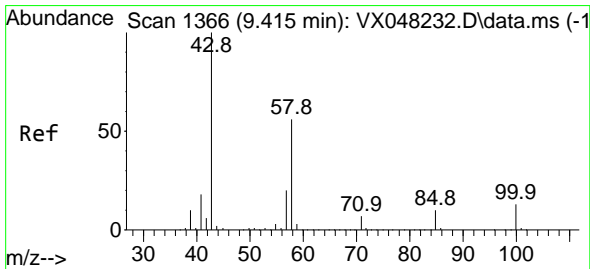
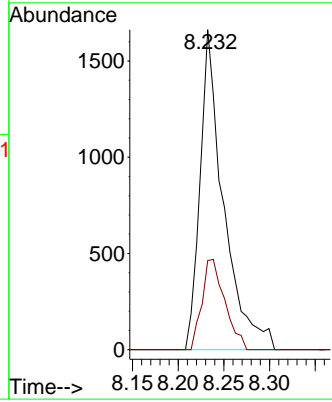
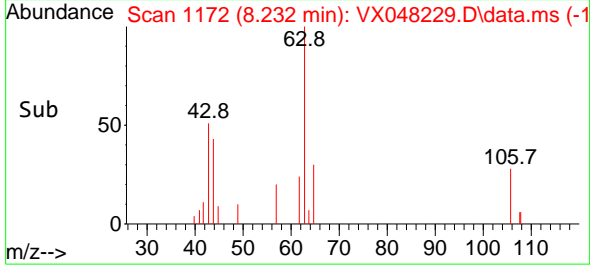
Instrument :
 MSVOA_X
ClientSampled :
 VSTDIC001



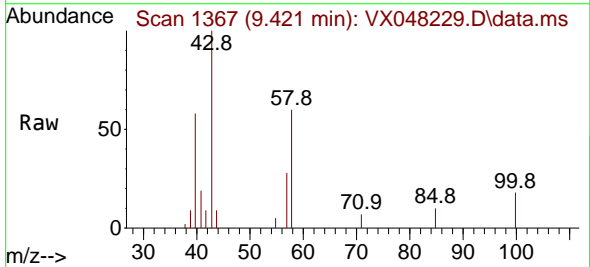
Tgt Ion: 63 Resp: 2970
 Ion Ratio Lower Upper
 63 100
 106 27.5 22.2 33.2

Manual Integrations
APPROVED

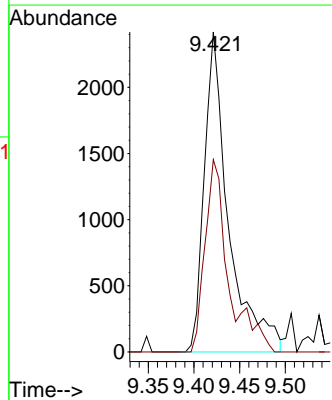
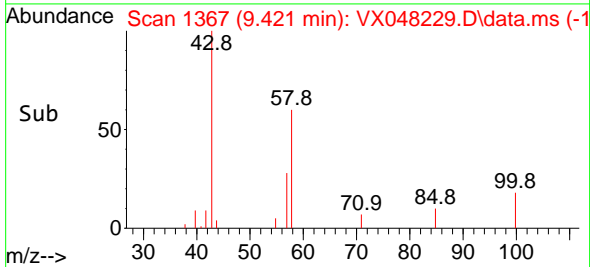
Reviewed By :John Carlone 10/21/2025
 Supervised By :Semsettin Yesilyurt 10/21/2025

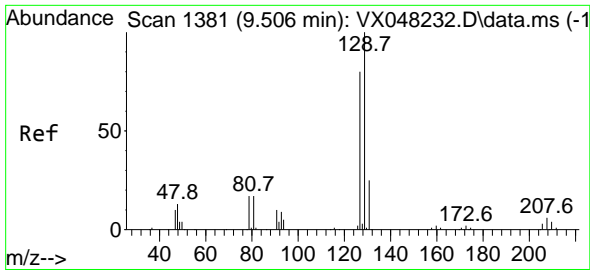


#59
 2-Hexanone
 Concen: 4.518 ug/l
 RT: 9.421 min Scan# 1367
 Delta R.T. 0.006 min
 Lab File: VX048229.D
 Acq: 20 Oct 2025 10:59



Tgt Ion: 43 Resp: 4456
 Ion Ratio Lower Upper
 43 100
 58 58.1 26.3 78.8





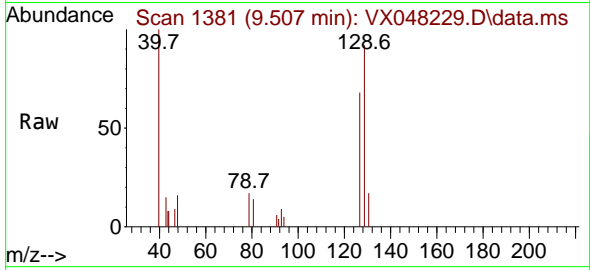
#60
 Dibromochloromethane
 Concen: 1.183 ug/l
 RT: 9.507 min Scan# 1381
 Delta R.T. 0.000 min
 Lab File: VX048229.D
 Acq: 20 Oct 2025 10:59

Instrument :

MSVOA_X

ClientSampleId :

VSTDIC001



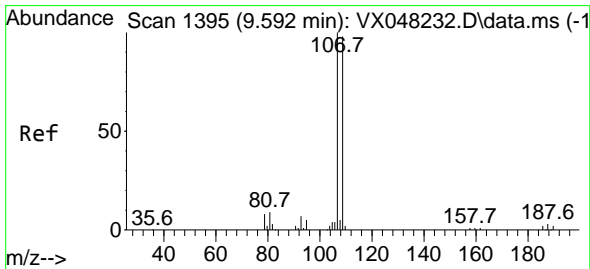
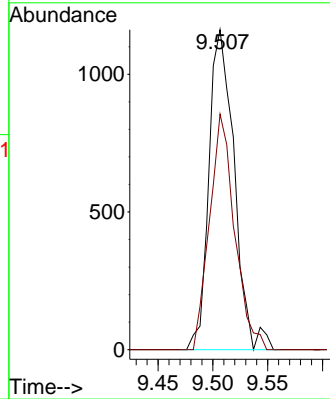
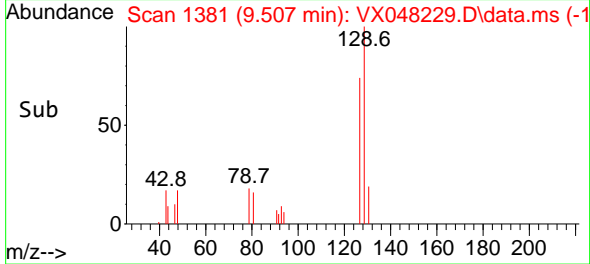
Tgt Ion:129 Resp: 186
 Ion Ratio Lower Upper
 129 100
 127 72.9 38.6 115.7

Manual Integrations

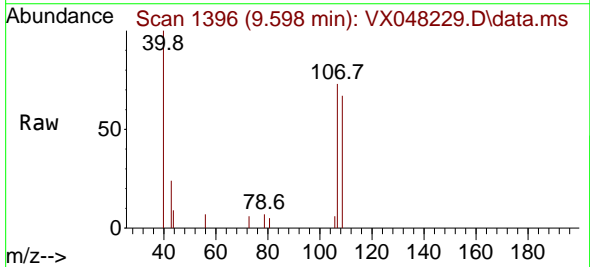
APPROVED

Reviewed By :John Carlone 10/21/2025

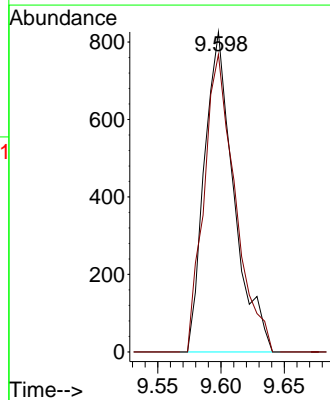
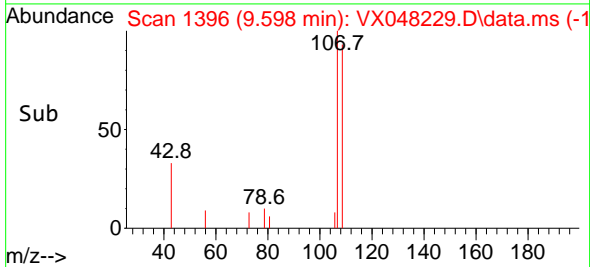
Supervised By :Semsettin Yesilyurt 10/21/2025

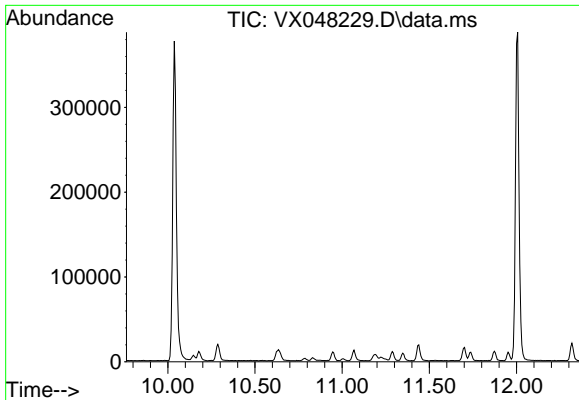


#61
 1,2-Dibromoethane
 Concen: 1.037 ug/l
 RT: 9.598 min Scan# 1396
 Delta R.T. 0.006 min
 Lab File: VX048229.D
 Acq: 20 Oct 2025 10:59



Tgt Ion:107 Resp: 1338
 Ion Ratio Lower Upper
 107 100
 109 98.6 77.0 115.4





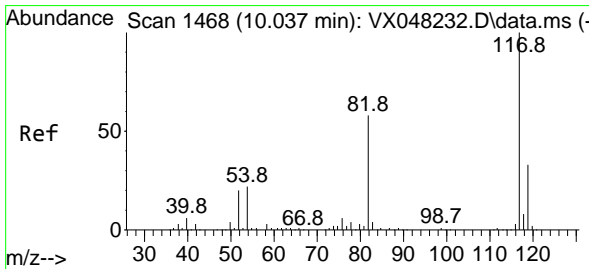
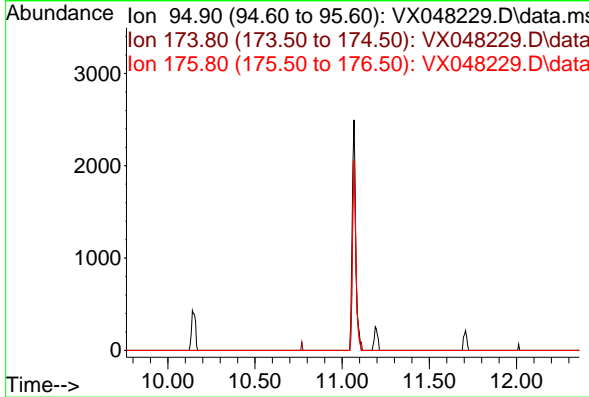
#62
 4-Bromofluorobenzene
 Concen: 0.000 ug/l
 Expected RT: 11.06 min
 Lab File: VX048229.D
 Acq: 20 Oct 2025 10:59

Instrument :
 MSVOA_X
ClientSampleId :
 VSTDIC001

Tgt Ion:	95
Sig	Exp Ratio
95	100
174	73.9
176	71.4

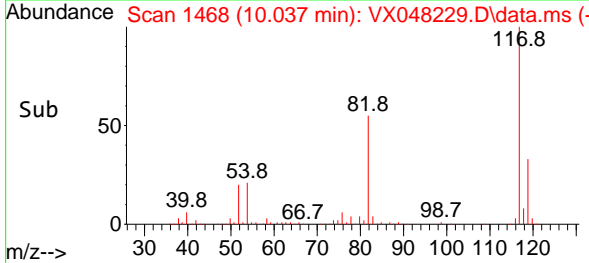
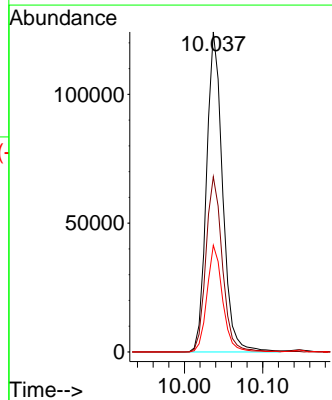
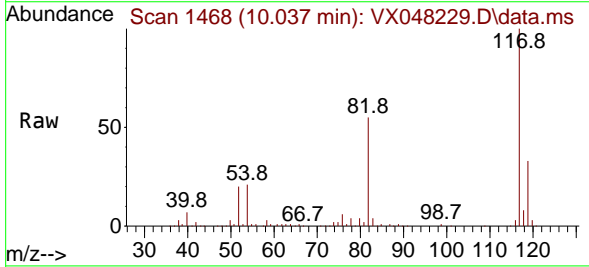
Manual Integrations
APPROVED

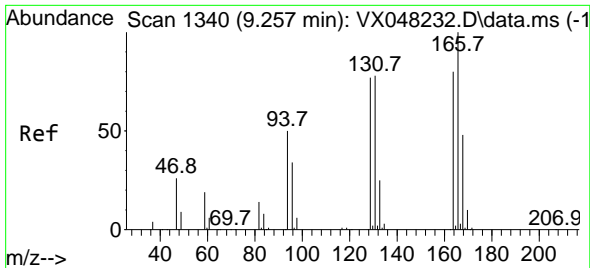
Reviewed By :John Carlone 10/21/2025
 Supervised By :Semsettin Yesilyurt 10/21/2025



#63
 Chlorobenzene-d5
 Concen: 50.000 ug/l
 RT: 10.037 min Scan# 1468
 Delta R.T. 0.000 min
 Lab File: VX048229.D
 Acq: 20 Oct 2025 10:59

Tgt Ion:	117	Resp:	177252
Ion Ratio	Lower	Upper	
117	100		
82	54.8	46.5	69.7
119	33.3	25.9	38.9





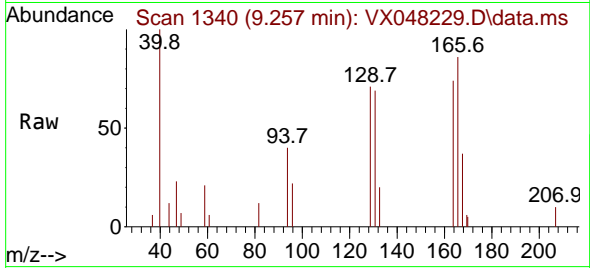
#64
 Tetrachloroethene
 Concen: 1.192 ug/l
 RT: 9.257 min Scan# 1340
 Delta R.T. 0.000 min
 Lab File: VX048229.D
 Acq: 20 Oct 2025 10:59

Instrument :

MSVOA_X

ClientSampleId :

VSTDIC001



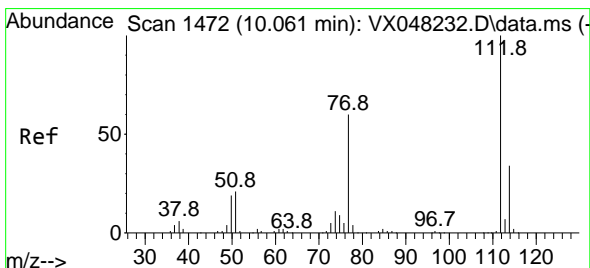
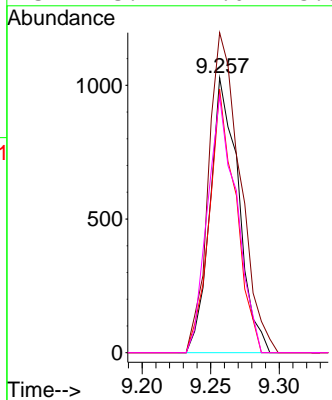
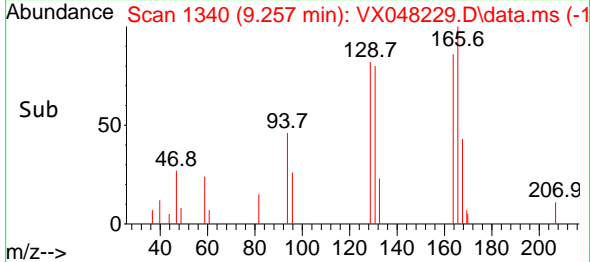
Tgt Ion:164 Resp: 148
 Ion Ratio Lower Upper
 164 100
 166 116.4 104.5 156.7
 129 95.9 81.8 122.6
 131 93.4 77.0 115.6

Manual Integrations

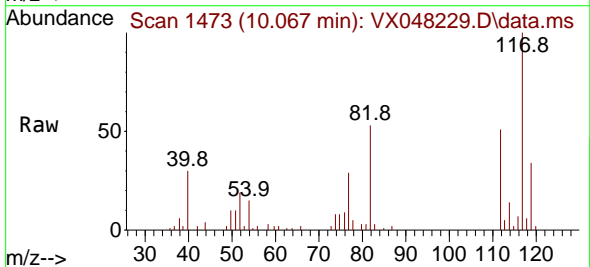
APPROVED

Reviewed By :John Carlone 10/21/2025

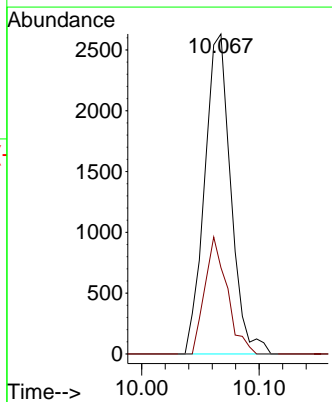
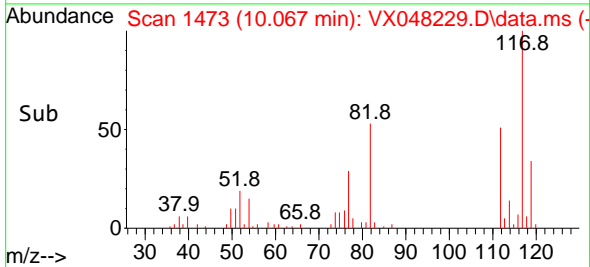
Supervised By :Semsettin Yesilyurt 10/21/2025

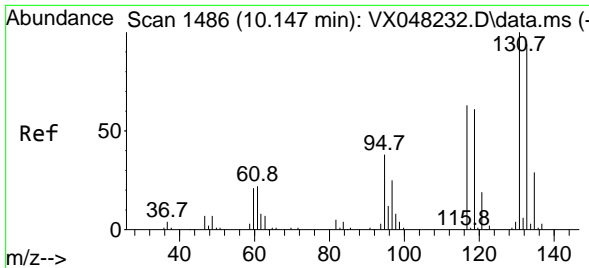


#65
 Chlorobenzene
 Concen: 1.051 ug/l
 RT: 10.067 min Scan# 1473
 Delta R.T. 0.006 min
 Lab File: VX048229.D
 Acq: 20 Oct 2025 10:59



Tgt Ion:112 Resp: 4073
 Ion Ratio Lower Upper
 112 100
 114 27.0 26.2 39.2





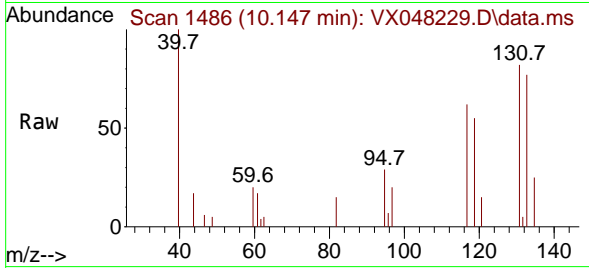
#66
 1,1,1,2-Tetrachloroethane
 Concen: 1.070 ug/l
 RT: 10.147 min Scan# 1486
 Delta R.T. 0.000 min
 Lab File: VX048229.D
 Acq: 20 Oct 2025 10:59

Instrument :

MSVOA_X

ClientSampleId :

VSTDIC001



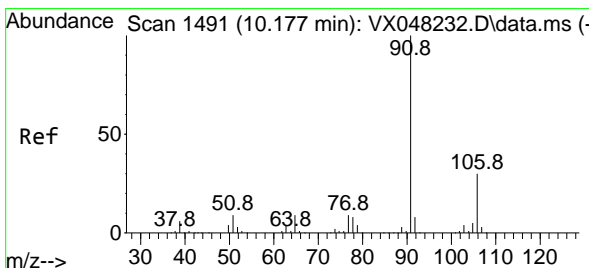
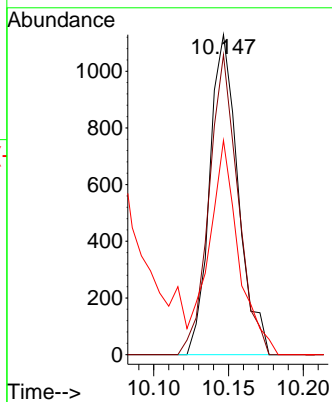
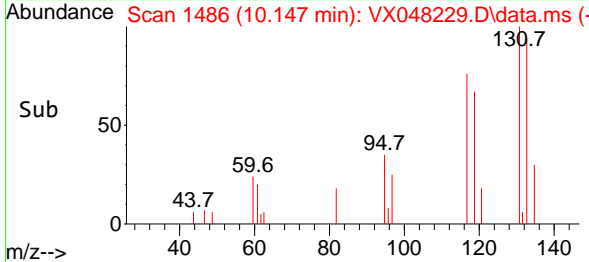
Tgt Ion:131 Resp: 1490
 Ion Ratio Lower Upper
 131 100
 133 95.1 47.6 142.8
 119 0.0 32.5 97.5

Manual Integrations

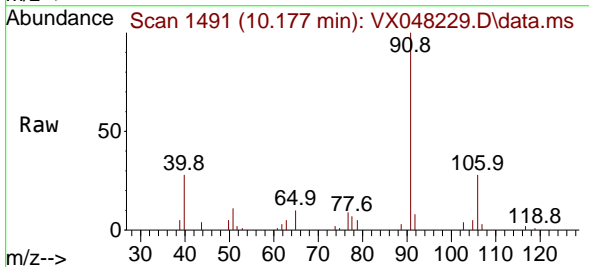
APPROVED

Reviewed By :John Carlone 10/21/2025

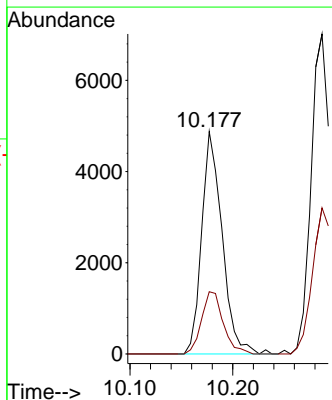
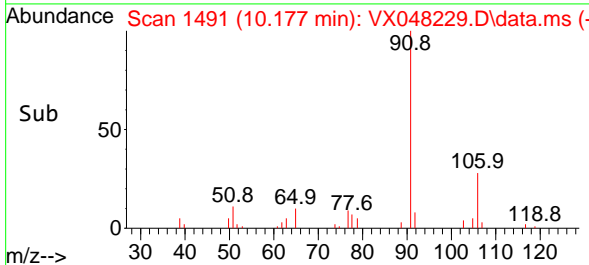
Supervised By :Semsettin Yesilyurt 10/21/2025

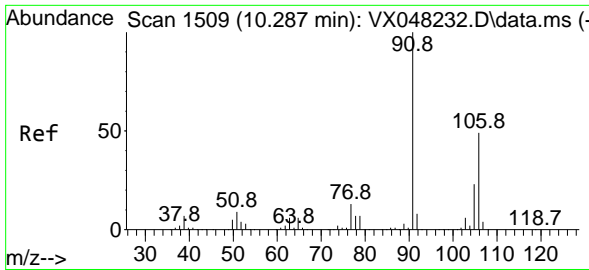


#67
 Ethyl Benzene
 Concen: 1.016 ug/l
 RT: 10.177 min Scan# 1491
 Delta R.T. 0.000 min
 Lab File: VX048229.D
 Acq: 20 Oct 2025 10:59



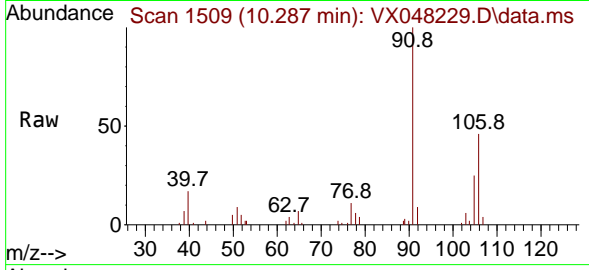
Tgt Ion: 91 Resp: 6752
 Ion Ratio Lower Upper
 91 100
 106 28.0 23.8 35.6





#68
 m/p-Xylenes
 Concen: 1.854 ug/l
 RT: 10.287 min Scan# 1509
 Delta R.T. 0.000 min
 Lab File: VX048229.D
 Acq: 20 Oct 2025 10:59

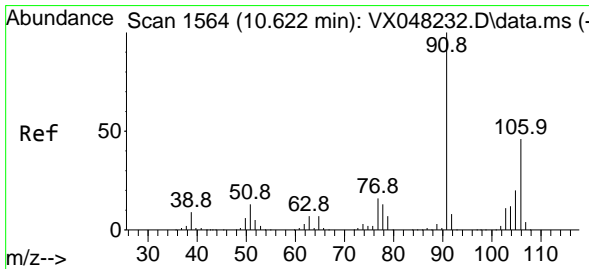
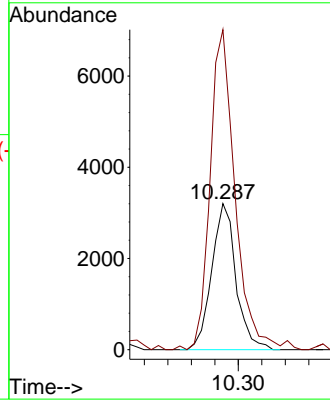
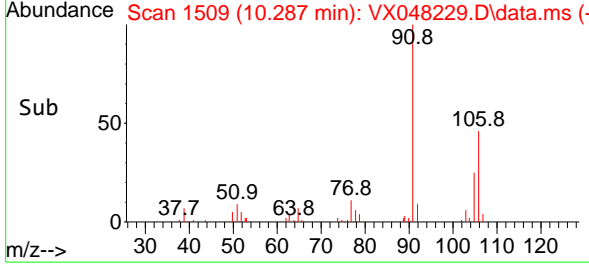
Instrument : MSVOA_X
 ClientSampleId : VSTDIC001



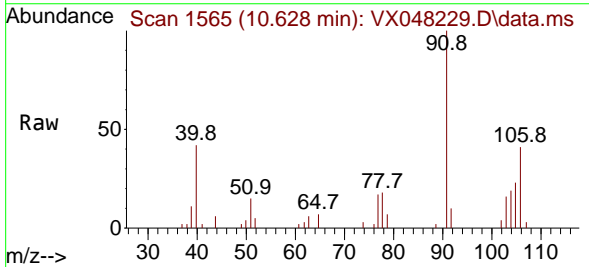
Tgt Ion:106 Resp: 4589
 Ion Ratio Lower Upper
 106 100
 91 225.6 167.9 251.9

Manual Integrations
 APPROVED

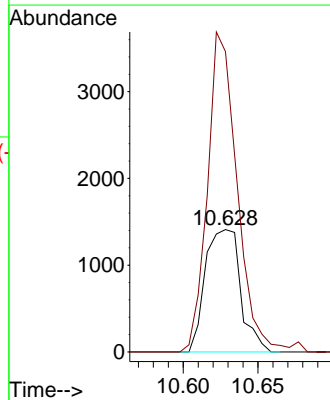
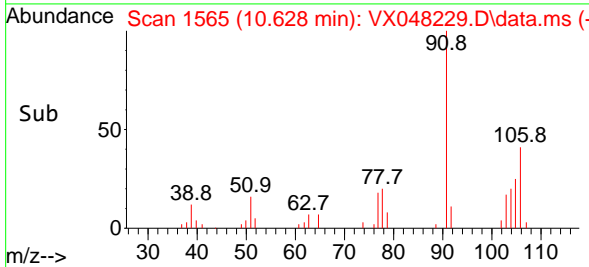
Reviewed By :John Carlone 10/21/2025
 Supervised By :Semsettin Yesilyurt 10/21/2025

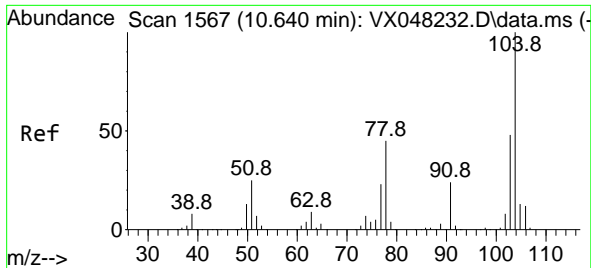


#69
 o-Xylene
 Concen: 0.993 ug/l
 RT: 10.628 min Scan# 1565
 Delta R.T. 0.006 min
 Lab File: VX048229.D
 Acq: 20 Oct 2025 10:59



Tgt Ion:106 Resp: 2313
 Ion Ratio Lower Upper
 106 100
 91 221.2 111.3 333.9





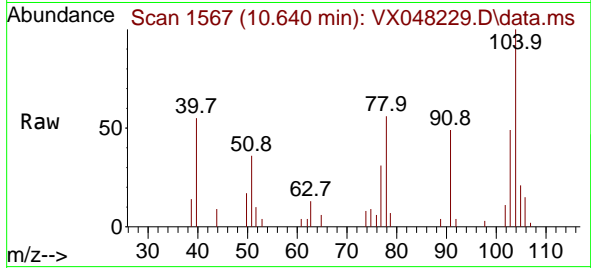
#70
 Styrene
 Concen: 0.932 ug/l
 RT: 10.640 min Scan# 1567
 Delta R.T. 0.000 min
 Lab File: VX048229.D
 Acq: 20 Oct 2025 10:59

Instrument :

MSVOA_X

Client SampleId :

VSTDIC001

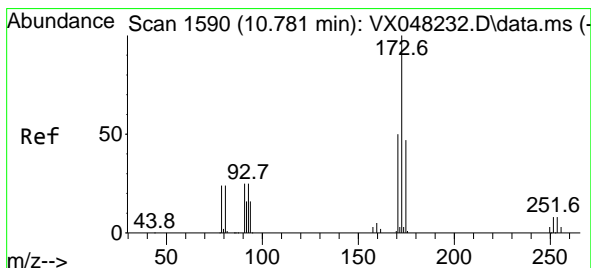
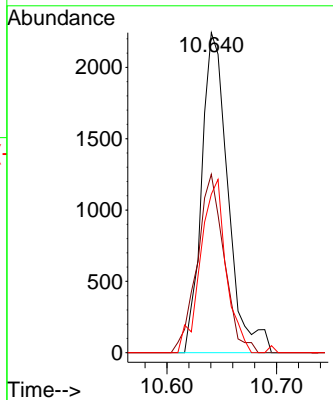
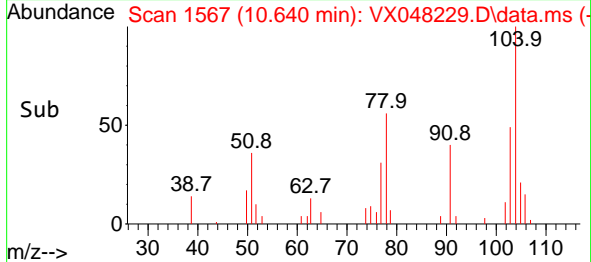


Tgt Ion:104 Resp: 373
 Ion Ratio Lower Upper
 104 100
 78 57.1 42.2 63.4
 103 52.6 43.0 64.4

Manual Integrations

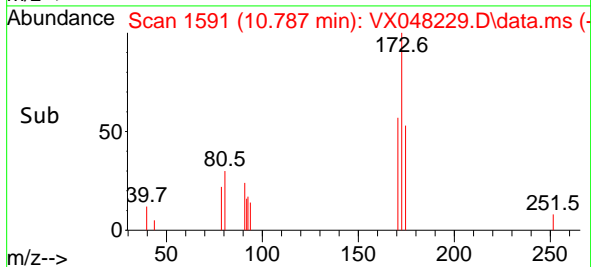
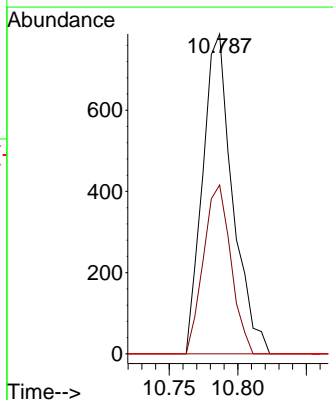
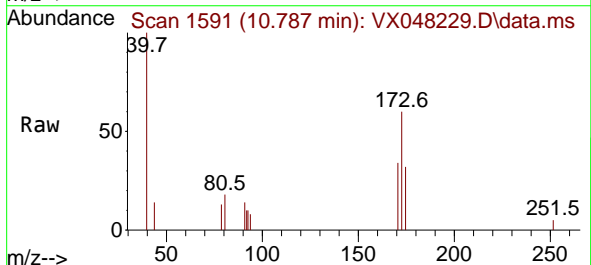
APPROVED

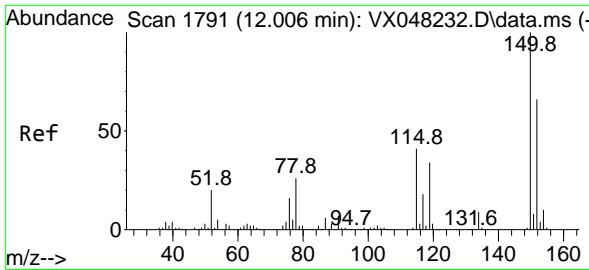
Reviewed By :John Carlone 10/21/2025
 Supervised By :Semsettin Yesilyurt 10/21/2025



#71
 Bromoform
 Concen: 1.168 ug/l
 RT: 10.787 min Scan# 1591
 Delta R.T. 0.006 min
 Lab File: VX048229.D
 Acq: 20 Oct 2025 10:59

Tgt Ion:173 Resp: 1198
 Ion Ratio Lower Upper
 173 100
 175 48.4 24.0 72.0
 254 0.0 0.0 0.0





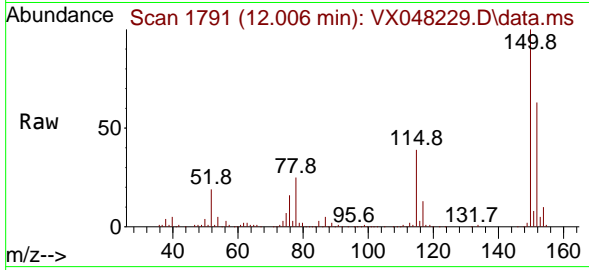
#72
 1,4-Dichlorobenzene-d4
 Concen: 50.000 ug/l
 RT: 12.006 min Scan# 1791
 Delta R.T. 0.000 min
 Lab File: VX048229.D
 Acq: 20 Oct 2025 10:59

Instrument :

MSVOA_X

ClientSampleId :

VSTDIC001



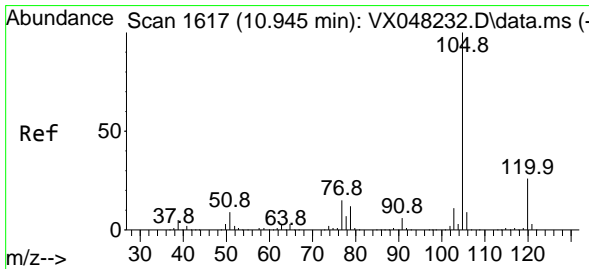
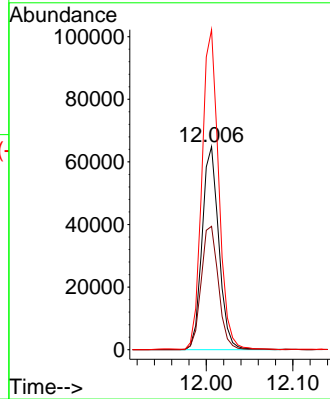
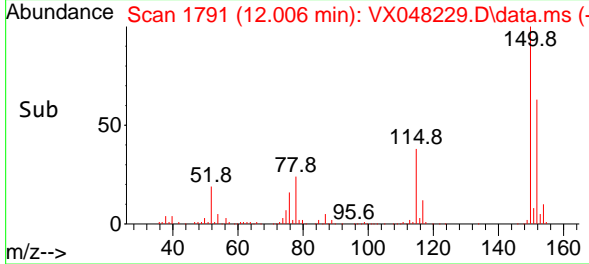
Tgt Ion:152 Resp: 8694
 Ion Ratio Lower Upper
 152 100
 115 63.0 43.1 129.4
 150 158.2 0.0 353.0

Manual Integrations

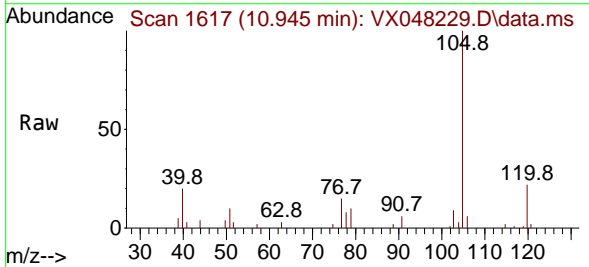
APPROVED

Reviewed By :John Carlone 10/21/2025

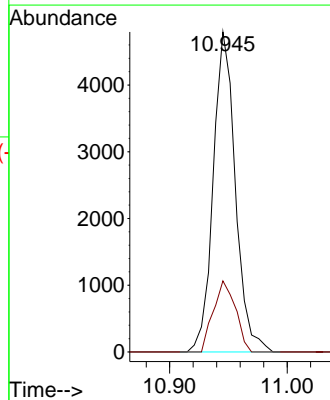
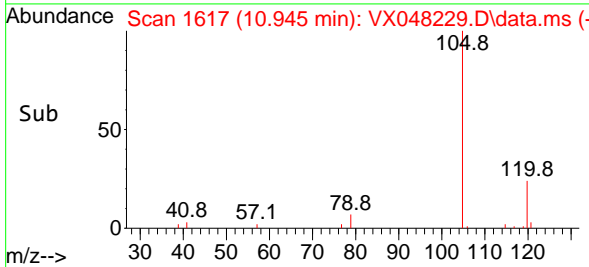
Supervised By :Semsettin Yesilyurt 10/21/2025

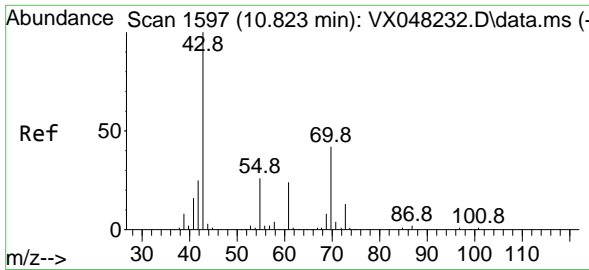


#73
 Isopropylbenzene
 Concen: 1.040 ug/l
 RT: 10.945 min Scan# 1617
 Delta R.T. 0.000 min
 Lab File: VX048229.D
 Acq: 20 Oct 2025 10:59



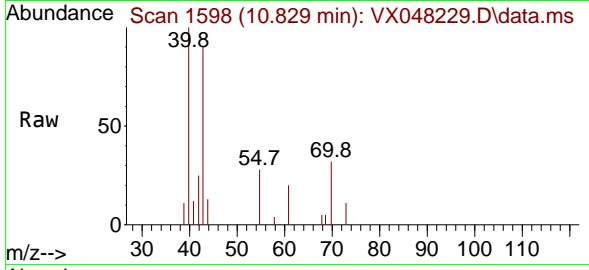
Tgt Ion:105 Resp: 6291
 Ion Ratio Lower Upper
 105 100
 120 22.2 13.0 38.9





#74
 N-amy1 acetate
 Concen: 0.947 ug/l
 RT: 10.829 min Scan# 1597
 Delta R.T. 0.006 min
 Lab File: VX048229.D
 Acq: 20 Oct 2025 10:59

Instrument :
 MSVOA_X
ClientSampleId :
 VSTDIC001

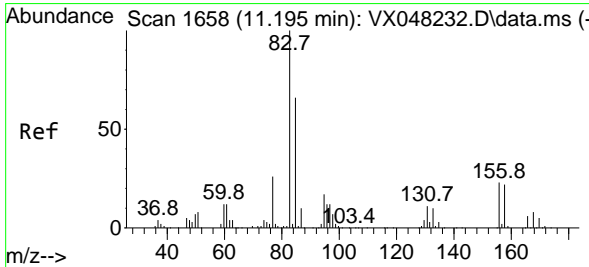
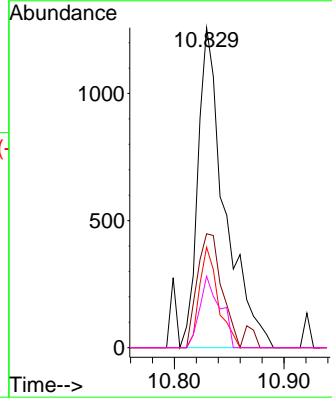
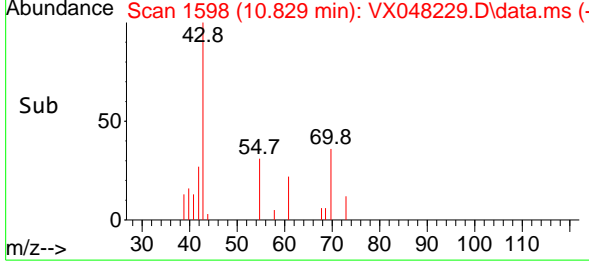


Tgt Ion: 43 Resp: 213

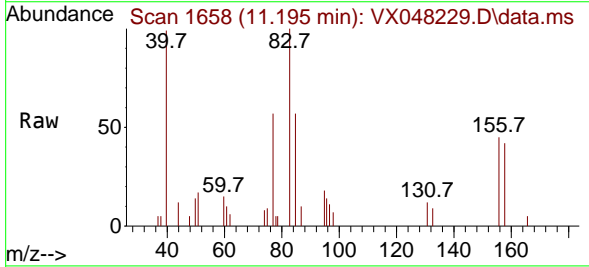
Ion	Ratio	Lower	Upper
43	100		
70	32.8	32.2	48.2
55	22.0	19.1	28.7
61	17.2	18.6	28.0#

Manual Integrations
APPROVED

Reviewed By :John Carlone 10/21/2025
 Supervised By :Semsetin Yesilyurt 10/21/2025

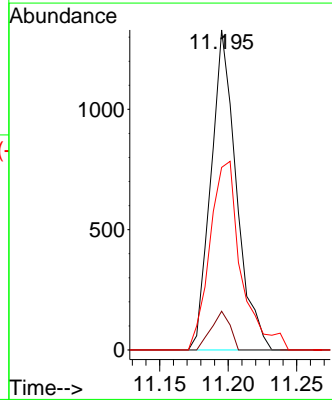
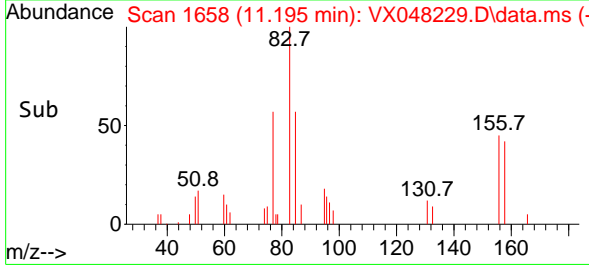


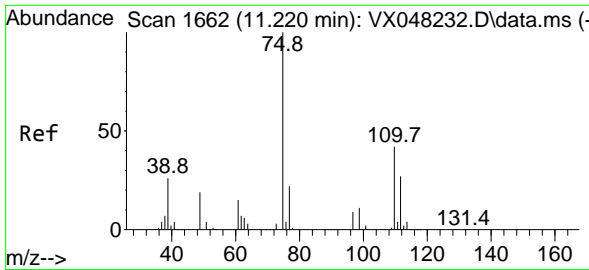
#75
 1,1,2,2-Tetrachloroethane
 Concen: 1.003 ug/l
 RT: 11.195 min Scan# 1658
 Delta R.T. 0.000 min
 Lab File: VX048229.D
 Acq: 20 Oct 2025 10:59



Tgt Ion: 83 Resp: 1718

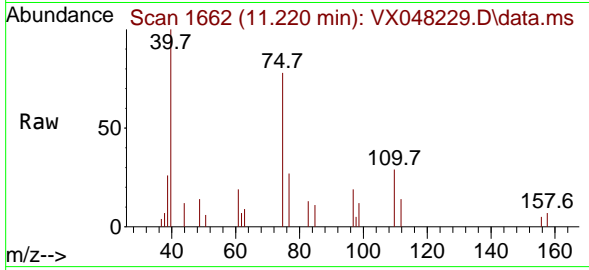
Ion	Ratio	Lower	Upper
83	100		
131	8.9	4.8	14.4
85	72.1	31.9	95.7





#76
 1,2,3-Trichloropropane
 Concen: 1.216 ug/l m
 RT: 11.220 min Scan# 1662
 Delta R.T. 0.000 min
 Lab File: VX048229.D
 Acq: 20 Oct 2025 10:59

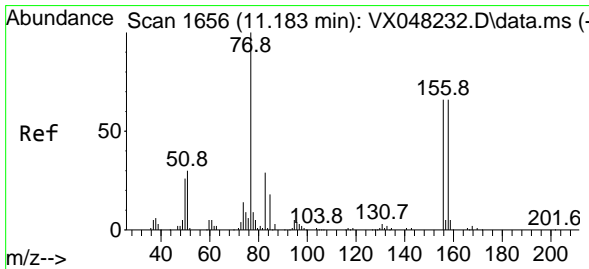
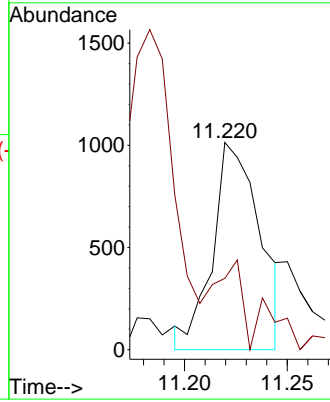
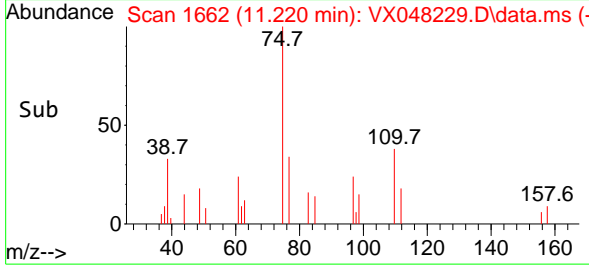
Instrument : MSVOA_X
 ClientSampleId : VSTDIC001



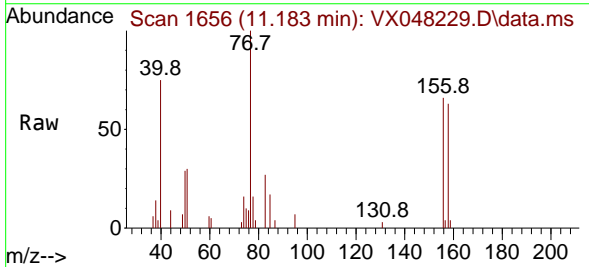
Tgt Ion: 75 Resp: 161
 Ion Ratio Lower Upper
 75 100
 77 40.2 22.4 67.2

Manual Integrations
APPROVED

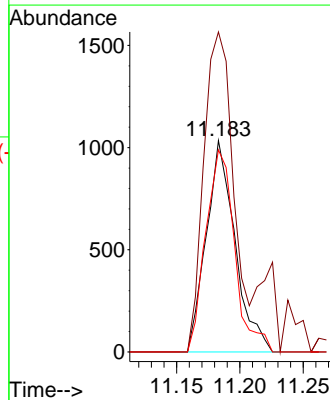
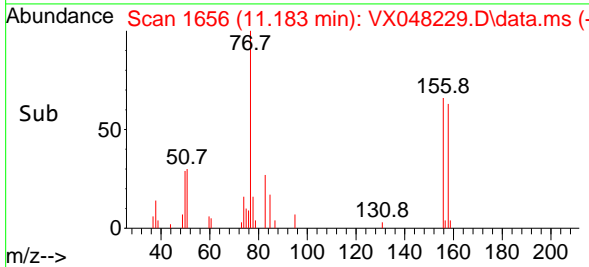
Reviewed By :John Carlone 10/21/2025
 Supervised By :Semsettin Yesilyurt 10/21/2025

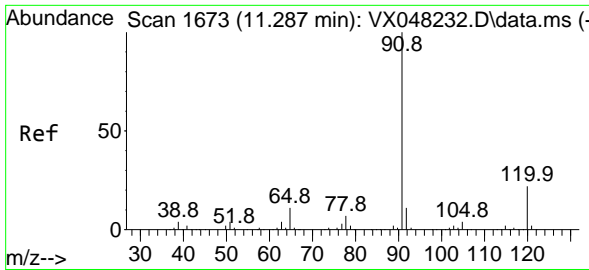


#77
 Bromobenzene
 Concen: 1.080 ug/l
 RT: 11.183 min Scan# 1656
 Delta R.T. 0.006 min
 Lab File: VX048229.D
 Acq: 20 Oct 2025 10:59



Tgt Ion:156 Resp: 1635
 Ion Ratio Lower Upper
 156 100
 77 155.2 87.0 261.0
 158 96.4 47.8 143.4





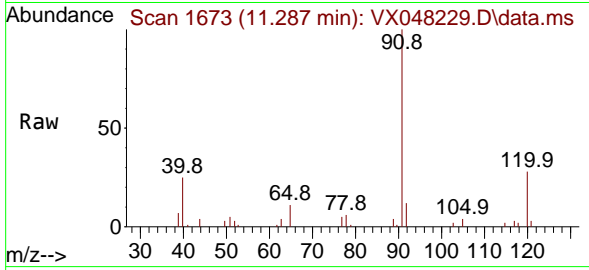
#78
 n-propylbenzene
 Concen: 0.949 ug/l
 RT: 11.287 min Scan# 1673
 Delta R.T. 0.000 min
 Lab File: VX048229.D
 Acq: 20 Oct 2025 10:59

Instrument :

MSVOA_X

ClientSampleId :

VSTDICC001



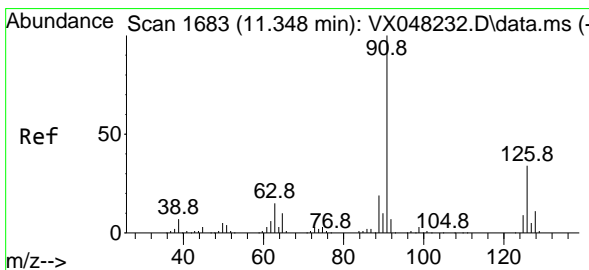
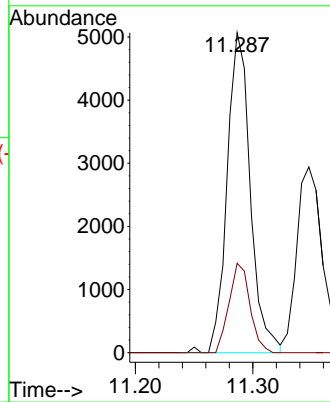
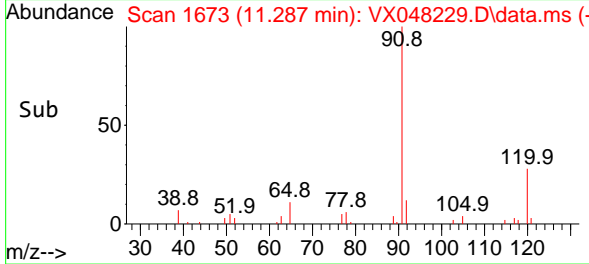
Tgt Ion: 91 Resp: 6950
 Ion Ratio Lower Upper
 91 100
 120 25.2 11.1 33.1

Manual Integrations

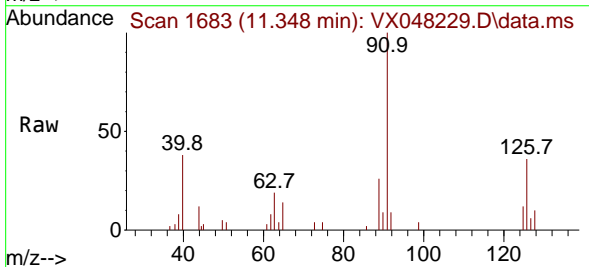
APPROVED

Reviewed By :John Carlone 10/21/2025

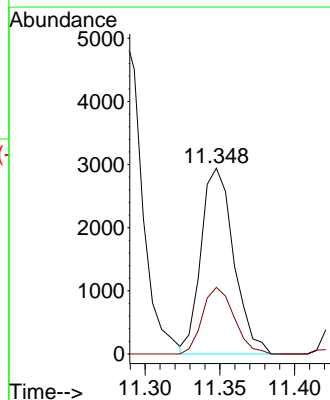
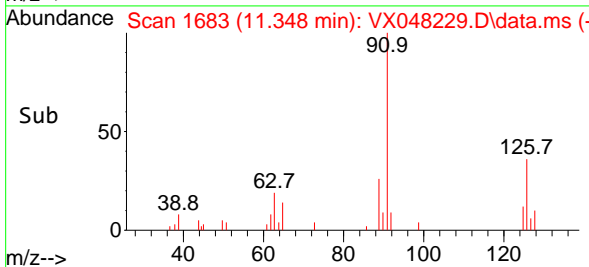
Supervised By :Semsettin Yesilyurt 10/21/2025

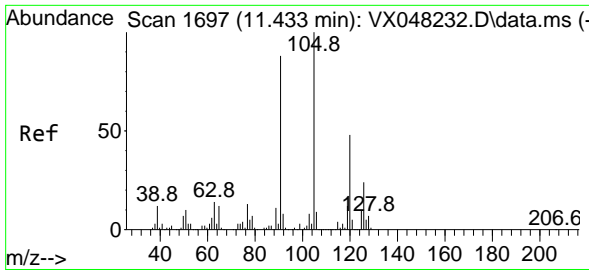


#79
 2-Chlorotoluene
 Concen: 1.010 ug/l
 RT: 11.348 min Scan# 1683
 Delta R.T. 0.000 min
 Lab File: VX048229.D
 Acq: 20 Oct 2025 10:59



Tgt Ion: 91 Resp: 4477
 Ion Ratio Lower Upper
 91 100
 126 34.8 16.4 49.4





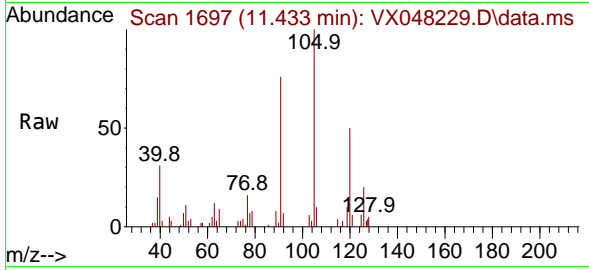
#80
 1,3,5-Trimethylbenzene
 Concen: 1.047 ug/l
 RT: 11.433 min Scan# 1697
 Delta R.T. 0.000 min
 Lab File: VX048229.D
 Acq: 20 Oct 2025 10:59

Instrument :

MSVOA_X

ClientSampleId :

VSTDIC001



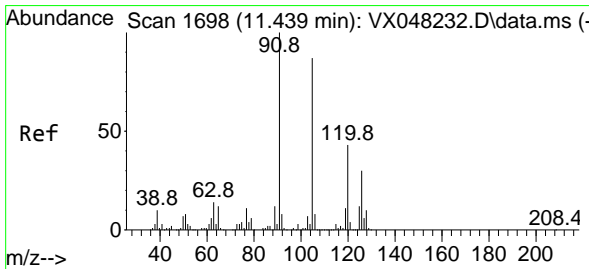
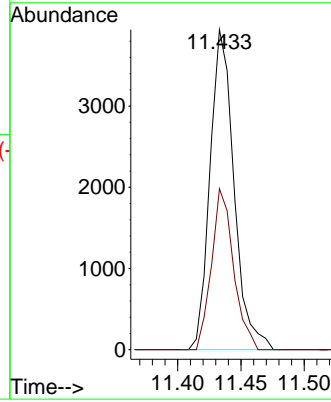
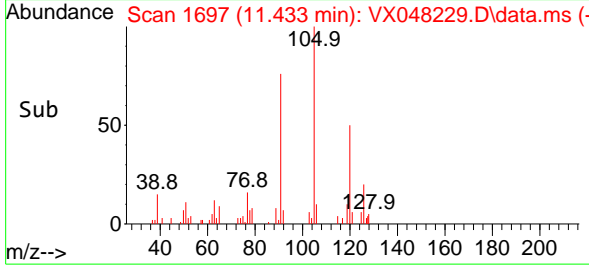
Tgt Ion: 105 Resp: 5190
 Ion Ratio Lower Upper
 105 100
 120 46.2 24.0 72.0

Manual Integrations

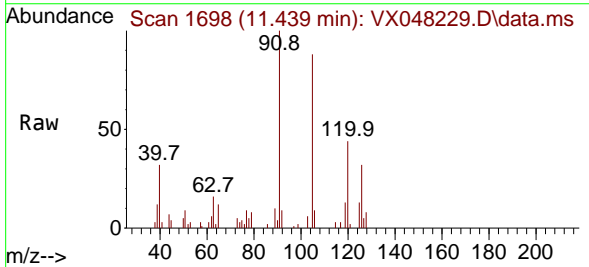
APPROVED

Reviewed By :John Carlone 10/21/2025

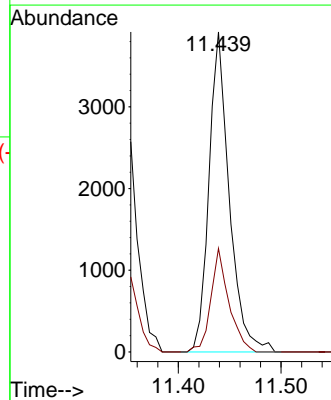
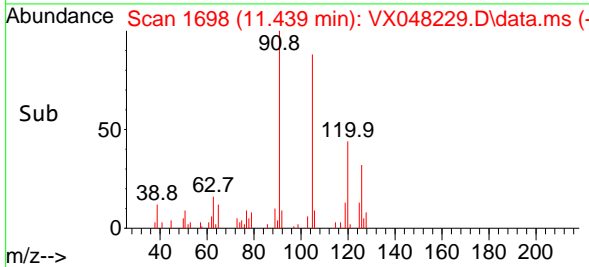
Supervised By :Semsettin Yesilyurt 10/21/2025

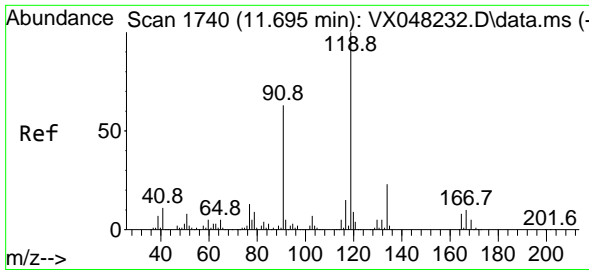


#82
 4-Chlorotoluene
 Concen: 1.034 ug/l
 RT: 11.439 min Scan# 1698
 Delta R.T. 0.006 min
 Lab File: VX048229.D
 Acq: 20 Oct 2025 10:59



Tgt Ion: 91 Resp: 5385
 Ion Ratio Lower Upper
 91 100
 126 28.7 14.1 42.4





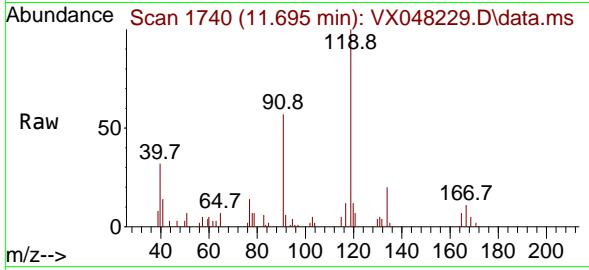
#83
 tert-Butylbenzene
 Concen: 1.085 ug/l
 RT: 11.695 min Scan# 1740
 Delta R.T. 0.000 min
 Lab File: VX048229.D
 Acq: 20 Oct 2025 10:59

Instrument :

MSVOA_X

ClientSampleId :

VSTDIC001



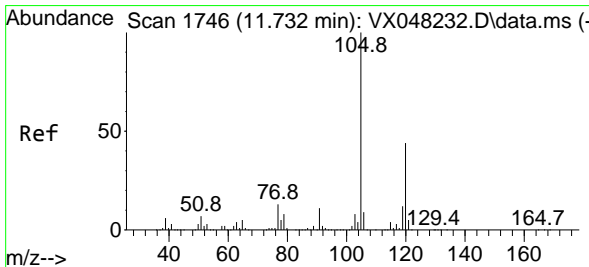
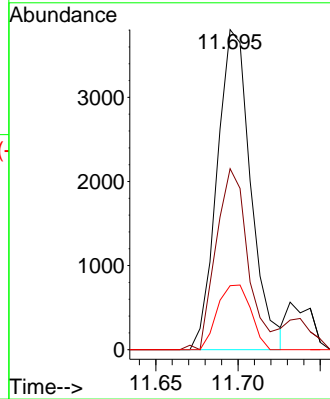
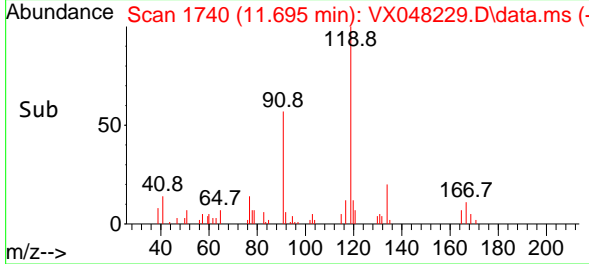
Tgt Ion:119 Resp: 5439
 Ion Ratio Lower Upper
 119 100
 91 53.0 30.3 91.0
 134 19.9 11.4 34.2

Manual Integrations

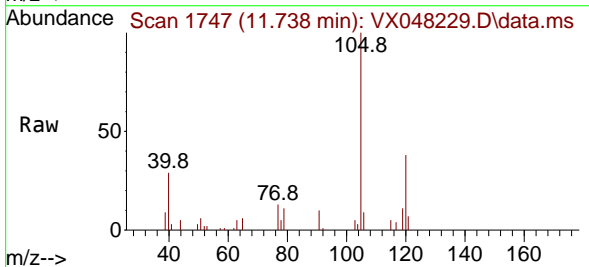
APPROVED

Reviewed By :John Carlone 10/21/2025

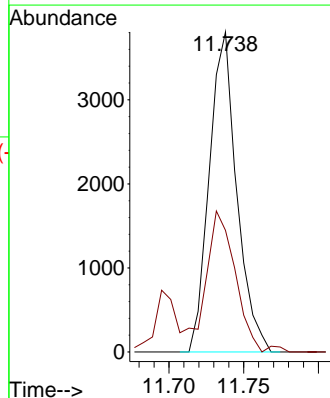
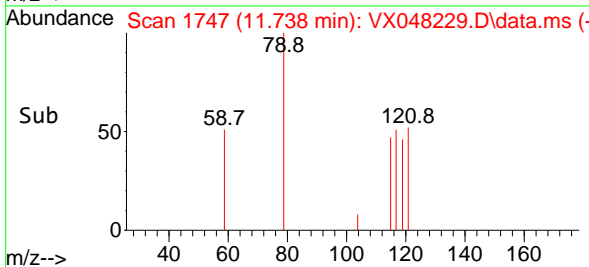
Supervised By :Semsettin Yesilyurt 10/21/2025

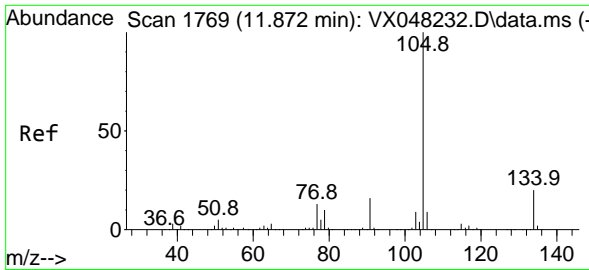


#84
 1,2,4-Trimethylbenzene
 Concen: 0.982 ug/l
 RT: 11.738 min Scan# 1747
 Delta R.T. 0.006 min
 Lab File: VX048229.D
 Acq: 20 Oct 2025 10:59



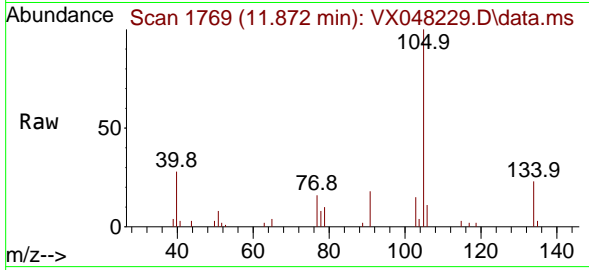
Tgt Ion:105 Resp: 4854
 Ion Ratio Lower Upper
 105 100
 120 43.9 22.1 66.5





#85
 sec-Butylbenzene
 Concen: 1.075 ug/l
 RT: 11.872 min Scan# 1769
 Delta R.T. 0.000 min
 Lab File: VX048229.D
 Acq: 20 Oct 2025 10:59

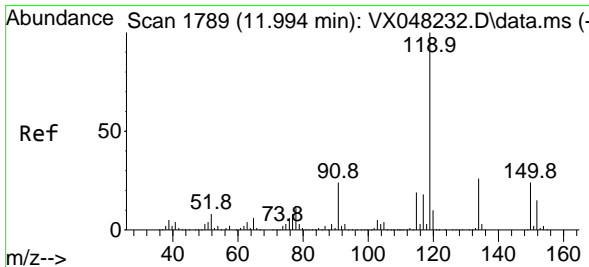
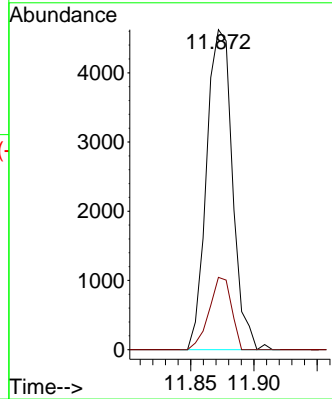
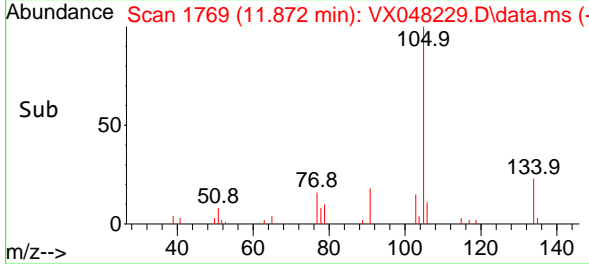
Instrument : MSVOA_X
 ClientSampleId : VSTDIC001



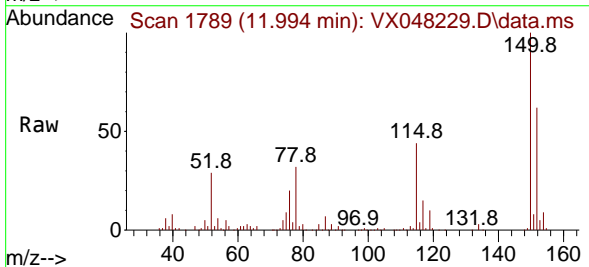
Tgt Ion:105 Resp: 6589
 Ion Ratio Lower Upper
 105 100
 134 19.4 10.1 30.1

Manual Integrations
APPROVED

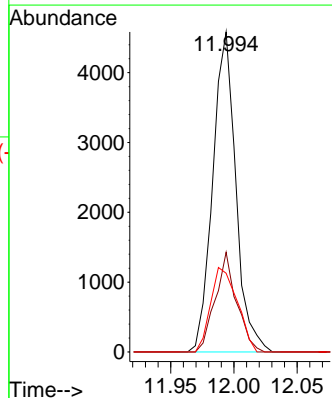
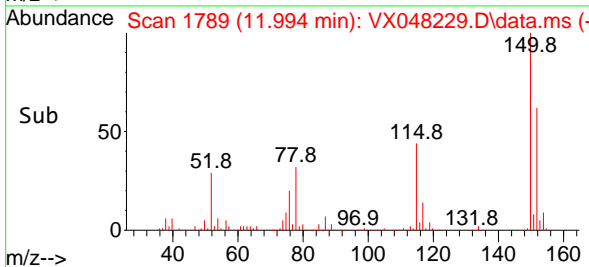
Reviewed By :John Carlone 10/21/2025
 Supervised By :Semsettin Yesilyurt 10/21/2025

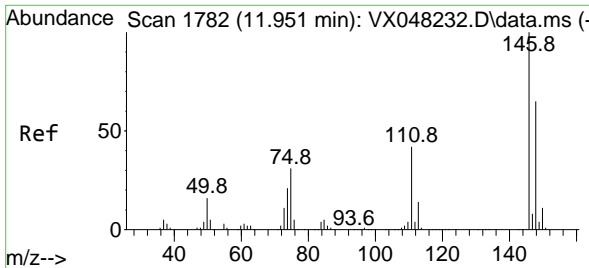


#86
 p-Isopropyltoluene
 Concen: 1.125 ug/l
 RT: 11.994 min Scan# 1789
 Delta R.T. 0.006 min
 Lab File: VX048229.D
 Acq: 20 Oct 2025 10:59



Tgt Ion:119 Resp: 5812
 Ion Ratio Lower Upper
 119 100
 134 28.8 13.0 39.0
 91 30.5 12.1 36.3





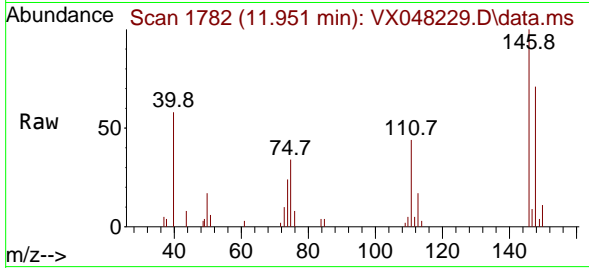
#87
 1,3-Dichlorobenzene
 Concen: 1.145 ug/l
 RT: 11.951 min Scan# 1782
 Delta R.T. 0.000 min
 Lab File: VX048229.D
 Acq: 20 Oct 2025 10:59

Instrument :

MSVOA_X

ClientSampleId :

VSTDIC001



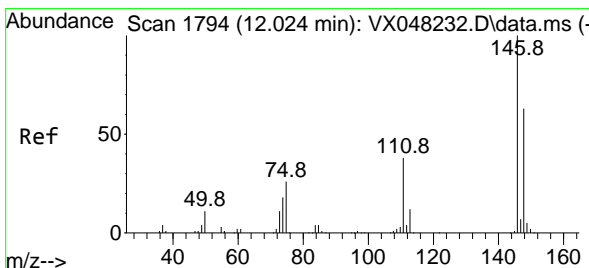
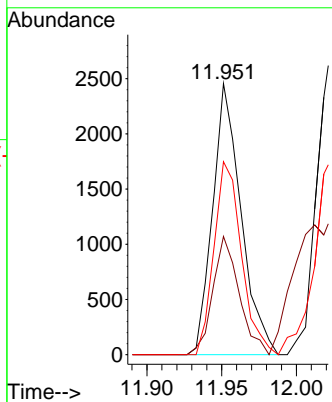
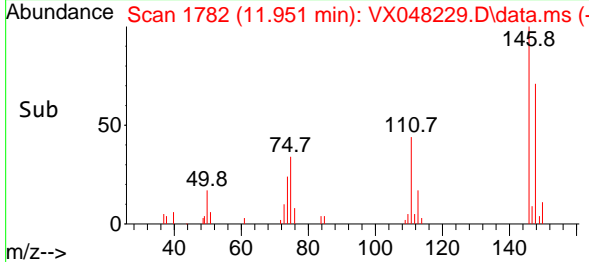
Tgt Ion:146 Resp: 3239
 Ion Ratio Lower Upper
 146 100
 111 40.5 20.4 61.2
 148 68.9 31.9 95.9

Manual Integrations

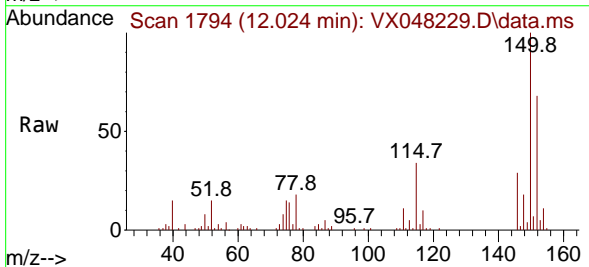
APPROVED

Reviewed By :John Carlone 10/21/2025

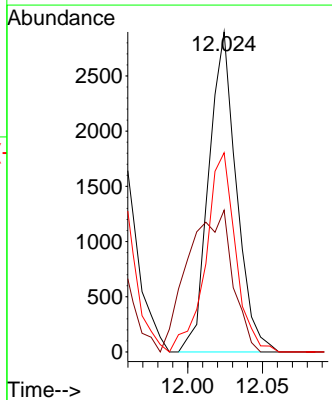
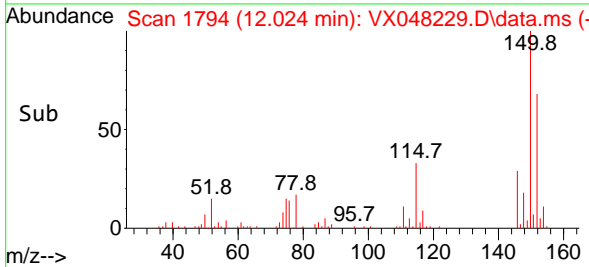
Supervised By :Semsettin Yesilyurt 10/21/2025

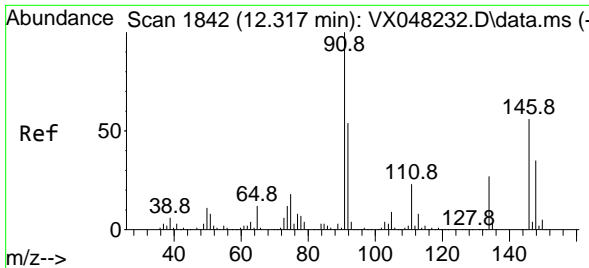


#88
 1,4-Dichlorobenzene
 Concen: 1.270 ug/l m
 RT: 12.024 min Scan# 1794
 Delta R.T. 0.000 min
 Lab File: VX048229.D
 Acq: 20 Oct 2025 10:59



Tgt Ion:146 Resp: 3727
 Ion Ratio Lower Upper
 146 100
 111 35.2 20.1 60.2
 148 59.9 31.8 95.3





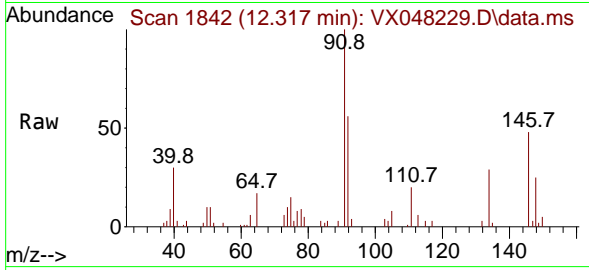
#89
 n-Butylbenzene
 Concen: 1.202 ug/l
 RT: 12.317 min Scan# 1842
 Delta R.T. 0.006 min
 Lab File: VX048229.D
 Acq: 20 Oct 2025 10:59

Instrument :

MSVOA_X

ClientSampleId :

VSTDIC001

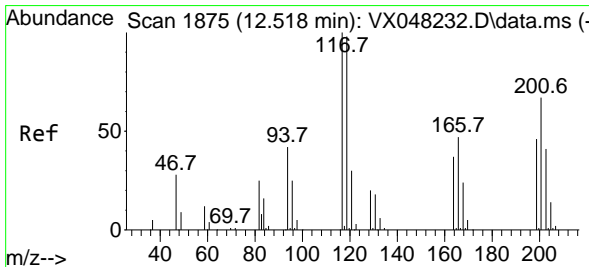
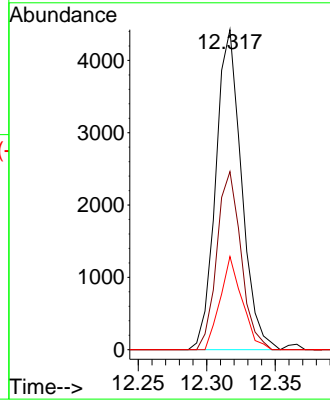
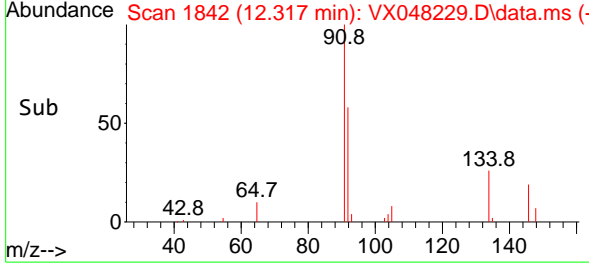


Tgt Ion: 91 Resp: 578
 Ion Ratio Lower Upper
 91 100
 92 52.3 26.9 80.6
 134 24.9 12.7 38.1

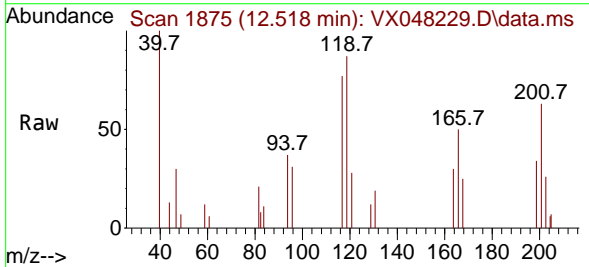
Manual Integrations

APPROVED

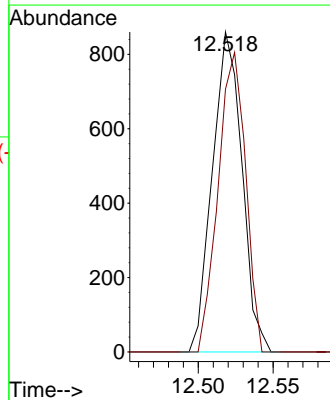
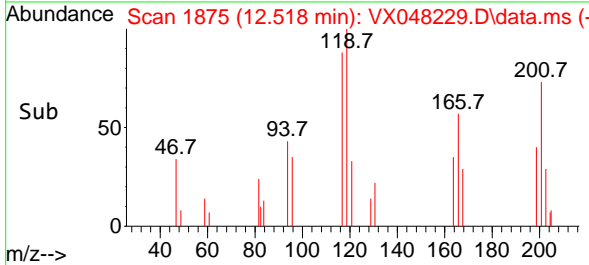
Reviewed By :John Carlone 10/21/2025
 Supervised By :Semsettin Yesilyurt 10/21/2025

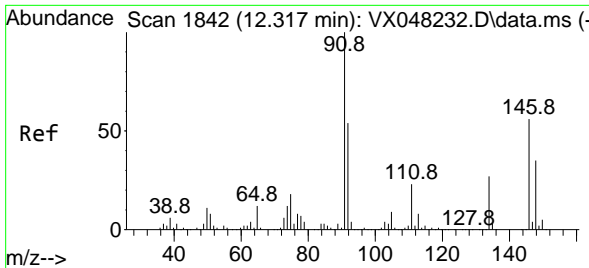


#90
 Hexachloroethane
 Concen: 1.084 ug/l
 RT: 12.518 min Scan# 1875
 Delta R.T. 0.000 min
 Lab File: VX048229.D
 Acq: 20 Oct 2025 10:59



Tgt Ion:117 Resp: 1182
 Ion Ratio Lower Upper
 117 100
 201 87.1 34.1 102.2





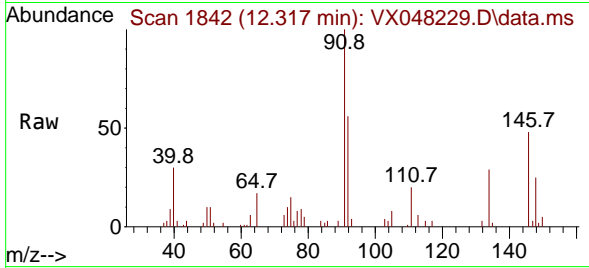
#91
 1,2-Dichlorobenzene
 Concen: 1.172 ug/l
 RT: 12.317 min Scan# 1842
 Delta R.T. 0.000 min
 Lab File: VX048229.D
 Acq: 20 Oct 2025 10:59

Instrument :

MSVOA_X

ClientSampleId :

VSTDIC001



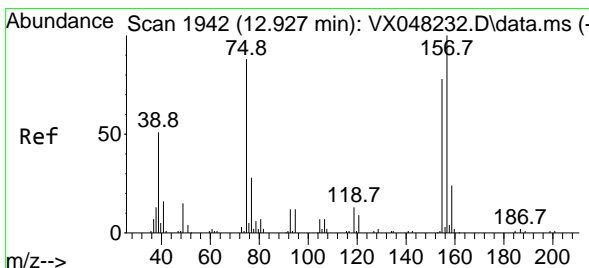
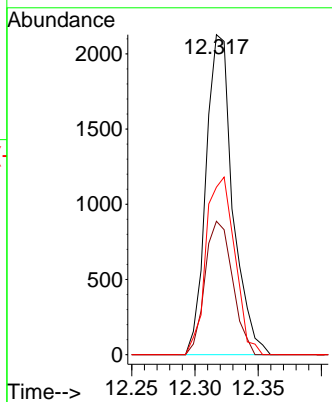
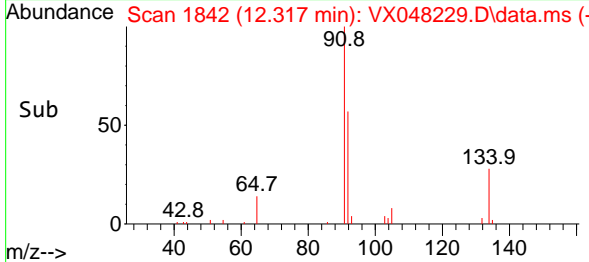
Tgt Ion:146 Resp: 313
 Ion Ratio Lower Upper
 146 100
 111 42.9 21.9 65.5
 148 59.5 31.9 95.5

Manual Integrations

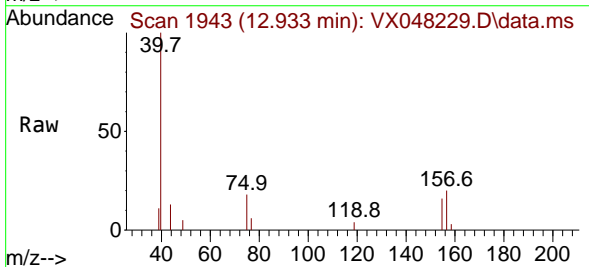
APPROVED

Reviewed By :John Carlone 10/21/2025

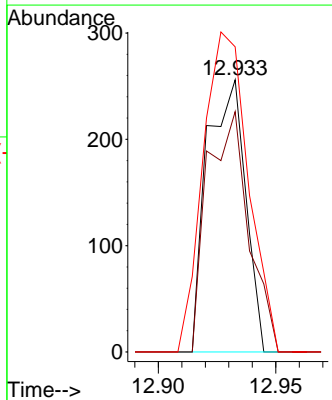
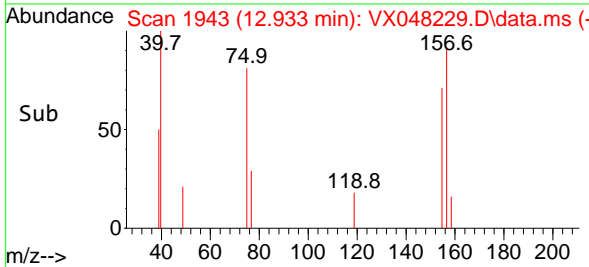
Supervised By :Semsettin Yesilyurt 10/21/2025

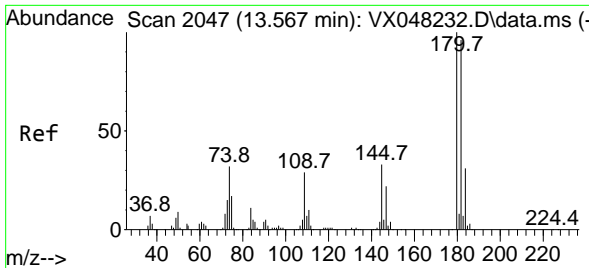


#92
 1,2-Dibromo-3-Chloropropane
 Concen: 0.926 ug/l
 RT: 12.933 min Scan# 1943
 Delta R.T. 0.012 min
 Lab File: VX048229.D
 Acq: 20 Oct 2025 10:59



Tgt Ion: 75 Resp: 290
 Ion Ratio Lower Upper
 75 100
 155 95.2 42.8 128.4
 157 139.0 54.2 162.6





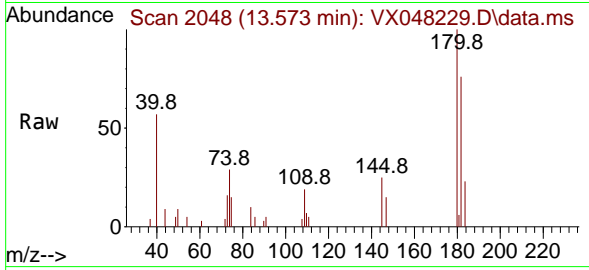
#93
 1,2,4-Trichlorobenzene
 Concen: 1.587 ug/l
 RT: 13.573 min Scan# 2048
 Delta R.T. 0.006 min
 Lab File: VX048229.D
 Acq: 20 Oct 2025 10:59

Instrument :

MSVOA_X

ClientSampleId :

VSTDIC001



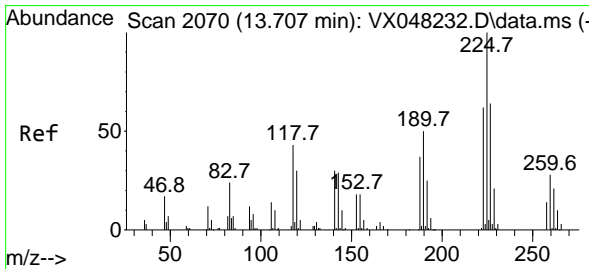
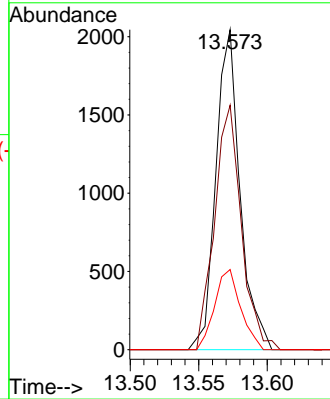
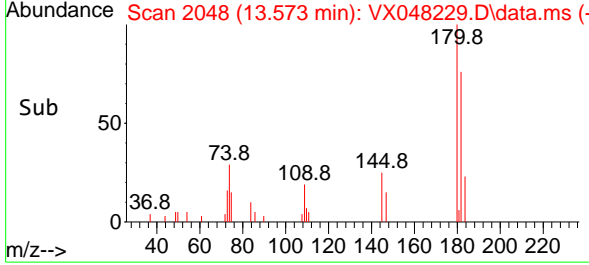
Tgt Ion:180 Resp: 250
 Ion Ratio Lower Upper
 180 100
 182 84.5 47.3 142.0
 145 27.1 16.3 48.9

Manual Integrations

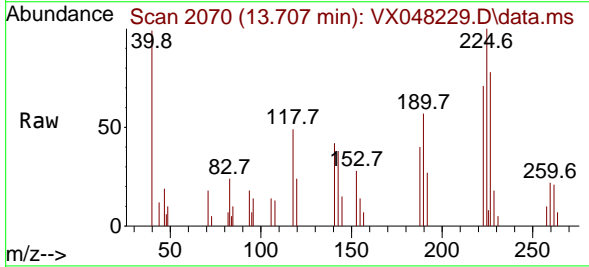
APPROVED

Reviewed By :John Carlone 10/21/2025

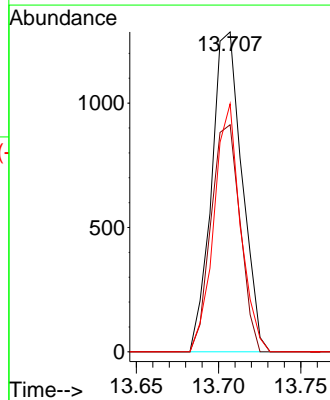
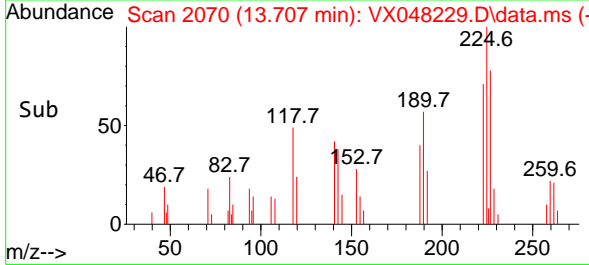
Supervised By :Semsettin Yesilyurt 10/21/2025

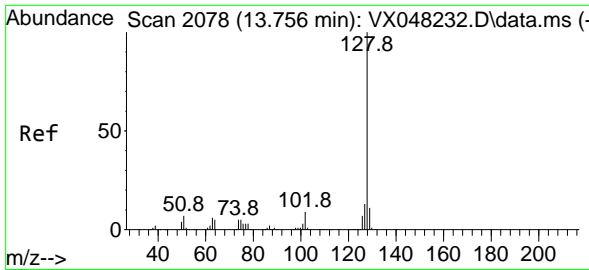


#94
 Hexachlorobutadiene
 Concen: 2.724 ug/l
 RT: 13.707 min Scan# 2070
 Delta R.T. 0.006 min
 Lab File: VX048229.D
 Acq: 20 Oct 2025 10:59



Tgt Ion:225 Resp: 1658
 Ion Ratio Lower Upper
 225 100
 223 67.8 32.6 97.7
 227 67.7 32.5 97.4





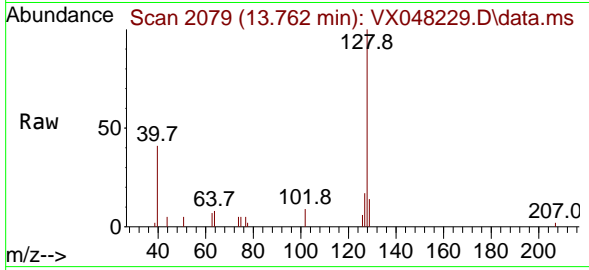
#95
 Naphthalene
 Concen: 1.230 ug/l
 RT: 13.762 min Scan# 2079
 Delta R.T. 0.006 min
 Lab File: VX048229.D
 Acq: 20 Oct 2025 10:59

Instrument :

MSVOA_X

ClientSampleId :

VSTDIC001



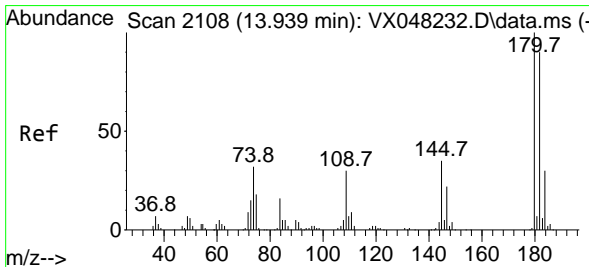
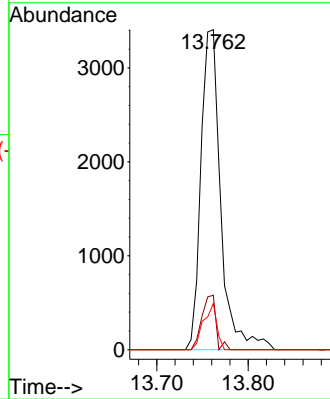
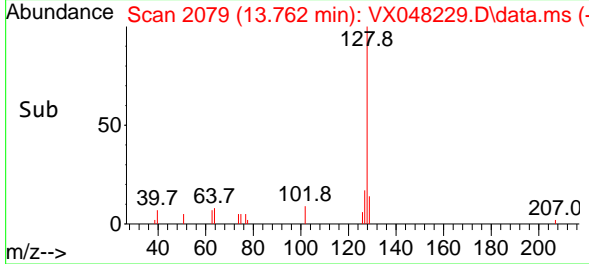
Tgt Ion:128 Resp: 5110
 Ion Ratio Lower Upper
 128 100
 127 12.1 10.2 15.4
 129 9.7 8.6 12.8

Manual Integrations

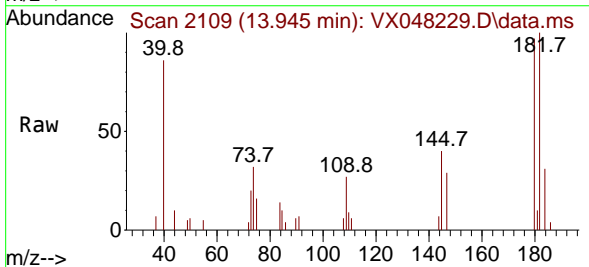
APPROVED

Reviewed By :John Carlone 10/21/2025

Supervised By :Semsettin Yesilyurt 10/21/2025



#96
 1,2,3-Trichlorobenzene
 Concen: 1.377 ug/l
 RT: 13.945 min Scan# 2109
 Delta R.T. 0.006 min
 Lab File: VX048229.D
 Acq: 20 Oct 2025 10:59



Tgt Ion:180 Resp: 2006
 Ion Ratio Lower Upper
 180 100
 182 93.5 46.6 139.7
 145 34.1 16.9 50.7

