

Data Path : Z:\pestpcbsrv\HPCHEM1\ECD\_0\Data\PO100925\  
 Data File : PO114312.D  
 Signal(s) : Signal #1: ECD1A.ch Signal #2: ECD2B.ch  
 Acq On : 09 Oct 2025 13:55  
 Operator : YP/AJ  
 Sample : I.BLK  
 Misc :  
 ALS Vial : 2 Sample Multiplier: 1

Instrument :  
 ECD\_0  
 ClientSampleId :  
 I.BLK

Integration File signal 1: autoint1.e  
 Integration File signal 2: autoint2.e  
 Quant Time: Oct 10 05:07:49 2025  
 Quant Method : Z:\pestpcbsrv\HPCHEM1\ECD\_0\methods\PO100925.M  
 Quant Title : GC EXTRACTABLES  
 QLast Update : Fri Oct 10 05:04:59 2025  
 Response via : Initial Calibration  
 Integrator: ChemStation

Volume Inj. : 2 µl  
 Signal #1 Phase : ZB-MR1 Signal #2 Phase: ZB-MR2  
 Signal #1 Info : 30Mx0.32mmx 0.50µ Signal #2 Info : 30M x 0.32mm x 0.25µm

| Compound                    | RT#1  | RT#2  | Resp#1   | Resp#2   | ng/ml  | ng/ml  |
|-----------------------------|-------|-------|----------|----------|--------|--------|
| -----                       |       |       |          |          |        |        |
| System Monitoring Compounds |       |       |          |          |        |        |
| 1) SA Tetrachlo...          | 4.356 | 3.660 | 101.2E6  | 75475125 | 18.647 | 18.858 |
| 2) SA Decachlor...          | 9.931 | 8.673 | 70041472 | 63226876 | 19.236 | 18.969 |

Target Compounds

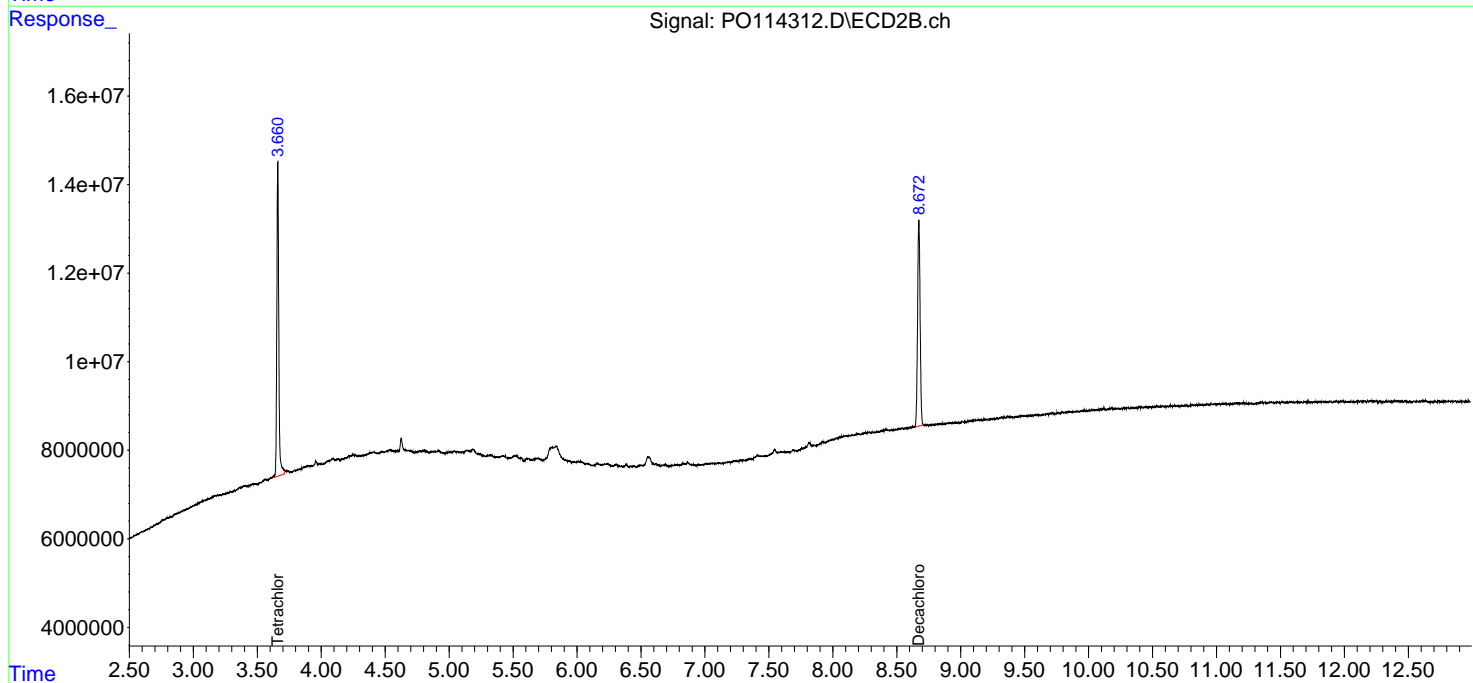
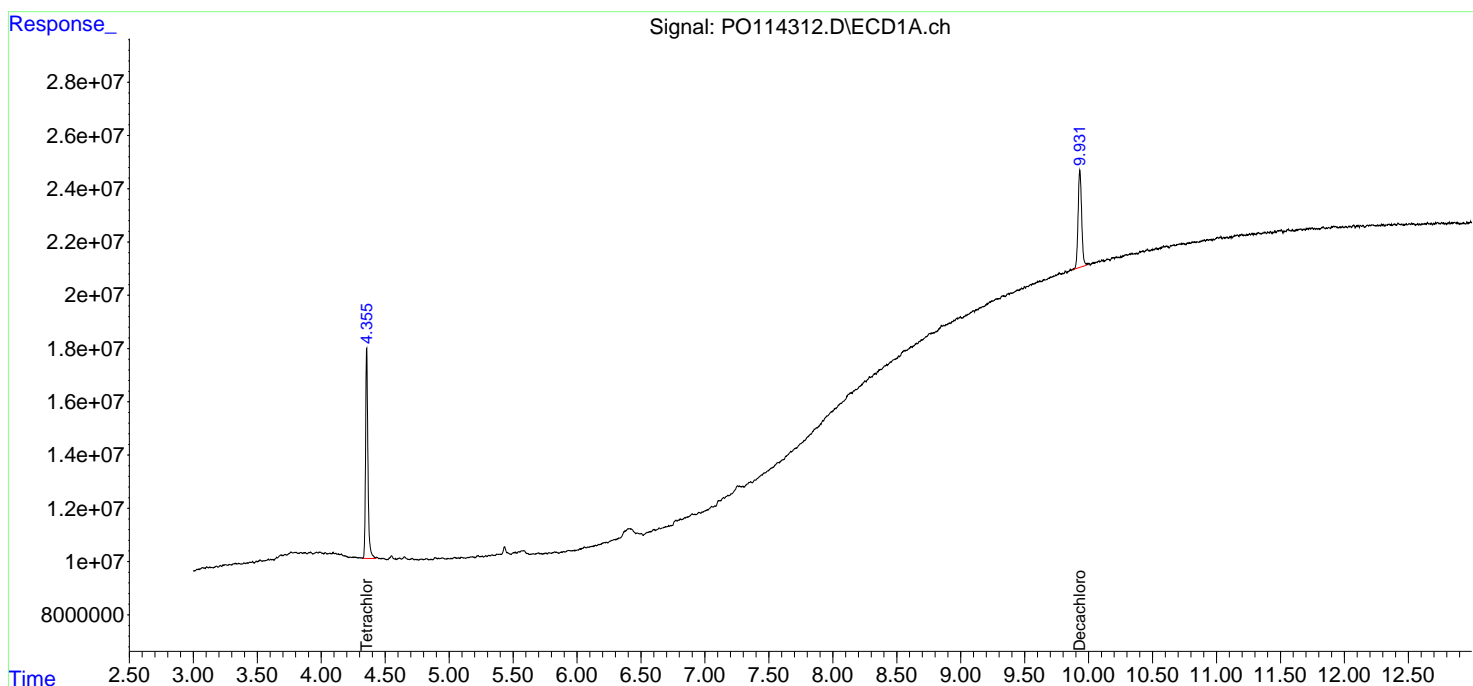
-----  
 (f)=RT Delta > 1/2 Window (#)=Amounts differ by > 25% (m)=manual int.

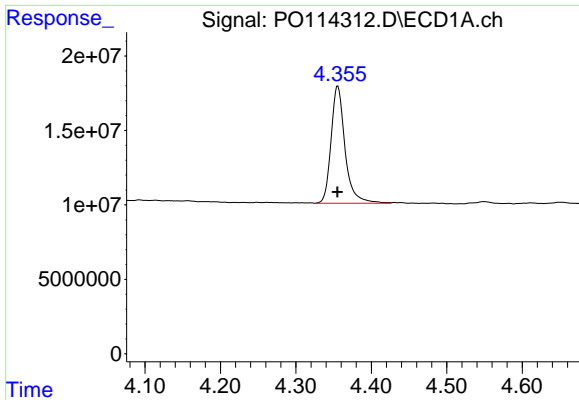
Data Path : Z:\pestpcbsrv\HPCHEM1\ECD\_0\Data\PO100925\  
 Data File : PO114312.D  
 Signal(s) : Signal #1: ECD1A.ch Signal #2: ECD2B.ch  
 Acq On : 09 Oct 2025 13:55  
 Operator : YP/AJ  
 Sample : I.BLK  
 Misc :  
 ALS Vial : 2 Sample Multiplier: 1

Instrument :  
 ECD\_O  
 ClientSampleId :  
 I.BLK

Integration File signal 1: autoint1.e  
 Integration File signal 2: autoint2.e  
 Quant Time: Oct 10 05:07:49 2025  
 Quant Method : Z:\pestpcbsrv\HPCHEM1\ECD\_0\methods\PO100925.M  
 Quant Title : GC EXTRACTABLES  
 QLast Update : Fri Oct 10 05:04:59 2025  
 Response via : Initial Calibration  
 Integrator: ChemStation

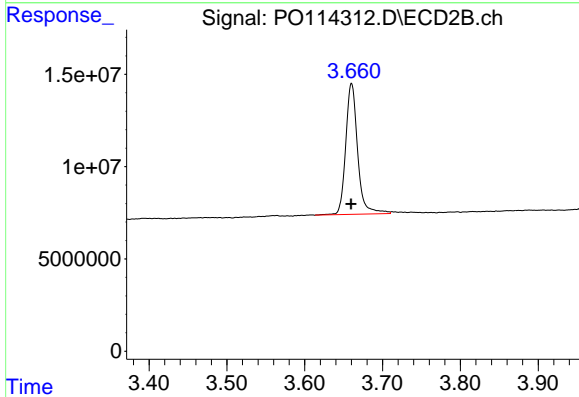
Volume Inj. : 2 µl  
 Signal #1 Phase : ZB-MR1 Signal #2 Phase: ZB-MR2  
 Signal #1 Info : 30Mx0.32mmx 0.50µ Signal #2 Info : 30M x 0.32mm x 0.25µm



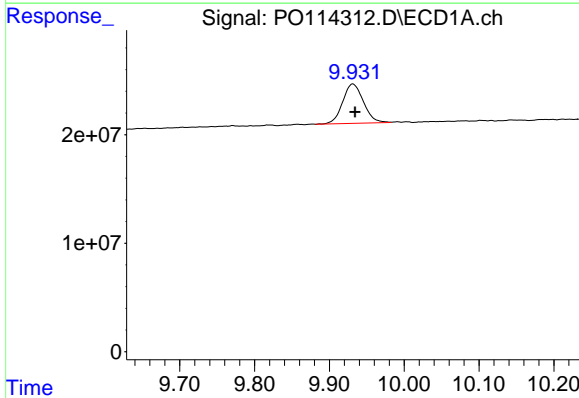


#1 Tetrachloro-m-xylene  
 R.T.: 4.356 min  
 Delta R.T.: 0.000 min  
 Response: 101234471  
 Conc: 18.65 ng/ml

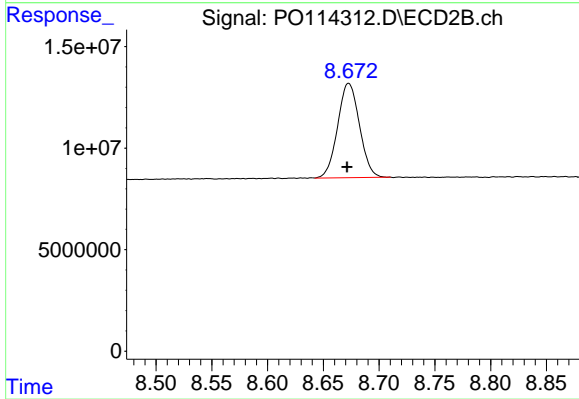
Instrument :  
 ECD\_O  
 ClientSampleId :  
 I.BLK



#1 Tetrachloro-m-xylene  
 R.T.: 3.660 min  
 Delta R.T.: 0.000 min  
 Response: 75475125  
 Conc: 18.86 ng/ml



#2 Decachlorobiphenyl  
 R.T.: 9.931 min  
 Delta R.T.: -0.003 min  
 Response: 70041472  
 Conc: 19.24 ng/ml



#2 Decachlorobiphenyl  
 R.T.: 8.673 min  
 Delta R.T.: 0.001 min  
 Response: 63226876  
 Conc: 18.97 ng/ml