

Data Path : Z:\pestpcbsrv\HPCHEM1\ECD\_Q\Data\PQ102325\  
 Data File : PQ071102.D  
 Signal(s) : Signal #1: ECD1A.ch Signal #2: ECD2B.ch  
 Acq On : 23 Oct 2025 14:35  
 Operator : YP\AJ  
 Sample : I.BLK  
 Misc :  
 ALS Vial : 2 Sample Multiplier: 1

Instrument :  
 ECD\_Q  
 ClientSampleId :  
 I.BLK

Integration File signal 1: autoint1.e  
 Integration File signal 2: autoint2.e  
 Quant Time: Oct 24 02:38:58 2025  
 Quant Method : Z:\pestpcbsrv\HPCHEM1\ECD\_Q\Method\PQ101025.M  
 Quant Title : GC EXTRACTABLES  
 QLast Update : Sat Oct 11 01:55:41 2025  
 Response via : Initial Calibration  
 Integrator: ChemStation

Volume Inj. : 2 µl  
 Signal #1 Phase : ZB-MR1 Signal #2 Phase: ZB-MR2  
 Signal #1 Info : 30Mx0.32mmx 0.50µ Signal #2 Info : 30M x 0.32mm x 0.25µm

Compound	RT#1	RT#2	Resp#1	Resp#2	ng/ml	ng/ml
-----						
System Monitoring Compounds						
1) SA Tetrachlo...	3.399	2.777	89668540	96897464	20.612	19.074
2) SA Decachlor...	8.498	7.532	67363051	115.5E6	23.197	22.880

Target Compounds

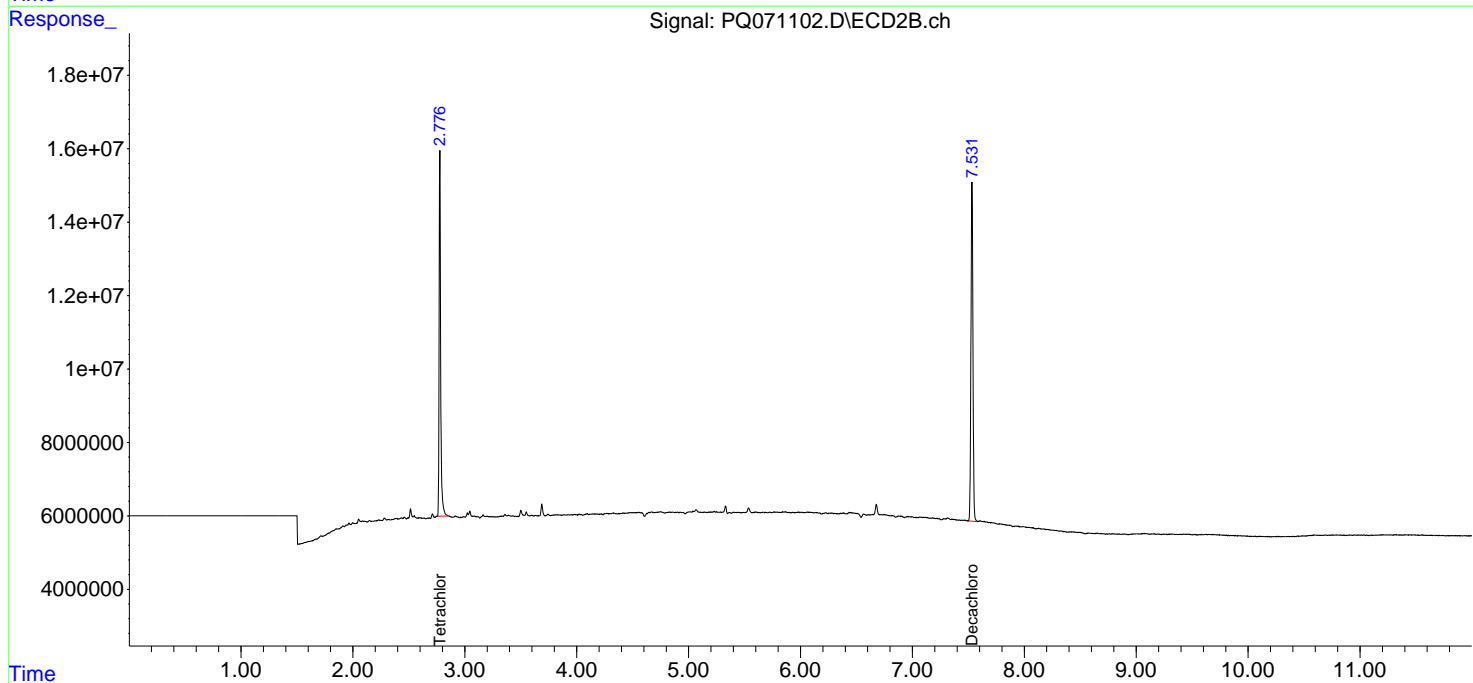
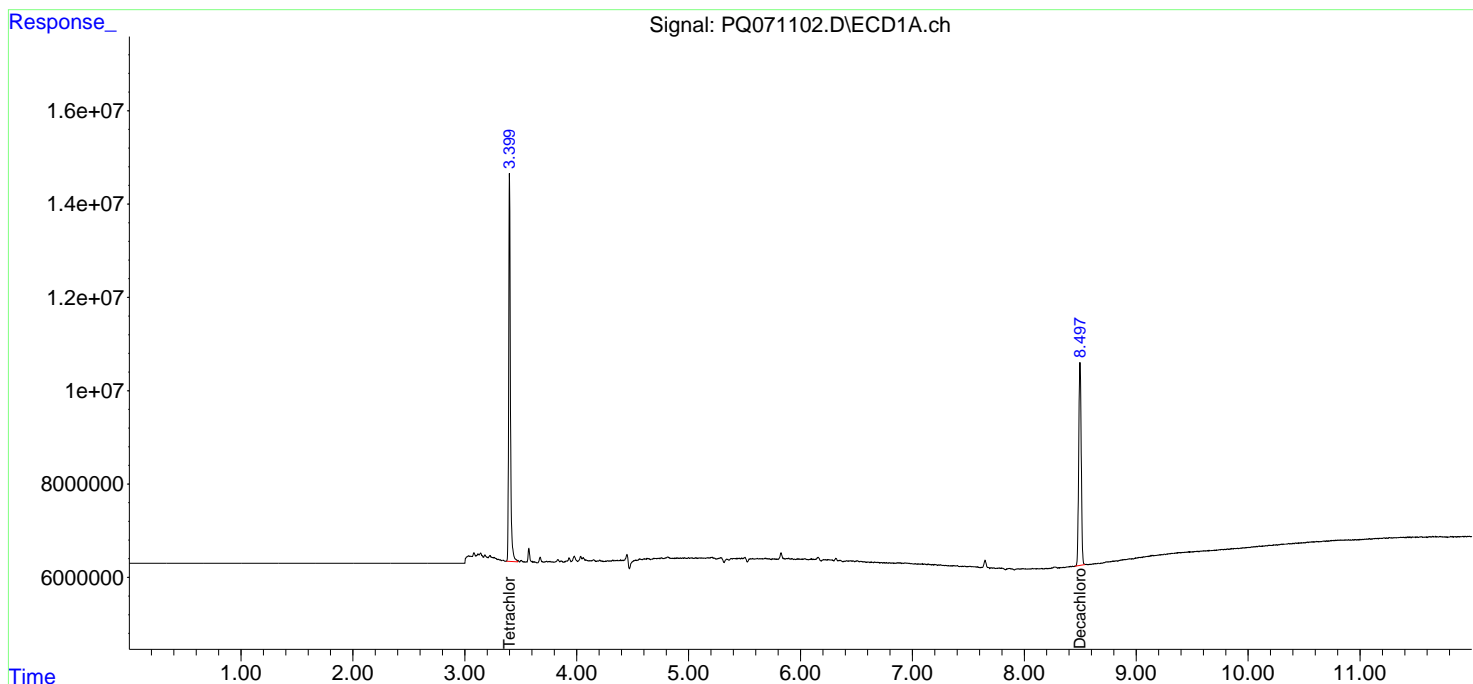
(f)=RT Delta > 1/2 Window (#)=Amounts differ by > 25% (m)=manual int.

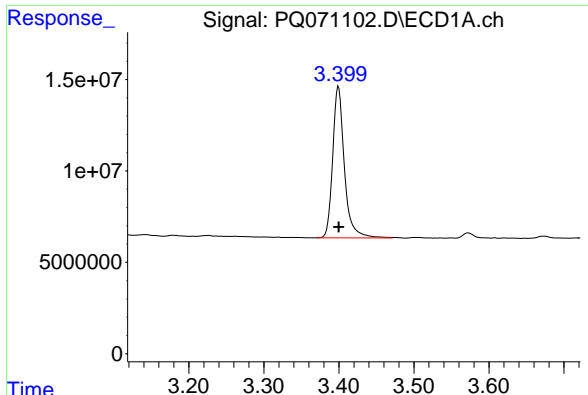
Data Path : Z:\pestpcbsrv\HPCHEM1\ECD\_Q\Data\PQ102325\  
 Data File : PQ071102.D  
 Signal(s) : Signal #1: ECD1A.ch Signal #2: ECD2B.ch  
 Acq On : 23 Oct 2025 14:35  
 Operator : YP\AJ  
 Sample : I.BLK  
 Misc :  
 ALS Vial : 2 Sample Multiplier: 1

Instrument :  
 ECD\_Q  
 ClientSampleId :  
 I.BLK

Integration File signal 1: autoint1.e  
 Integration File signal 2: autoint2.e  
 Quant Time: Oct 24 02:38:58 2025  
 Quant Method : Z:\pestpcbsrv\HPCHEM1\ECD\_Q\Method\PQ101025.M  
 Quant Title : GC EXTRACTABLES  
 QLast Update : Sat Oct 11 01:55:41 2025  
 Response via : Initial Calibration  
 Integrator: ChemStation

Volume Inj. : 2 µl  
 Signal #1 Phase : ZB-MR1 Signal #2 Phase: ZB-MR2  
 Signal #1 Info : 30Mx0.32mmx 0.50µ Signal #2 Info : 30M x 0.32mm x 0.25µm

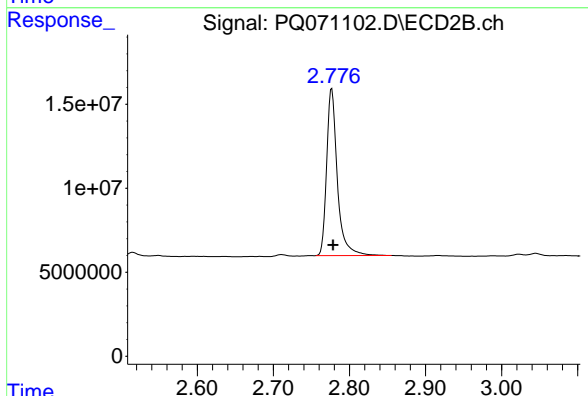




#1 Tetrachloro-m-xylene

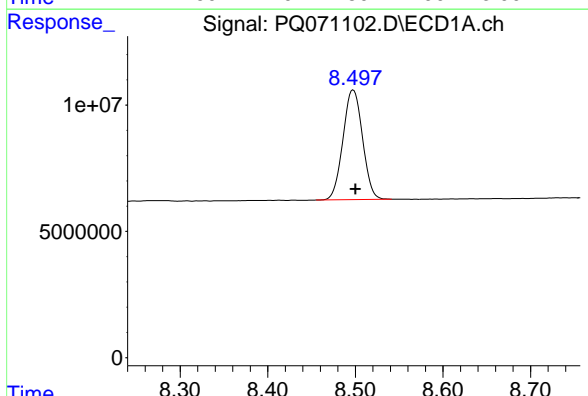
R.T.: 3.399 min  
 Delta R.T.: 0.000 min  
 Response: 89668540  
 Conc: 20.61 ng/ml

Instrument :  
 ECD\_Q  
 ClientSampleId :  
 I.BLK



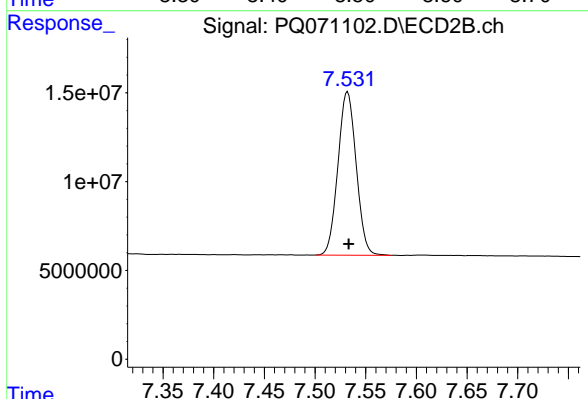
#1 Tetrachloro-m-xylene

R.T.: 2.777 min  
 Delta R.T.: -0.002 min  
 Response: 96897464  
 Conc: 19.07 ng/ml



#2 Decachlorobiphenyl

R.T.: 8.498 min  
 Delta R.T.: -0.002 min  
 Response: 67363051  
 Conc: 23.20 ng/ml



#2 Decachlorobiphenyl

R.T.: 7.532 min  
 Delta R.T.: 0.000 min  
 Response: 115533387  
 Conc: 22.88 ng/ml