

Data Path : Z:\pestpcbsrv\HPCHEM1\ECD\_P\Data\PP102125\  
 Data File : PP075915.D  
 Signal(s) : Signal #1: ECD1A.ch Signal #2: ECD2B.ch  
 Acq On : 21 Oct 2025 17:01  
 Operator : YP\AJ  
 Sample : AR1268ICC050  
 Misc :  
 ALS Vial : 30 Sample Multiplier: 1

Instrument :  
 ECD\_P  
 ClientSampleId :  
 AR1268ICC050

Integration File signal 1: autoint1.e  
 Integration File signal 2: autoint2.e  
 Quant Time: Oct 21 18:15:07 2025  
 Quant Method : Z:\pestpcbsrv\HPCHEM1\ECD\_P\methods\PP102125.M  
 Quant Title : GC EXTRACTABLES  
 QLast Update : Tue Oct 21 17:59:29 2025  
 Response via : Initial Calibration  
 Integrator: ChemStation

Volume Inj. : 2 µl  
 Signal #1 Phase : ZB-MR1 Signal #2 Phase: ZB-MR2  
 Signal #1 Info : 30Mx0.32mmx 0.50µ Signal #2 Info : 30M x 0.32mm x 0.25µm

Compound	RT#1	RT#2	Resp#1	Resp#2	ng/ml	ng/ml
-----						
System Monitoring Compounds						
1) SA Tetrachlo...	4.646	3.785	8297245	34278784	5.239	4.694
2) SA Decachlor...	10.424	8.786	11780168	79254993	5.451	4.805
Target Compounds						
41) L9 AR-1268-1	8.878	7.671	11762673	90866583	56.952	50.184
42) L9 AR-1268-2	8.973	7.736	10571240	82258397	56.152	47.408
43) L9 AR-1268-3	9.212	7.944	8270442	67275006	53.294	49.210
44) L9 AR-1268-4	9.641	8.228	4718687	23283603	59.998	44.997 #
45) L9 AR-1268-5	10.071	8.525	27065230	169.1E6	56.340	44.825
-----						

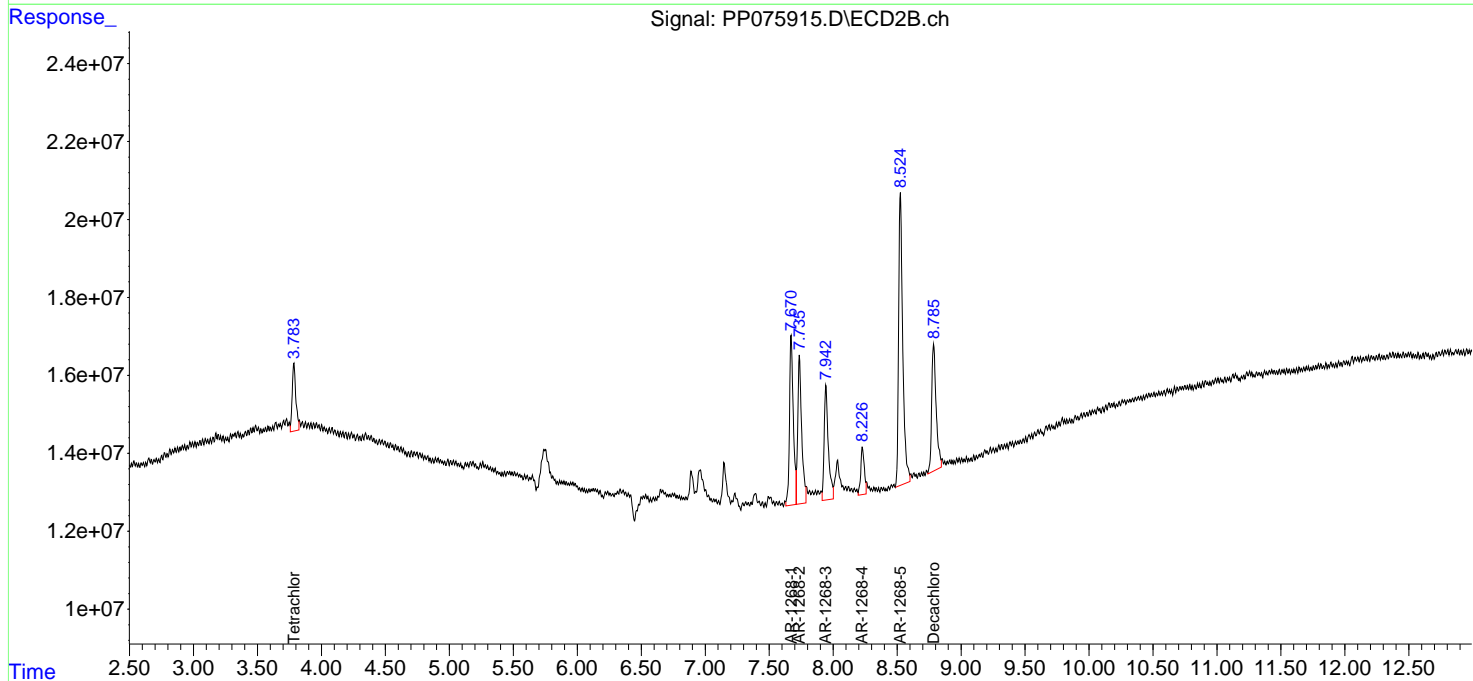
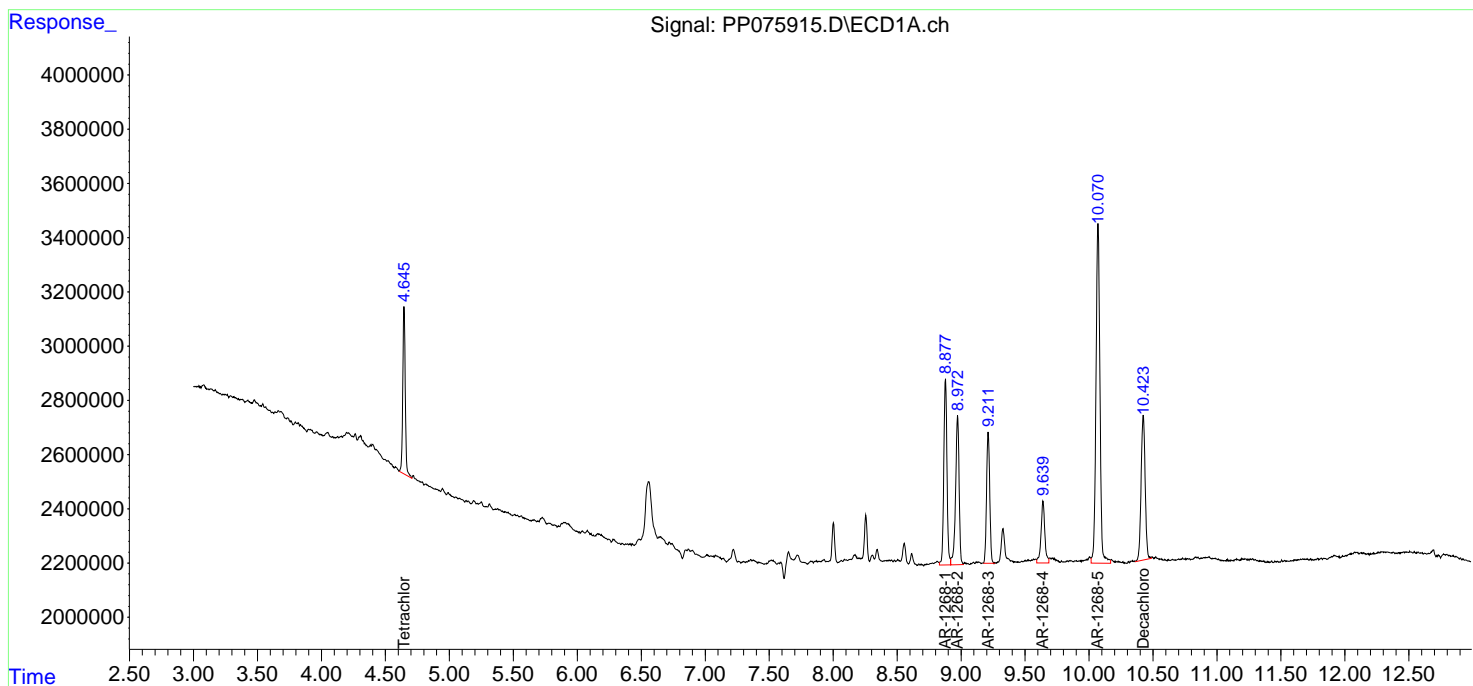
(f)=RT Delta > 1/2 Window (#)=Amounts differ by > 25% (m)=manual int.

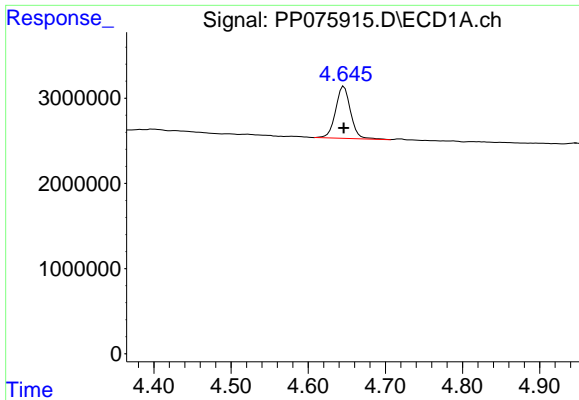
Data Path : Z:\pestpcbsrv\HPCHEM1\ECD\_P\Data\PP102125\  
 Data File : PP075915.D  
 Signal(s) : Signal #1: ECD1A.ch Signal #2: ECD2B.ch  
 Acq On : 21 Oct 2025 17:01  
 Operator : YP\AJ  
 Sample : AR1268ICC050  
 Misc :  
 ALS Vial : 30 Sample Multiplier: 1

Instrument :  
 ECD\_P  
 ClientSampleId :  
 AR1268ICC050

Integration File signal 1: autoint1.e  
 Integration File signal 2: autoint2.e  
 Quant Time: Oct 21 18:15:07 2025  
 Quant Method : Z:\pestpcbsrv\HPCHEM1\ECD\_P\methods\PP102125.M  
 Quant Title : GC EXTRACTABLES  
 QLast Update : Tue Oct 21 17:59:29 2025  
 Response via : Initial Calibration  
 Integrator: ChemStation

Volume Inj. : 2 µl  
 Signal #1 Phase : ZB-MR1 Signal #2 Phase: ZB-MR2  
 Signal #1 Info : 30Mx0.32mmx 0.50µ Signal #2 Info : 30M x 0.32mm x 0.25µm

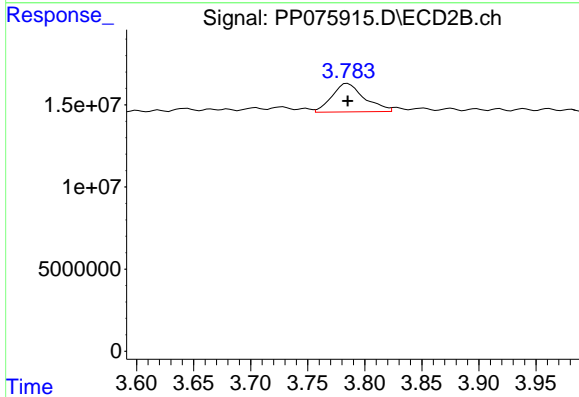




#1 Tetrachloro-m-xylene

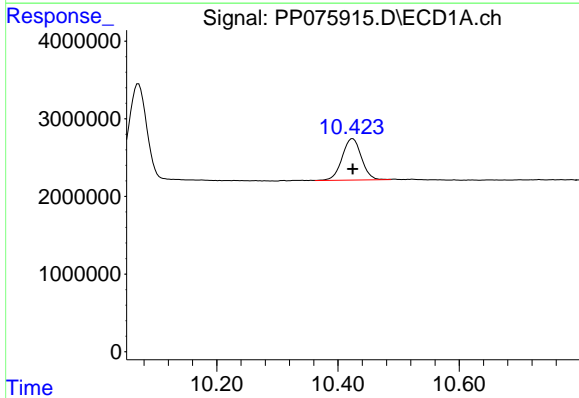
R.T.: 4.646 min  
 Delta R.T.: 0.000 min  
 Response: 8297245  
 Conc: 5.24 ng/ml

Instrument :  
 ECD\_P  
 ClientSampleId :  
 AR1268IC050



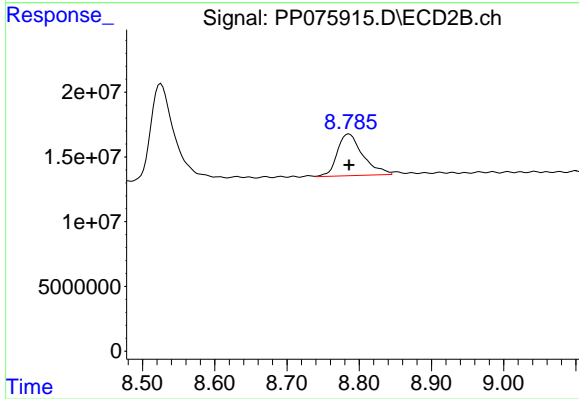
#1 Tetrachloro-m-xylene

R.T.: 3.785 min  
 Delta R.T.: 0.000 min  
 Response: 34278784  
 Conc: 4.69 ng/ml



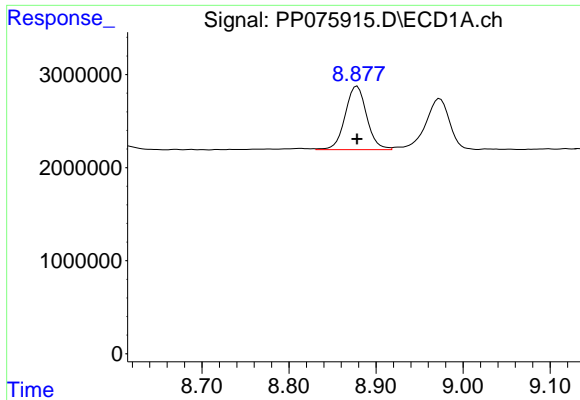
#2 Decachlorobiphenyl

R.T.: 10.424 min  
 Delta R.T.: 0.000 min  
 Response: 11780168  
 Conc: 5.45 ng/ml



#2 Decachlorobiphenyl

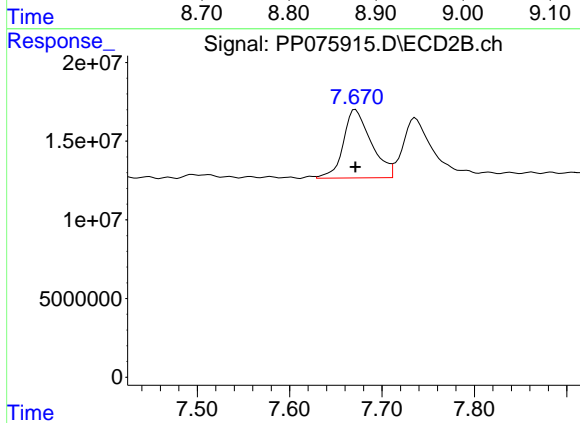
R.T.: 8.786 min  
 Delta R.T.: 0.000 min  
 Response: 79254993  
 Conc: 4.81 ng/ml



#41 AR-1268-1

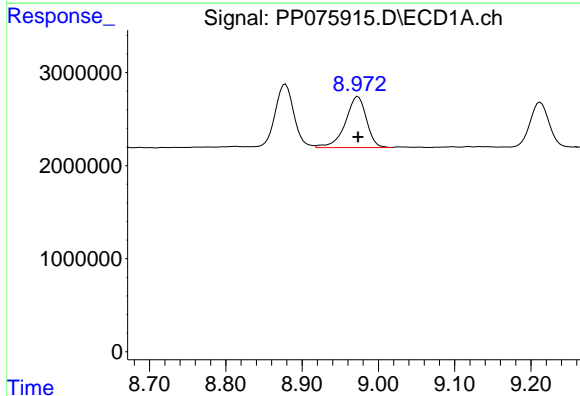
R.T.: 8.878 min  
 Delta R.T.: 0.000 min  
 Response: 11762673  
 Conc: 56.95 ng/ml

Instrument :  
 ECD\_P  
 ClientSampleId :  
 AR1268IC050



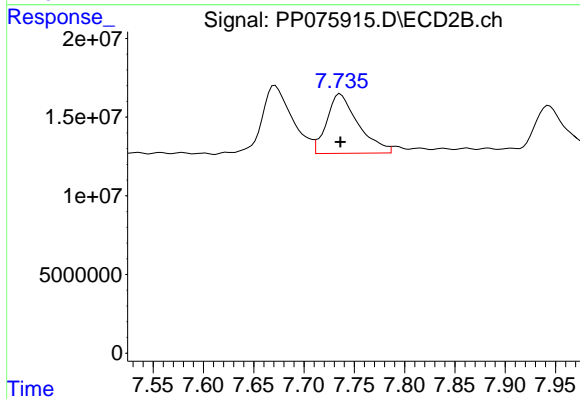
#41 AR-1268-1

R.T.: 7.671 min  
 Delta R.T.: 0.000 min  
 Response: 90866583  
 Conc: 50.18 ng/ml



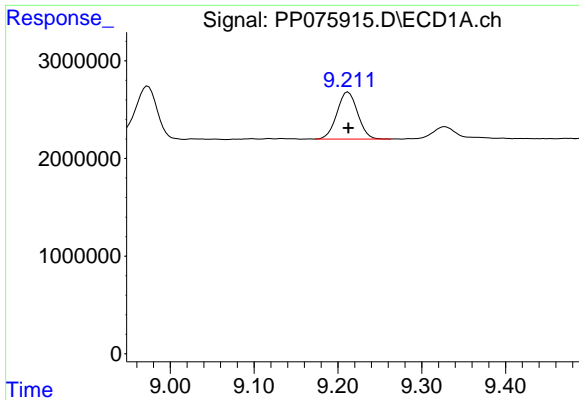
#42 AR-1268-2

R.T.: 8.973 min  
 Delta R.T.: 0.000 min  
 Response: 10571240  
 Conc: 56.15 ng/ml



#42 AR-1268-2

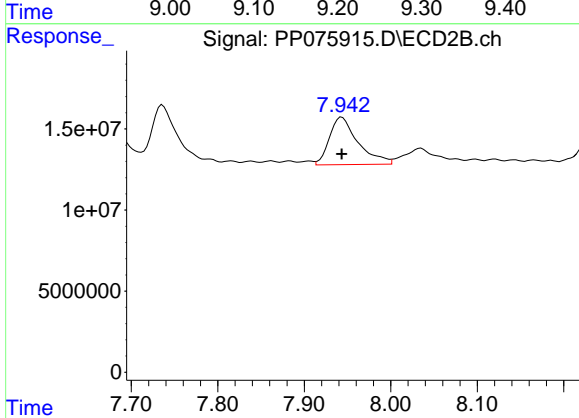
R.T.: 7.736 min  
 Delta R.T.: 0.000 min  
 Response: 82258397  
 Conc: 47.41 ng/ml



#43 AR-1268-3

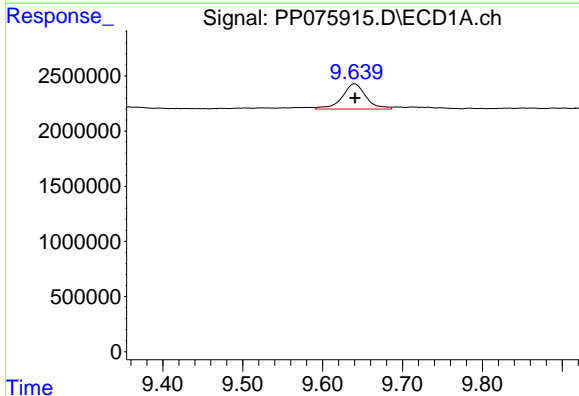
R.T.: 9.212 min  
 Delta R.T.: 0.000 min  
 Response: 8270442  
 Conc: 53.29 ng/ml

Instrument :  
 ECD\_P  
 ClientSampleId :  
 AR1268ICC050



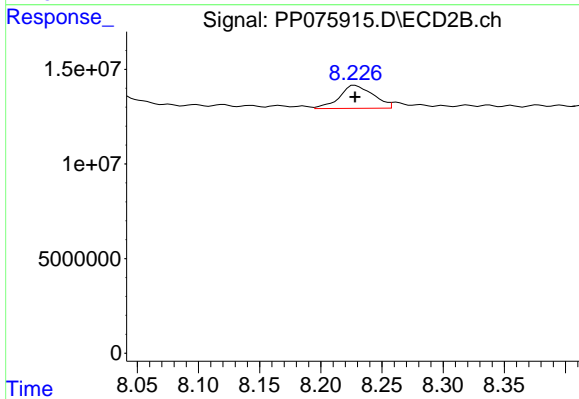
#43 AR-1268-3

R.T.: 7.944 min  
 Delta R.T.: 0.000 min  
 Response: 67275006  
 Conc: 49.21 ng/ml



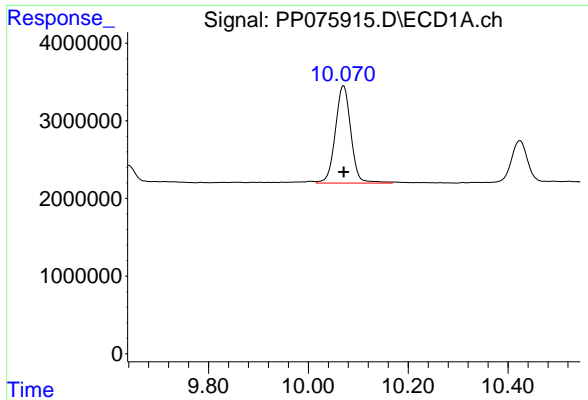
#44 AR-1268-4

R.T.: 9.641 min  
 Delta R.T.: 0.000 min  
 Response: 4718687  
 Conc: 60.00 ng/ml



#44 AR-1268-4

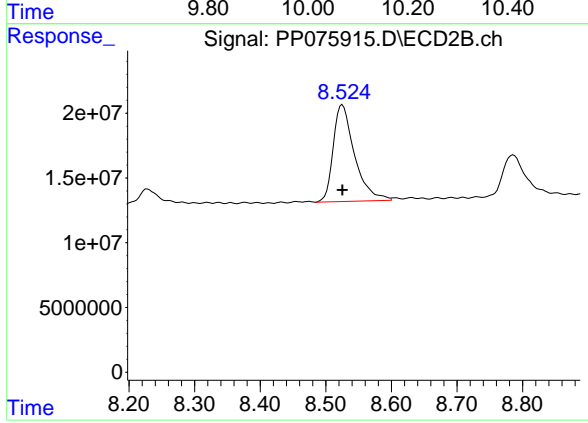
R.T.: 8.228 min  
 Delta R.T.: 0.000 min  
 Response: 23283603  
 Conc: 45.00 ng/ml



#45 AR-1268-5

R.T.: 10.071 min  
Delta R.T.: 0.000 min  
Response: 27065230  
Conc: 56.34 ng/ml

Instrument :  
ECD\_P  
ClientSampleId :  
AR1268ICC050



#45 AR-1268-5

R.T.: 8.525 min  
Delta R.T.: 0.000 min  
Response: 169066563  
Conc: 44.82 ng/ml