

Data Path : Z:\pestpcbsrv\HPCHEM1\ECD\_P\Data\PP102125\  
 Data File : PP075920.D  
 Signal(s) : Signal #1: ECD1A.ch Signal #2: ECD2B.ch  
 Acq On : 22 Oct 2025 09:07  
 Operator : YP\AJ  
 Sample : AR1268ICV500  
 Misc :  
 ALS Vial : 35 Sample Multiplier: 1

**Instrument :**  
 ECD\_P  
**ClientSampleId :**  
 ICVPP102125AR1268

Integration File signal 1: autoint1.e  
 Integration File signal 2: autoint2.e  
 Quant Time: Oct 24 15:40:49 2025  
 Quant Method : Z:\pestpcbsrv\HPCHEM1\ECD\_P\methods\PP102125.M  
 Quant Title : GC EXTRACTABLES  
 QLast Update : Fri Oct 24 15:38:49 2025  
 Response via : Initial Calibration  
 Integrator: ChemStation

Volume Inj. : 2 µl  
 Signal #1 Phase : ZB-MR1 Signal #2 Phase: ZB-MR2  
 Signal #1 Info : 30Mx0.32mmx 0.50µ Signal #2 Info : 30M x 0.32mm x 0.25µm

Compound	RT#1	RT#2	Resp#1	Resp#2	ng/ml	ng/ml
-----						
System Monitoring Compounds						
1) SA Tetrachlo...	4.648	3.782	80645176	382.7E6	50.921	52.402
2) SA Decachlor...	10.430	8.784	112.8E6	913.8E6	52.199	55.404
Target Compounds						
41) L9 AR-1268-1	8.881	7.671	106.5E6	989.5E6	515.825	546.466
42) L9 AR-1268-2	8.976	7.736	98184801	960.8E6	521.533	553.714
43) L9 AR-1268-3	9.216	7.942	81566200	749.4E6	525.609	548.157
44) L9 AR-1268-4	9.645	8.228	39672536	280.8E6	504.438	542.576
45) L9 AR-1268-5	10.076	8.525	246.0E6	2111.9E6	512.030	559.930
-----						

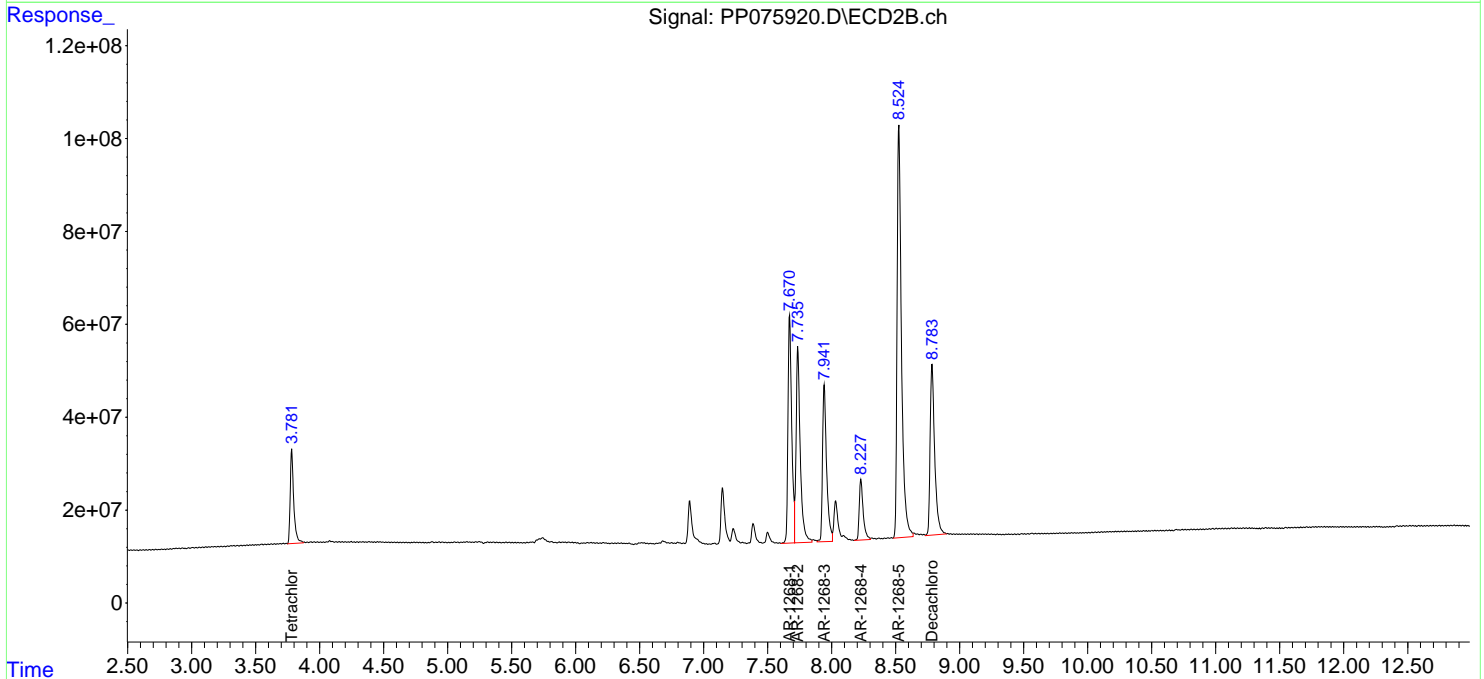
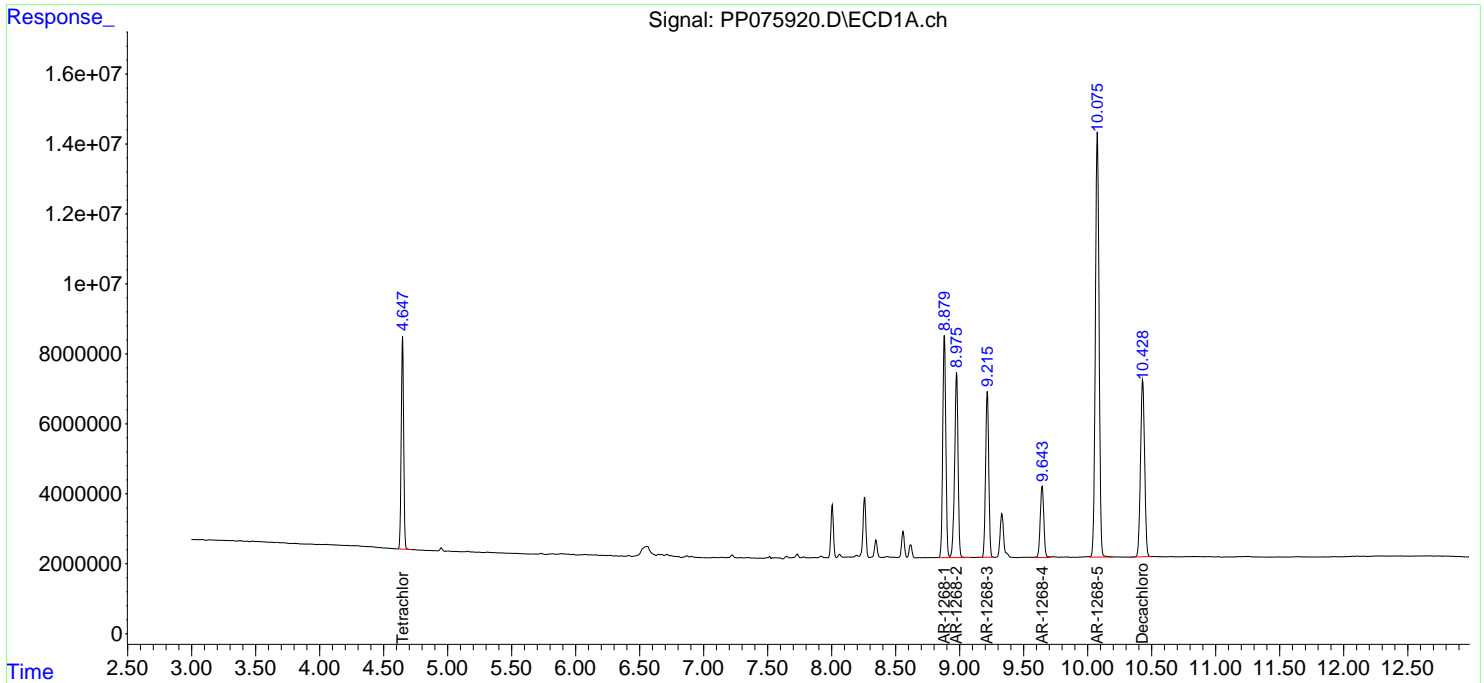
(f)=RT Delta > 1/2 Window (#)=Amounts differ by > 25% (m)=manual int.

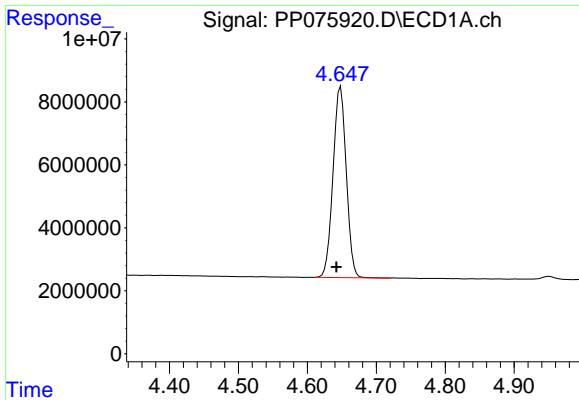
Data Path : Z:\pestpcbsrv\HPCHEM1\ECD\_P\Data\PP102125\  
 Data File : PP075920.D  
 Signal(s) : Signal #1: ECD1A.ch Signal #2: ECD2B.ch  
 Acq On : 22 Oct 2025 09:07  
 Operator : YP\AJ  
 Sample : AR1268ICV500  
 Misc :  
 ALS Vial : 35 Sample Multiplier: 1

Instrument :  
 ECD\_P  
 ClientSampleId :  
 ICVPP102125AR1268

Integration File signal 1: autoint1.e  
 Integration File signal 2: autoint2.e  
 Quant Time: Oct 24 15:40:49 2025  
 Quant Method : Z:\pestpcbsrv\HPCHEM1\ECD\_P\methods\PP102125.M  
 Quant Title : GC EXTRACTABLES  
 QLast Update : Fri Oct 24 15:38:49 2025  
 Response via : Initial Calibration  
 Integrator: ChemStation

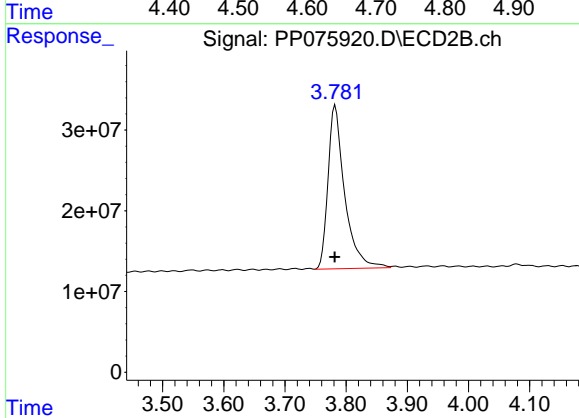
Volume Inj. : 2 µl  
 Signal #1 Phase : ZB-MR1 Signal #2 Phase: ZB-MR2  
 Signal #1 Info : 30Mx0.32mmx 0.50µ Signal #2 Info : 30M x 0.32mm x 0.25µm



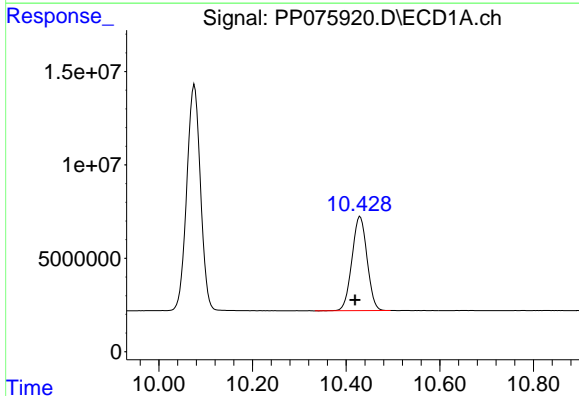


#1 Tetrachloro-m-xylene  
 R.T.: 4.648 min  
 Delta R.T.: 0.006 min  
 Response: 80645176  
 Conc: 50.92 ng/ml

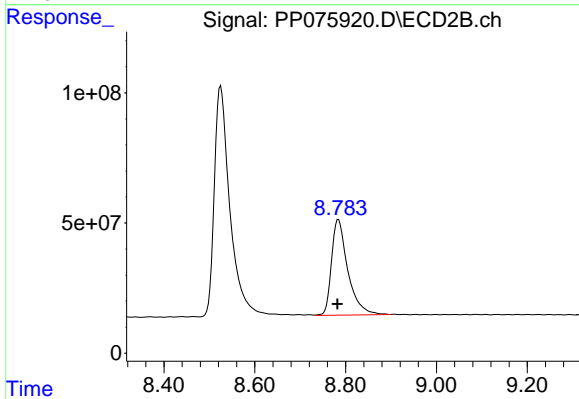
Instrument :  
 ECD\_P  
 ClientSampleId :  
 ICVPP102125AR1268



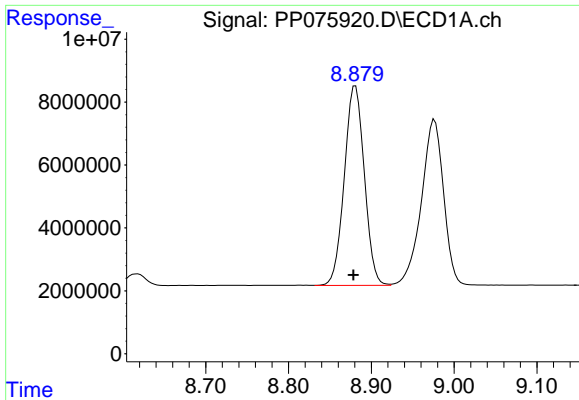
#1 Tetrachloro-m-xylene  
 R.T.: 3.782 min  
 Delta R.T.: 0.001 min  
 Response: 382676778  
 Conc: 52.40 ng/ml



#2 Decachlorobiphenyl  
 R.T.: 10.430 min  
 Delta R.T.: 0.011 min  
 Response: 112806643  
 Conc: 52.20 ng/ml



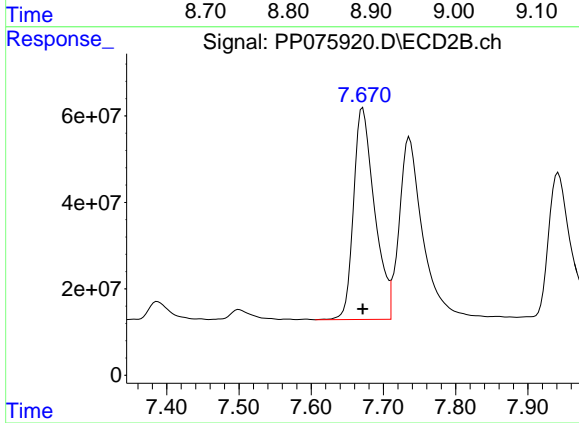
#2 Decachlorobiphenyl  
 R.T.: 8.784 min  
 Delta R.T.: 0.002 min  
 Response: 913768766  
 Conc: 55.40 ng/ml



#41 AR-1268-1

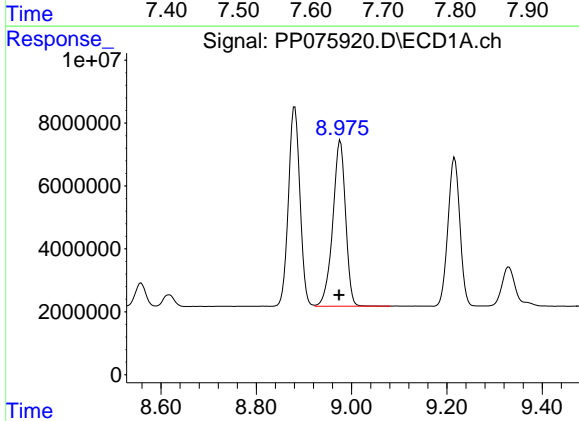
R.T.: 8.881 min  
 Delta R.T.: 0.002 min  
 Response: 106536710  
 Conc: 515.83 ng/ml

Instrument :  
 ECD\_P  
 ClientSampleId :  
 ICVPP102125AR1268



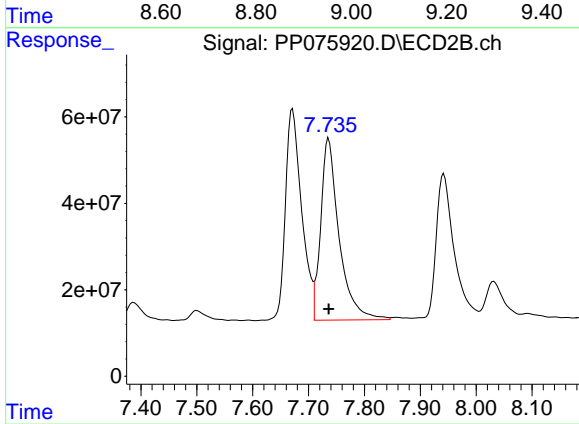
#41 AR-1268-1

R.T.: 7.671 min  
 Delta R.T.: 0.000 min  
 Response: 989459670  
 Conc: 546.47 ng/ml



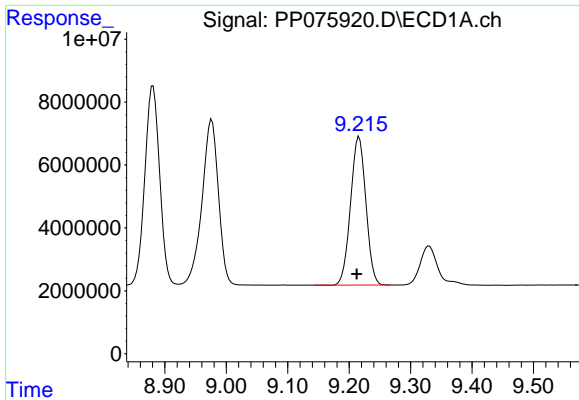
#42 AR-1268-2

R.T.: 8.976 min  
 Delta R.T.: 0.003 min  
 Response: 98184801  
 Conc: 521.53 ng/ml



#42 AR-1268-2

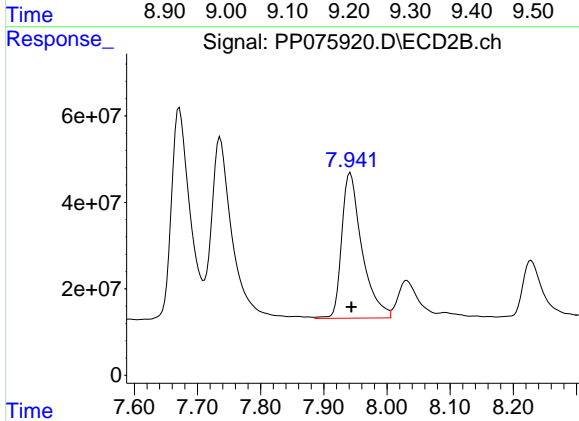
R.T.: 7.736 min  
 Delta R.T.: 0.000 min  
 Response: 960757181  
 Conc: 553.71 ng/ml



#43 AR-1268-3

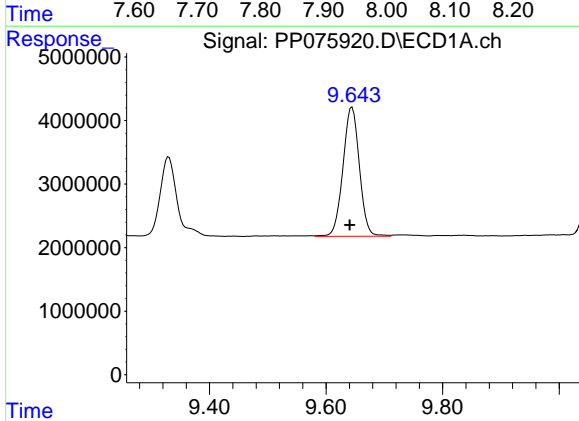
R.T.: 9.216 min  
 Delta R.T.: 0.004 min  
 Response: 81566200  
 Conc: 525.61 ng/ml

Instrument :  
 ECD\_P  
 ClientSampleId :  
 ICVPP102125AR1268



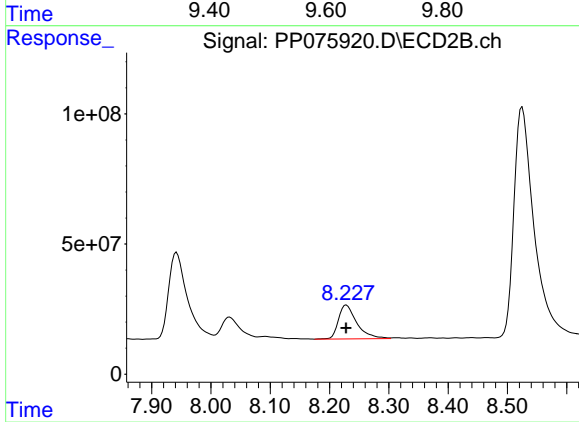
#43 AR-1268-3

R.T.: 7.942 min  
 Delta R.T.: -0.002 min  
 Response: 749381557  
 Conc: 548.16 ng/ml



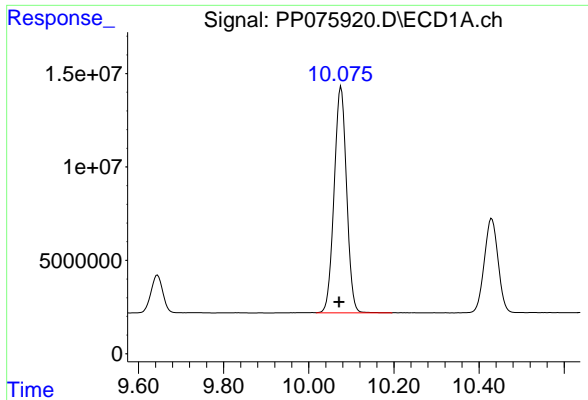
#44 AR-1268-4

R.T.: 9.645 min  
 Delta R.T.: 0.004 min  
 Response: 39672536  
 Conc: 504.44 ng/ml



#44 AR-1268-4

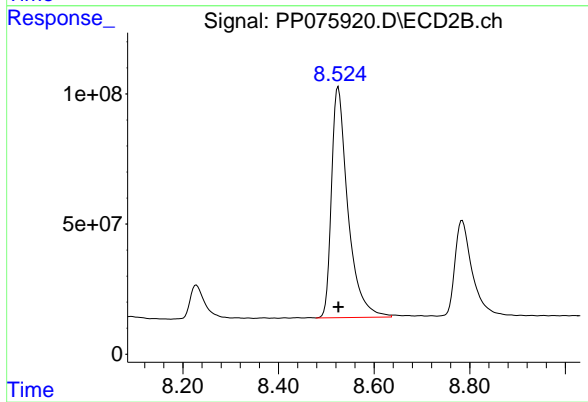
R.T.: 8.228 min  
 Delta R.T.: 0.000 min  
 Response: 280752507  
 Conc: 542.58 ng/ml



#45 AR-1268-5

R.T.: 10.076 min  
Delta R.T.: 0.005 min  
Response: 245972462  
Conc: 512.03 ng/ml

Instrument :  
ECD\_P  
ClientSampleId :  
ICVPP102125AR1268



#45 AR-1268-5

R.T.: 8.525 min  
Delta R.T.: 0.000 min  
Response: 2111903828  
Conc: 559.93 ng/ml