

Data Path : Z:\pestpcbsrv\HPCHEM1\ECD\_Q\Data\PQ101025\  
 Data File : PQ071000.D  
 Signal(s) : Signal #1: ECD1A.ch Signal #2: ECD2B.ch  
 Acq On : 10 Oct 2025 16:43  
 Operator : YP\AJ  
 Sample : AR1268ICC050  
 Misc :  
 ALS Vial : 30 Sample Multiplier: 1

Instrument :  
 ECD\_Q  
 ClientSampleId :  
 AR1268ICC050

Integration File signal 1: autoint1.e  
 Integration File signal 2: autoint2.e  
 Quant Time: Oct 10 17:16:32 2025  
 Quant Method : Z:\pestpcbsrv\HPCHEM1\ECD\_Q\Method\PQ101025.M  
 Quant Title : GC EXTRACTABLES  
 QLast Update : Fri Oct 10 17:16:19 2025  
 Response via : Initial Calibration  
 Integrator: ChemStation

Volume Inj. : 2 µl  
 Signal #1 Phase : ZB-MR1 Signal #2 Phase: ZB-MR2  
 Signal #1 Info : 30Mx0.32mmx 0.50µ Signal #2 Info : 30M x 0.32mm x 0.25µm

Compound	RT#1	RT#2	Resp#1	Resp#2	ng/ml	ng/ml
-----						
System Monitoring Compounds						
1) SA Tetrachlo...	3.400	2.778	24662420	28347182	5.050	4.966
2) SA Decachlor...	8.497	7.533	31115212	59480232	5.165	5.383
Target Compounds						
41) L9 AR-1268-1	7.418	6.500	30187398	51549310	51.812	52.901
42) L9 AR-1268-2	7.495	6.563	26994207	46812925	50.847	52.089
43) L9 AR-1268-3	7.676	6.763	22122982	41071128	51.057	52.539
44) L9 AR-1268-4	7.989	7.050	9507758	17547775	50.662	50.933
45) L9 AR-1268-5	8.271	7.317	65947884	122.2E6	50.280	50.497
-----						

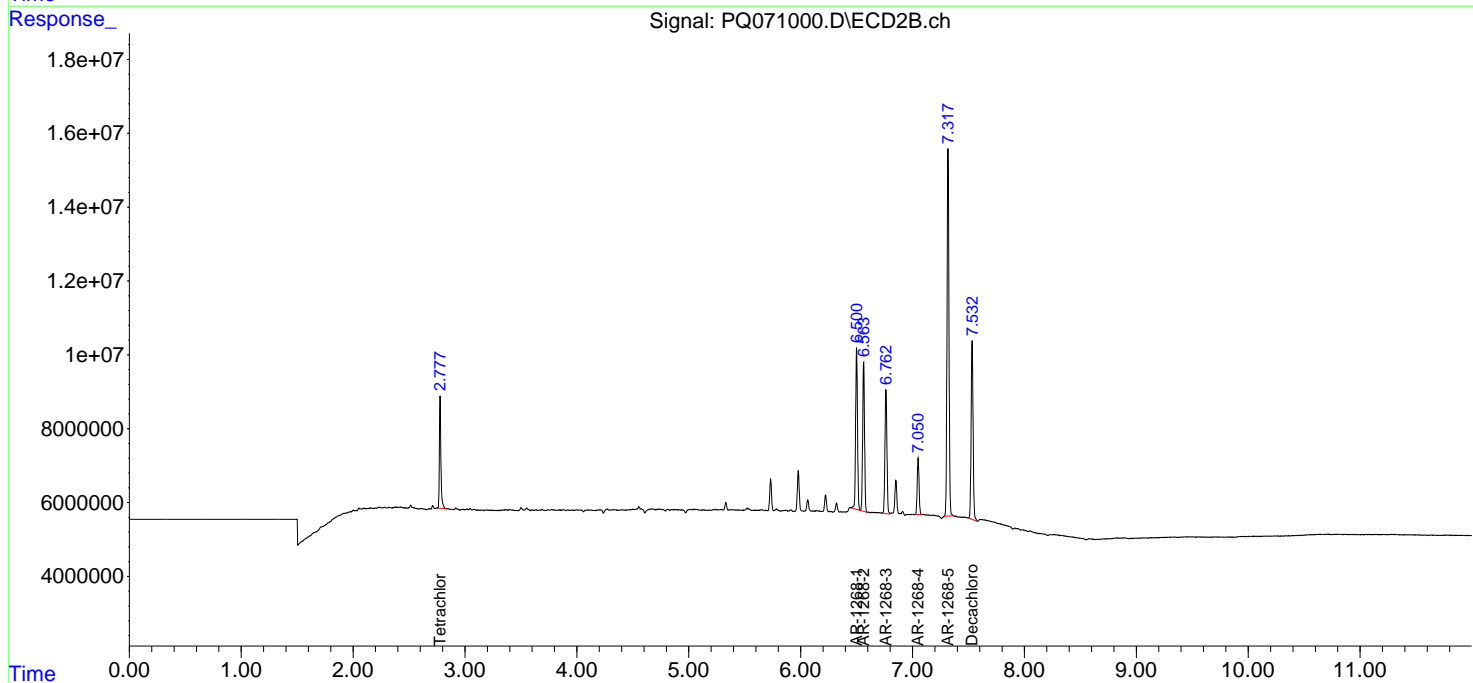
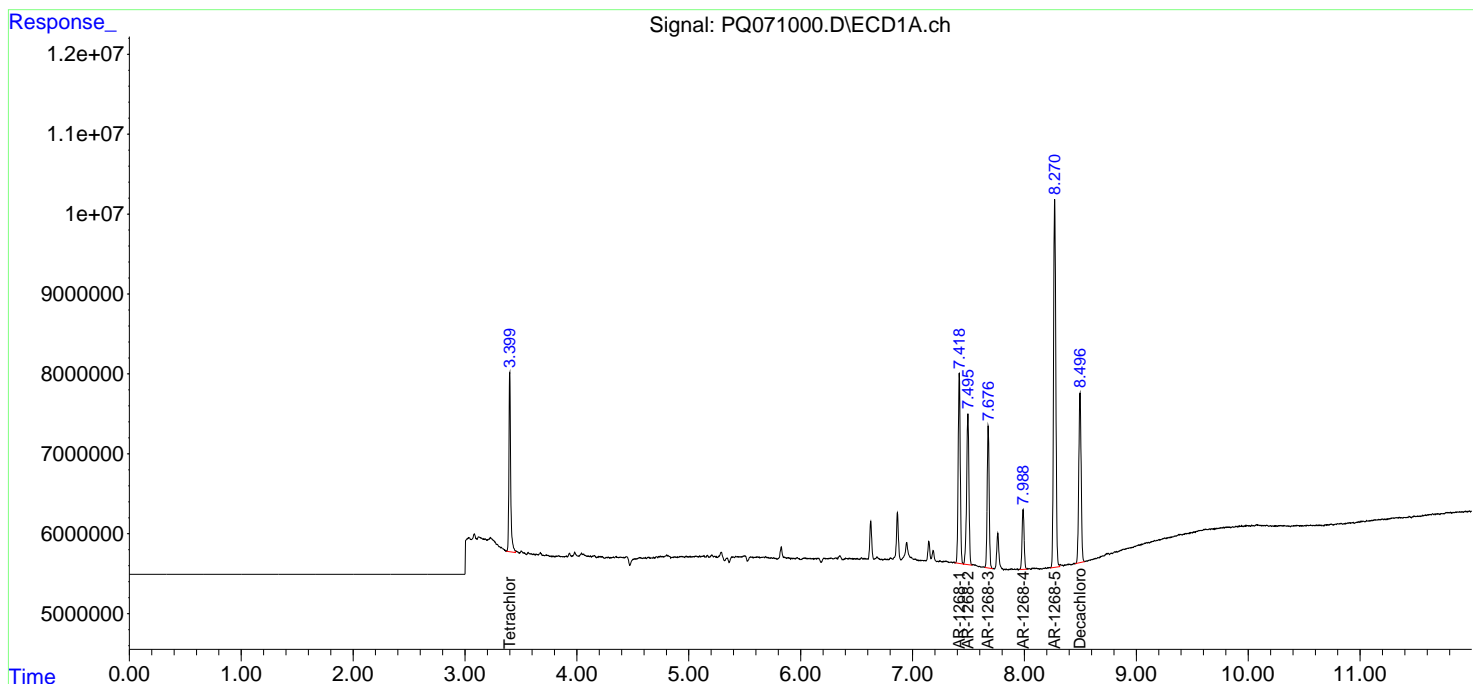
(f)=RT Delta > 1/2 Window (#)=Amounts differ by > 25% (m)=manual int.

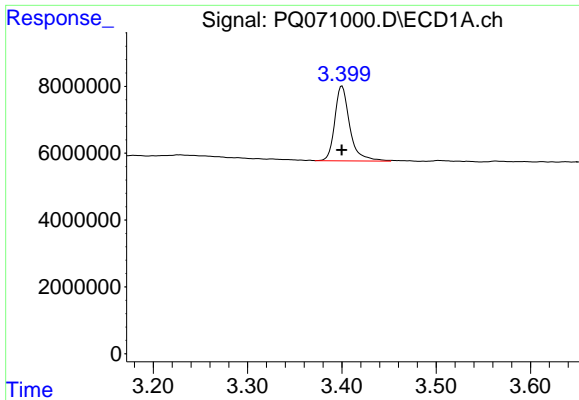
Data Path : Z:\pestpcbsrv\HPCHEM1\ECD\_Q\Data\PQ101025\  
 Data File : PQ071000.D  
 Signal(s) : Signal #1: ECD1A.ch Signal #2: ECD2B.ch  
 Acq On : 10 Oct 2025 16:43  
 Operator : YP\AJ  
 Sample : AR1268ICC050  
 Misc :  
 ALS Vial : 30 Sample Multiplier: 1

Instrument :  
 ECD\_Q  
 ClientSampleId :  
 AR1268ICC050

Integration File signal 1: autoint1.e  
 Integration File signal 2: autoint2.e  
 Quant Time: Oct 10 17:16:32 2025  
 Quant Method : Z:\pestpcbsrv\HPCHEM1\ECD\_Q\Method\PQ101025.M  
 Quant Title : GC EXTRACTABLES  
 QLast Update : Fri Oct 10 17:16:19 2025  
 Response via : Initial Calibration  
 Integrator: ChemStation

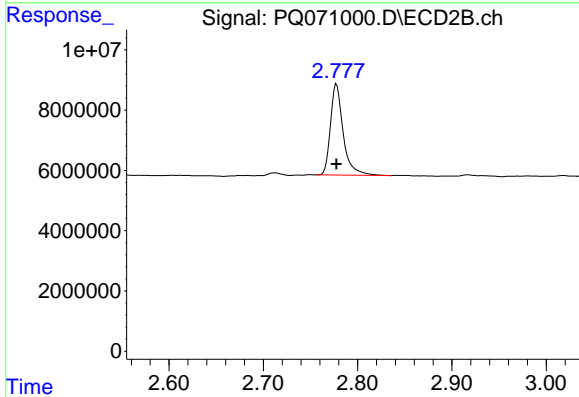
Volume Inj. : 2 µl  
 Signal #1 Phase : ZB-MR1 Signal #2 Phase: ZB-MR2  
 Signal #1 Info : 30Mx0.32mmx 0.50µ Signal #2 Info : 30M x 0.32mm x 0.25µm



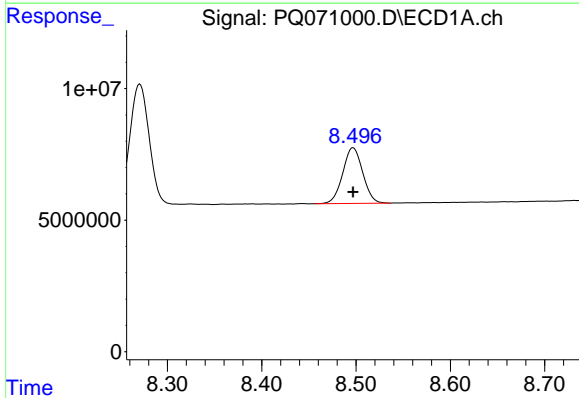


#1 Tetrachloro-m-xylene  
 R.T.: 3.400 min  
 Delta R.T.: 0.000 min  
 Response: 24662420  
 Conc: 5.05 ng/ml

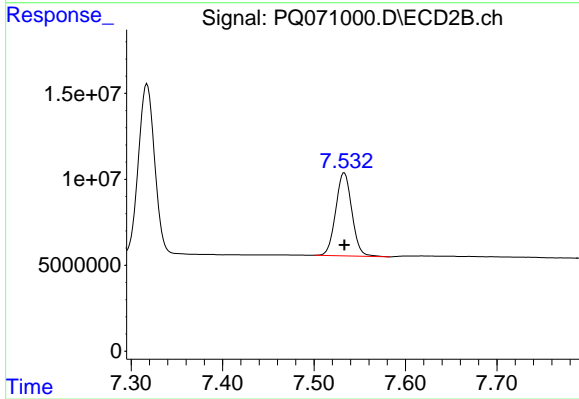
Instrument :  
 ECD\_Q  
 ClientSampleId :  
 AR1268ICC050



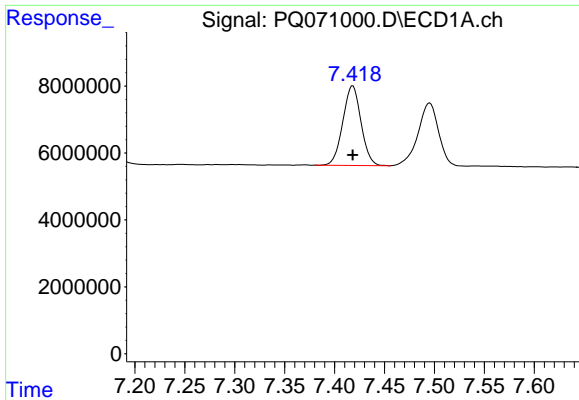
#1 Tetrachloro-m-xylene  
 R.T.: 2.778 min  
 Delta R.T.: 0.000 min  
 Response: 28347182  
 Conc: 4.97 ng/ml



#2 Decachlorobiphenyl  
 R.T.: 8.497 min  
 Delta R.T.: 0.000 min  
 Response: 31115212  
 Conc: 5.16 ng/ml



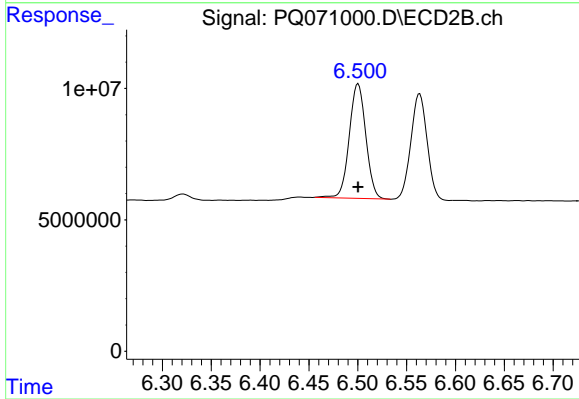
#2 Decachlorobiphenyl  
 R.T.: 7.533 min  
 Delta R.T.: 0.000 min  
 Response: 59480232  
 Conc: 5.38 ng/ml



#41 AR-1268-1

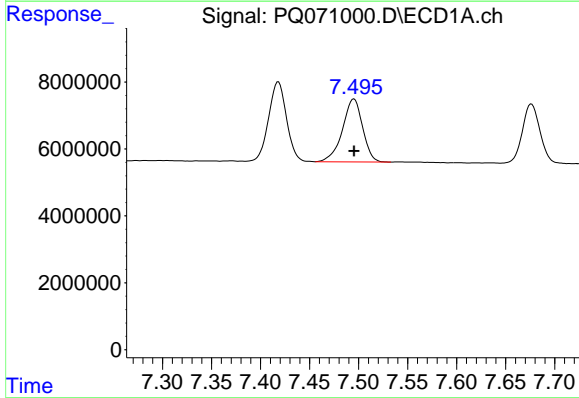
R.T.: 7.418 min  
 Delta R.T.: 0.000 min  
 Response: 30187398  
 Conc: 51.81 ng/ml

Instrument :  
 ECD\_Q  
 ClientSampleId :  
 AR1268ICC050



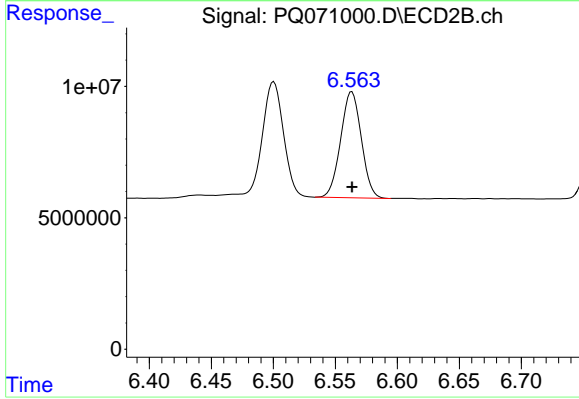
#41 AR-1268-1

R.T.: 6.500 min  
 Delta R.T.: 0.000 min  
 Response: 51549310  
 Conc: 52.90 ng/ml



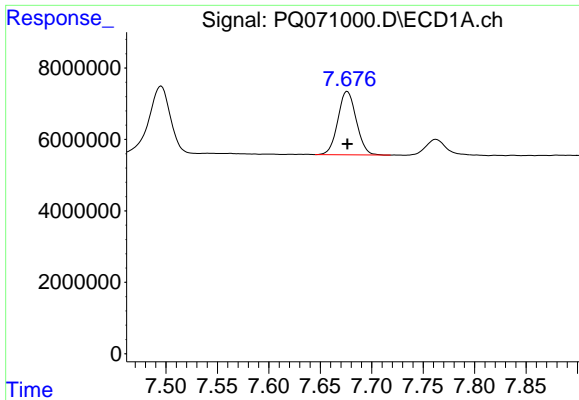
#42 AR-1268-2

R.T.: 7.495 min  
 Delta R.T.: 0.000 min  
 Response: 26994207  
 Conc: 50.85 ng/ml



#42 AR-1268-2

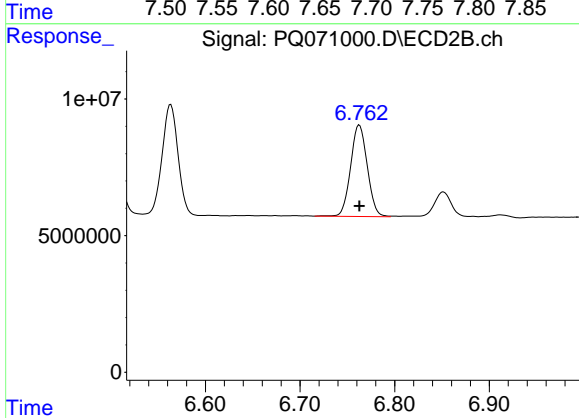
R.T.: 6.563 min  
 Delta R.T.: 0.000 min  
 Response: 46812925  
 Conc: 52.09 ng/ml



#43 AR-1268-3

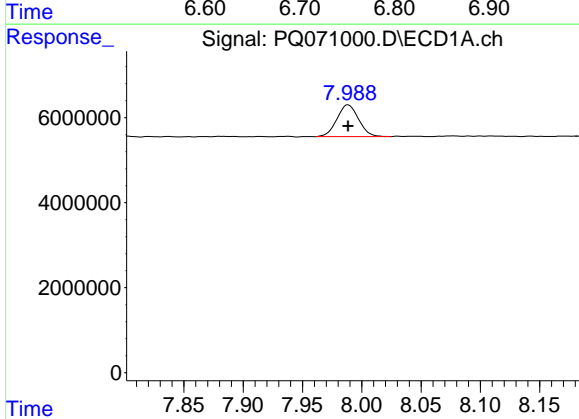
R.T.: 7.676 min  
 Delta R.T.: 0.000 min  
 Response: 22122982  
 Conc: 51.06 ng/ml

Instrument :  
 ECD\_Q  
 ClientSampleId :  
 AR1268ICC050



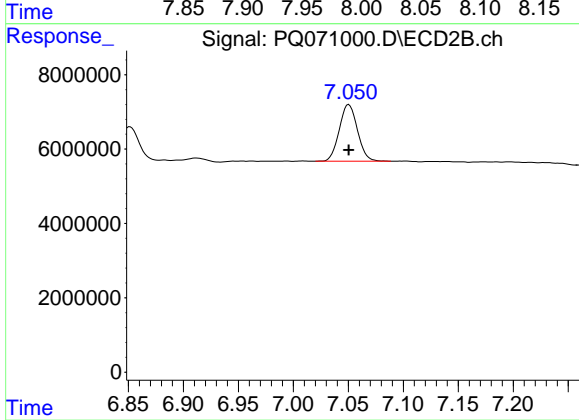
#43 AR-1268-3

R.T.: 6.763 min  
 Delta R.T.: 0.000 min  
 Response: 41071128  
 Conc: 52.54 ng/ml



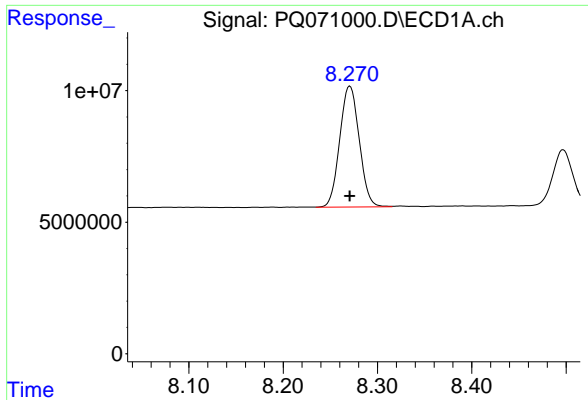
#44 AR-1268-4

R.T.: 7.989 min  
 Delta R.T.: 0.000 min  
 Response: 9507758  
 Conc: 50.66 ng/ml



#44 AR-1268-4

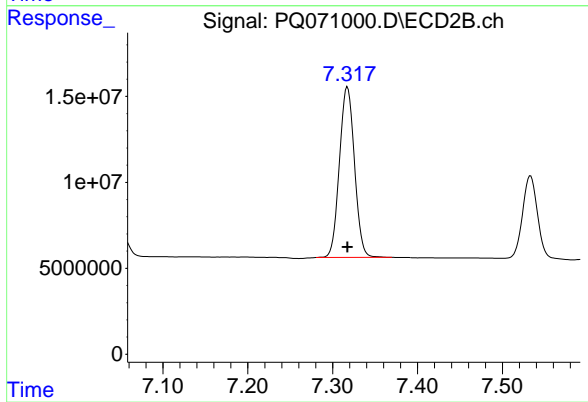
R.T.: 7.050 min  
 Delta R.T.: 0.000 min  
 Response: 17547775  
 Conc: 50.93 ng/ml



#45 AR-1268-5

R.T.: 8.271 min  
Delta R.T.: 0.000 min  
Response: 65947884  
Conc: 50.28 ng/ml

Instrument :  
ECD\_Q  
ClientSampleId :  
AR1268ICC050



#45 AR-1268-5

R.T.: 7.317 min  
Delta R.T.: 0.000 min  
Response: 122222176  
Conc: 50.50 ng/ml