

Data Path : Z:\pestpcbsrv\HPCHEM1\ECD_S\Data\PS102725\
 Data File : PS032165.D
 Signal(s) : Signal #1: ECD1A.ch Signal #2: ECD2B.ch
 Acq On : 27 Oct 2025 12:32
 Operator : AR\AJ
 Sample : HSTDICC750
 Misc :
 ALS Vial : 5 Sample Multiplier: 1

Instrument :
 ECD_S
 ClientSampleId :
 HSTDICC750

Integration File signal 1: autoint1.e
 Integration File signal 2: autoint2.e
 Quant Time: Oct 27 13:59:21 2025
 Quant Method : Z:\pestpcbsrv\HPCHEM1\ECD_S\Method\PS102725.M
 Quant Title : 8080.M
 QLast Update : Mon Oct 27 13:59:06 2025
 Response via : Initial Calibration
 Integrator: ChemStation

Volume Inj. : 1 µl
 Signal #1 Phase : ZB-MR2 Signal #2 Phase: ZB-MR2
 Signal #1 Info : 30M x 0.32mm x0.5 Signal #2 Info : 30M x 0.32mm x 0.25µm

Compound	RT#1	RT#2	Resp#1	Resp#2	ng/ml	ng/ml

System Monitoring Compounds						
4) S 2,4-DCAA	7.275	7.738	3221.3E6	825.5E6	750.000	750.000
Target Compounds						
1) T Dalapon	2.658	2.685	4826.9E6	2538.8E6	682.500	682.500
2) T 3,5-DICHL...	6.443	6.692	4369.6E6	1301.1E6	697.500	697.500
3) T 4-Nitroph...	7.098	7.297	784.2E6	1059.2E6	682.500	682.500
5) T DICAMBA	7.457	7.932	12964.4E6	5747.5E6	705.000	705.000
6) T MCPP	7.635	8.029	799.8E6	192.4E6	70.500	70.500
7) T MCPA	7.783	8.276	938.2E6	256.6E6	69.750	69.750
8) T DICHLORPROP	8.165	8.652	2951.4E6	1278.6E6	705.000	705.000
9) T 2,4-D	8.406	8.995	2867.7E6	1388.8E6	705.000	705.000
10) T Pentachlo...	8.697	9.499	45659.2E6	36669.8E6	712.500	712.500
11) T 2,4,5-TP ...	9.272	9.884	17592.6E6	13492.8E6	712.500	712.500
12) T 2,4,5-T	9.571	10.314	15544.5E6	11706.4E6	712.500	712.500
13) T 2,4-DB	10.147	10.882	1697.8E6	946.4E6	712.500	712.500
14) T DINOSEB	11.336	11.255	13440.1E6	9791.2E6	705.000	705.000
15) T Picloram	11.175	12.379	13980.5E6	21617.4E6	712.500	712.500
16) T DCPA	11.636	12.295	22960.0E6	22542.4E6	720.000	720.000

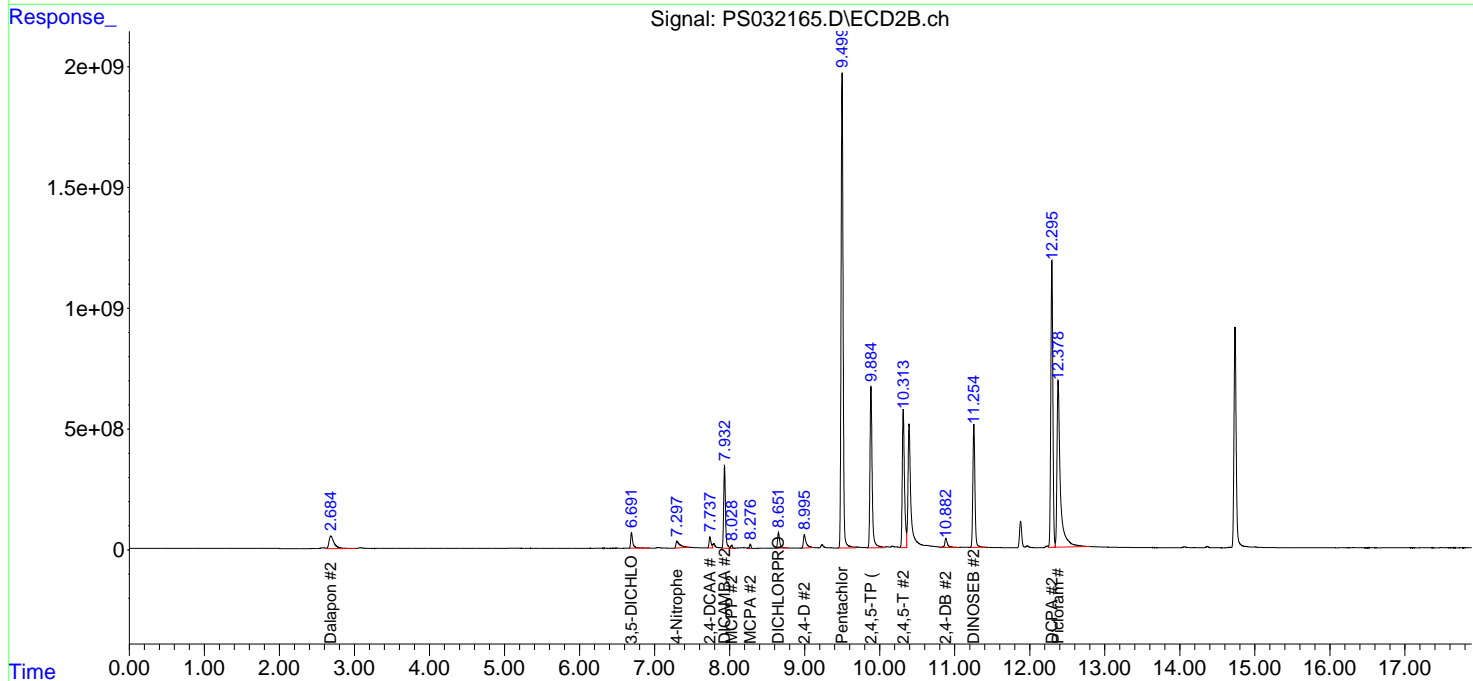
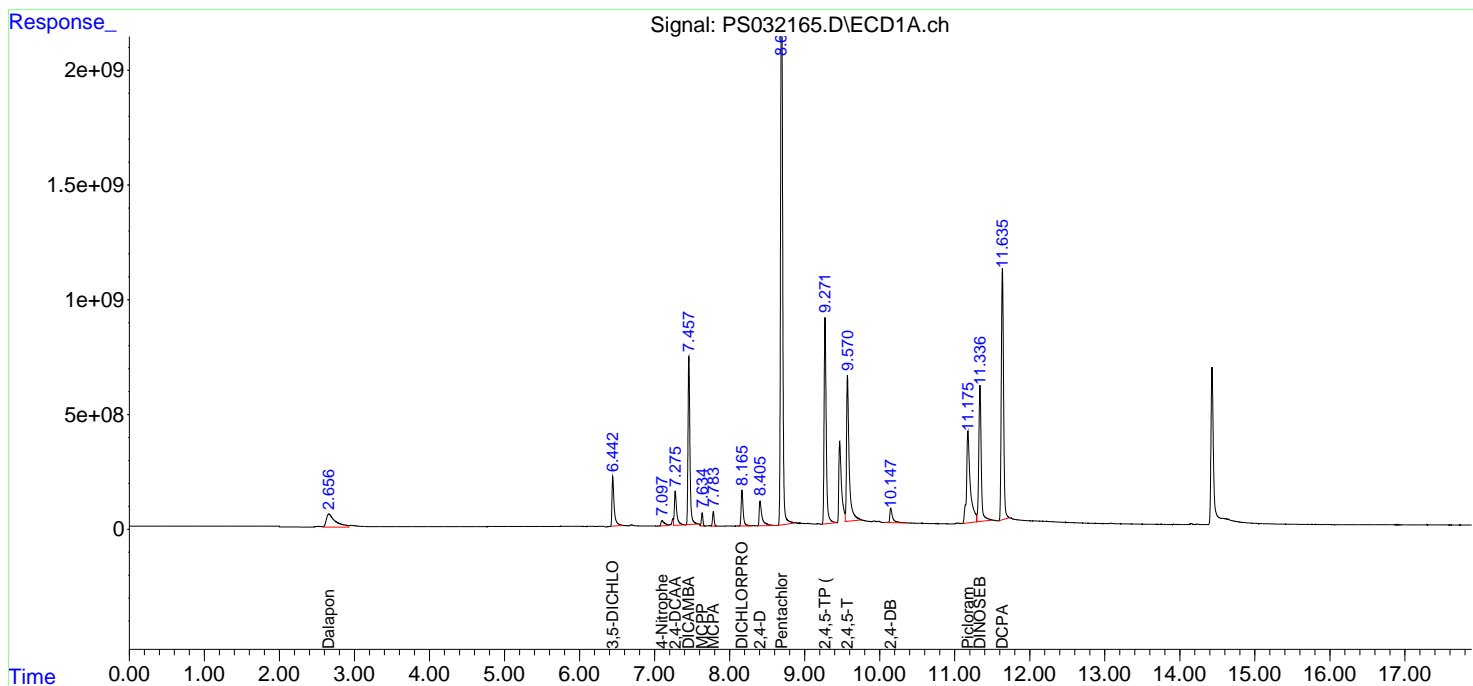
(f)=RT Delta > 1/2 Window (#)=Amounts differ by > 25% (m)=manual int.

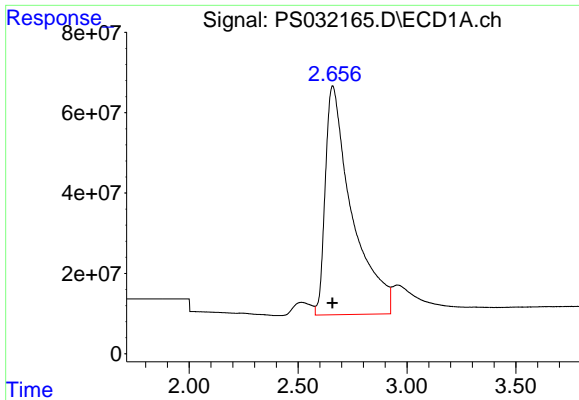
Data Path : Z:\pestpcbsrv\HPCHEM1\ECD_S\Data\PS102725\
 Data File : PS032165.D
 Signal(s) : Signal #1: ECD1A.ch Signal #2: ECD2B.ch
 Acq On : 27 Oct 2025 12:32
 Operator : AR\AJ
 Sample : HSTDICC750
 Misc :
 ALS Vial : 5 Sample Multiplier: 1

Instrument :
 ECD_S
 ClientSampleId :
 HSTDICC750

Integration File signal 1: autoint1.e
 Integration File signal 2: autoint2.e
 Quant Time: Oct 27 13:59:21 2025
 Quant Method : Z:\pestpcbsrv\HPCHEM1\ECD_S\Method\PS102725.M
 Quant Title : 8080.M
 QLast Update : Mon Oct 27 13:59:06 2025
 Response via : Initial Calibration
 Integrator: ChemStation

Volume Inj. : 1 µl
 Signal #1 Phase : ZB-MR1 Signal #2 Phase: ZB-MR2
 Signal #1 Info : 30M x 0.32mm x0.5 Signal #2 Info : 30M x 0.32mm x 0.25µm

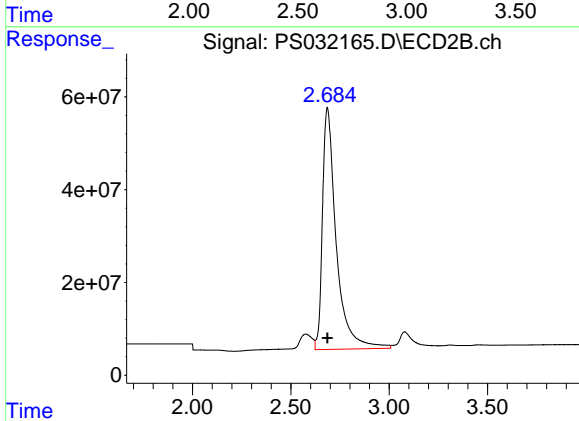




#1 Dalapon

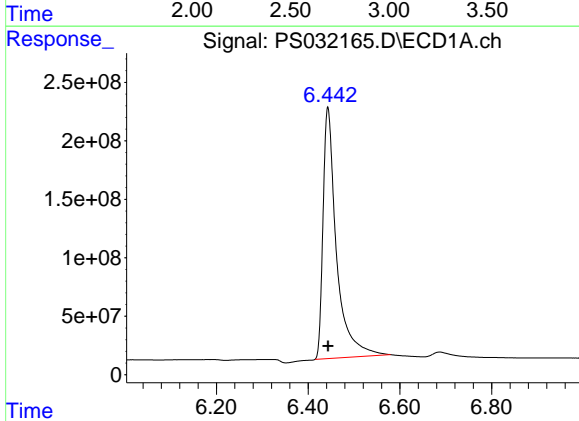
R.T.: 2.658 min
 Delta R.T.: 0.000 min
 Response: 4826869215
 Conc: 682.50 ng/ml

Instrument :
 ECD_S
 ClientSampleId :
 HSTDICC750



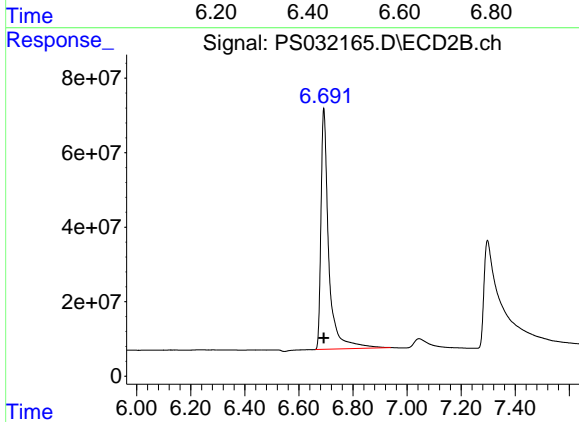
#1 Dalapon

R.T.: 2.685 min
 Delta R.T.: 0.000 min
 Response: 2538764910
 Conc: 682.50 ng/ml



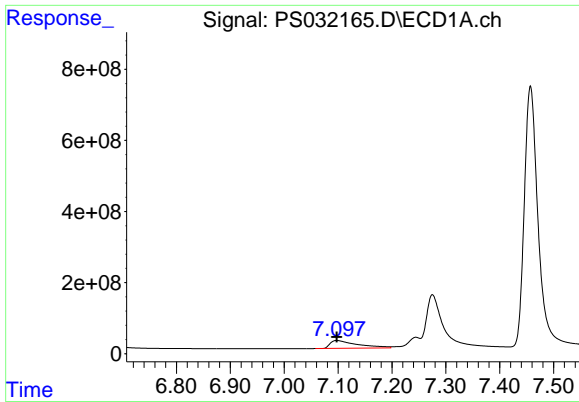
#2 3,5-DICHLOROBENZOIC ACID

R.T.: 6.443 min
 Delta R.T.: 0.000 min
 Response: 4369598275
 Conc: 697.50 ng/ml



#2 3,5-DICHLOROBENZOIC ACID

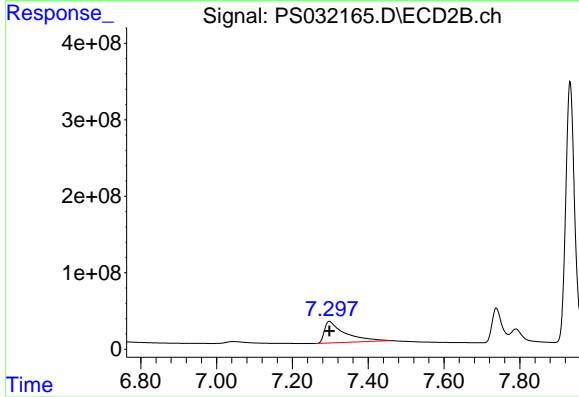
R.T.: 6.692 min
 Delta R.T.: 0.000 min
 Response: 1301066509
 Conc: 697.50 ng/ml



#3 4-Nitrophenol

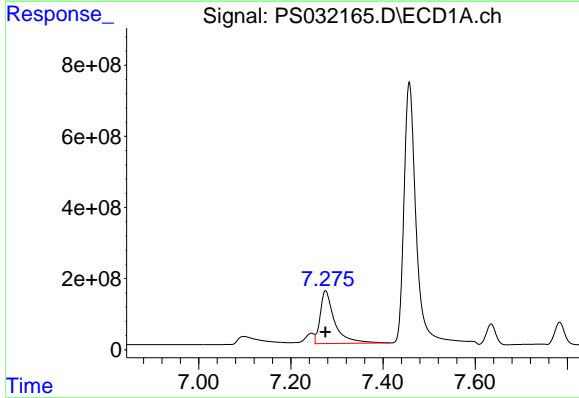
R.T.: 7.098 min
 Delta R.T.: 0.000 min
 Response: 784221796
 Conc: 682.50 ng/ml

Instrument :
 ECD_S
 ClientSampleId :
 HSTDICC750



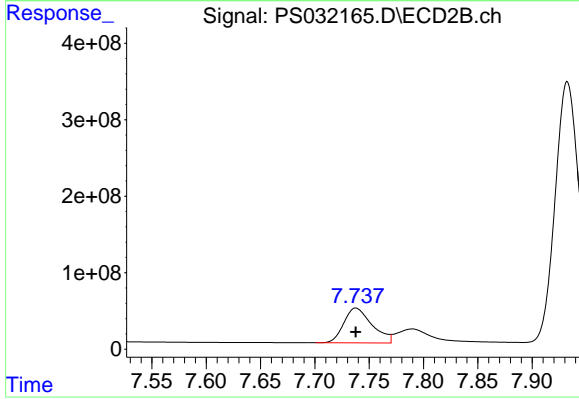
#3 4-Nitrophenol

R.T.: 7.297 min
 Delta R.T.: 0.000 min
 Response: 1059243079
 Conc: 682.50 ng/ml



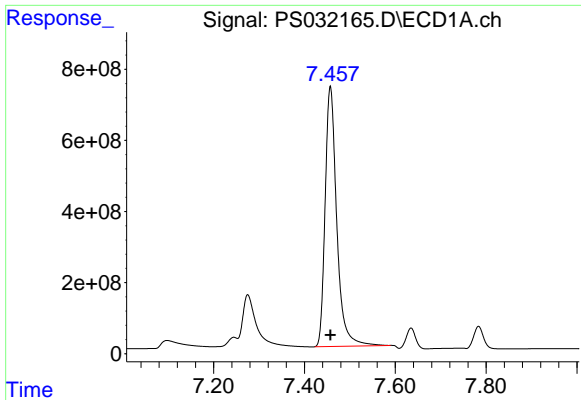
#4 2,4-DCAA

R.T.: 7.275 min
 Delta R.T.: 0.000 min
 Response: 3221294027
 Conc: 750.00 ng/ml



#4 2,4-DCAA

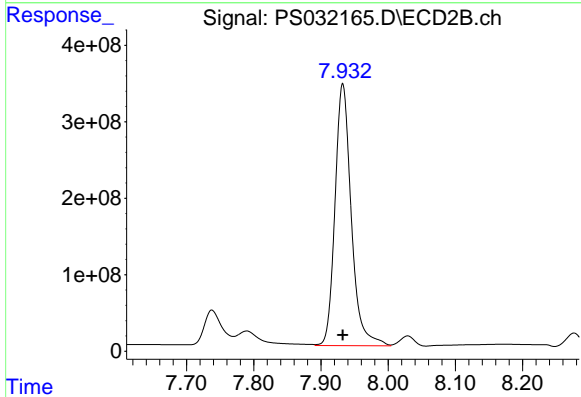
R.T.: 7.738 min
 Delta R.T.: 0.000 min
 Response: 825477202
 Conc: 750.00 ng/ml



#5 DICAMBA

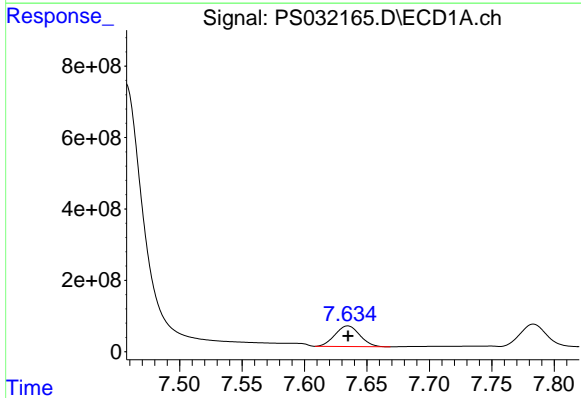
R.T.: 7.457 min
 Delta R.T.: 0.000 min
 Response: 12964423592
 Conc: 705.00 ng/ml

Instrument :
 ECD_S
 ClientSampleId :
 HSTDICC750



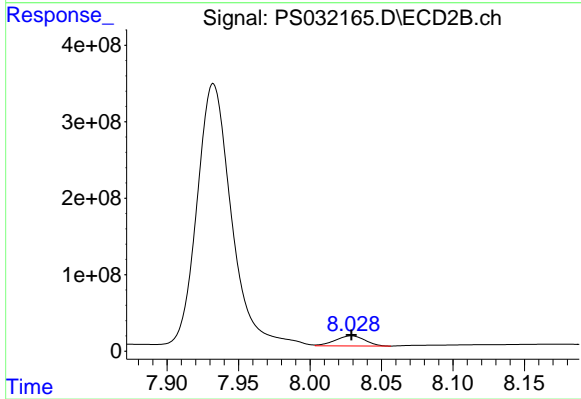
#5 DICAMBA

R.T.: 7.932 min
 Delta R.T.: 0.000 min
 Response: 5747541256
 Conc: 705.00 ng/ml



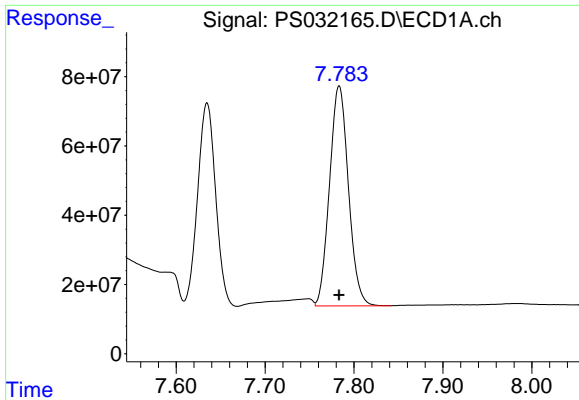
#6 MCPP

R.T.: 7.635 min
 Delta R.T.: 0.000 min
 Response: 799837021
 Conc: 70.50 ug/ml



#6 MCPP

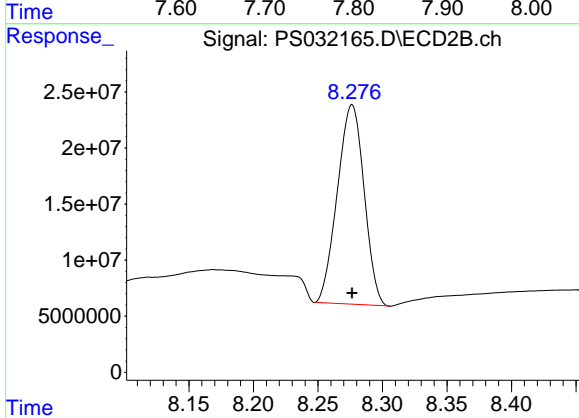
R.T.: 8.029 min
 Delta R.T.: 0.000 min
 Response: 192418127
 Conc: 70.50 ug/ml



#7 MCPA

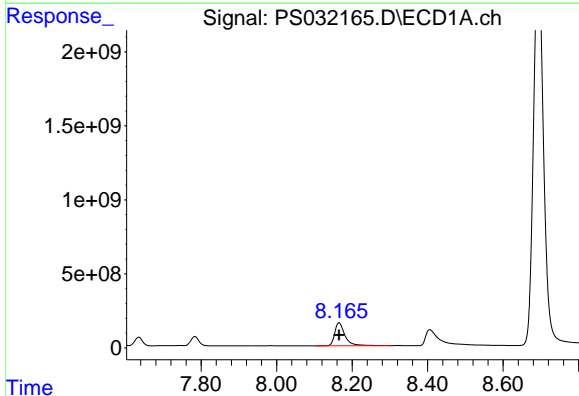
R.T.: 7.783 min
 Delta R.T.: 0.000 min
 Response: 938200625
 Conc: 69.75 ug/ml

Instrument :
 ECD_S
 ClientSampleId :
 HSTDICC750



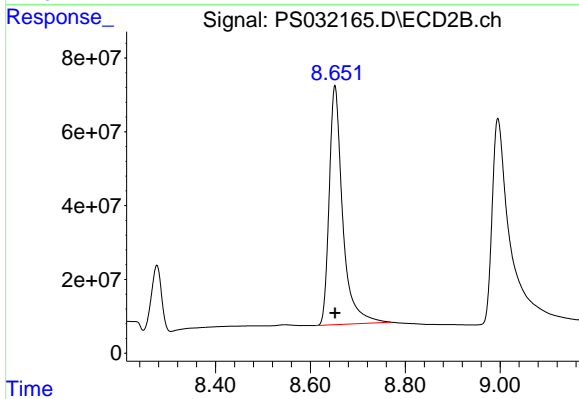
#7 MCPA

R.T.: 8.276 min
 Delta R.T.: 0.000 min
 Response: 256559474
 Conc: 69.75 ug/ml



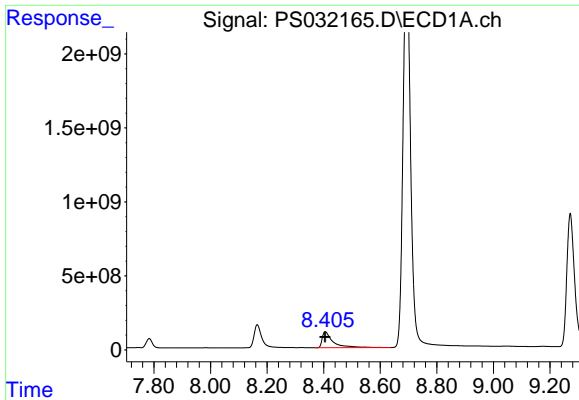
#8 DICHLORPROP

R.T.: 8.165 min
 Delta R.T.: 0.000 min
 Response: 2951364121
 Conc: 705.00 ng/ml



#8 DICHLORPROP

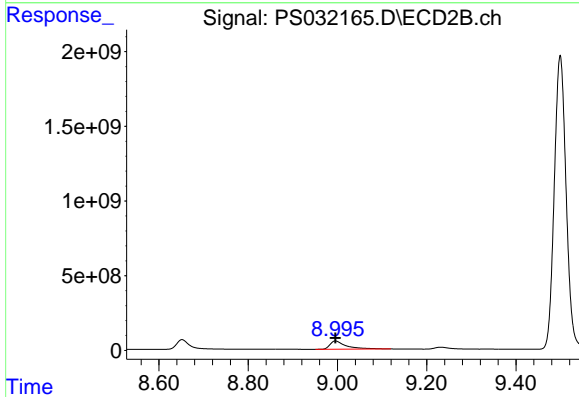
R.T.: 8.652 min
 Delta R.T.: 0.000 min
 Response: 1278608145
 Conc: 705.00 ng/ml



#9 2,4-D

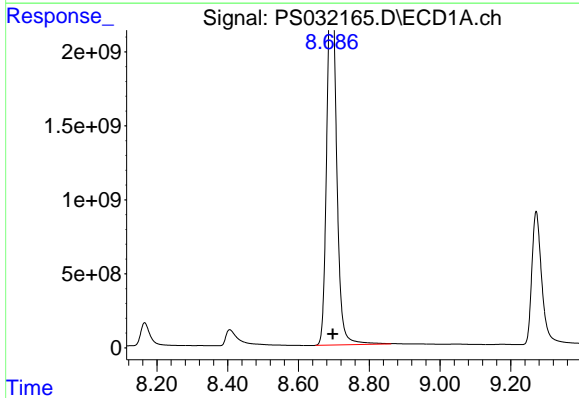
R.T.: 8.406 min
 Delta R.T.: 0.000 min
 Response: 2867735722
 Conc: 705.00 ng/ml

Instrument :
 ECD_S
 ClientSampleId :
 HSTDICC750



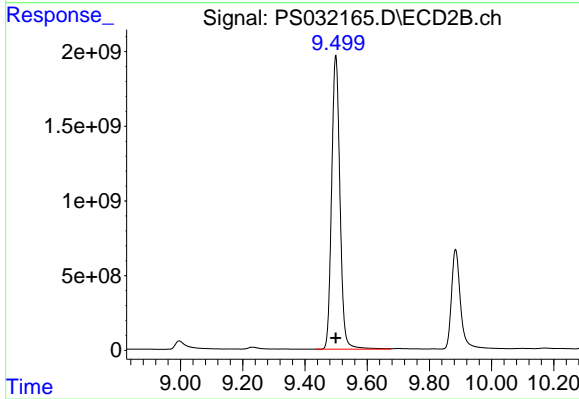
#9 2,4-D

R.T.: 8.995 min
 Delta R.T.: 0.000 min
 Response: 1388828481
 Conc: 705.00 ng/ml



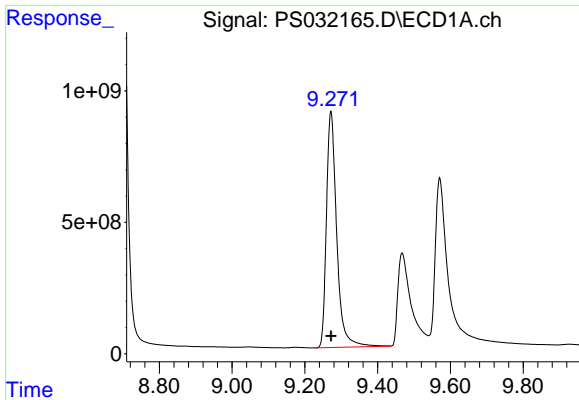
#10 Pentachlorophenol

R.T.: 8.697 min
 Delta R.T.: 0.000 min
 Response: 45659211067
 Conc: 712.50 ng/ml



#10 Pentachlorophenol

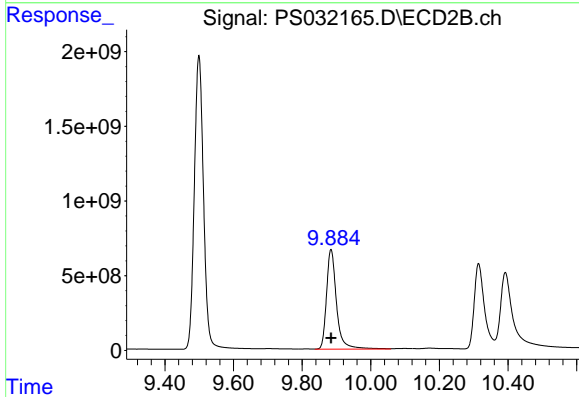
R.T.: 9.499 min
 Delta R.T.: 0.000 min
 Response: 36669791508
 Conc: 712.50 ng/ml



#11 2,4,5-TP (SILVEX)

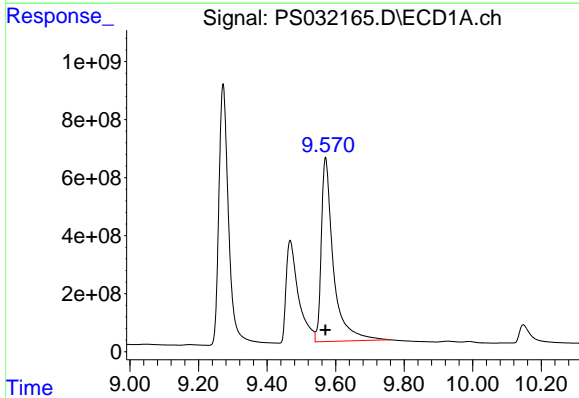
R.T.: 9.272 min
 Delta R.T.: 0.000 min
 Response: 17592641082
 Conc: 712.50 ng/ml

Instrument :
 ECD_S
 ClientSampleId :
 HSTDICC750



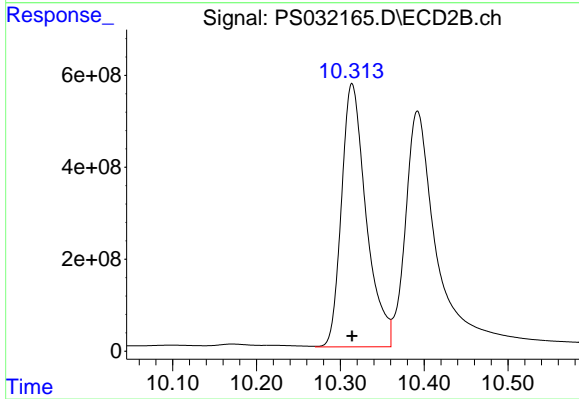
#11 2,4,5-TP (SILVEX)

R.T.: 9.884 min
 Delta R.T.: 0.000 min
 Response: 13492780134
 Conc: 712.50 ng/ml



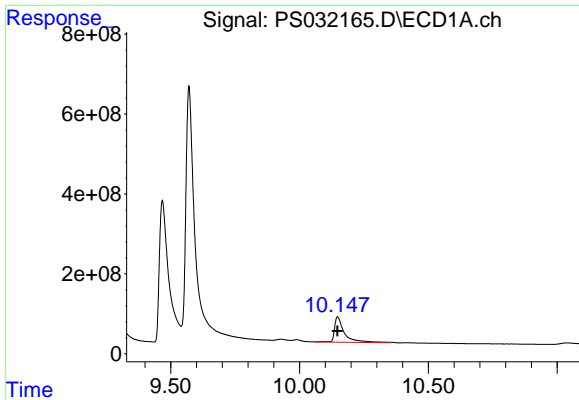
#12 2,4,5-T

R.T.: 9.571 min
 Delta R.T.: 0.000 min
 Response: 15544497730
 Conc: 712.50 ng/ml



#12 2,4,5-T

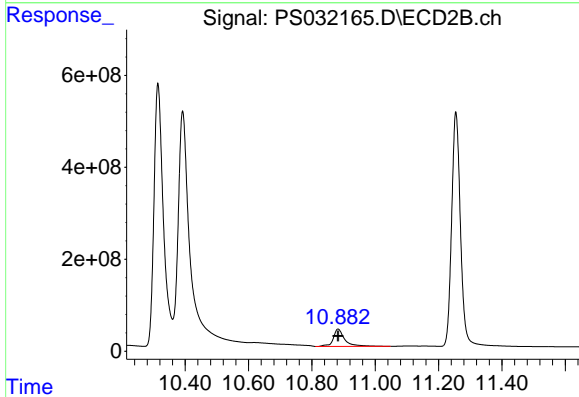
R.T.: 10.314 min
 Delta R.T.: 0.000 min
 Response: 11706353593
 Conc: 712.50 ng/ml



#13 2,4-DB

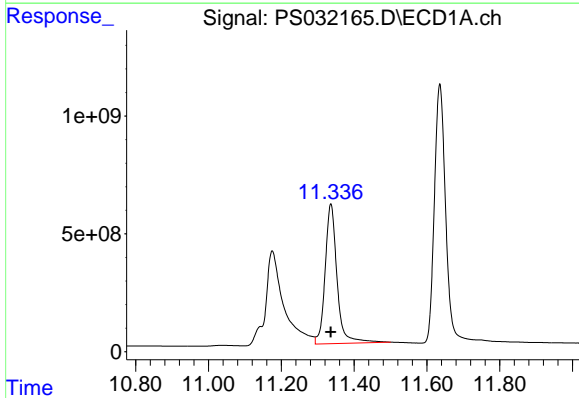
R.T.: 10.147 min
 Delta R.T.: 0.000 min
 Response: 1697800664
 Conc: 712.50 ng/ml

Instrument :
 ECD_S
 ClientSampleId :
 HSTDICC750



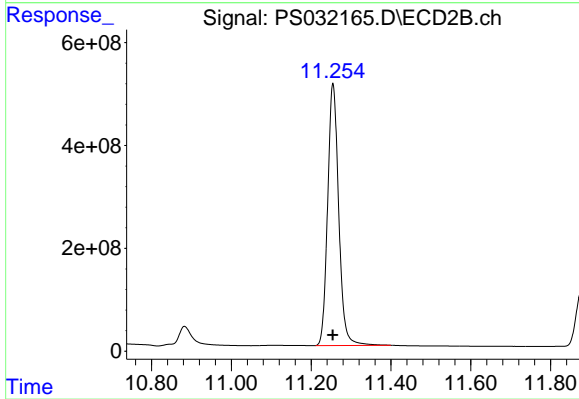
#13 2,4-DB

R.T.: 10.882 min
 Delta R.T.: 0.000 min
 Response: 946373828
 Conc: 712.50 ng/ml



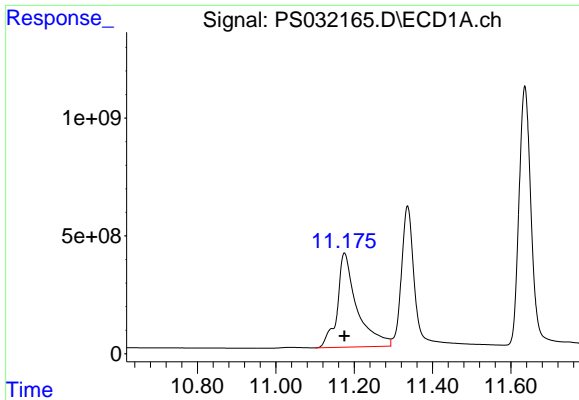
#14 DINOSEB

R.T.: 11.336 min
 Delta R.T.: 0.000 min
 Response: 13440063873
 Conc: 705.00 ng/ml



#14 DINOSEB

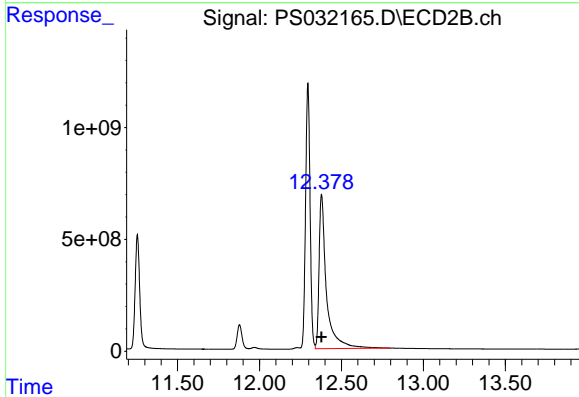
R.T.: 11.255 min
 Delta R.T.: 0.000 min
 Response: 9791208625
 Conc: 705.00 ng/ml



#15 Picloram

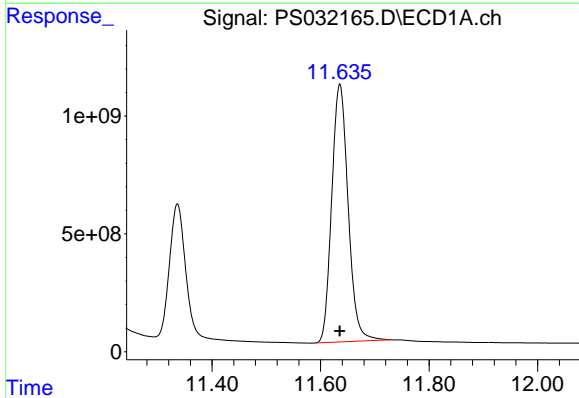
R.T.: 11.175 min
 Delta R.T.: 0.000 min
 Response: 13980518313
 Conc: 712.50 ng/ml

Instrument :
 ECD_S
 ClientSampleId :
 HSTDICC750



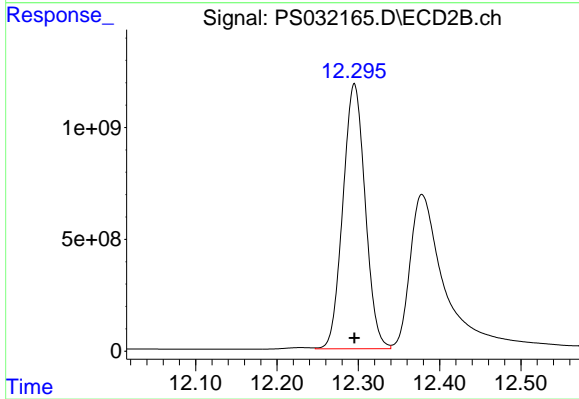
#15 Picloram

R.T.: 12.379 min
 Delta R.T.: 0.000 min
 Response: 21617376832
 Conc: 712.50 ng/ml



#16 DCPA

R.T.: 11.636 min
 Delta R.T.: 0.000 min
 Response: 22960035985
 Conc: 720.00 ng/ml



#16 DCPA

R.T.: 12.295 min
 Delta R.T.: 0.000 min
 Response: 22542400802
 Conc: 720.00 ng/ml