

Data Path : Z:\pestpcbsrv\HPCHEM1\ECD_S\Data\PS102725\
 Data File : PS032191.D
 Signal(s) : Signal #1: ECD1A.ch Signal #2: ECD2B.ch
 Acq On : 28 Oct 2025 01:41
 Operator : AR\AJ
 Sample : Q3447-04
 Misc :
 ALS Vial : 29 Sample Multiplier: 1

Instrument :
 ECD_S
ClientSampleId :
 P001-TW2-251023-01

Manual Integrations
APPROVED

Reviewed By :Abdul Mirza 10/28/2025
 Supervised By :mohammad ahmed 10/29/2025

Integration File signal 1: autoint1.e
 Integration File signal 2: autoint2.e
 Quant Time: Oct 28 06:25:07 2025
 Quant Method : Z:\pestpcbsrv\HPCHEM1\ECD_S\Method\PS102725.M
 Quant Title : 8080.M
 QLast Update : Tue Oct 28 04:40:54 2025
 Response via : Initial Calibration
 Integrator: ChemStation

Volume Inj. : 1 µl
 Signal #1 Phase : ZB-MR1 Signal #2 Phase: ZB-MR2
 Signal #1 Info : 30M x 0.32mm x0.5 Signal #2 Info : 30M x 0.32mm x 0.25µm

Compound	RT#1	RT#2	Resp#1	Resp#2	ng/ml	ng/ml

System Monitoring Compounds						
4) S 2,4-DCAA	7.273	7.739	1633.9E6	65976854	377.895	60.334m#

Target Compounds

(f)=RT Delta > 1/2 Window (#)=Amounts differ by > 25% (m)=manual int.

Data Path : Z:\pestpcbsrv\HPCHEM1\ECD_S\Data\PS102725\
 Data File : PS032191.D
 Signal(s) : Signal #1: ECD1A.ch Signal #2: ECD2B.ch
 Acq On : 28 Oct 2025 01:41
 Operator : AR\AJ
 Sample : Q3447-04
 Misc :
 ALS Vial : 29 Sample Multiplier: 1

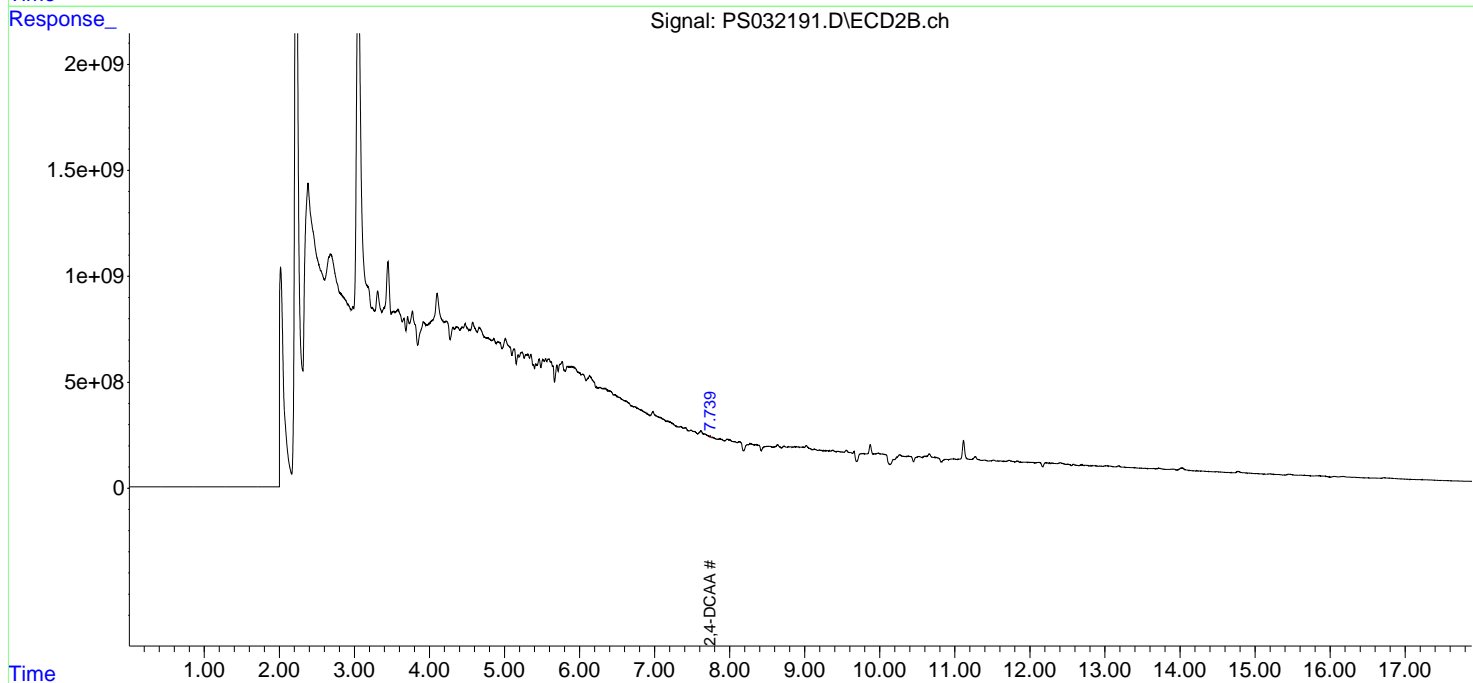
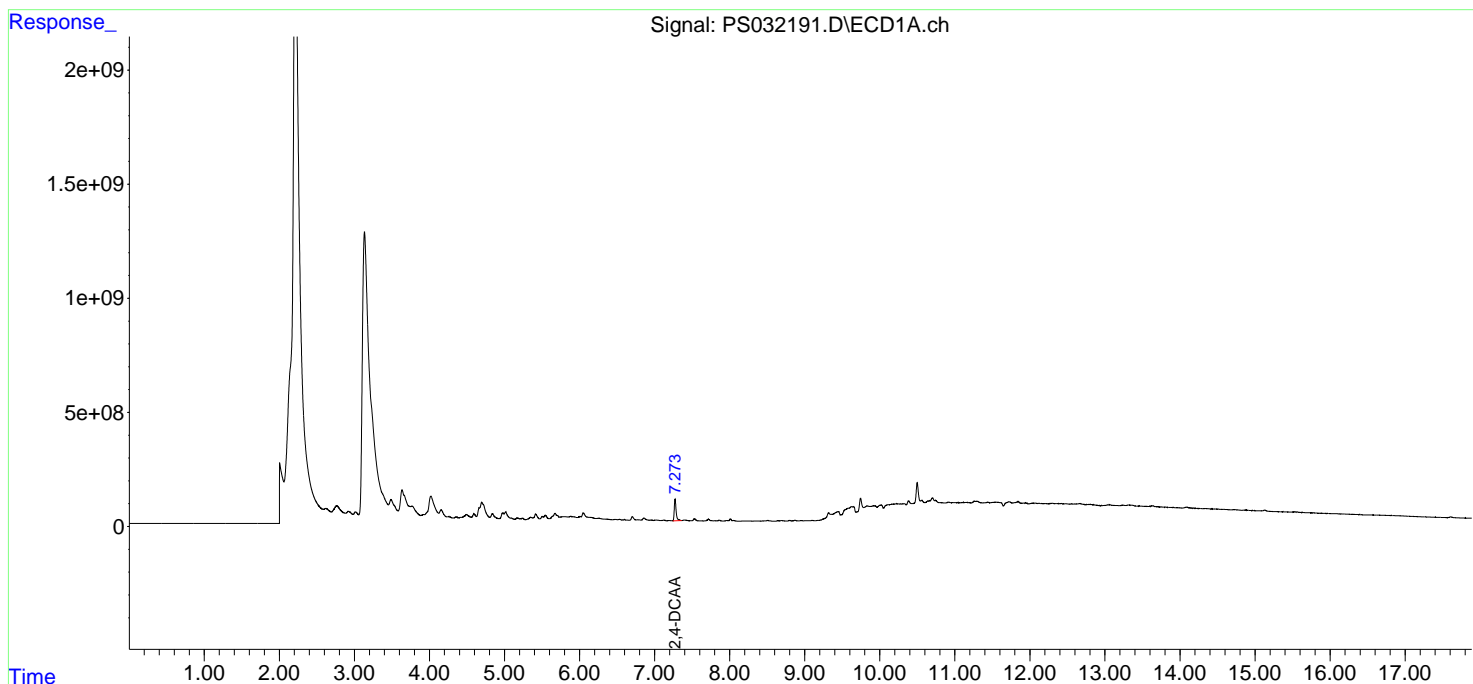
Instrument :
 ECD_S
ClientSampleId :
 P001-TW2-251023-01

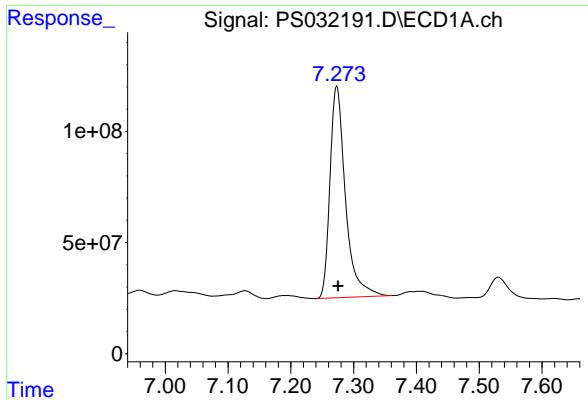
Manual Integrations
APPROVED

Reviewed By :Abdul Mirza 10/28/2025
 Supervised By :mohammad ahmed 10/29/2025

Integration File signal 1: autoint1.e
 Integration File signal 2: autoint2.e
 Quant Time: Oct 28 06:25:07 2025
 Quant Method : Z:\pestpcbsrv\HPCHEM1\ECD_S\Method\PS102725.M
 Quant Title : 8080.M
 QLast Update : Tue Oct 28 04:40:54 2025
 Response via : Initial Calibration
 Integrator: ChemStation

Volume Inj. : 1 µl
 Signal #1 Phase : ZB-MR1 Signal #2 Phase: ZB-MR2
 Signal #1 Info : 30M x 0.32mm x0.5 Signal #2 Info : 30M x 0.32mm x 0.25µm





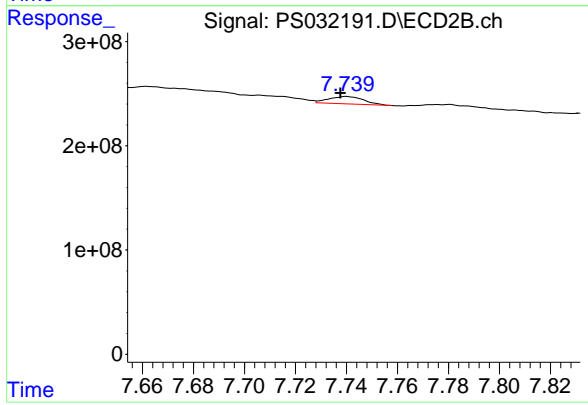
#4 2,4-DCAA

R.T.: 7.273 min
 Delta R.T.: -0.002 min
 Response: 1633889549
 Conc: 377.89 ng/ml

Instrument : ECD_S
 ClientSampleId : P001-TW2-251023-01

Manual Integrations
 APPROVED

Reviewed By :Abdul Mirza 10/28/2025
 Supervised By :mohammad ahmed 10/29/2025



#4 2,4-DCAA

R.T.: 7.739 min
 Delta R.T.: 0.002 min
 Response: 65976854
 Conc: 60.33 ng/ml m