

Data Path : Z:\pestpcbsrv\HPCHEM1\ECD\_P\Data\PP102125\  
 Data File : PP075904.D  
 Signal(s) : Signal #1: ECD1A.ch Signal #2: ECD2B.ch  
 Acq On : 21 Oct 2025 13:46  
 Operator : YP\AJ  
 Sample : AR1248ICC050  
 Misc :  
 ALS Vial : 19 Sample Multiplier: 1

**Instrument :**  
 ECD\_P  
**ClientSampleId :**  
 AR1248ICC050

**Manual Integrations**  
**APPROVED**  
 Reviewed By :Yogesh Patel 10/22/2025  
 Supervised By :mohammad ahmed 10/25/2025

Integration File signal 1: autoint1.e  
 Integration File signal 2: autoint2.e  
 Quant Time: Oct 21 14:29:55 2025  
 Quant Method : Z:\pestpcbsrv\HPCHEM1\ECD\_P\methods\PP102125.M  
 Quant Title : GC EXTRACTABLES  
 QLast Update : Tue Oct 21 14:13:23 2025  
 Response via : Initial Calibration  
 Integrator: ChemStation

Volume Inj. : 2 µl  
 Signal #1 Phase : ZB-MR1 Signal #2 Phase: ZB-MR2  
 Signal #1 Info : 30Mx0.32mmx 0.50µ Signal #2 Info : 30M x 0.32mm x 0.25µm

Compound	RT#1	RT#2	Resp#1	Resp#2	ng/ml	ng/ml
-----						
System Monitoring Compounds						
1) SA Tetrachlo...	4.645	3.780	7254273	27080772	4.751	3.914m
2) SA Decachlor...	10.422	8.783	6253432	36720401	5.099	4.188
Target Compounds						
21) L5 AR-1248-1	5.798	4.873	1700512	17991268	47.407	47.898
22) L5 AR-1248-2	6.069	5.101	2473817	12956514	50.751	52.688
23) L5 AR-1248-3	6.273	5.138	2547901	16065921	46.953	56.000
24) L5 AR-1248-4	6.669	5.313	3376964	14683789	49.218m	51.704m
25) L5 AR-1248-5	6.708	5.730	3390515	20852592	50.206m	38.783m
-----						

(f)=RT Delta > 1/2 Window (#)=Amounts differ by > 25% (m)=manual int.

Data Path : Z:\pestpcbsrv\HPCHEM1\ECD\_P\Data\PP102125\  
 Data File : PP075904.D  
 Signal(s) : Signal #1: ECD1A.ch Signal #2: ECD2B.ch  
 Acq On : 21 Oct 2025 13:46  
 Operator : YP\AJ  
 Sample : AR1248IC050  
 Misc :  
 ALS Vial : 19 Sample Multiplier: 1

**Instrument :**

ECD\_P

**ClientSampleId :**

AR1248IC050

**Manual Integrations**

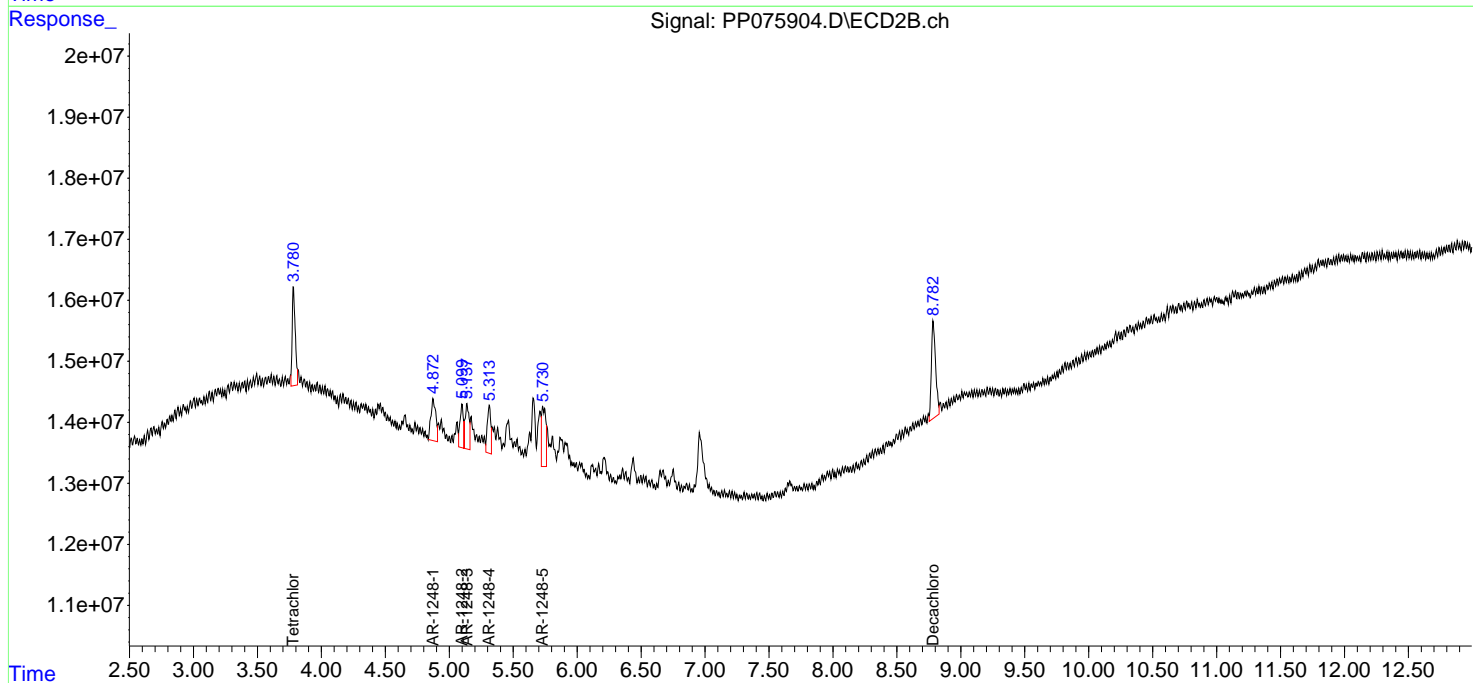
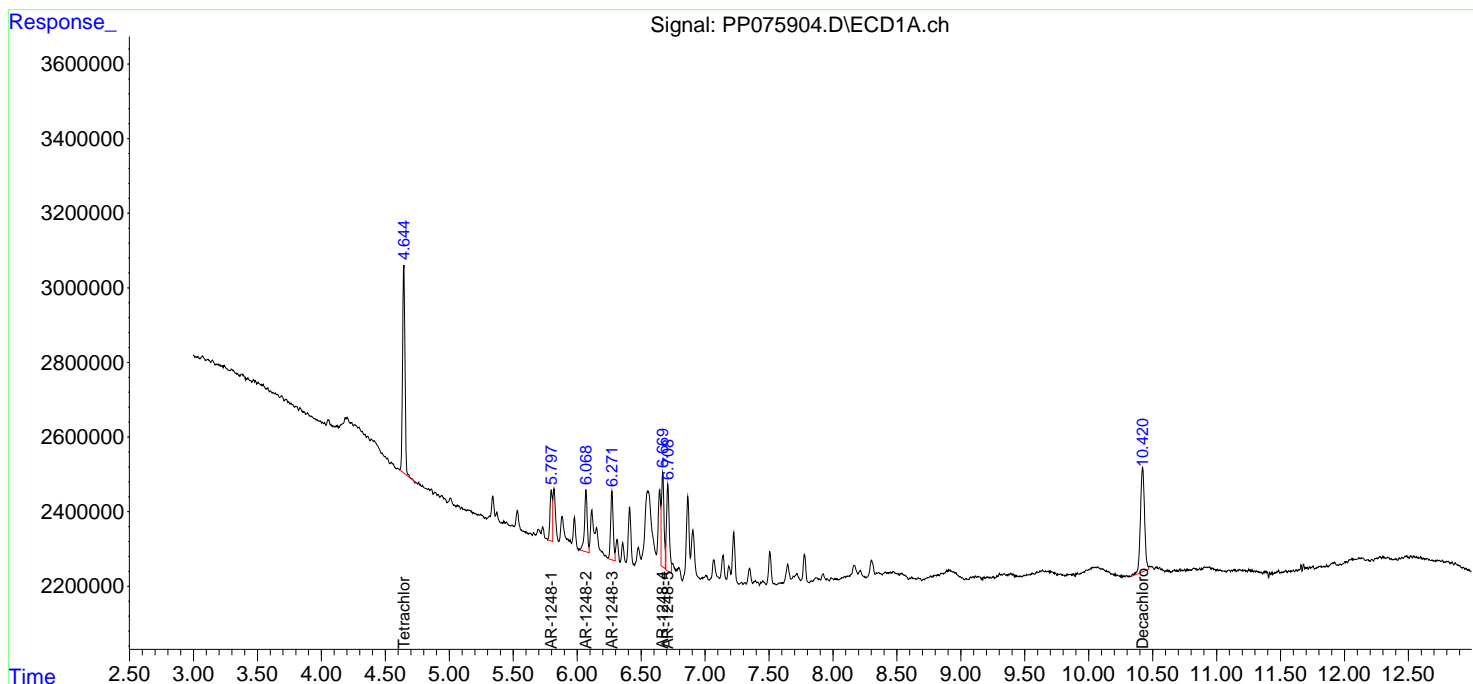
**APPROVED**

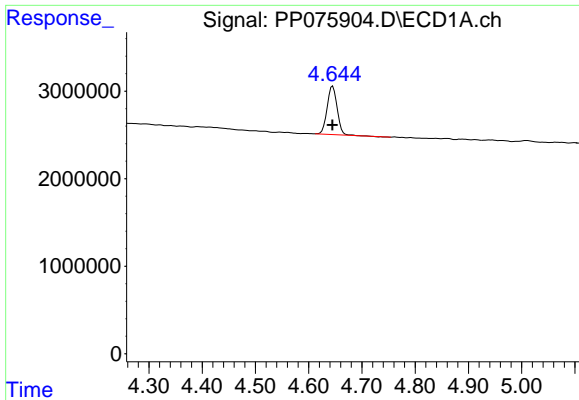
Reviewed By :Yogesh Patel 10/22/2025

Supervised By :mohammad ahmed 10/25/2025

Integration File signal 1: autoint1.e  
 Integration File signal 2: autoint2.e  
 Quant Time: Oct 21 14:29:55 2025  
 Quant Method : Z:\pestpcbsrv\HPCHEM1\ECD\_P\methods\PP102125.M  
 Quant Title : GC EXTRACTABLES  
 QLast Update : Tue Oct 21 14:13:23 2025  
 Response via : Initial Calibration  
 Integrator: ChemStation

Volume Inj. : 2 µl  
 Signal #1 Phase : ZB-MR1 Signal #2 Phase: ZB-MR2  
 Signal #1 Info : 30Mx0.32mmx 0.50µ Signal #2 Info : 30M x 0.32mm x 0.25µm



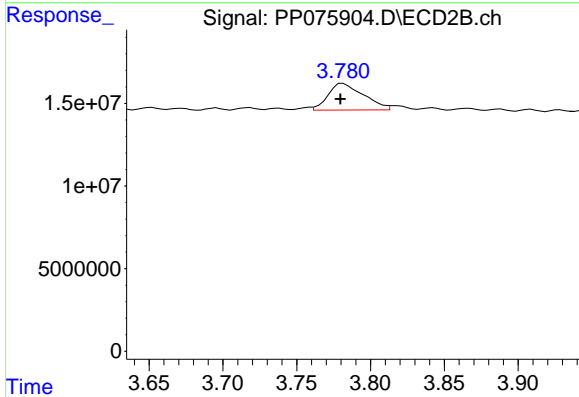


#1 Tetrachloro-m-xylene  
 R.T.: 4.645 min  
 Delta R.T.: 0.000 min  
 Response: 7254273  
 Conc: 4.75 ng/ml

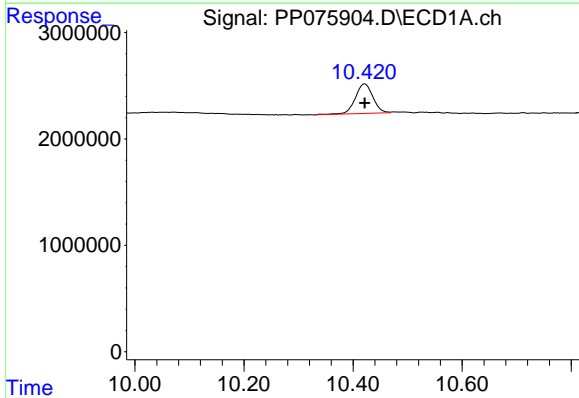
Instrument :  
 ECD\_P  
 ClientSampleId :  
 AR1248IC050

Manual Integrations  
 APPROVED

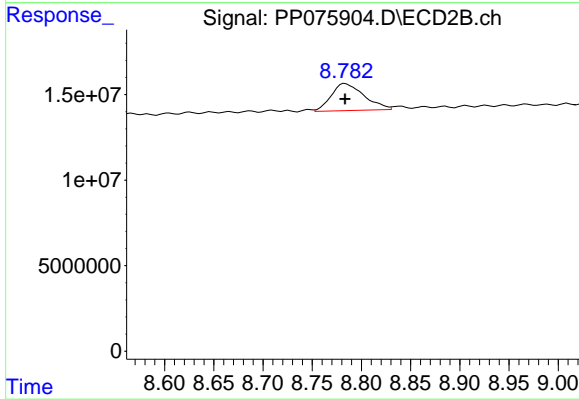
Reviewed By :Yogesh Patel 10/22/2025  
 Supervised By :mohammad ahmed 10/25/2025



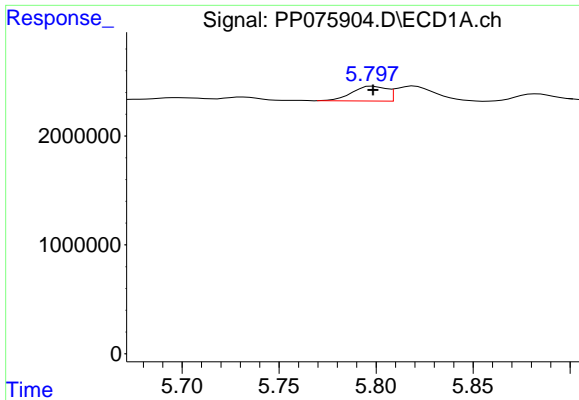
#1 Tetrachloro-m-xylene  
 R.T.: 3.780 min  
 Delta R.T.: 0.000 min  
 Response: 27080772  
 Conc: 3.91 ng/ml m



#2 Decachlorobiphenyl  
 R.T.: 10.422 min  
 Delta R.T.: 0.000 min  
 Response: 6253432  
 Conc: 5.10 ng/ml



#2 Decachlorobiphenyl  
 R.T.: 8.783 min  
 Delta R.T.: 0.000 min  
 Response: 36720401  
 Conc: 4.19 ng/ml



#21 AR-1248-1

R.T.: 5.798 min  
 Delta R.T.: 0.000 min  
 Response: 1700512  
 Conc: 47.41 ng/ml

Instrument :

ECD\_P

ClientSampleId :

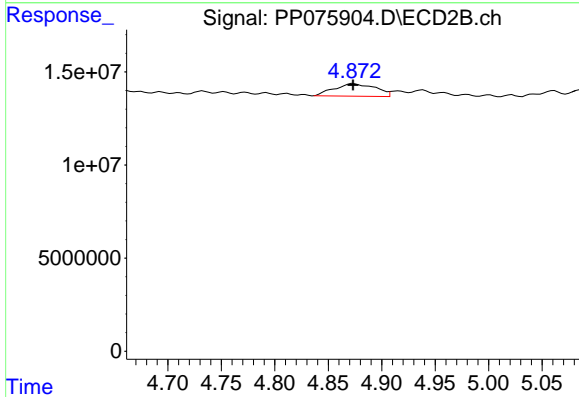
AR1248ICC050

Manual Integrations

APPROVED

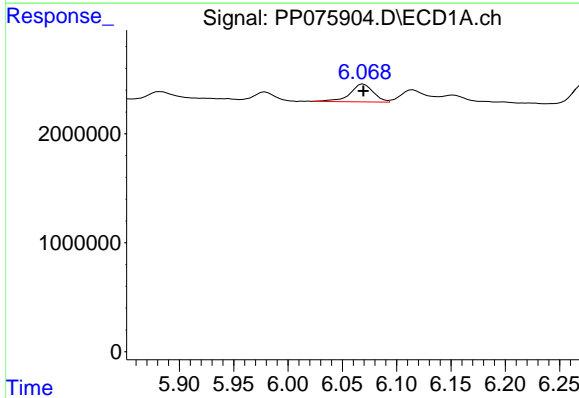
Reviewed By :Yogesh Patel 10/22/2025

Supervised By :mohammad ahmed 10/25/2025



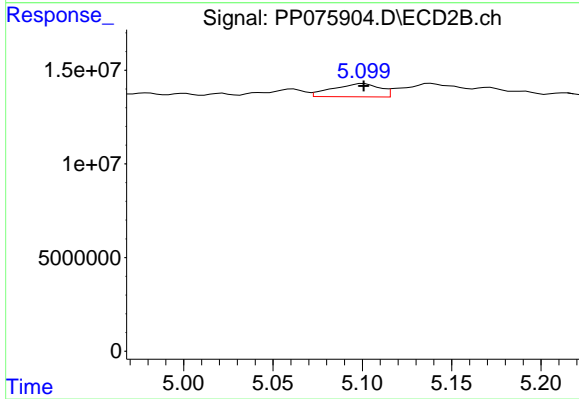
#21 AR-1248-1

R.T.: 4.873 min  
 Delta R.T.: 0.000 min  
 Response: 17991268  
 Conc: 47.90 ng/ml



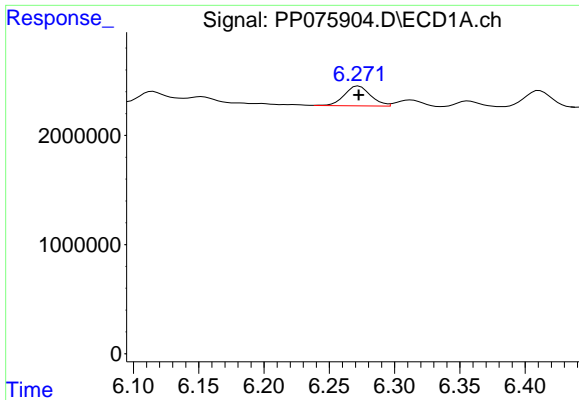
#22 AR-1248-2

R.T.: 6.069 min  
 Delta R.T.: 0.000 min  
 Response: 2473817  
 Conc: 50.75 ng/ml



#22 AR-1248-2

R.T.: 5.101 min  
 Delta R.T.: 0.000 min  
 Response: 12956514  
 Conc: 52.69 ng/ml



#23 AR-1248-3

R.T.: 6.273 min  
 Delta R.T.: 0.000 min  
 Response: 2547901  
 Conc: 46.95 ng/ml

Instrument :

ECD\_P

ClientSampleId :

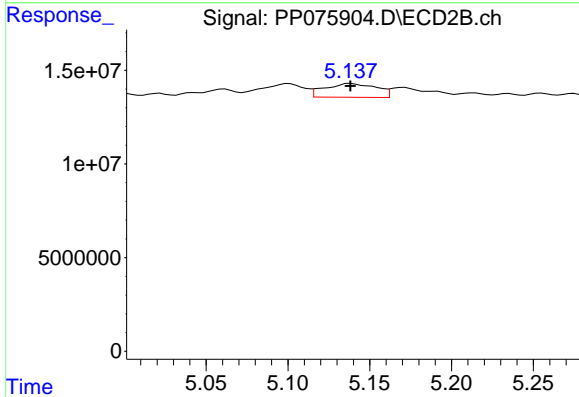
AR1248ICC050

Manual Integrations

APPROVED

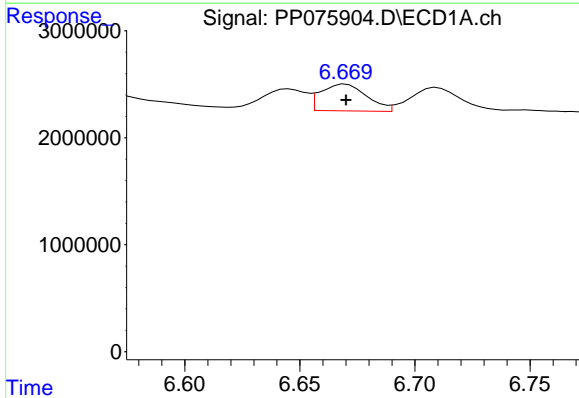
Reviewed By :Yogesh Patel 10/22/2025

Supervised By :mohammad ahmed 10/25/2025



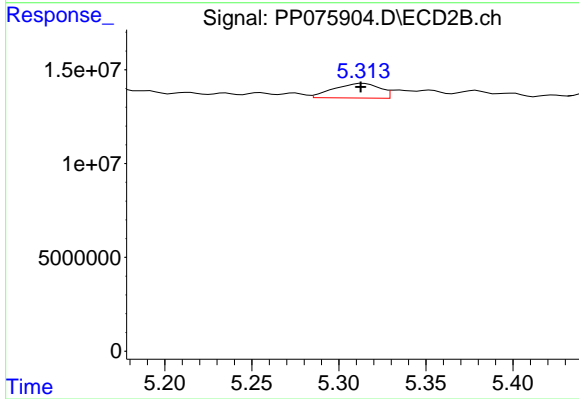
#23 AR-1248-3

R.T.: 5.138 min  
 Delta R.T.: 0.000 min  
 Response: 16065921  
 Conc: 56.00 ng/ml



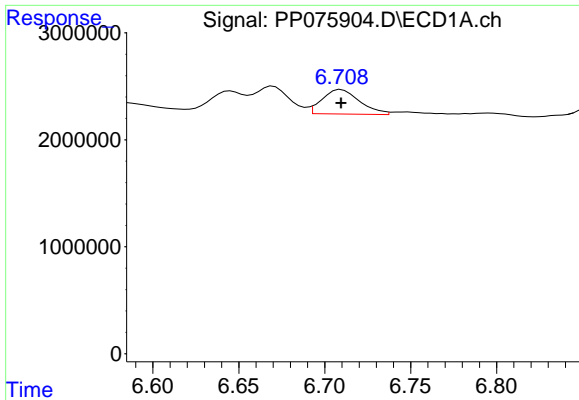
#24 AR-1248-4

R.T.: 6.669 min  
 Delta R.T.: -0.001 min  
 Response: 3376964  
 Conc: 49.22 ng/ml m



#24 AR-1248-4

R.T.: 5.313 min  
 Delta R.T.: 0.000 min  
 Response: 14683789  
 Conc: 51.70 ng/ml m



#25 AR-1248-5

R.T.: 6.708 min  
 Delta R.T.: -0.001 min  
 Response: 3390515  
 Conc: 50.21 ng/ml

Instrument :

ECD\_P

ClientSampleId :

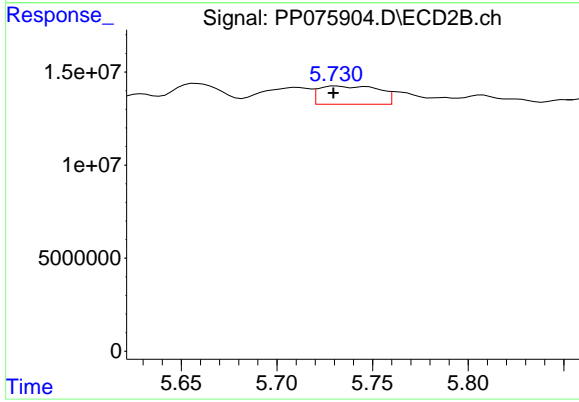
AR1248ICC050

**Manual Integrations**

**APPROVED**

Reviewed By :Yogesh Patel 10/22/2025

Supervised By :mohammad ahmed 10/25/2025



#25 AR-1248-5

R.T.: 5.730 min  
 Delta R.T.: 0.000 min  
 Response: 20852592  
 Conc: 38.78 ng/ml m