

Data Path : Z:\pestpcbsrv\HPCHEM1\ECD_P\Data\PP102125\
 Data File : PP075910.D
 Signal(s) : Signal #1: ECD1A.ch Signal #2: ECD2B.ch
 Acq On : 21 Oct 2025 15:40
 Operator : YP\AJ
 Sample : AR1262ICC500
 Misc :
 ALS Vial : 25 Sample Multiplier: 1

Instrument :
 ECD_P
 ClientSampleId :
 AR1262ICC500

Integration File signal 1: autoint1.e
 Integration File signal 2: autoint2.e
 Quant Time: Oct 21 16:21:11 2025
 Quant Method : Z:\pestpcbsrv\HPCHEM1\ECD_P\methods\PP102125.M
 Quant Title : GC EXTRACTABLES
 QLast Update : Tue Oct 21 16:20:51 2025
 Response via : Initial Calibration
 Integrator: ChemStation

Volume Inj. : 2 µl
 Signal #1 Phase : ZB-MR1 Signal #2 Phase: ZB-MR2
 Signal #1 Info : 30Mx0.32mmx 0.50µ Signal #2 Info : 30M x 0.32mm x 0.25µm

Compound	RT#1	RT#2	Resp#1	Resp#2	ng/ml	ng/ml

System Monitoring Compounds						
1) SA Tetrachlo...	4.647	3.785	76058633	352.0E6	50.000	50.000
2) SA Decachlor...	10.425	8.786	61011705	448.1E6	50.000	50.000
Target Compounds						
36) L8 AR-1262-1	8.232	6.893	42013007	493.5E6	500.000	500.000
37) L8 AR-1262-2	8.557	7.150	81834582	351.6E6	500.000	500.000
38) L8 AR-1262-3	8.883	7.672	60893486	303.5E6	500.000	500.000
39) L8 AR-1262-4	8.971	7.736	46055772	550.7E6	500.000	500.000
40) L8 AR-1262-5	9.642	8.231	33912301	230.7E6	500.000	500.000

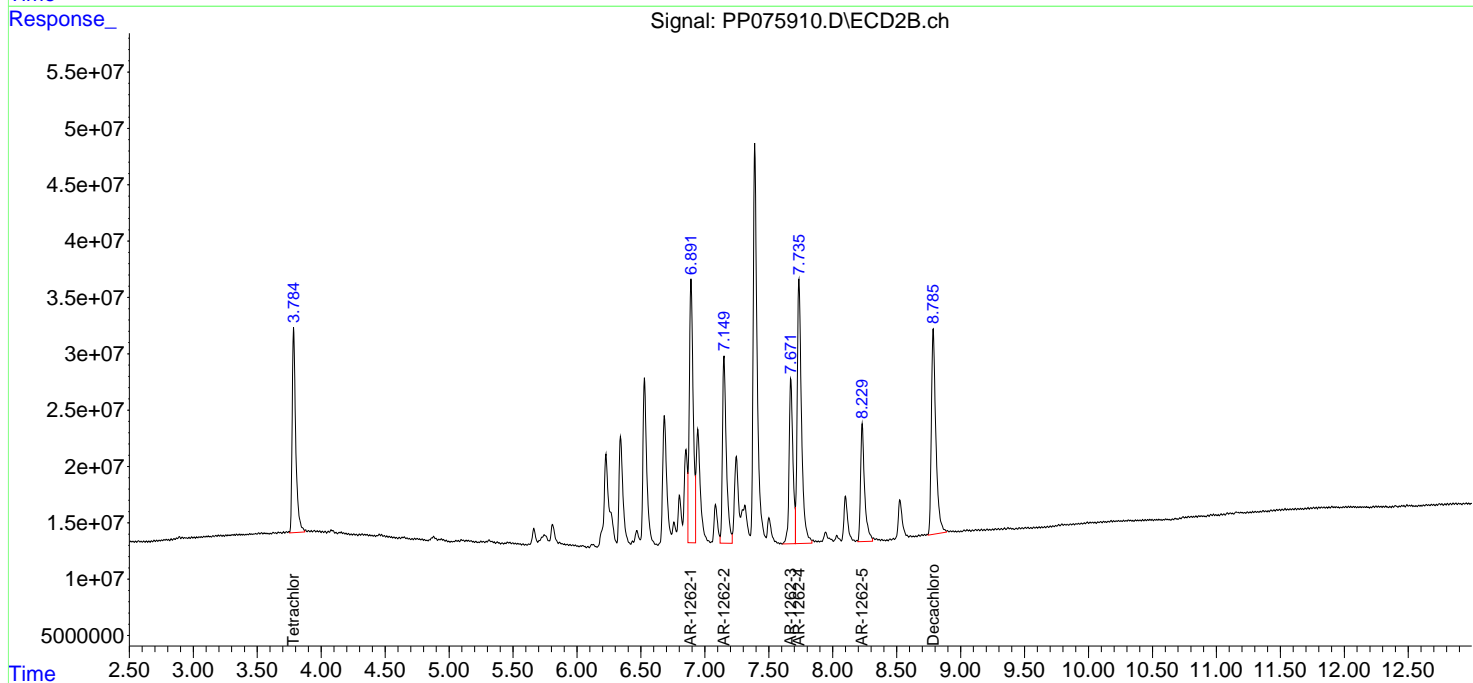
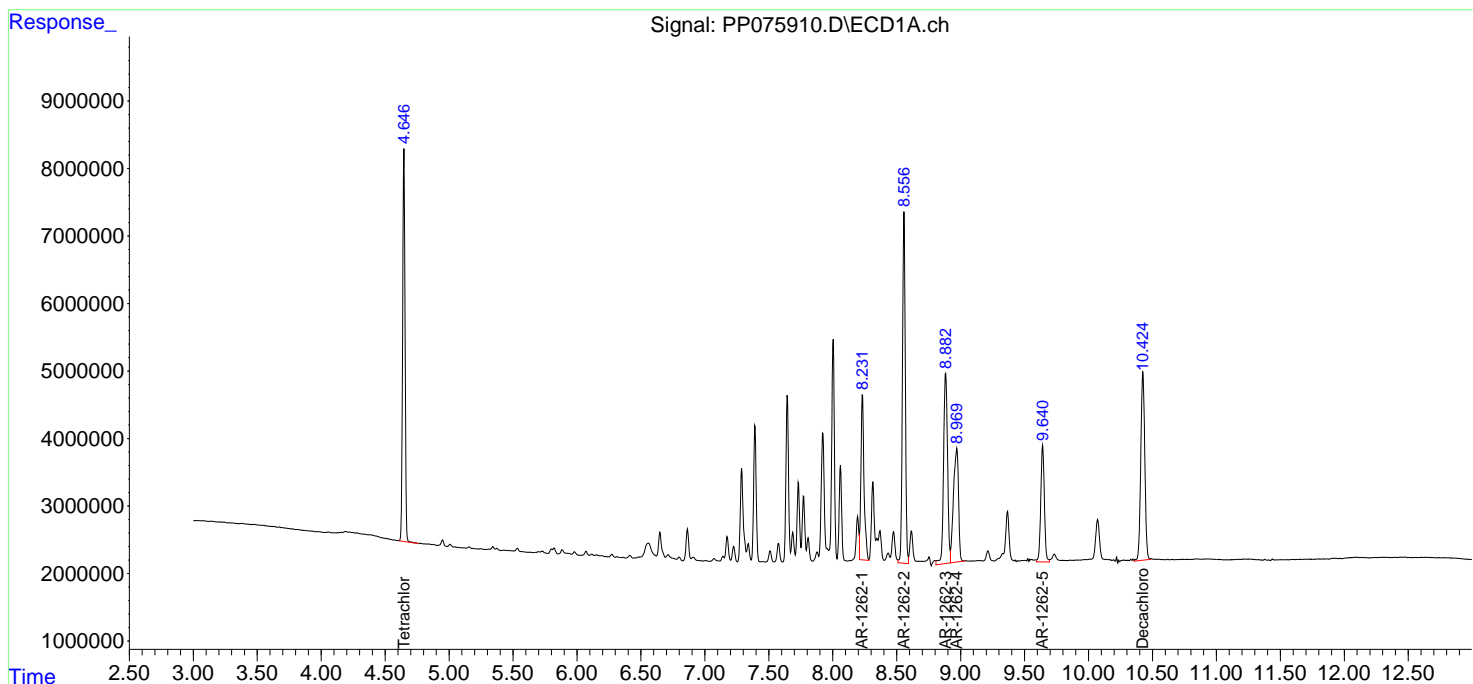
(f)=RT Delta > 1/2 Window (#)=Amounts differ by > 25% (m)=manual int.

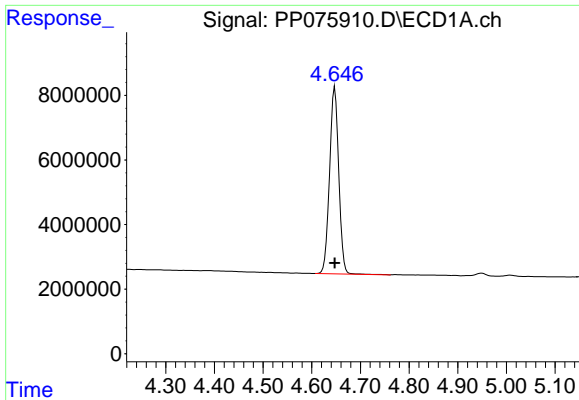
Data Path : Z:\pestpcbsrv\HPCHEM1\ECD_P\Data\PP102125\
 Data File : PP075910.D
 Signal(s) : Signal #1: ECD1A.ch Signal #2: ECD2B.ch
 Acq On : 21 Oct 2025 15:40
 Operator : YP\AJ
 Sample : AR1262ICC500
 Misc :
 ALS Vial : 25 Sample Multiplier: 1

Instrument :
 ECD_P
 ClientSampleId :
 AR1262ICC500

Integration File signal 1: autoint1.e
 Integration File signal 2: autoint2.e
 Quant Time: Oct 21 16:21:11 2025
 Quant Method : Z:\pestpcbsrv\HPCHEM1\ECD_P\methods\PP102125.M
 Quant Title : GC EXTRACTABLES
 QLast Update : Tue Oct 21 16:20:51 2025
 Response via : Initial Calibration
 Integrator: ChemStation

Volume Inj. : 2 µl
 Signal #1 Phase : ZB-MR1 Signal #2 Phase: ZB-MR2
 Signal #1 Info : 30Mx0.32mmx 0.50µ Signal #2 Info : 30M x 0.32mm x 0.25µm

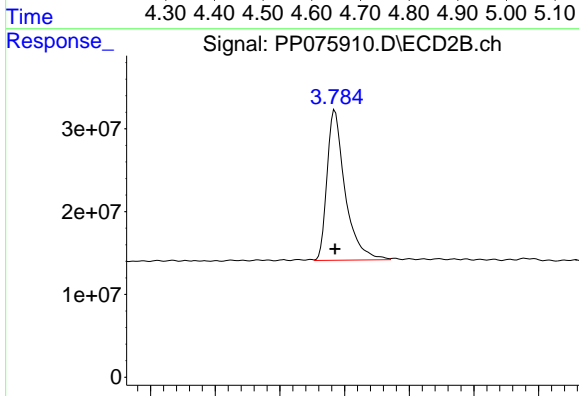




#1 Tetrachloro-m-xylene

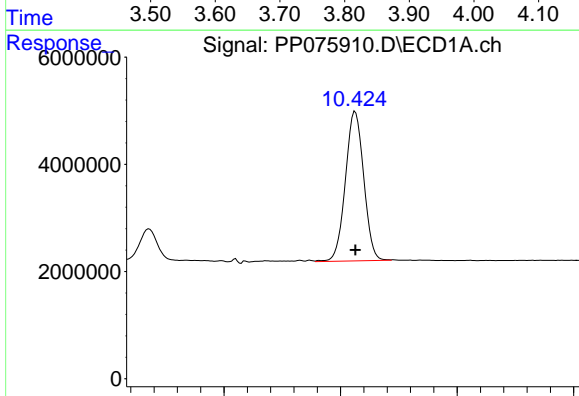
R.T.: 4.647 min
 Delta R.T.: 0.000 min
 Response: 76058633
 Conc: 50.00 ng/ml

Instrument :
 ECD_P
 ClientSampleId :
 AR1262ICC500



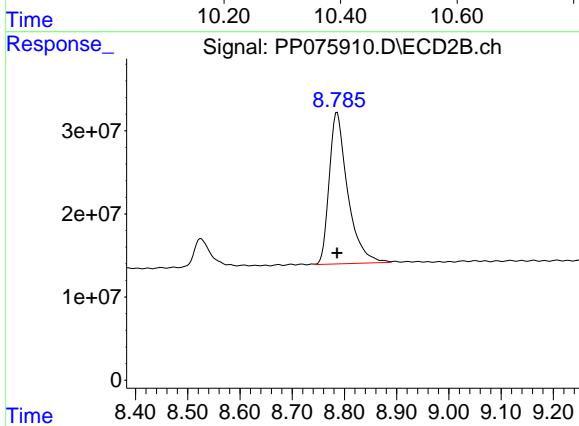
#1 Tetrachloro-m-xylene

R.T.: 3.785 min
 Delta R.T.: 0.000 min
 Response: 352032455
 Conc: 50.00 ng/ml



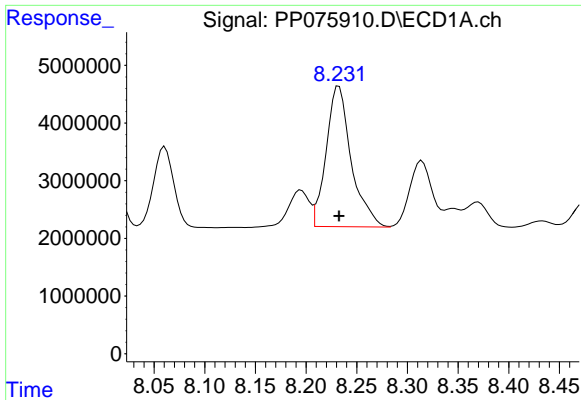
#2 Decachlorobiphenyl

R.T.: 10.425 min
 Delta R.T.: 0.000 min
 Response: 61011705
 Conc: 50.00 ng/ml



#2 Decachlorobiphenyl

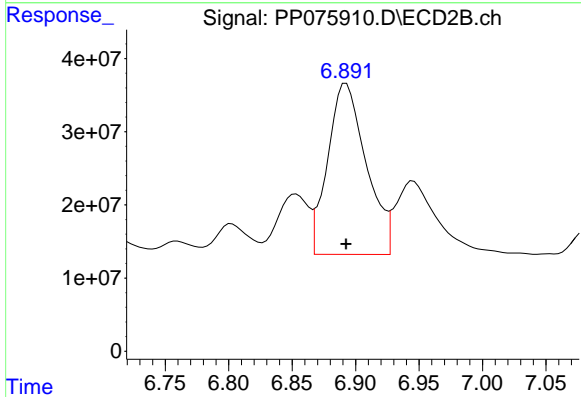
R.T.: 8.786 min
 Delta R.T.: 0.000 min
 Response: 448136268
 Conc: 50.00 ng/ml



#36 AR-1262-1

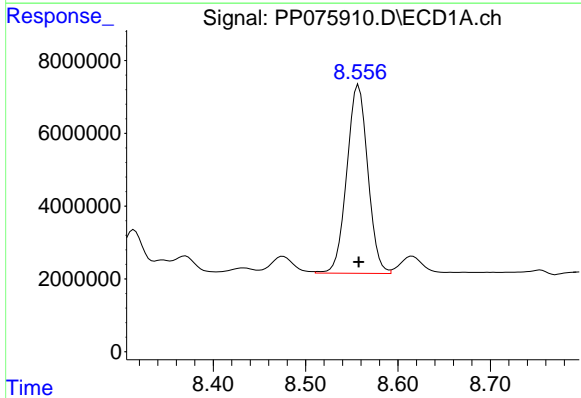
R.T.: 8.232 min
 Delta R.T.: 0.000 min
 Response: 42013007
 Conc: 500.00 ng/ml

Instrument :
 ECD_P
 ClientSampleId :
 AR1262ICC500



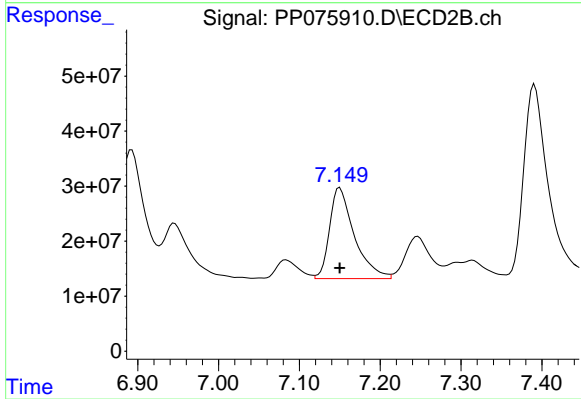
#36 AR-1262-1

R.T.: 6.893 min
 Delta R.T.: 0.000 min
 Response: 493476067
 Conc: 500.00 ng/ml



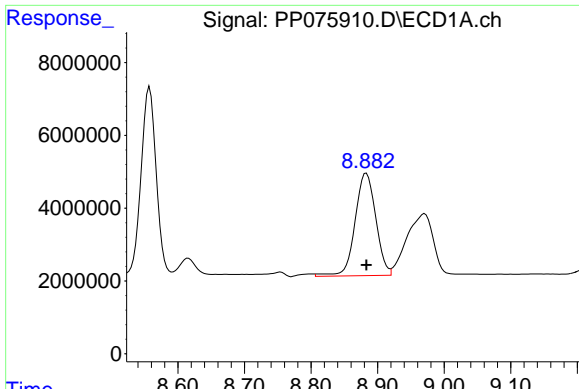
#37 AR-1262-2

R.T.: 8.557 min
 Delta R.T.: 0.000 min
 Response: 81834582
 Conc: 500.00 ng/ml



#37 AR-1262-2

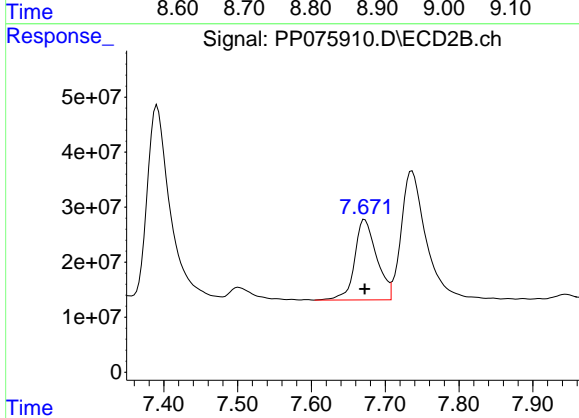
R.T.: 7.150 min
 Delta R.T.: 0.000 min
 Response: 351603586
 Conc: 500.00 ng/ml



#38 AR-1262-3

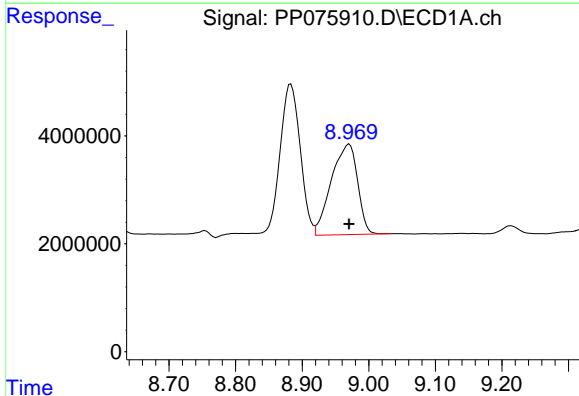
R.T.: 8.883 min
Delta R.T.: 0.000 min
Response: 60893486
Conc: 500.00 ng/ml

Instrument :
ECD_P
ClientSampleId :
AR1262ICC500



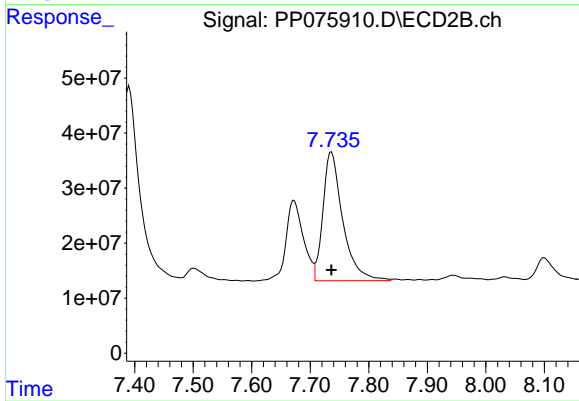
#38 AR-1262-3

R.T.: 7.672 min
Delta R.T.: 0.000 min
Response: 303480349
Conc: 500.00 ng/ml



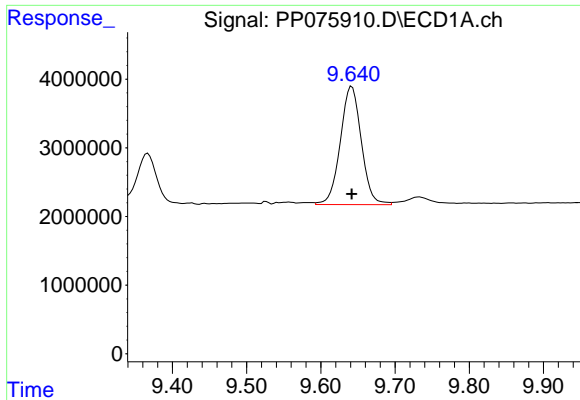
#39 AR-1262-4

R.T.: 8.971 min
Delta R.T.: 0.000 min
Response: 46055772
Conc: 500.00 ng/ml



#39 AR-1262-4

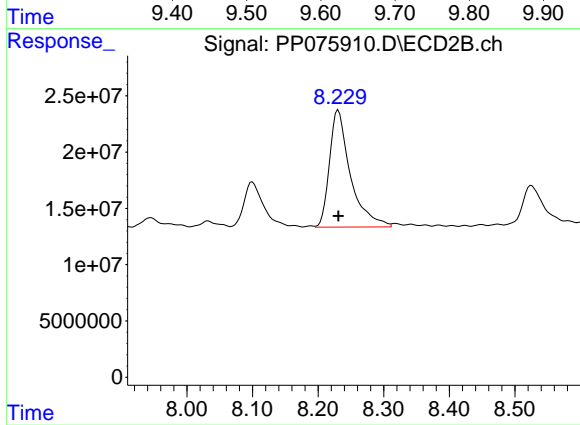
R.T.: 7.736 min
Delta R.T.: 0.000 min
Response: 550668544
Conc: 500.00 ng/ml



#40 AR-1262-5

R.T.: 9.642 min
Delta R.T.: 0.000 min
Response: 33912301
Conc: 500.00 ng/ml

Instrument :
ECD_P
ClientSampleId :
AR1262ICC500



#40 AR-1262-5

R.T.: 8.231 min
Delta R.T.: 0.000 min
Response: 230745763
Conc: 500.00 ng/ml