

Data Path : Z:\pestpcbsrv\HPCHEM1\ECD_Q\Data\PQ101025\
 Data File : PQ070985.D
 Signal(s) : Signal #1: ECD1A.ch Signal #2: ECD2B.ch
 Acq On : 10 Oct 2025 11:51
 Operator : YP\AJ
 Sample : AR1248ICC1000
 Misc :
 ALS Vial : 15 Sample Multiplier: 1

Instrument :
 ECD_Q
 ClientSampleId :
 AR1248ICC1000

Integration File signal 1: autoint1.e
 Integration File signal 2: autoint2.e
 Quant Time: Oct 10 12:40:50 2025
 Quant Method : Z:\pestpcbsrv\HPCHEM1\ECD_Q\Method\PQ101025.M
 Quant Title : GC EXTRACTABLES
 QLast Update : Fri Oct 10 12:37:43 2025
 Response via : Initial Calibration
 Integrator: ChemStation

Volume Inj. : 2 µl
 Signal #1 Phase : ZB-MR1 Signal #2 Phase: ZB-MR2
 Signal #1 Info : 30Mx0.32mmx 0.50µ Signal #2 Info : 30M x 0.32mm x 0.25µm

Compound	RT#1	RT#2	Resp#1	Resp#2	ng/ml	ng/ml

System Monitoring Compounds						
1) SA Tetrachlo...	3.400	2.778	454.7E6	549.9E6	97.923	98.007
2) SA Decachlor...	8.496	7.534	317.7E6	535.7E6	96.574	96.631
Target Compounds						
21) L5 AR-1248-1	4.480	3.778	89951061	118.1E6	950.710	962.148
22) L5 AR-1248-2	4.743	4.002	126.8E6	173.0E6	954.654	954.823
23) L5 AR-1248-3	4.930	4.039	153.0E6	167.6E6	958.744	969.281
24) L5 AR-1248-4	5.318	4.197	167.1E6	207.4E6	954.987	947.004
25) L5 AR-1248-5	5.353	4.572	163.7E6	211.1E6	1106.316	928.819

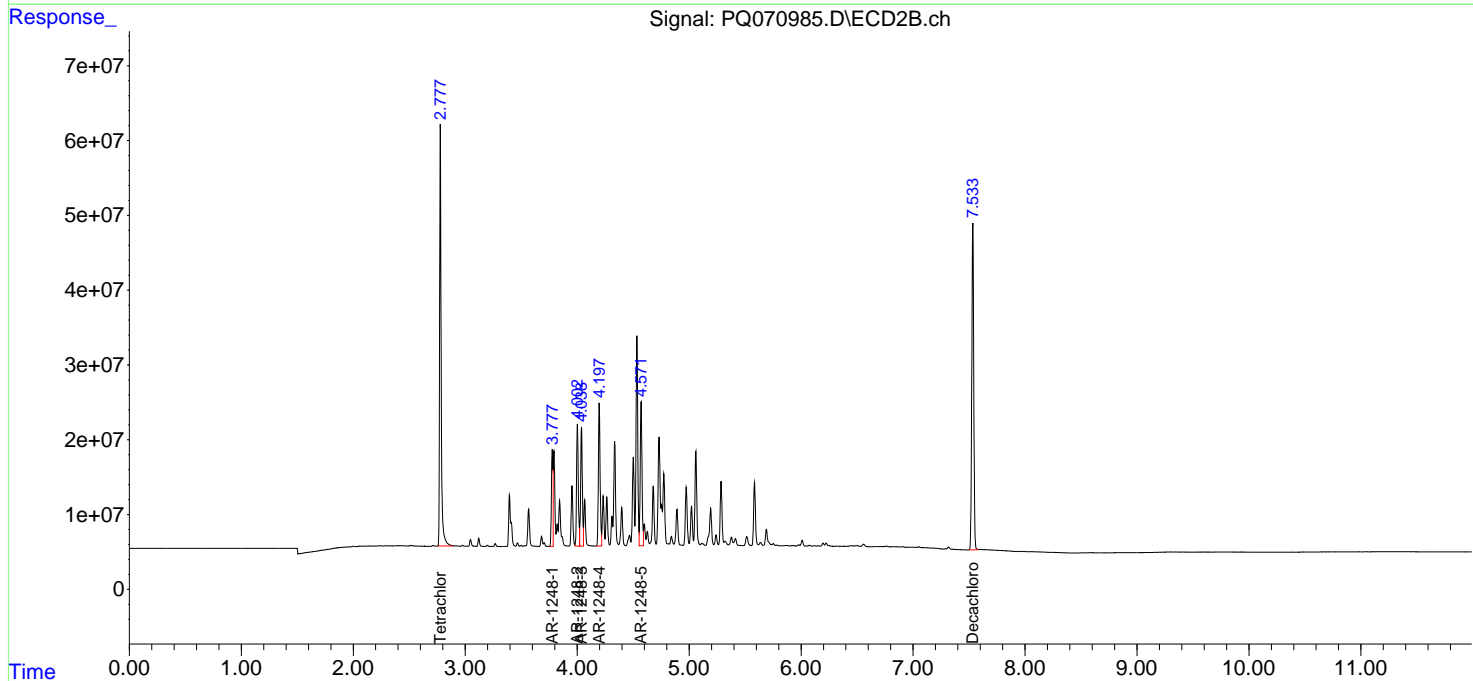
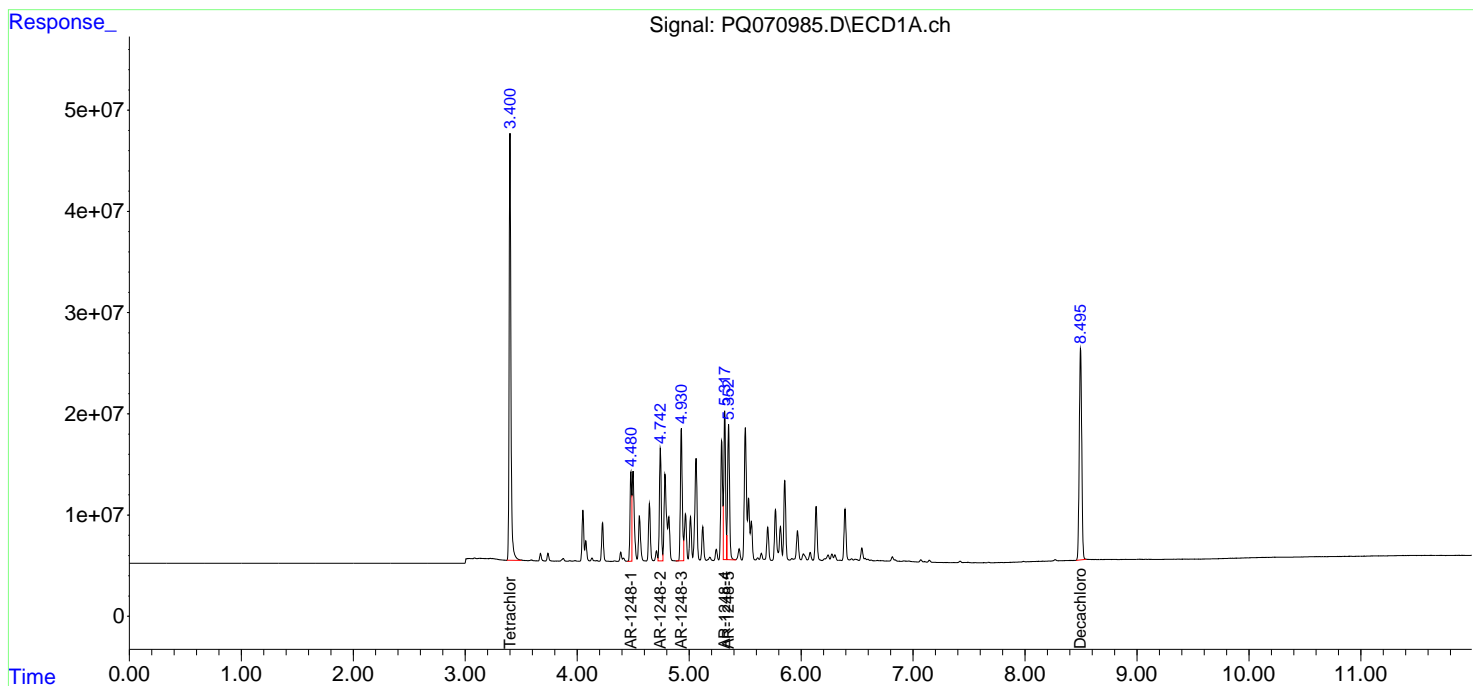
(f)=RT Delta > 1/2 Window (#)=Amounts differ by > 25% (m)=manual int.

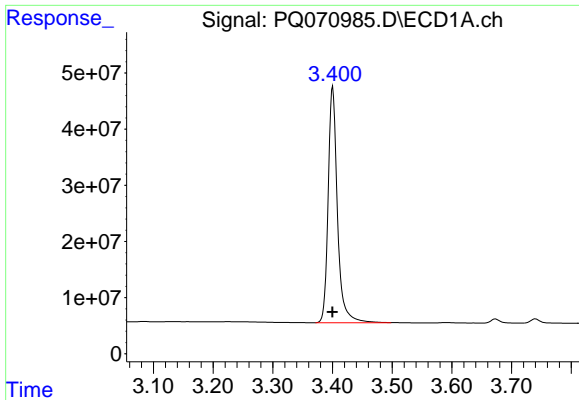
Data Path : Z:\pestpcbsrv\HPCHEM1\ECD_Q\Data\PQ101025\
 Data File : PQ070985.D
 Signal(s) : Signal #1: ECD1A.ch Signal #2: ECD2B.ch
 Acq On : 10 Oct 2025 11:51
 Operator : YP\AJ
 Sample : AR1248ICC1000
 Misc :
 ALS Vial : 15 Sample Multiplier: 1

Instrument :
 ECD_Q
 ClientSampleId :
 AR1248ICC1000

Integration File signal 1: autoint1.e
 Integration File signal 2: autoint2.e
 Quant Time: Oct 10 12:40:50 2025
 Quant Method : Z:\pestpcbsrv\HPCHEM1\ECD_Q\Method\PQ101025.M
 Quant Title : GC EXTRACTABLES
 QLast Update : Fri Oct 10 12:37:43 2025
 Response via : Initial Calibration
 Integrator: ChemStation

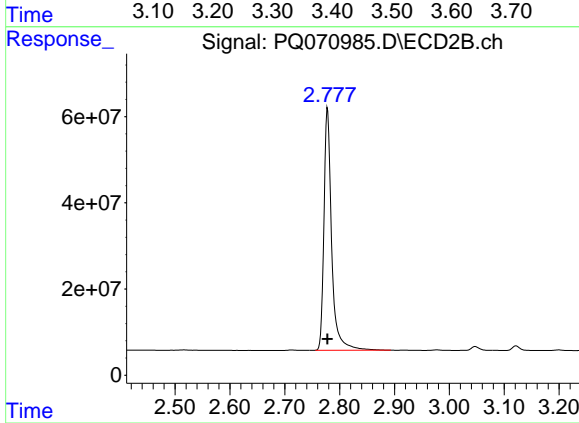
Volume Inj. : 2 µl
 Signal #1 Phase : ZB-MR1 Signal #2 Phase: ZB-MR2
 Signal #1 Info : 30Mx0.32mmx 0.50µ Signal #2 Info : 30M x 0.32mm x 0.25µm



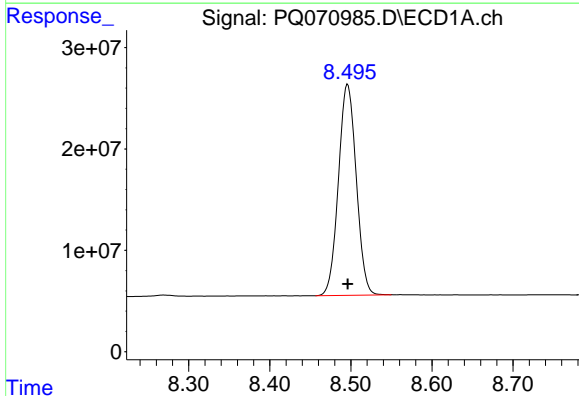


#1 Tetrachloro-m-xylene
R.T.: 3.400 min
Delta R.T.: 0.000 min
Response: 454650898
Conc: 97.92 ng/ml

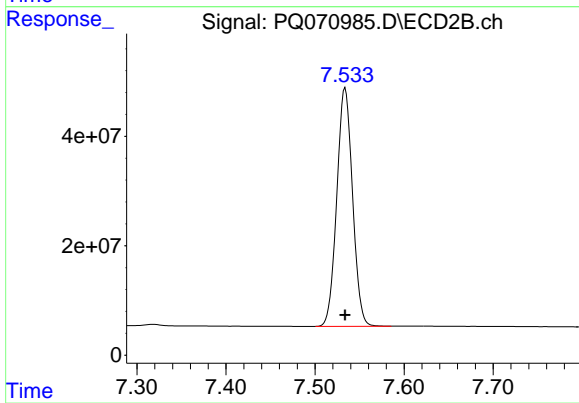
Instrument :
ECD_Q
ClientSampleId :
AR1248ICC1000



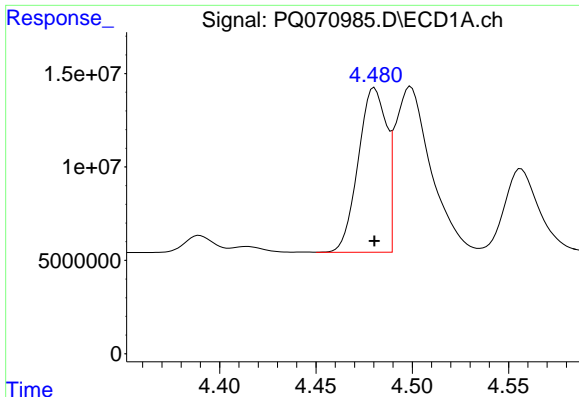
#1 Tetrachloro-m-xylene
R.T.: 2.778 min
Delta R.T.: 0.000 min
Response: 549926827
Conc: 98.01 ng/ml



#2 Decachlorobiphenyl
R.T.: 8.496 min
Delta R.T.: 0.000 min
Response: 317734844
Conc: 96.57 ng/ml



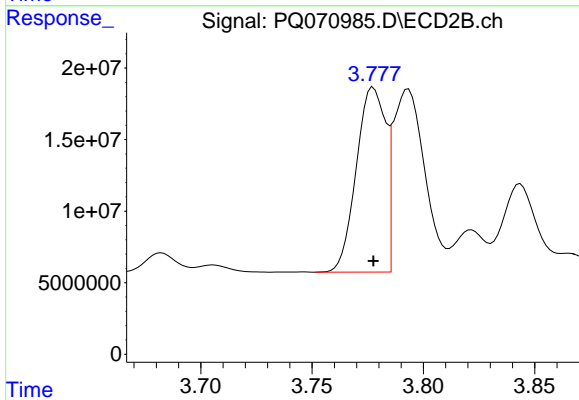
#2 Decachlorobiphenyl
R.T.: 7.534 min
Delta R.T.: 0.000 min
Response: 535728433
Conc: 96.63 ng/ml



#21 AR-1248-1

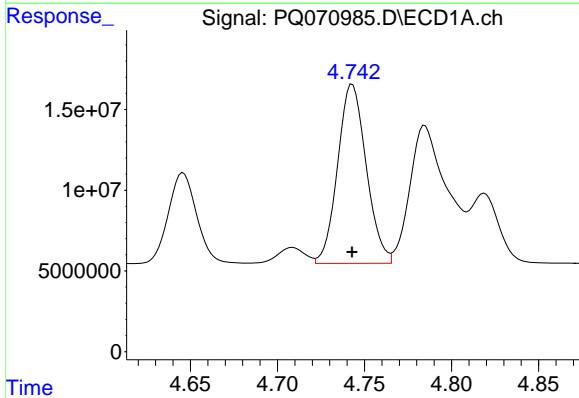
R.T.: 4.480 min
 Delta R.T.: 0.000 min
 Response: 89951061
 Conc: 950.71 ng/ml

Instrument :
 ECD_Q
 ClientSampleId :
 AR1248ICC1000



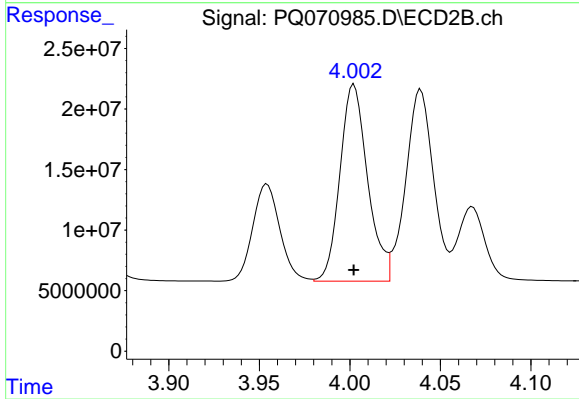
#21 AR-1248-1

R.T.: 3.778 min
 Delta R.T.: 0.000 min
 Response: 118147108
 Conc: 962.15 ng/ml



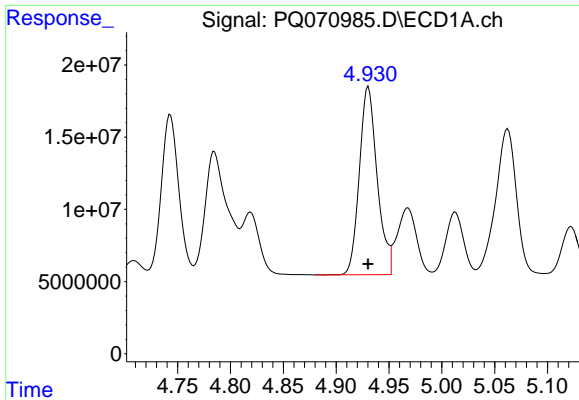
#22 AR-1248-2

R.T.: 4.743 min
 Delta R.T.: 0.000 min
 Response: 126849870
 Conc: 954.65 ng/ml



#22 AR-1248-2

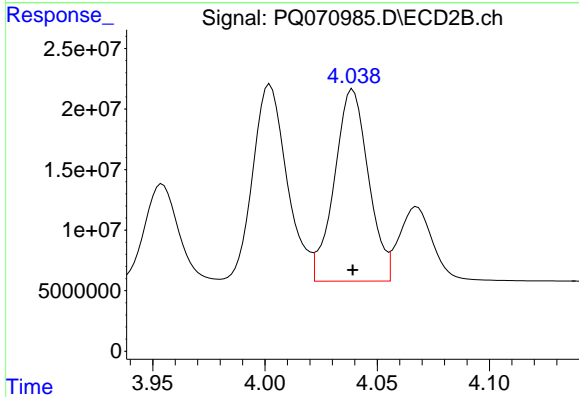
R.T.: 4.002 min
 Delta R.T.: 0.000 min
 Response: 172958749
 Conc: 954.82 ng/ml



#23 AR-1248-3

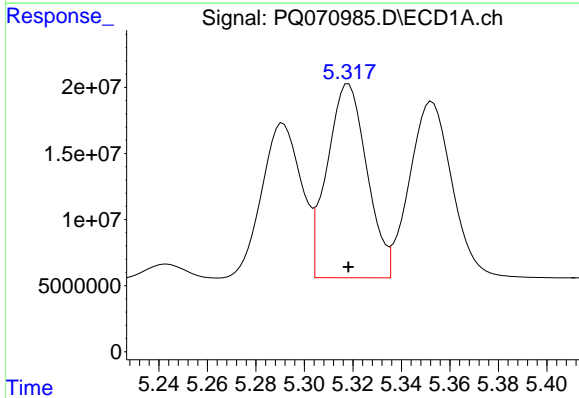
R.T.: 4.930 min
 Delta R.T.: 0.000 min
 Response: 152980867
 Conc: 958.74 ng/ml

Instrument :
 ECD_Q
 ClientSampleId :
 AR1248ICC1000



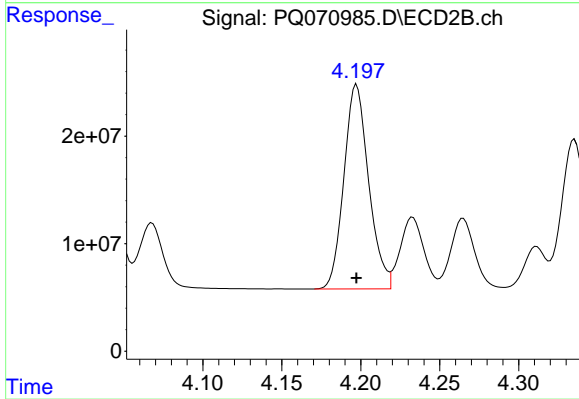
#23 AR-1248-3

R.T.: 4.039 min
 Delta R.T.: 0.000 min
 Response: 167593672
 Conc: 969.28 ng/ml



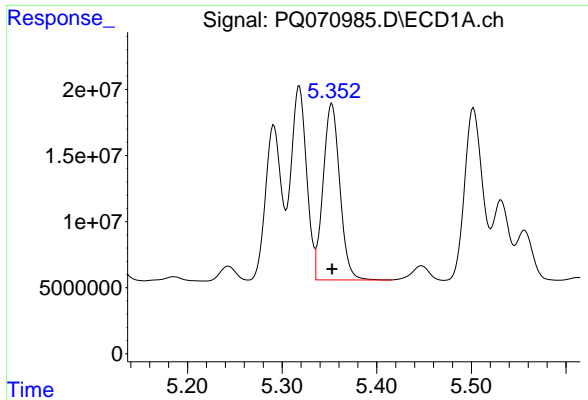
#24 AR-1248-4

R.T.: 5.318 min
 Delta R.T.: 0.000 min
 Response: 167077290
 Conc: 954.99 ng/ml



#24 AR-1248-4

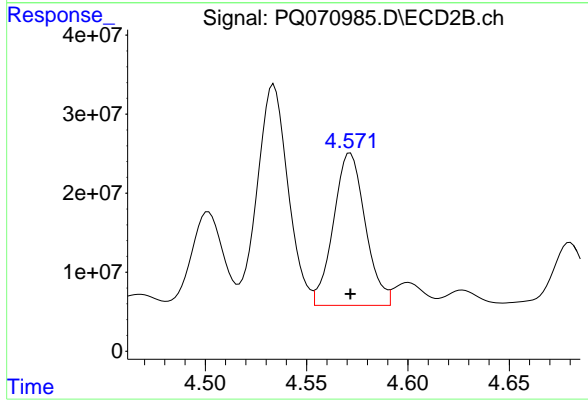
R.T.: 4.197 min
 Delta R.T.: 0.000 min
 Response: 207432918
 Conc: 947.00 ng/ml



#25 AR-1248-5

R.T.: 5.353 min
 Delta R.T.: 0.000 min
 Response: 163667698
 Conc: 1106.32 ng/m

Instrument :
 ECD_Q
 ClientSampleId :
 AR1248ICC1000



#25 AR-1248-5

R.T.: 4.572 min
 Delta R.T.: 0.000 min
 Response: 211078475
 Conc: 928.82 ng/ml