

Data Path : Z:\pestpcbsrv\HPCHEM1\ECD_Q\Data\PQ101025\
 Data File : PQ070992.D
 Signal(s) : Signal #1: ECD1A.ch Signal #2: ECD2B.ch
 Acq On : 10 Oct 2025 13:33
 Operator : YP\AJ
 Sample : AR1254ICC500
 Misc :
 ALS Vial : 22 Sample Multiplier: 1

Instrument :
 ECD_Q
 ClientSampleId :
 AR1254ICC500

Integration File signal 1: autoint1.e
 Integration File signal 2: autoint2.e
 Quant Time: Oct 10 14:49:59 2025
 Quant Method : Z:\pestpcbsrv\HPCHEM1\ECD_Q\Method\PQ101025.M
 Quant Title : GC EXTRACTABLES
 QLast Update : Fri Oct 10 14:49:02 2025
 Response via : Initial Calibration
 Integrator: ChemStation

Volume Inj. : 2 µl
 Signal #1 Phase : ZB-MR1 Signal #2 Phase: ZB-MR2
 Signal #1 Info : 30Mx0.32mmx 0.50µ Signal #2 Info : 30M x 0.32mm x 0.25µm

Compound	RT#1	RT#2	Resp#1	Resp#2	ng/ml	ng/ml

System Monitoring Compounds						
1) SA Tetrachlo...	3.400	2.778	230.2E6	274.2E6	50.000	50.000
2) SA Decachlor...	8.497	7.534	165.0E6	285.8E6	50.000	50.000
Target Compounds						
26) L6 AR-1254-1	5.293	4.532	100.2E6	172.8E6	500.000	500.000
27) L6 AR-1254-2	5.507	4.680	150.3E6	152.4E6	500.000	500.000
28) L6 AR-1254-3	5.855	5.060	159.3E6	242.3E6	500.000	500.000
29) L6 AR-1254-4	6.136	5.286	114.9E6	154.3E6	500.000	500.000
30) L6 AR-1254-5	6.543	5.689	121.3E6	219.7E6	500.000	500.000

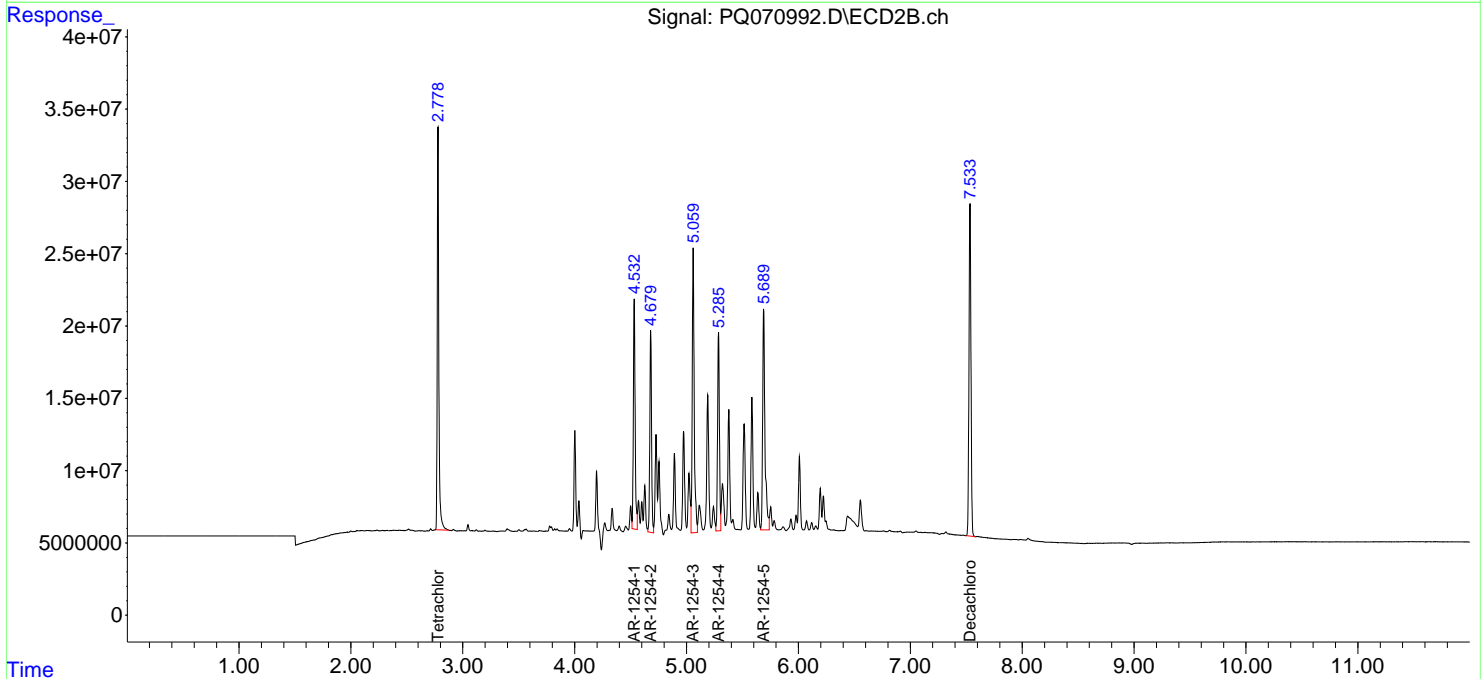
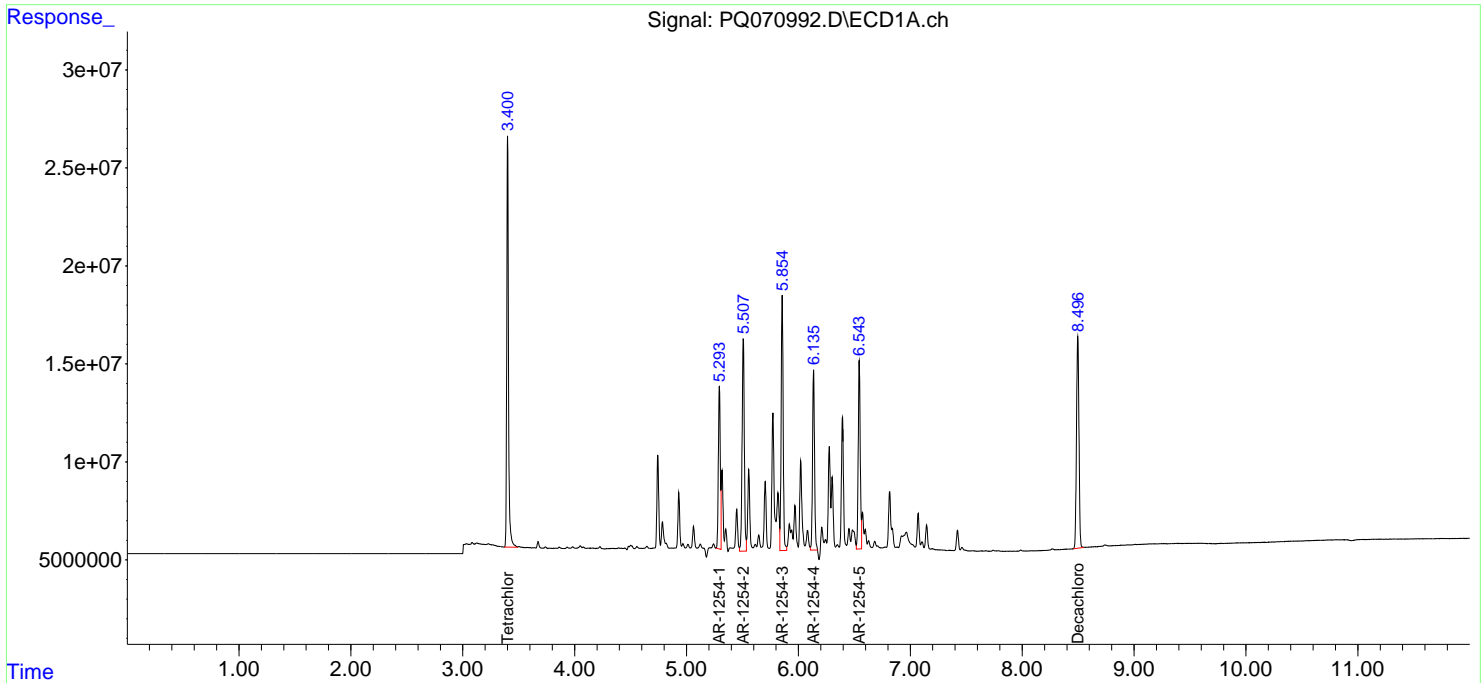
(f)=RT Delta > 1/2 Window (#)=Amounts differ by > 25% (m)=manual int.

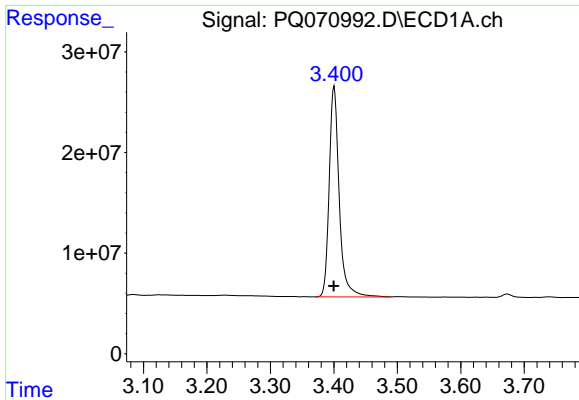
Data Path : Z:\pestpcbsrv\HPCHEM1\ECD_Q\Data\PQ101025\
 Data File : PQ070992.D
 Signal(s) : Signal #1: ECD1A.ch Signal #2: ECD2B.ch
 Acq On : 10 Oct 2025 13:33
 Operator : YP\AJ
 Sample : AR1254ICC500
 Misc :
 ALS Vial : 22 Sample Multiplier: 1

Instrument :
 ECD_Q
 ClientSampleId :
 AR1254ICC500

Integration File signal 1: autoint1.e
 Integration File signal 2: autoint2.e
 Quant Time: Oct 10 14:49:59 2025
 Quant Method : Z:\pestpcbsrv\HPCHEM1\ECD_Q\Method\PQ101025.M
 Quant Title : GC EXTRACTABLES
 QLast Update : Fri Oct 10 14:49:02 2025
 Response via : Initial Calibration
 Integrator: ChemStation

Volume Inj. : 2 µl
 Signal #1 Phase : ZB-MR1 Signal #2 Phase: ZB-MR2
 Signal #1 Info : 30Mx0.32mmx 0.50µ Signal #2 Info : 30M x 0.32mm x 0.25µm

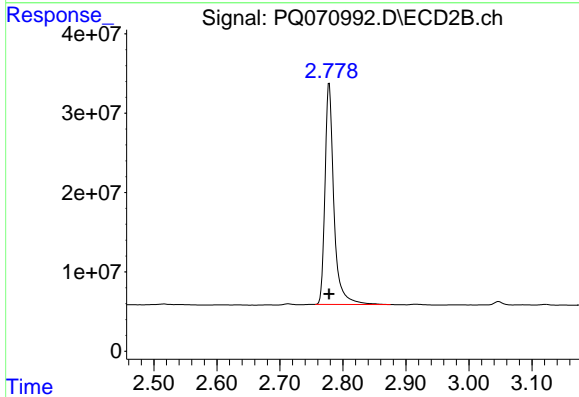




#1 Tetrachloro-m-xylene

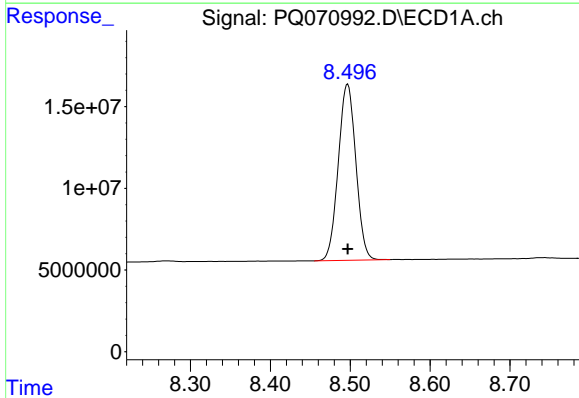
R.T.: 3.400 min
Delta R.T.: 0.000 min
Response: 230224891
Conc: 50.00 ng/ml

Instrument :
ECD_Q
ClientSampleId :
AR1254ICC500



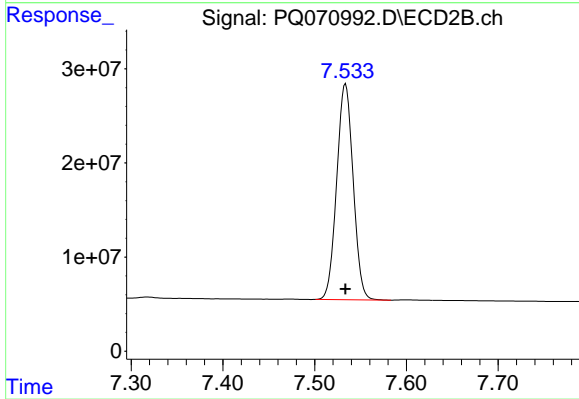
#1 Tetrachloro-m-xylene

R.T.: 2.778 min
Delta R.T.: 0.000 min
Response: 274224468
Conc: 50.00 ng/ml



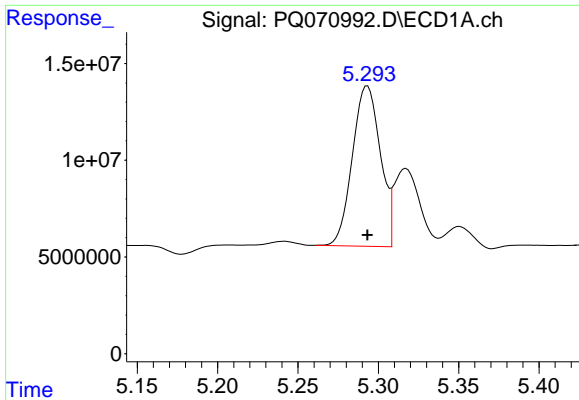
#2 Decachlorobiphenyl

R.T.: 8.497 min
Delta R.T.: 0.000 min
Response: 165005727
Conc: 50.00 ng/ml



#2 Decachlorobiphenyl

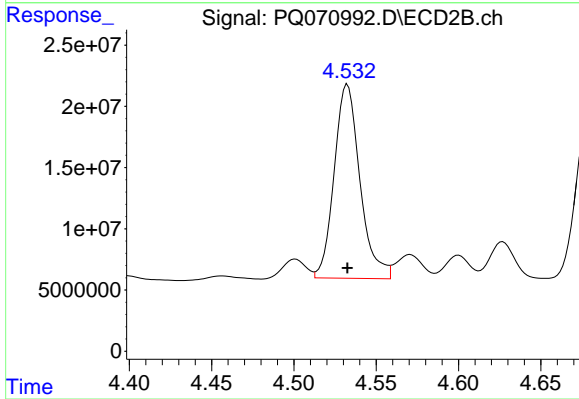
R.T.: 7.534 min
Delta R.T.: 0.000 min
Response: 285844731
Conc: 50.00 ng/ml



#26 AR-1254-1

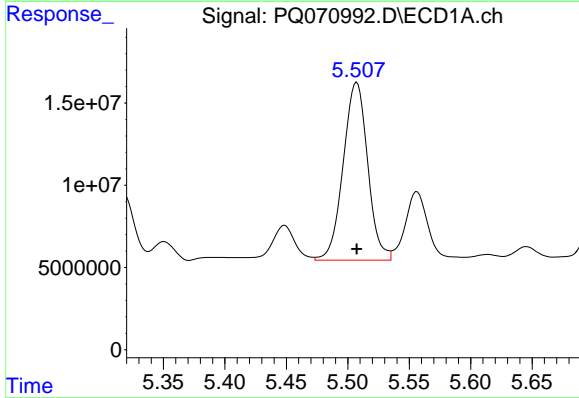
R.T.: 5.293 min
Delta R.T.: 0.000 min
Response: 100154125
Conc: 500.00 ng/ml

Instrument :
ECD_Q
ClientSampleId :
AR1254ICC500



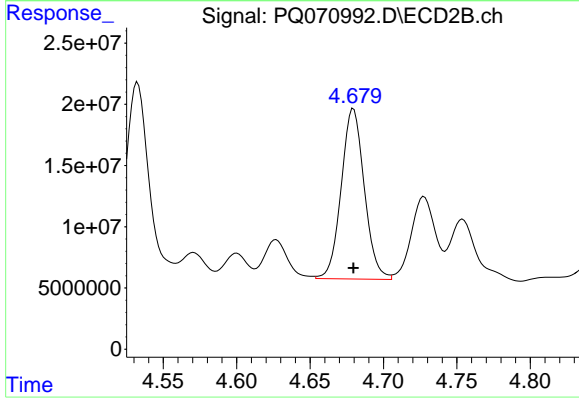
#26 AR-1254-1

R.T.: 4.532 min
Delta R.T.: 0.000 min
Response: 172752640
Conc: 500.00 ng/ml



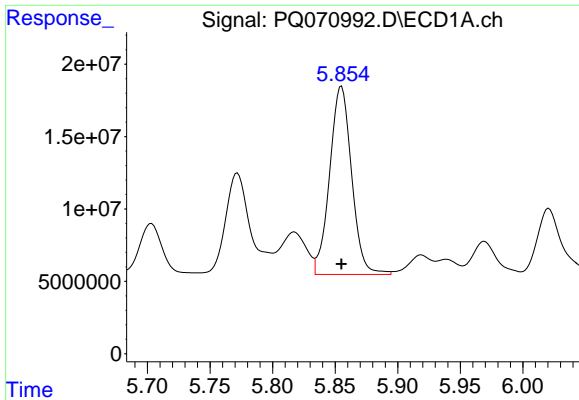
#27 AR-1254-2

R.T.: 5.507 min
Delta R.T.: 0.000 min
Response: 150279116
Conc: 500.00 ng/ml



#27 AR-1254-2

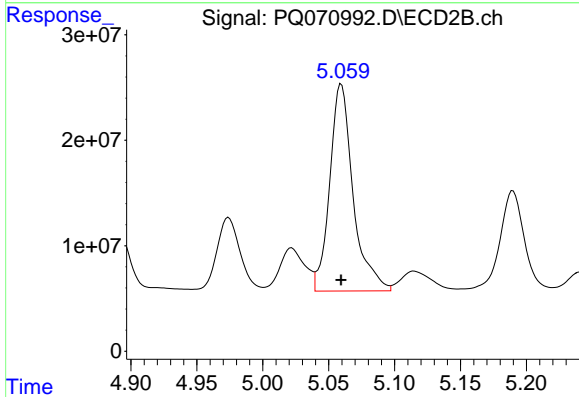
R.T.: 4.680 min
Delta R.T.: 0.000 min
Response: 152424780
Conc: 500.00 ng/ml



#28 AR-1254-3

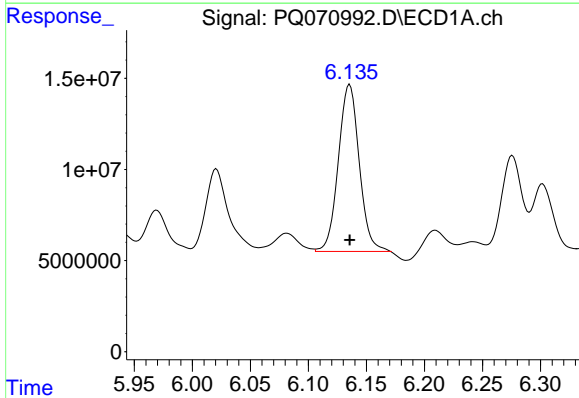
R.T.: 5.855 min
 Delta R.T.: 0.000 min
 Response: 159265361
 Conc: 500.00 ng/ml

Instrument :
 ECD_Q
 ClientSampleId :
 AR1254ICC500



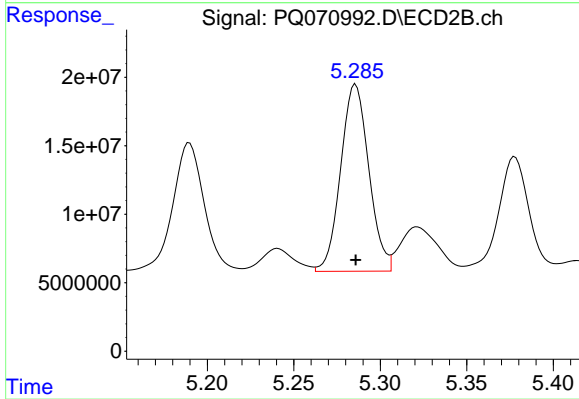
#28 AR-1254-3

R.T.: 5.060 min
 Delta R.T.: 0.000 min
 Response: 242313593
 Conc: 500.00 ng/ml



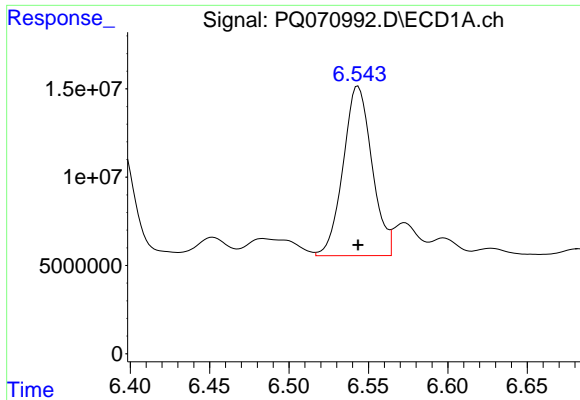
#29 AR-1254-4

R.T.: 6.136 min
 Delta R.T.: 0.000 min
 Response: 114899065
 Conc: 500.00 ng/ml



#29 AR-1254-4

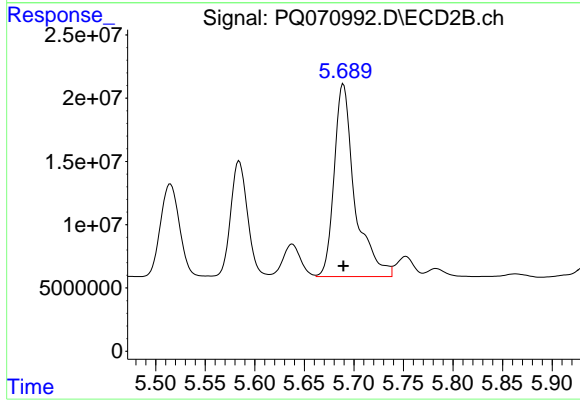
R.T.: 5.286 min
 Delta R.T.: 0.000 min
 Response: 154289356
 Conc: 500.00 ng/ml



#30 AR-1254-5

R.T.: 6.543 min
Delta R.T.: 0.000 min
Response: 121288407
Conc: 500.00 ng/ml

Instrument :
ECD_Q
ClientSampleId :
AR1254ICC500



#30 AR-1254-5

R.T.: 5.689 min
Delta R.T.: 0.000 min
Response: 219747553
Conc: 500.00 ng/ml