

Data Path : Z:\pestpcbsrv\HPCHEM1\ECD_Q\Data\PQ101025\
 Data File : PQ070997.D
 Signal(s) : Signal #1: ECD1A.ch Signal #2: ECD2B.ch
 Acq On : 10 Oct 2025 15:59
 Operator : YP\AJ
 Sample : AR1268ICC750
 Misc :
 ALS Vial : 27 Sample Multiplier: 1

Instrument :
 ECD_Q
 ClientSampleId :
 AR1268ICC750

Integration File signal 1: autoint1.e
 Integration File signal 2: autoint2.e
 Quant Time: Oct 10 16:47:10 2025
 Quant Method : Z:\pestpcbsrv\HPCHEM1\ECD_Q\Method\PQ101025.M
 Quant Title : GC EXTRACTABLES
 QLast Update : Fri Oct 10 16:41:42 2025
 Response via : Initial Calibration
 Integrator: ChemStation

Volume Inj. : 2 µl
 Signal #1 Phase : ZB-MR1 Signal #2 Phase: ZB-MR2
 Signal #1 Info : 30Mx0.32mmx 0.50µ Signal #2 Info : 30M x 0.32mm x 0.25µm

| Compound | RT#1 | RT#2 | Resp#1 | Resp#2 | ng/ml | ng/ml |
|-----------------------------|-------|-------|---------|----------|---------|---------|
| ----- | | | | | | |
| System Monitoring Compounds | | | | | | |
| 1) SA Tetrachlo... | 3.400 | 2.778 | 365.3E6 | 429.7E6 | 75.472 | 75.638 |
| 2) SA Decachlor... | 8.496 | 7.533 | 443.5E6 | 805.2E6 | 75.137 | 75.305 |
| Target Compounds | | | | | | |
| 41) L9 AR-1268-1 | 7.417 | 6.501 | 429.3E6 | 721.3E6 | 752.594 | 754.792 |
| 42) L9 AR-1268-2 | 7.495 | 6.564 | 393.0E6 | 668.4E6 | 751.776 | 756.465 |
| 43) L9 AR-1268-3 | 7.677 | 6.763 | 320.6E6 | 577.3E6 | 751.101 | 754.528 |
| 44) L9 AR-1268-4 | 7.988 | 7.051 | 139.1E6 | 254.6E6 | 752.792 | 752.326 |
| 45) L9 AR-1268-5 | 8.270 | 7.318 | 981.0E6 | 1816.7E6 | 752.199 | 753.877 |
| ----- | | | | | | |

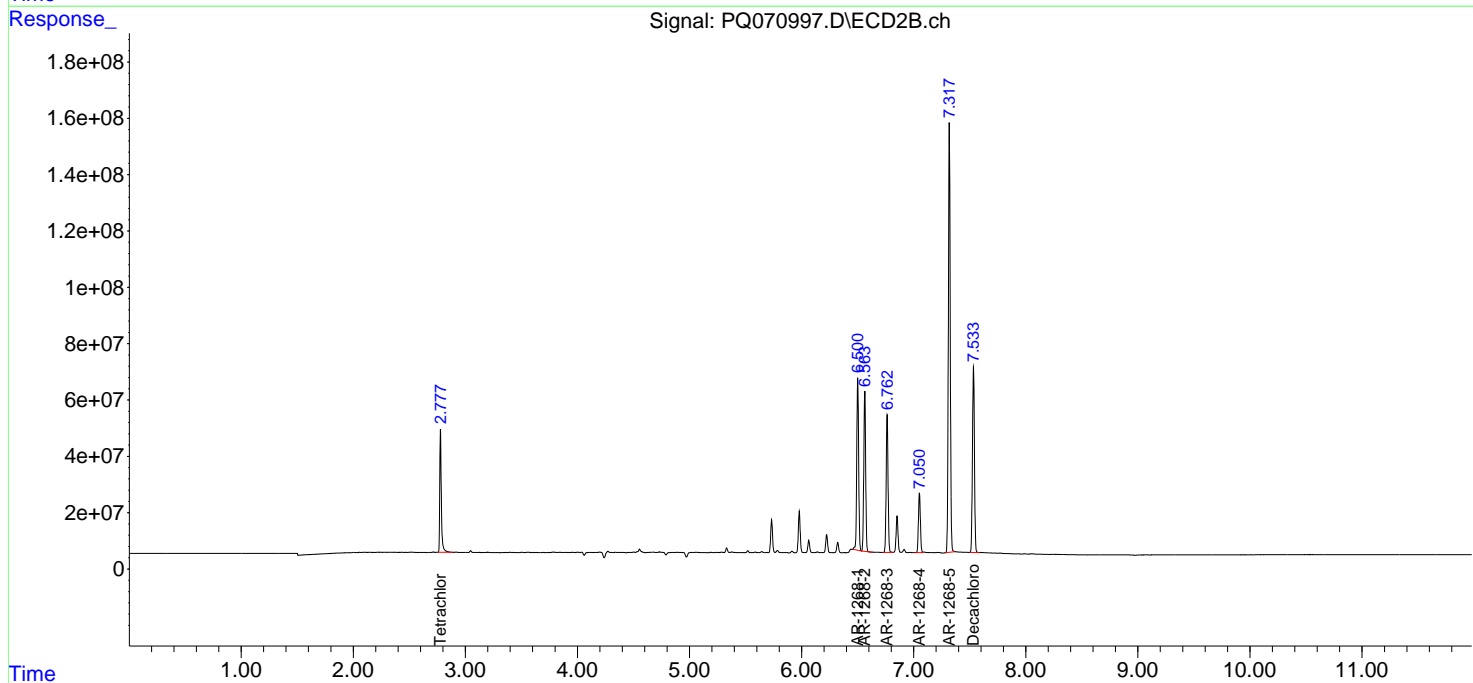
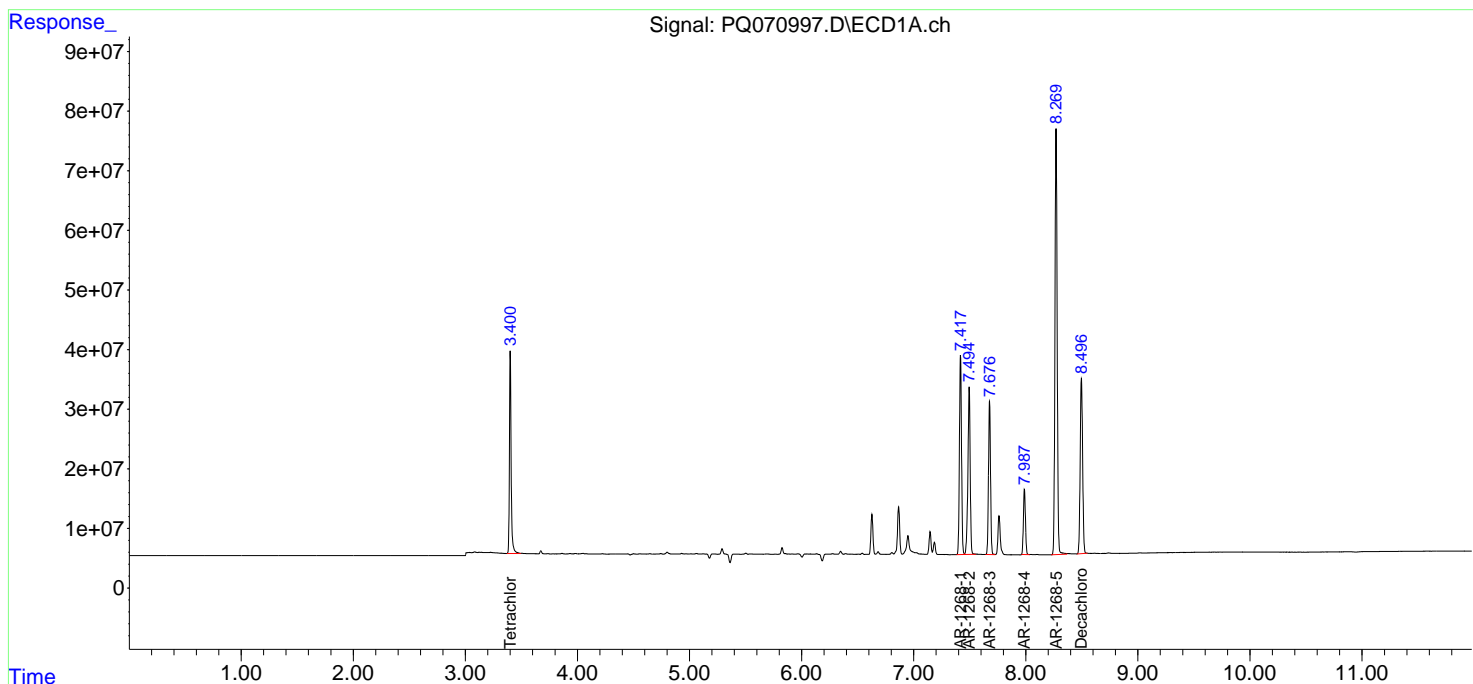
(f)=RT Delta > 1/2 Window (#)=Amounts differ by > 25% (m)=manual int.

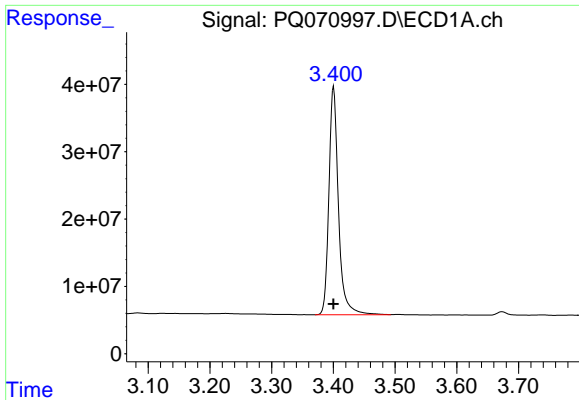
Data Path : Z:\pestpcbsrv\HPCHEM1\ECD_Q\Data\PQ101025\
 Data File : PQ070997.D
 Signal(s) : Signal #1: ECD1A.ch Signal #2: ECD2B.ch
 Acq On : 10 Oct 2025 15:59
 Operator : YP\AJ
 Sample : AR1268ICC750
 Misc :
 ALS Vial : 27 Sample Multiplier: 1

Instrument :
 ECD_Q
 ClientSampleId :
 AR1268ICC750

Integration File signal 1: autoint1.e
 Integration File signal 2: autoint2.e
 Quant Time: Oct 10 16:47:10 2025
 Quant Method : Z:\pestpcbsrv\HPCHEM1\ECD_Q\Method\PQ101025.M
 Quant Title : GC EXTRACTABLES
 QLast Update : Fri Oct 10 16:41:42 2025
 Response via : Initial Calibration
 Integrator: ChemStation

Volume Inj. : 2 µl
 Signal #1 Phase : ZB-MR1 Signal #2 Phase: ZB-MR2
 Signal #1 Info : 30Mx0.32mmx 0.50µ Signal #2 Info : 30M x 0.32mm x 0.25µm

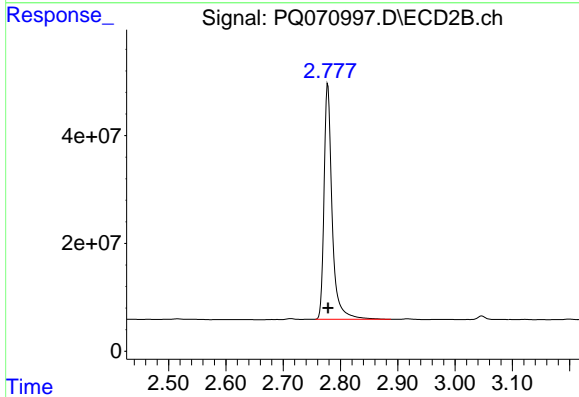




#1 Tetrachloro-m-xylene

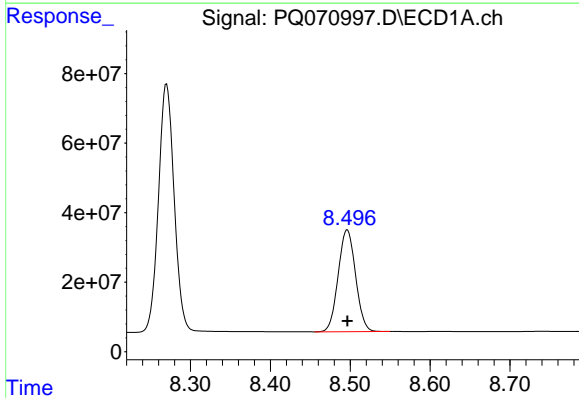
R.T.: 3.400 min
 Delta R.T.: 0.000 min
 Response: 365345228
 Conc: 75.47 ng/ml

Instrument :
 ECD_Q
 ClientSampleId :
 AR1268ICC750



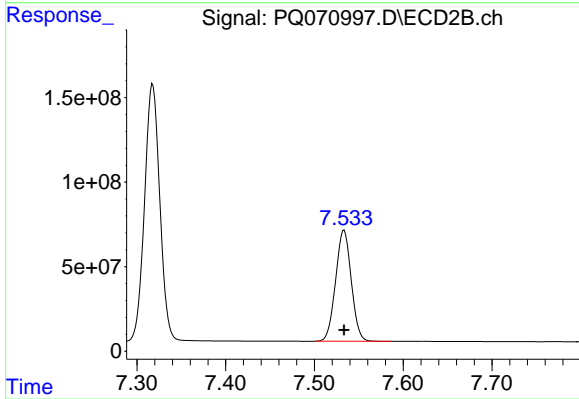
#1 Tetrachloro-m-xylene

R.T.: 2.778 min
 Delta R.T.: 0.000 min
 Response: 429738765
 Conc: 75.64 ng/ml



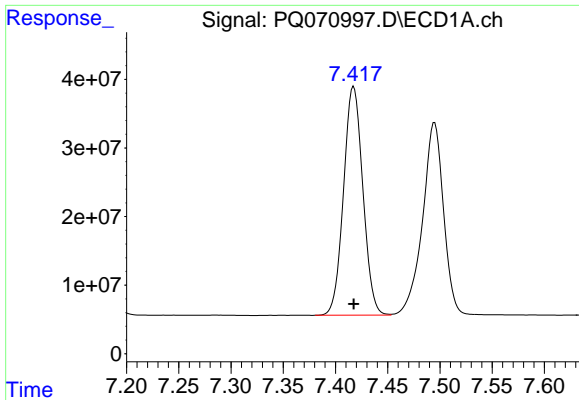
#2 Decachlorobiphenyl

R.T.: 8.496 min
 Delta R.T.: 0.000 min
 Response: 443523459
 Conc: 75.14 ng/ml



#2 Decachlorobiphenyl

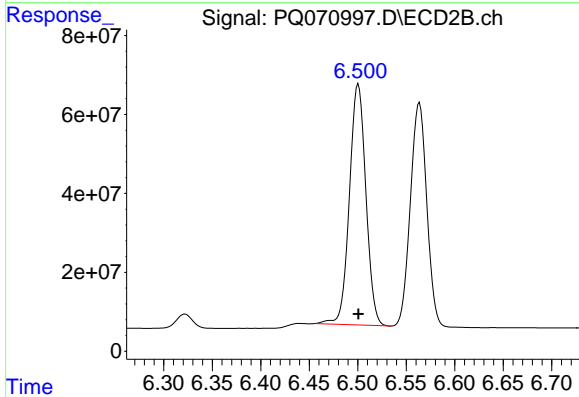
R.T.: 7.533 min
 Delta R.T.: 0.000 min
 Response: 805246413
 Conc: 75.31 ng/ml



#41 AR-1268-1

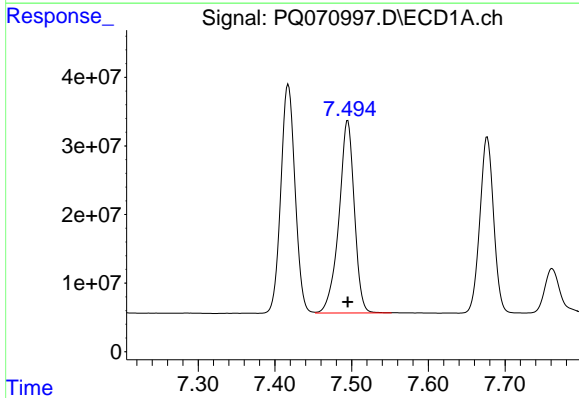
R.T.: 7.417 min
 Delta R.T.: 0.000 min
 Response: 429329141
 Conc: 752.59 ng/ml

Instrument :
 ECD_Q
 ClientSampleId :
 AR1268ICC750



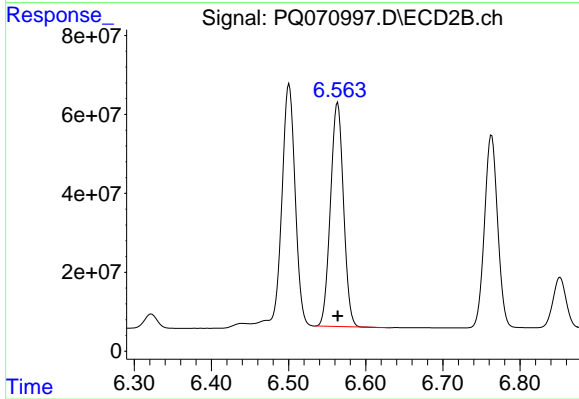
#41 AR-1268-1

R.T.: 6.501 min
 Delta R.T.: 0.000 min
 Response: 721284734
 Conc: 754.79 ng/ml



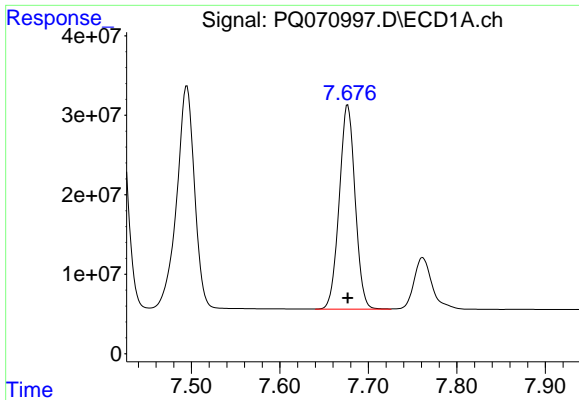
#42 AR-1268-2

R.T.: 7.495 min
 Delta R.T.: 0.000 min
 Response: 393043003
 Conc: 751.78 ng/ml



#42 AR-1268-2

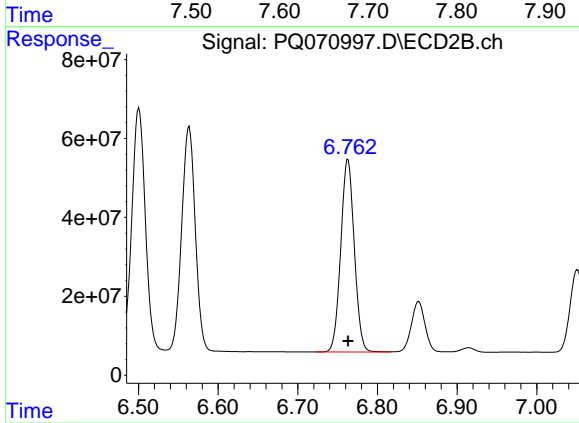
R.T.: 6.564 min
 Delta R.T.: 0.000 min
 Response: 668369020
 Conc: 756.47 ng/ml



#43 AR-1268-3

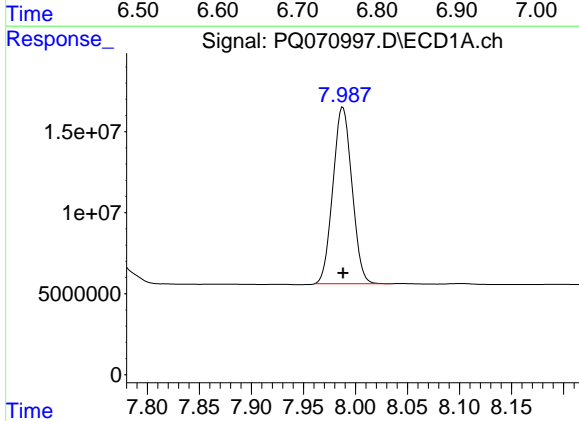
R.T.: 7.677 min
 Delta R.T.: 0.000 min
 Response: 320649152
 Conc: 751.10 ng/ml

Instrument :
 ECD_Q
 ClientSampleId :
 AR1268ICC750



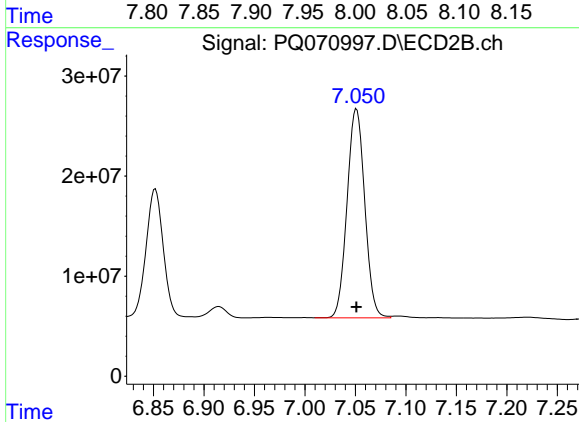
#43 AR-1268-3

R.T.: 6.763 min
 Delta R.T.: 0.000 min
 Response: 577309161
 Conc: 754.53 ng/ml



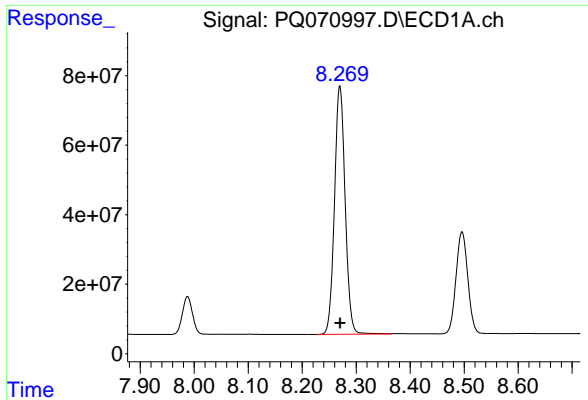
#44 AR-1268-4

R.T.: 7.988 min
 Delta R.T.: 0.000 min
 Response: 139148391
 Conc: 752.79 ng/ml



#44 AR-1268-4

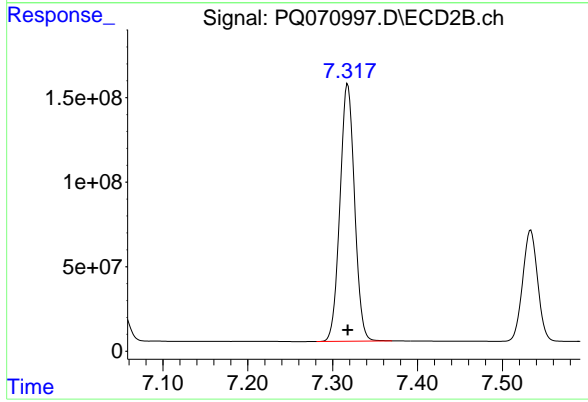
R.T.: 7.051 min
 Delta R.T.: 0.000 min
 Response: 254605180
 Conc: 752.33 ng/ml



#45 AR-1268-5

R.T.: 8.270 min
Delta R.T.: 0.000 min
Response: 981007723
Conc: 752.20 ng/ml

Instrument :
ECD_Q
ClientSampleId :
AR1268ICC750



#45 AR-1268-5

R.T.: 7.318 min
Delta R.T.: 0.000 min
Response: 1816697371
Conc: 753.88 ng/ml