

Data Path : Z:\pestpcbsrv\HPCHEM1\ECD_P\Data\PP103125\
 Data File : PP076285.D
 Signal(s) : Signal #1: ECD1A.ch Signal #2: ECD2B.ch
 Acq On : 01 Nov 2025 01:17
 Operator : YP\AJ
 Sample : Q3450-25
 Misc :
 ALS Vial : 35 Sample Multiplier: 1

Instrument :
 ECD_P
ClientSampleId :
 SS-22-(3.5-4.0)

Manual Integrations
APPROVED

Reviewed By :Rahul Chavli 11/03/2025
 Supervised By :Yogesh Patel 11/03/2025

Integration File signal 1: autoint1.e
 Integration File signal 2: autoint2.e
 Quant Time: Nov 01 02:49:43 2025
 Quant Method : Z:\pestpcbsrv\HPCHEM1\ECD_P\methods\PP102125.M
 Quant Title : GC EXTRACTABLES
 QLast Update : Fri Oct 24 15:40:32 2025
 Response via : Initial Calibration
 Integrator: ChemStation

Volume Inj. : 2 µl
 Signal #1 Phase : ZB-MR1 Signal #2 Phase: ZB-MR2
 Signal #1 Info : 30Mx0.32mmx 0.50µ Signal #2 Info : 30M x 0.32mm x 0.25µm

Compound	RT#1	RT#2	Resp#1	Resp#2	ng/ml	ng/ml

System Monitoring Compounds						
1) SA Tetrachlo...	4.641	3.778	28092571	122.0E6	19.658	18.435
2) SA Decachlor...	10.417	8.777	14654797	90232389	13.613	10.973
Target Compounds						
26) L6 AR-1254-1	6.642	5.654	23441617	213.5E6	293.411	378.628 #
27) L6 AR-1254-2	6.859	5.801	48601406	273.5E6	486.091	515.987
28) L6 AR-1254-3	7.221	6.203	78274296	723.2E6	752.965	849.745
29) L6 AR-1254-4	7.503	6.430	84446227	761.7E6	1009.956	1209.540
30) L6 AR-1254-5	7.920	6.847	132.2E6	1277.9E6	1443.399	1775.189

(f)=RT Delta > 1/2 Window (#)=Amounts differ by > 25% (m)=manual int.

Data Path : Z:\pestpcbsrv\HPCHEM1\ECD_P\Data\PP103125\
 Data File : PP076285.D
 Signal(s) : Signal #1: ECD1A.ch Signal #2: ECD2B.ch
 Acq On : 01 Nov 2025 01:17
 Operator : YP\AJ
 Sample : Q3450-25
 Misc :
 ALS Vial : 35 Sample Multiplier: 1

Instrument :

ECD_P

ClientSampleId :

SS-22-(3.5-4.0)

Manual Integrations

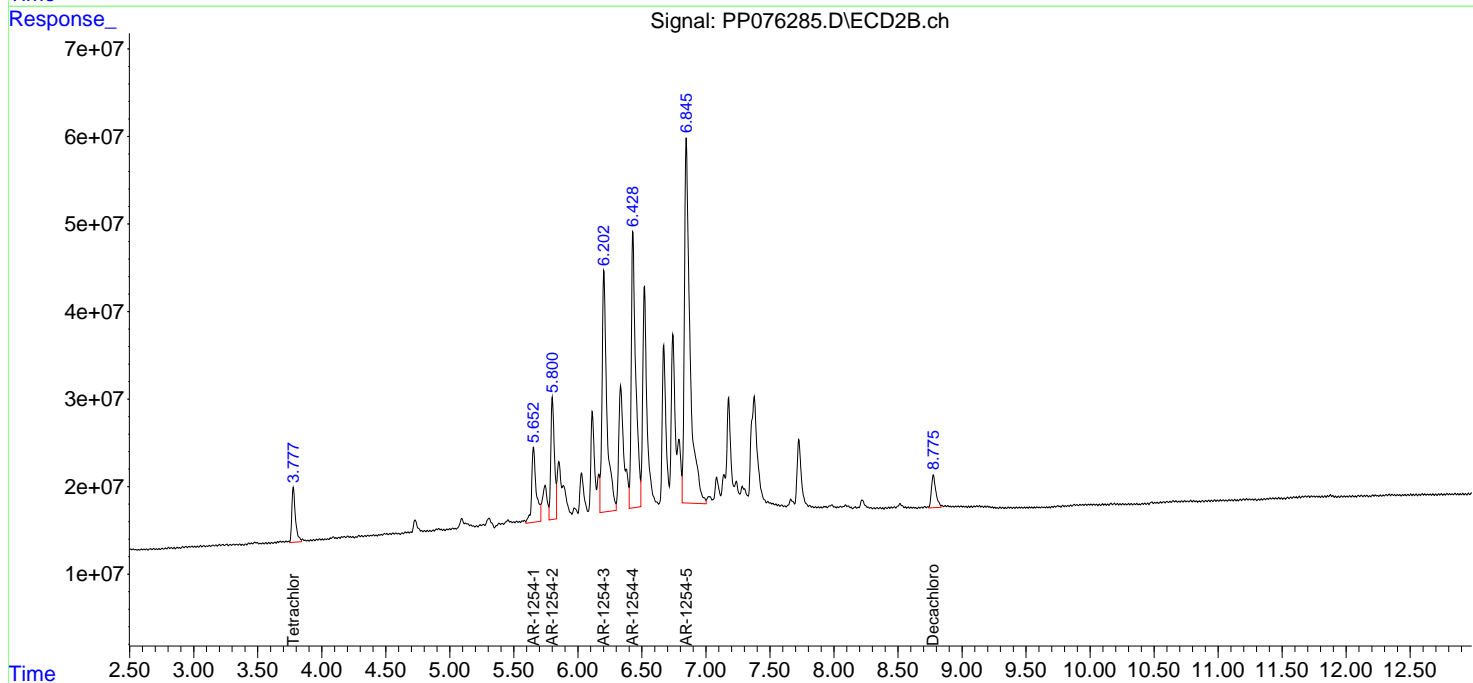
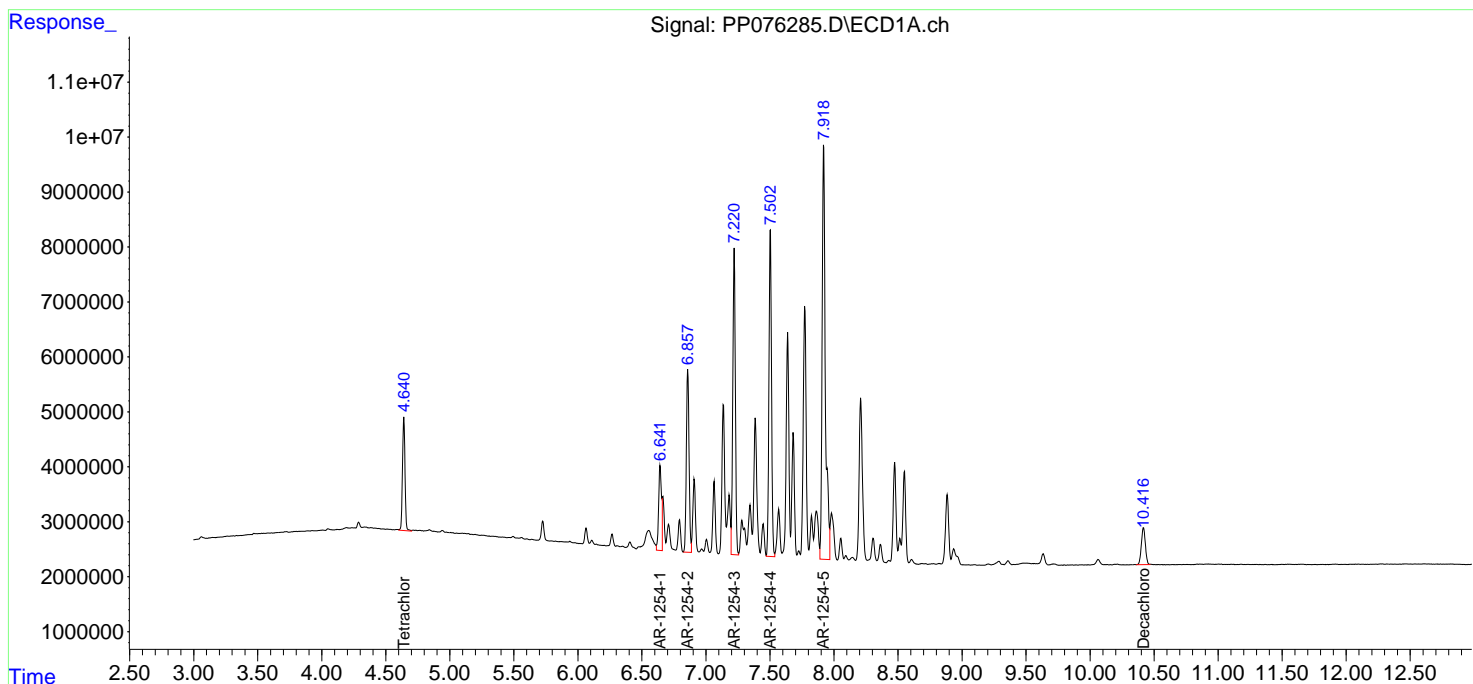
APPROVED

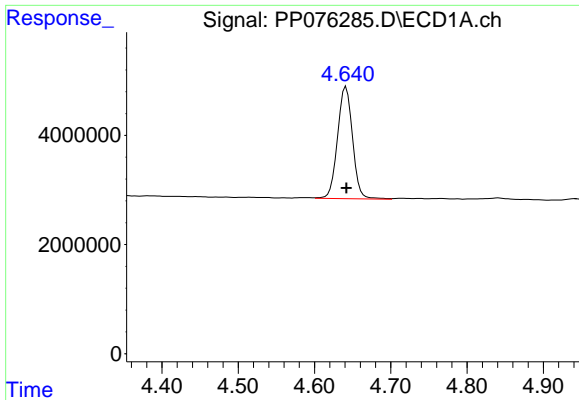
Reviewed By :Rahul Chavli 11/03/2025

Supervised By :Yogesh Patel 11/03/2025

Integration File signal 1: autoint1.e
 Integration File signal 2: autoint2.e
 Quant Time: Nov 01 02:49:43 2025
 Quant Method : Z:\pestpcbsrv\HPCHEM1\ECD_P\methods\PP102125.M
 Quant Title : GC EXTRACTABLES
 QLast Update : Fri Oct 24 15:40:32 2025
 Response via : Initial Calibration
 Integrator: ChemStation

Volume Inj. : 2 µl
 Signal #1 Phase : ZB-MR1 Signal #2 Phase: ZB-MR2
 Signal #1 Info : 30Mx0.32mmx 0.50µ Signal #2 Info : 30M x 0.32mm x 0.25µm



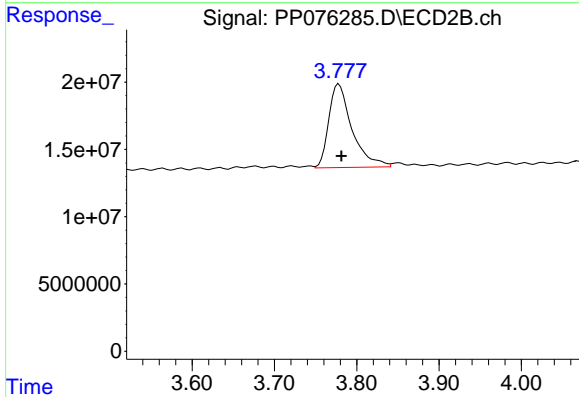


#1 Tetrachloro-m-xylene
 R.T.: 4.641 min
 Delta R.T.: 0.000 min
 Response: 28092571
 Conc: 19.66 ng/ml

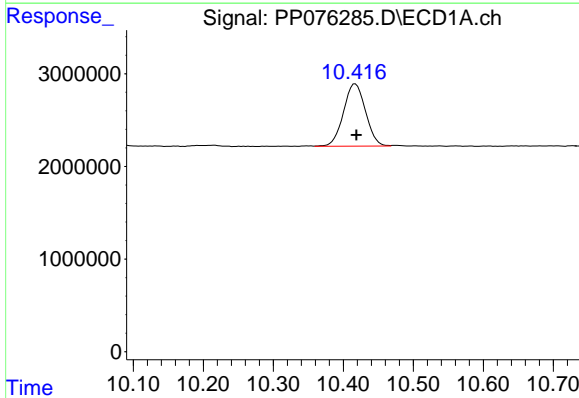
Instrument :
 ECD_P
 ClientSampleId :
 SS-22-(3.5-4.0)

Manual Integrations
 APPROVED

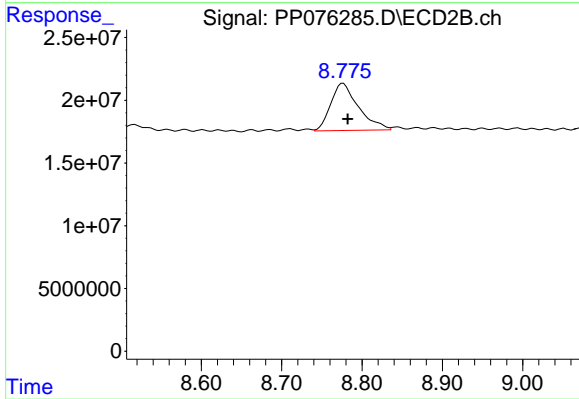
Reviewed By :Rahul Chavli 11/03/2025
 Supervised By :Yogesh Patel 11/03/2025



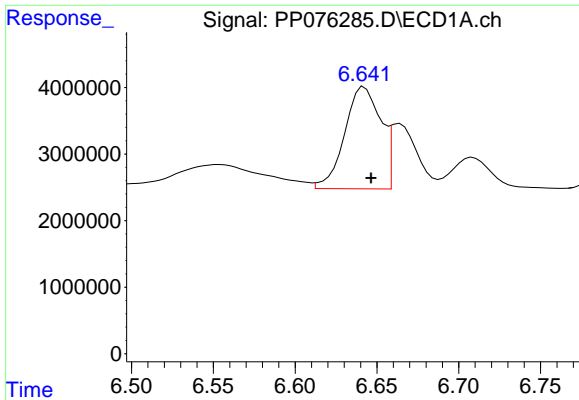
#1 Tetrachloro-m-xylene
 R.T.: 3.778 min
 Delta R.T.: -0.003 min
 Response: 122005455
 Conc: 18.43 ng/ml



#2 Decachlorobiphenyl
 R.T.: 10.417 min
 Delta R.T.: -0.002 min
 Response: 14654797
 Conc: 13.61 ng/ml



#2 Decachlorobiphenyl
 R.T.: 8.777 min
 Delta R.T.: -0.005 min
 Response: 90232389
 Conc: 10.97 ng/ml



#26 AR-1254-1

R.T.: 6.642 min
 Delta R.T.: -0.004 min
 Response: 23441617
 Conc: 293.41 ng/ml

Instrument :

ECD_P

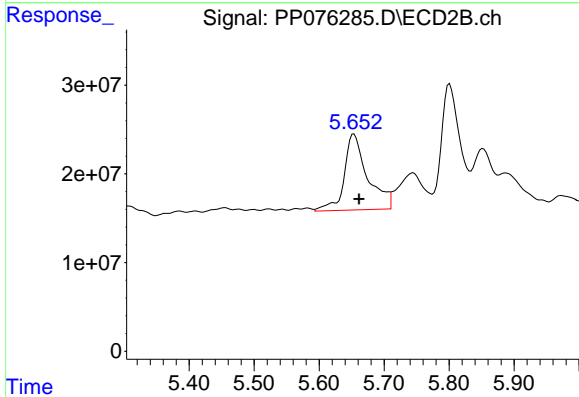
ClientSampleId :

SS-22-(3.5-4.0)

Manual Integrations

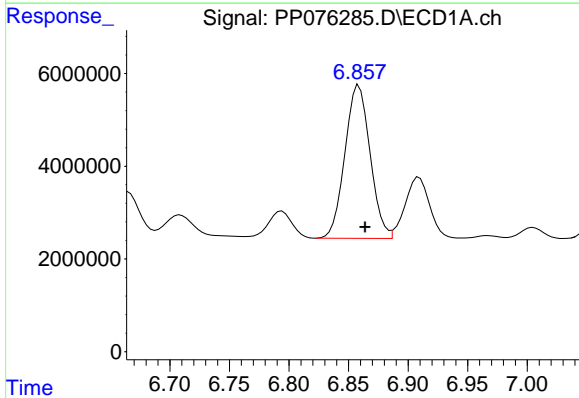
APPROVED

Reviewed By :Rahul Chavli 11/03/2025
 Supervised By :Yogesh Patel 11/03/2025



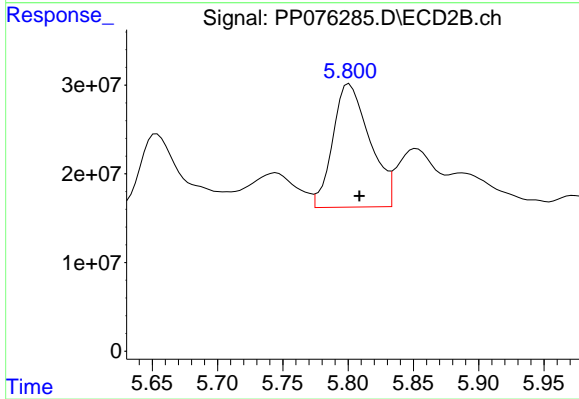
#26 AR-1254-1

R.T.: 5.654 min
 Delta R.T.: -0.008 min
 Response: 213546316
 Conc: 378.63 ng/ml



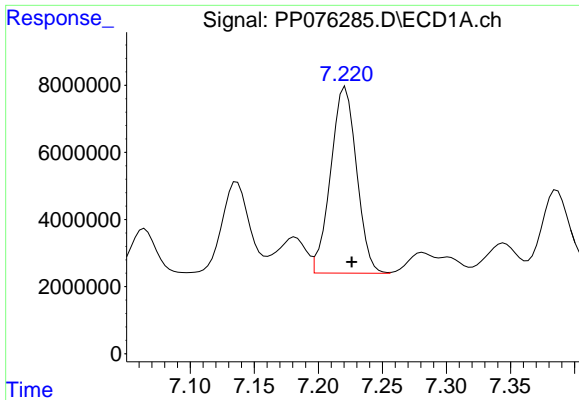
#27 AR-1254-2

R.T.: 6.859 min
 Delta R.T.: -0.005 min
 Response: 48601406
 Conc: 486.09 ng/ml



#27 AR-1254-2

R.T.: 5.801 min
 Delta R.T.: -0.008 min
 Response: 273514973
 Conc: 515.99 ng/ml



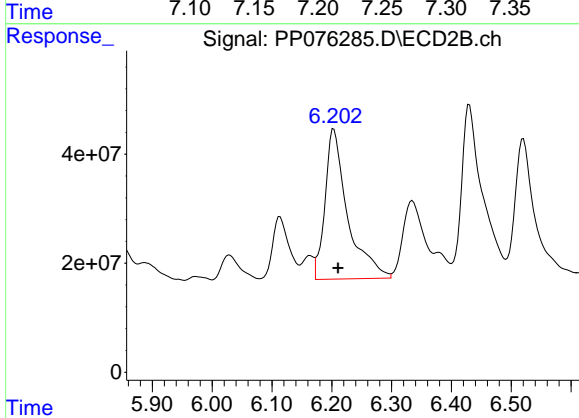
#28 AR-1254-3

R.T.: 7.221 min
 Delta R.T.: -0.005 min
 Response: 78274296
 Conc: 752.97 ng/ml

Instrument :
 ECD_P
 ClientSampleId :
 SS-22-(3.5-4.0)

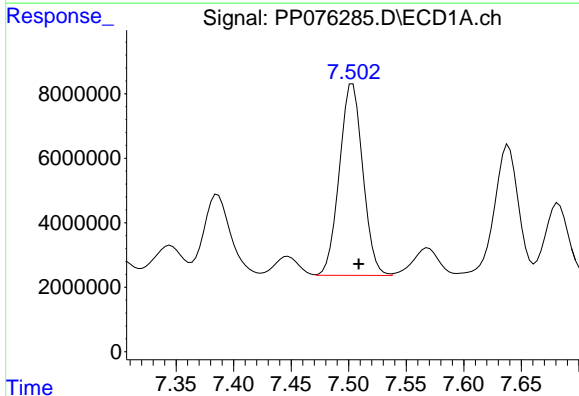
Manual Integrations
 APPROVED

Reviewed By :Rahul Chavli 11/03/2025
 Supervised By :Yogesh Patel 11/03/2025



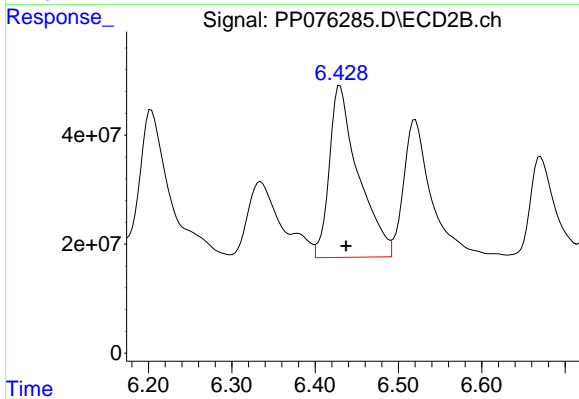
#28 AR-1254-3

R.T.: 6.203 min
 Delta R.T.: -0.008 min
 Response: 723210154
 Conc: 849.74 ng/ml



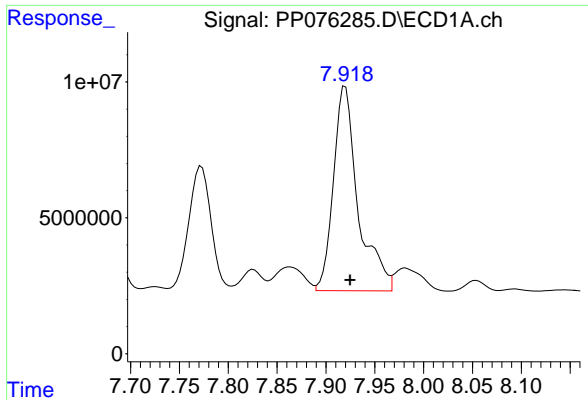
#29 AR-1254-4

R.T.: 7.503 min
 Delta R.T.: -0.005 min
 Response: 84446227
 Conc: 1009.96 ng/ml



#29 AR-1254-4

R.T.: 6.430 min
 Delta R.T.: -0.007 min
 Response: 761745745
 Conc: 1209.54 ng/ml



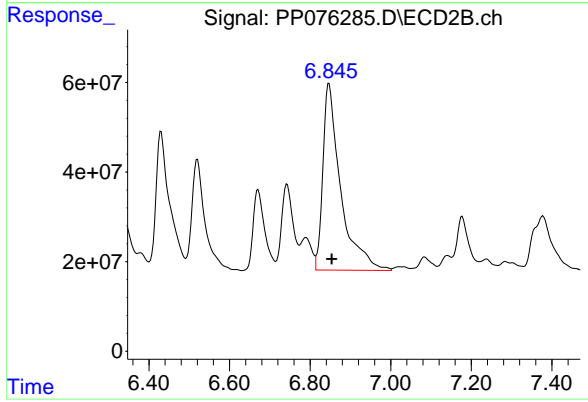
#30 AR-1254-5

R.T.: 7.920 min
 Delta R.T.: -0.005 min
 Response: 132173115
 Conc: 1443.40 ng/m

Instrument :
 ECD_P
 ClientSampleId :
 SS-22-(3.5-4.0)

Manual Integrations
 APPROVED

Reviewed By :Rahul Chavli 11/03/2025
 Supervised By :Yogesh Patel 11/03/2025



#30 AR-1254-5

R.T.: 6.847 min
 Delta R.T.: -0.007 min
 Response: 1277927286
 Conc: 1775.19 ng/ml