

Data Path : Z:\pestpcbsrv\HPCHEM1\ECD\_P\Data\PP102825\  
 Data File : PP076136.D  
 Signal(s) : Signal #1: ECD1A.ch Signal #2: ECD2B.ch  
 Acq On : 28 Oct 2025 17:18  
 Operator : YP\AJ  
 Sample : Q3466-05  
 Misc :  
 ALS Vial : 22 Sample Multiplier: 1

Instrument :  
 ECD\_P  
 ClientSampleId :  
 B9-0.0-1.0-20251023

Integration File signal 1: autoint1.e  
 Integration File signal 2: autoint2.e  
 Quant Time: Oct 29 01:42:55 2025  
 Quant Method : Z:\pestpcbsrv\HPCHEM1\ECD\_P\methods\PP102125.M  
 Quant Title : GC EXTRACTABLES  
 QLast Update : Fri Oct 24 15:40:32 2025  
 Response via : Initial Calibration  
 Integrator: ChemStation

Volume Inj. : 2 µl  
 Signal #1 Phase : ZB-MR1 Signal #2 Phase: ZB-MR2  
 Signal #1 Info : 30Mx0.32mmx 0.50µ Signal #2 Info : 30M x 0.32mm x 0.25µm

| Compound                    | RT#1   | RT#2  | Resp#1   | Resp#2  | ng/ml  | ng/ml  |
|-----------------------------|--------|-------|----------|---------|--------|--------|
| -----                       |        |       |          |         |        |        |
| System Monitoring Compounds |        |       |          |         |        |        |
| 1) SA Tetrachlo...          | 4.642  | 3.782 | 32491863 | 158.2E6 | 22.736 | 23.901 |
| 2) SA Decachlor...          | 10.411 | 8.777 | 18386618 | 124.1E6 | 17.080 | 15.096 |

Target Compounds

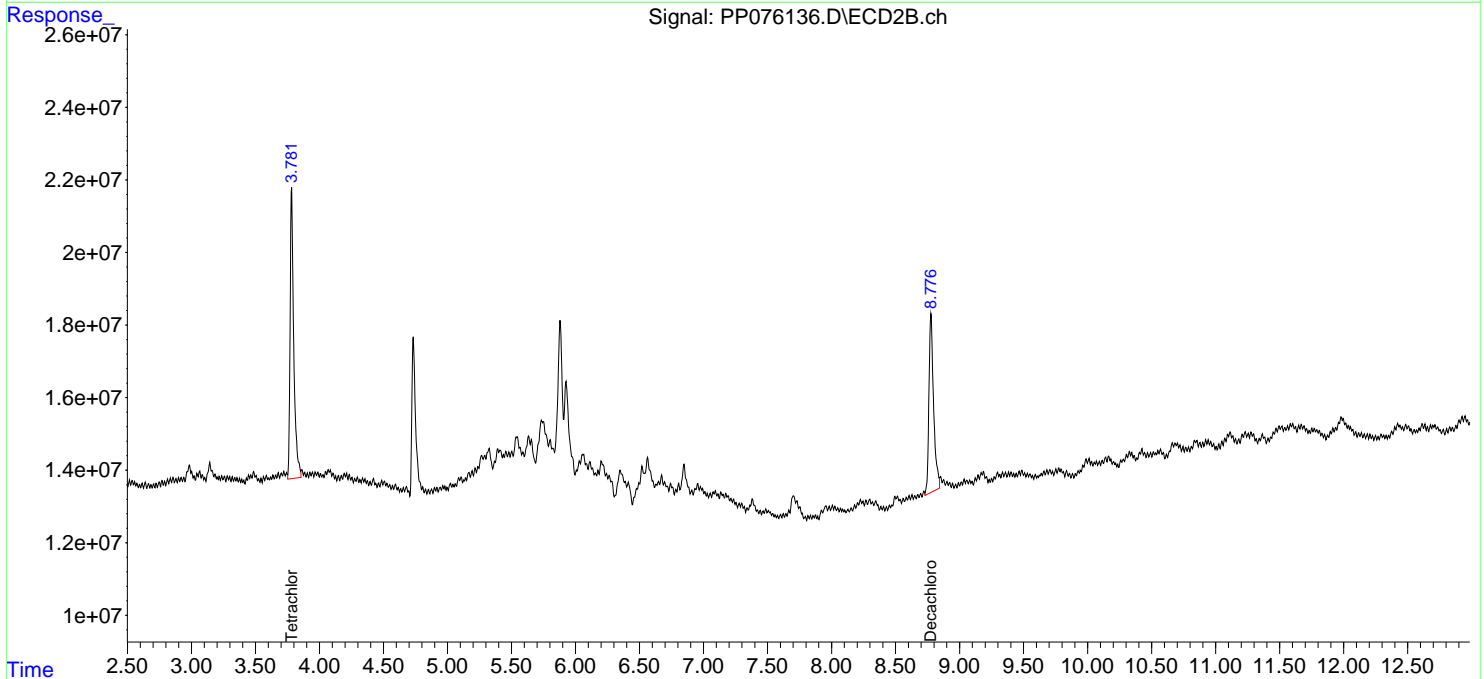
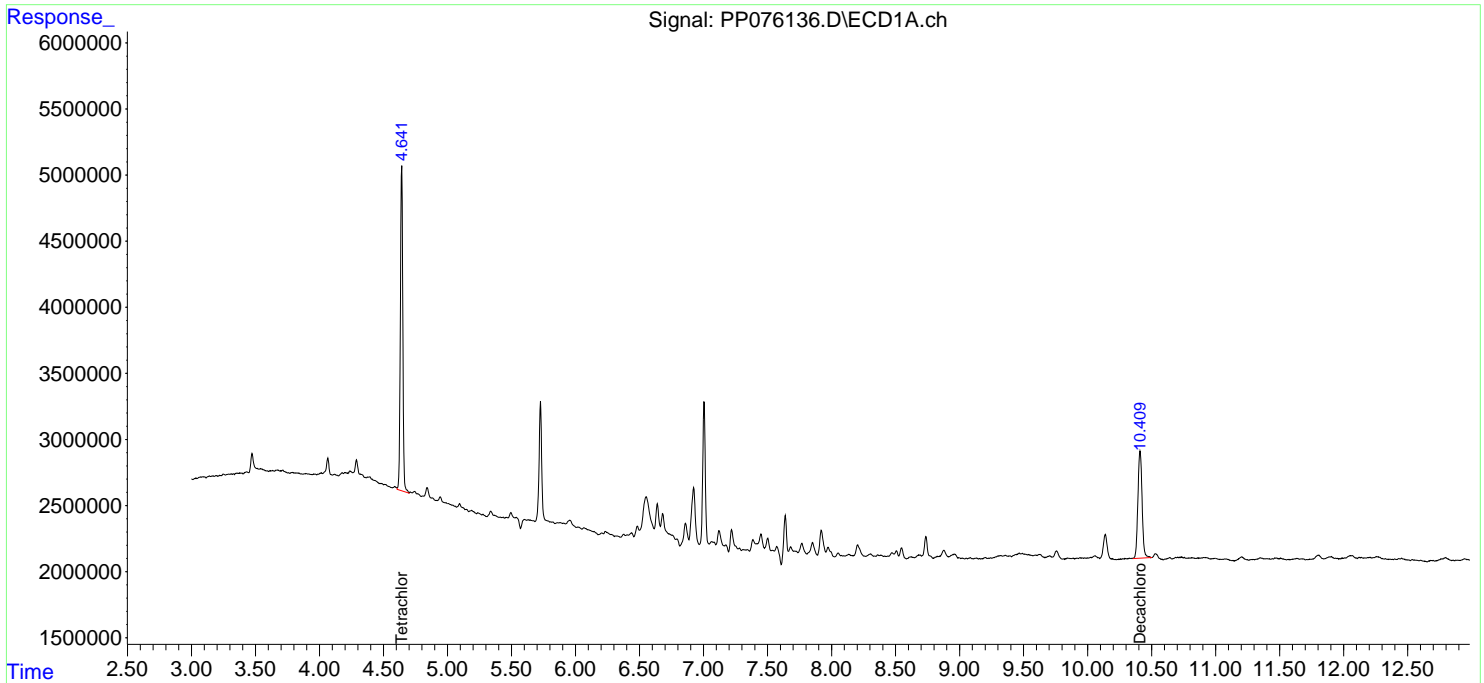
(f)=RT Delta > 1/2 Window (#)=Amounts differ by > 25% (m)=manual int.

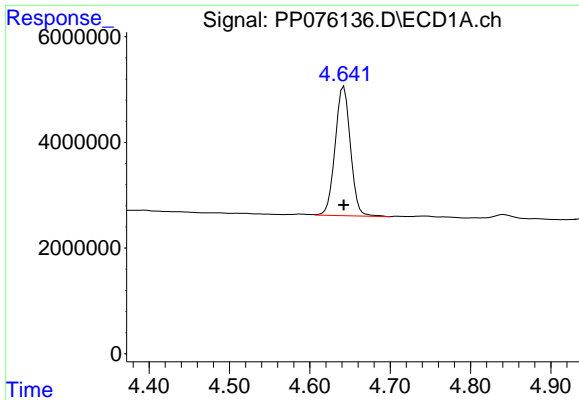
Data Path : Z:\pestpcbsrv\HPCHEM1\ECD\_P\Data\PP102825\  
 Data File : PP076136.D  
 Signal(s) : Signal #1: ECD1A.ch Signal #2: ECD2B.ch  
 Acq On : 28 Oct 2025 17:18  
 Operator : YP\AJ  
 Sample : Q3466-05  
 Misc :  
 ALS Vial : 22 Sample Multiplier: 1

Instrument :  
 ECD\_P  
 ClientSampleId :  
 B9-0.0-1.0-20251023

Integration File signal 1: autoint1.e  
 Integration File signal 2: autoint2.e  
 Quant Time: Oct 29 01:42:55 2025  
 Quant Method : Z:\pestpcbsrv\HPCHEM1\ECD\_P\methods\PP102125.M  
 Quant Title : GC EXTRACTABLES  
 QLast Update : Fri Oct 24 15:40:32 2025  
 Response via : Initial Calibration  
 Integrator: ChemStation

Volume Inj. : 2 µl  
 Signal #1 Phase : ZB-MR1 Signal #2 Phase: ZB-MR2  
 Signal #1 Info : 30Mx0.32mmx 0.50µ Signal #2 Info : 30M x 0.32mm x 0.25µm

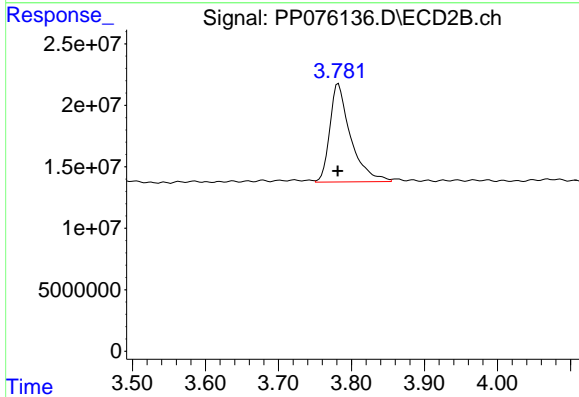




#1 Tetrachloro-m-xylene

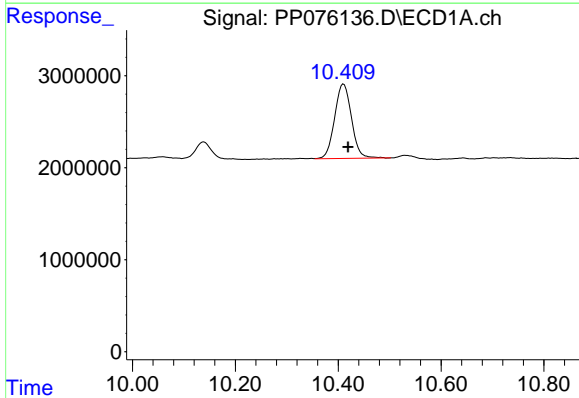
R.T.: 4.642 min  
 Delta R.T.: 0.000 min  
 Response: 32491863  
 Conc: 22.74 ng/ml

Instrument :  
 ECD\_P  
 ClientSampleId :  
 B9-0.0-1.0-20251023



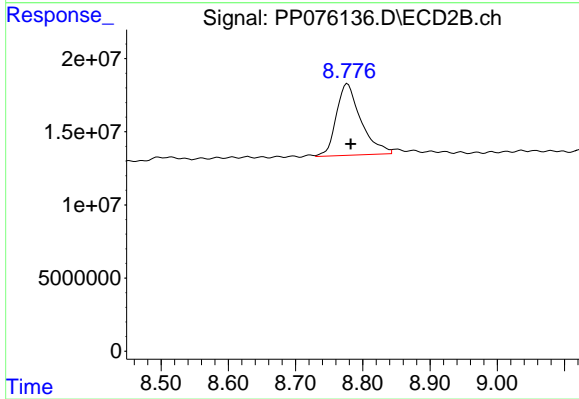
#1 Tetrachloro-m-xylene

R.T.: 3.782 min  
 Delta R.T.: 0.000 min  
 Response: 158185149  
 Conc: 23.90 ng/ml



#2 Decachlorobiphenyl

R.T.: 10.411 min  
 Delta R.T.: -0.008 min  
 Response: 18386618  
 Conc: 17.08 ng/ml



#2 Decachlorobiphenyl

R.T.: 8.777 min  
 Delta R.T.: -0.005 min  
 Response: 124136291  
 Conc: 15.10 ng/ml