

Data Path : Z:\svoasrv\HPCHEM1\BNA_F\Data\BF110625\
 Data File : BF144180.D
 Acq On : 06 Nov 2025 11:13
 Operator : RC/JU
 Sample : SSTDCCC040
 Misc :
 ALS Vial : 2 Sample Multiplier: 1

Instrument :
 BNA_F
 ClientSampleId :
 SSTDCCC040

Quant Time: Nov 06 11:34:17 2025
 Quant Method : Z:\svoasrv\HPCHEM1\BNA_F\Methods\8270-BF110525.M
 Quant Title : ASP BNA STANDARDS FOR 5 POINT CALIBRATION
 QLast Update : Wed Nov 05 18:37:33 2025
 Response via : Initial Calibration

Compound	R.T.	QIon	Response	Conc Units	Dev(Min)	
Internal Standards						
1) 1,4-Dichlorobenzene-d4	6.875	152	77162	20.000 ng	0.00	
21) Naphthalene-d8	8.157	136	299960	20.000 ng	0.00	
39) Acenaphthene-d10	9.916	164	175155	20.000 ng	0.00	
64) Phenanthrene-d10	11.404	188	301670	20.000 ng	0.00	
76) Chrysene-d12	14.057	240	184652	20.000 ng	0.00	
86) Perylene-d12	15.539	264	216041	20.000 ng	0.00	
System Monitoring Compounds						
5) 2-Fluorophenol	5.487	112	412062	83.568 ng	0.00	
7) Phenol-d6	6.504	99	464824	83.196 ng	0.00	
23) Nitrobenzene-d5	7.440	82	430300	82.851 ng	0.00	
42) 2,4,6-Tribromophenol	10.710	330	186707	84.944 ng	0.00	
45) 2-Fluorobiphenyl	9.234	172	896864	75.625 ng	0.00	
79) Terphenyl-d14	12.992	244	1014109	87.235 ng	0.00	
Target Compounds						
2) 1,4-Dioxane	2.616	88	86176	42.273 ng		Qvalue 96
3) Pyridine	3.381	79	246430	43.329 ng		98
4) n-Nitrosodimethylamine	3.334	42	128629	43.298 ng		99
6) Aniline	6.540	93	332605	41.783 ng		98
8) 2-Chlorophenol	6.657	128	200122	41.385 ng		98
9) Benzaldehyde	6.428	77	127860	40.527 ng		97
10) Phenol	6.516	94	281330	41.213 ng		98
11) bis(2-Chloroethyl)ether	6.610	93	205644	41.344 ng		98
12) 1,3-Dichlorobenzene	6.816	146	244627	40.996 ng		97
13) 1,4-Dichlorobenzene	6.893	146	245191	41.015 ng		100
14) 1,2-Dichlorobenzene	7.045	146	234848	40.987 ng		99
15) Benzyl Alcohol	7.016	79	183128	41.394 ng		99
16) 2,2'-oxybis(1-Chloropr...	7.145	45	384897	42.021 ng		100
17) 2-Methylphenol	7.128	107	161770	42.052 ng		99
18) Hexachloroethane	7.387	117	84498	42.545 ng		98
19) n-Nitroso-di-n-propyla...	7.287	70	150190	40.835 ng		98
20) 3+4-Methylphenols	7.281	107	187407	41.326 ng		99
22) Acetophenone	7.287	105	258423	40.160 ng		99
24) Nitrobenzene	7.457	77	231445	41.043 ng		99
25) Isophorone	7.698	82	409848	41.720 ng		98
26) 2-Nitrophenol	7.775	139	116137	41.604 ng		96
27) 2,4-Dimethylphenol	7.810	122	175819	42.022 ng		99
28) bis(2-Chloroethoxy)met...	7.904	93	254021	41.408 ng		98
29) 2,4-Dichlorophenol	8.016	162	195158	40.470 ng		100
30) 1,2,4-Trichlorobenzene	8.098	180	195235	39.427 ng		99
31) Naphthalene	8.181	128	570292	39.968 ng		99
32) Benzoic acid	7.922	122	108307	35.315 ng		96
33) 4-Chloroaniline	8.228	127	217206	41.738 ng		98
34) Hexachlorobutadiene	8.292	225	151142	40.500 ng		98
35) Caprolactam	8.604	113	56873	43.048 ng		95
36) 4-Chloro-3-methylphenol	8.710	107	181674	42.037 ng		99
37) 2-Methylnaphthalene	8.869	142	387454	40.614 ng		100
38) 1-Methylnaphthalene	8.969	142	369457	40.136 ng		99
40) 1,2,4,5-Tetrachloroben...	9.039	216	229334	39.951 ng		99
41) Hexachlorocyclopentadiene	9.022	237	69669	39.826 ng		96
43) 2,4,6-Trichlorophenol	9.151	196	152111	38.933 ng		95

Data Path : Z:\svoasrv\HPCHEM1\BNA_F\Data\BF110625\
 Data File : BF144180.D
 Acq On : 06 Nov 2025 11:13
 Operator : RC/JU
 Sample : SSTDCCC040
 Misc :
 ALS Vial : 2 Sample Multiplier: 1

Instrument :
 BNA_F
 ClientSampleId :
 SSTDCCC040

Quant Time: Nov 06 11:34:17 2025
 Quant Method : Z:\svoasrv\HPCHEM1\BNA_F\Methods\8270-BF110525.M
 Quant Title : ASP BNA STANDARDS FOR 5 POINT CALIBRATION
 QLast Update : Wed Nov 05 18:37:33 2025
 Response via : Initial Calibration

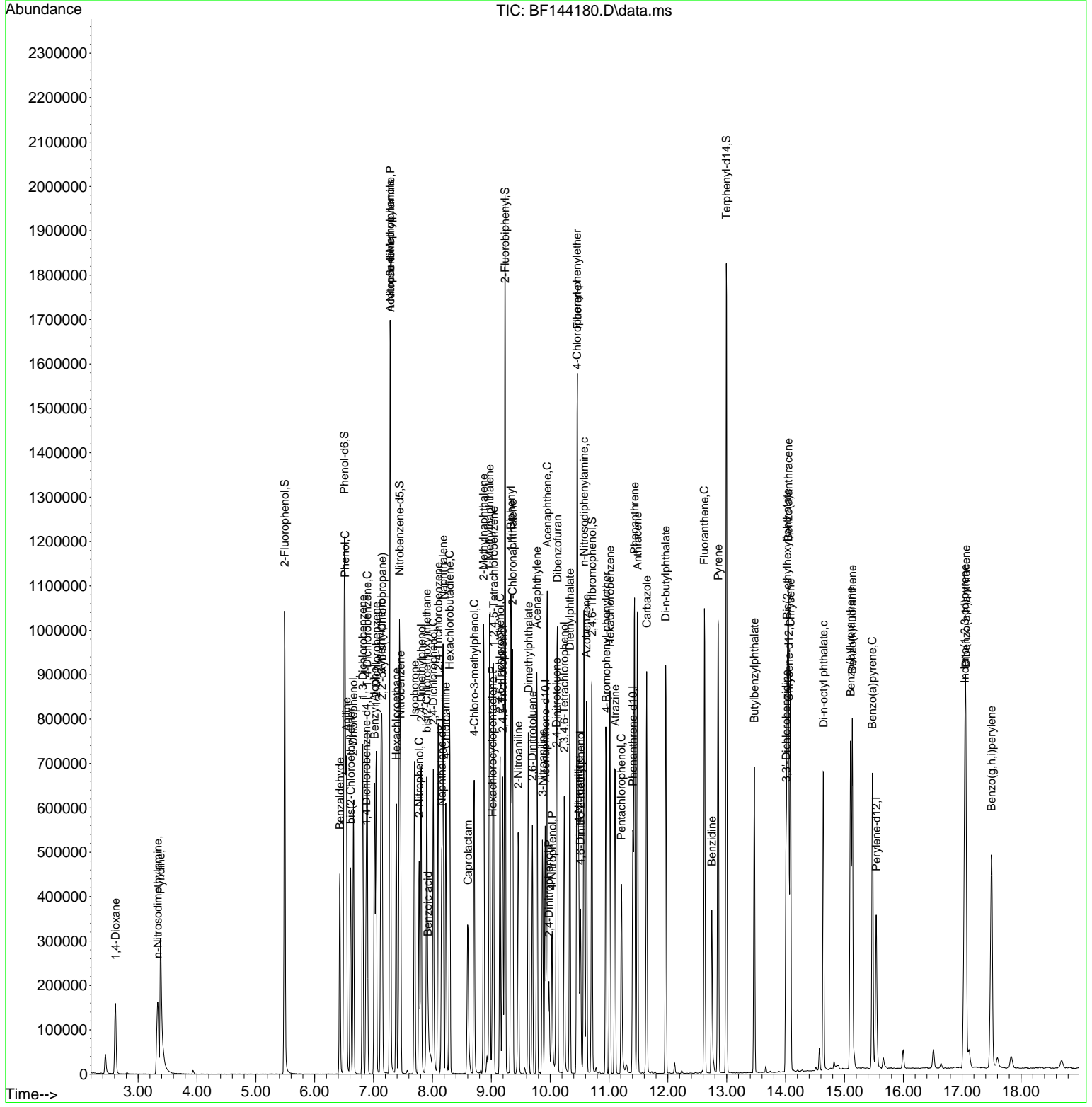
Compound	R.T.	QIon	Response	Conc	Units	Dev(Min)
44) 2,4,5-Trichlorophenol	9.192	196	166938	39.644	ng	99
46) 1,1'-Biphenyl	9.334	154	477827	39.082	ng	99
47) 2-Chloronaphthalene	9.363	162	404419	38.778	ng	99
48) 2-Nitroaniline	9.457	65	127167	42.260	ng	98
49) Acenaphthylene	9.775	152	567978	39.964	ng	99
50) Dimethylphthalate	9.634	163	470054	40.509	ng	100
51) 2,6-Dinitrotoluene	9.698	165	99437	42.332	ng	98
52) Acenaphthene	9.951	154	369154	38.842	ng	99
53) 3-Nitroaniline	9.869	138	109186	42.522	ng	99
54) 2,4-Dinitrophenol	9.981	184	51045	35.987	ng	99
55) Dibenzofuran	10.122	168	527126	39.602	ng	99
56) 4-Nitrophenol	10.034	139	77512	41.731	ng	97
57) 2,4-Dinitrotoluene	10.104	165	136325	43.353	ng	100
58) Fluorene	10.463	166	406516	40.169	ng	99
59) 2,3,4,6-Tetrachlorophenol	10.239	232	121713	40.854	ng	98
60) Diethylphthalate	10.334	149	443003	41.414	ng	99
61) 4-Chlorophenyl-phenyle...	10.457	204	236731	41.066	ng	99
62) 4-Nitroaniline	10.486	138	106296	43.469	ng	99
63) Azobenzene	10.616	77	412458	41.431	ng	99
65) 4,6-Dinitro-2-methylph...	10.516	198	81746	39.889	ng	99
66) n-Nitrosodiphenylamine	10.575	169	391555	40.356	ng	99
67) 4-Bromophenyl-phenylether	10.951	248	158394	41.135	ng	98
68) Hexachlorobenzene	11.016	284	188618	41.588	ng	98
69) Atrazine	11.104	200	125179	40.569	ng	98
70) Pentachlorophenol	11.210	266	94551	41.865	ng	100
71) Phenanthrene	11.433	178	616940	41.075	ng	99
72) Anthracene	11.486	178	618922	40.525	ng	100
73) Carbazole	11.639	167	531956	40.961	ng	100
74) Di-n-butylphthalate	11.963	149	663671	42.273	ng	100
75) Fluoranthene	12.622	202	649189	41.842	ng	99
77) Benzidine	12.745	184	226599	41.487	ng	99
78) Pyrene	12.857	202	651255	43.743	ng	100
80) Butylbenzylphthalate	13.469	149	229535	44.482	ng	97
81) Benzo(a)anthracene	14.045	228	520973	40.708	ng	100
82) 3,3'-Dichlorobenzidine	14.010	252	173413	39.531	ng	96
83) Chrysene	14.080	228	492102	41.654	ng	99
84) Bis(2-ethylhexyl)phtha...	14.027	149	294872	41.744	ng	100
85) Di-n-octyl phthalate	14.645	149	478580	39.268	ng	100
87) Indeno(1,2,3-cd)pyrene	17.045	276	645112	41.598	ng	99
88) Benzo(b)fluoranthene	15.104	252	481093	39.169	ng	99
89) Benzo(k)fluoranthene	15.133	252	499580	43.456	ng	99
90) Benzo(a)pyrene	15.474	252	468327	41.332	ng	98
91) Dibenzo(a,h)anthracene	17.062	278	516567	41.475	ng	98
92) Benzo(g,h,i)perylene	17.498	276	517098	42.043	ng	99

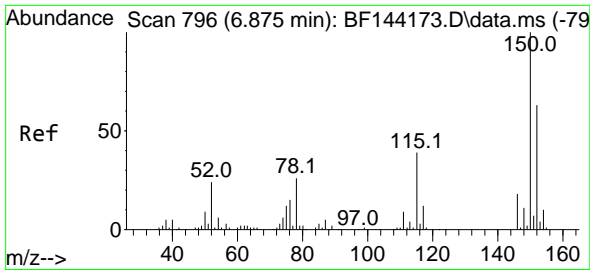
(#) = qualifier out of range (m) = manual integration (+) = signals summed

Data Path : Z:\svoasrv\HPCHEM1\BNA_F\Data\BF110625\
 Data File : BF144180.D
 Acq On : 06 Nov 2025 11:13
 Operator : RC/JU
 Sample : SSTDCCC040
 Misc :
 ALS Vial : 2 Sample Multiplier: 1

Instrument :
 BNA_F
ClientSampleId :
 SSTDCCC040

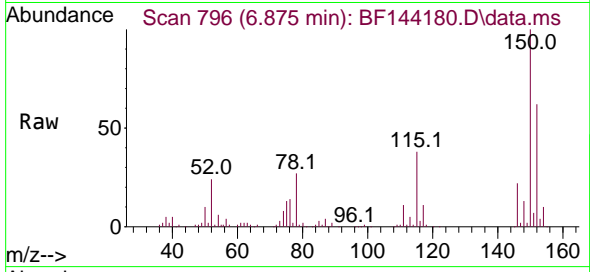
Quant Time: Nov 06 11:34:17 2025
 Quant Method : Z:\svoasrv\HPCHEM1\BNA_F\Methods\8270-BF110525.M
 Quant Title : ASP BNA STANDARDS FOR 5 POINT CALIBRATION
 QLast Update : Wed Nov 05 18:37:33 2025
 Response via : Initial Calibration



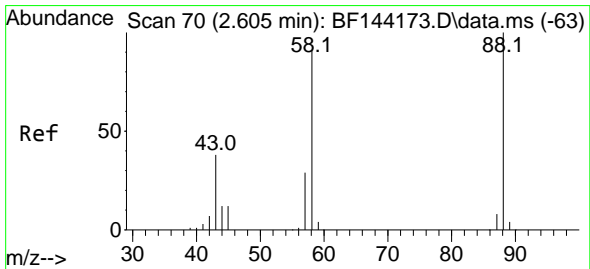
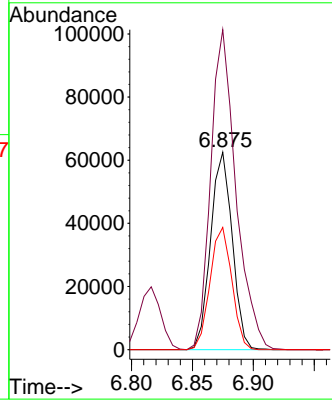
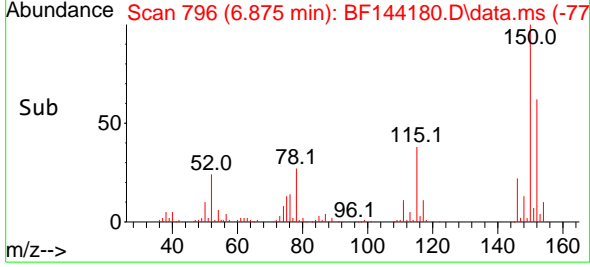


#1
 1,4-Dichlorobenzene-d4
 Concen: 20.000 ng
 RT: 6.875 min Scan# 79
 Delta R.T. -0.000 min
 Lab File: BF144180.D
 Acq: 06 Nov 2025 11:13

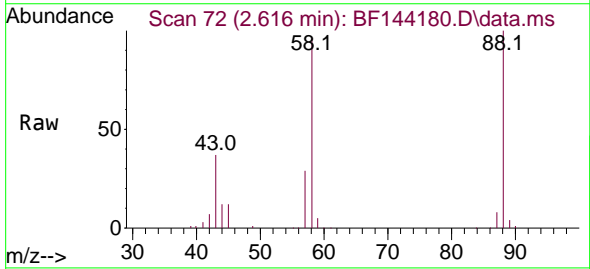
Instrument :
 BNA_F
 ClientSampleId :
 SSTDCCC040



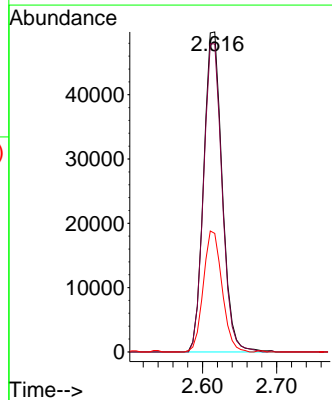
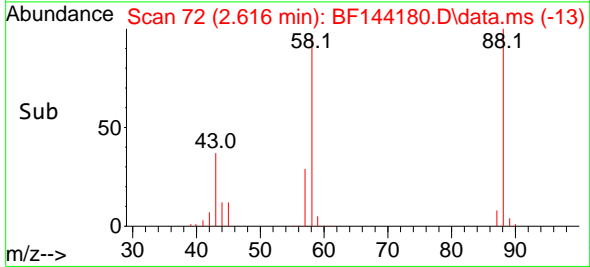
Tgt Ion:152 Resp: 77162
 Ion Ratio Lower Upper
 152 100
 150 162.1 127.4 191.0
 115 61.9 49.5 74.3

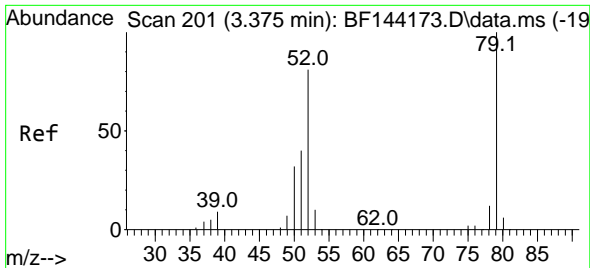


#2
 1,4-Dioxane
 Concen: 42.273 ng
 RT: 2.616 min Scan# 72
 Delta R.T. -0.000 min
 Lab File: BF144180.D
 Acq: 06 Nov 2025 11:13



Tgt Ion: 88 Resp: 86176
 Ion Ratio Lower Upper
 88 100
 58 96.2 73.1 109.7
 43 38.2 31.0 46.6



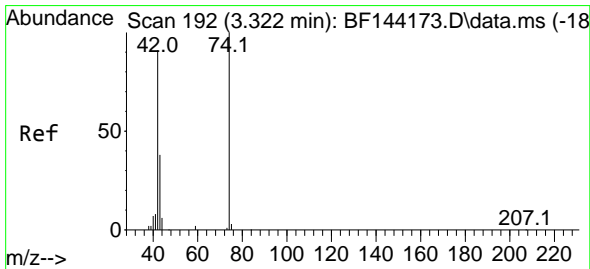
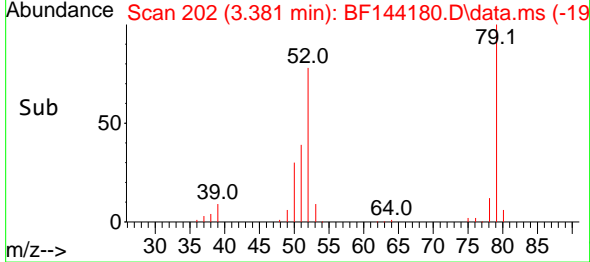
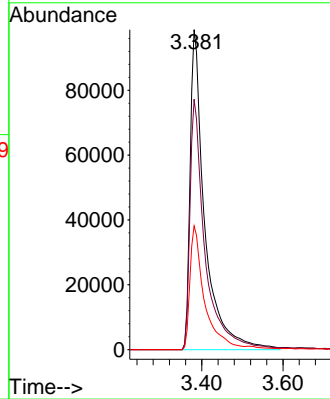
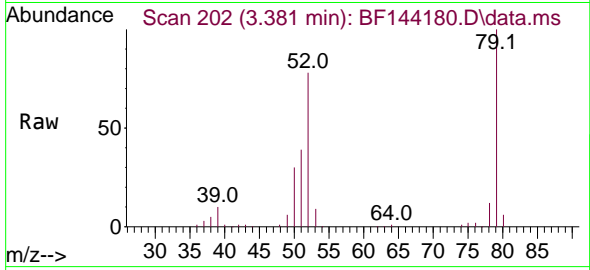


#3
 Pyridine
 Concen: 43.329 ng
 RT: 3.381 min Scan# 20
 Delta R.T. -0.029 min
 Lab File: BF144180.D
 Acq: 06 Nov 2025 11:13

Instrument :
 BNA_F
 ClientSampleId :
 SSTDCCC040

Tgt Ion: 79 Resp: 246430

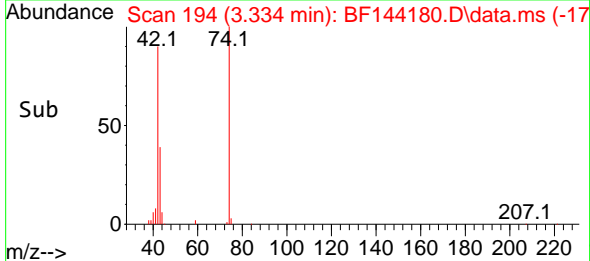
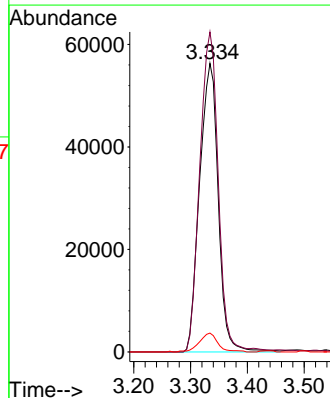
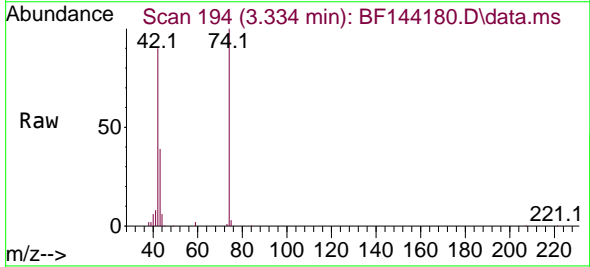
Ion	Ratio	Lower	Upper
79	100		
52	78.2	64.5	96.7
51	38.7	31.7	47.5

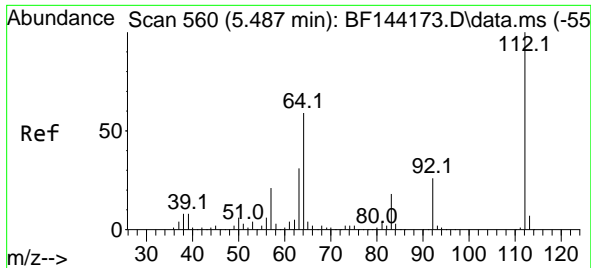


#4
 n-Nitrosodimethylamine
 Concen: 43.298 ng
 RT: 3.334 min Scan# 194
 Delta R.T. -0.012 min
 Lab File: BF144180.D
 Acq: 06 Nov 2025 11:13

Tgt Ion: 42 Resp: 128629

Ion	Ratio	Lower	Upper
42	100		
74	110.9	88.2	132.4
44	6.5	5.7	8.5

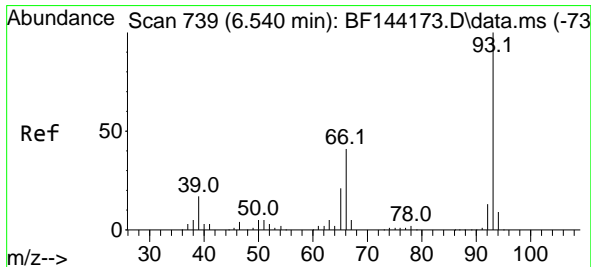
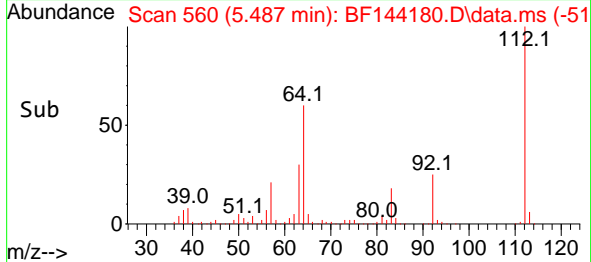
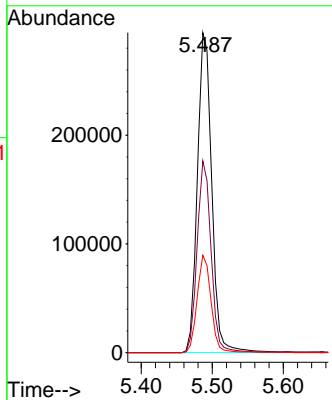
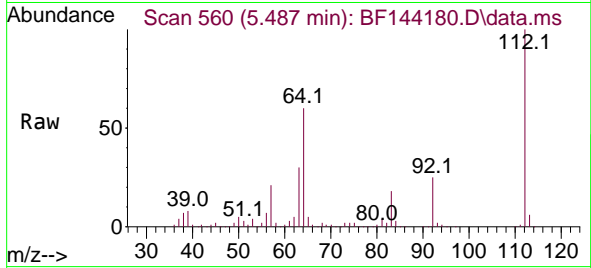




#5
 2-Fluorophenol
 Concen: 83.568 ng
 RT: 5.487 min Scan# 50
 Delta R.T. -0.006 min
 Lab File: BF144180.D
 Acq: 06 Nov 2025 11:13

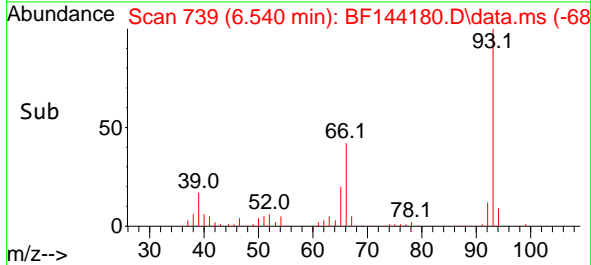
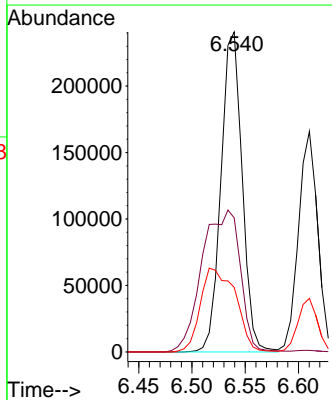
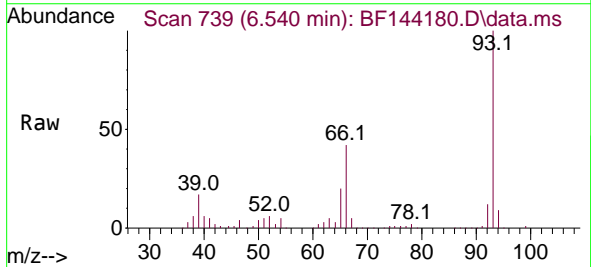
Instrument : BNA_F
 ClientSampleId : SSTDCCC040

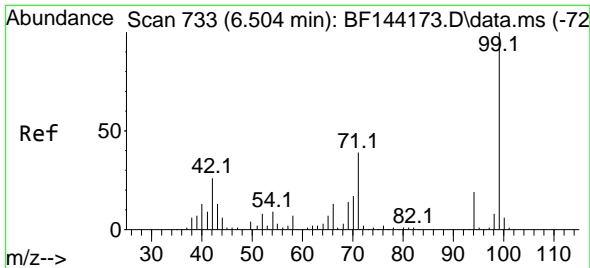
Tgt Ion	Resp	Lower	Upper
112	100		
64	59.9	47.2	70.8
63	30.4	24.4	36.6



#6
 Aniline
 Concen: 41.783 ng
 RT: 6.540 min Scan# 739
 Delta R.T. 0.006 min
 Lab File: BF144180.D
 Acq: 06 Nov 2025 11:13

Tgt Ion	Resp	Lower	Upper
93	100		
66	41.9	34.3	51.5
65	20.2	16.9	25.3



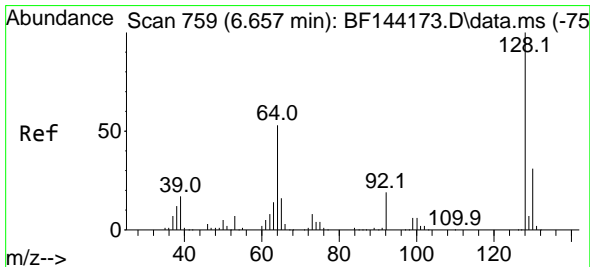
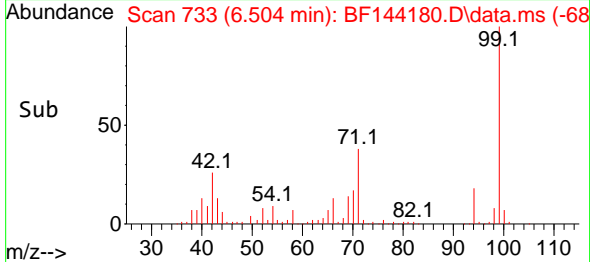
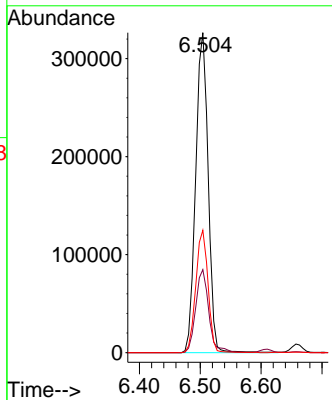
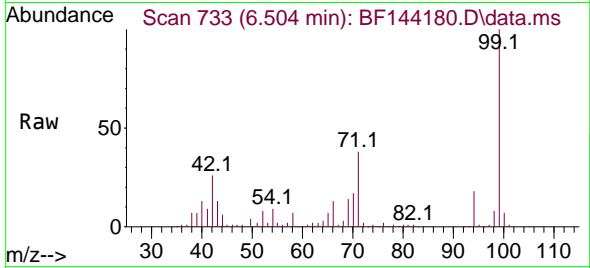


#7
 Phenol-d6
 Concen: 83.196 ng
 RT: 6.504 min Scan# 733
 Delta R.T. 0.006 min
 Lab File: BF144180.D
 Acq: 06 Nov 2025 11:13

Instrument : BNA_F
 ClientSampleId : SSTDCCC040

Tgt Ion: 99 Resp: 464824

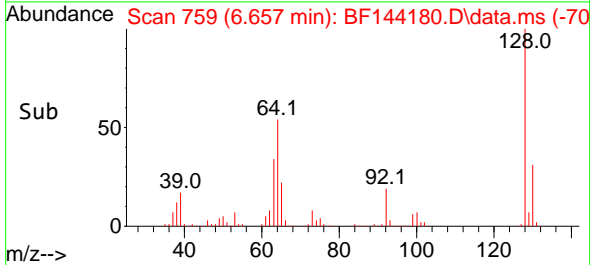
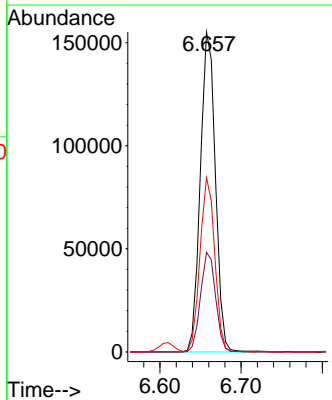
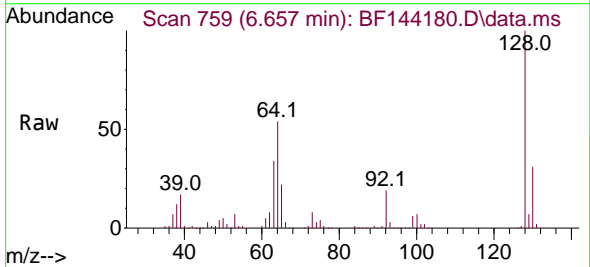
Ion	Ratio	Lower	Upper
99	100		
42	25.9	20.9	31.3
71	38.2	31.4	47.2

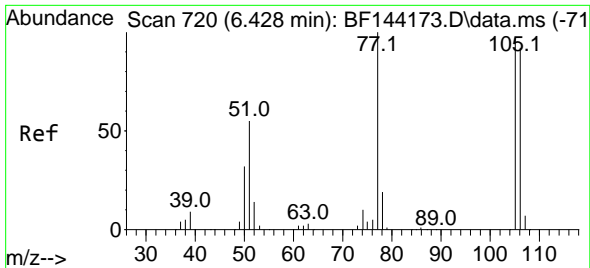


#8
 2-Chlorophenol
 Concen: 41.385 ng
 RT: 6.657 min Scan# 759
 Delta R.T. -0.000 min
 Lab File: BF144180.D
 Acq: 06 Nov 2025 11:13

Tgt Ion: 128 Resp: 200122

Ion	Ratio	Lower	Upper
128	100		
130	31.1	10.5	50.5
64	54.5	33.2	73.2

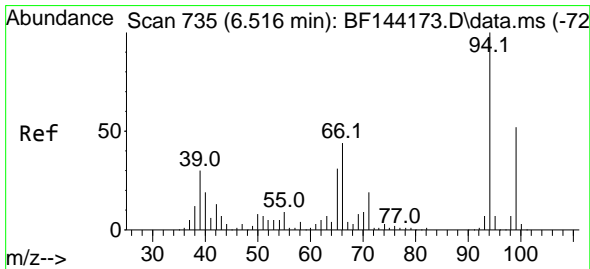
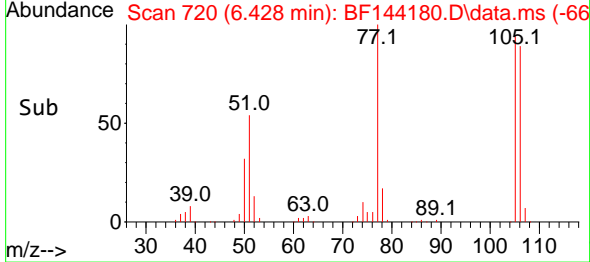
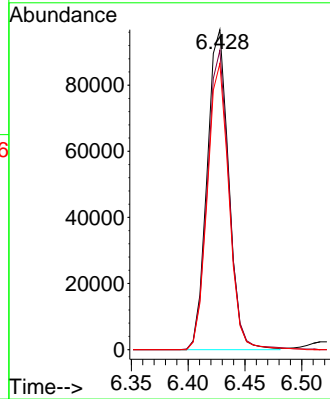
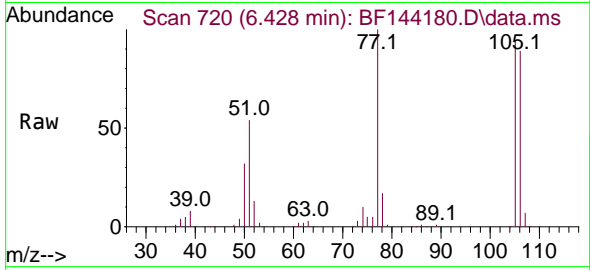




#9
Benzaldehyde
Concen: 40.527 ng
RT: 6.428 min Scan# 720
Delta R.T. 0.000 min
Lab File: BF144180.D
Acq: 06 Nov 2025 11:13

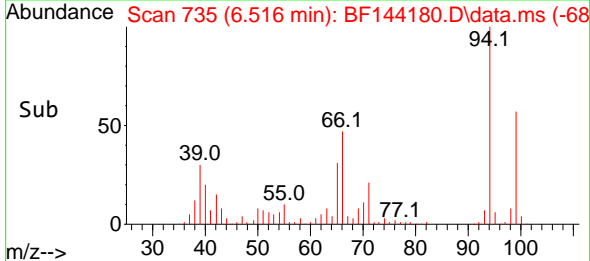
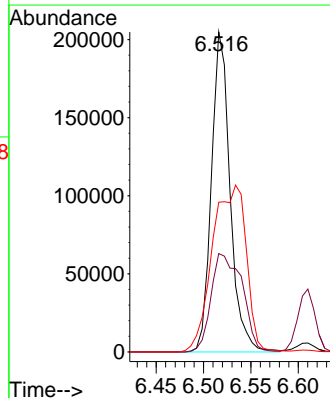
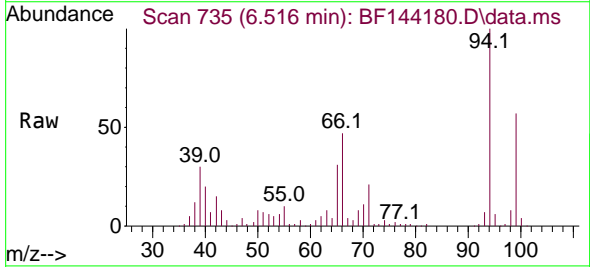
Instrument :
BNA_F
ClientSampleId :
SSTDCCC040

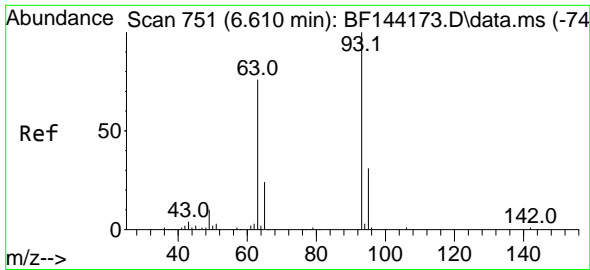
Tgt Ion: 77 Resp: 127860
Ion Ratio Lower Upper
77 100
105 93.5 77.2 117.2
106 89.4 72.2 112.2



#10
Phenol
Concen: 41.213 ng
RT: 6.516 min Scan# 735
Delta R.T. 0.006 min
Lab File: BF144180.D
Acq: 06 Nov 2025 11:13

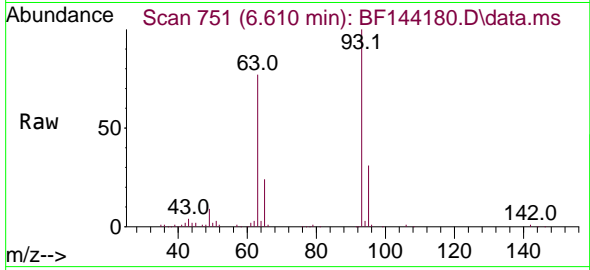
Tgt Ion: 94 Resp: 281330
Ion Ratio Lower Upper
94 100
65 30.7 10.8 50.8
66 46.8 24.3 64.3



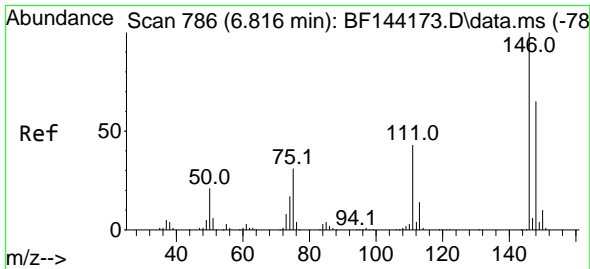
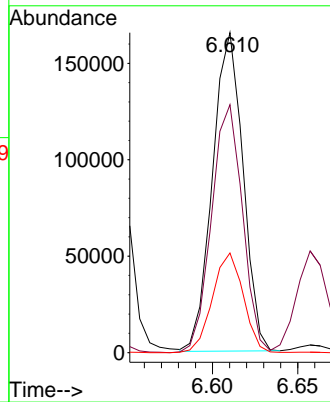
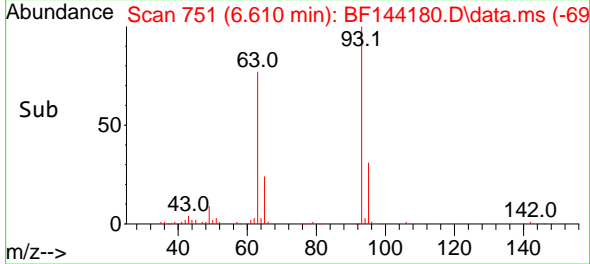


#11
 bis(2-Chloroethyl)ether
 Concen: 41.344 ng
 RT: 6.610 min Scan# 751
 Delta R.T. 0.006 min
 Lab File: BF144180.D
 Acq: 06 Nov 2025 11:13

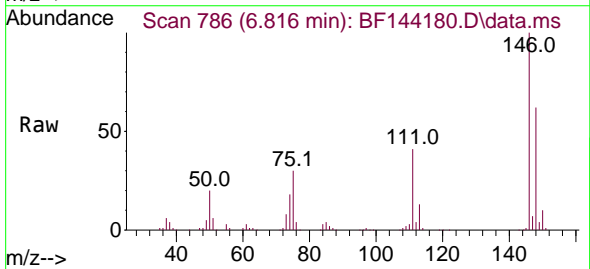
Instrument : BNA_F
 ClientSampleId : SSTDCCC040



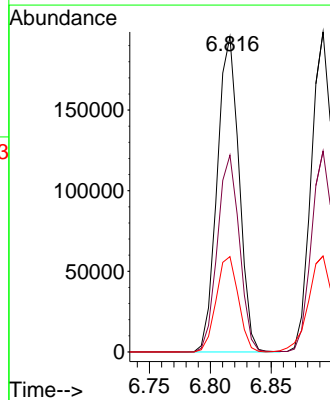
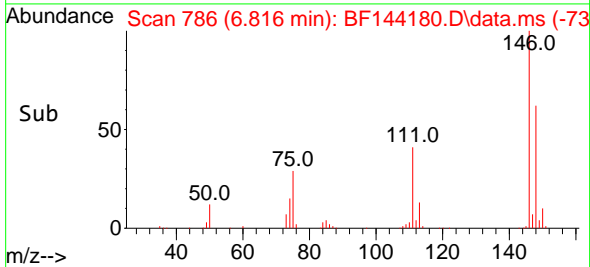
Tgt Ion: 93 Resp: 205644
 Ion Ratio Lower Upper
 93 100
 63 77.5 55.2 95.2
 95 31.1 11.2 51.2

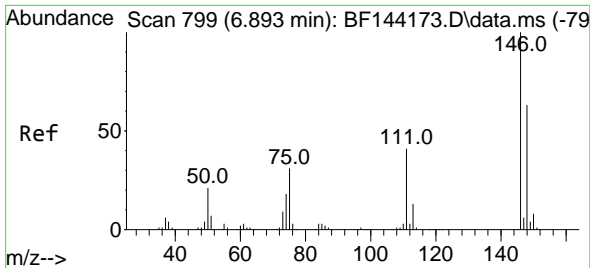


#12
 1,3-Dichlorobenzene
 Concen: 40.996 ng
 RT: 6.816 min Scan# 786
 Delta R.T. -0.000 min
 Lab File: BF144180.D
 Acq: 06 Nov 2025 11:13



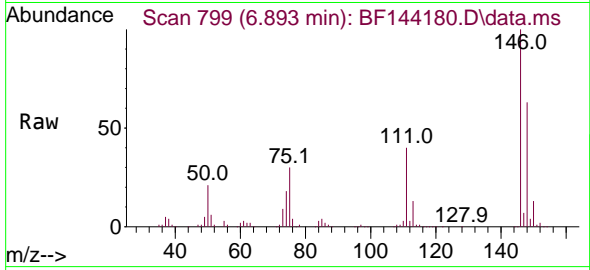
Tgt Ion:146 Resp: 244627
 Ion Ratio Lower Upper
 146 100
 148 62.4 51.8 77.8
 75 30.3 25.0 37.4



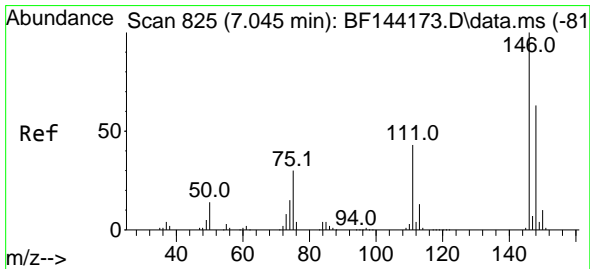
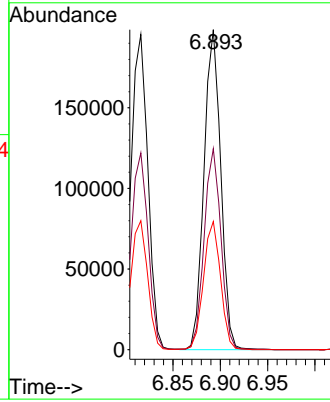
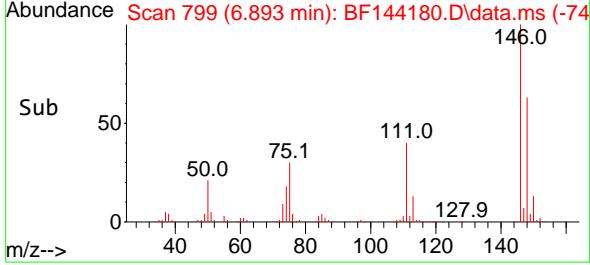


#13
 1,4-Dichlorobenzene
 Concen: 41.015 ng
 RT: 6.893 min Scan# 799
 Delta R.T. -0.000 min
 Lab File: BF144180.D
 Acq: 06 Nov 2025 11:13

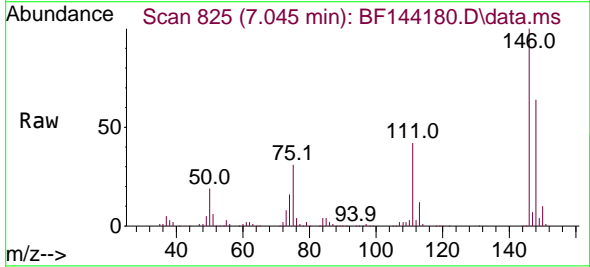
Instrument :
 BNA_F
 ClientSampleId :
 SSTDCCC040



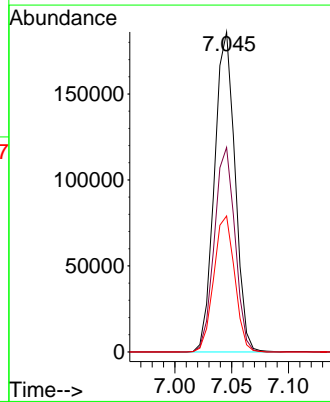
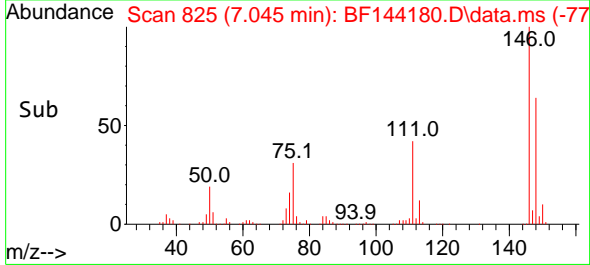
Tgt Ion:146 Resp: 245191
 Ion Ratio Lower Upper
 146 100
 148 62.8 50.2 75.2
 111 40.0 32.6 48.8

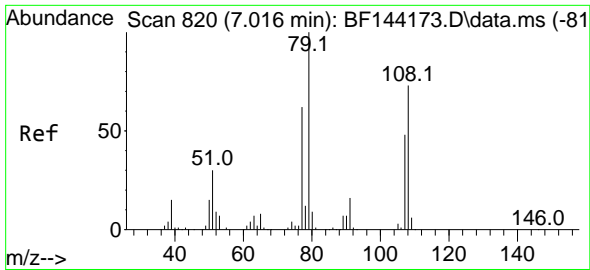


#14
 1,2-Dichlorobenzene
 Concen: 40.987 ng
 RT: 7.045 min Scan# 825
 Delta R.T. -0.000 min
 Lab File: BF144180.D
 Acq: 06 Nov 2025 11:13



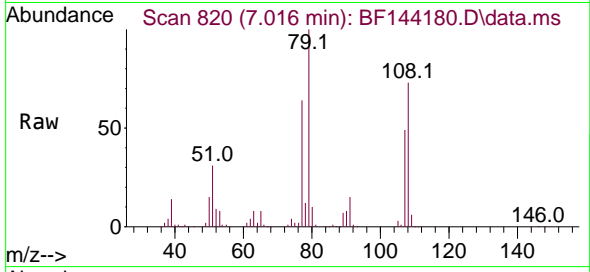
Tgt Ion:146 Resp: 234848
 Ion Ratio Lower Upper
 146 100
 148 63.9 50.7 76.1
 111 42.5 34.2 51.4



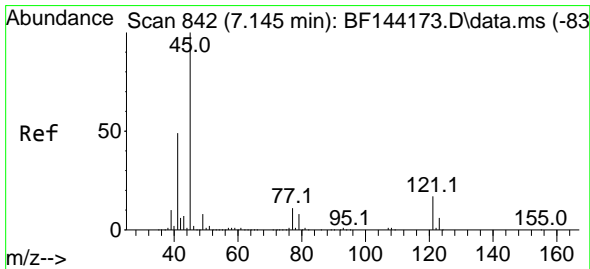
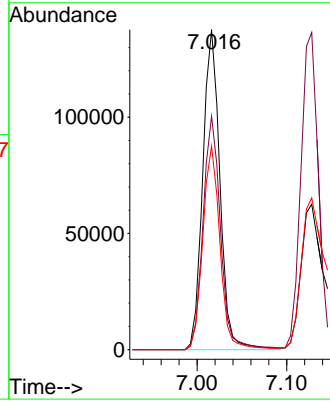
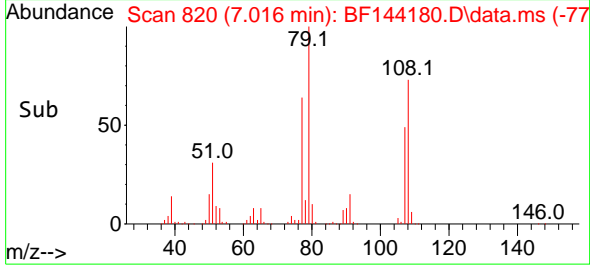


#15
 Benzyl Alcohol
 Concen: 41.394 ng
 RT: 7.016 min Scan# 81
 Delta R.T. -0.006 min
 Lab File: BF144180.D
 Acq: 06 Nov 2025 11:13

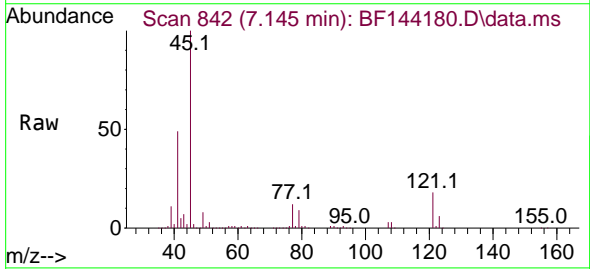
Instrument :
 BNA_F
 ClientSampleId :
 SSTDCCC040



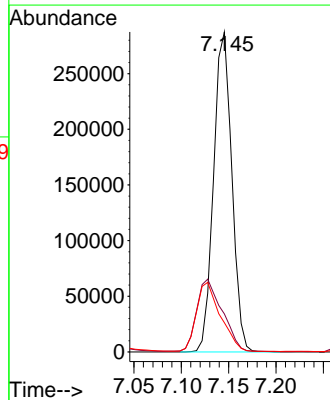
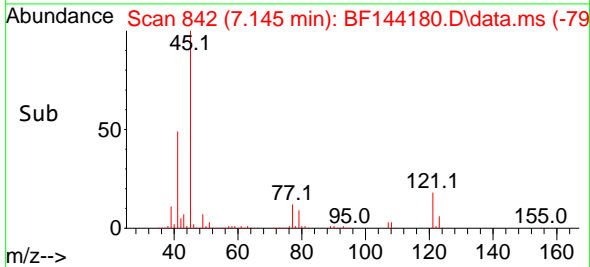
Tgt Ion: 79 Resp: 183128
 Ion Ratio Lower Upper
 79 100
 108 72.9 58.2 87.4
 77 63.6 49.9 74.9

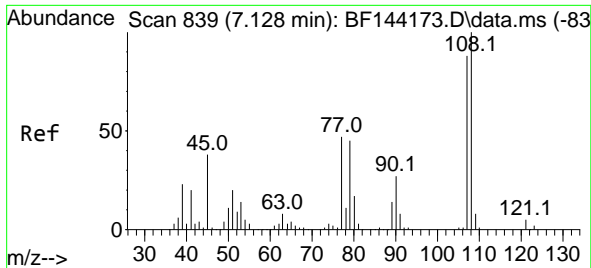


#16
 2,2'-oxybis(1-Chloropropane)
 Concen: 42.021 ng
 RT: 7.145 min Scan# 842
 Delta R.T. 0.006 min
 Lab File: BF144180.D
 Acq: 06 Nov 2025 11:13



Tgt Ion: 45 Resp: 384897
 Ion Ratio Lower Upper
 45 100
 77 11.9 0.0 31.8
 79 9.1 0.0 29.1

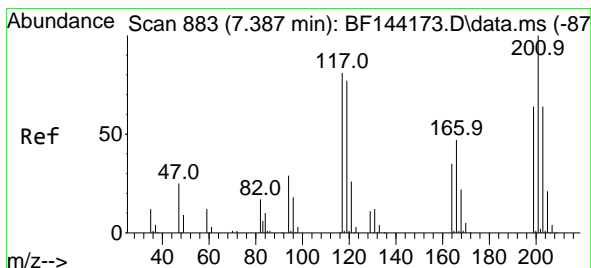
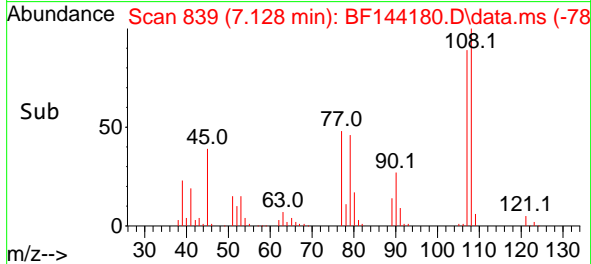
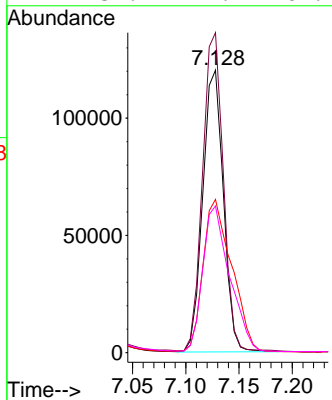
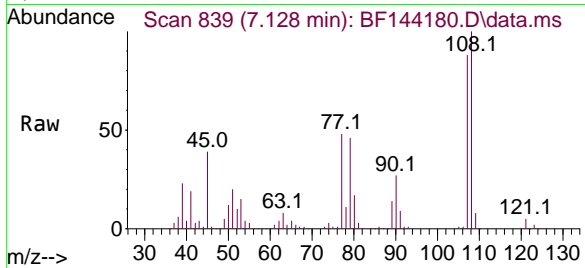




#17
 2-Methylphenol
 Concen: 42.052 ng
 RT: 7.128 min Scan# 839
 Delta R.T. 0.006 min
 Lab File: BF144180.D
 Acq: 06 Nov 2025 11:13

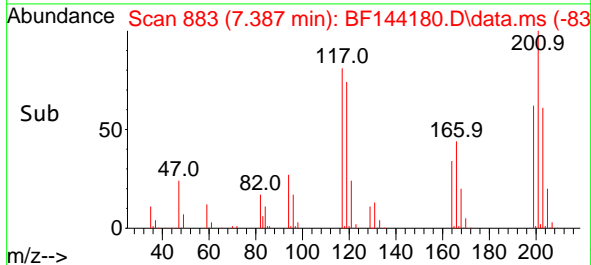
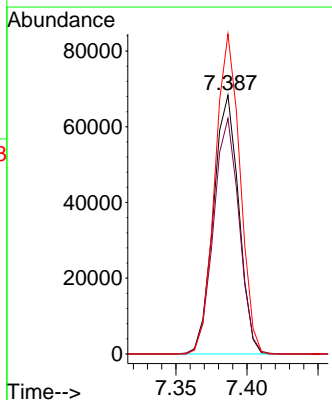
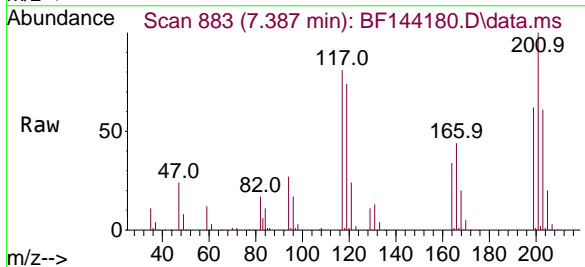
Instrument :
 BNA_F
 ClientSampleId :
 SSTDCCC040

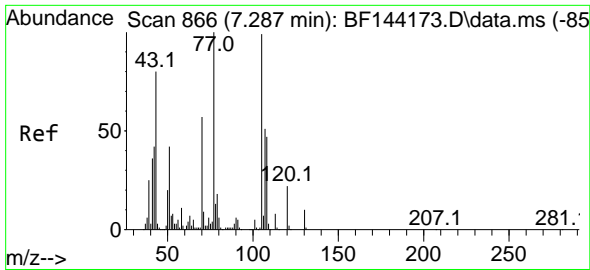
Tgt Ion	Resp	Lower	Upper
107	161770		
107	100		
108	113.3	91.0	136.4
77	54.2	42.7	64.1
79	51.9	41.4	62.2



#18
 Hexachloroethane
 Concen: 42.545 ng
 RT: 7.387 min Scan# 883
 Delta R.T. -0.000 min
 Lab File: BF144180.D
 Acq: 06 Nov 2025 11:13

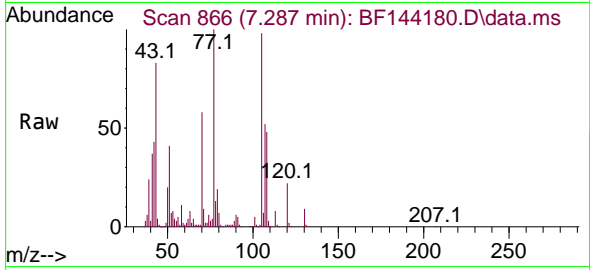
Tgt Ion	Resp	Lower	Upper
117	84498		
117	100		
119	91.0	75.8	113.8
201	123.7	98.9	148.3





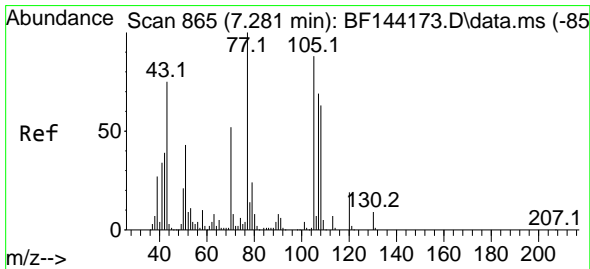
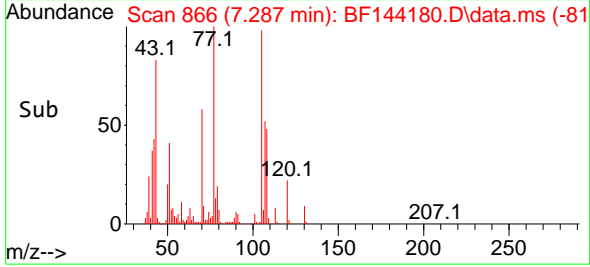
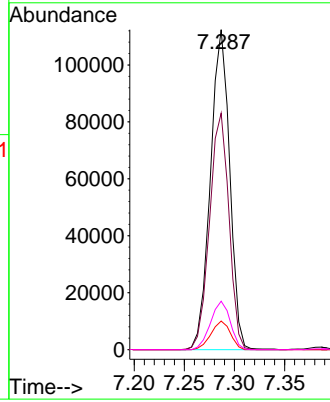
#19
 n-Nitroso-di-n-propylamine
 Concen: 40.835 ng
 RT: 7.287 min Scan# 866
 Delta R.T. 0.012 min
 Lab File: BF144180.D
 Acq: 06 Nov 2025 11:13

Instrument :
 BNA_F
 ClientSampleId :
 SSTDCCC040

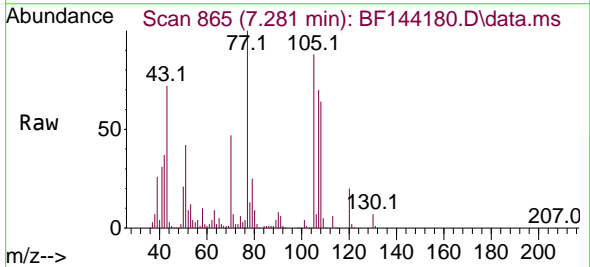


Tgt Ion: 70 Resp: 150190

Ion	Ratio	Lower	Upper
70	100		
42	73.9	58.3	87.5
101	8.9	7.0	10.6
130	15.1	14.4	21.6

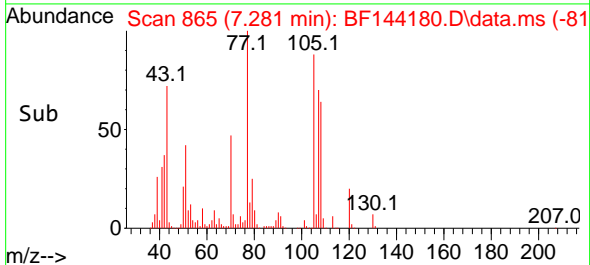
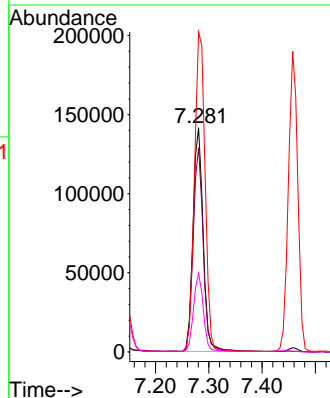


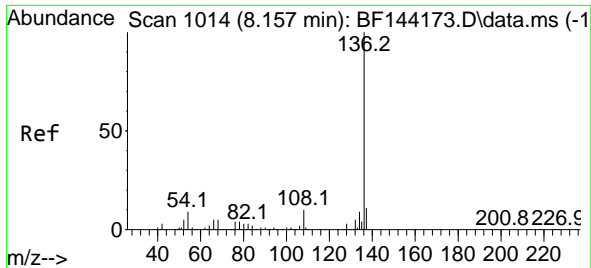
#20
 3+4-Methylphenols
 Concen: 41.326 ng
 RT: 7.281 min Scan# 865
 Delta R.T. -0.006 min
 Lab File: BF144180.D
 Acq: 06 Nov 2025 11:13



Tgt Ion: 107 Resp: 187407

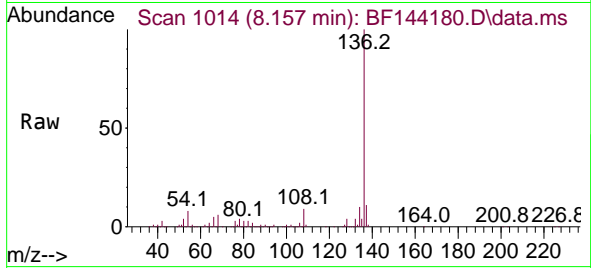
Ion	Ratio	Lower	Upper
107	100		
108	91.1	70.2	110.2
77	142.8	123.9	163.9
79	35.1	14.2	54.2



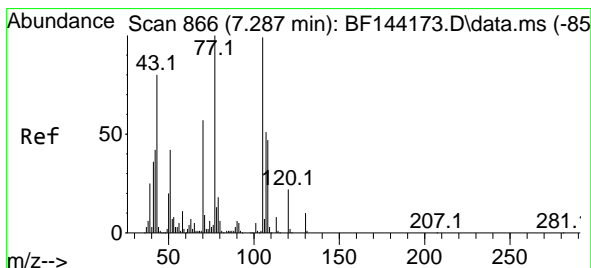
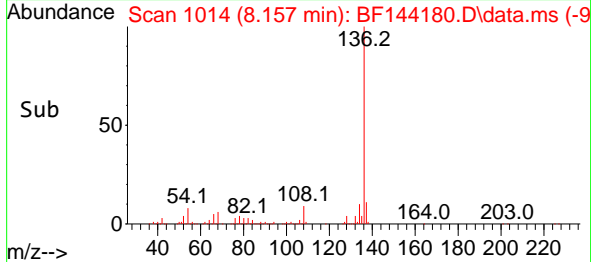
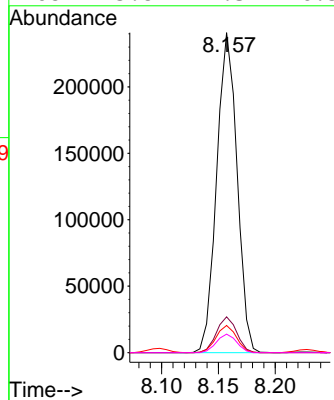


#21
 Naphthalene-d8
 Concen: 20.000 ng
 RT: 8.157 min Scan# 1014
 Delta R.T. -0.000 min
 Lab File: BF144180.D
 Acq: 06 Nov 2025 11:13

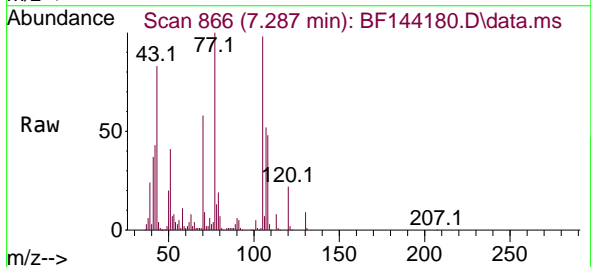
Instrument :
 BNA_F
 ClientSampleId :
 SSTDCCC040



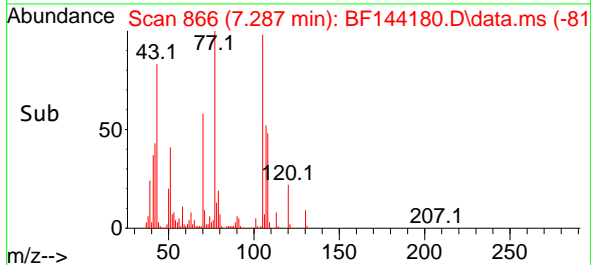
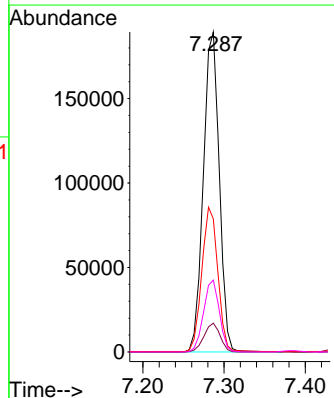
Tgt Ion:136 Resp: 299960
 Ion Ratio Lower Upper
 136 100
 137 11.2 8.6 13.0
 54 8.5 7.0 10.6
 68 5.8 4.3 6.5

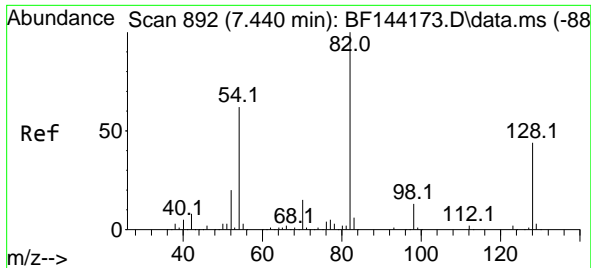


#22
 Acetophenone
 Concen: 40.160 ng
 RT: 7.287 min Scan# 866
 Delta R.T. 0.006 min
 Lab File: BF144180.D
 Acq: 06 Nov 2025 11:13



Tgt Ion:105 Resp: 258423
 Ion Ratio Lower Upper
 105 100
 71 9.0 7.2 10.8
 51 41.6 34.0 51.0
 120 22.4 17.8 26.6



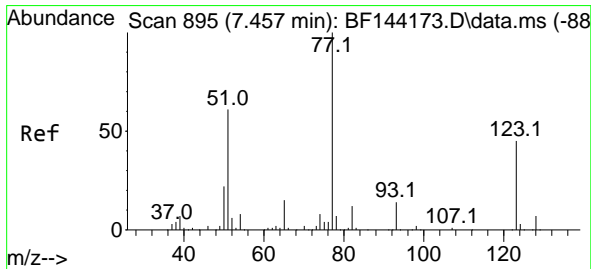
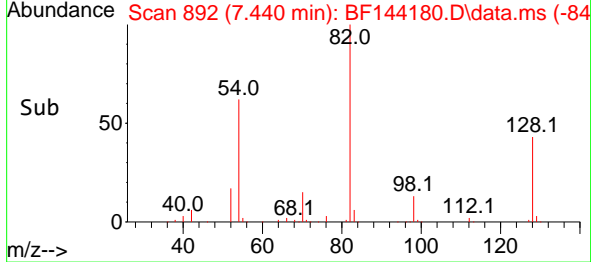
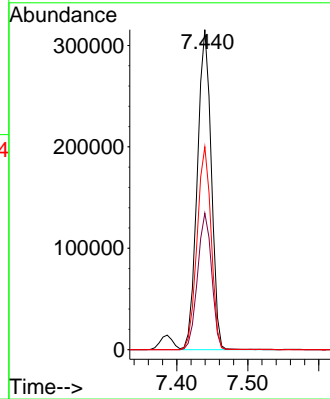
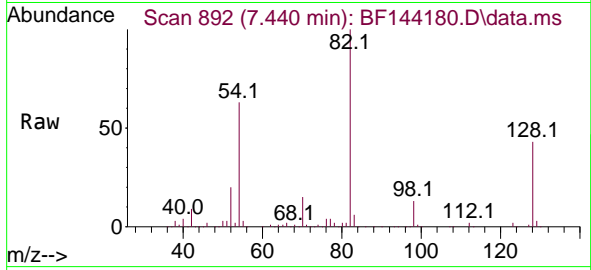


#23
 Nitrobenzene-d5
 Concen: 82.851 ng
 RT: 7.440 min Scan# 895
 Delta R.T. 0.006 min
 Lab File: BF144180.D
 Acq: 06 Nov 2025 11:13

Instrument : BNA_F
 Client Sample Id : SSTDCCC040

Tgt Ion: 82 Resp: 430300

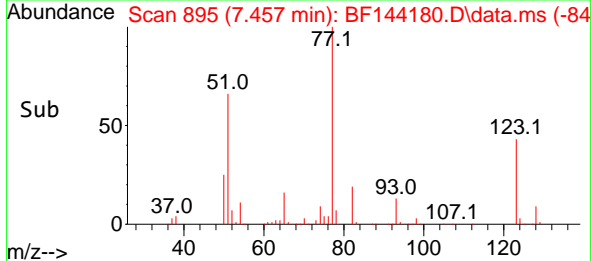
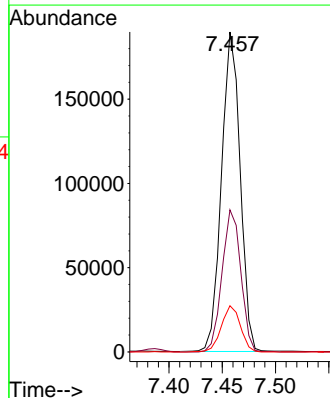
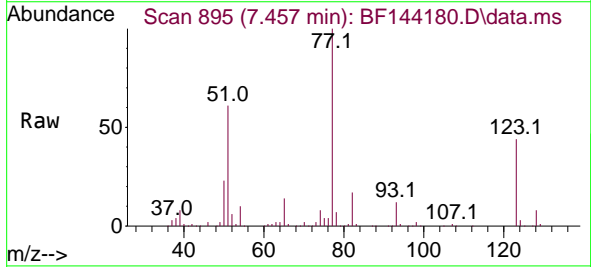
Ion	Ratio	Lower	Upper
82	100		
128	42.6	34.7	52.1
54	63.4	49.5	74.3

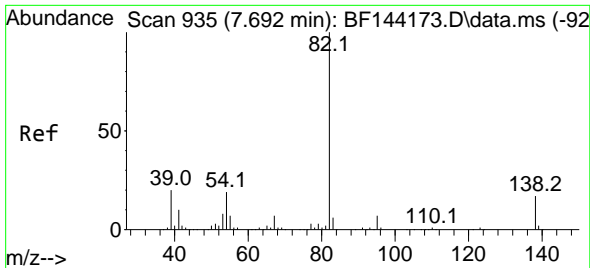


#24
 Nitrobenzene
 Concen: 41.043 ng
 RT: 7.457 min Scan# 895
 Delta R.T. 0.006 min
 Lab File: BF144180.D
 Acq: 06 Nov 2025 11:13

Tgt Ion: 77 Resp: 231445

Ion	Ratio	Lower	Upper
77	100		
123	44.4	35.8	53.8
65	14.4	12.2	18.2



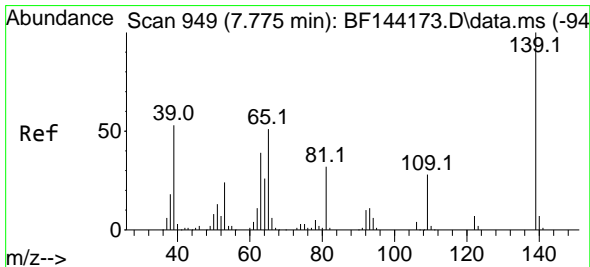
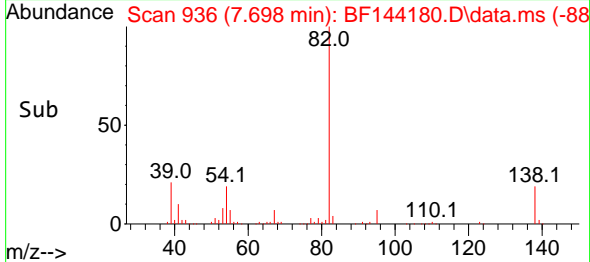
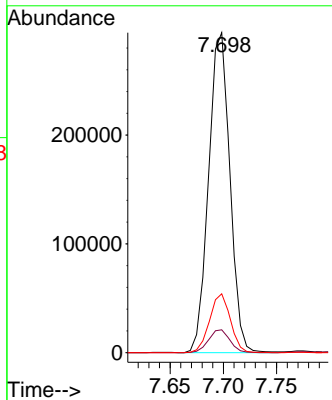
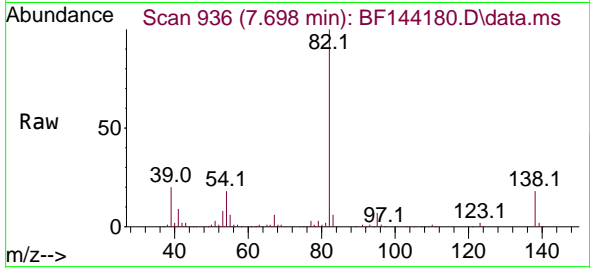


#25
 Isophorone
 Concen: 41.720 ng
 RT: 7.698 min Scan# 936
 Delta R.T. 0.012 min
 Lab File: BF144180.D
 Acq: 06 Nov 2025 11:13

Instrument : BNA_F
 ClientSampleId : SSTDCCC040

Tgt Ion: 82 Resp: 409848

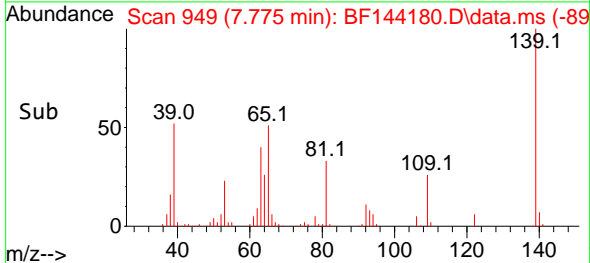
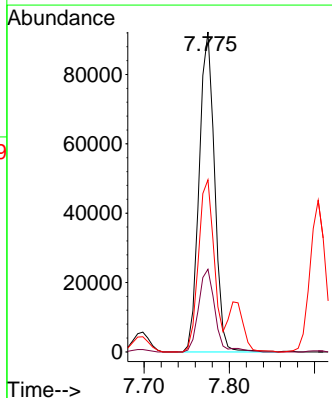
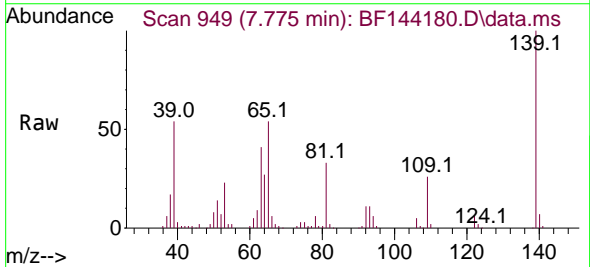
Ion	Ratio	Lower	Upper
82	100		
95	7.1	5.5	8.3
138	18.4	13.7	20.5

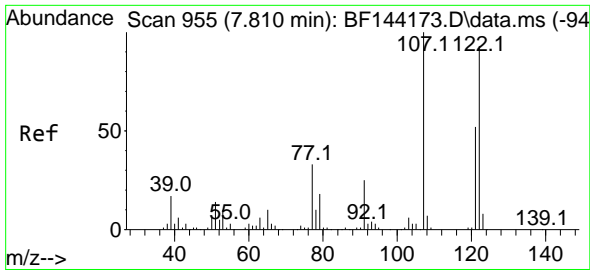


#26
 2-Nitrophenol
 Concen: 41.604 ng
 RT: 7.775 min Scan# 949
 Delta R.T. -0.000 min
 Lab File: BF144180.D
 Acq: 06 Nov 2025 11:13

Tgt Ion: 139 Resp: 116137

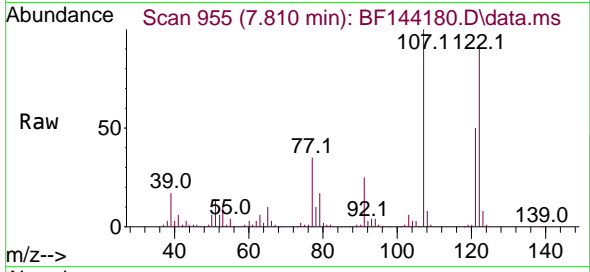
Ion	Ratio	Lower	Upper
139	100		
109	25.8	22.2	33.2
65	53.8	40.7	61.1



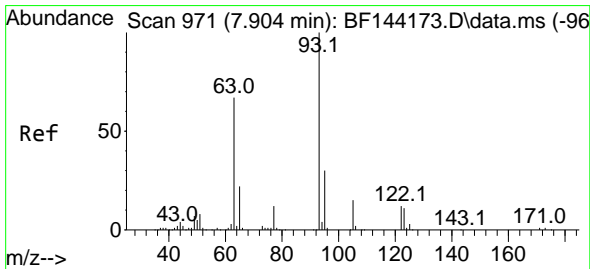
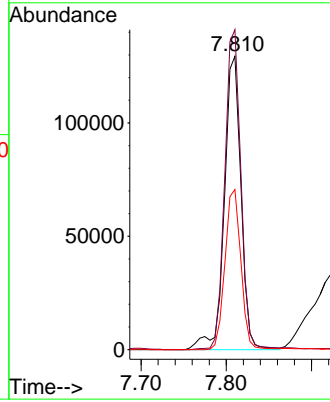
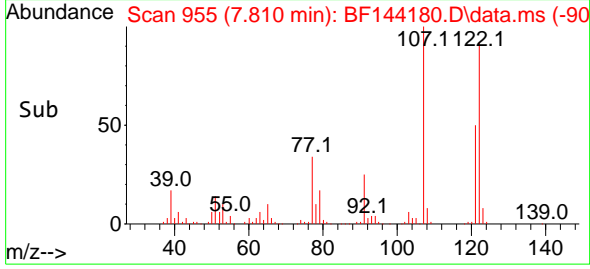


#27
 2,4-Dimethylphenol
 Concen: 42.022 ng
 RT: 7.810 min Scan# 911
 Delta R.T. 0.006 min
 Lab File: BF144180.D
 Acq: 06 Nov 2025 11:13

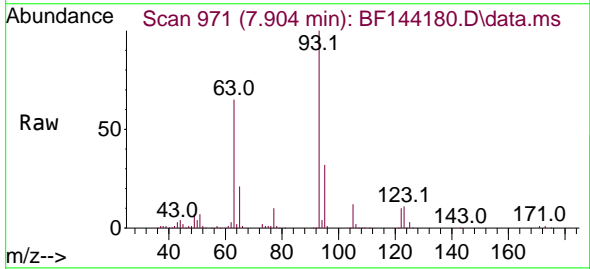
Instrument :
 BNA_F
 ClientSampleId :
 SSTDCCC040



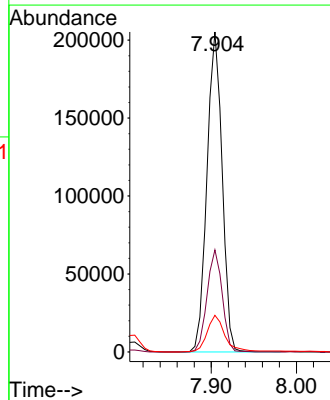
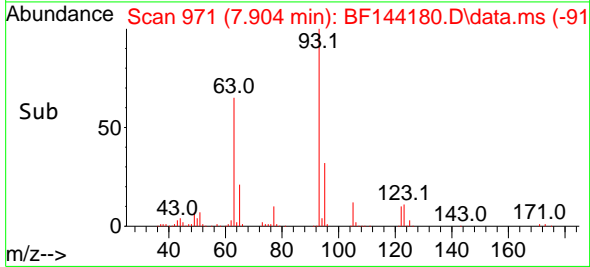
Tgt Ion:122 Resp: 175819
 Ion Ratio Lower Upper
 122 100
 107 109.1 86.2 129.4
 121 54.6 44.6 66.8

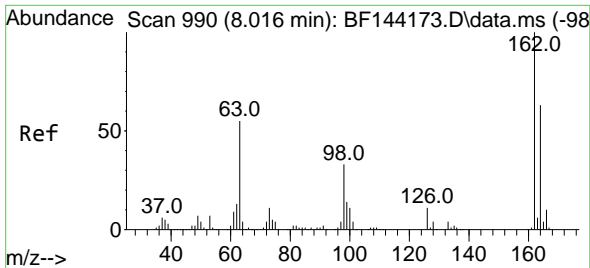


#28
 bis(2-Chloroethoxy)methane
 Concen: 41.408 ng
 RT: 7.904 min Scan# 971
 Delta R.T. 0.006 min
 Lab File: BF144180.D
 Acq: 06 Nov 2025 11:13



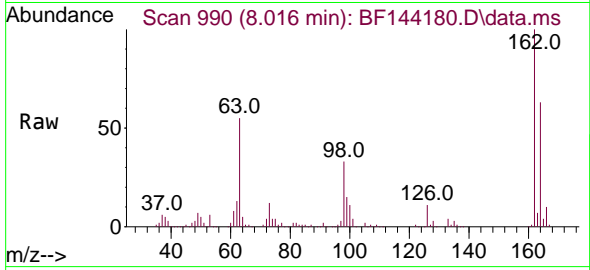
Tgt Ion: 93 Resp: 254021
 Ion Ratio Lower Upper
 93 100
 95 31.9 24.2 36.4
 123 11.4 9.0 13.4





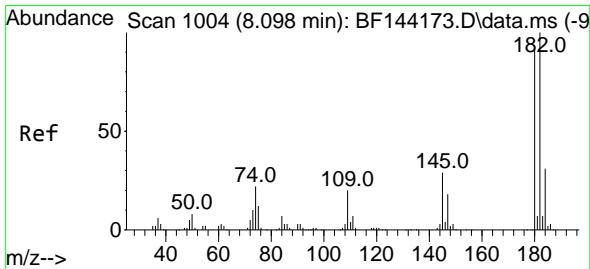
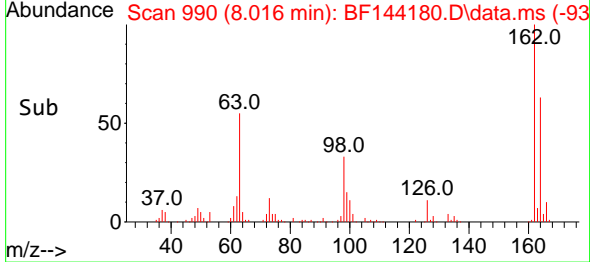
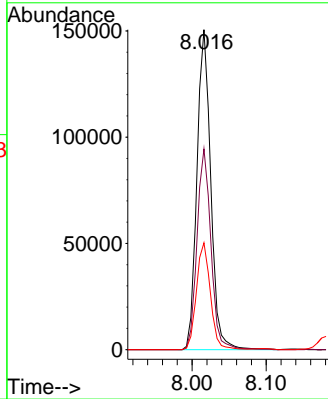
#29
 2,4-Dichlorophenol
 Concen: 40.470 ng
 RT: 8.016 min Scan# 990
 Delta R.T. -0.000 min
 Lab File: BF144180.D
 Acq: 06 Nov 2025 11:13

Instrument : BNA_F
 ClientSampleId : SSTDCCC040



Tgt Ion:162 Resp: 195158

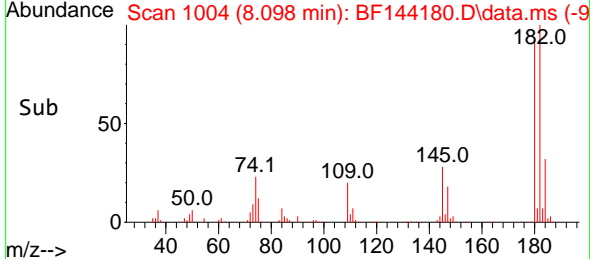
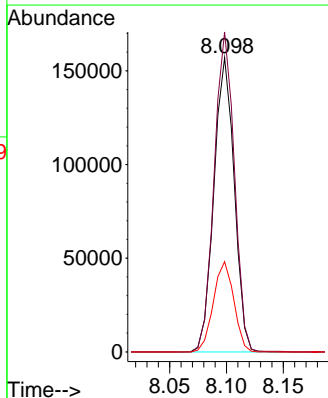
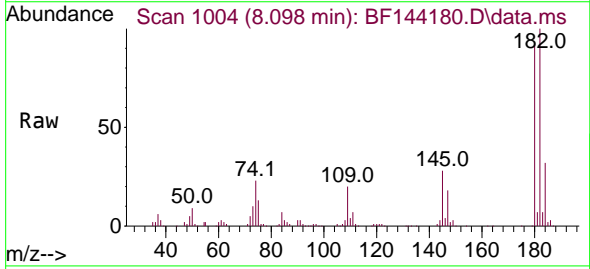
Ion	Ratio	Lower	Upper
162	100		
164	62.7	42.9	82.9
98	33.4	13.3	53.3

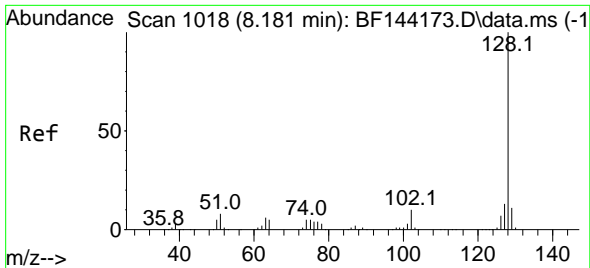


#30
 1,2,4-Trichlorobenzene
 Concen: 39.427 ng
 RT: 8.098 min Scan# 1004
 Delta R.T. -0.000 min
 Lab File: BF144180.D
 Acq: 06 Nov 2025 11:13

Tgt Ion:180 Resp: 195235

Ion	Ratio	Lower	Upper
180	100		
182	108.8	87.7	131.5
145	30.6	25.4	38.0

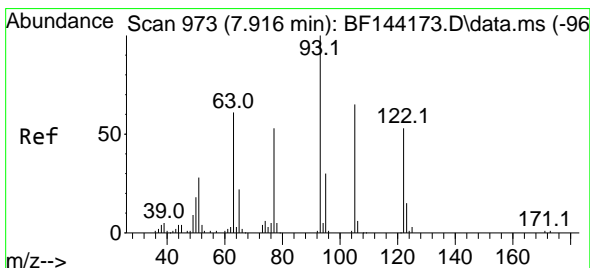
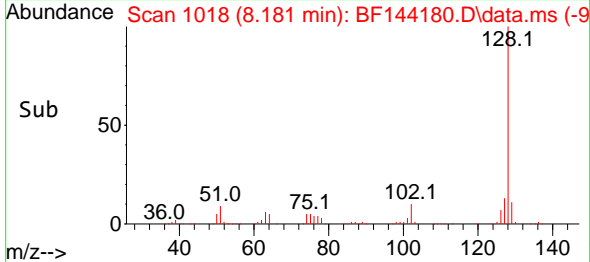
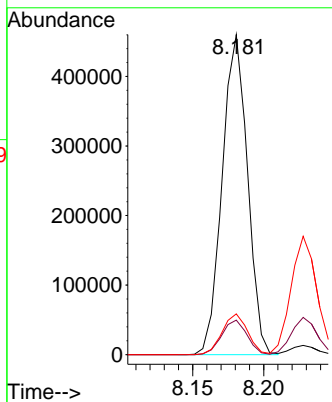
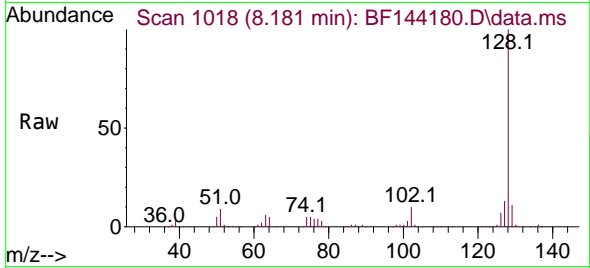




#31
 Naphthalene
 Concen: 39.968 ng
 RT: 8.181 min Scan# 10
 Delta R.T. 0.006 min
 Lab File: BF144180.D
 Acq: 06 Nov 2025 11:13

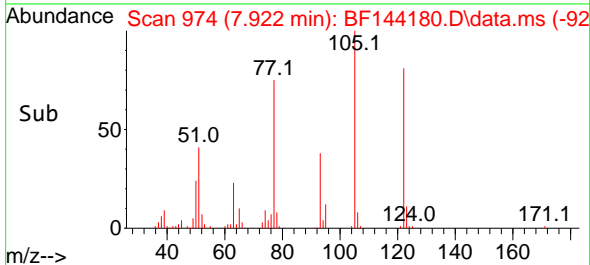
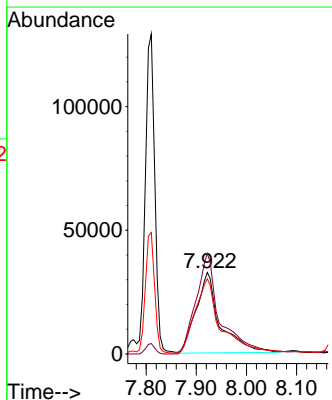
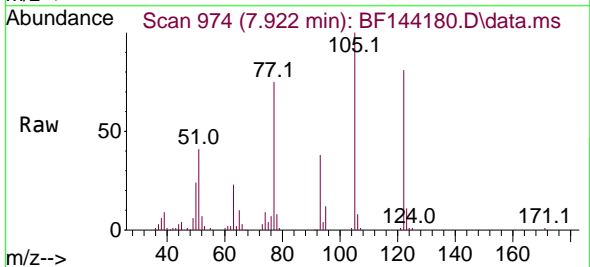
Instrument : BNA_F
 ClientSampleId : SSTDCCC040

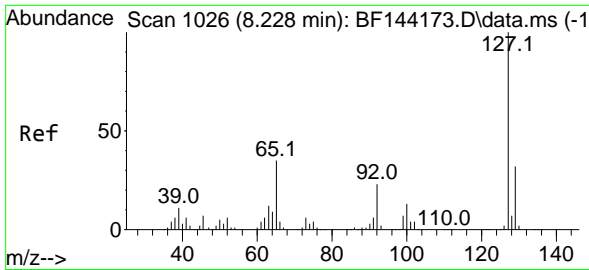
Tgt Ion	Resp	Lower	Upper
128	100		
129	10.8	8.9	13.3
127	12.7	10.3	15.5



#32
 Benzoic acid
 Concen: 35.315 ng
 RT: 7.922 min Scan# 974
 Delta R.T. -0.029 min
 Lab File: BF144180.D
 Acq: 06 Nov 2025 11:13

Tgt Ion	Resp	Lower	Upper
122	100		
105	123.4	99.9	139.9
77	92.2	77.5	117.5



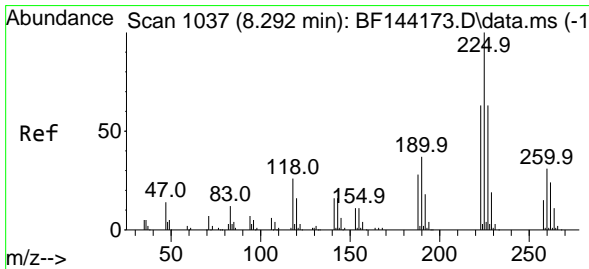
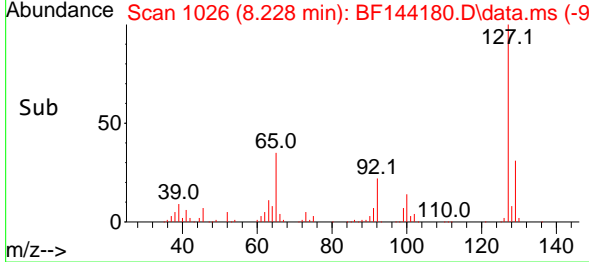
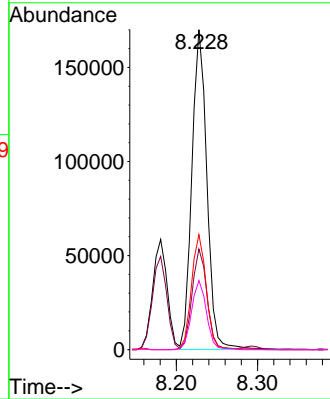
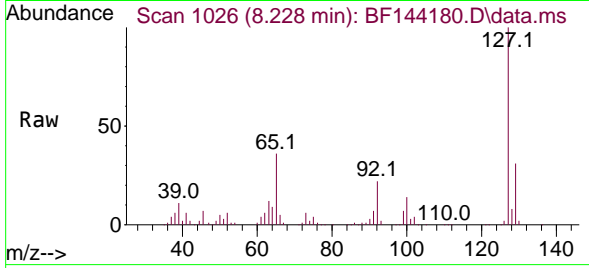


#33
 4-Chloroaniline
 Concen: 41.738 ng
 RT: 8.228 min Scan# 1037
 Delta R.T. -0.000 min
 Lab File: BF144180.D
 Acq: 06 Nov 2025 11:13

Instrument : BNA_F
 ClientSampleId : SSTDCCC040

Tgt Ion:127 Resp: 217206

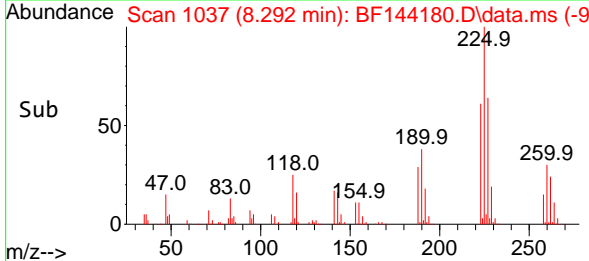
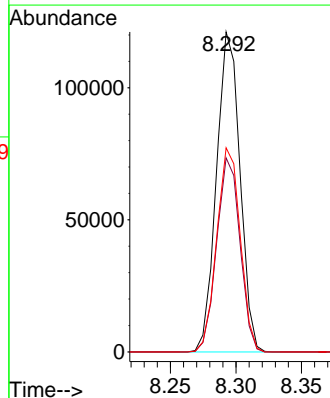
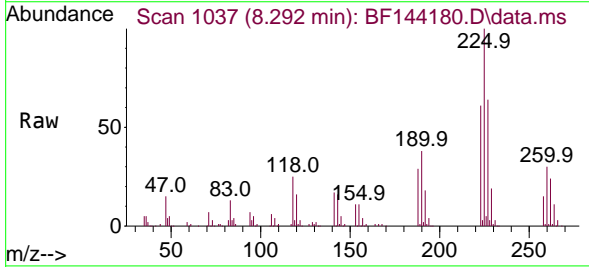
Ion	Ratio	Lower	Upper
127	100		
129	31.4	25.3	37.9
65	35.9	27.6	41.4
92	21.6	18.4	27.6

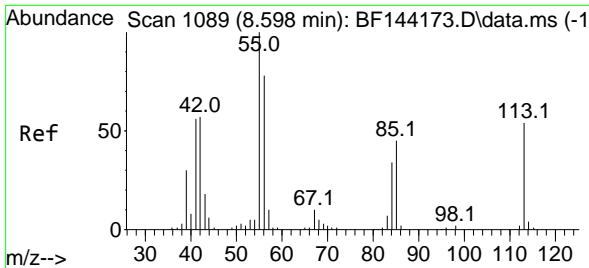


#34
 Hexachlorobutadiene
 Concen: 40.500 ng
 RT: 8.292 min Scan# 1037
 Delta R.T. -0.000 min
 Lab File: BF144180.D
 Acq: 06 Nov 2025 11:13

Tgt Ion:225 Resp: 151142

Ion	Ratio	Lower	Upper
225	100		
223	60.6	50.2	75.4
227	63.8	50.1	75.1

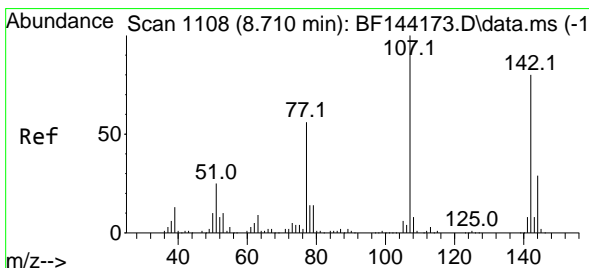
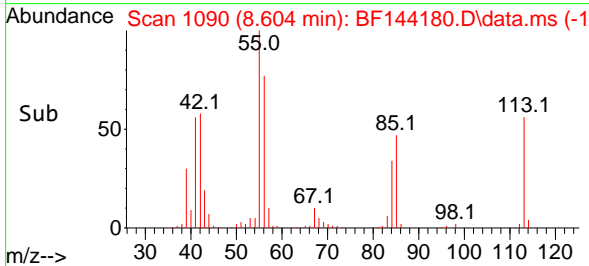
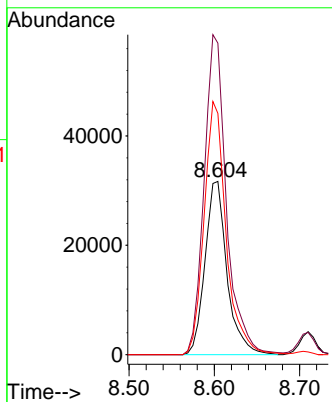
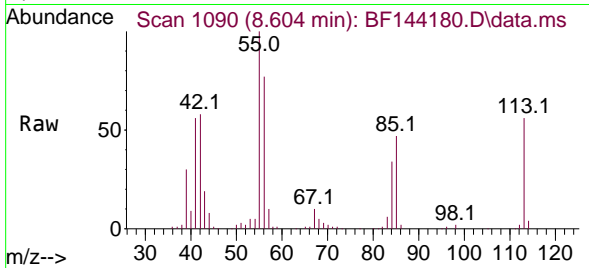




#35
 Caprolactam
 Concen: 43.048 ng
 RT: 8.604 min Scan# 1089
 Delta R.T. -0.018 min
 Lab File: BF144180.D
 Acq: 06 Nov 2025 11:13

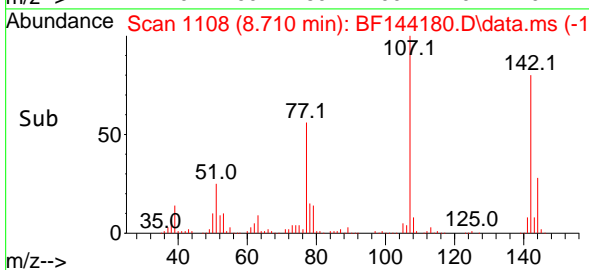
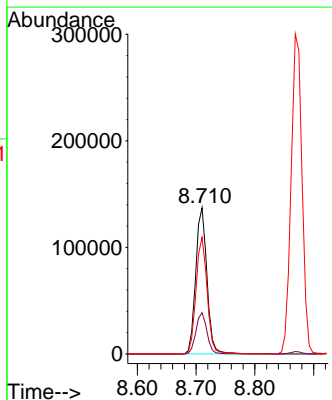
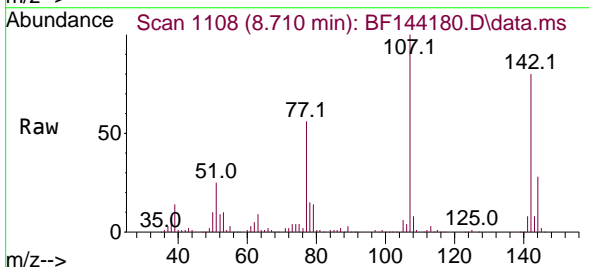
Instrument :
 BNA_F
 ClientSampleId :
 SSTDCCC040

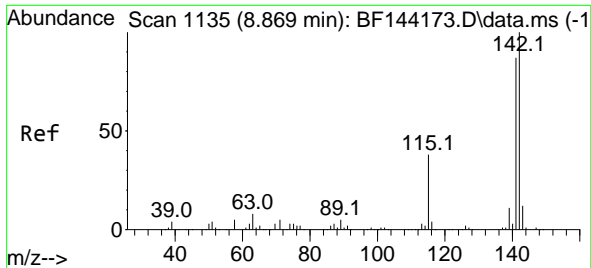
Tgt Ion:113 Resp: 56873
 Ion Ratio Lower Upper
 113 100
 55 179.9 166.8 206.8
 56 139.3 125.9 165.9



#36
 4-Chloro-3-methylphenol
 Concen: 42.037 ng
 RT: 8.710 min Scan# 1108
 Delta R.T. 0.006 min
 Lab File: BF144180.D
 Acq: 06 Nov 2025 11:13

Tgt Ion:107 Resp: 181674
 Ion Ratio Lower Upper
 107 100
 144 28.2 23.3 34.9
 142 79.8 63.8 95.6





#37
 2-Methylnaphthalene
 Concen: 40.614 ng
 RT: 8.869 min Scan# 1135
 Delta R.T. -0.000 min
 Lab File: BF144180.D
 Acq: 06 Nov 2025 11:13

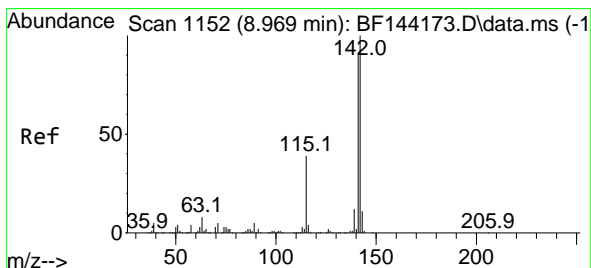
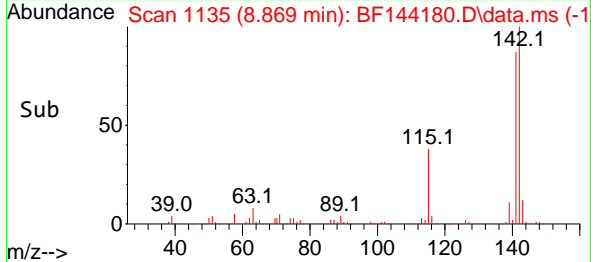
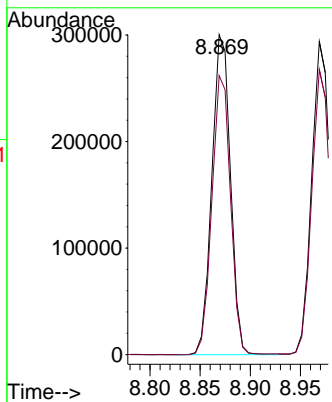
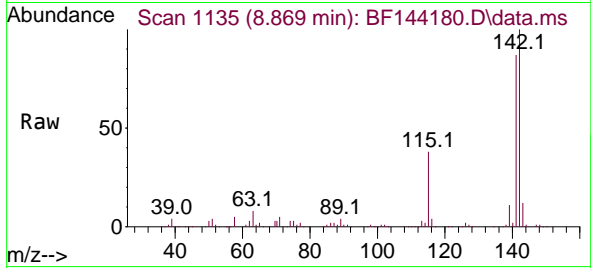
Instrument :

BNA_F

ClientSampleId :

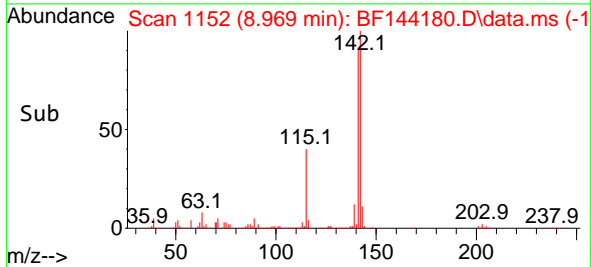
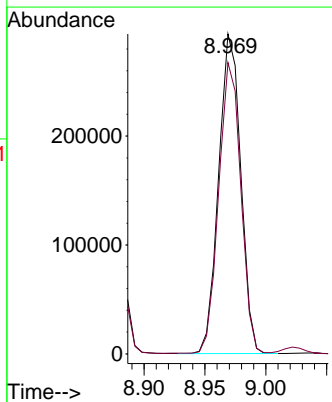
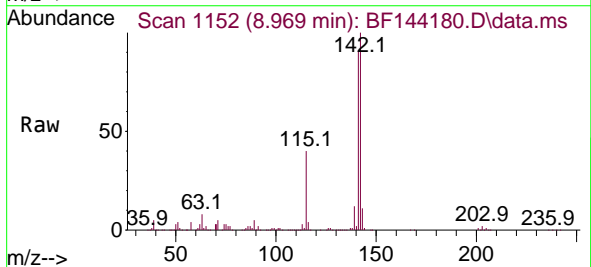
SSTDCCC040

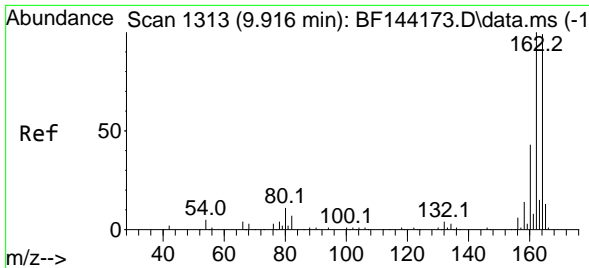
Tgt Ion:142 Resp: 387454
 Ion Ratio Lower Upper
 142 100
 141 87.2 69.9 104.9



#38
 1-Methylnaphthalene
 Concen: 40.136 ng
 RT: 8.969 min Scan# 1152
 Delta R.T. -0.000 min
 Lab File: BF144180.D
 Acq: 06 Nov 2025 11:13

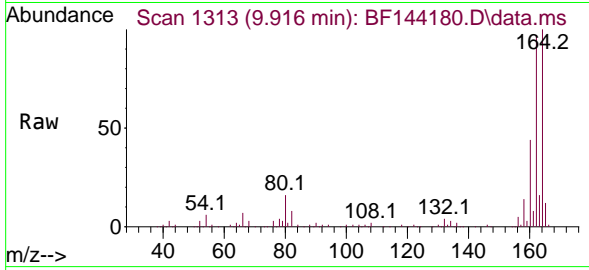
Tgt Ion:142 Resp: 369457
 Ion Ratio Lower Upper
 142 100
 141 91.0 72.1 108.1



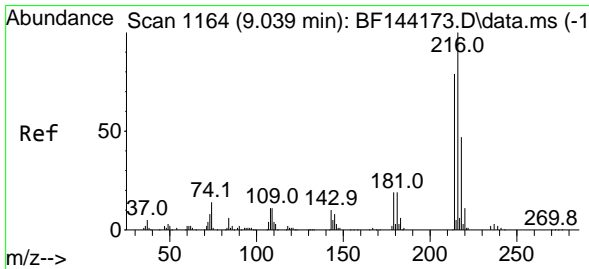
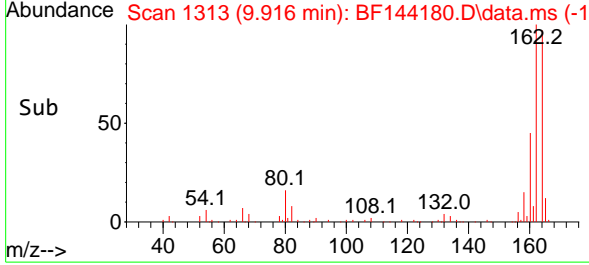
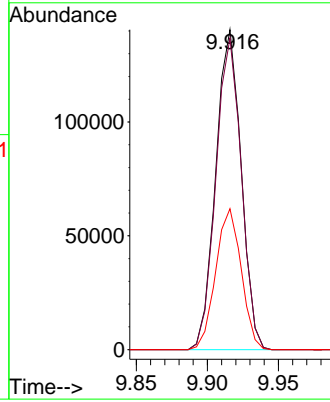


#39
 Acenaphthene-d10
 Concen: 20.000 ng
 RT: 9.916 min Scan# 1113
 Delta R.T. -0.000 min
 Lab File: BF144180.D
 Acq: 06 Nov 2025 11:13

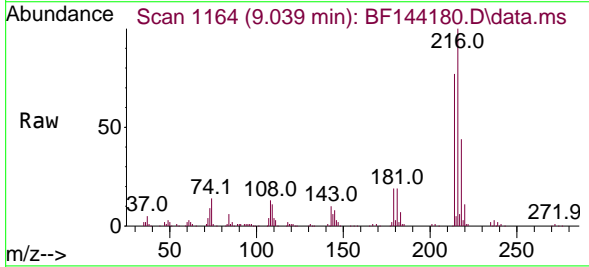
Instrument : BNA_F
 ClientSampleId : SSTDCCC040



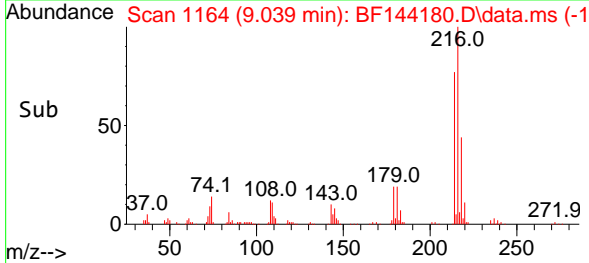
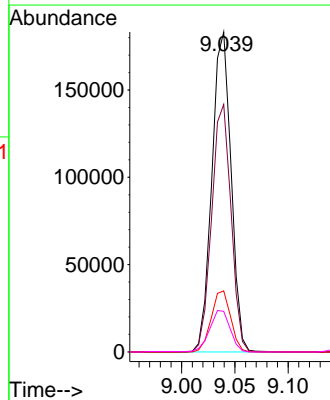
Tgt Ion:164 Resp: 175155
 Ion Ratio Lower Upper
 164 100
 162 97.3 81.1 121.7
 160 44.0 34.5 51.7

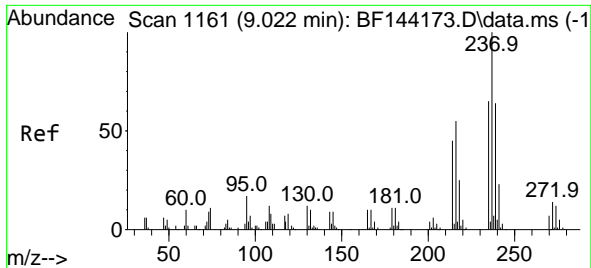


#40
 1,2,4,5-Tetrachlorobenzene
 Concen: 39.951 ng
 RT: 9.039 min Scan# 1164
 Delta R.T. 0.006 min
 Lab File: BF144180.D
 Acq: 06 Nov 2025 11:13



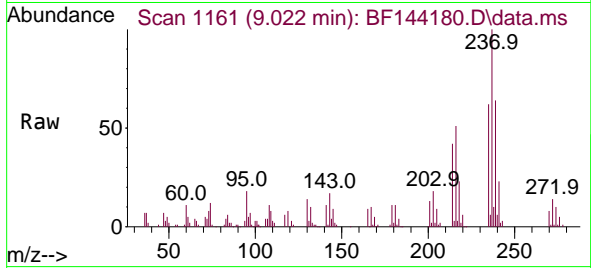
Tgt Ion:216 Resp: 229334
 Ion Ratio Lower Upper
 216 100
 214 78.0 63.4 95.2
 179 19.4 15.0 22.4
 108 13.8 10.5 15.7



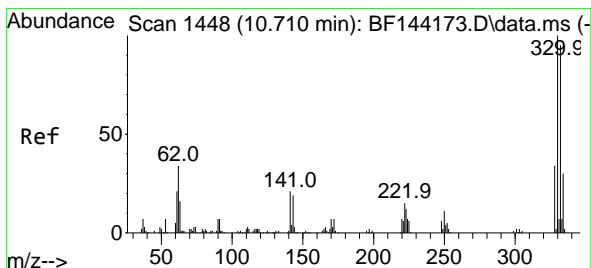
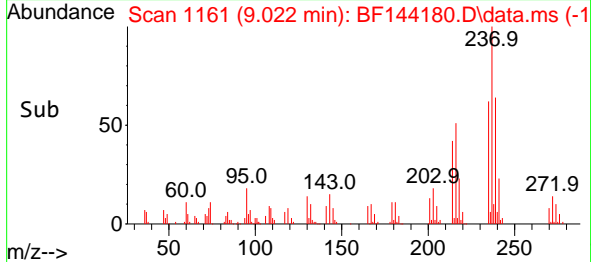
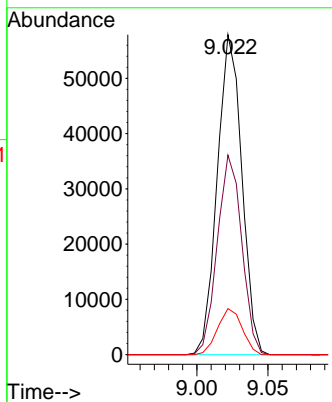


#41
 Hexachlorocyclopentadiene
 Concen: 39.826 ng
 RT: 9.022 min Scan# 1111
 Delta R.T. -0.006 min
 Lab File: BF144180.D
 Acq: 06 Nov 2025 11:13

Instrument :
 BNA_F
 ClientSampleId :
 SSTDCCC040

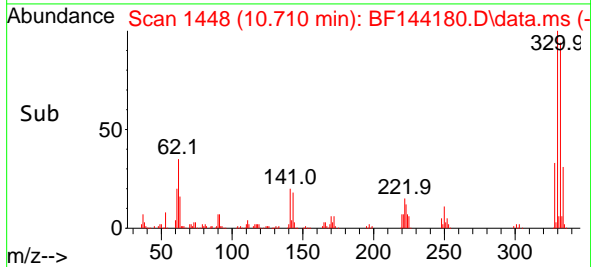
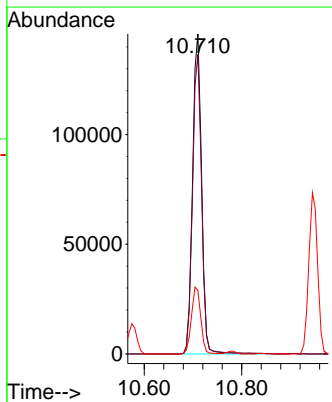
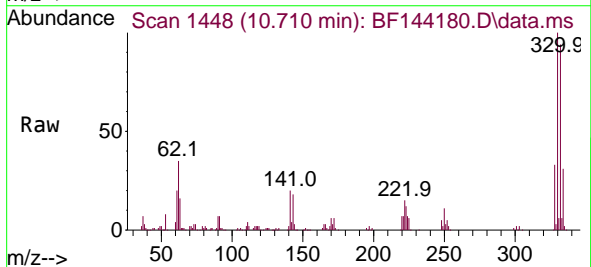


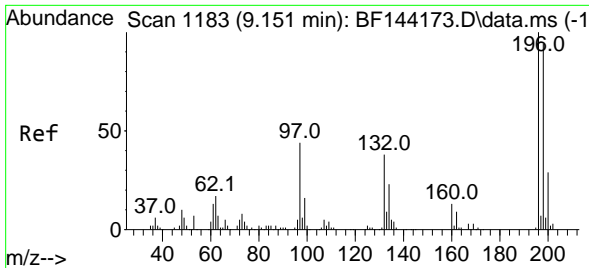
Tgt Ion:237 Resp: 69669
 Ion Ratio Lower Upper
 237 100
 235 62.3 45.5 85.5
 272 14.4 0.0 33.5



#42
 2,4,6-Tribromophenol
 Concen: 84.944 ng
 RT: 10.710 min Scan# 1448
 Delta R.T. 0.006 min
 Lab File: BF144180.D
 Acq: 06 Nov 2025 11:13

Tgt Ion:330 Resp: 186707
 Ion Ratio Lower Upper
 330 100
 332 93.8 76.7 115.1
 141 21.5 17.8 26.8



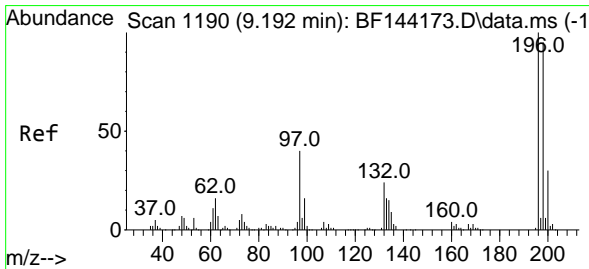
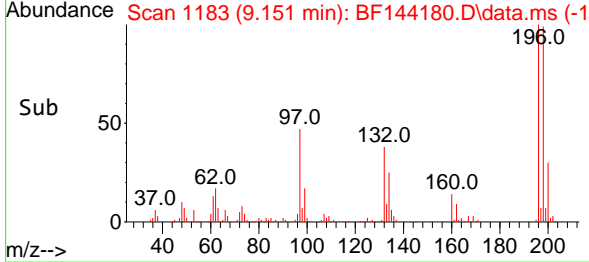
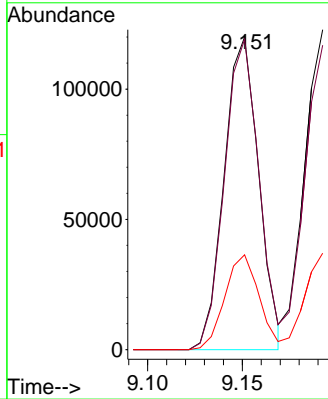
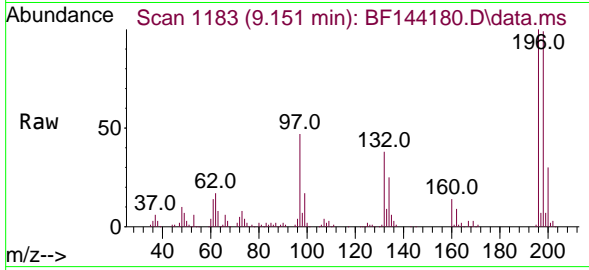


#43
 2,4,6-Trichlorophenol
 Concen: 38.933 ng
 RT: 9.151 min Scan# 1183
 Delta R.T. -0.000 min
 Lab File: BF144180.D
 Acq: 06 Nov 2025 11:13

Instrument : BNA_F
 ClientSampleId : SSTDCCC040

Tgt Ion:196 Resp: 152111

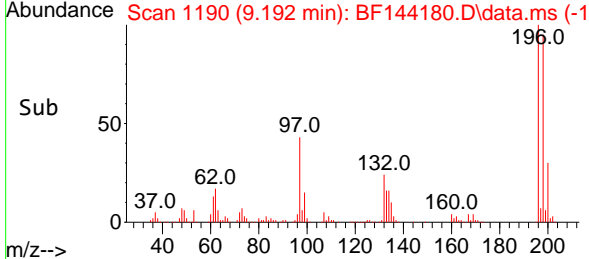
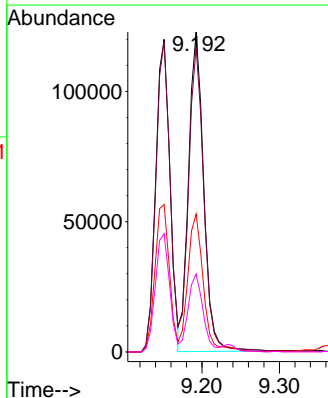
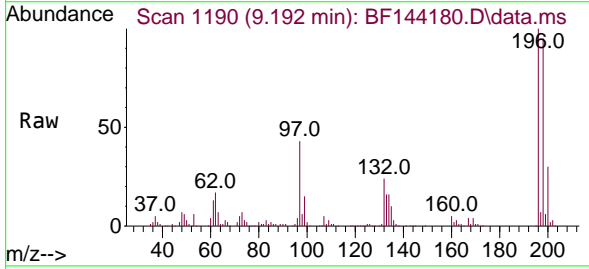
Ion	Ratio	Lower	Upper
196	100		
198	99.3	75.3	112.9
200	30.3	23.4	35.2

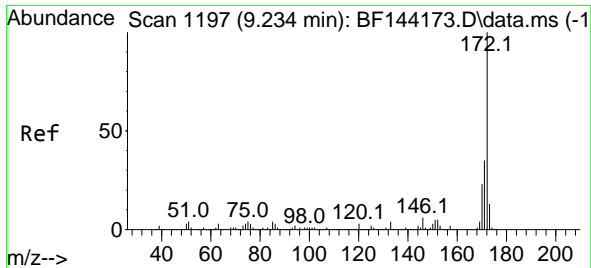


#44
 2,4,5-Trichlorophenol
 Concen: 39.644 ng
 RT: 9.192 min Scan# 1190
 Delta R.T. -0.000 min
 Lab File: BF144180.D
 Acq: 06 Nov 2025 11:13

Tgt Ion:196 Resp: 166938

Ion	Ratio	Lower	Upper
196	100		
198	95.1	76.1	114.1
97	43.1	31.9	47.9
132	24.3	19.4	29.2

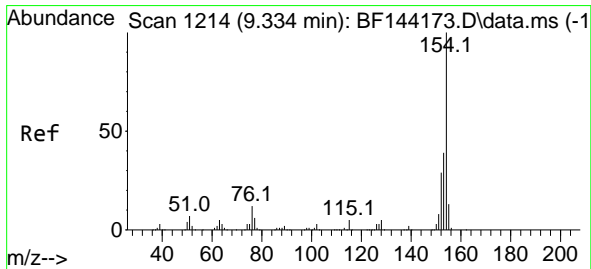
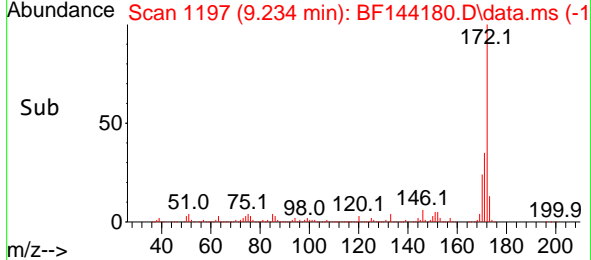
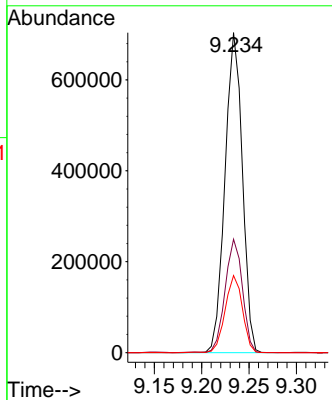
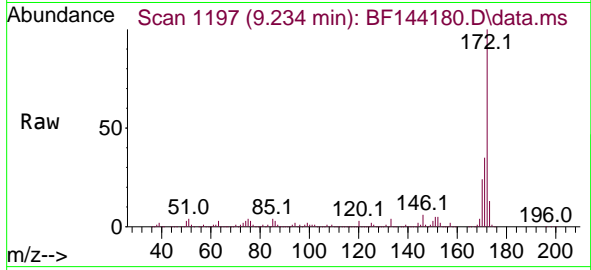




#45
 2-Fluorobiphenyl
 Concen: 75.625 ng
 RT: 9.234 min Scan# 1197
 Delta R.T. 0.006 min
 Lab File: BF144180.D
 Acq: 06 Nov 2025 11:13

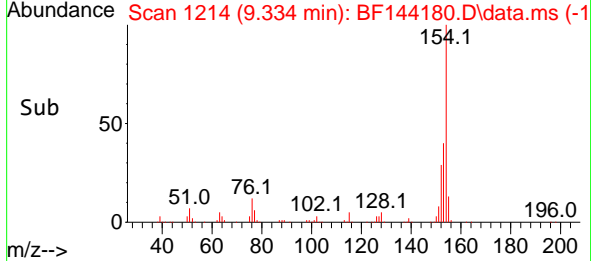
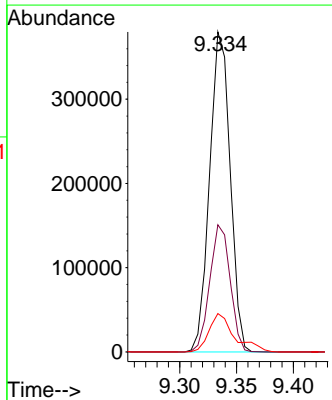
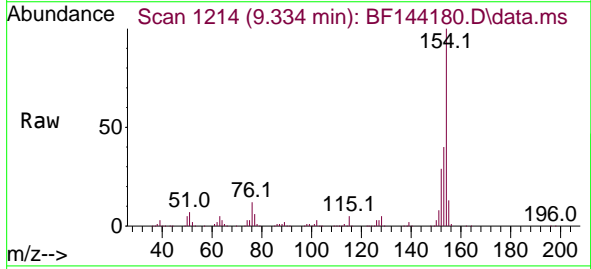
Instrument : BNA_F
 ClientSampleId : SSTDCCC040

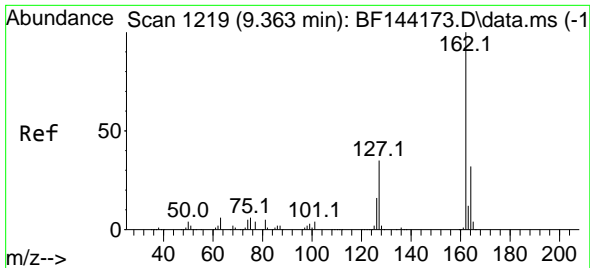
Tgt Ion	Resp	Lower	Upper
172	100		
171	35.4	28.1	42.1
170	24.1	18.6	28.0



#46
 1,1'-Biphenyl
 Concen: 39.082 ng
 RT: 9.334 min Scan# 1214
 Delta R.T. -0.000 min
 Lab File: BF144180.D
 Acq: 06 Nov 2025 11:13

Tgt Ion	Resp	Lower	Upper
154	100		
153	39.7	19.2	59.2
76	12.0	0.0	31.8



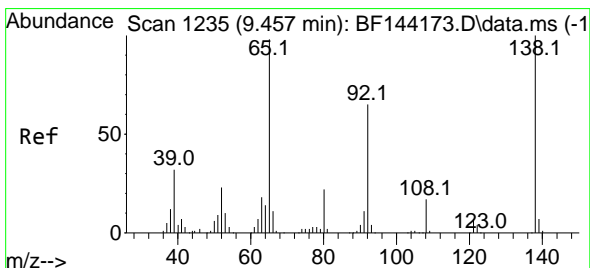
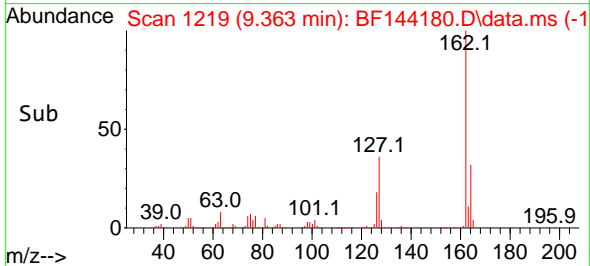
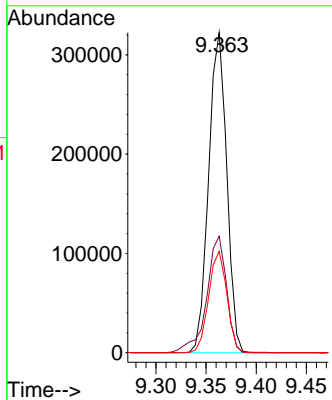
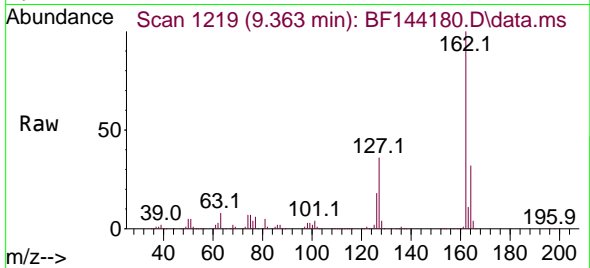


#47
 2-Chloronaphthalene
 Concen: 38.778 ng
 RT: 9.363 min Scan# 11
 Delta R.T. 0.006 min
 Lab File: BF144180.D
 Acq: 06 Nov 2025 11:13

Instrument :
 BNA_F
 ClientSampleId :
 SSTDCCC040

Tgt Ion:162 Resp: 404419

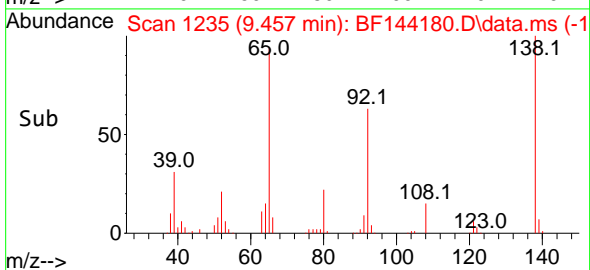
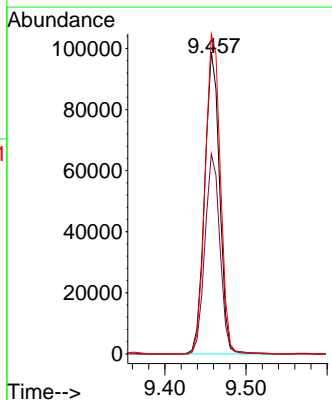
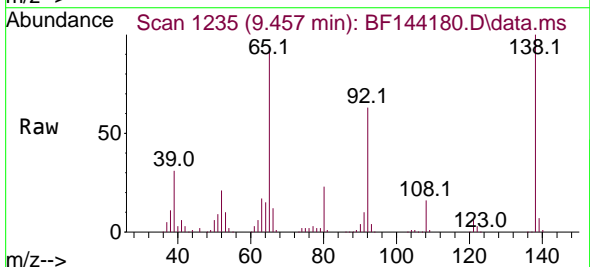
Ion	Ratio	Lower	Upper
162	100		
127	36.4	28.8	43.2
164	31.6	25.8	38.8

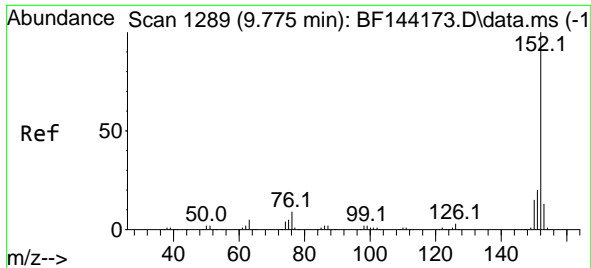


#48
 2-Nitroaniline
 Concen: 42.260 ng
 RT: 9.457 min Scan# 1235
 Delta R.T. -0.000 min
 Lab File: BF144180.D
 Acq: 06 Nov 2025 11:13

Tgt Ion: 65 Resp: 127167

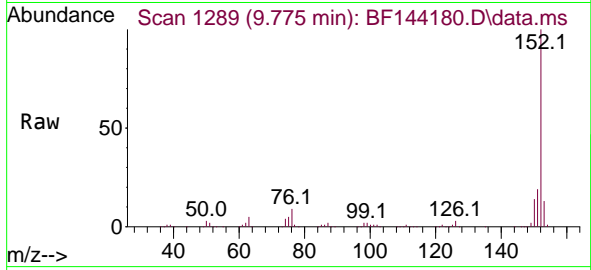
Ion	Ratio	Lower	Upper
65	100		
92	66.3	53.0	79.6
138	106.0	81.6	122.4



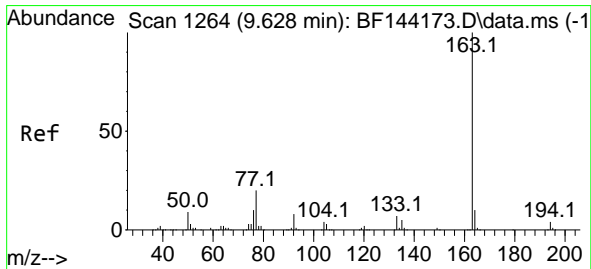
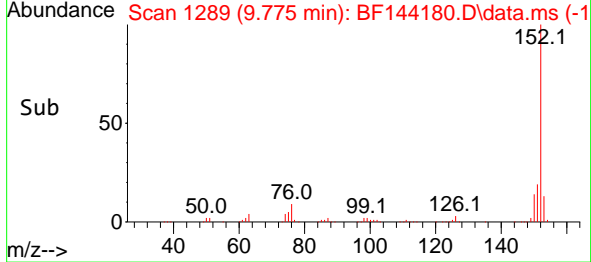
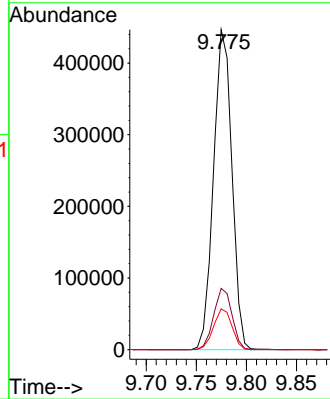


#49
 Acenaphthylene
 Concen: 39.964 ng
 RT: 9.775 min Scan# 11
 Delta R.T. -0.000 min
 Lab File: BF144180.D
 Acq: 06 Nov 2025 11:13

Instrument :
 BNA_F
 ClientSampleId :
 SSTDCCC040

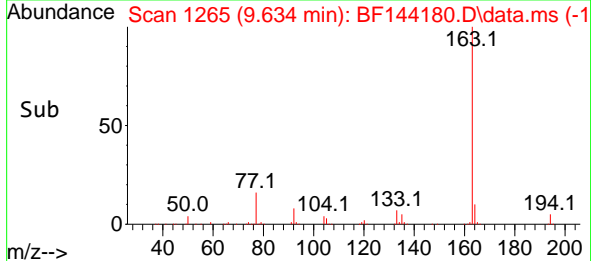
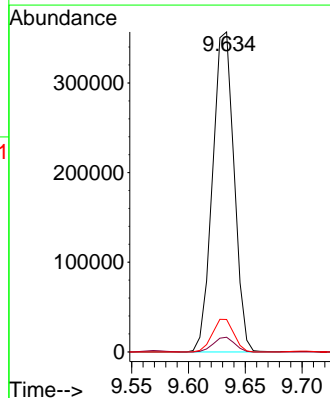
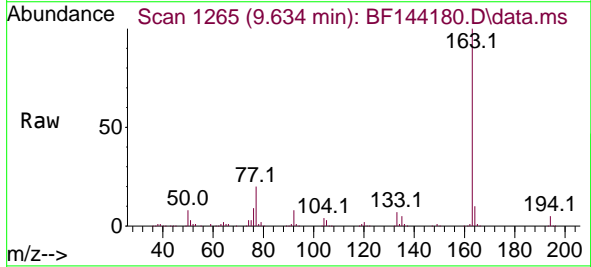


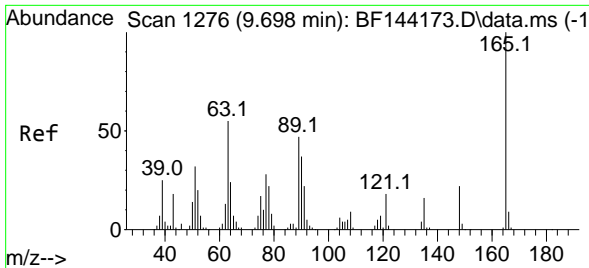
Tgt Ion:152 Resp: 567978
 Ion Ratio Lower Upper
 152 100
 151 19.1 15.9 23.9
 153 12.7 10.5 15.7



#50
 Dimethylphthalate
 Concen: 40.509 ng
 RT: 9.634 min Scan# 1265
 Delta R.T. 0.006 min
 Lab File: BF144180.D
 Acq: 06 Nov 2025 11:13

Tgt Ion:163 Resp: 470054
 Ion Ratio Lower Upper
 163 100
 194 4.6 3.3 4.9
 164 10.1 8.1 12.1

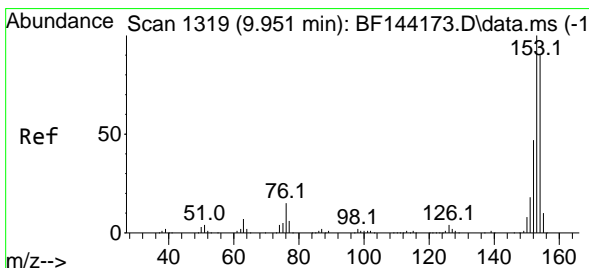
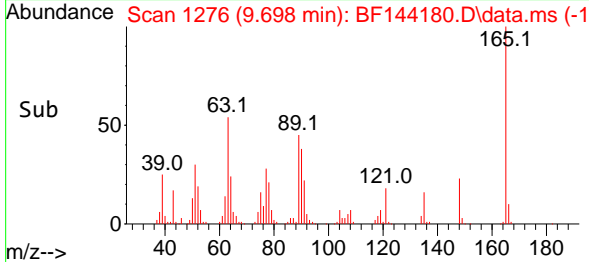
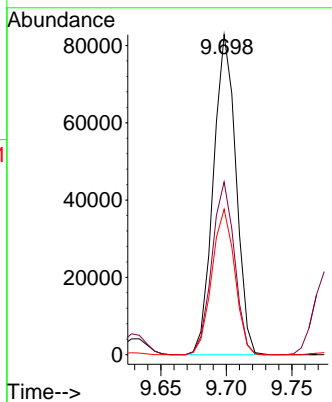
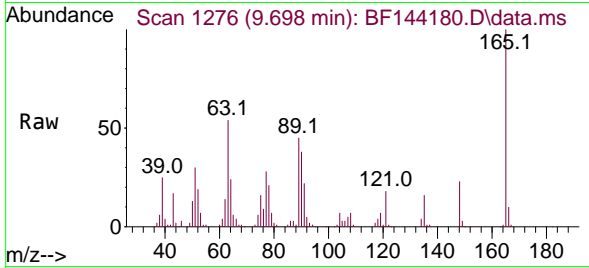




#51
 2,6-Dinitrotoluene
 Concen: 42.332 ng
 RT: 9.698 min Scan# 11
 Delta R.T. 0.006 min
 Lab File: BF144180.D
 Acq: 06 Nov 2025 11:13

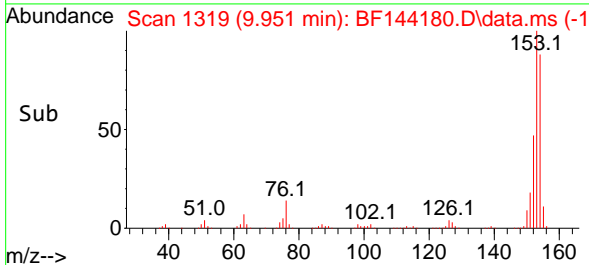
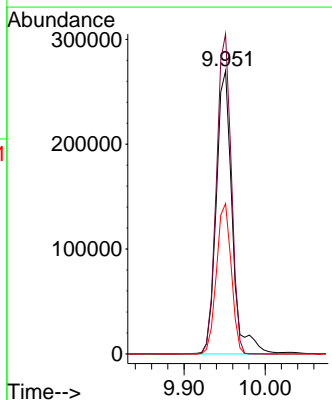
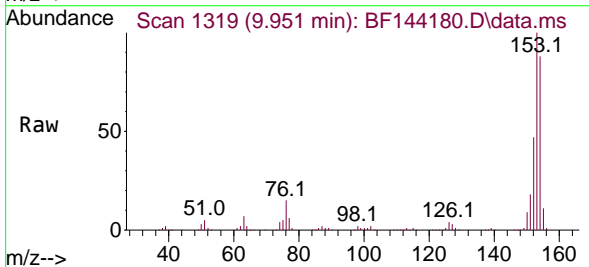
Instrument :
 BNA_F
 ClientSampleId :
 SSTDCCC040

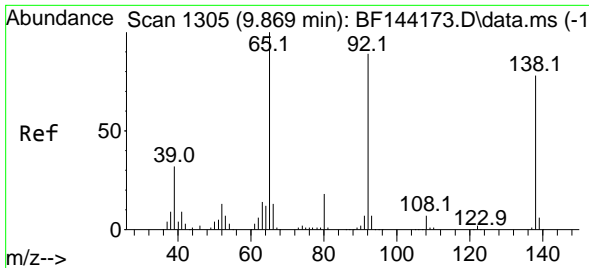
Tgt Ion	Resp	Lower	Upper
165	100		
63	54.0	43.8	65.8
89	45.4	37.5	56.3



#52
 Acenaphthene
 Concen: 38.842 ng
 RT: 9.951 min Scan# 1319
 Delta R.T. 0.006 min
 Lab File: BF144180.D
 Acq: 06 Nov 2025 11:13

Tgt Ion	Resp	Lower	Upper
154	100		
153	113.1	89.0	133.4
152	53.1	42.2	63.4



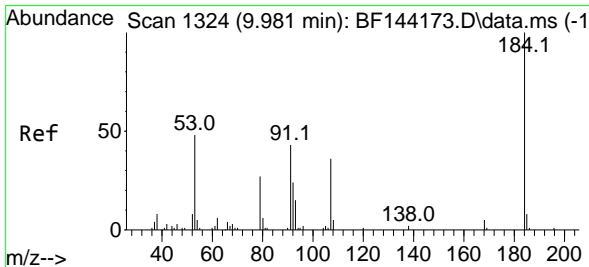
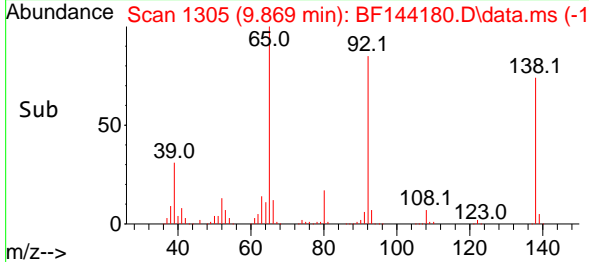
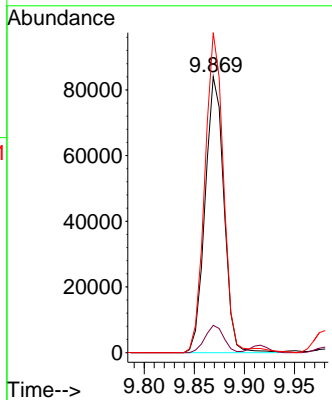
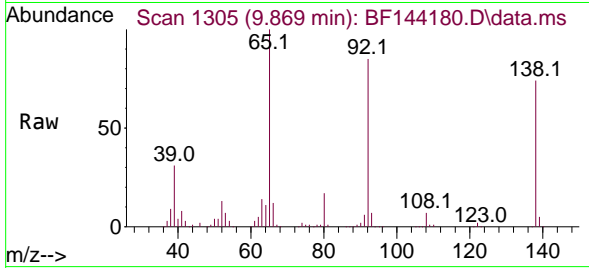


#53
 3-Nitroaniline
 Concen: 42.522 ng
 RT: 9.869 min Scan# 1305
 Delta R.T. -0.000 min
 Lab File: BF144180.D
 Acq: 06 Nov 2025 11:13

Instrument : BNA_F
 ClientSampleId : SSTDCCC040

Tgt Ion:138 Resp: 109186

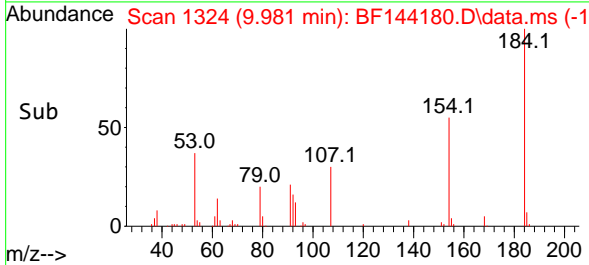
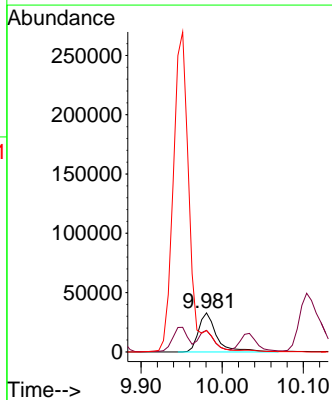
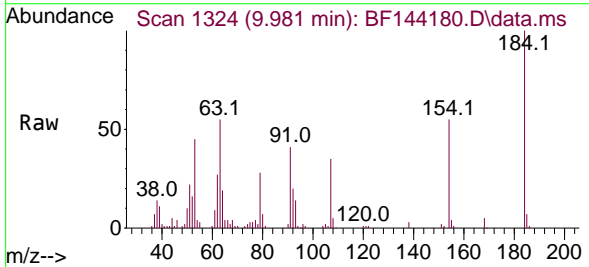
Ion	Ratio	Lower	Upper
138	100		
108	9.9	7.5	11.3
92	116.0	91.8	137.6

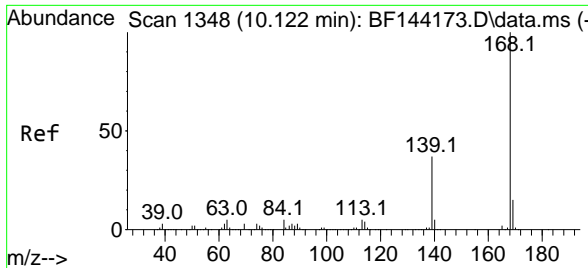


#54
 2,4-Dinitrophenol
 Concen: 35.987 ng
 RT: 9.981 min Scan# 1324
 Delta R.T. -0.006 min
 Lab File: BF144180.D
 Acq: 06 Nov 2025 11:13

Tgt Ion:184 Resp: 51045

Ion	Ratio	Lower	Upper
184	100		
63	55.3	44.0	66.0
154	54.7	42.4	63.6

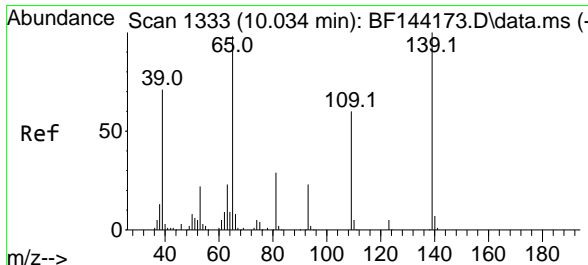
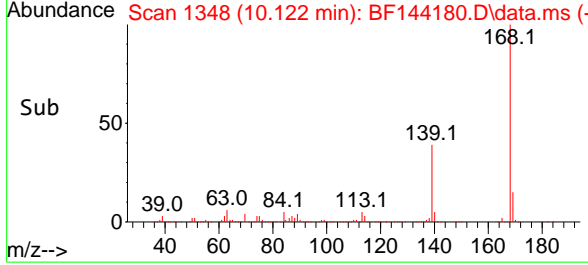
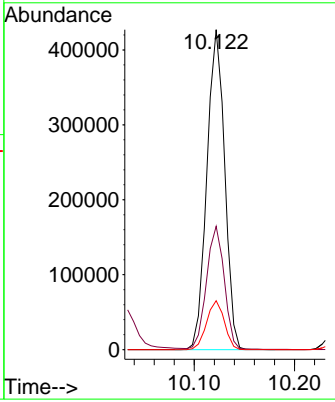
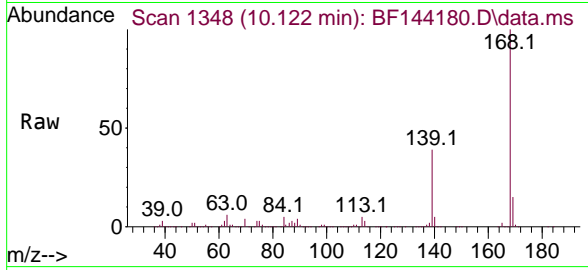




#55
 Dibenzofuran
 Concen: 39.602 ng
 RT: 10.122 min Scan# 1348
 Delta R.T. 0.006 min
 Lab File: BF144180.D
 Acq: 06 Nov 2025 11:13

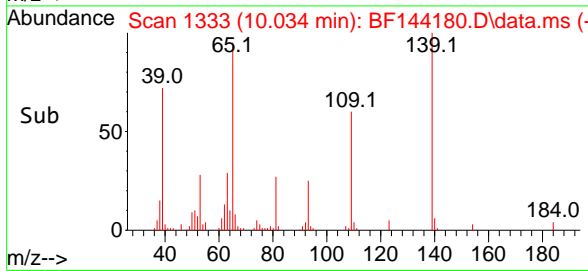
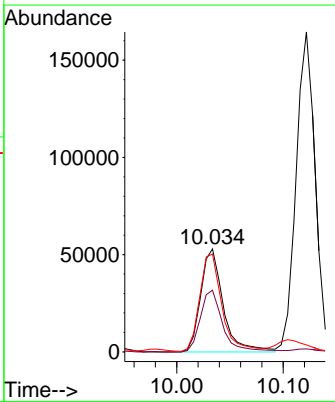
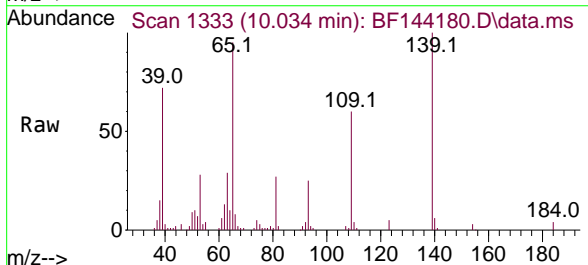
Instrument : BNA_F
 ClientSampleId : SSTDCCC040

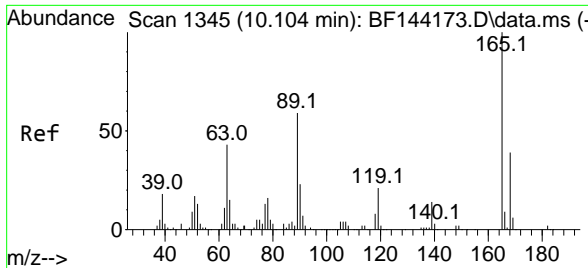
Tgt Ion	Resp	Lower	Upper
168	527126		
168	100		
139	38.5	30.2	45.2
169	15.3	12.2	18.4



#56
 4-Nitrophenol
 Concen: 41.731 ng
 RT: 10.034 min Scan# 1333
 Delta R.T. -0.006 min
 Lab File: BF144180.D
 Acq: 06 Nov 2025 11:13

Tgt Ion	Resp	Lower	Upper
139	77512		
139	100		
109	59.8	39.9	79.9
65	95.0	79.5	119.5



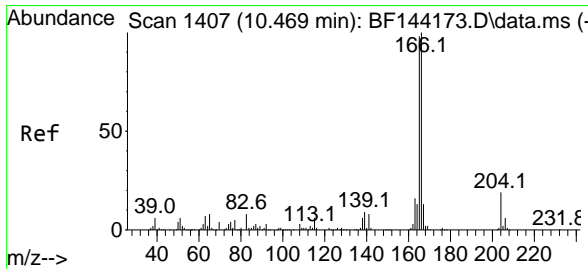
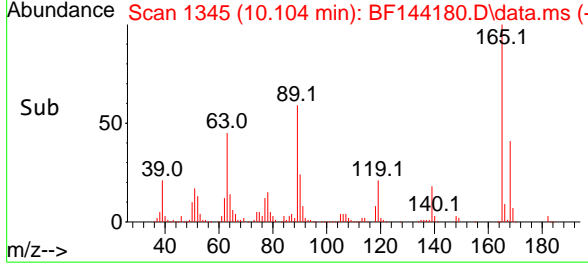
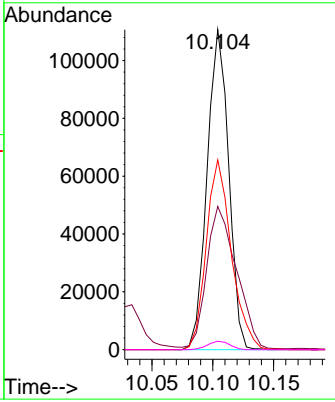
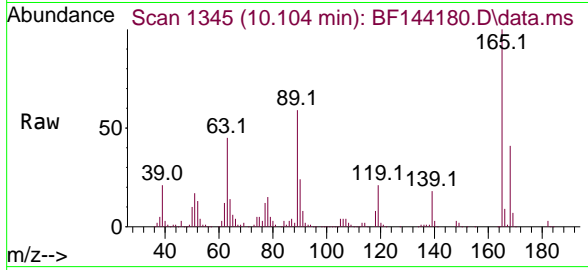


#57
 2,4-Dinitrotoluene
 Concen: 43.353 ng
 RT: 10.104 min Scan# 11
 Delta R.T. 0.006 min
 Lab File: BF144180.D
 Acq: 06 Nov 2025 11:13

Instrument : BNA_F
 ClientSampleId : SSTDCCC040

Tgt Ion:165 Resp: 136325

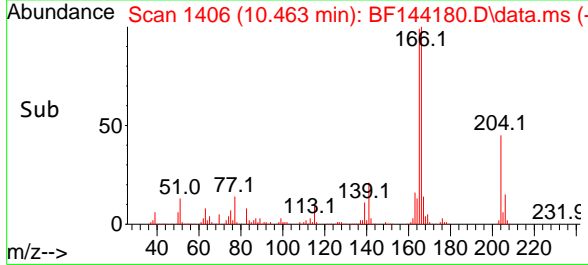
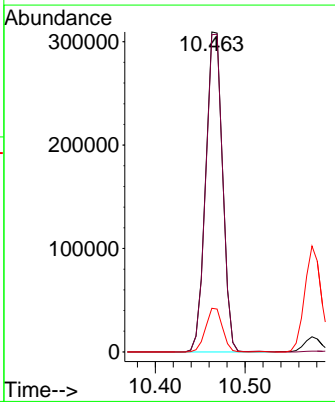
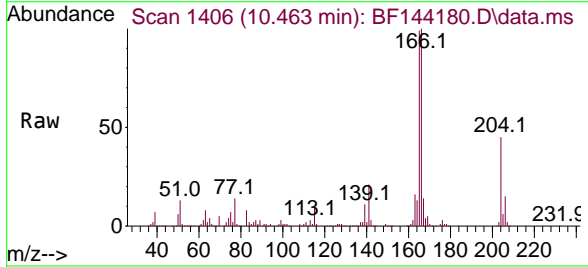
Ion	Ratio	Lower	Upper
165	100		
63	44.7	35.5	53.3
89	59.3	47.4	71.2
182	2.6	1.9	2.9

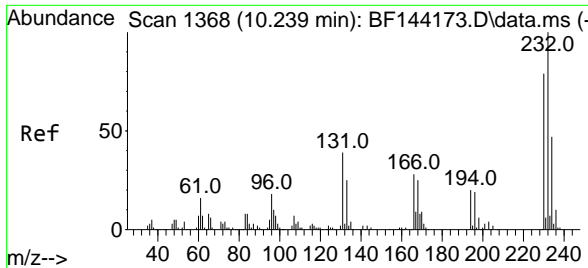


#58
 Fluorene
 Concen: 40.169 ng
 RT: 10.463 min Scan# 1406
 Delta R.T. -0.000 min
 Lab File: BF144180.D
 Acq: 06 Nov 2025 11:13

Tgt Ion:166 Resp: 406516

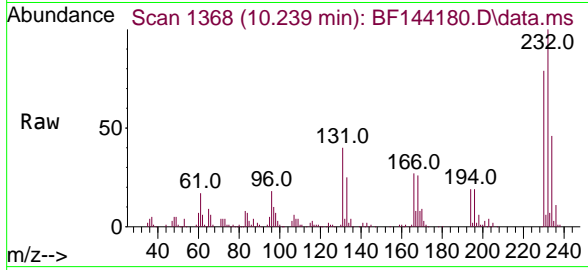
Ion	Ratio	Lower	Upper
166	100		
165	99.1	78.6	118.0
167	13.6	10.4	15.6





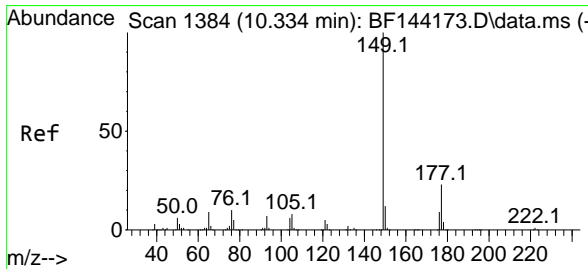
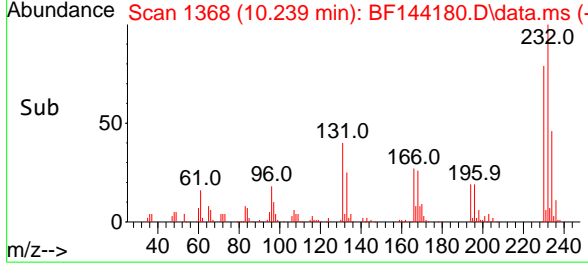
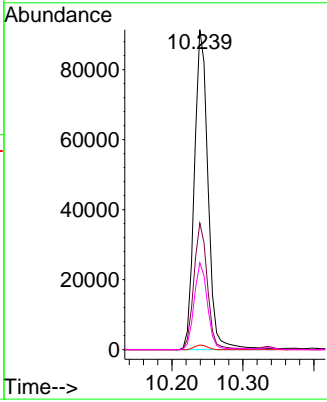
#59
 2,3,4,6-Tetrachlorophenol
 Concen: 40.854 ng
 RT: 10.239 min Scan# 1368
 Delta R.T. -0.000 min
 Lab File: BF144180.D
 Acq: 06 Nov 2025 11:13

Instrument : BNA_F
 ClientSampleId : SSTDCCC040

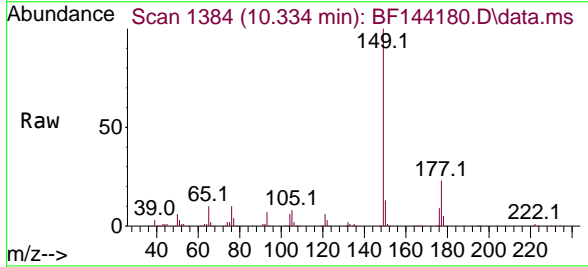


Tgt Ion: 232 Resp: 121713

Ion	Ratio	Lower	Upper
232	100		
131	39.1	30.3	45.5
130	1.3	1.2	1.8
166	26.3	21.5	32.3

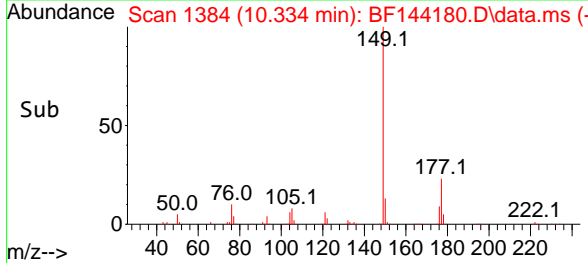
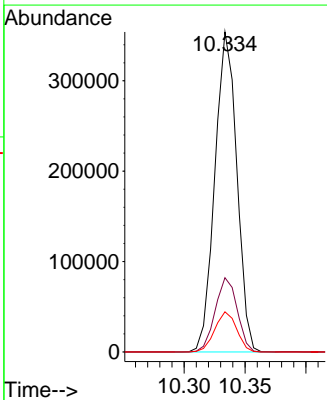


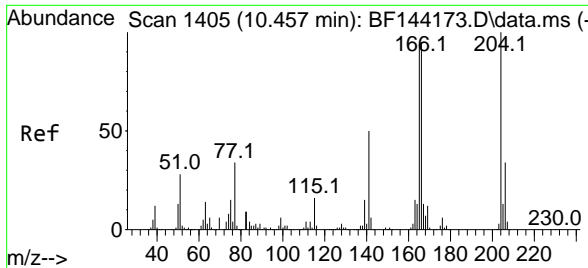
#60
 Diethylphthalate
 Concen: 41.414 ng
 RT: 10.334 min Scan# 1384
 Delta R.T. 0.006 min
 Lab File: BF144180.D
 Acq: 06 Nov 2025 11:13



Tgt Ion: 149 Resp: 443003

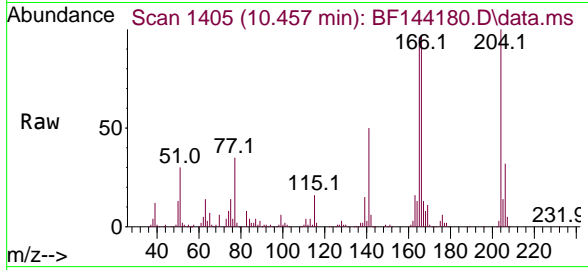
Ion	Ratio	Lower	Upper
149	100		
177	23.2	18.3	27.5
150	12.5	9.8	14.6



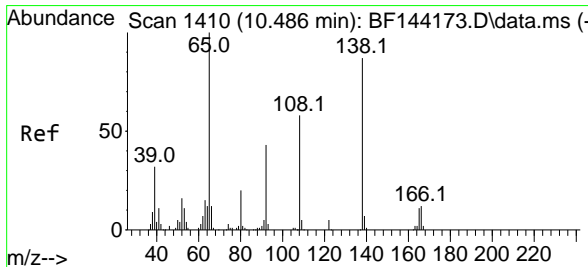
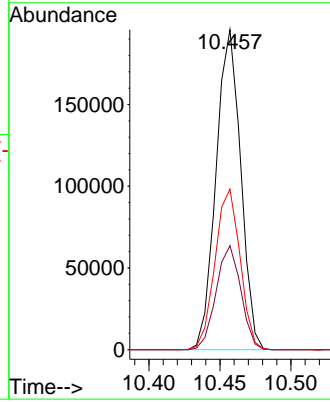
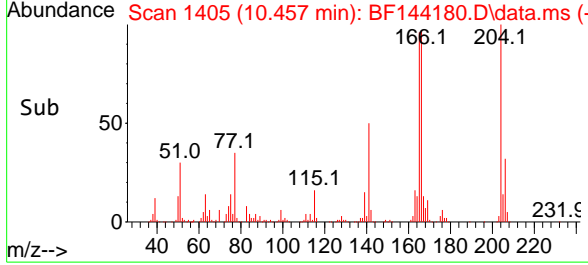


#61
 4-Chlorophenyl-phenylether
 Concen: 41.066 ng
 RT: 10.457 min Scan# 1405
 Delta R.T. -0.000 min
 Lab File: BF144180.D
 Acq: 06 Nov 2025 11:13

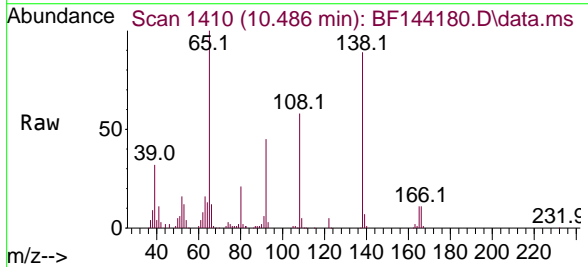
Instrument : BNA_F
 ClientSampleId : SSTDCCC040



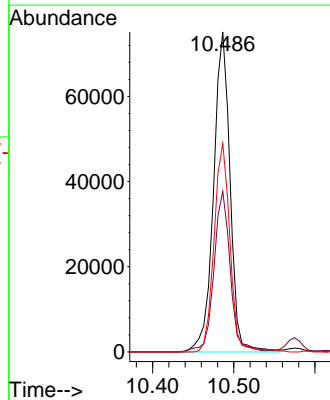
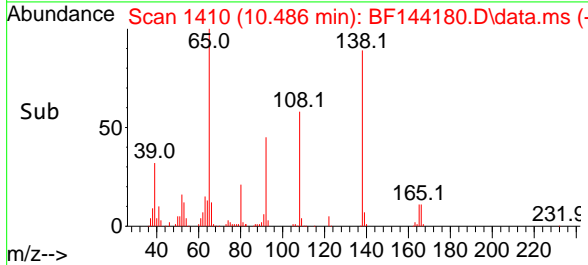
Tgt Ion:204 Resp: 236731
 Ion Ratio Lower Upper
 204 100
 206 32.5 27.4 41.2
 141 50.2 40.0 60.0

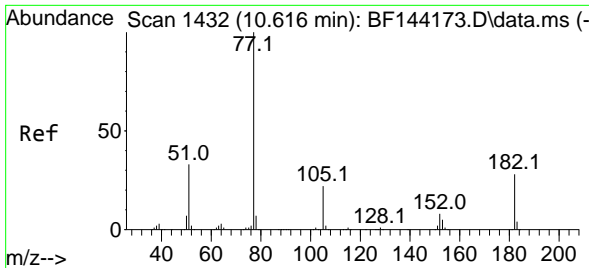


#62
 4-Nitroaniline
 Concen: 43.469 ng
 RT: 10.486 min Scan# 1410
 Delta R.T. 0.012 min
 Lab File: BF144180.D
 Acq: 06 Nov 2025 11:13



Tgt Ion:138 Resp: 106296
 Ion Ratio Lower Upper
 138 100
 92 50.1 29.4 69.4
 108 65.1 46.4 86.4

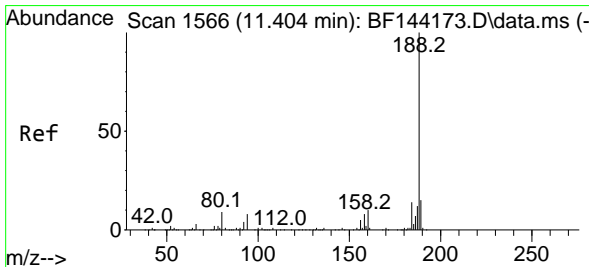
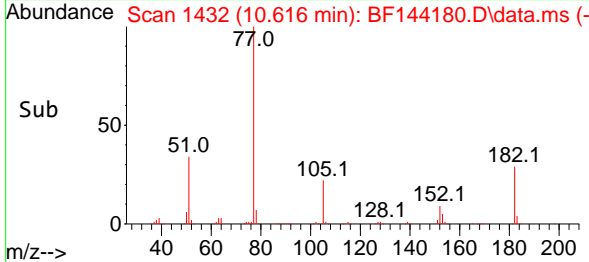
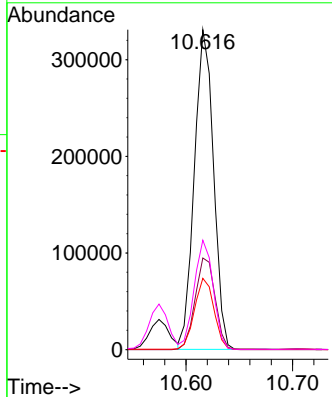
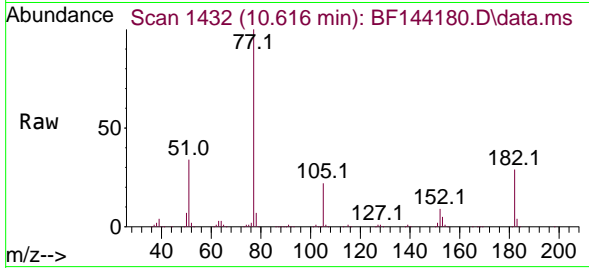




#63
 Azobenzene
 Concen: 41.431 ng
 RT: 10.616 min Scan# 14
 Delta R.T. -0.000 min
 Lab File: BF144180.D
 Acq: 06 Nov 2025 11:13

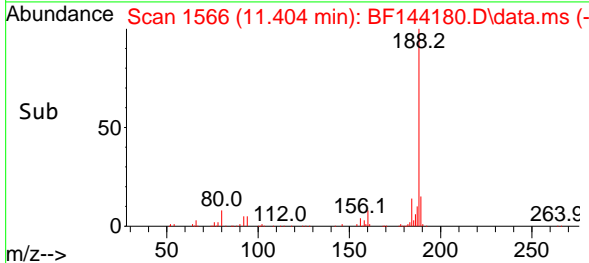
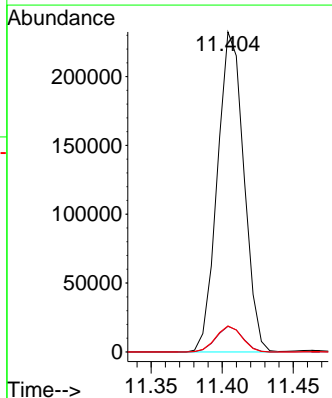
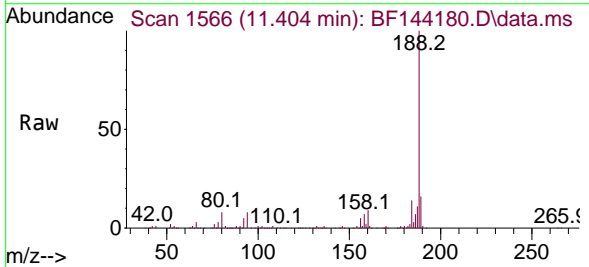
Instrument : BNA_F
 ClientSampleId : SSTDCCC040

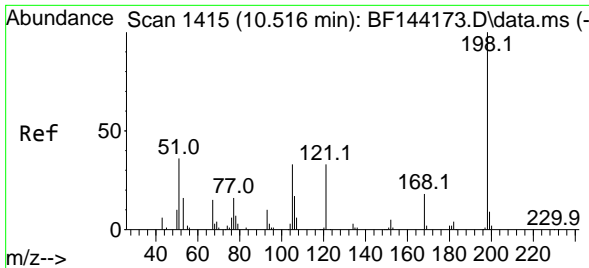
Tgt Ion	Resp	Lower	Upper
77	100		
182	28.7	8.1	48.1
105	22.3	2.0	42.0
51	34.2	13.9	53.9



#64
 Phenanthrene-d10
 Concen: 20.000 ng
 RT: 11.404 min Scan# 1566
 Delta R.T. -0.000 min
 Lab File: BF144180.D
 Acq: 06 Nov 2025 11:13

Tgt Ion	Resp	Lower	Upper
188	100		
94	8.0	6.2	9.2
80	8.1	6.9	10.3

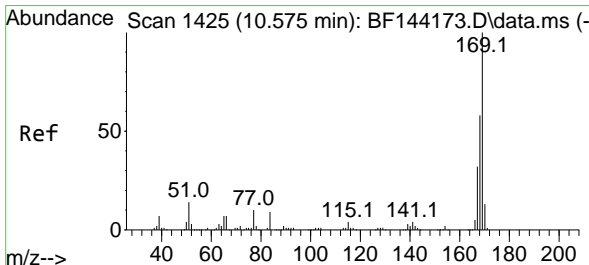
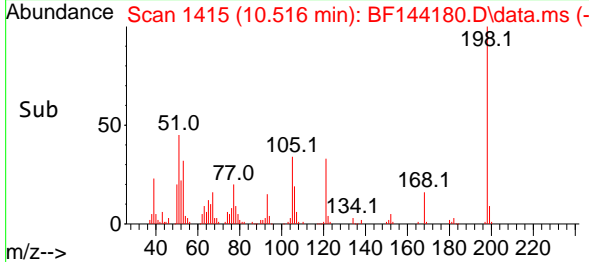
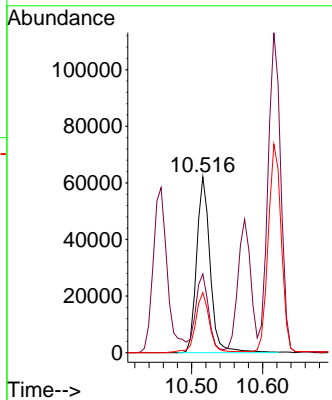
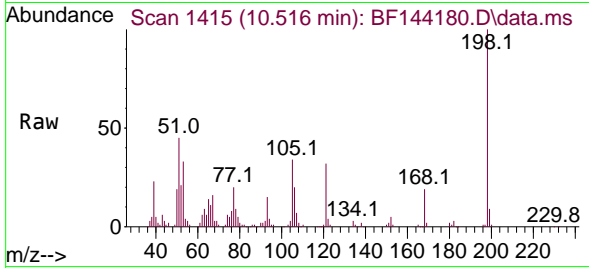




#65
 4,6-Dinitro-2-methylphenol
 Concen: 39.889 ng
 RT: 10.516 min Scan# 1415
 Delta R.T. -0.006 min
 Lab File: BF144180.D
 Acq: 06 Nov 2025 11:13

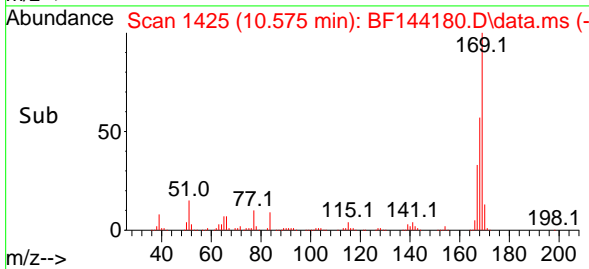
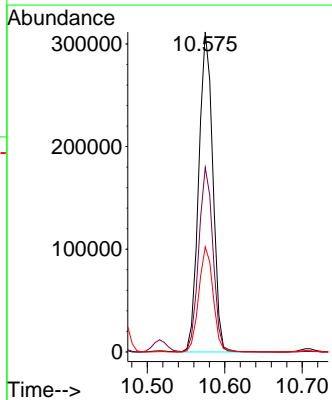
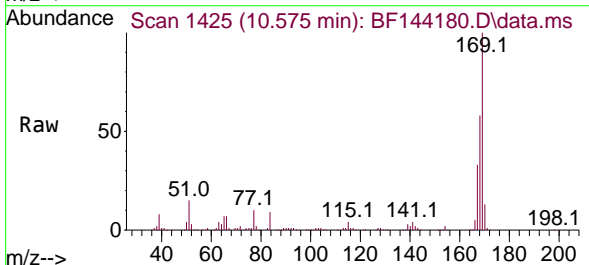
Instrument :
 BNA_F
 ClientSampleId :
 SSTDCCC040

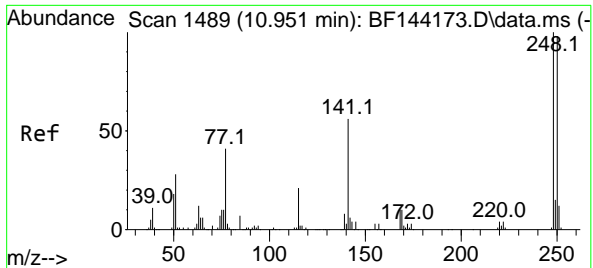
Tgt Ion:198 Resp: 81746
 Ion Ratio Lower Upper
 198 100
 51 44.8 25.6 65.6
 105 34.1 14.6 54.6



#66
 n-Nitrosodiphenylamine
 Concen: 40.356 ng
 RT: 10.575 min Scan# 1425
 Delta R.T. 0.006 min
 Lab File: BF144180.D
 Acq: 06 Nov 2025 11:13

Tgt Ion:169 Resp: 391555
 Ion Ratio Lower Upper
 169 100
 168 57.6 46.2 69.2
 167 32.8 25.7 38.5

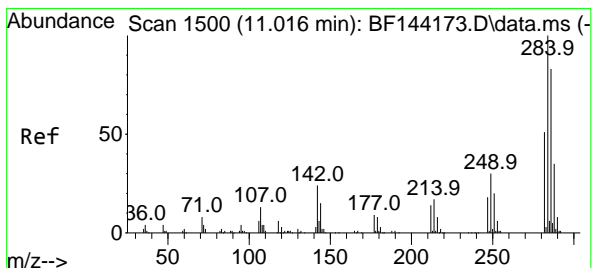
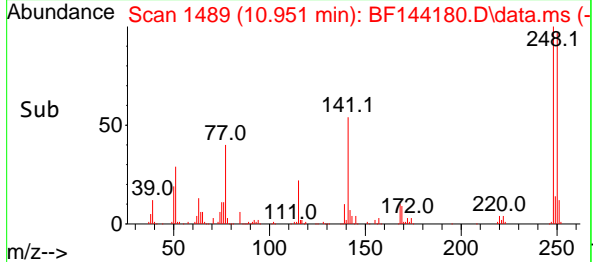
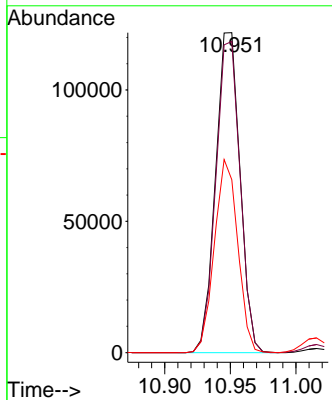
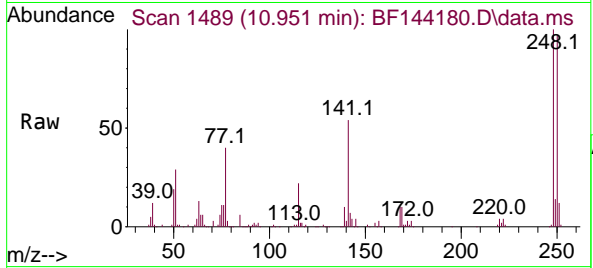




#67
 4-Bromophenyl-phenylether
 Concen: 41.135 ng
 RT: 10.951 min Scan# 1489
 Delta R.T. 0.006 min
 Lab File: BF144180.D
 Acq: 06 Nov 2025 11:13

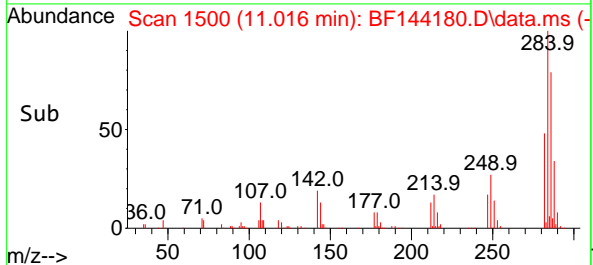
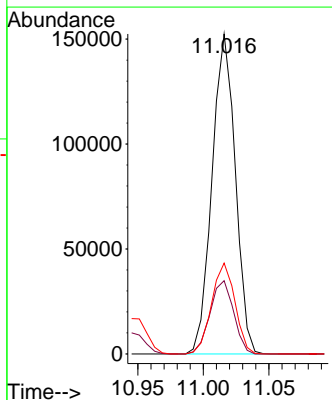
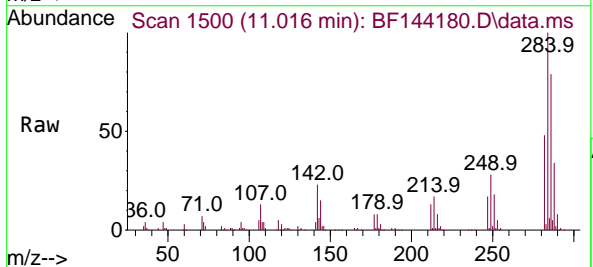
Instrument : BNA_F
 ClientSampleId : SSTDCCC040

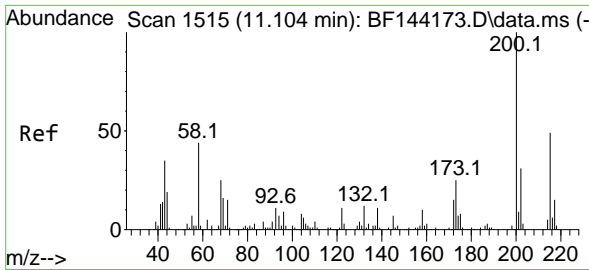
Tgt Ion	Resp	Lower	Upper
248	158394		
248	100		
250	97.2	78.4	117.6
141	54.0	45.1	67.7



#68
 Hexachlorobenzene
 Concen: 41.588 ng
 RT: 11.016 min Scan# 1500
 Delta R.T. 0.006 min
 Lab File: BF144180.D
 Acq: 06 Nov 2025 11:13

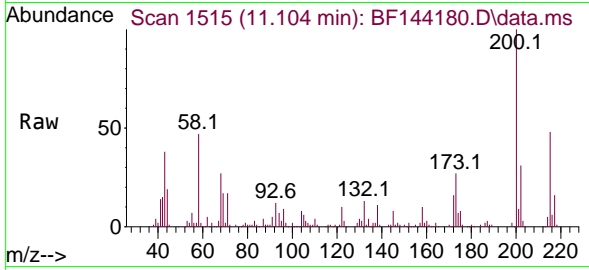
Tgt Ion	Resp	Lower	Upper
284	188618		
284	100		
142	22.9	19.2	28.8
249	28.4	23.8	35.8



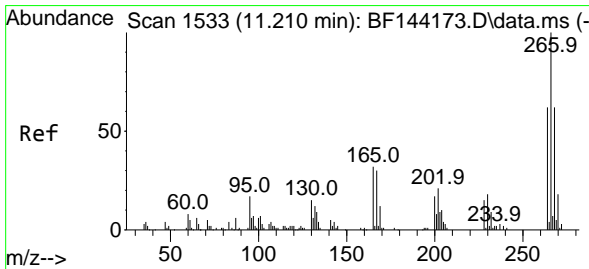
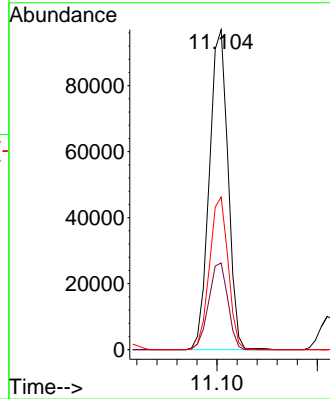
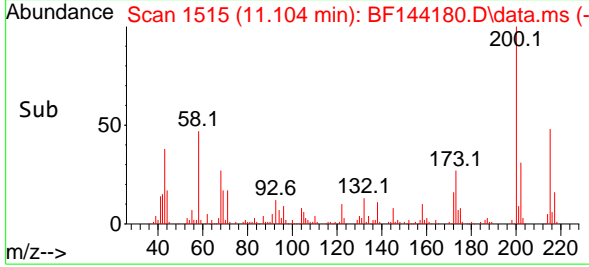


#69
 Atrazine
 Concen: 40.569 ng
 RT: 11.104 min Scan# 11
 Delta R.T. 0.006 min
 Lab File: BF144180.D
 Acq: 06 Nov 2025 11:13

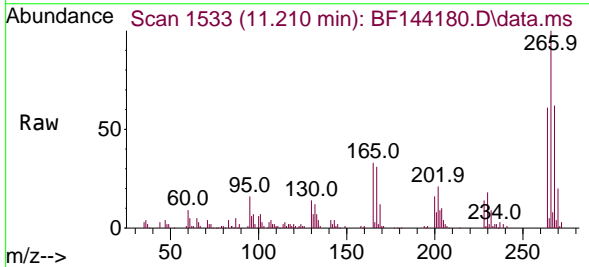
Instrument :
 BNA_F
 ClientSampleId :
 SSTDCCC040



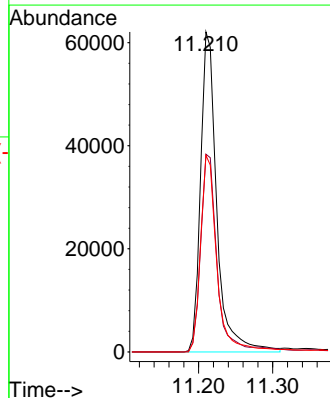
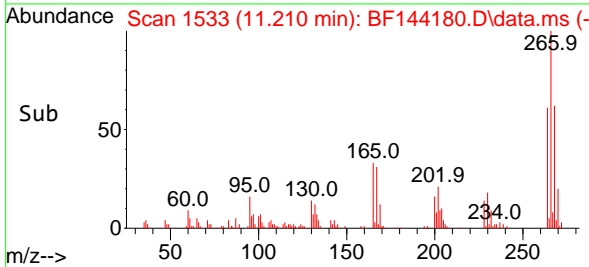
Tgt Ion:200 Resp: 125179
 Ion Ratio Lower Upper
 200 100
 173 27.1 5.0 45.0
 215 47.7 28.7 68.7

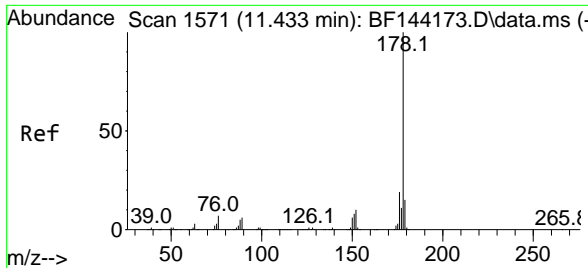


#70
 Pentachlorophenol
 Concen: 41.865 ng
 RT: 11.210 min Scan# 1533
 Delta R.T. -0.006 min
 Lab File: BF144180.D
 Acq: 06 Nov 2025 11:13



Tgt Ion:266 Resp: 94551
 Ion Ratio Lower Upper
 266 100
 268 61.8 49.5 74.3
 264 61.4 49.4 74.2



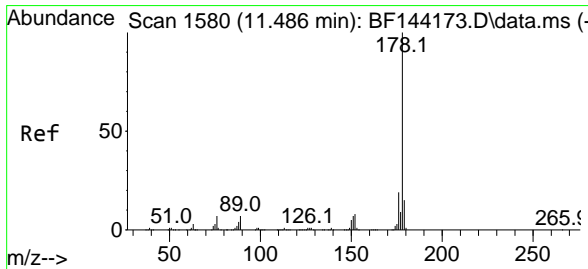
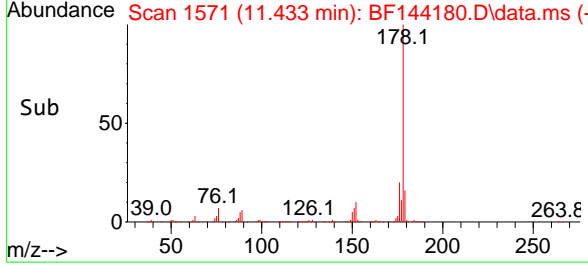
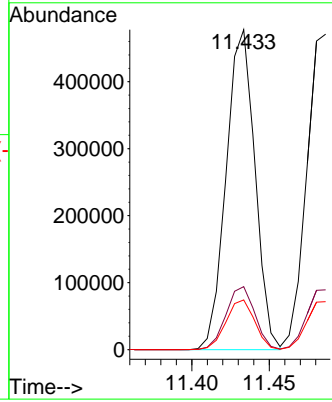
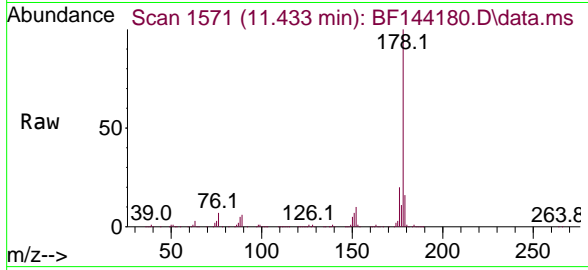


#71
 Phenanthrene
 Concen: 41.075 ng
 RT: 11.433 min Scan# 1571
 Delta R.T. 0.006 min
 Lab File: BF144180.D
 Acq: 06 Nov 2025 11:13

Instrument : BNA_F
 ClientSampleId : SSTDCCC040

Tgt Ion:178 Resp: 616940

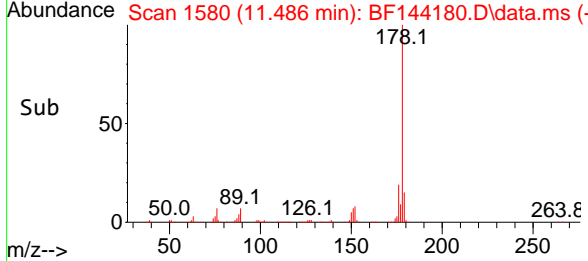
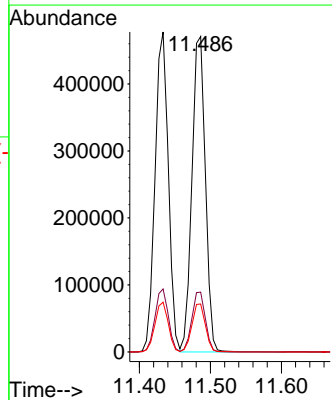
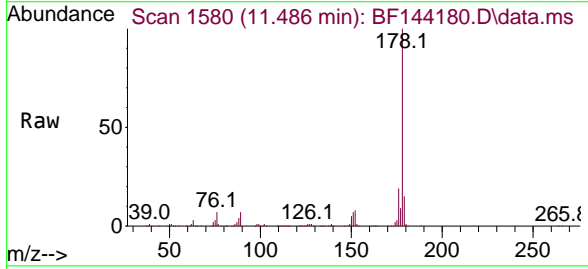
Ion	Ratio	Lower	Upper
178	100		
176	19.7	15.5	23.3
179	15.5	12.2	18.4

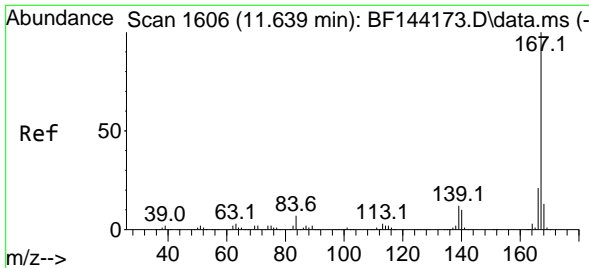


#72
 Anthracene
 Concen: 40.525 ng
 RT: 11.486 min Scan# 1580
 Delta R.T. 0.006 min
 Lab File: BF144180.D
 Acq: 06 Nov 2025 11:13

Tgt Ion:178 Resp: 618922

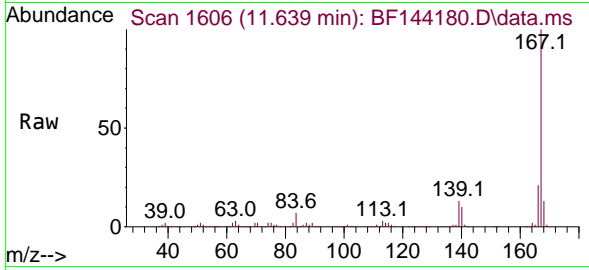
Ion	Ratio	Lower	Upper
178	100		
176	18.9	15.3	22.9
179	15.2	12.0	18.0





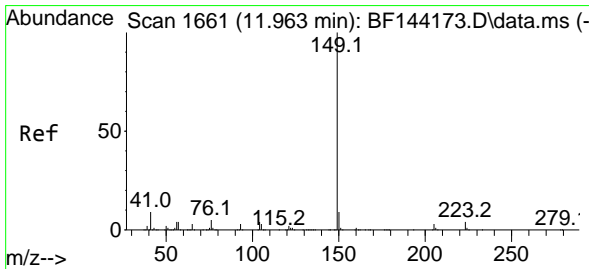
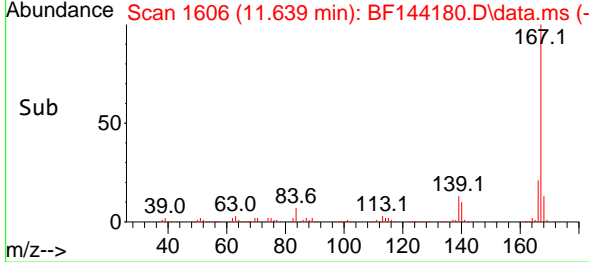
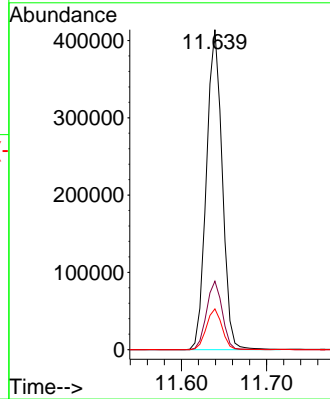
#73
 Carbazole
 Concen: 40.961 ng
 RT: 11.639 min Scan# 1606
 Delta R.T. -0.000 min
 Lab File: BF144180.D
 Acq: 06 Nov 2025 11:13

Instrument : BNA_F
 ClientSampleId : SSTDCCC040



Tgt Ion:167 Resp: 531956

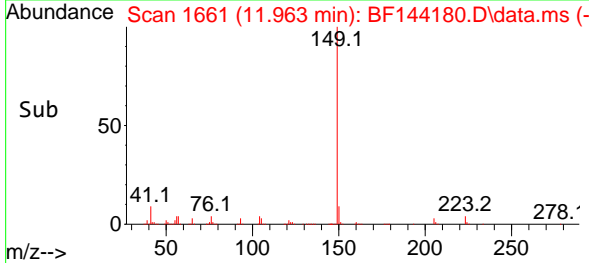
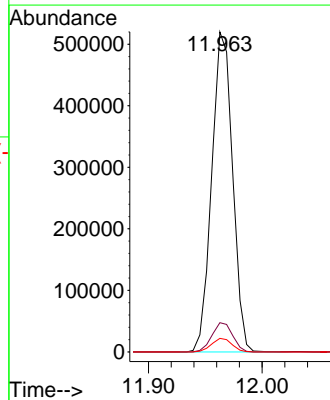
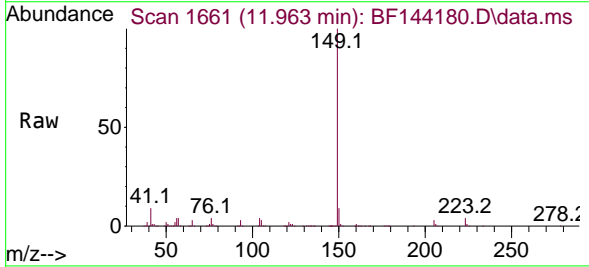
Ion	Ratio	Lower	Upper
167	100		
166	21.4	17.2	25.8
139	12.7	9.9	14.9

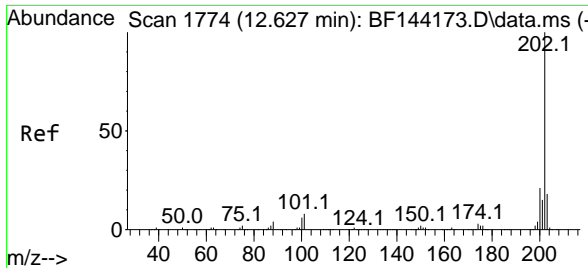


#74
 Di-n-butylphthalate
 Concen: 42.273 ng
 RT: 11.963 min Scan# 1661
 Delta R.T. -0.000 min
 Lab File: BF144180.D
 Acq: 06 Nov 2025 11:13

Tgt Ion:149 Resp: 663671

Ion	Ratio	Lower	Upper
149	100		
150	9.1	7.4	11.0
104	4.2	3.4	5.2

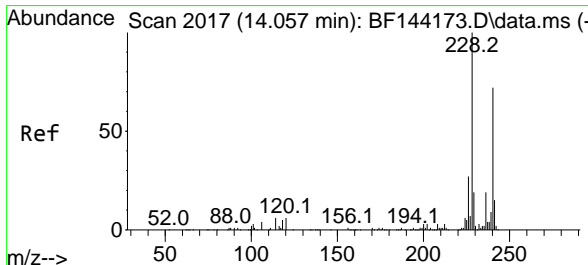
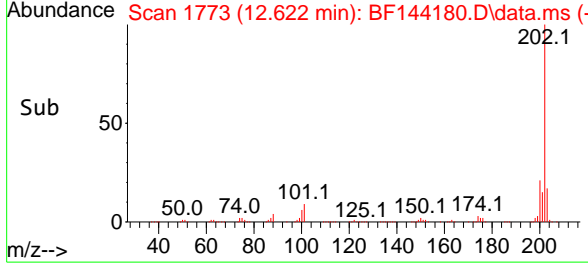
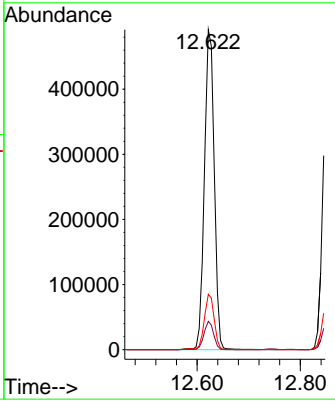
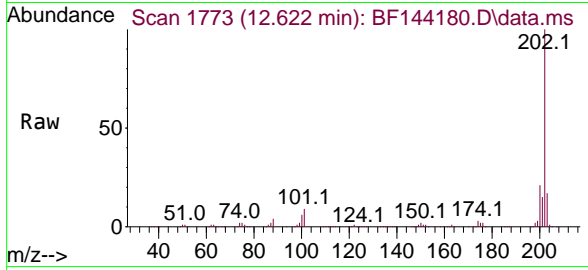




#75
 Fluoranthene
 Concen: 41.842 ng
 RT: 12.622 min Scan# 1773
 Delta R.T. -0.000 min
 Lab File: BF144180.D
 Acq: 06 Nov 2025 11:13

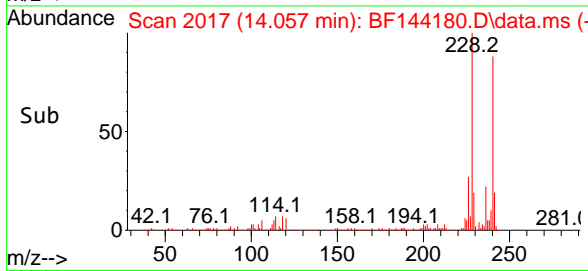
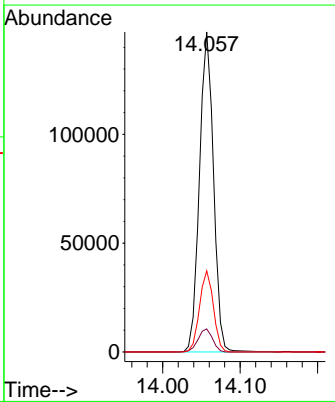
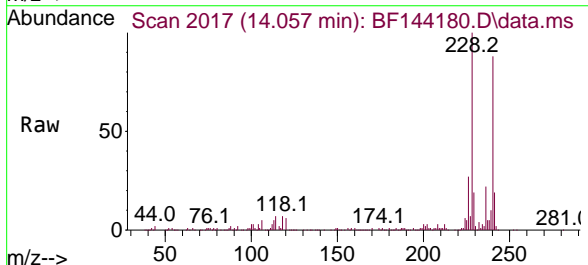
Instrument : BNA_F
 Client Sample Id : SSTDCCC040

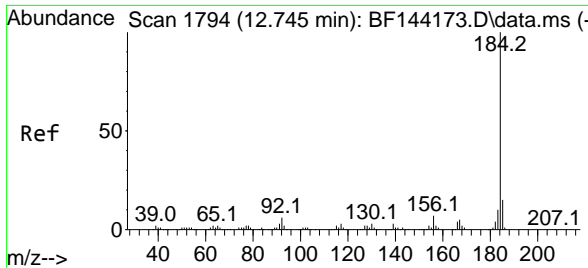
Tgt Ion	Resp	Lower	Upper
202	100		
101	8.8	0.0	27.9
203	17.3	0.0	37.5



#76
 Chrysene-d12
 Concen: 20.000 ng
 RT: 14.057 min Scan# 2017
 Delta R.T. 0.006 min
 Lab File: BF144180.D
 Acq: 06 Nov 2025 11:13

Tgt Ion	Resp	Lower	Upper
240	100		
120	7.2	6.6	10.0
236	25.3	21.4	32.2



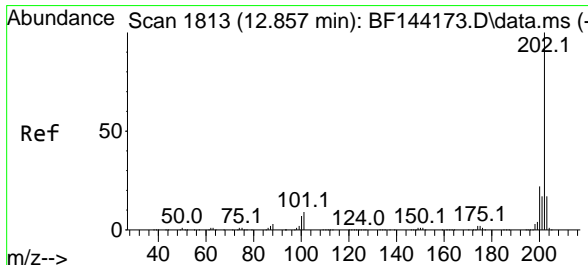
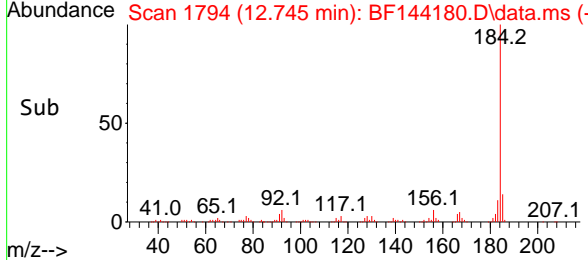
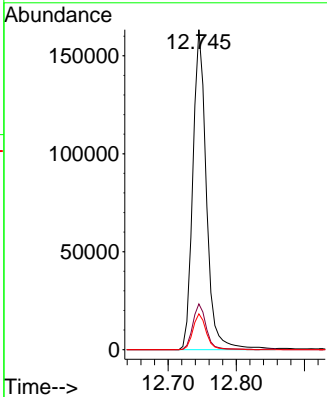
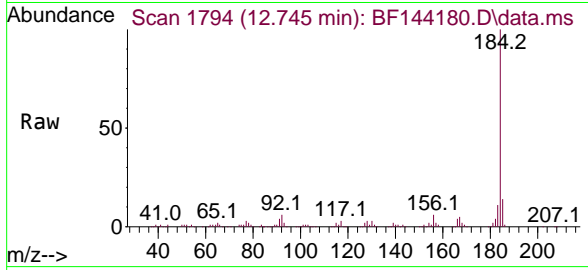


#77
 Benzidine
 Concen: 41.487 ng
 RT: 12.745 min Scan# 11
 Delta R.T. -0.006 min
 Lab File: BF144180.D
 Acq: 06 Nov 2025 11:13

Instrument : BNA_F
 ClientSampleId : SSTDCCC040

Tgt Ion:184 Resp: 226599

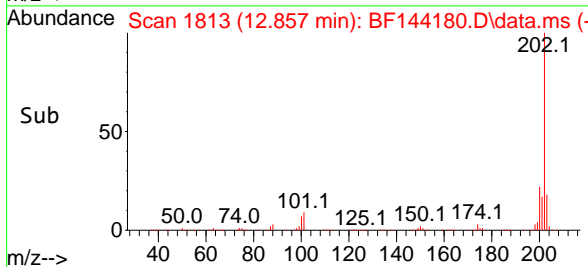
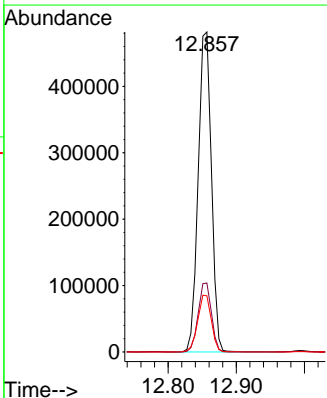
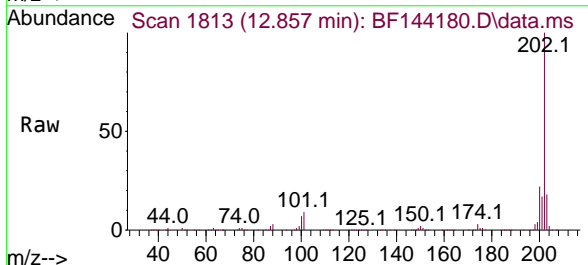
Ion	Ratio	Lower	Upper
184	100		
185	14.3	11.7	17.5
183	11.2	8.3	12.5

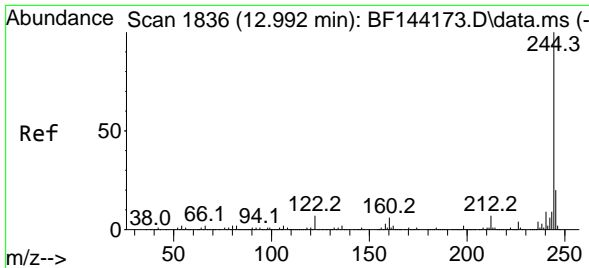


#78
 Pyrene
 Concen: 43.743 ng
 RT: 12.857 min Scan# 1813
 Delta R.T. 0.006 min
 Lab File: BF144180.D
 Acq: 06 Nov 2025 11:13

Tgt Ion:202 Resp: 651255

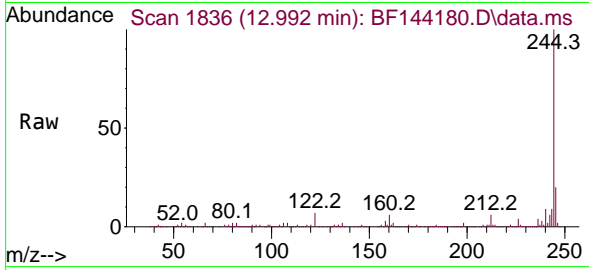
Ion	Ratio	Lower	Upper
202	100		
200	21.5	17.2	25.8
203	17.5	13.7	20.5



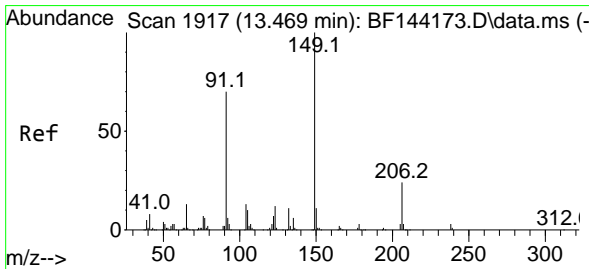
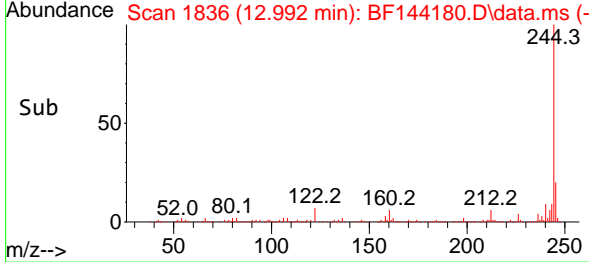
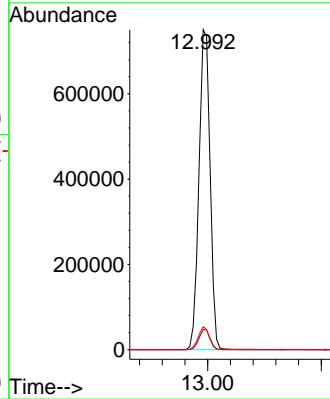


#79
 Terphenyl-d14
 Concen: 87.235 ng
 RT: 12.992 min Scan# 1836
 Delta R.T. -0.000 min
 Lab File: BF144180.D
 Acq: 06 Nov 2025 11:13

Instrument : BNA_F
 ClientSampleId : SSTDCCC040

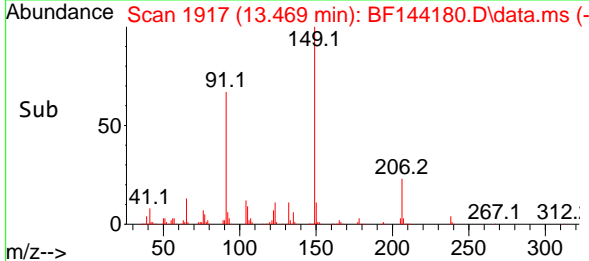
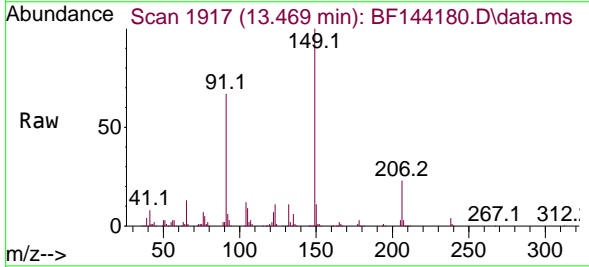
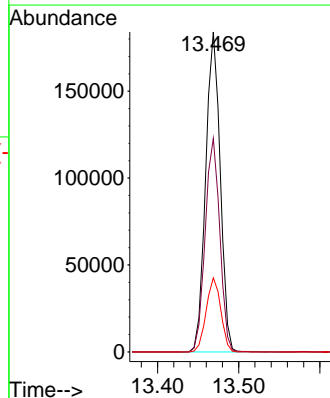


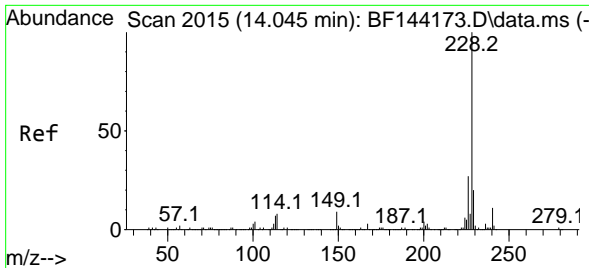
Tgt Ion:244 Resp: 1014109
 Ion Ratio Lower Upper
 244 100
 212 6.3 5.3 7.9
 122 7.1 5.6 8.4



#80
 Butylbenzylphthalate
 Concen: 44.482 ng
 RT: 13.469 min Scan# 1917
 Delta R.T. -0.000 min
 Lab File: BF144180.D
 Acq: 06 Nov 2025 11:13

Tgt Ion:149 Resp: 229535
 Ion Ratio Lower Upper
 149 100
 91 66.7 56.1 84.1
 206 23.1 18.8 28.2



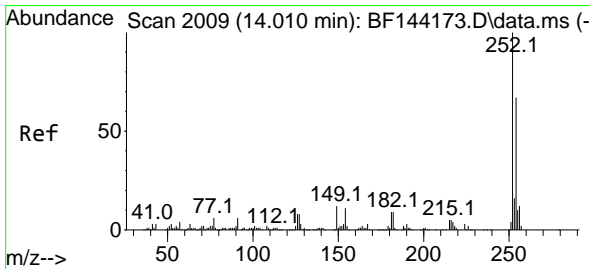
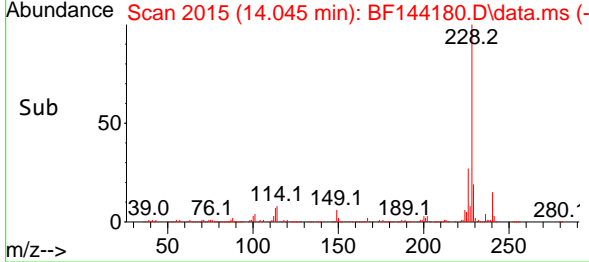
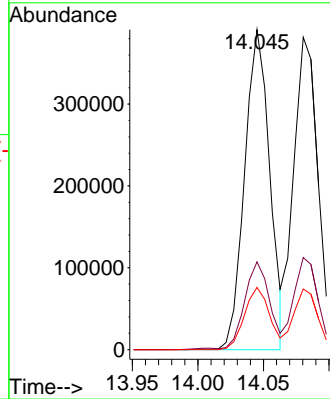
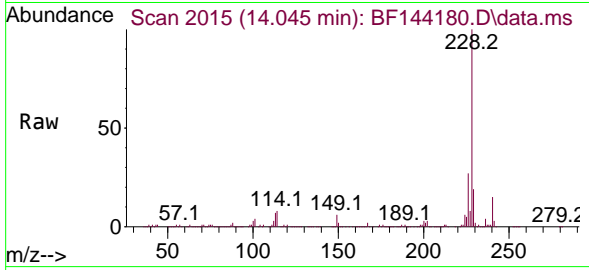


#81
 Benzo(a)anthracene
 Concen: 40.708 ng
 RT: 14.045 min Scan# 2015
 Delta R.T. -0.000 min
 Lab File: BF144180.D
 Acq: 06 Nov 2025 11:13

Instrument : BNA_F
 ClientSampleId : SSTDCCC040

Tgt Ion:228 Resp: 520973

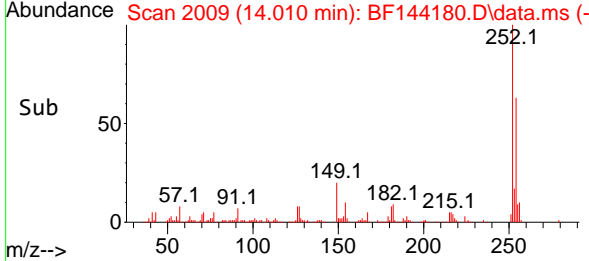
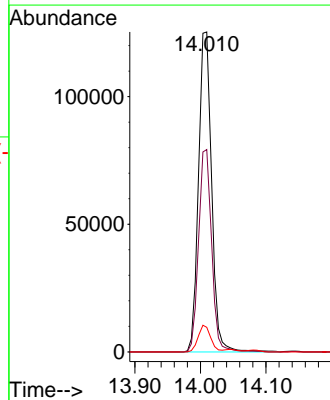
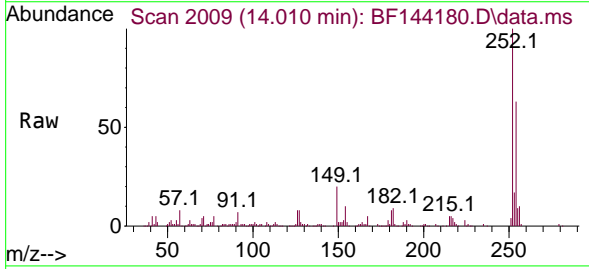
Ion	Ratio	Lower	Upper
228	100		
226	27.4	21.8	32.8
229	19.4	15.8	23.6

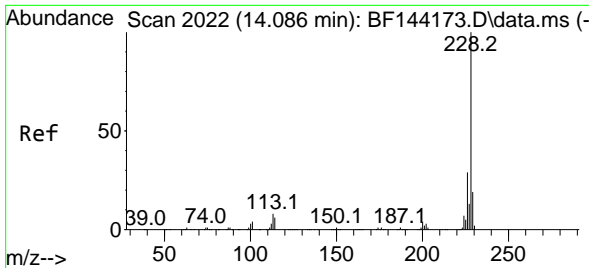


#82
 3,3'-Dichlorobenzidine
 Concen: 39.531 ng
 RT: 14.010 min Scan# 2009
 Delta R.T. 0.000 min
 Lab File: BF144180.D
 Acq: 06 Nov 2025 11:13

Tgt Ion:252 Resp: 173413

Ion	Ratio	Lower	Upper
252	100		
254	63.2	53.5	80.3
126	7.7	6.4	9.6



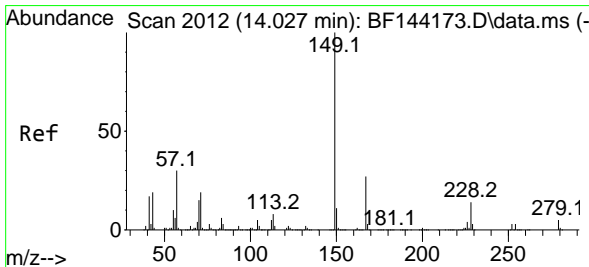
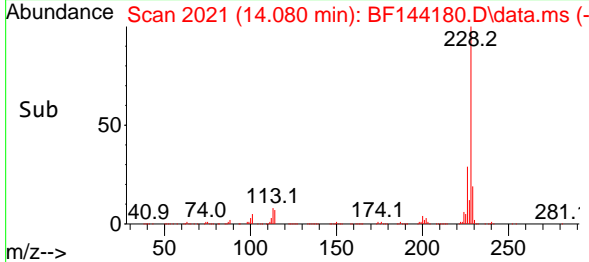
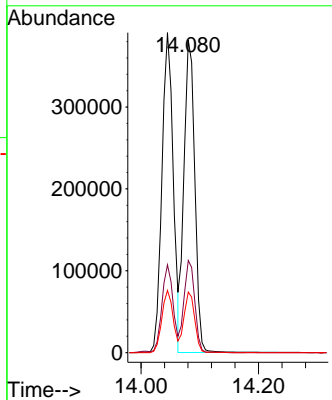
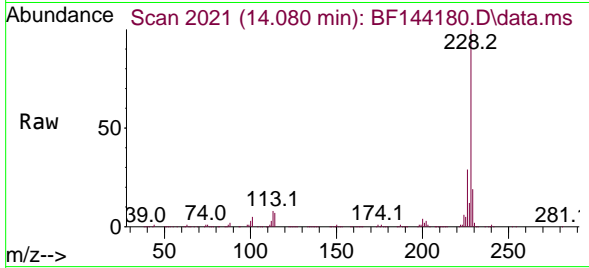


#83
 Chrysene
 Concen: 41.654 ng
 RT: 14.080 min Scan# 2021
 Delta R.T. -0.000 min
 Lab File: BF144180.D
 Acq: 06 Nov 2025 11:13

Instrument : BNA_F
 ClientSampleId : SSTDCCC040

Tgt Ion:228 Resp: 492102

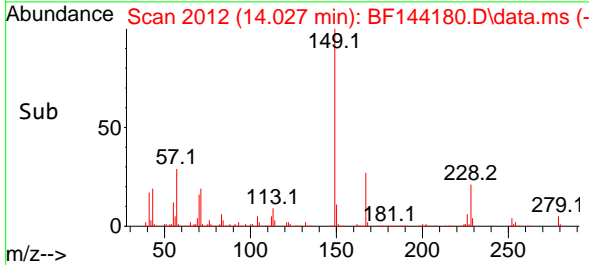
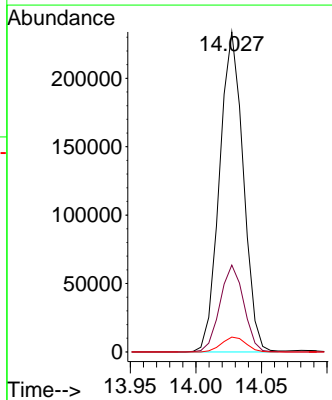
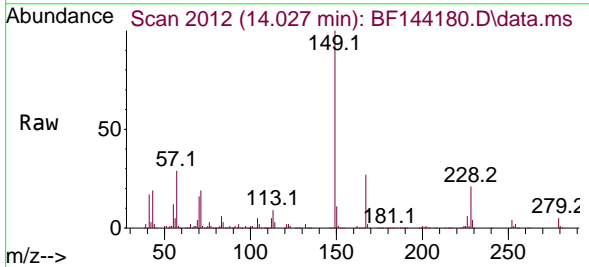
Ion	Ratio	Lower	Upper
228	100		
226	29.5	22.9	34.3
229	19.4	15.0	22.6

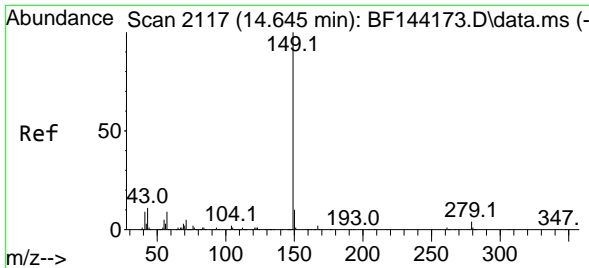


#84
 Bis(2-ethylhexyl)phthalate
 Concen: 41.744 ng
 RT: 14.027 min Scan# 2012
 Delta R.T. -0.000 min
 Lab File: BF144180.D
 Acq: 06 Nov 2025 11:13

Tgt Ion:149 Resp: 294872

Ion	Ratio	Lower	Upper
149	100		
167	27.1	21.8	32.8
279	4.7	3.7	5.5

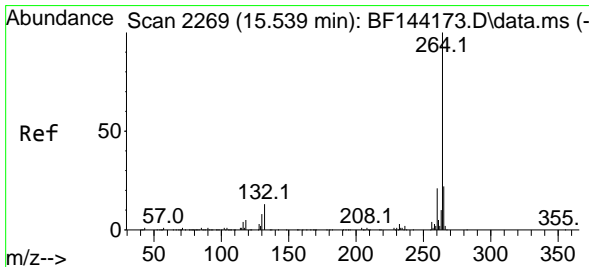
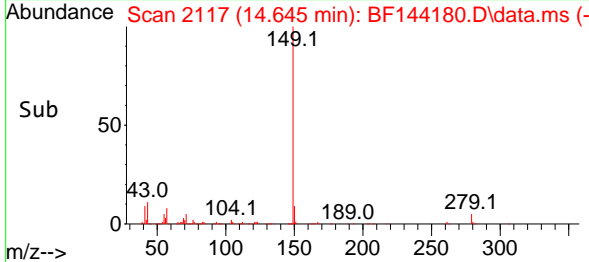
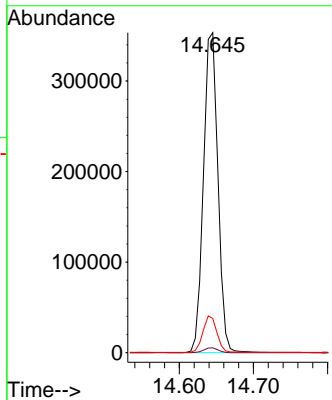
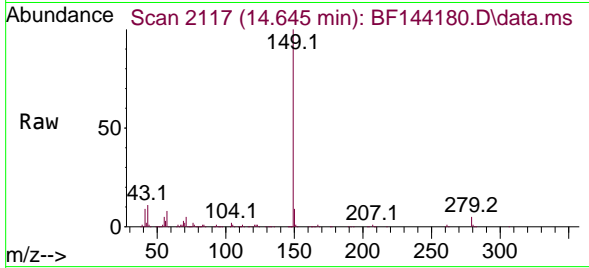




#85
 Di-n-octyl phthalate
 Concen: 39.268 ng
 RT: 14.645 min Scan# 2117
 Delta R.T. 0.000 min
 Lab File: BF144180.D
 Acq: 06 Nov 2025 11:13

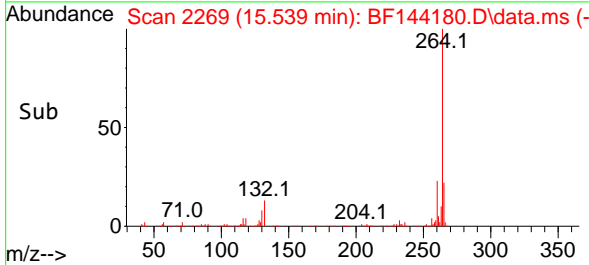
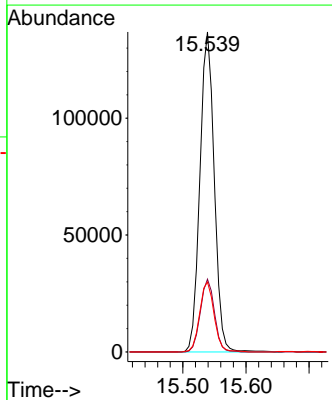
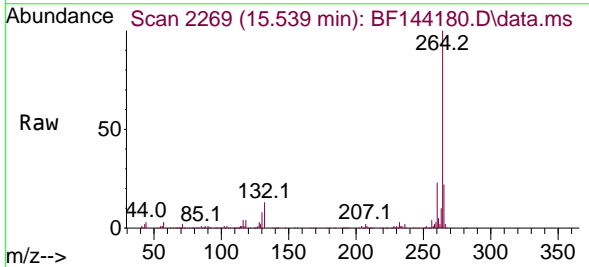
Instrument :
 BNA_F
 ClientSampleId :
 SSTDCCC040

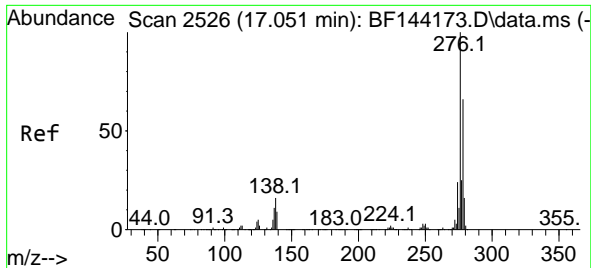
Tgt Ion:149 Resp: 478580
 Ion Ratio Lower Upper
 149 100
 167 1.5 1.2 1.8
 43 11.2 9.0 13.4



#86
 Perylene-d12
 Concen: 20.000 ng
 RT: 15.539 min Scan# 2269
 Delta R.T. -0.000 min
 Lab File: BF144180.D
 Acq: 06 Nov 2025 11:13

Tgt Ion:264 Resp: 216041
 Ion Ratio Lower Upper
 264 100
 260 22.7 17.1 25.7
 265 21.8 17.4 26.0





#87
 Indeno(1,2,3-cd)pyrene
 Concen: 41.598 ng
 RT: 17.045 min Scan# 2195
 Delta R.T. 0.012 min
 Lab File: BF144180.D
 Acq: 06 Nov 2025 11:13

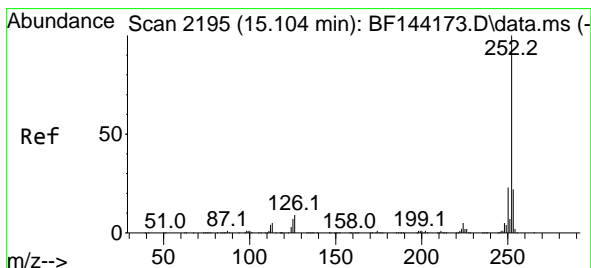
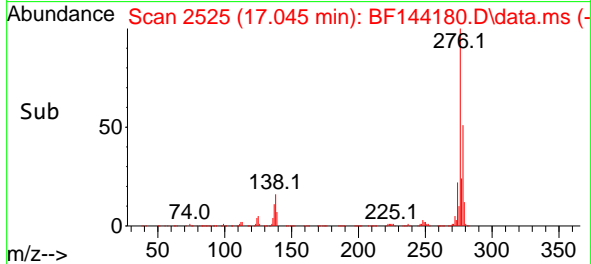
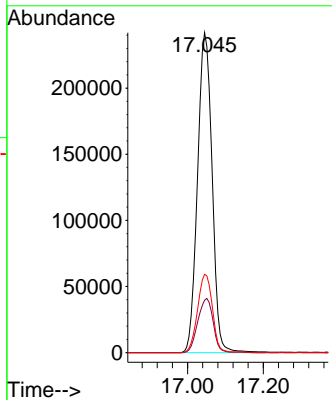
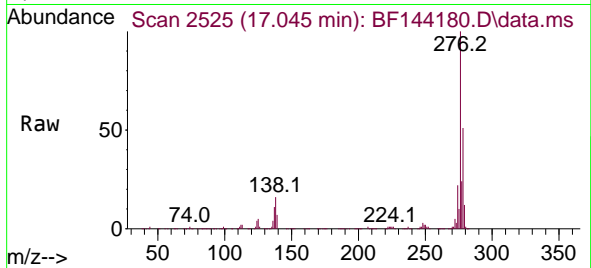
Instrument :

BNA_F

ClientSampleId :

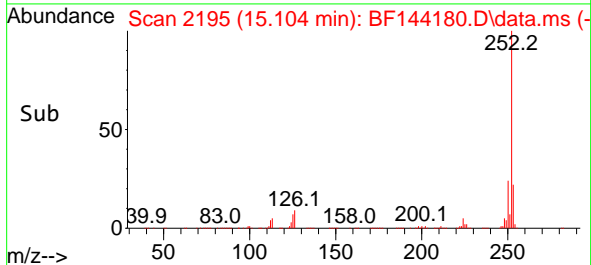
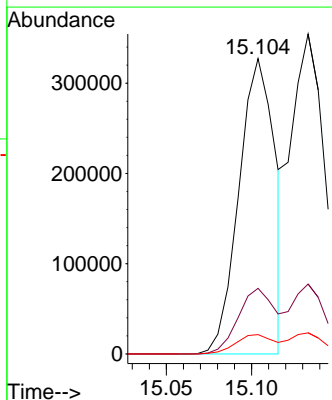
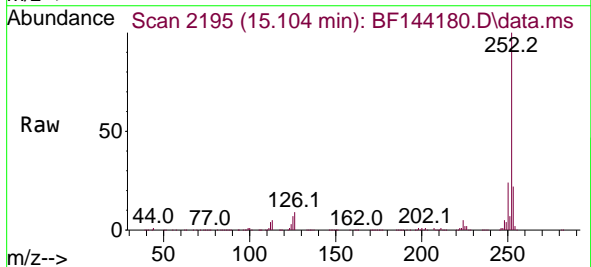
SSTDCCC040

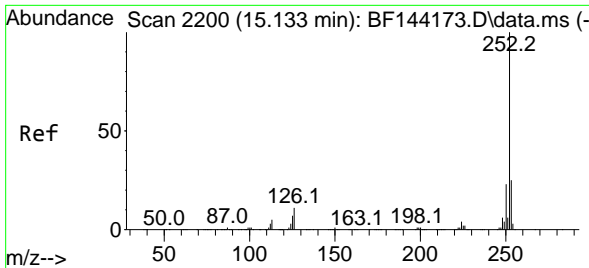
Tgt Ion:276 Resp: 645112
 Ion Ratio Lower Upper
 276 100
 138 17.6 13.9 20.9
 277 25.0 19.8 29.6



#88
 Benzo(b)fluoranthene
 Concen: 39.169 ng
 RT: 15.104 min Scan# 2195
 Delta R.T. 0.006 min
 Lab File: BF144180.D
 Acq: 06 Nov 2025 11:13

Tgt Ion:252 Resp: 481093
 Ion Ratio Lower Upper
 252 100
 253 22.2 17.4 26.2
 125 6.5 5.3 7.9



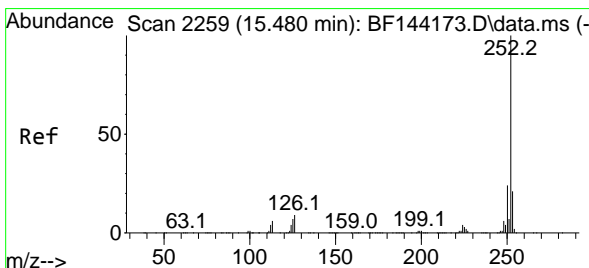
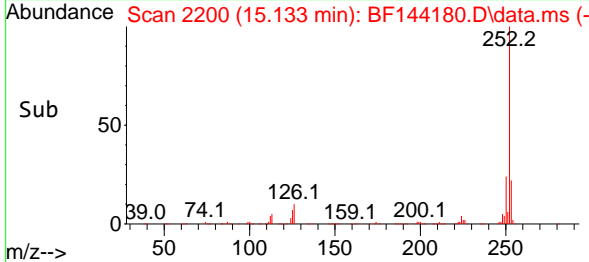
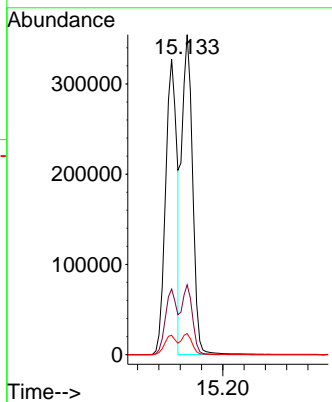
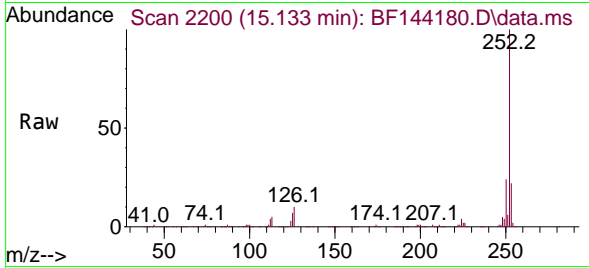


#89
 Benzo(k)fluoranthene
 Concen: 43.456 ng
 RT: 15.133 min Scan# 21
 Delta R.T. 0.006 min
 Lab File: BF144180.D
 Acq: 06 Nov 2025 11:13

Instrument : BNA_F
 ClientSampleId : SSTDCCC040

Tgt Ion:252 Resp: 499580

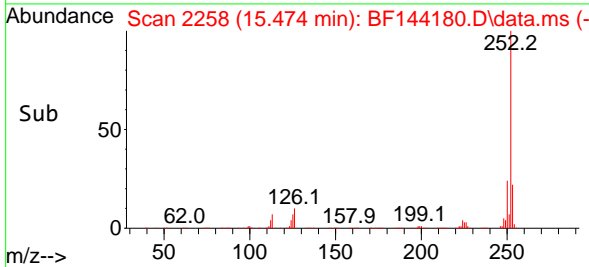
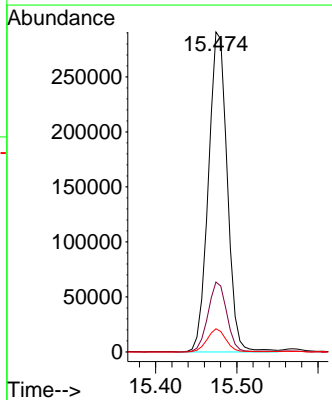
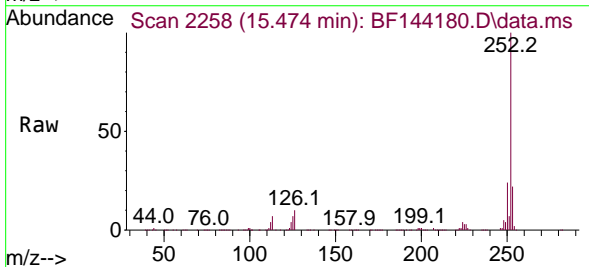
Ion	Ratio	Lower	Upper
252	100		
253	21.8	18.0	27.0
125	6.6	5.4	8.2

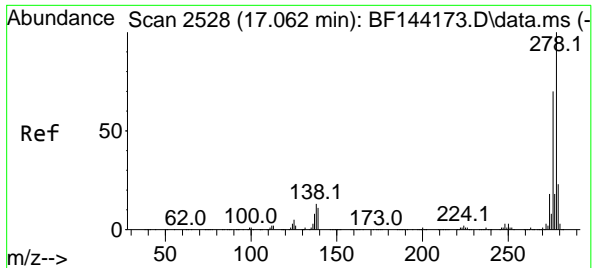


#90
 Benzo(a)pyrene
 Concen: 41.332 ng
 RT: 15.474 min Scan# 2258
 Delta R.T. -0.000 min
 Lab File: BF144180.D
 Acq: 06 Nov 2025 11:13

Tgt Ion:252 Resp: 468327

Ion	Ratio	Lower	Upper
252	100		
253	21.8	16.7	25.1
125	7.2	5.7	8.5





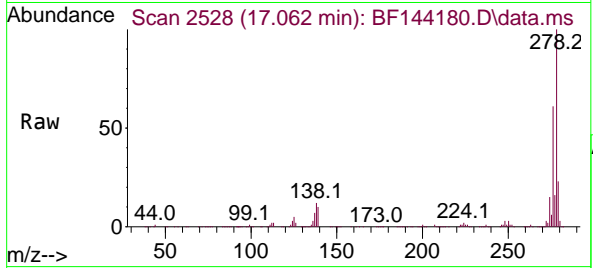
#91
 Dibenzo(a,h)anthracene
 Concen: 41.475 ng
 RT: 17.062 min Scan# 21
 Delta R.T. 0.012 min
 Lab File: BF144180.D
 Acq: 06 Nov 2025 11:13

Instrument :

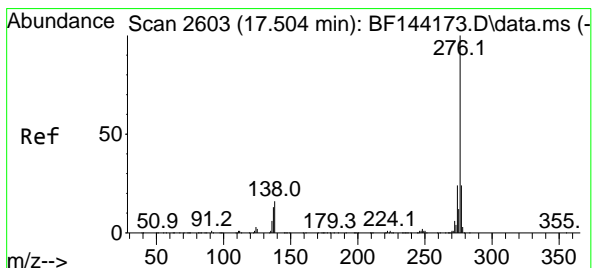
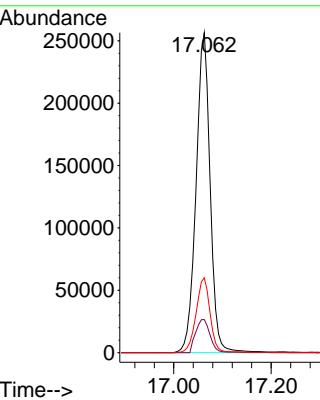
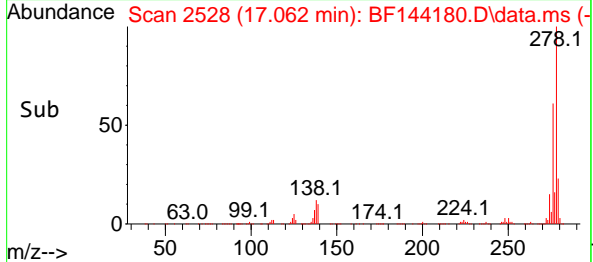
BNA_F

ClientSampleId :

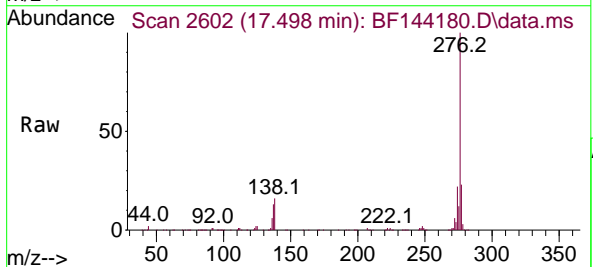
SSTDCCC040



Tgt Ion:278 Resp: 516567
 Ion Ratio Lower Upper
 278 100
 139 10.3 9.1 13.7
 279 23.4 18.2 27.4



#92
 Benzo(g,h,i)perylene
 Concen: 42.043 ng
 RT: 17.498 min Scan# 2602
 Delta R.T. 0.006 min
 Lab File: BF144180.D
 Acq: 06 Nov 2025 11:13



Tgt Ion:276 Resp: 517098
 Ion Ratio Lower Upper
 276 100
 277 22.9 19.0 28.4
 138 15.7 12.9 19.3

