

Data Path : Z:\voasrv\HPCHEM1\MSVOA_L\Data\VL101425\
 Data File : VL043107.D
 Acq On : 14 Oct 2025 12:01
 Operator : SY/MD
 Sample : VSTDIC001
 Misc : 400mL/MSVOA_L
 ALS Vial : 1 Sample Multiplier: 1

Instrument :
 MSVOA_L
 ClientSampleId :
 VSTDIC001

Manual Integrations
 APPROVED

Reviewed By : Semsettin Yesilyurt 10/16/2025
 Supervised By : Mahesh Dadoda 10/16/2025

Quant Time: Oct 15 01:52:45 2025
 Quant Method : Z:\voasrv\HPCHEM1\MSVOA_L\methods\VL101425AIR.M
 Quant Title : AIR ANALYSIS BY METHOD TO-15 Instrument: MSVOA_L Fri Aug
 QLast Update : Wed Oct 15 01:49:43 2025
 Response via : Initial Calibration

Compound	R.T.	QIon	Response	Conc	Units	Dev(Min)
Internal Standards						
1) Bromochloromethane	2.787	49	102307	10.000	ppbv	0.00
33) 1,4-Difluorobenzene	3.955	114	336268	10.000	ppbv	0.00
55) Chlorobenzene-d5	8.878	117	305409	10.000	ppbv	0.00

System Monitoring Compounds						
68) 1-Bromo-4-Fluorobenzene	10.374	95	235307	9.912	ppbv	0.00
Spiked Amount	10.000	Range	65 - 135	Recovery	=	99.100%

Target Compounds	R.T.	QIon	Response	Conc	Units	Qvalue
2) Dichlorodifluoromethane	1.499	85	15620	1.074	ppbv	99
3) Chlorodifluoromethane	1.476	51	16692	1.061	ppbv #	91
4) Chloromethane	1.534	50	6353	1.103	ppbv	93
5) Vinyl Chloride	1.580	62	5694	1.008	ppbv	96
6) Bromomethane	1.667	94	3462	1.117	ppbv	98
7) Chloroethane	1.706	64	2615	1.132	ppbv #	82
8) Dichlorotetrafluoroethane	1.554	85	12940	1.101	ppbv	98
9) Propene	1.483	41	7291	1.045	ppbv	100
10) Heptane	4.978	43	22011	1.100	ppbv	99
11) Trichlorofluoromethane	1.877	101	14927	1.049	ppbv	85
12) 1,1,2-Trichlorotrifluo...	2.140	101	12484	1.090	ppbv	99
13) Ethanol	1.722	45	3143	1.217	ppbv	83
14) Bromoethene	1.780	108	4440	1.043	ppbv #	90
15) Acetone	1.835	43	15572	1.123	ppbv	90
16) 1,3-Butadiene	1.609	39	7157	1.089	ppbv	97
17) tert-Butyl alcohol	2.043	59	20941	1.106	ppbv #	90
18) 1,1-Dichloroethene	2.036	96	5510	1.103	ppbv	88
19) Isopropyl Alcohol	1.887	45	9796	1.141	ppbv #	85
20) Methylene Chloride	2.062	84	6261	1.149	ppbv	96
21) Allyl Chloride	2.094	41	10737	1.055	ppbv #	82
22) trans-1,2-Dichloroethene	2.340	96	7119	1.193	ppbv	92
23) Vinyl Acetate	2.463	43	19477	0.964	ppbv	99
24) 1,1-Dichloroethane	2.405	63	12656	1.097	ppbv #	94
25) Ethyl Acetate	2.832	43	37093	1.085	ppbv	98
26) Hexane	2.826	57	17152	1.089	ppbv	98
27) Carbon Disulfide	2.149	76	15760	1.092	ppbv #	60
28) Methyl tert-Butyl Ether	2.441	73	7847	1.095	ppbv #	87
29) Chloroform	2.845	83	24527	1.074	ppbv	90
30) Cyclohexane	3.855	84	14819	1.078	ppbv	97
31) cis-1,2-Dichloroethene	2.719	61	16311	1.084	ppbv	93
32) 1,1,1-Trichloroethane	3.366	97	24948	1.049	ppbv	98
34) 2-Butanone	2.557	43	23811	1.047	ppbv	100
35) Carbon Tetrachloride	3.761	117	24969	1.033	ppbv	93
36) Benzene	3.651	78	32940	1.040	ppbv	99
37) 1,2-Dichloroethane	3.217	62	19213	1.053	ppbv	100
38) Trichloroethene	4.544	130	13512	1.023	ppbv	96
39) 1,2-Dichloropropane	4.311	63	12435	1.073	ppbv	92
40) 1,4-Dioxane	4.593	88	5579m	1.077	ppbv	
41) Tetrahydrofuran	3.056	42	13251	1.044	ppbv	99
42) Bromodichloromethane	4.486	83	26069	1.032	ppbv #	94
43) Methyl Methacrylate	4.878	69	17195	1.064	ppbv	97
44) 2,2,4-Trimethylpentane	4.638	57	57382	1.084	ppbv	96
45) t-1,3-Dichloropropene	6.415	75	16874m	1.045	ppbv	

Data Path : Z:\voasrv\HPCHEM1\MSVOA_L\Data\VL101425\
 Data File : VL043107.D
 Acq On : 14 Oct 2025 12:01
 Operator : SY/MD
 Sample : VSTDIC001
 Misc : 400mL/MSVOA_L
 ALS Vial : 1 Sample Multiplier: 1

Instrument :
 MSVOA_L
 ClientSampleId :
 VSTDIC001

Manual Integrations
 APPROVED

Reviewed By :Semsettin Yesilyurt 10/16/2025
 Supervised By :Mahesh Dadoda 10/16/2025

Quant Time: Oct 15 01:52:45 2025
 Quant Method : Z:\voasrv\HPCHEM1\MSVOA_L\methods\VL101425AIR.M
 Quant Title : AIR ANALYSIS BY METHOD TO-15 Instrument: MSVOA_L Fri Aug
 QLast Update : Wed Oct 15 01:49:43 2025
 Response via : Initial Calibration

Compound	R.T.	QIon	Response	Conc	Units	Dev(Min)
46) cis-1,3-Dichloropropene	5.596	75	19830	1.029	ppbv	94
47) 1,1,2-Trichloroethane	6.577	97	12876	1.030	ppbv	98
48) Dibromochloromethane	7.383	129	21874	1.046	ppbv	97
49) Bromoform	9.480	173	17320	1.019	ppbv	96
50) 4-Methyl-2-Pentanone	5.752	43	33269m	1.061	ppbv	
51) 2-Hexanone	7.441	43	23817	1.018	ppbv #	95
52) Tetrachloroethene	8.224	164	12319	1.079	ppbv	91
53) Toluene	6.930	91	39079	1.040	ppbv	98
54) 1,2-Dibromoethane	7.652	107	19711	0.999	ppbv	88
56) 1,1,1,2-Tetrachloroethane	8.920	131	20279	1.053	ppbv	96
57) Chlorobenzene	8.920	112	30824	1.079	ppbv	97
58) Ethyl Benzene	9.351	91	55420	1.049	ppbv	96
59) m/p-Xylene	9.552	91	88998m	2.127	ppbv	
60) o-Xylene	9.963	91	44925	1.088	ppbv	100
61) Styrene	9.869	104	19809	1.063	ppbv	98
62) Isopropylbenzene	10.535	105	81579	1.093	ppbv	99
63) 1,1,2,2-Tetrachloroethane	9.959	83	28230	1.021	ppbv	100
64) n-propylbenzene	10.985	120	21685	1.098	ppbv	98
65) tert-Butylbenzene	11.529	119	72781	1.105	ppbv	99
66) Benzyl Chloride	11.613	91	7918	1.076	ppbv	97
67) sec-Butylbenzene	11.765	105	103152	1.103	ppbv	100
69) p-Isopropyltoluene	11.924	119	88443	1.113	ppbv	99
70) n-Butylbenzene	12.280	91	86120	1.100	ppbv	98
71) 2-Chlorotoluene	10.898	91	60994	1.072	ppbv	99
72) 4-Ethyltoluene	11.121	105	53788	1.059	ppbv	98
73) 1,3,5-Trimethylbenzene	11.202	105	44786	1.070	ppbv	98
74) 1,2,4-Trimethylbenzene	11.532	105	52118	1.112	ppbv	95
75) 1,3-Dichlorobenzene	11.604	146	29186	1.074	ppbv	99
76) 1,4-Dichlorobenzene	11.668	146	29225	1.066	ppbv	98
77) 1,2-Dichlorobenzene	11.947	146	29146	1.109	ppbv	98
78) Hexachloro-1,3-Butadiene	13.879	225	23330	1.146	ppbv	99
79) Naphthalene	13.510	128	53930	1.114	ppbv	98
80) Naphthalene,2-methyl-	14.458	142	10851	0.849	ppbv	94
81) 1,2,4-Trichlorobenzene	13.439	180	22161	1.090	ppbv	98

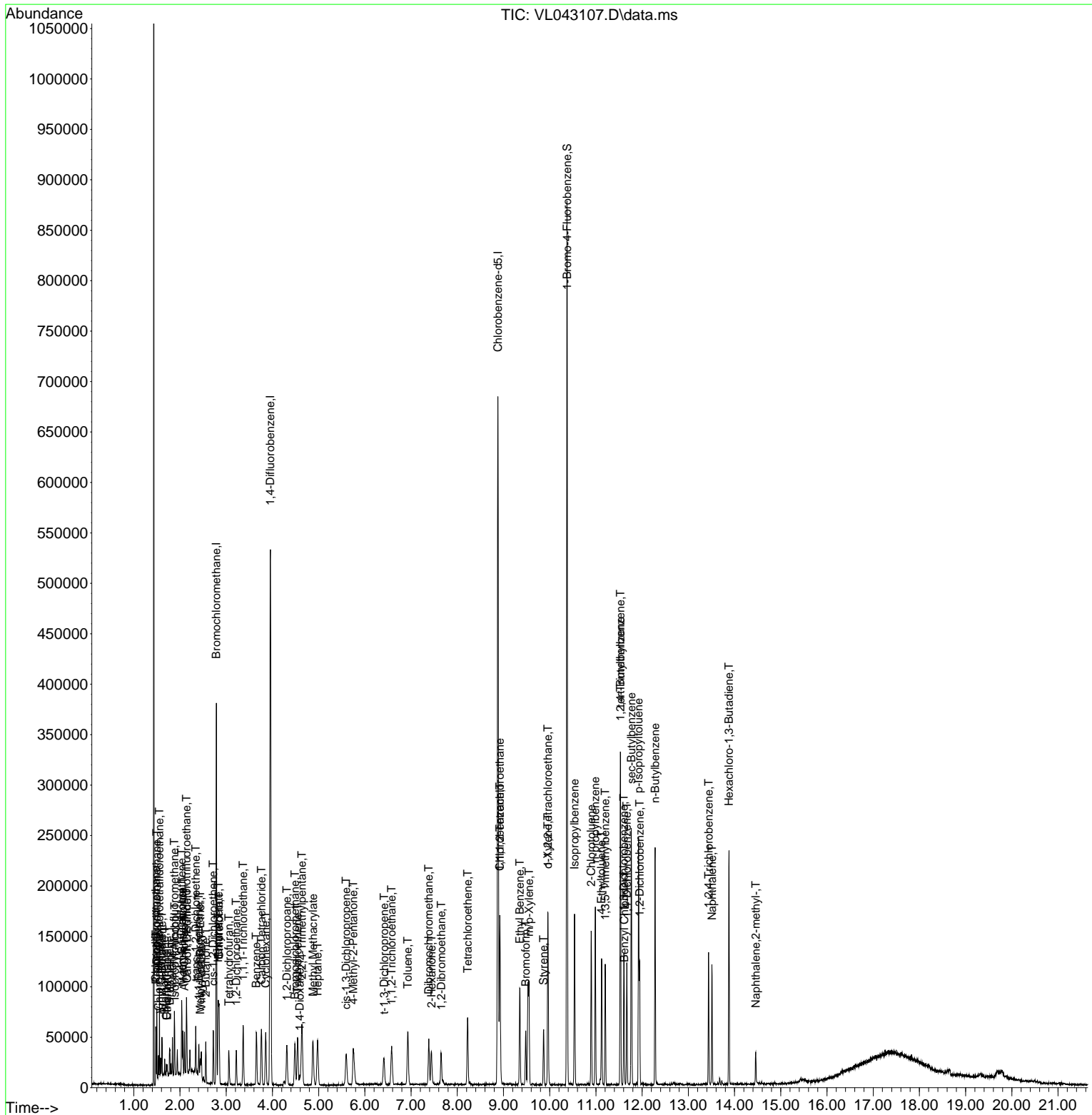
(#) = qualifier out of range (m) = manual integration (+) = signals summed

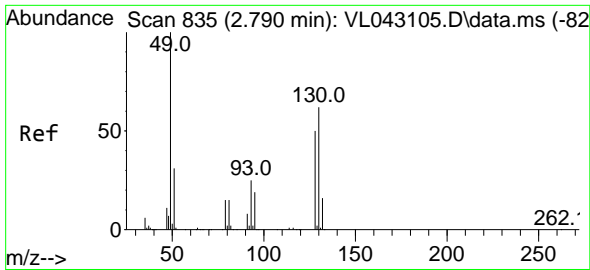
Data Path : Z:\voasrv\HPCHEM1\MSVOA_L\Data\VL101425\
 Data File : VL043107.D
 Acq On : 14 Oct 2025 12:01
 Operator : SY/MD
 Sample : VSTDIC001
 Misc : 400mL/MSVOA_L
 ALS Vial : 1 Sample Multiplier: 1

Instrument :
 MSVOA_L
ClientSampleId :
 VSTDIC001

Quant Time: Oct 15 01:52:45 2025
 Quant Method : Z:\voasrv\HPCHEM1\MSVOA_L\methods\VL101425AIR.M
 Quant Title : AIR ANALYSIS BY METHOD TO-15 Instrument: MSVOA_L Fri Aug
 QLast Update : Wed Oct 15 01:49:43 2025
 Response via : Initial Calibration

Manual Integrations
APPROVED
 Reviewed By : Semsettin Yesilyurt 10/16/2025
 Supervised By : Mahesh Dadoda 10/16/2025





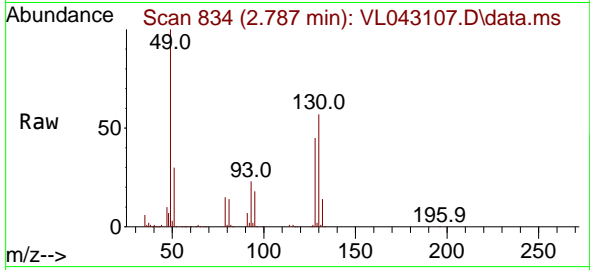
#1
 Bromochloromethane
 Concen: 10.000 ppbv
 RT: 2.787 min Scan# 81
 Delta R.T. -0.003 min
 Lab File: VL043107.D
 Acq: 14 Oct 2025 12:01

Instrument :

MSVOA_L

ClientSampleId :

VSTDIC001

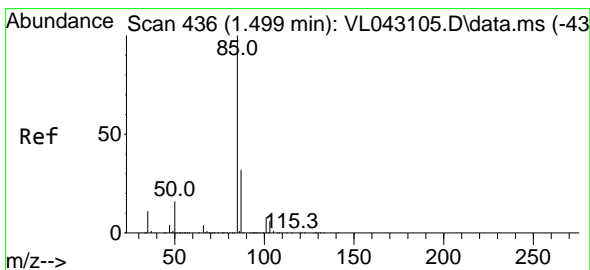
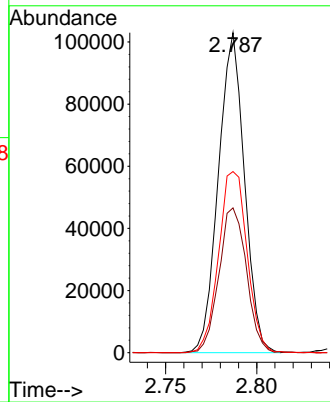
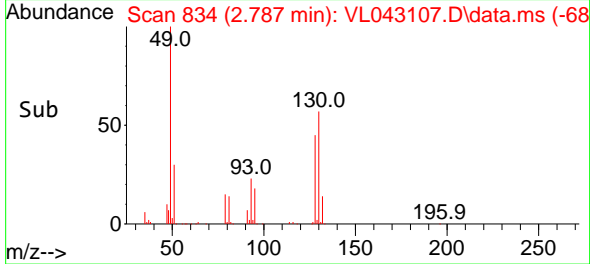


Tgt Ion: 49 Resp: 10230
 Ion Ratio Lower Upper
 49 100
 128 48.0 24.4 73.4
 130 62.0 31.0 93.0

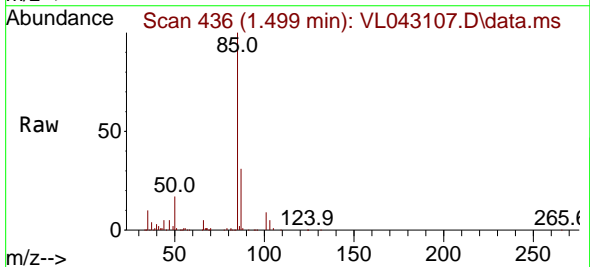
Manual Integrations

APPROVED

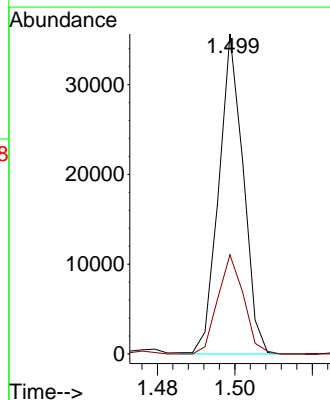
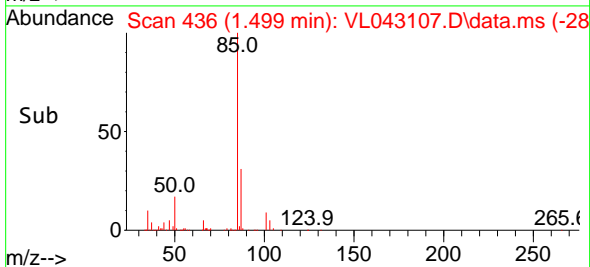
Reviewed By :Semsettin Yesilyurt 10/16/2025
 Supervised By :Mahesh Dadoda 10/16/2025

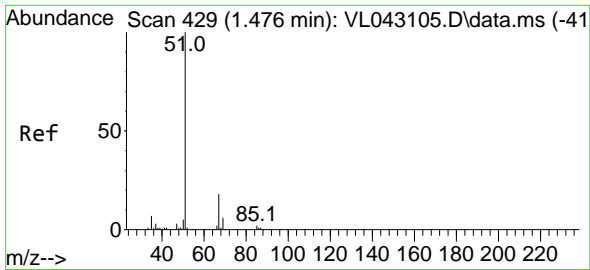


#2
 Dichlorodifluoromethane
 Concen: 1.074 ppbv
 RT: 1.499 min Scan# 436
 Delta R.T. -0.000 min
 Lab File: VL043107.D
 Acq: 14 Oct 2025 12:01



Tgt Ion: 85 Resp: 15620
 Ion Ratio Lower Upper
 85 100
 87 31.0 25.3 37.9





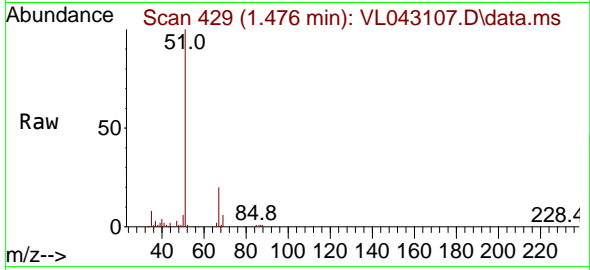
#3
 Chlorodifluoromethane
 Concen: 1.061 ppbv
 RT: 1.476 min Scan# 41
 Delta R.T. -0.000 min
 Lab File: VL043107.D
 Acq: 14 Oct 2025 12:01

Instrument :

MSVOA_L

ClientSampleId :

VSTDIC001

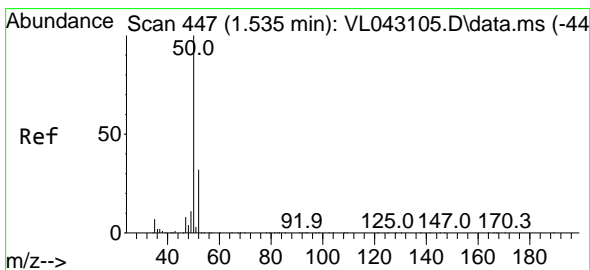
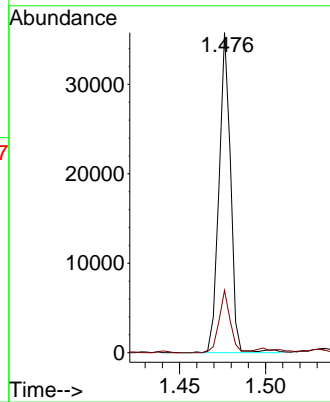
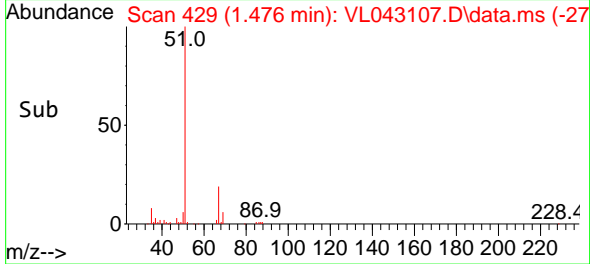


Tgt Ion: 51 Resp: 1669
 Ion Ratio Lower Upper
 51 100
 67 22.8 15.1 22.7

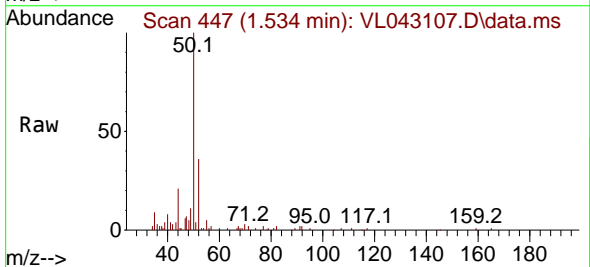
Manual Integrations

APPROVED

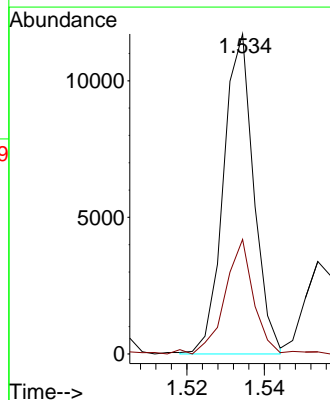
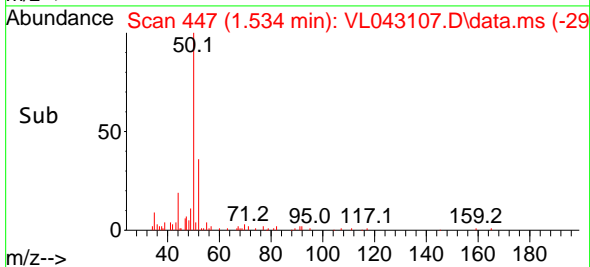
Reviewed By :Semsettin Yesilyurt 10/16/2025
 Supervised By :Mahesh Dadoda 10/16/2025

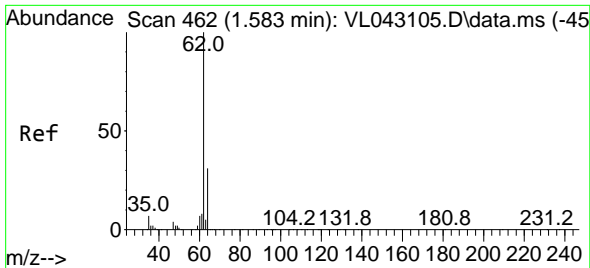


#4
 Chloromethane
 Concen: 1.103 ppbv
 RT: 1.534 min Scan# 447
 Delta R.T. -0.000 min
 Lab File: VL043107.D
 Acq: 14 Oct 2025 12:01



Tgt Ion: 50 Resp: 6353
 Ion Ratio Lower Upper
 50 100
 52 35.6 25.2 37.8





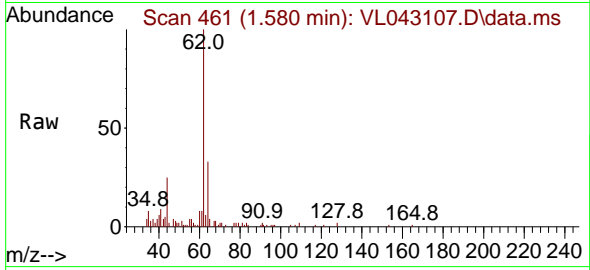
#5
 Vinyl Chloride
 Concen: 1.008 ppbv
 RT: 1.580 min Scan# 462
 Delta R.T. -0.003 min
 Lab File: VL043107.D
 Acq: 14 Oct 2025 12:01

Instrument :

MSVOA_L

ClientSampleId :

VSTDICC001

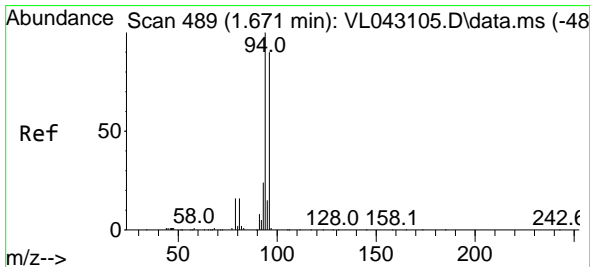
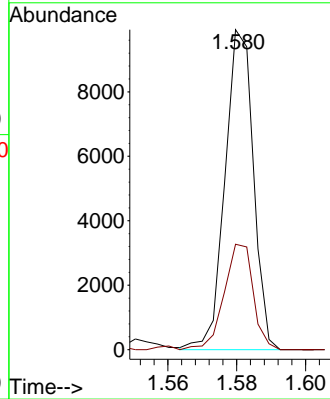
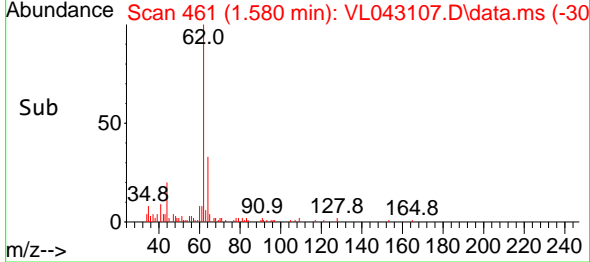


Tgt Ion: 62 Resp: 5694
 Ion Ratio Lower Upper
 62 100
 64 32.9 24.6 36.8

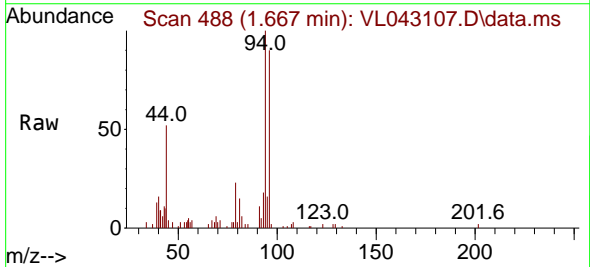
Manual Integrations

APPROVED

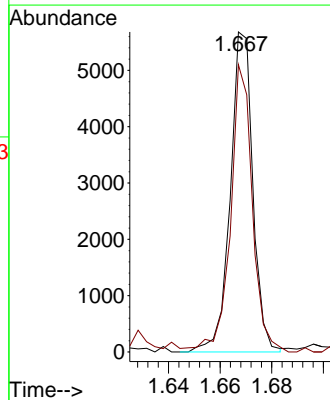
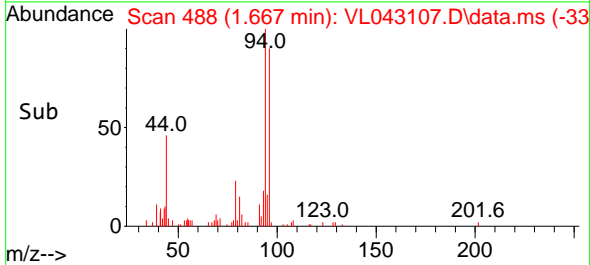
Reviewed By :Semsettin Yesilyurt 10/16/2025
 Supervised By :Mahesh Dadoda 10/16/2025

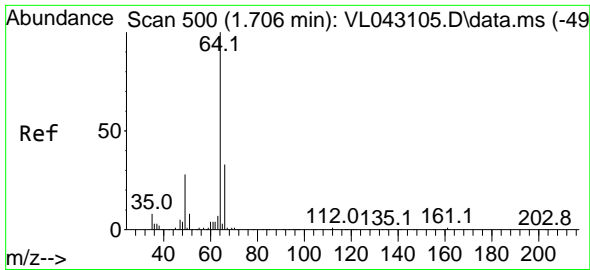


#6
 Bromomethane
 Concen: 1.117 ppbv
 RT: 1.667 min Scan# 488
 Delta R.T. -0.003 min
 Lab File: VL043107.D
 Acq: 14 Oct 2025 12:01



Tgt Ion: 94 Resp: 3462
 Ion Ratio Lower Upper
 94 100
 96 88.6 72.2 108.4





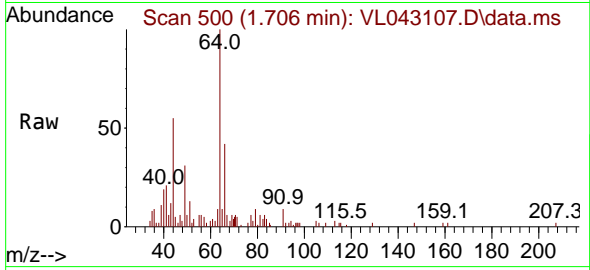
#7
 Chloroethane
 Concen: 1.132 ppbv
 RT: 1.706 min Scan# 500
 Delta R.T. -0.000 min
 Lab File: VL043107.D
 Acq: 14 Oct 2025 12:01

Instrument :

MSVOA_L

Client Sample Id :

VSTDICC001

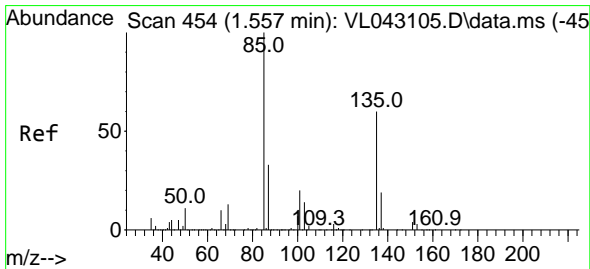
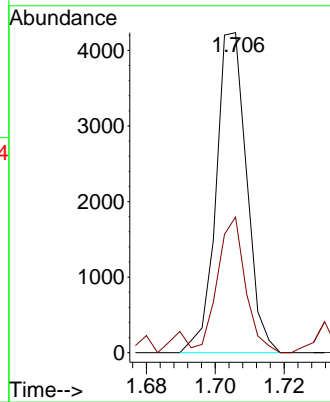
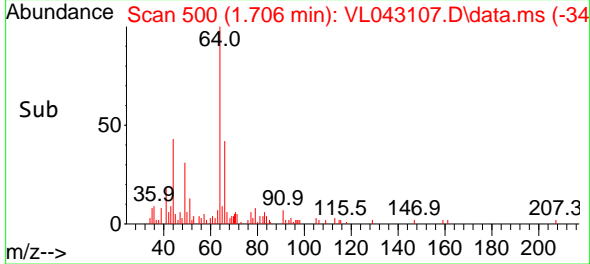


Tgt Ion: 64 Resp: 261
 Ion Ratio Lower Upper
 64 100
 66 42.4 26.0 39.0

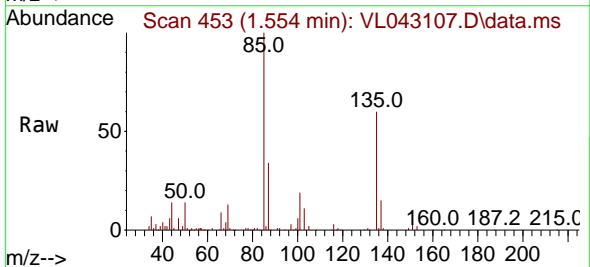
Manual Integrations

APPROVED

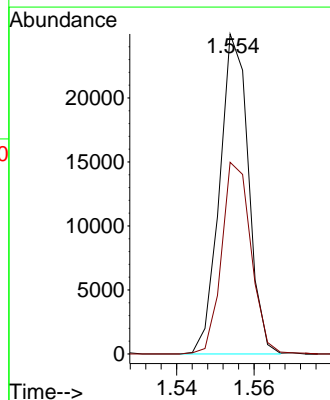
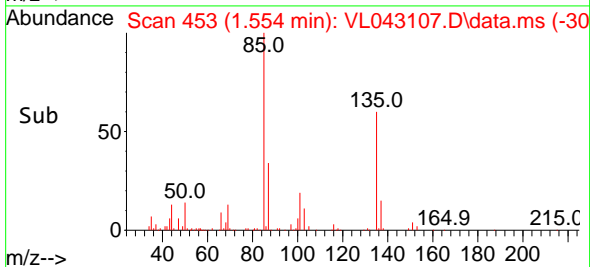
Reviewed By :Semsettin Yesilyurt 10/16/2025
 Supervised By :Mahesh Dadoda 10/16/2025

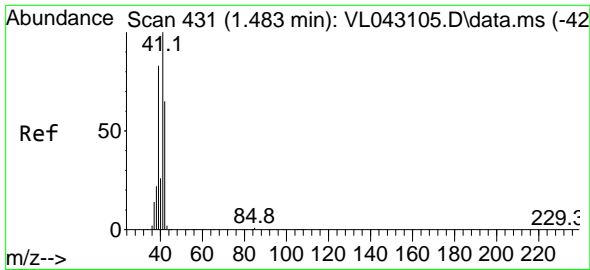


#8
 Dichlorotetrafluoroethane
 Concen: 1.101 ppbv
 RT: 1.554 min Scan# 453
 Delta R.T. -0.003 min
 Lab File: VL043107.D
 Acq: 14 Oct 2025 12:01



Tgt Ion: 85 Resp: 12940
 Ion Ratio Lower Upper
 85 100
 135 61.5 48.2 72.4





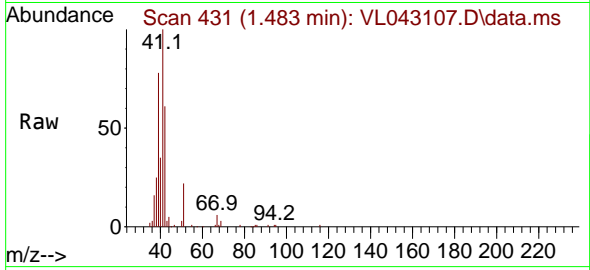
#9
 Propene
 Concen: 1.045 ppbv
 RT: 1.483 min Scan# 41
 Delta R.T. -0.000 min
 Lab File: VL043107.D
 Acq: 14 Oct 2025 12:01

Instrument :

MSVOA_L

ClientSampleId :

VSTDIC001

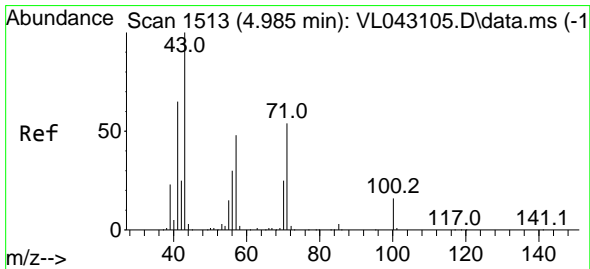
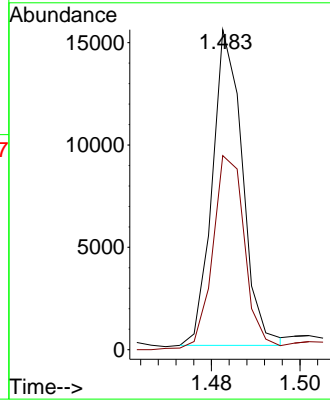
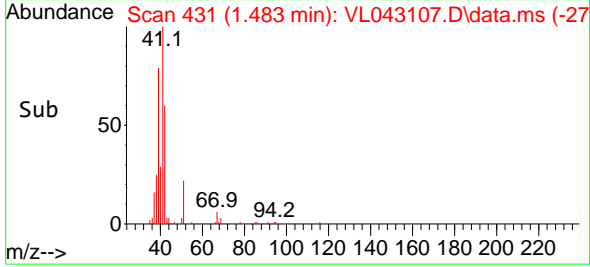


Tgt Ion: 41 Resp: 729
 Ion Ratio Lower Upper
 41 100
 42 68.5 55.1 82.7

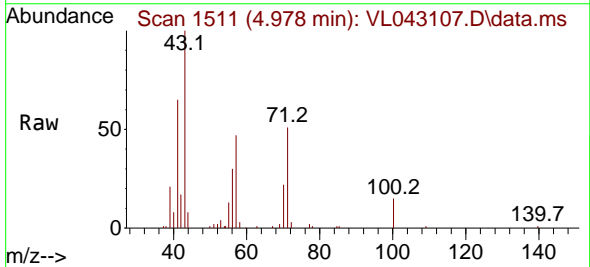
Manual Integrations

APPROVED

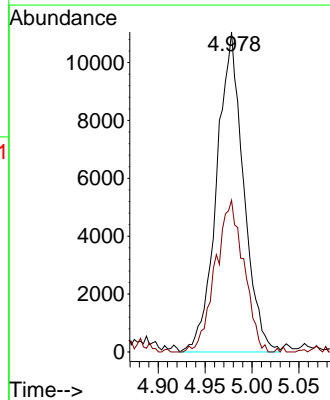
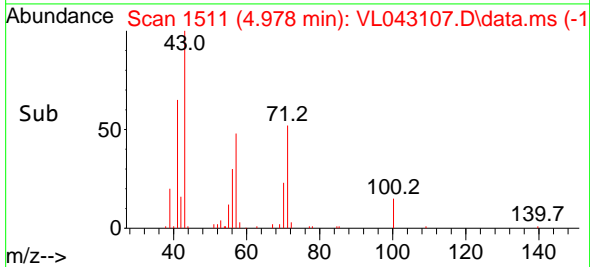
Reviewed By :Semsettin Yesilyurt 10/16/2025
 Supervised By :Mahesh Dadoda 10/16/2025

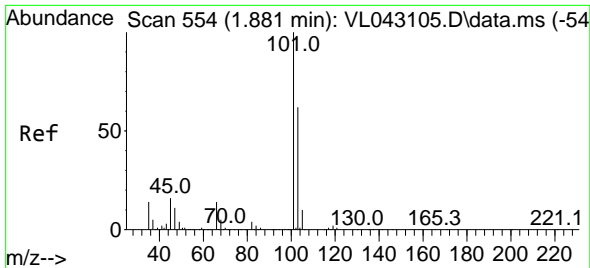


#10
 Heptane
 Concen: 1.100 ppbv
 RT: 4.978 min Scan# 1511
 Delta R.T. -0.007 min
 Lab File: VL043107.D
 Acq: 14 Oct 2025 12:01



Tgt Ion: 43 Resp: 22011
 Ion Ratio Lower Upper
 43 100
 57 50.4 40.8 61.2





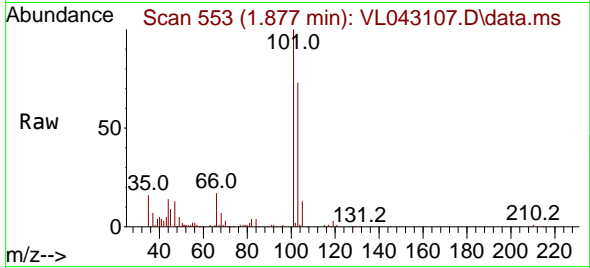
#11
 Trichlorofluoromethane
 Concen: 1.049 ppbv
 RT: 1.877 min Scan# 511
 Delta R.T. -0.003 min
 Lab File: VL043107.D
 Acq: 14 Oct 2025 12:01

Instrument :

MSVOA_L

ClientSampleId :

VSTDIC001

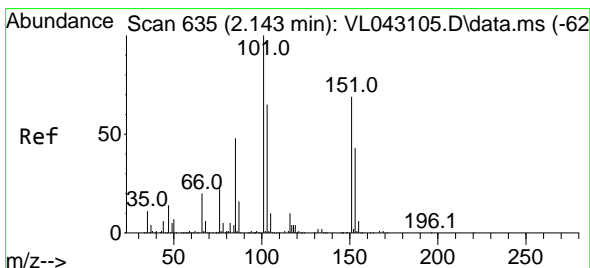
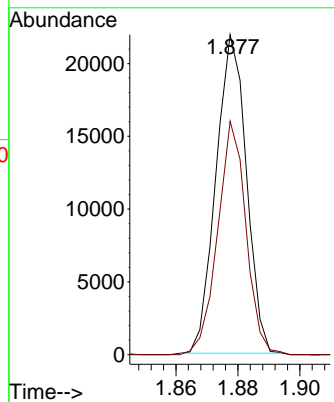
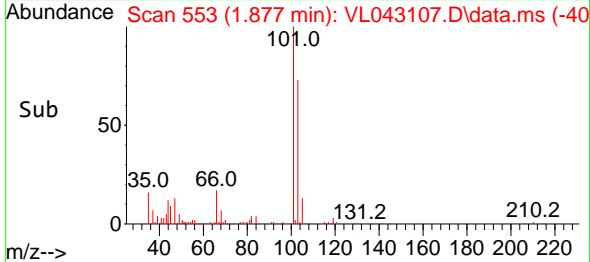


Tgt Ion:101 Resp: 1492
 Ion Ratio Lower Upper
 101 100
 103 73.3 49.3 73.9

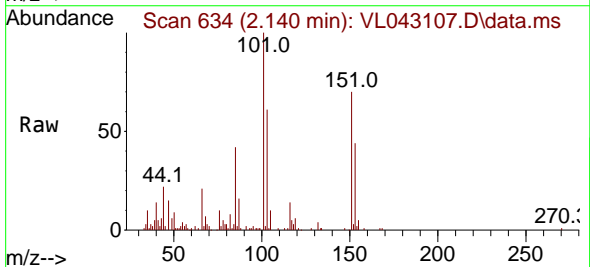
Manual Integrations

APPROVED

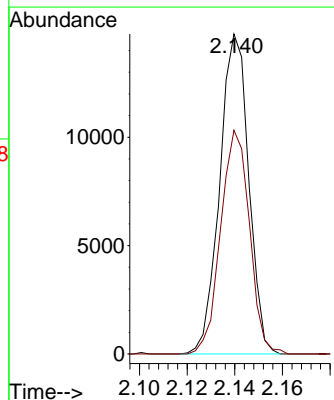
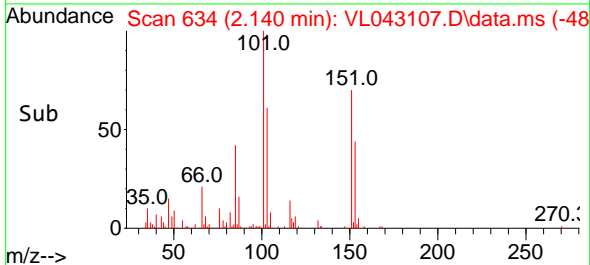
Reviewed By :Semsettin Yesilyurt 10/16/2025
 Supervised By :Mahesh Dadoda 10/16/2025

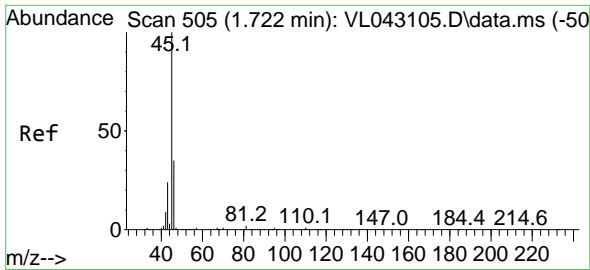


#12
 1,1,2-Trichlorotrifluoroethane
 Concen: 1.090 ppbv
 RT: 2.140 min Scan# 634
 Delta R.T. -0.003 min
 Lab File: VL043107.D
 Acq: 14 Oct 2025 12:01



Tgt Ion:101 Resp: 12484
 Ion Ratio Lower Upper
 101 100
 151 69.5 54.7 82.1





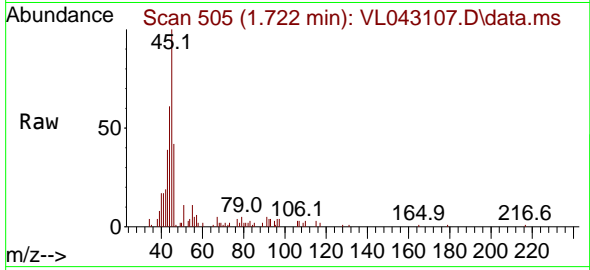
#13
 Ethanol
 Concen: 1.217 ppbv
 RT: 1.722 min Scan# 505
 Delta R.T. -0.000 min
 Lab File: VL043107.D
 Acq: 14 Oct 2025 12:01

Instrument :

MSVOA_L

Client Sample Id :

VSTDIC001

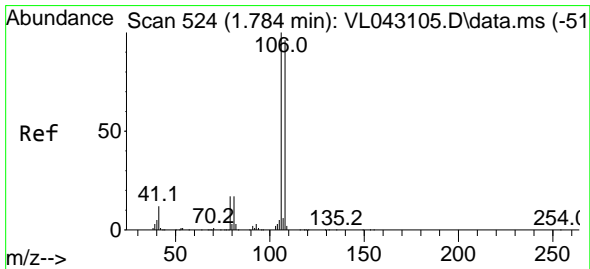
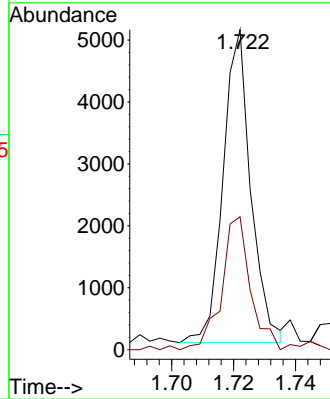
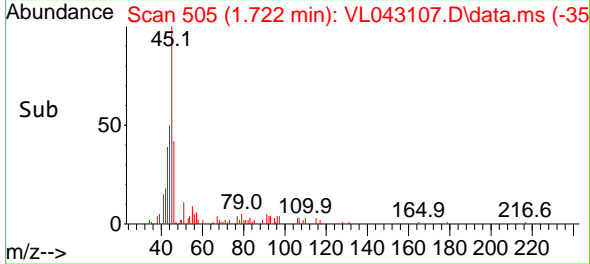


Tgt Ion: 45 Resp: 314
 Ion Ratio Lower Upper
 45 100
 46 46.7 14.7 58.9

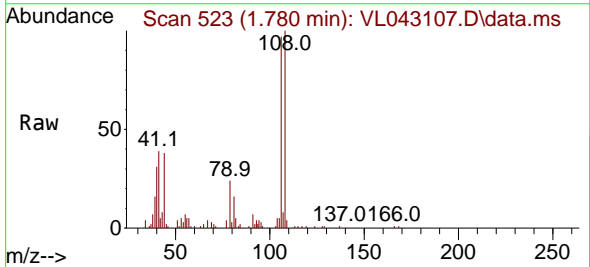
Manual Integrations

APPROVED

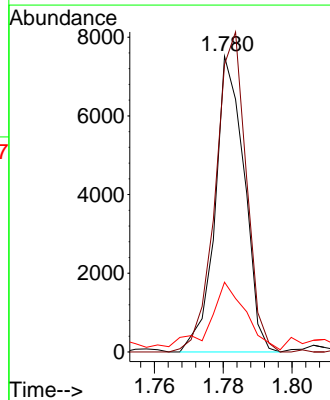
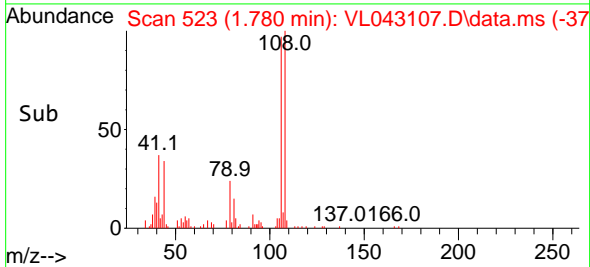
Reviewed By :Semsettin Yesilyurt 10/16/2025
 Supervised By :Mahesh Dadoda 10/16/2025

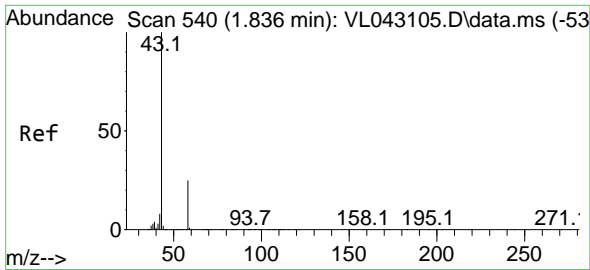


#14
 Bromoethene
 Concen: 1.043 ppbv
 RT: 1.780 min Scan# 523
 Delta R.T. -0.003 min
 Lab File: VL043107.D
 Acq: 14 Oct 2025 12:01



Tgt Ion:108 Resp: 4440
 Ion Ratio Lower Upper
 108 100
 106 113.7 84.4 126.6
 79 28.9 15.3 22.9#





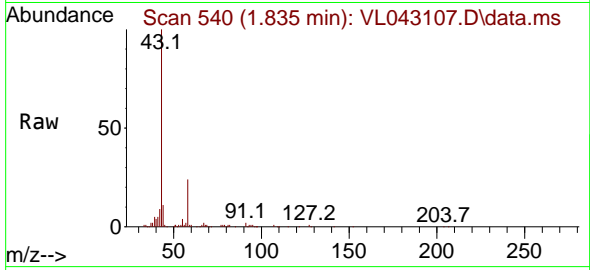
#15
 Acetone
 Concen: 1.123 ppbv
 RT: 1.835 min Scan# 540
 Delta R.T. -0.000 min
 Lab File: VL043107.D
 Acq: 14 Oct 2025 12:01

Instrument :

MSVOA_L

ClientSampleId :

VSTDIC001

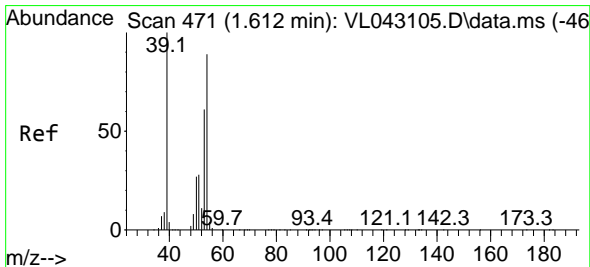
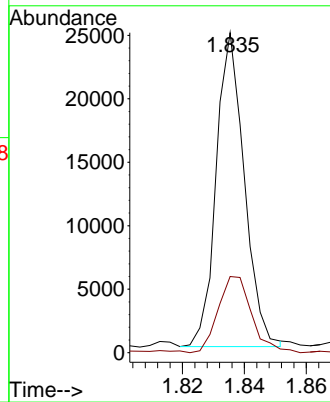
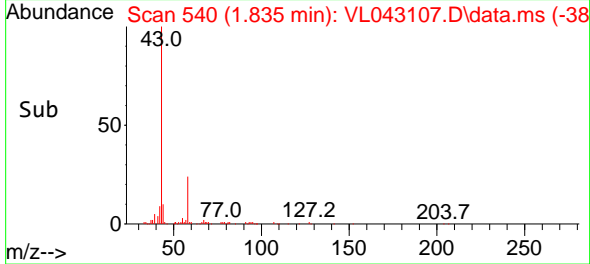


Tgt Ion: 43 Resp: 15572
 Ion Ratio Lower Upper
 43 100
 58 31.0 20.8 31.2

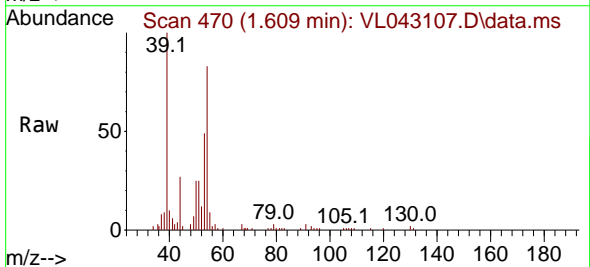
Manual Integrations

APPROVED

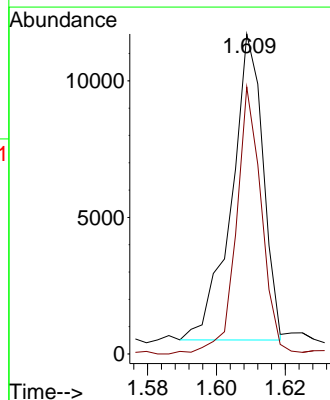
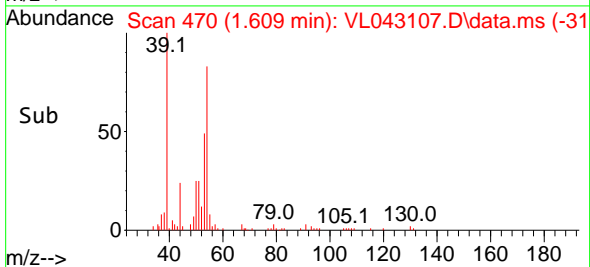
Reviewed By :Semsettin Yesilyurt 10/16/2025
 Supervised By :Mahesh Dadoda 10/16/2025

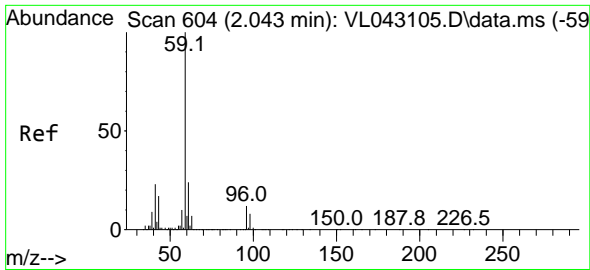


#16
 1,3-Butadiene
 Concen: 1.089 ppbv
 RT: 1.609 min Scan# 470
 Delta R.T. -0.003 min
 Lab File: VL043107.D
 Acq: 14 Oct 2025 12:01



Tgt Ion: 39 Resp: 7157
 Ion Ratio Lower Upper
 39 100
 54 70.8 59.0 88.4





#17
 tert-Butyl alcohol
 Concen: 1.106 ppbv
 RT: 2.043 min Scan# 604
 Delta R.T. -0.000 min
 Lab File: VL043107.D
 Acq: 14 Oct 2025 12:01

Instrument :

MSVOA_L

Client Sample Id :

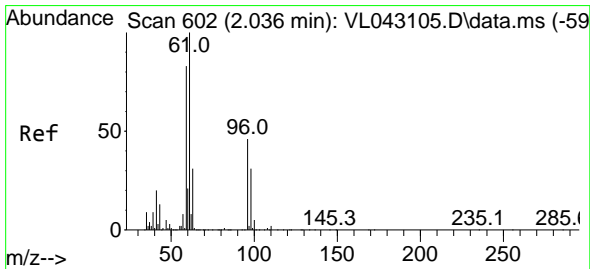
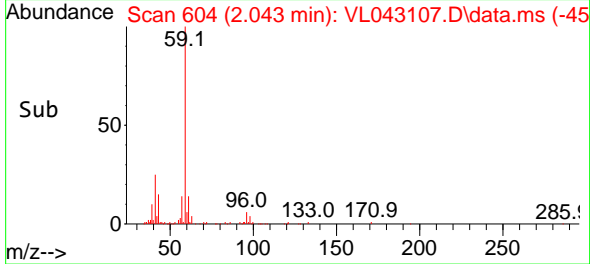
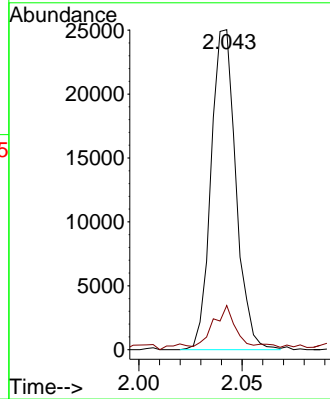
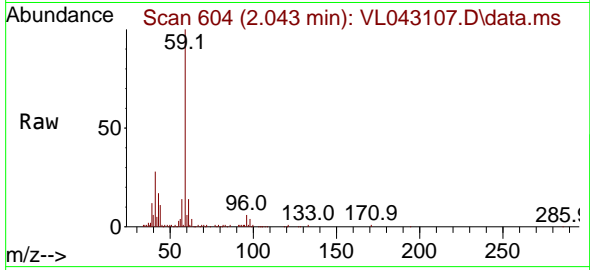
VSTDIC001

Tgt Ion: 59 Resp: 2094
 Ion Ratio Lower Upper
 59 100
 57 14.0 8.2 12.4

Manual Integrations

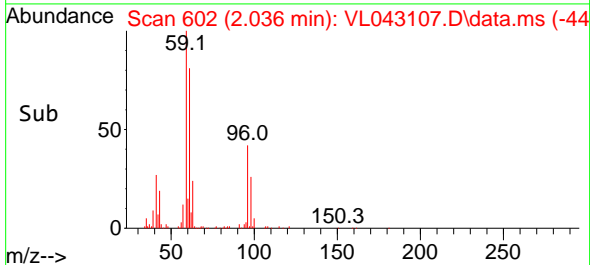
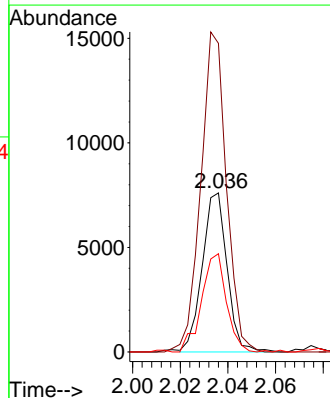
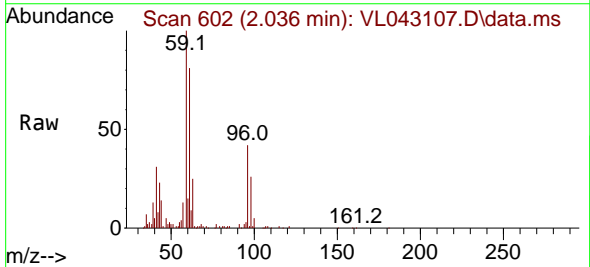
APPROVED

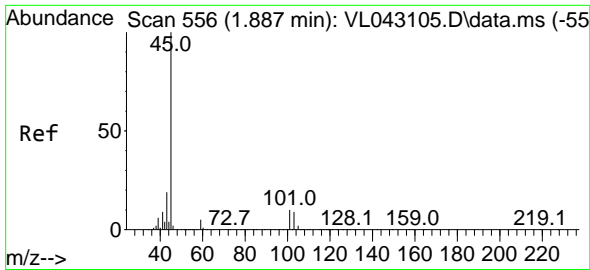
Reviewed By :Semsettin Yesilyurt 10/16/2025
 Supervised By :Mahesh Dadoda 10/16/2025



#18
 1,1-Dichloroethene
 Concen: 1.103 ppbv
 RT: 2.036 min Scan# 602
 Delta R.T. -0.000 min
 Lab File: VL043107.D
 Acq: 14 Oct 2025 12:01

Tgt Ion: 96 Resp: 5510
 Ion Ratio Lower Upper
 96 100
 61 194.0 173.4 260.0
 98 61.7 53.2 79.8





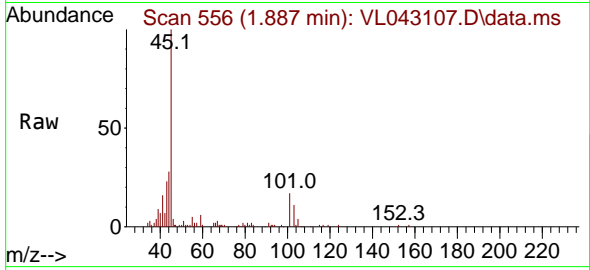
#19
 Isopropyl Alcohol
 Concen: 1.141 ppbv
 RT: 1.887 min Scan# 511
 Delta R.T. -0.000 min
 Lab File: VL043107.D
 Acq: 14 Oct 2025 12:01

Instrument :

MSVOA_L

ClientSampleId :

VSTDIC001

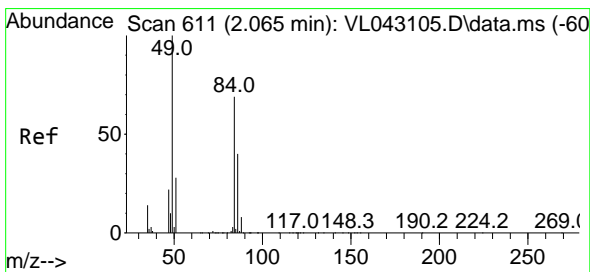
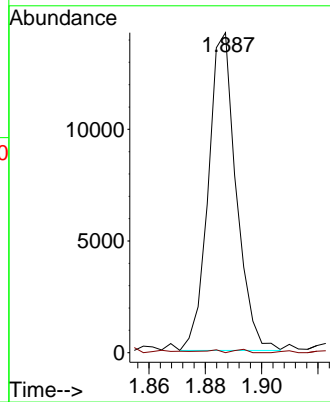
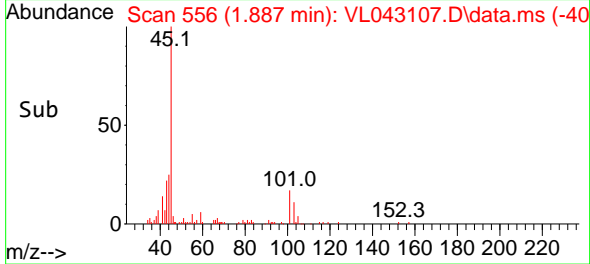


Tgt Ion: 45 Resp: 9790
 Ion Ratio Lower Upper
 45 100
 58 48.1 31.3 46.9

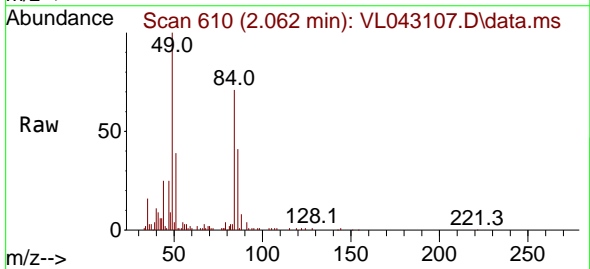
Manual Integrations

APPROVED

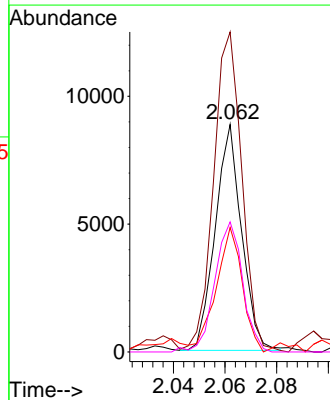
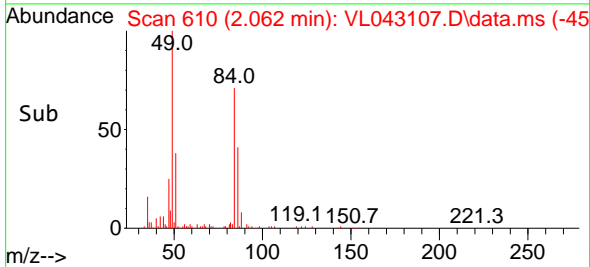
Reviewed By :Semsettin Yesilyurt 10/16/2025
 Supervised By :Mahesh Dadoda 10/16/2025

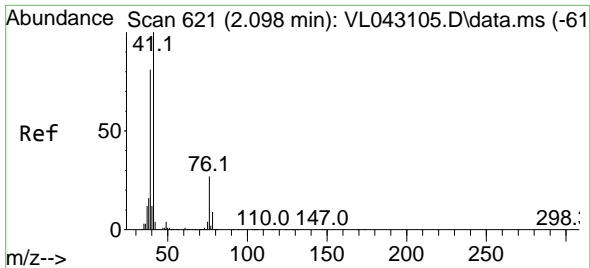


#20
 Methylene Chloride
 Concen: 1.149 ppbv
 RT: 2.062 min Scan# 610
 Delta R.T. -0.003 min
 Lab File: VL043107.D
 Acq: 14 Oct 2025 12:01



Tgt Ion: 84 Resp: 6261
 Ion Ratio Lower Upper
 84 100
 49 140.9 116.6 175.0
 51 51.2 34.8 52.2
 86 57.6 46.2 69.4





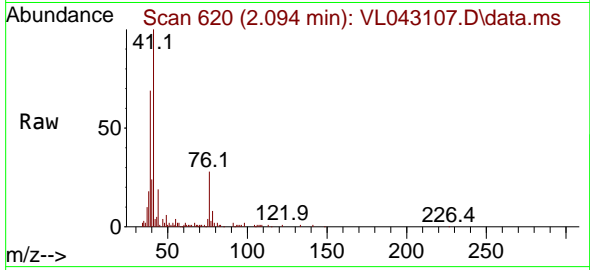
#21
 Allyl Chloride
 Concen: 1.055 ppbv
 RT: 2.094 min Scan# 610
 Delta R.T. -0.003 min
 Lab File: VL043107.D
 Acq: 14 Oct 2025 12:01

Instrument :

MSVOA_L

ClientSampleId :

VSTDIC001



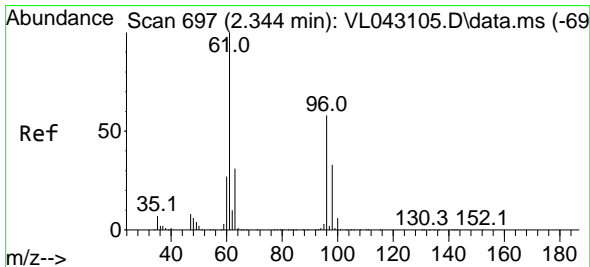
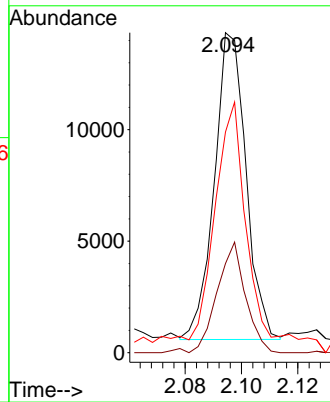
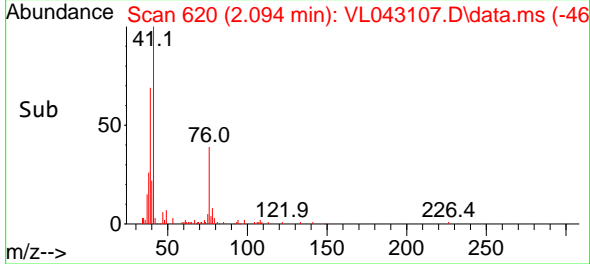
Tgt Ion: 41 Resp: 1073

Ion	Ratio	Lower	Upper
41	100		
76	32.6	21.5	32.3
39	94.1	60.8	91.2

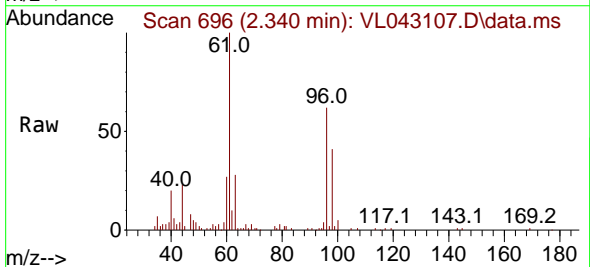
Manual Integrations

APPROVED

Reviewed By :Semsettin Yesilyurt 10/16/2025
 Supervised By :Mahesh Dadoda 10/16/2025

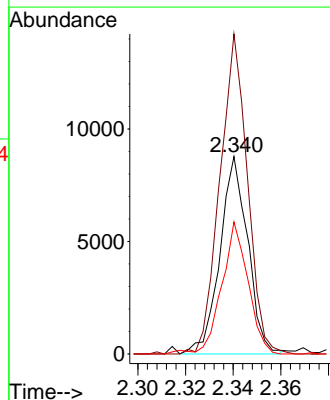
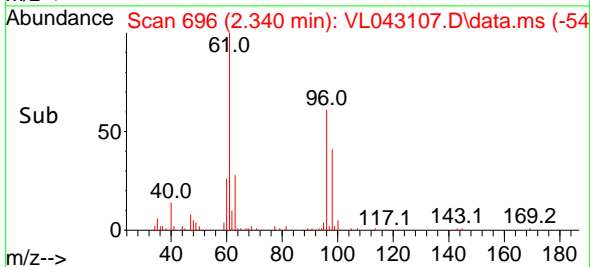


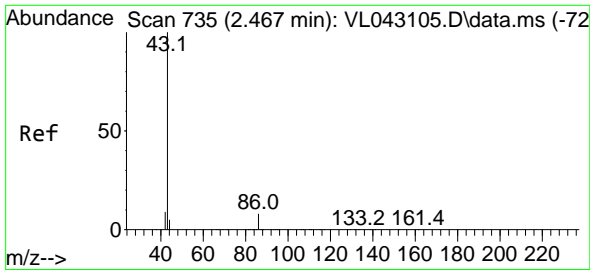
#22
 trans-1,2-Dichloroethene
 Concen: 1.193 ppbv
 RT: 2.340 min Scan# 696
 Delta R.T. -0.003 min
 Lab File: VL043107.D
 Acq: 14 Oct 2025 12:01



Tgt Ion: 96 Resp: 7119

Ion	Ratio	Lower	Upper
96	100		
61	162.1	137.0	205.6
98	66.9	45.5	68.3





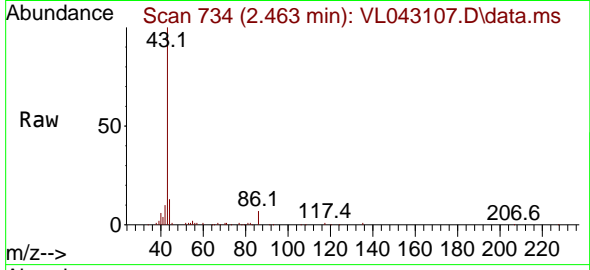
#23
 Vinyl Acetate
 Concen: 0.964 ppbv
 RT: 2.463 min Scan# 716
 Delta R.T. -0.003 min
 Lab File: VL043107.D
 Acq: 14 Oct 2025 12:01

Instrument :

MSVOA_L

ClientSampleId :

VSTDIC001



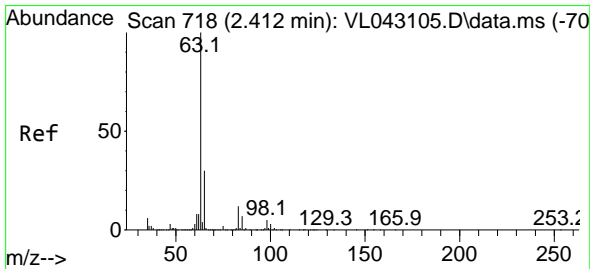
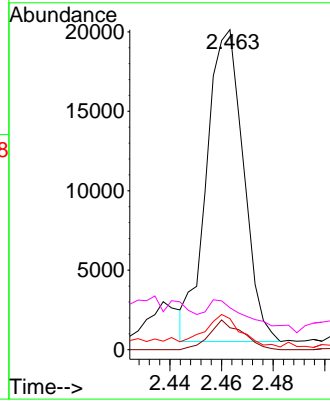
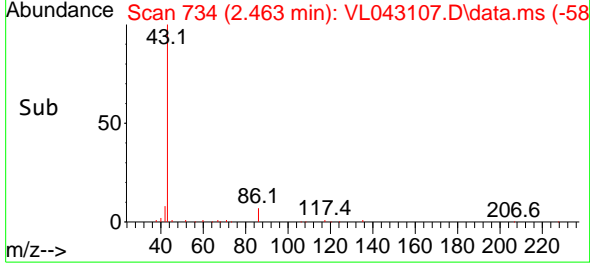
Tgt Ion: 43 Resp: 1947

Ion	Ratio	Lower	Upper
43	100		
86	7.0	6.2	9.2
42	9.1	7.6	11.4
44	5.7	4.2	6.4

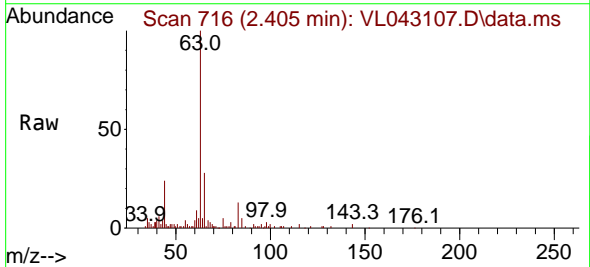
Manual Integrations

APPROVED

Reviewed By :Semsettin Yesilyurt 10/16/2025
 Supervised By :Mahesh Dadoda 10/16/2025

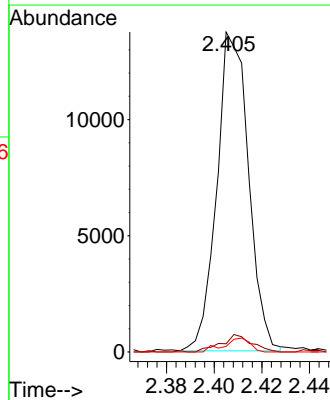
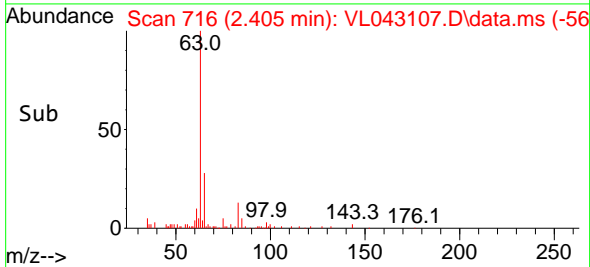


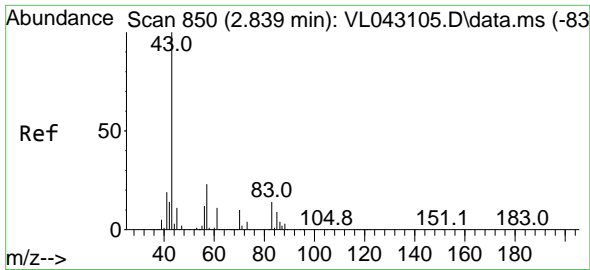
#24
 1,1-Dichloroethane
 Concen: 1.097 ppbv
 RT: 2.405 min Scan# 716
 Delta R.T. -0.007 min
 Lab File: VL043107.D
 Acq: 14 Oct 2025 12:01



Tgt Ion: 63 Resp: 12656

Ion	Ratio	Lower	Upper
63	100		
98	2.6	2.6	7.8#
100	1.7	1.5	4.4





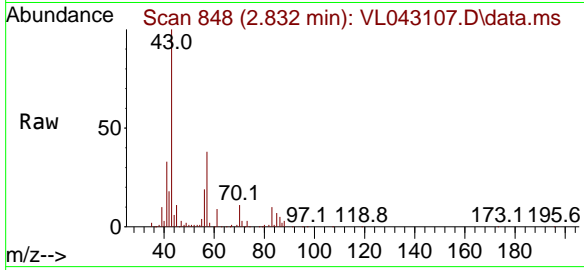
#25
 Ethyl Acetate
 Concen: 1.085 ppbv
 RT: 2.832 min Scan# 846
 Delta R.T. -0.007 min
 Lab File: VL043107.D
 Acq: 14 Oct 2025 12:01

Instrument :

MSVOA_L

ClientSampleId :

VSTDIC001

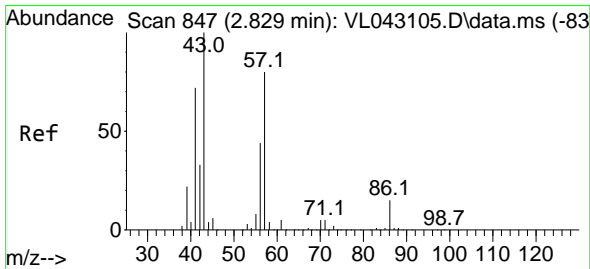
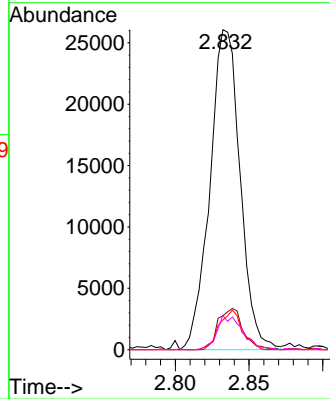
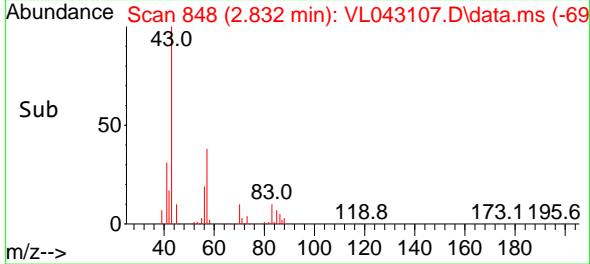


Tgt Ion: 43 Resp: 3709
 Ion Ratio Lower Upper
 43 100
 45 10.8 7.8 11.8
 61 9.4 7.0 10.6
 70 9.2 6.9 10.3

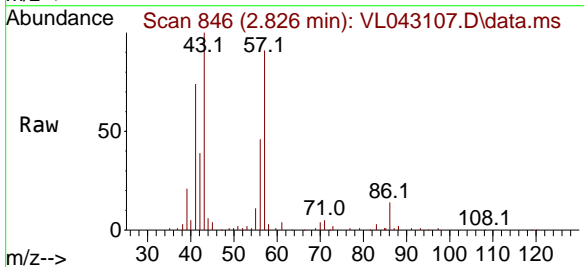
Manual Integrations

APPROVED

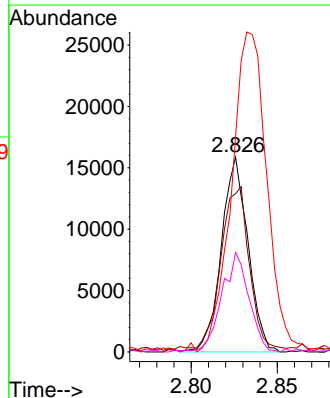
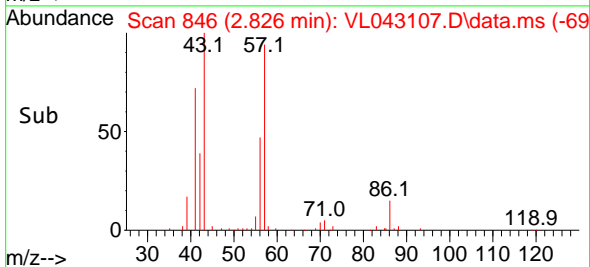
Reviewed By :Semsettin Yesilyurt 10/16/2025
 Supervised By :Mahesh Dadoda 10/16/2025

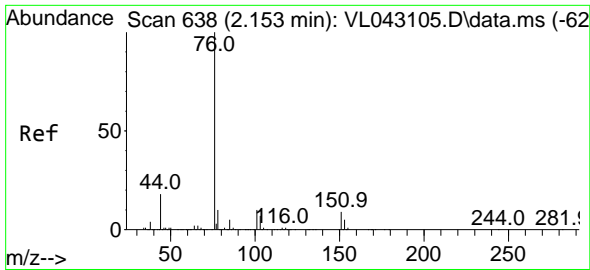


#26
 Hexane
 Concen: 1.089 ppbv
 RT: 2.826 min Scan# 846
 Delta R.T. -0.003 min
 Lab File: VL043107.D
 Acq: 14 Oct 2025 12:01



Tgt Ion: 57 Resp: 17152
 Ion Ratio Lower Upper
 57 100
 41 91.8 71.4 107.0
 43 219.3 178.5 267.7
 56 53.1 42.2 63.4





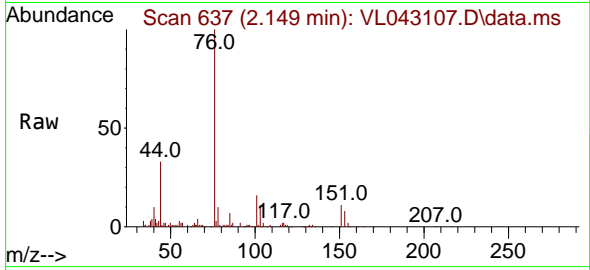
#27
 Carbon Disulfide
 Concen: 1.092 ppbv
 RT: 2.149 min Scan# 61
 Delta R.T. -0.003 min
 Lab File: VL043107.D
 Acq: 14 Oct 2025 12:01

Instrument :

MSVOA_L

ClientSampleId :

VSTDIC001

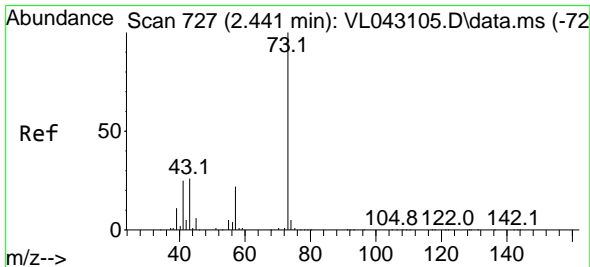
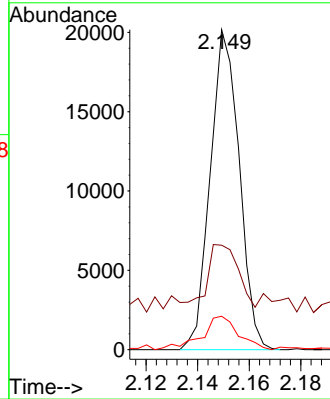
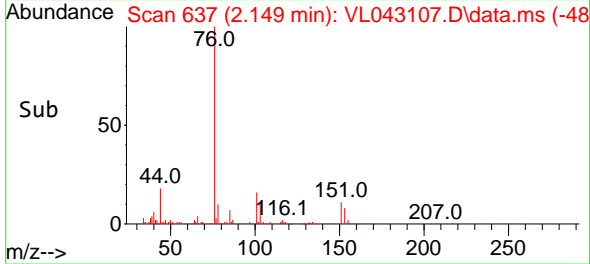


Tgt Ion: 76 Resp: 15760
 Ion Ratio Lower Upper
 76 100
 44 47.9 16.7 25.1
 78 14.2 9.3 13.9

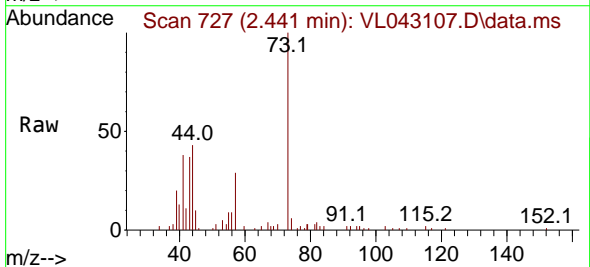
Manual Integrations

APPROVED

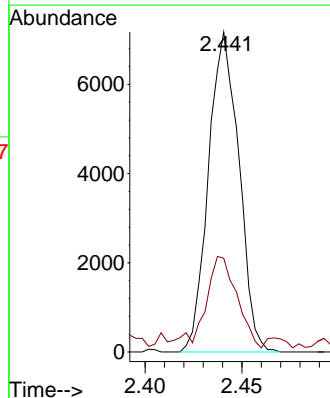
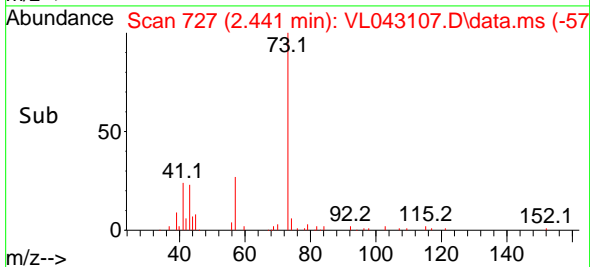
Reviewed By :Semsettin Yesilyurt 10/16/2025
 Supervised By :Mahesh Dadoda 10/16/2025

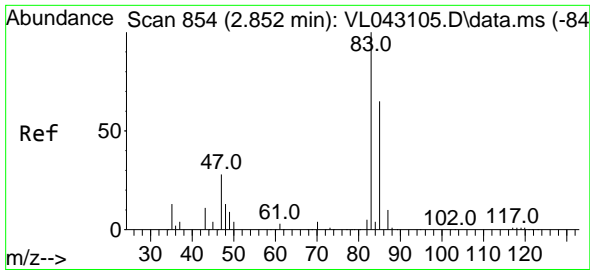


#28
 Methyl tert-Butyl Ether
 Concen: 1.095 ppbv
 RT: 2.441 min Scan# 727
 Delta R.T. -0.000 min
 Lab File: VL043107.D
 Acq: 14 Oct 2025 12:01



Tgt Ion: 73 Resp: 7847
 Ion Ratio Lower Upper
 73 100
 57 32.3 20.5 30.7





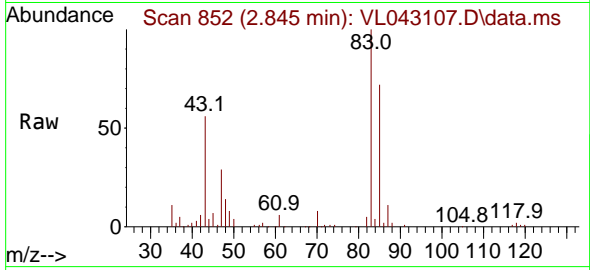
#29
 Chloroform
 Concen: 1.074 ppbv
 RT: 2.845 min Scan# 81
 Delta R.T. -0.007 min
 Lab File: VL043107.D
 Acq: 14 Oct 2025 12:01

Instrument :

MSVOA_L

Client Sample Id :

VSTDICC001

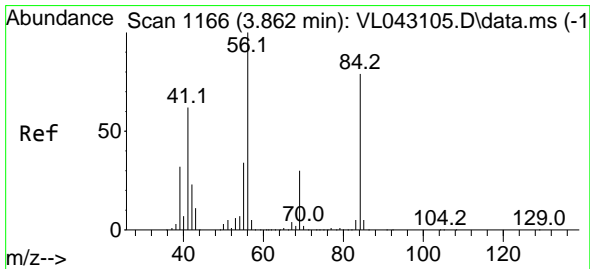
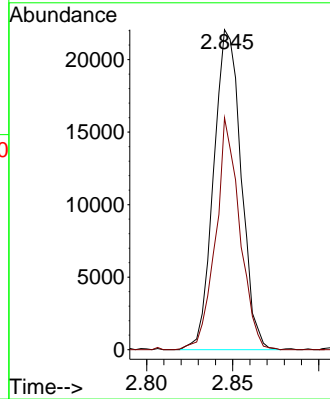
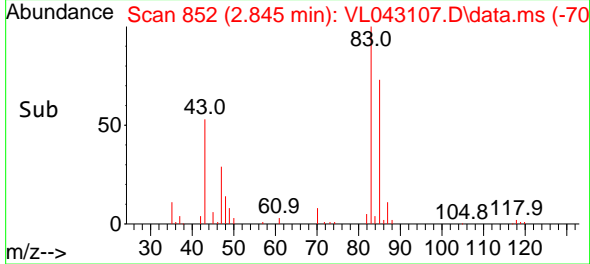


Tgt Ion: 83 Resp: 2452
 Ion Ratio Lower Upper
 83 100
 85 72.4 51.8 77.6

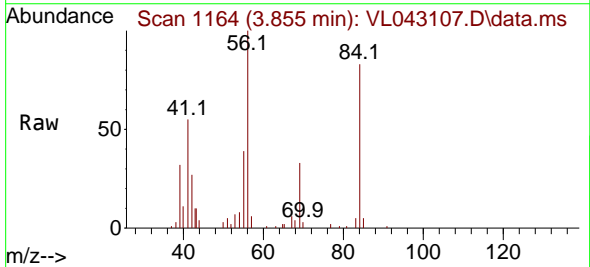
Manual Integrations

APPROVED

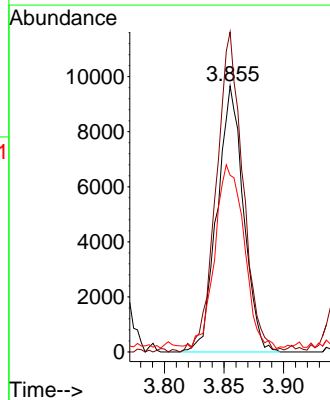
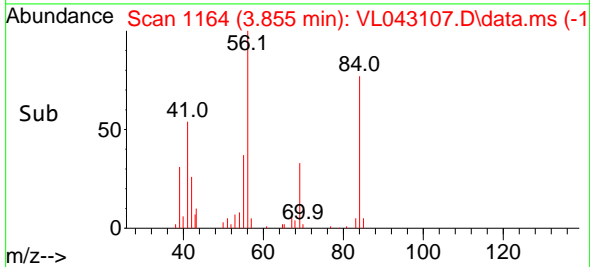
Reviewed By :Semsettin Yesilyurt 10/16/2025
 Supervised By :Mahesh Dadoda 10/16/2025

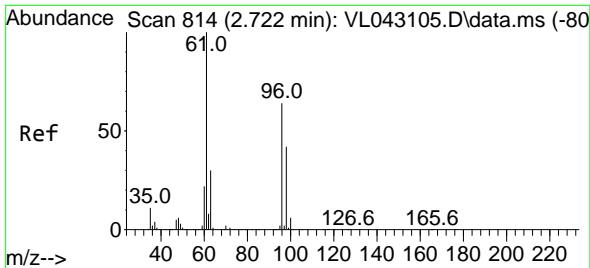


#30
 Cyclohexane
 Concen: 1.078 ppbv
 RT: 3.855 min Scan# 1164
 Delta R.T. -0.007 min
 Lab File: VL043107.D
 Acq: 14 Oct 2025 12:01



Tgt Ion: 84 Resp: 14819
 Ion Ratio Lower Upper
 84 100
 56 122.3 100.9 151.3
 41 78.1 63.8 95.6





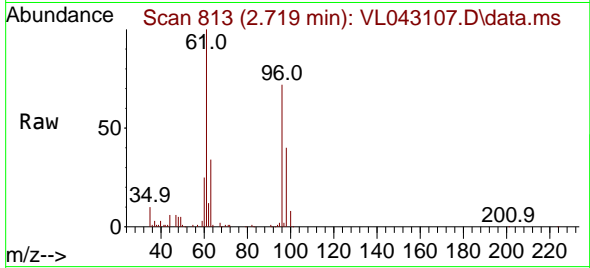
#31
 cis-1,2-Dichloroethene
 Concen: 1.084 ppbv
 RT: 2.719 min Scan# 813
 Delta R.T. -0.003 min
 Lab File: VL043107.D
 Acq: 14 Oct 2025 12:01

Instrument :

MSVOA_L

ClientSampleId :

VSTDIC001

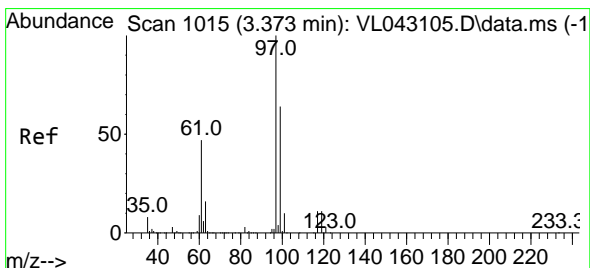
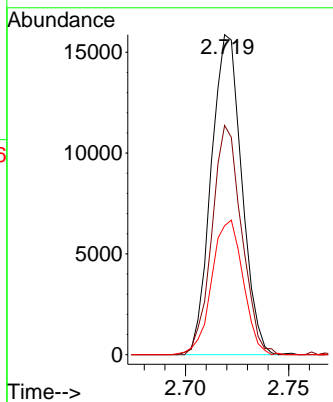
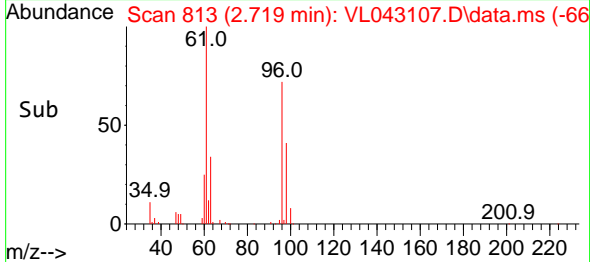


Tgt Ion: 61 Resp: 1631
 Ion Ratio Lower Upper
 61 100
 96 71.6 51.0 76.6
 98 39.9 33.5 50.3

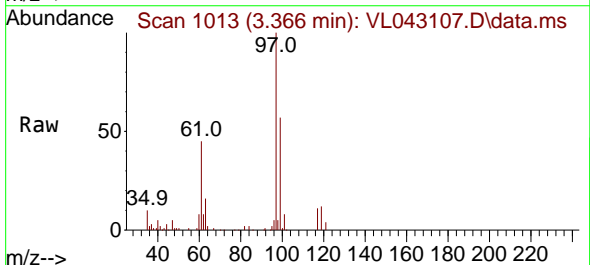
Manual Integrations

APPROVED

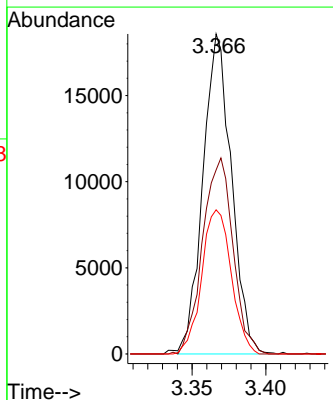
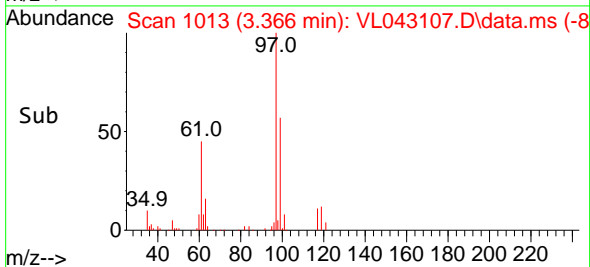
Reviewed By :Semsettin Yesilyurt 10/16/2025
 Supervised By :Mahesh Dadoda 10/16/2025

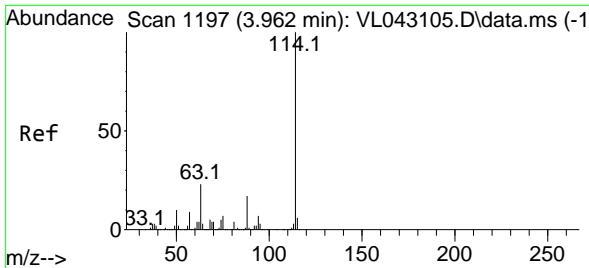


#32
 1,1,1-Trichloroethane
 Concen: 1.049 ppbv
 RT: 3.366 min Scan# 1013
 Delta R.T. -0.007 min
 Lab File: VL043107.D
 Acq: 14 Oct 2025 12:01



Tgt Ion: 97 Resp: 24948
 Ion Ratio Lower Upper
 97 100
 99 65.4 51.3 76.9
 61 46.8 38.4 57.6





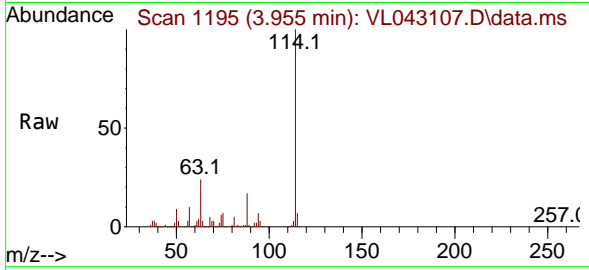
#33
 1,4-Difluorobenzene
 Concen: 10.000 ppbv
 RT: 3.955 min Scan# 1195
 Delta R.T. -0.007 min
 Lab File: VL043107.D
 Acq: 14 Oct 2025 12:01

Instrument :

MSVOA_L

ClientSampleId :

VSTDICC001

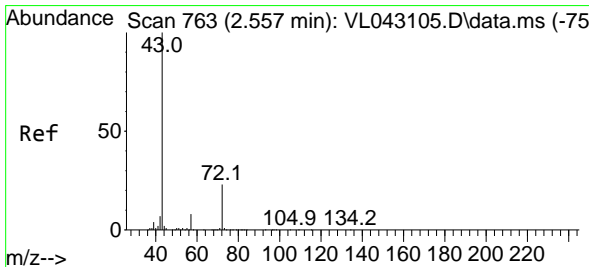
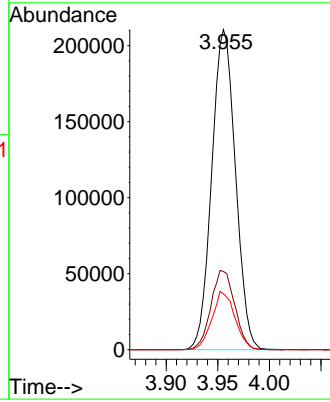
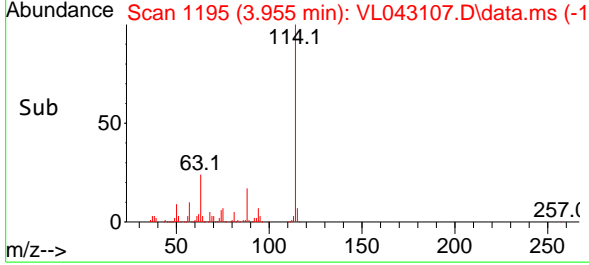


Tgt Ion:114 Resp: 336268
 Ion Ratio Lower Upper
 114 100
 63 24.8 19.3 28.9
 88 17.6 13.9 20.9

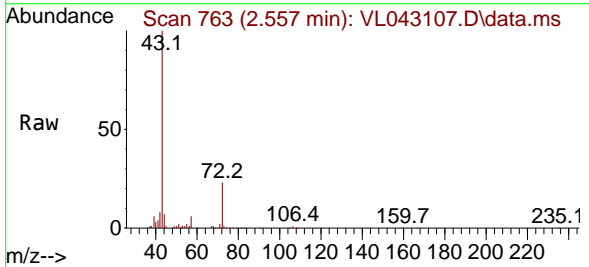
Manual Integrations

APPROVED

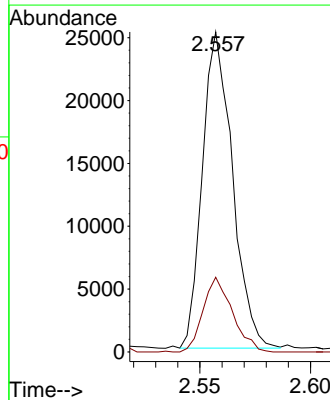
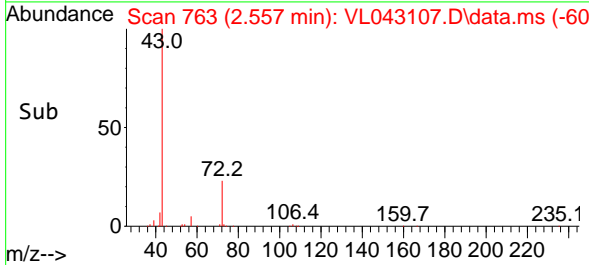
Reviewed By :Semsettin Yesilyurt 10/16/2025
 Supervised By :Mahesh Dadoda 10/16/2025

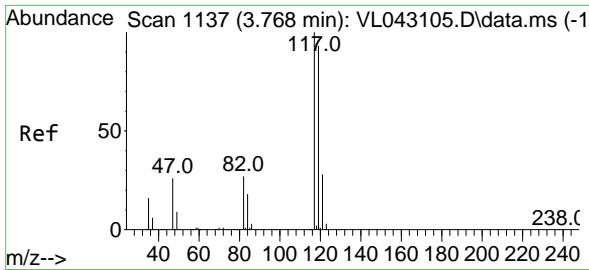


#34
 2-Butanone
 Concen: 1.047 ppbv
 RT: 2.557 min Scan# 763
 Delta R.T. -0.000 min
 Lab File: VL043107.D
 Acq: 14 Oct 2025 12:01



Tgt Ion: 43 Resp: 23811
 Ion Ratio Lower Upper
 43 100
 72 23.0 18.4 27.6





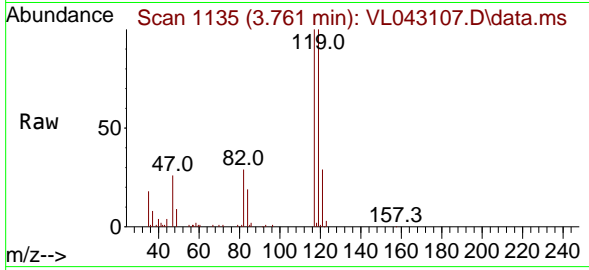
#35
 Carbon Tetrachloride
 Concen: 1.033 ppbv
 RT: 3.761 min Scan# 1135
 Delta R.T. -0.007 min
 Lab File: VL043107.D
 Acq: 14 Oct 2025 12:01

Instrument :

MSVOA_L

ClientSampleId :

VSTDIC001

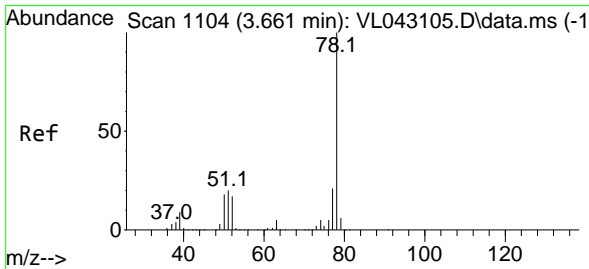
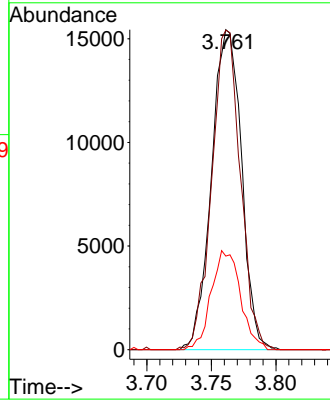
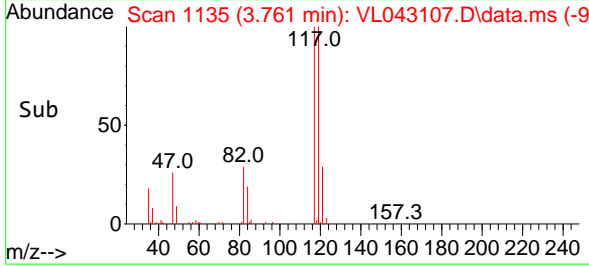


Tgt Ion: 117 Resp: 2496
 Ion Ratio Lower Upper
 117 100
 119 99.8 74.1 111.1
 121 29.3 22.2 33.2

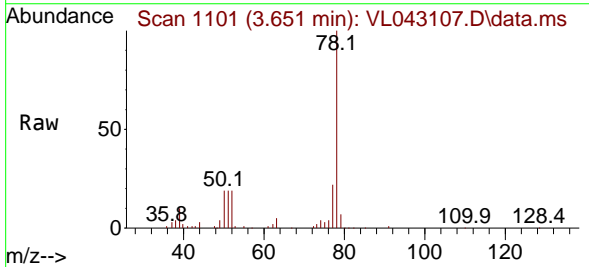
Manual Integrations

APPROVED

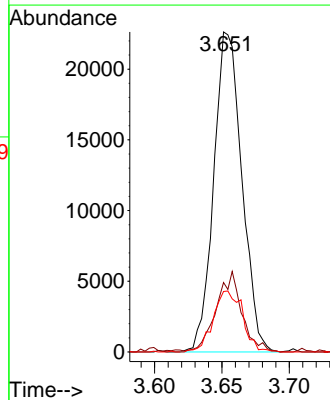
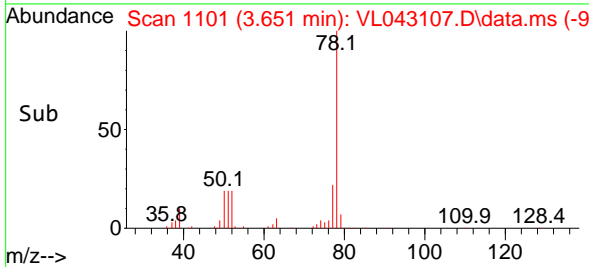
Reviewed By :Semsettin Yesilyurt 10/16/2025
 Supervised By :Mahesh Dadoda 10/16/2025

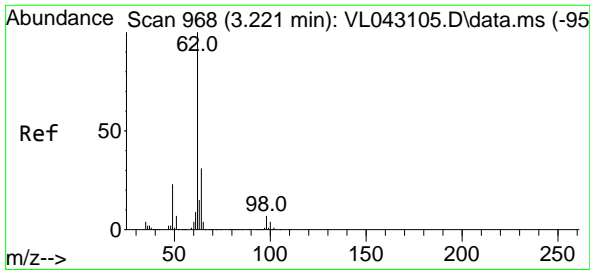


#36
 Benzene
 Concen: 1.040 ppbv
 RT: 3.651 min Scan# 1101
 Delta R.T. -0.010 min
 Lab File: VL043107.D
 Acq: 14 Oct 2025 12:01



Tgt Ion: 78 Resp: 32940
 Ion Ratio Lower Upper
 78 100
 77 21.7 17.0 25.6
 50 18.9 14.6 22.0





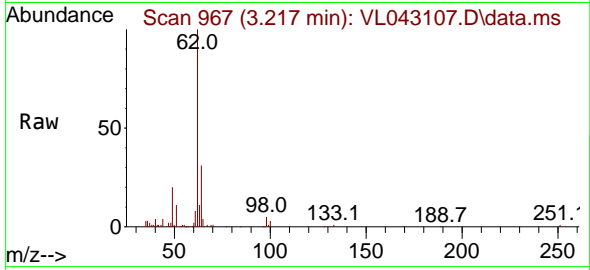
#37
 1,2-Dichloroethane
 Concen: 1.053 ppbv
 RT: 3.217 min Scan# 90
 Delta R.T. -0.003 min
 Lab File: VL043107.D
 Acq: 14 Oct 2025 12:01

Instrument :

MSVOA_L

ClientSampleId :

VSTDIC001

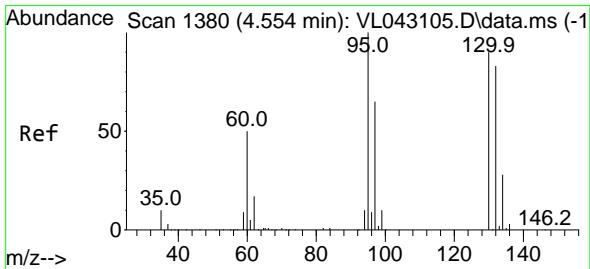
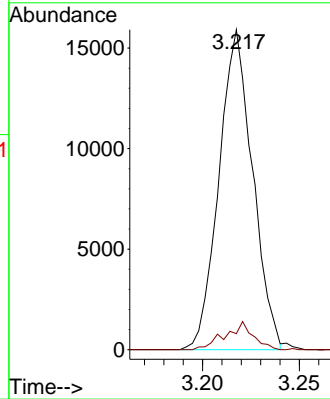
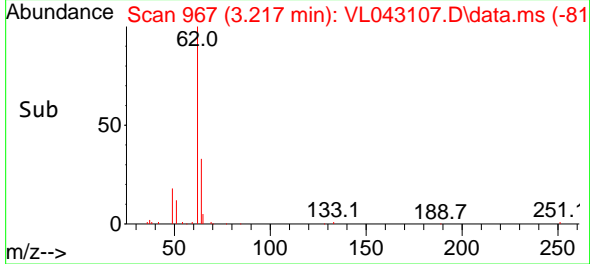


Tgt Ion: 62 Resp: 1921
 Ion Ratio Lower Upper
 62 100
 98 7.2 5.8 8.6

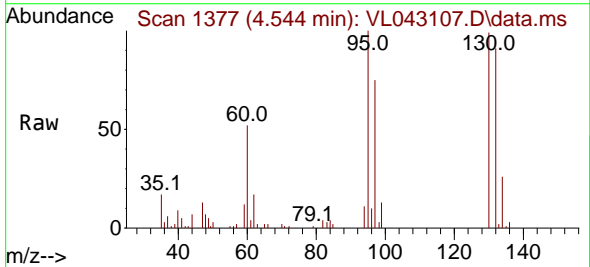
Manual Integrations

APPROVED

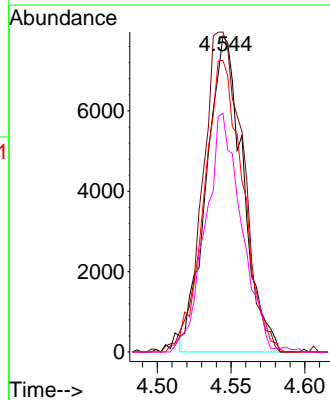
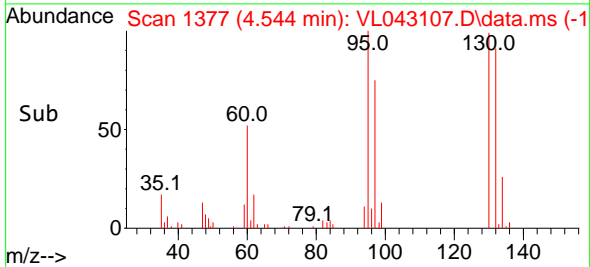
Reviewed By :Semsettin Yesilyurt 10/16/2025
 Supervised By :Mahesh Dadoda 10/16/2025

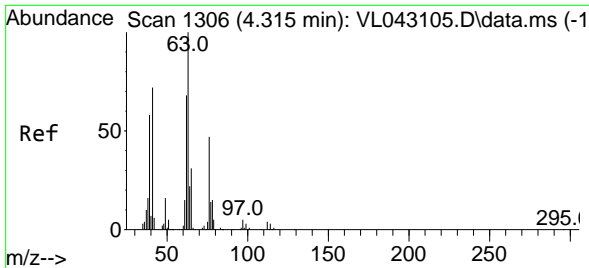


#38
 Trichloroethene
 Concen: 1.023 ppbv
 RT: 4.544 min Scan# 1377
 Delta R.T. -0.010 min
 Lab File: VL043107.D
 Acq: 14 Oct 2025 12:01



Tgt Ion:130 Resp: 13512
 Ion Ratio Lower Upper
 130 100
 95 101.4 88.6 133.0
 132 91.5 73.4 110.0
 97 74.4 57.8 86.6





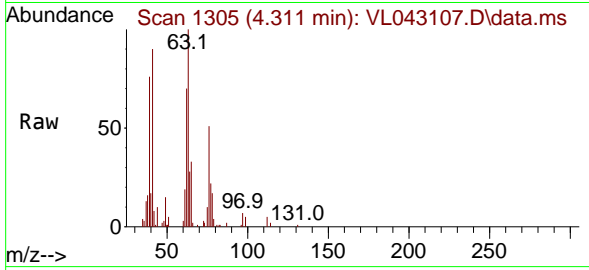
#39
 1,2-Dichloropropane
 Concen: 1.073 ppbv
 RT: 4.311 min Scan# 1305
 Delta R.T. -0.003 min
 Lab File: VL043107.D
 Acq: 14 Oct 2025 12:01

Instrument :

MSVOA_L

ClientSampleId :

VSTDIC001



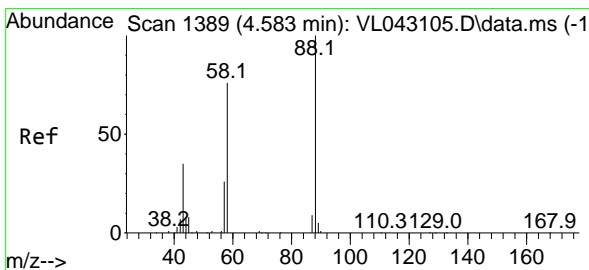
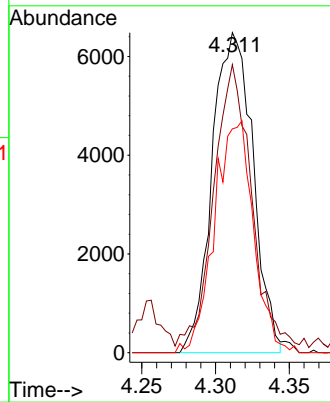
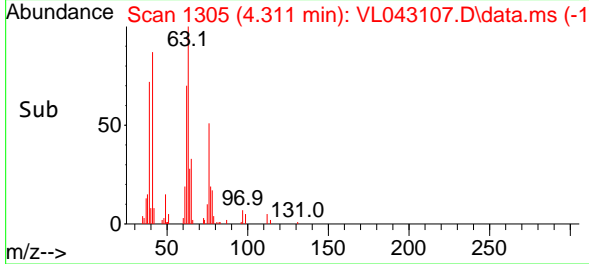
Tgt Ion: 63 Resp: 1243

Ion	Ratio	Lower	Upper
63	100		
41	84.3	58.0	87.0
62	67.2	54.7	82.1

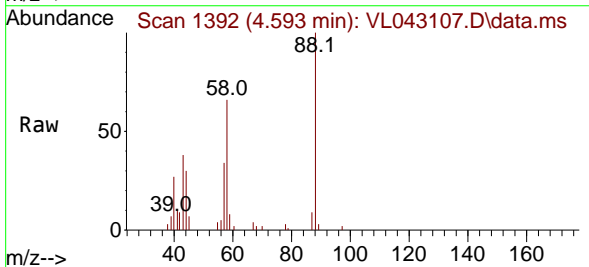
Manual Integrations

APPROVED

Reviewed By :Semsettin Yesilyurt 10/16/2025
 Supervised By :Mahesh Dadoda 10/16/2025

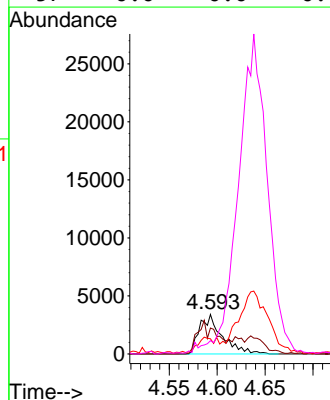
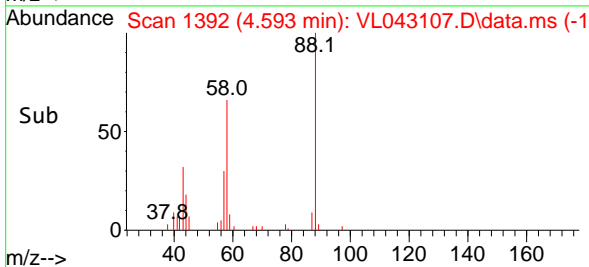


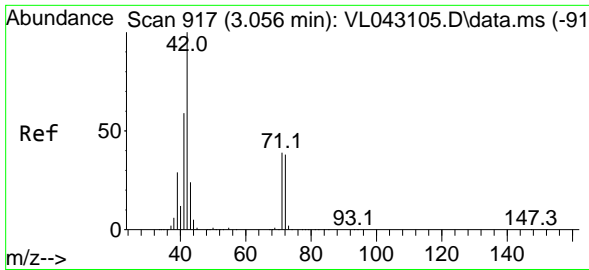
#40
 1,4-Dioxane
 Concen: 1.077 ppbv m
 RT: 4.593 min Scan# 1392
 Delta R.T. 0.009 min
 Lab File: VL043107.D
 Acq: 14 Oct 2025 12:01



Tgt Ion: 88 Resp: 5579

Ion	Ratio	Lower	Upper
88	100		
58	0.0	61.1	91.7#
43	0.0	24.0	36.0#
57	0.0	0.0	0.0





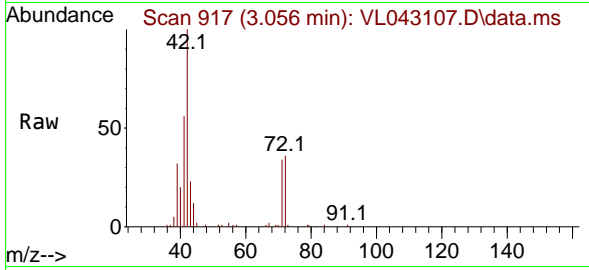
#41
 Tetrahydrofuran
 Concen: 1.044 ppbv
 RT: 3.056 min Scan# 917
 Delta R.T. -0.000 min
 Lab File: VL043107.D
 Acq: 14 Oct 2025 12:01

Instrument :

MSVOA_L

ClientSampleId :

VSTDICC001

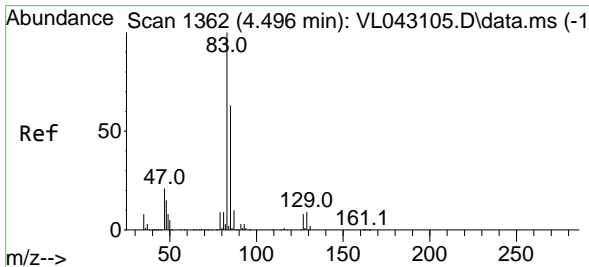
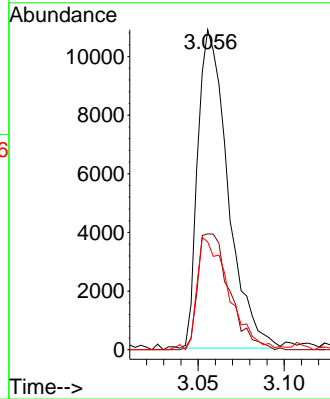
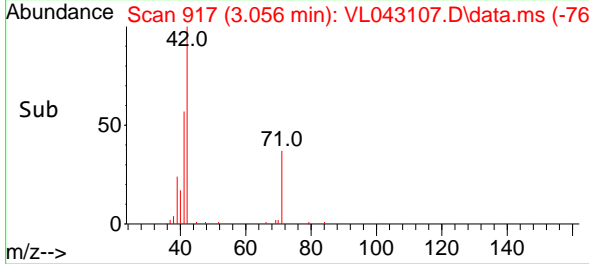


Tgt Ion: 42 Resp: 1325
 Ion Ratio Lower Upper
 42 100
 72 38.1 31.3 46.9
 71 38.6 30.4 45.6

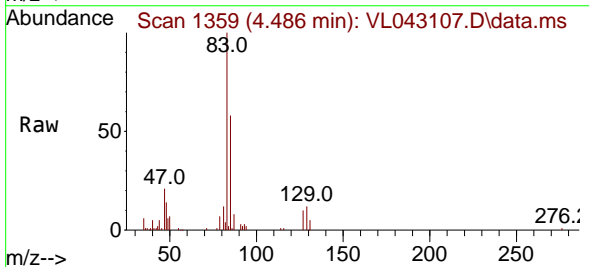
Manual Integrations

APPROVED

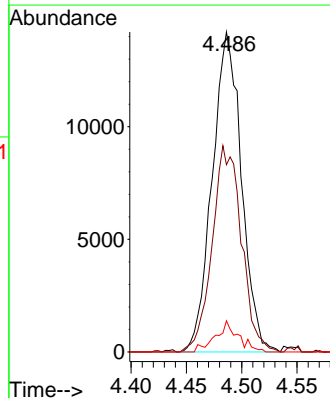
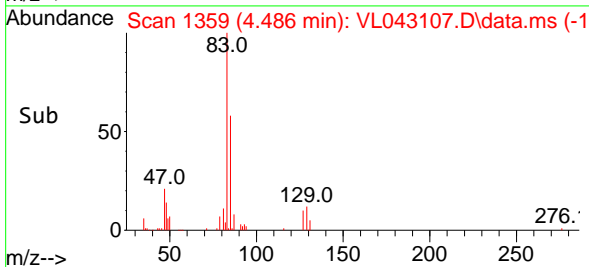
Reviewed By :Semsettin Yesilyurt 10/16/2025
 Supervised By :Mahesh Dadoda 10/16/2025

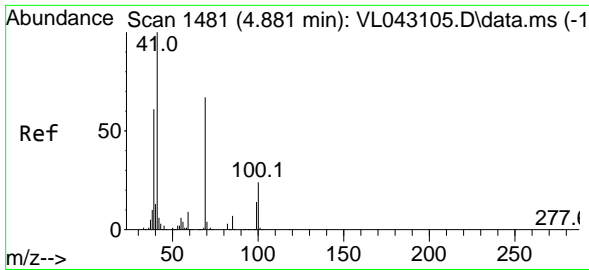


#42
 Bromodichloromethane
 Concen: 1.032 ppbv
 RT: 4.486 min Scan# 1359
 Delta R.T. -0.010 min
 Lab File: VL043107.D
 Acq: 14 Oct 2025 12:01



Tgt Ion: 83 Resp: 26069
 Ion Ratio Lower Upper
 83 100
 85 58.5 50.6 75.8
 127 9.8 6.3 9.5#





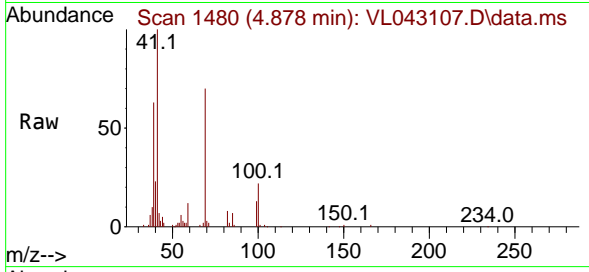
#43
 Methyl Methacrylate
 Concen: 1.064 ppbv
 RT: 4.878 min Scan# 1481
 Delta R.T. -0.003 min
 Lab File: VL043107.D
 Acq: 14 Oct 2025 12:01

Instrument :

MSVOA_L

ClientSampleId :

VSTDIC001

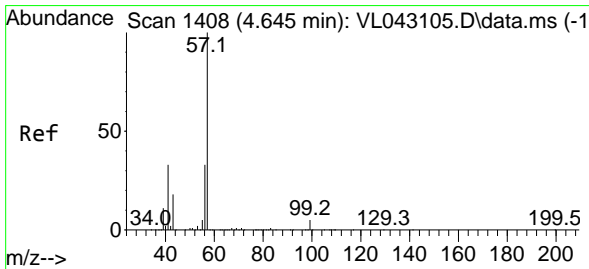
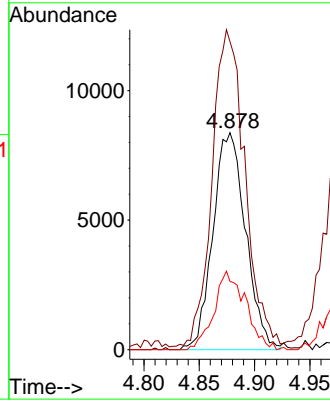
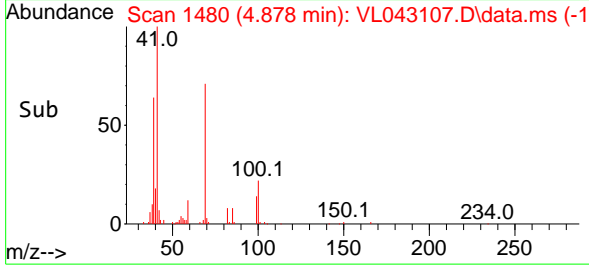


Tgt Ion: 69 Resp: 1719
 Ion Ratio Lower Upper
 69 100
 41 145.9 120.5 180.7
 100 35.0 29.0 43.4

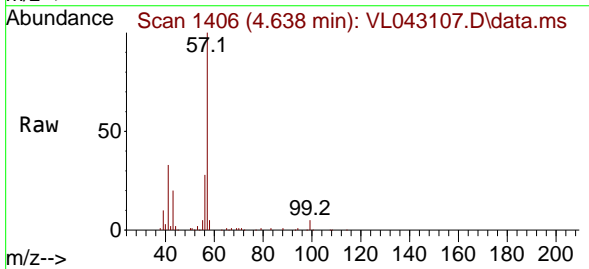
Manual Integrations

APPROVED

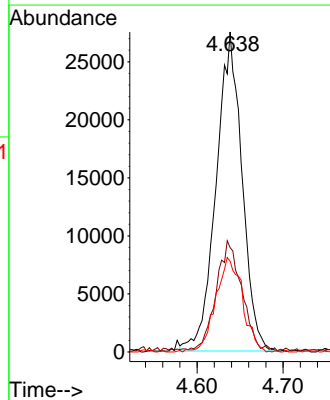
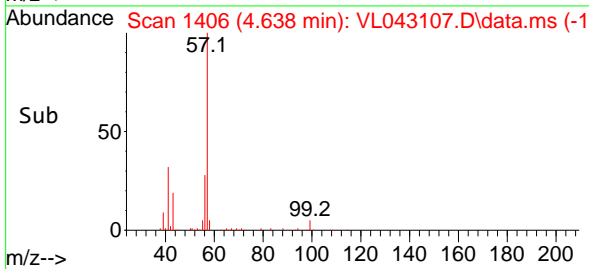
Reviewed By :Semsettin Yesilyurt 10/16/2025
 Supervised By :Mahesh Dadoda 10/16/2025

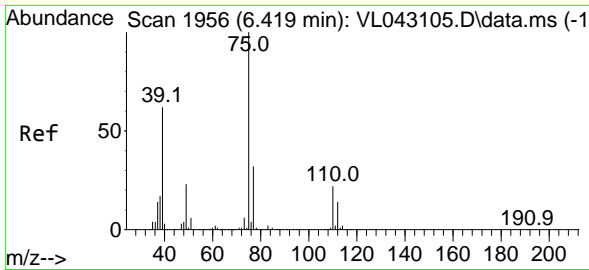


#44
 2,2,4-Trimethylpentane
 Concen: 1.084 ppbv
 RT: 4.638 min Scan# 1406
 Delta R.T. -0.007 min
 Lab File: VL043107.D
 Acq: 14 Oct 2025 12:01



Tgt Ion: 57 Resp: 57382
 Ion Ratio Lower Upper
 57 100
 41 35.4 26.3 39.5
 56 30.7 25.9 38.9





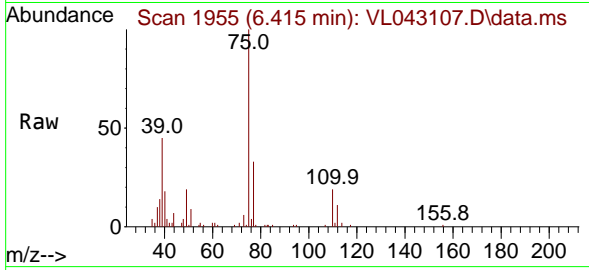
#45
 t-1,3-Dichloropropene
 Concen: 1.045 ppbv m
 RT: 6.415 min Scan# 1956
 Delta R.T. -0.003 min
 Lab File: VL043107.D
 Acq: 14 Oct 2025 12:01

Instrument :

MSVOA_L

ClientSampleId :

VSTDIC001

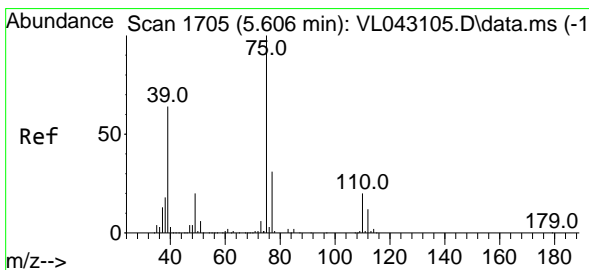
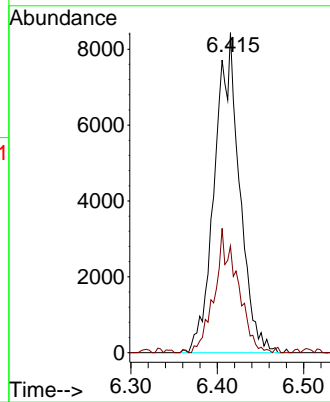
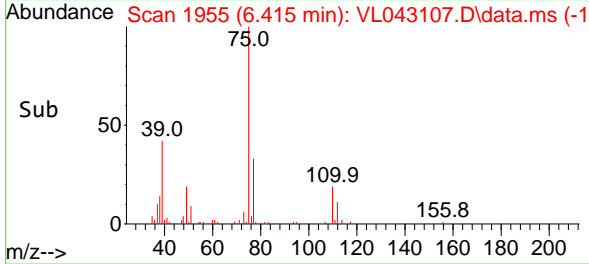


Tgt Ion: 75 Resp: 16874
 Ion Ratio Lower Upper
 75 100
 77 33.4 25.4 38.2

Manual Integrations

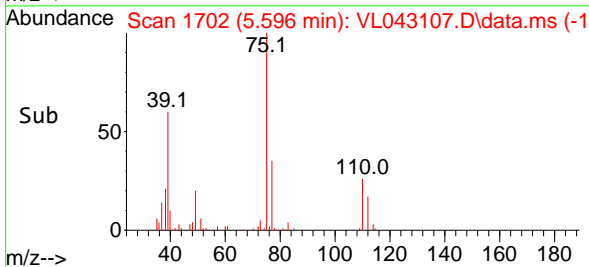
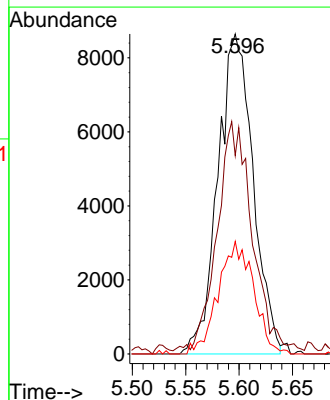
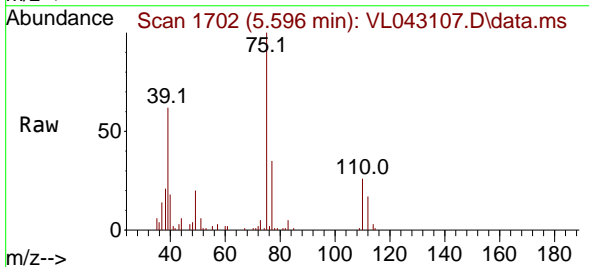
APPROVED

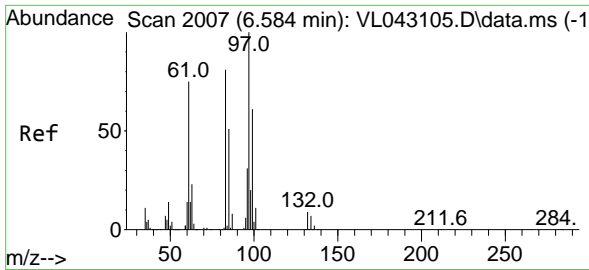
Reviewed By :Semsettin Yesilyurt 10/16/2025
 Supervised By :Mahesh Dadoda 10/16/2025



#46
 cis-1,3-Dichloropropene
 Concen: 1.029 ppbv
 RT: 5.596 min Scan# 1702
 Delta R.T. -0.010 min
 Lab File: VL043107.D
 Acq: 14 Oct 2025 12:01

Tgt Ion: 75 Resp: 19830
 Ion Ratio Lower Upper
 75 100
 39 59.6 51.0 76.6
 77 35.1 25.0 37.4





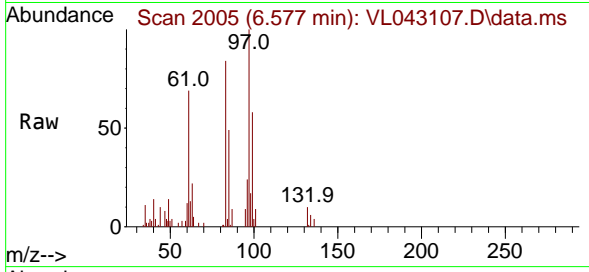
#47
 1,1,2-Trichloroethane
 Concen: 1.030 ppbv
 RT: 6.577 min Scan# 2007
 Delta R.T. -0.007 min
 Lab File: VL043107.D
 Acq: 14 Oct 2025 12:01

Instrument :

MSVOA_L

ClientSampleId :

VSTDIC001



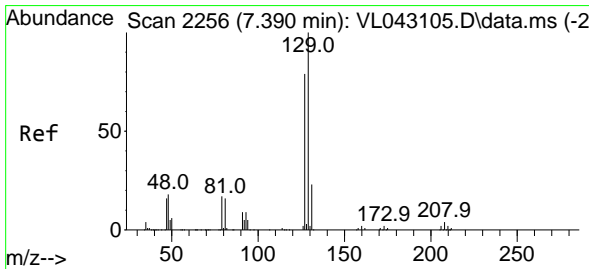
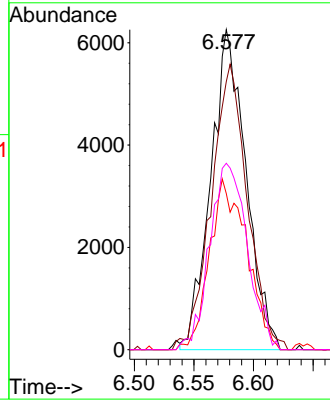
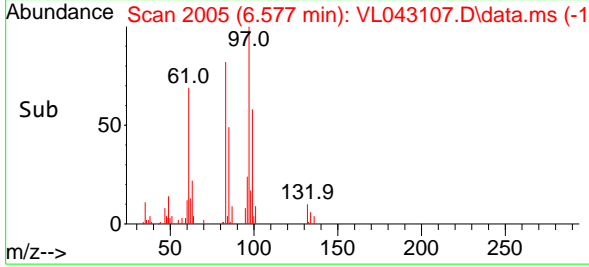
Tgt Ion: 97 Resp: 12870

Ion	Ratio	Lower	Upper
97	100		
83	80.9	64.6	96.8
85	48.8	40.6	60.8
99	58.3	48.4	72.6

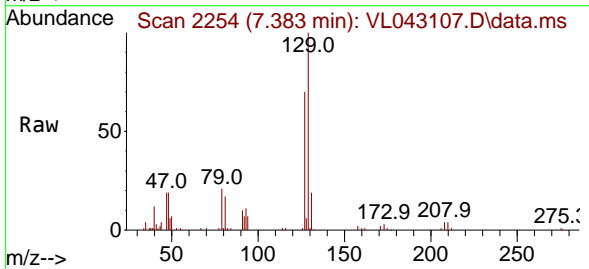
Manual Integrations

APPROVED

Reviewed By :Semsettin Yesilyurt 10/16/2025
 Supervised By :Mahesh Dadoda 10/16/2025

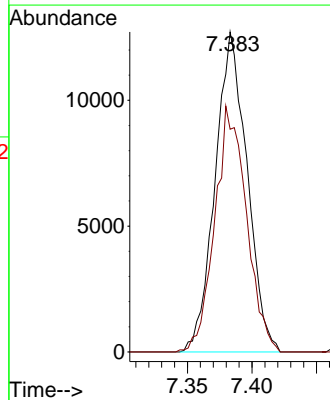
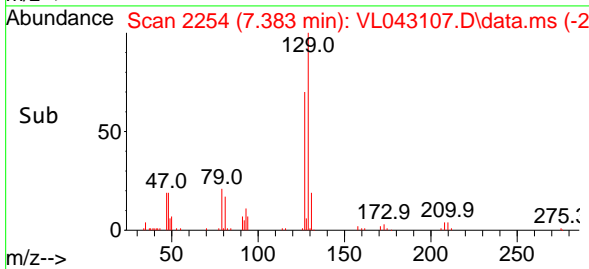


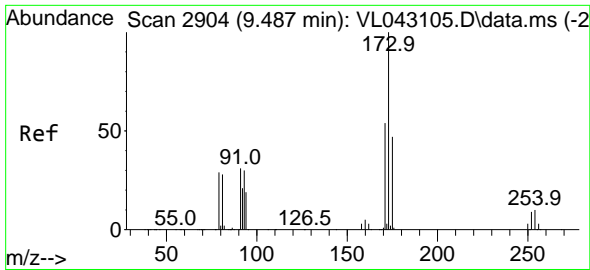
#48
 Dibromochloromethane
 Concen: 1.046 ppbv
 RT: 7.383 min Scan# 2254
 Delta R.T. -0.007 min
 Lab File: VL043107.D
 Acq: 14 Oct 2025 12:01



Tgt Ion:129 Resp: 21874

Ion	Ratio	Lower	Upper
129	100		
127	76.1	39.3	117.9





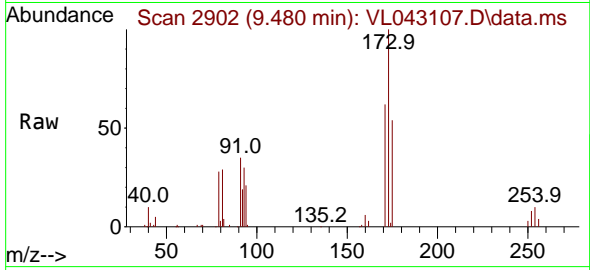
#49
 Bromoform
 Concen: 1.019 ppbv
 RT: 9.480 min Scan# 2904
 Delta R.T. -0.007 min
 Lab File: VL043107.D
 Acq: 14 Oct 2025 12:01

Instrument :

MSVOA_L

ClientSampleId :

VSTDICC001

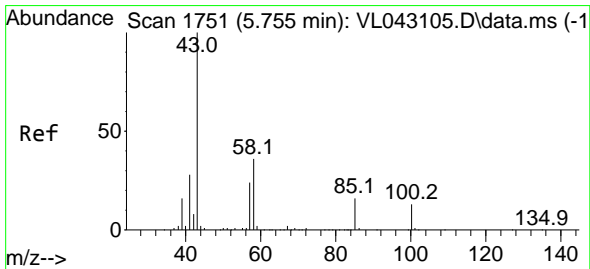
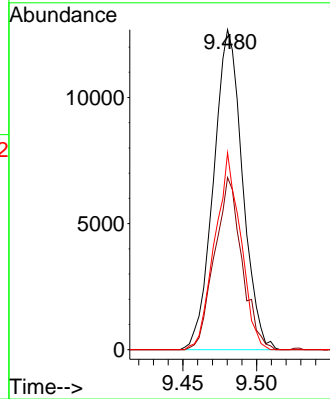
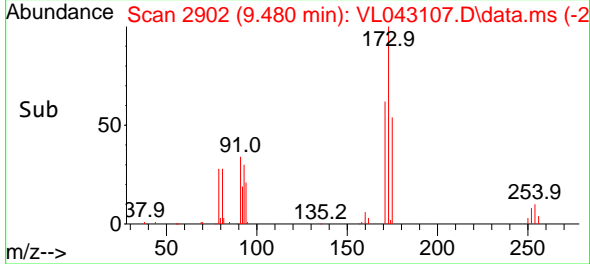


Tgt Ion:173 Resp: 17320
 Ion Ratio Lower Upper
 173 100
 175 50.9 38.8 58.2
 171 55.0 41.7 62.5

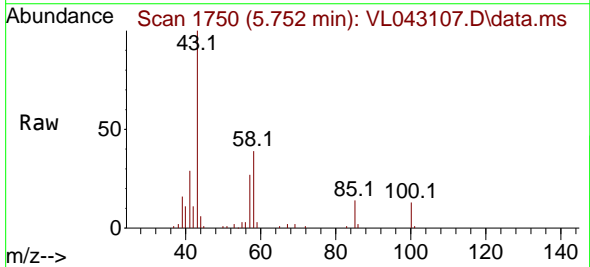
Manual Integrations

APPROVED

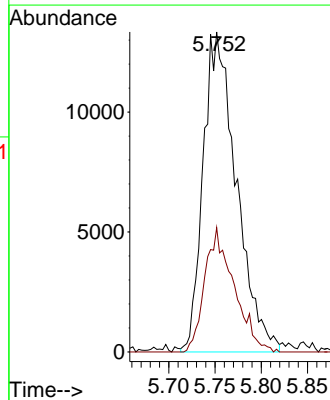
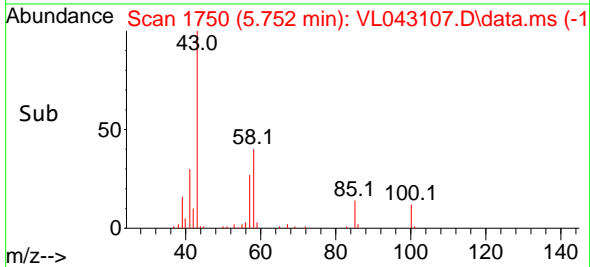
Reviewed By :Semsettin Yesilyurt 10/16/2025
 Supervised By :Mahesh Dadoda 10/16/2025

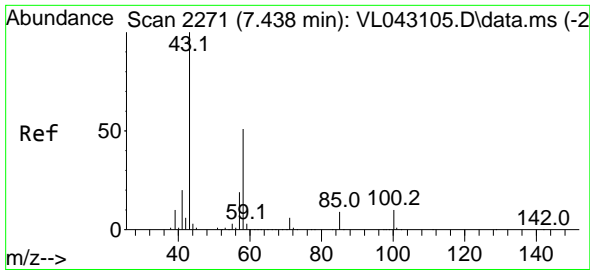


#50
 4-Methyl-2-Pentanone
 Concen: 1.061 ppbv m
 RT: 5.752 min Scan# 1750
 Delta R.T. -0.003 min
 Lab File: VL043107.D
 Acq: 14 Oct 2025 12:01



Tgt Ion: 43 Resp: 33269
 Ion Ratio Lower Upper
 43 100
 58 0.0 29.1 43.7#





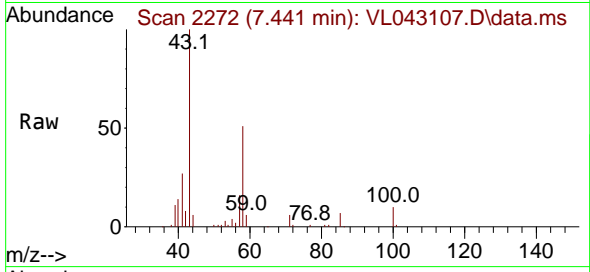
#51
 2-Hexanone
 Concen: 1.018 ppbv
 RT: 7.441 min Scan# 2114
 Delta R.T. 0.003 min
 Lab File: VL043107.D
 Acq: 14 Oct 2025 12:01

Instrument :

MSVOA_L

ClientSampleId :

VSTDIC001

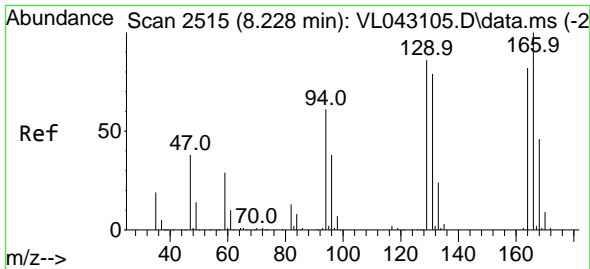
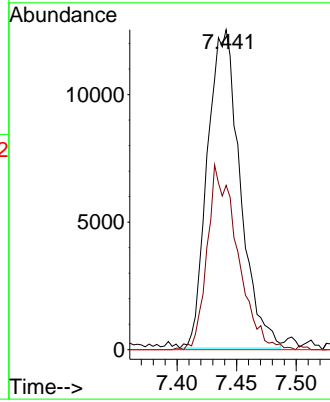
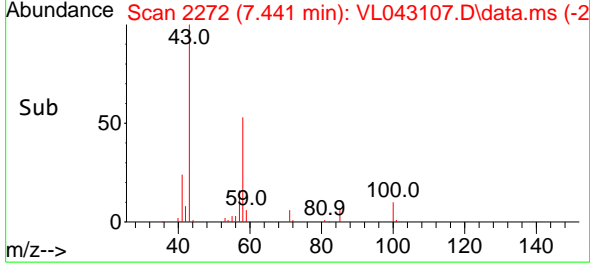


Tgt Ion: 43 Resp: 2381
 Ion Ratio Lower Upper
 43 100
 58 53.7 40.4 60.6
 98 0.0 0.1 0.1

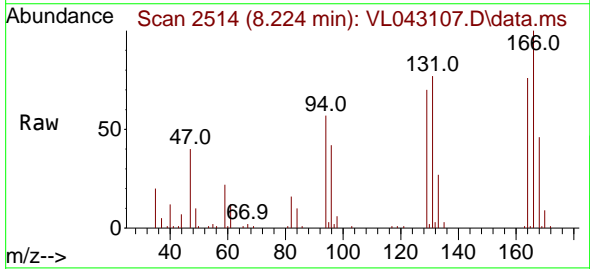
Manual Integrations

APPROVED

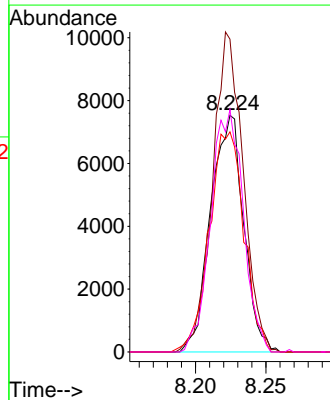
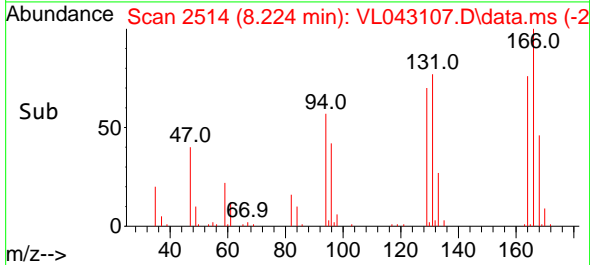
Reviewed By :Semsettin Yesilyurt 10/16/2025
 Supervised By :Mahesh Dadoda 10/16/2025

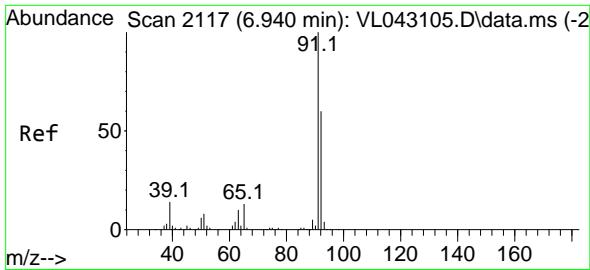


#52
 Tetrachloroethene
 Concen: 1.079 ppbv
 RT: 8.224 min Scan# 2514
 Delta R.T. -0.003 min
 Lab File: VL043107.D
 Acq: 14 Oct 2025 12:01



Tgt Ion:164 Resp: 12319
 Ion Ratio Lower Upper
 164 100
 166 132.1 97.6 146.4
 129 93.0 84.5 126.7
 131 102.4 77.2 115.8





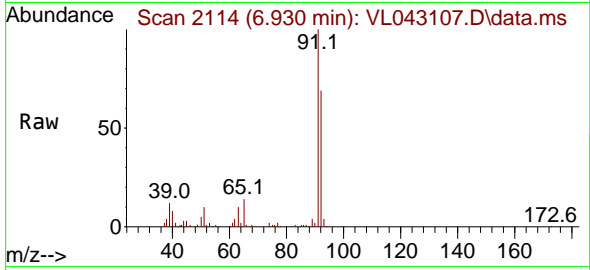
#53
 Toluene
 Concen: 1.040 ppbv
 RT: 6.930 min Scan# 2117
 Delta R.T. -0.010 min
 Lab File: VL043107.D
 Acq: 14 Oct 2025 12:01

Instrument :

MSVOA_L

ClientSampleId :

VSTDICC001

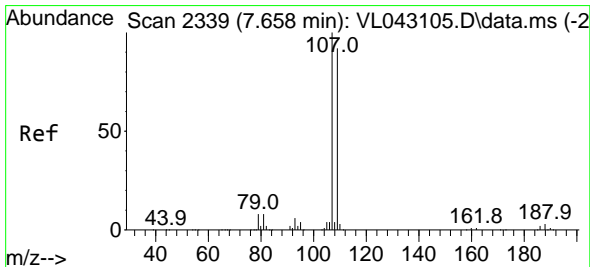
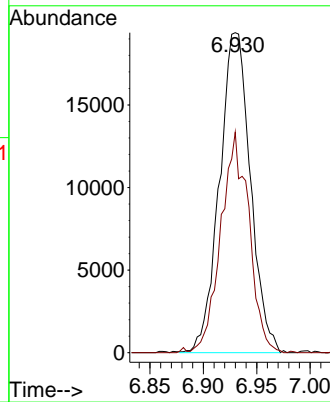
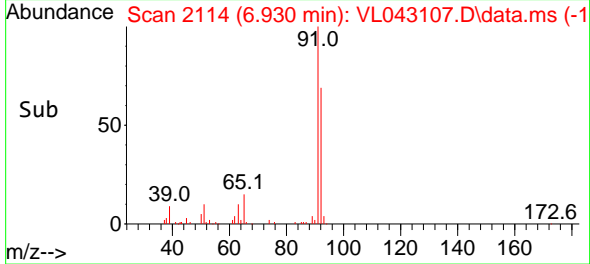


Tgt Ion: 91 Resp: 39079
 Ion Ratio Lower Upper
 91 100
 92 62.8 48.8 73.2

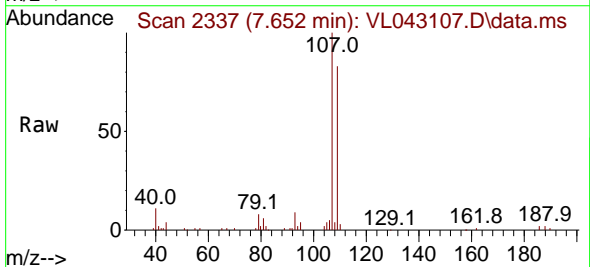
Manual Integrations

APPROVED

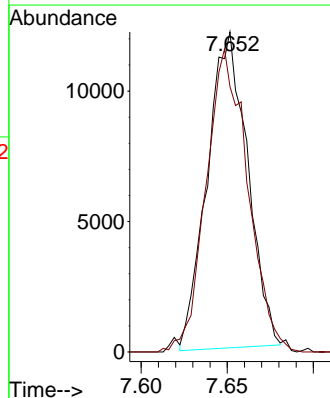
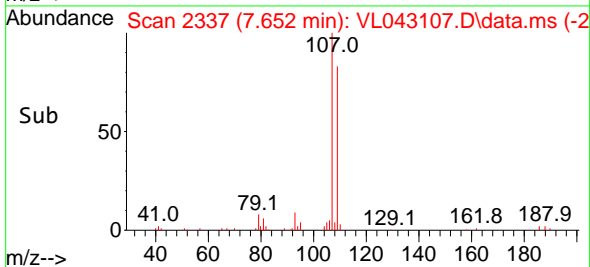
Reviewed By :Semsettin Yesilyurt 10/16/2025
 Supervised By :Mahesh Dadoda 10/16/2025

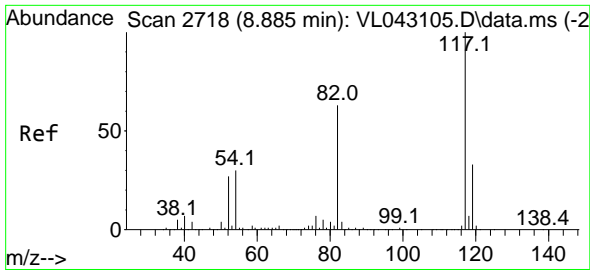


#54
 1,2-Dibromoethane
 Concen: 0.999 ppbv
 RT: 7.652 min Scan# 2337
 Delta R.T. -0.007 min
 Lab File: VL043107.D
 Acq: 14 Oct 2025 12:01



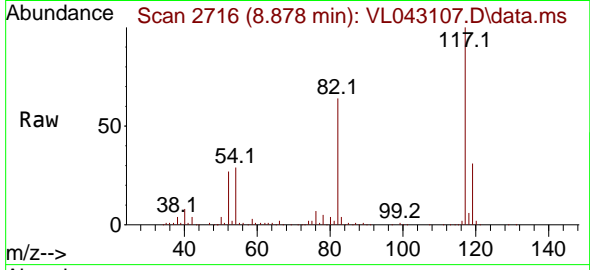
Tgt Ion:107 Resp: 19711
 Ion Ratio Lower Upper
 107 100
 109 80.7 73.4 110.2





#55
 Chlorobenzene-d5
 Concen: 10.000 ppbv
 RT: 8.878 min Scan# 2176
 Delta R.T. -0.007 min
 Lab File: VL043107.D
 Acq: 14 Oct 2025 12:01

Instrument : MSVOA_L
 ClientSampleId : VSTDIC001

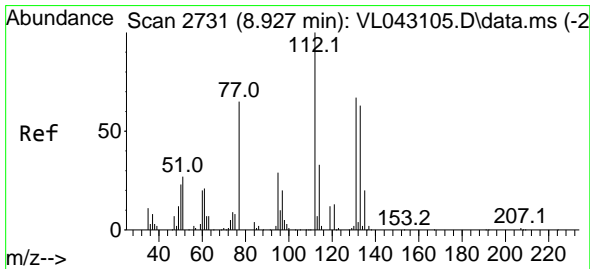
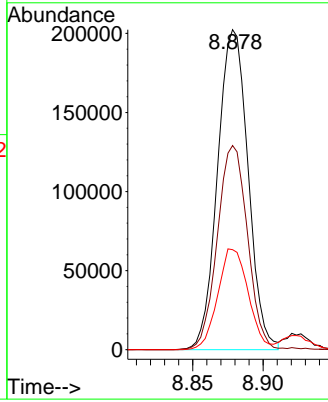
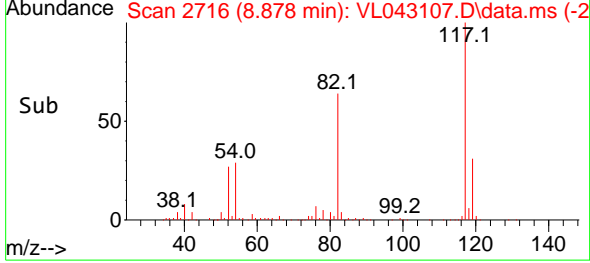


Tgt Ion:117 Resp: 305409

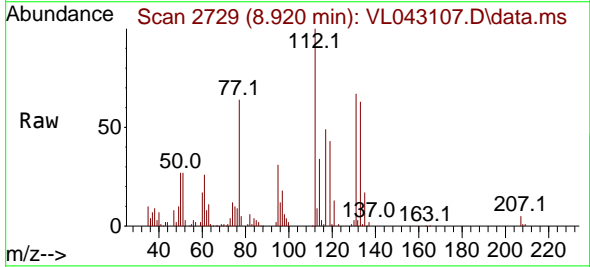
Ion	Ratio	Lower	Upper
117	100		
82	63.4	53.8	80.8
119	32.3	25.4	38.0

Manual Integrations
APPROVED

Reviewed By :Semsettin Yesilyurt 10/16/2025
 Supervised By :Mahesh Dadoda 10/16/2025

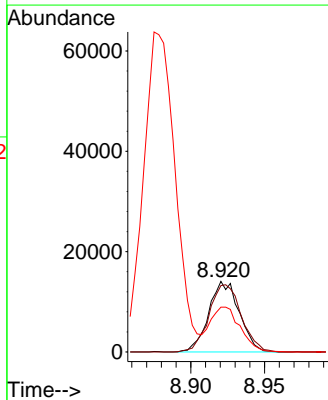
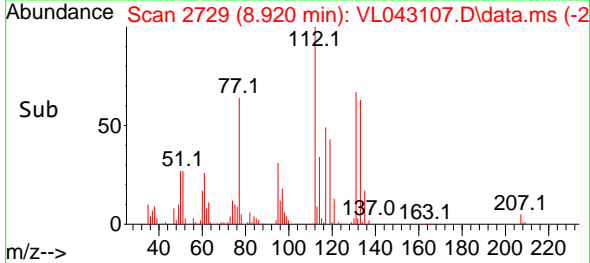


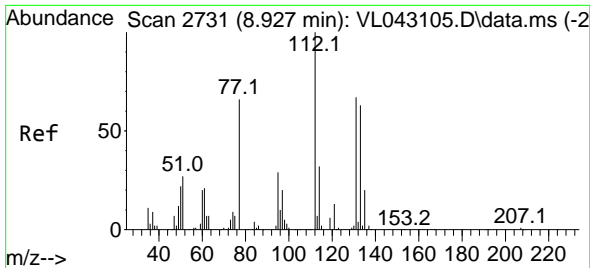
#56
 1,1,1,2-Tetrachloroethane
 Concen: 1.053 ppbv
 RT: 8.920 min Scan# 2729
 Delta R.T. -0.007 min
 Lab File: VL043107.D
 Acq: 14 Oct 2025 12:01



Tgt Ion:131 Resp: 20279

Ion	Ratio	Lower	Upper
131	100		
133	100.9	75.7	113.5
119	62.1	50.6	76.0





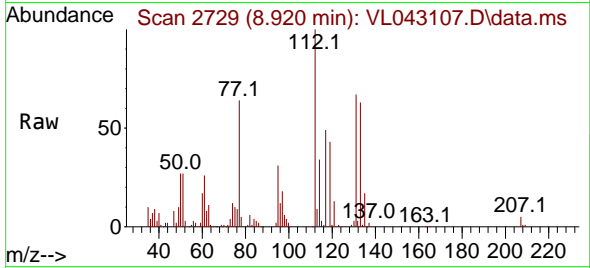
#57
 Chlorobenzene
 Concen: 1.079 ppbv
 RT: 8.920 min Scan# 2729
 Delta R.T. -0.007 min
 Lab File: VL043107.D
 Acq: 14 Oct 2025 12:01

Instrument :

MSVOA_L

ClientSampleId :

VSTDIC001

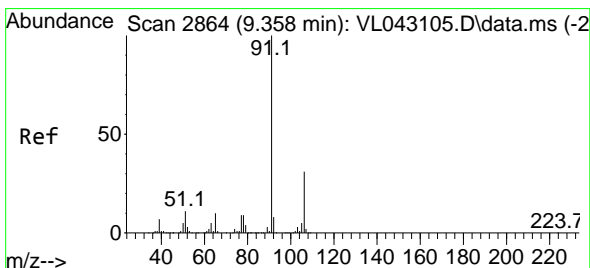
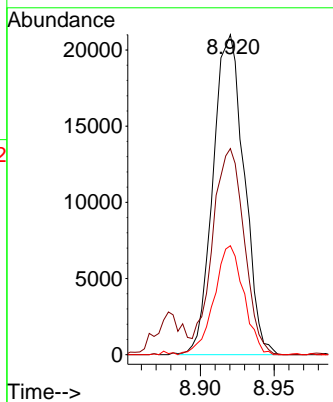
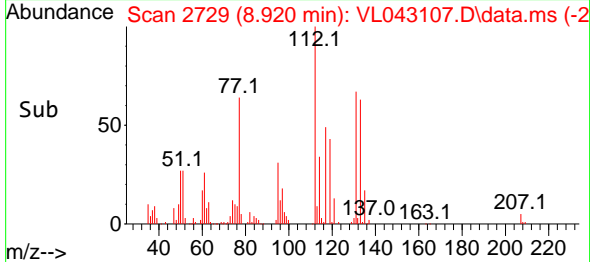


Tgt Ion: 112 Resp: 30824
 Ion Ratio Lower Upper
 112 100
 77 64.2 53.3 79.9
 114 34.1 29.3 35.8

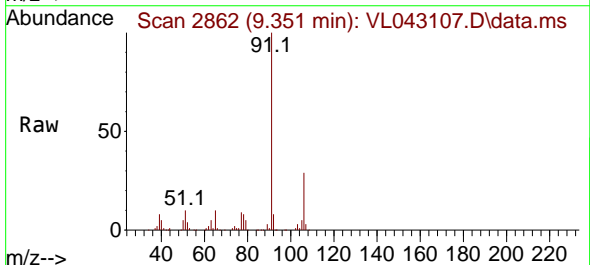
Manual Integrations

APPROVED

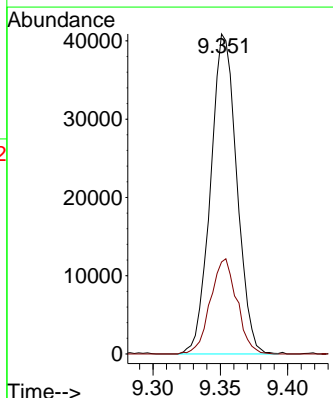
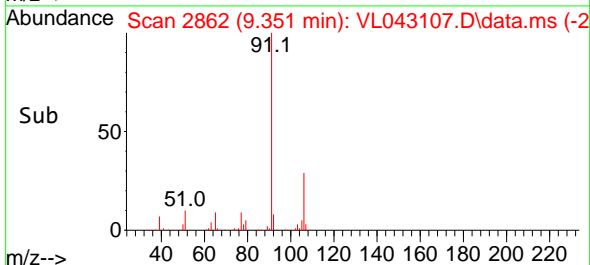
Reviewed By :Semsettin Yesilyurt 10/16/2025
 Supervised By :Mahesh Dadoda 10/16/2025

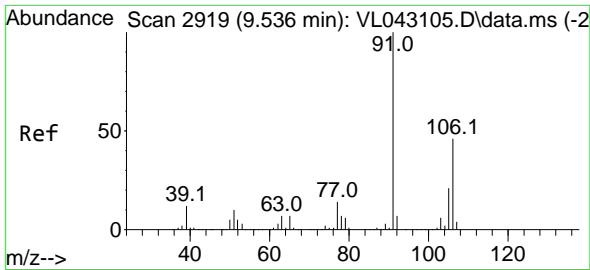


#58
 Ethyl Benzene
 Concen: 1.049 ppbv
 RT: 9.351 min Scan# 2862
 Delta R.T. -0.007 min
 Lab File: VL043107.D
 Acq: 14 Oct 2025 12:01



Tgt Ion: 91 Resp: 55420
 Ion Ratio Lower Upper
 91 100
 106 28.7 24.8 37.2





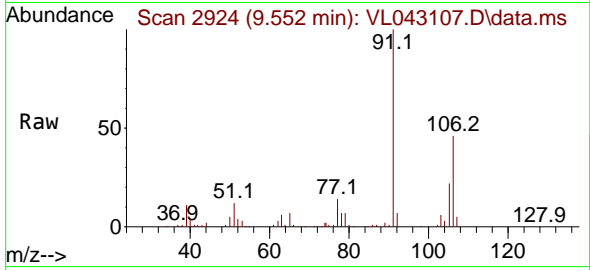
#59
 m/p-Xylene
 Concen: 2.127 ppbv m
 RT: 9.552 min Scan# 2919
 Delta R.T. 0.016 min
 Lab File: VL043107.D
 Acq: 14 Oct 2025 12:01

Instrument :

MSVOA_L

Client SampleID :

VSTDIC001

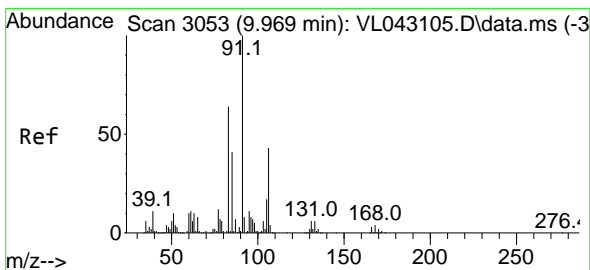
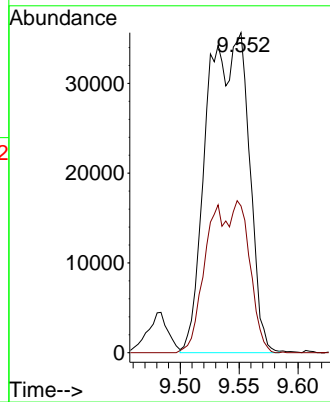
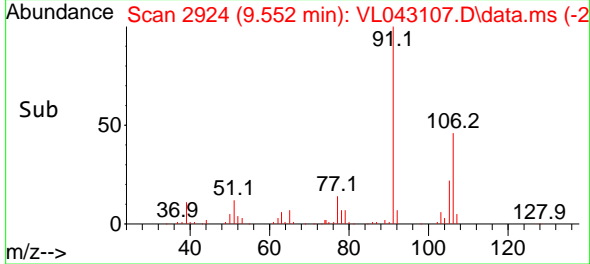


Tgt Ion: 91 Resp: 8898
 Ion Ratio Lower Upper
 91 100
 106 0.0 38.0 57.0

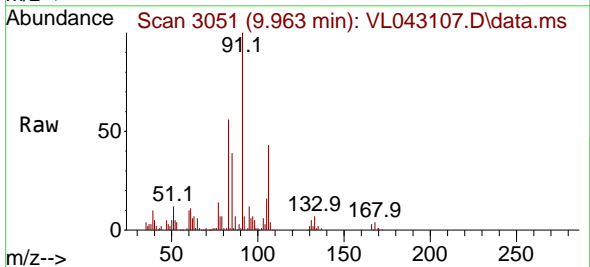
Manual Integrations

APPROVED

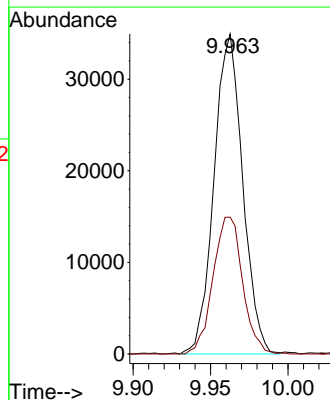
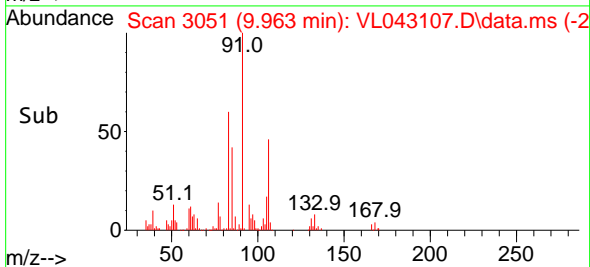
Reviewed By :Semsettin Yesilyurt 10/16/2025
 Supervised By :Mahesh Dadoda 10/16/2025

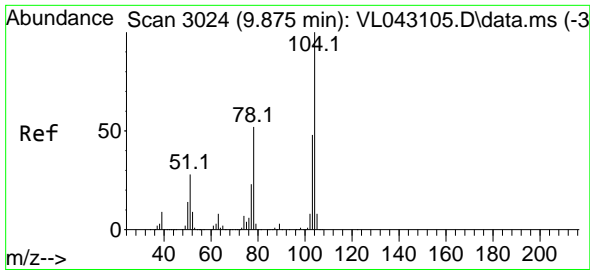


#60
 o-Xylene
 Concen: 1.088 ppbv
 RT: 9.963 min Scan# 3051
 Delta R.T. -0.007 min
 Lab File: VL043107.D
 Acq: 14 Oct 2025 12:01



Tgt Ion: 91 Resp: 44925
 Ion Ratio Lower Upper
 91 100
 106 44.1 21.9 65.8





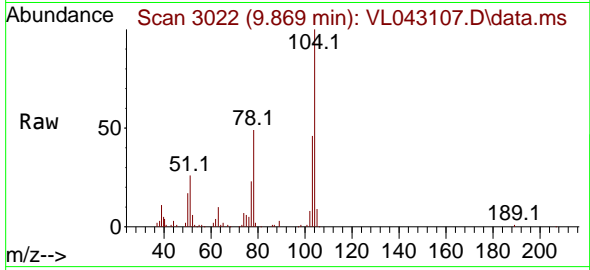
#61
 Styrene
 Concen: 1.063 ppbv
 RT: 9.869 min Scan# 3022
 Delta R.T. -0.007 min
 Lab File: VL043107.D
 Acq: 14 Oct 2025 12:01

Instrument :

MSVOA_L

ClientSampleId :

VSTDIC001

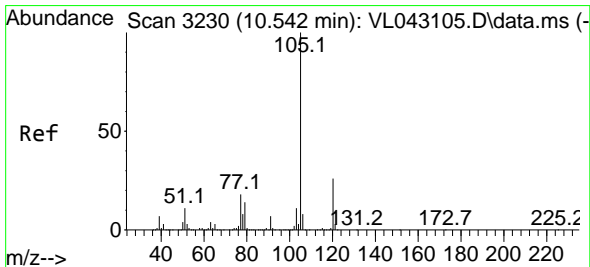
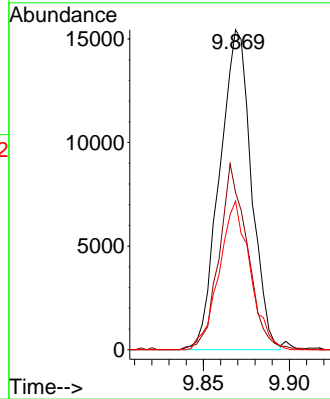
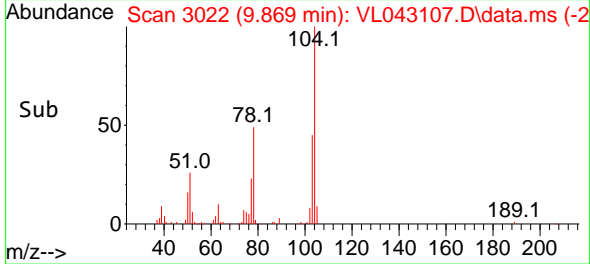


Tgt Ion:104 Resp: 19809
 Ion Ratio Lower Upper
 104 100
 78 51.8 40.2 60.2
 103 45.5 36.9 55.3

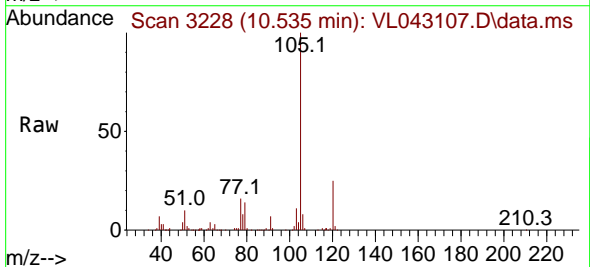
Manual Integrations

APPROVED

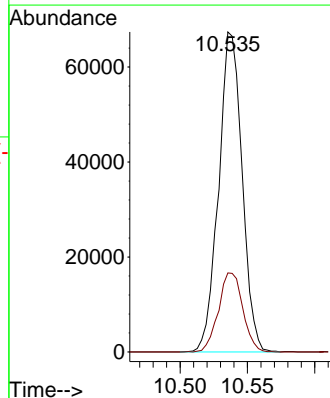
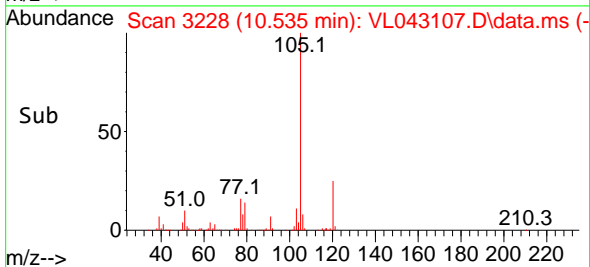
Reviewed By :Semsettin Yesilyurt 10/16/2025
 Supervised By :Mahesh Dadoda 10/16/2025

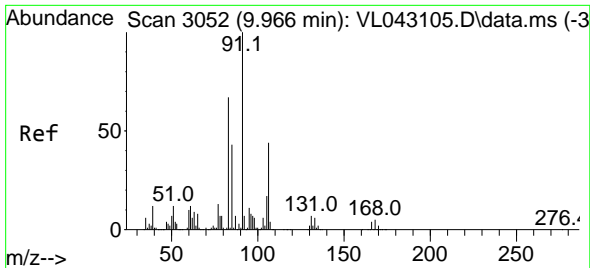


#62
 Isopropylbenzene
 Concen: 1.093 ppbv
 RT: 10.535 min Scan# 3228
 Delta R.T. -0.007 min
 Lab File: VL043107.D
 Acq: 14 Oct 2025 12:01



Tgt Ion:105 Resp: 81579
 Ion Ratio Lower Upper
 105 100
 120 25.6 20.2 30.4





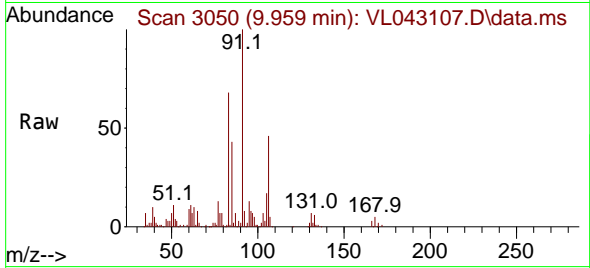
#63
 1,1,2,2-Tetrachloroethane
 Concen: 1.021 ppbv
 RT: 9.959 min Scan# 3050
 Delta R.T. -0.007 min
 Lab File: VL043107.D
 Acq: 14 Oct 2025 12:01

Instrument :

MSVOA_L

Client Sample Id :

VSTDIC001

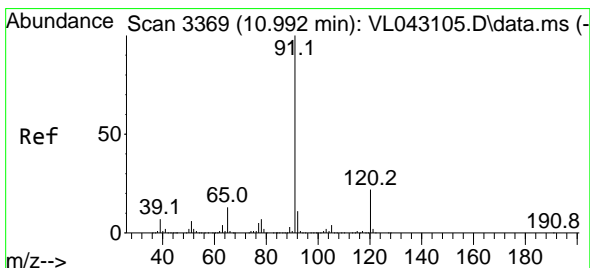
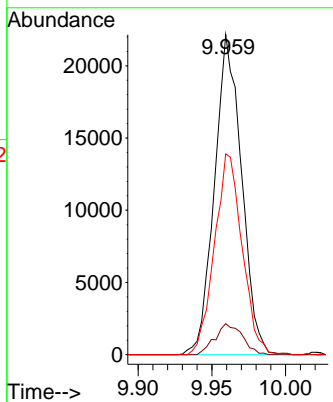
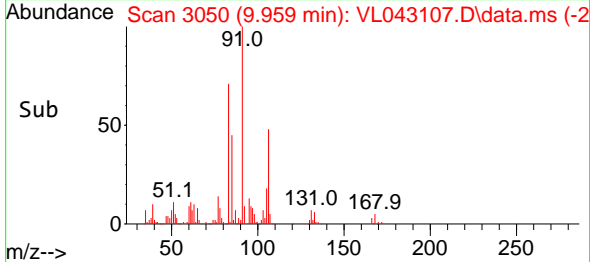


Tgt Ion: 83 Resp: 28230
 Ion Ratio Lower Upper
 83 100
 131 9.8 4.8 14.3
 85 64.3 32.0 96.0

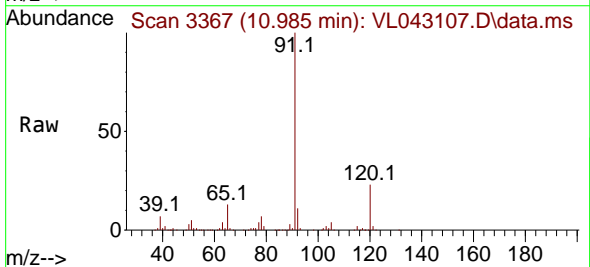
Manual Integrations

APPROVED

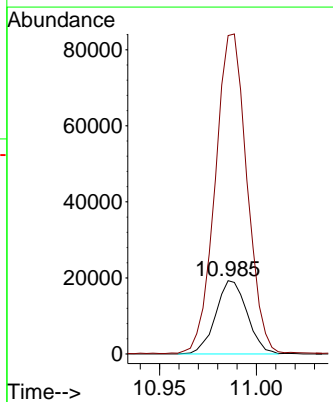
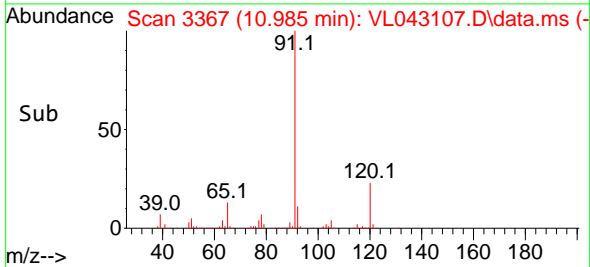
Reviewed By :Semsettin Yesilyurt 10/16/2025
 Supervised By :Mahesh Dadoda 10/16/2025

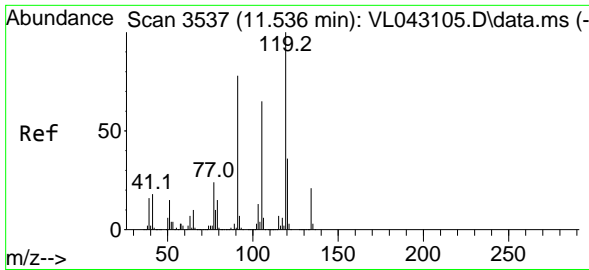


#64
 n-propylbenzene
 Concen: 1.098 ppbv
 RT: 10.985 min Scan# 3367
 Delta R.T. -0.007 min
 Lab File: VL043107.D
 Acq: 14 Oct 2025 12:01



Tgt Ion:120 Resp: 21685
 Ion Ratio Lower Upper
 120 100
 91 446.5 361.6 542.4





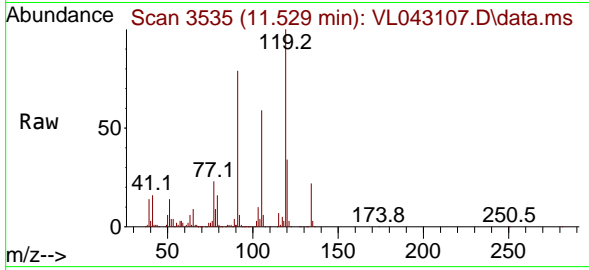
#65
 tert-Butylbenzene
 Concen: 1.105 ppbv
 RT: 11.529 min Scan# 3535
 Delta R.T. -0.007 min
 Lab File: VL043107.D
 Acq: 14 Oct 2025 12:01

Instrument :

MSVOA_L

ClientSampleId :

VSTDIC001

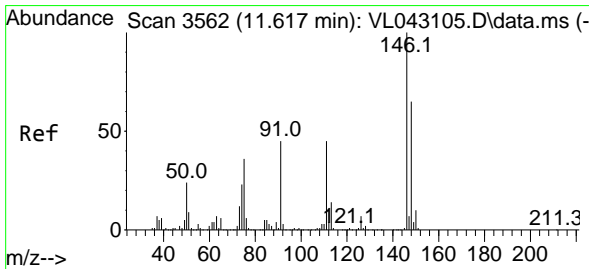
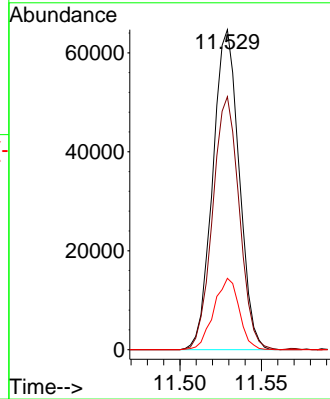
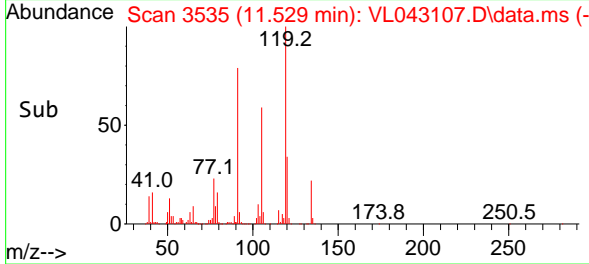


Tgt Ion:119 Resp: 7278
 Ion Ratio Lower Upper
 119 100
 91 79.8 63.4 95.0
 134 21.5 17.3 25.9

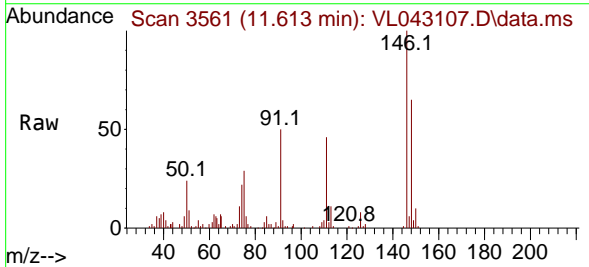
Manual Integrations

APPROVED

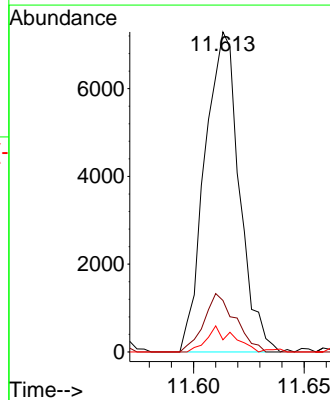
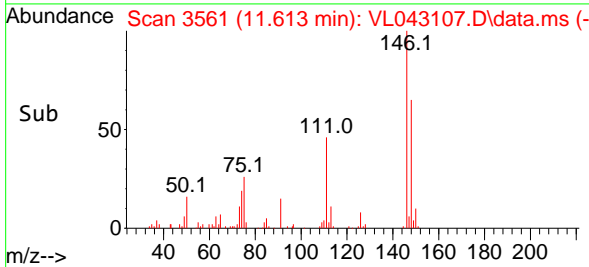
Reviewed By :Semsettin Yesilyurt 10/16/2025
 Supervised By :Mahesh Dadoda 10/16/2025

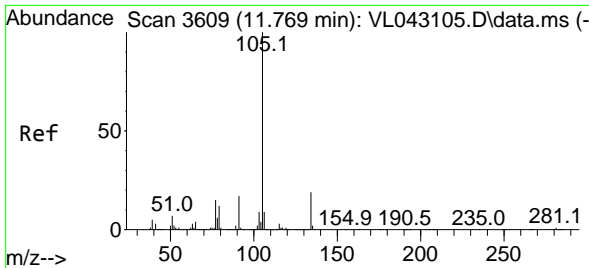


#66
 Benzyl Chloride
 Concen: 1.076 ppbv
 RT: 11.613 min Scan# 3561
 Delta R.T. -0.003 min
 Lab File: VL043107.D
 Acq: 14 Oct 2025 12:01



Tgt Ion: 91 Resp: 7918
 Ion Ratio Lower Upper
 91 100
 126 16.6 14.6 22.0
 128 6.6 4.6 6.8





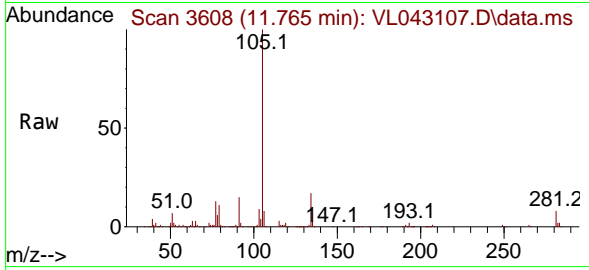
#67
 sec-Butylbenzene
 Concen: 1.103 ppbv
 RT: 11.765 min Scan# 30
 Delta R.T. -0.003 min
 Lab File: VL043107.D
 Acq: 14 Oct 2025 12:01

Instrument :

MSVOA_L

ClientSampleId :

VSTDICC001

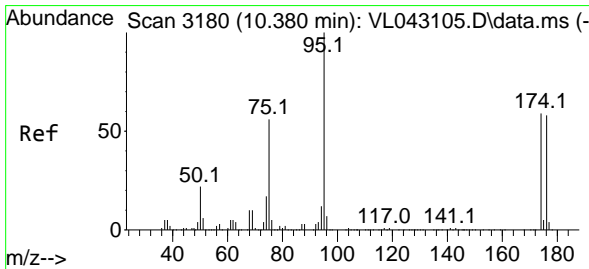
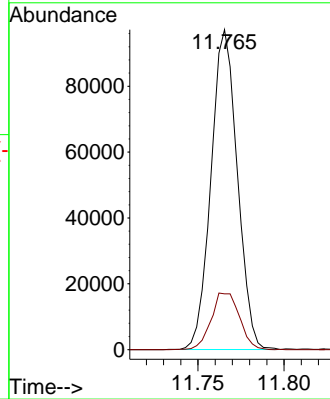
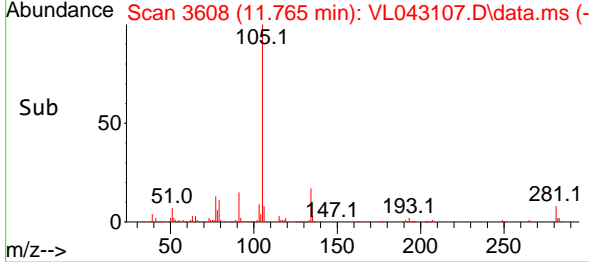


Tgt Ion:105 Resp: 10315
 Ion Ratio Lower Upper
 105 100
 134 19.2 15.5 23.3

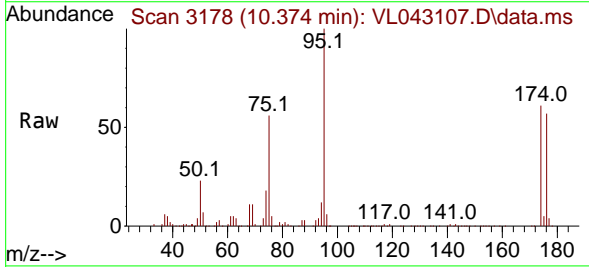
Manual Integrations

APPROVED

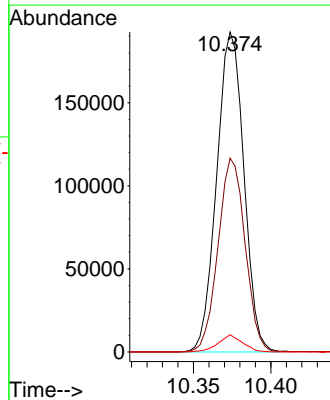
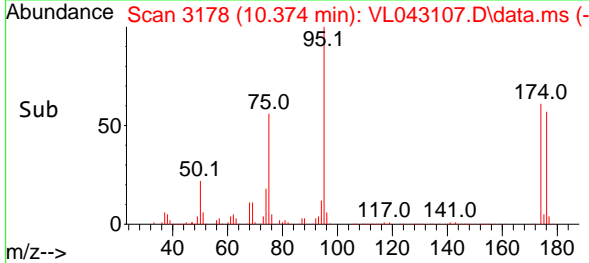
Reviewed By :Semsettin Yesilyurt 10/16/2025
 Supervised By :Mahesh Dadoda 10/16/2025

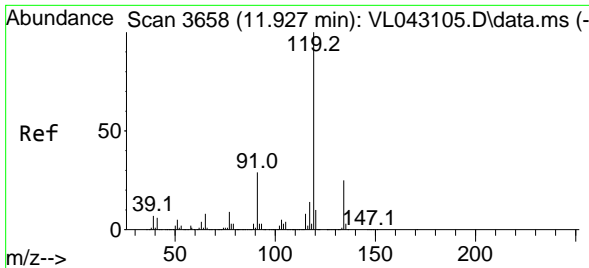


#68
 1-Bromo-4-Fluorobenzene
 Concen: 9.912 ppbv
 RT: 10.374 min Scan# 3178
 Delta R.T. -0.007 min
 Lab File: VL043107.D
 Acq: 14 Oct 2025 12:01



Tgt Ion: 95 Resp: 235307
 Ion Ratio Lower Upper
 95 100
 174 60.3 48.3 72.5
 175 4.8 3.8 5.8





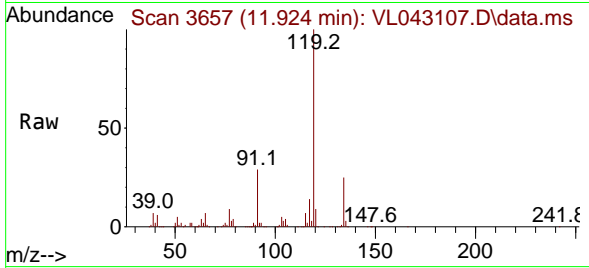
#69
 p-Isopropyltoluene
 Concen: 1.113 ppbv
 RT: 11.924 min Scan# 3657
 Delta R.T. -0.003 min
 Lab File: VL043107.D
 Acq: 14 Oct 2025 12:01

Instrument :

MSVOA_L

ClientSampleId :

VSTDIC001

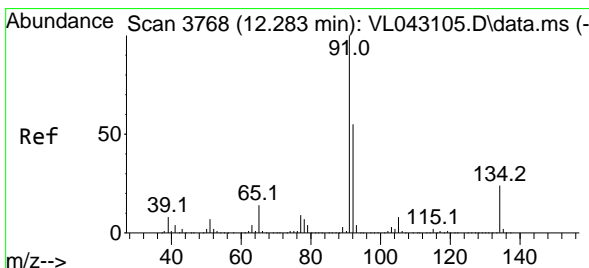
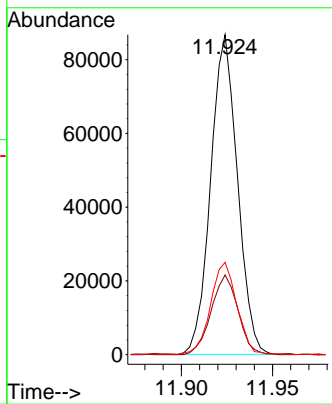
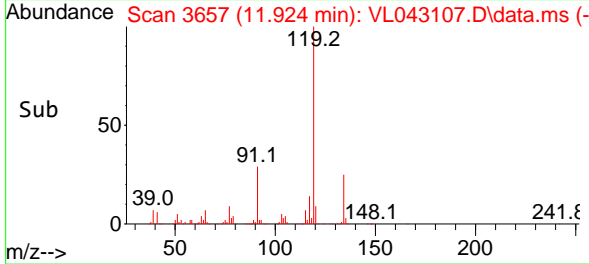


Tgt Ion:119 Resp: 8844
 Ion Ratio Lower Upper
 119 100
 134 25.1 20.3 30.5
 91 28.9 22.6 33.8

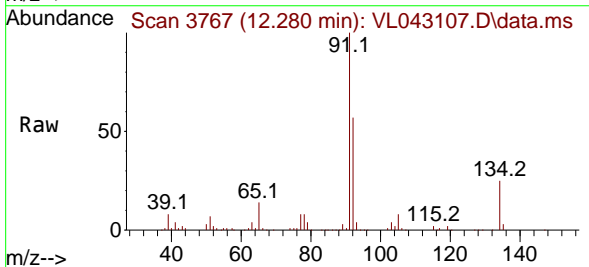
Manual Integrations

APPROVED

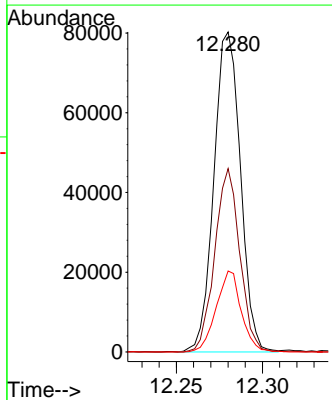
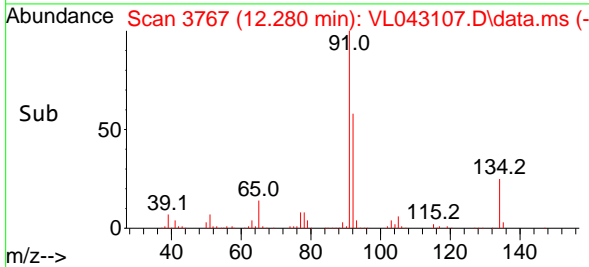
Reviewed By :Semsettin Yesilyurt 10/16/2025
 Supervised By :Mahesh Dadoda 10/16/2025

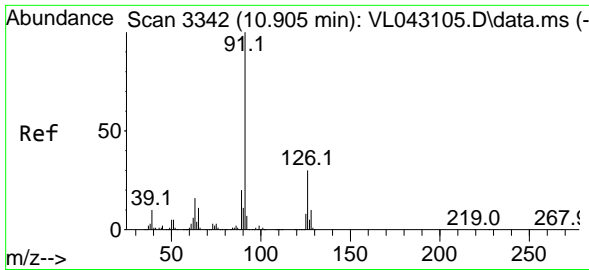


#70
 n-Butylbenzene
 Concen: 1.100 ppbv
 RT: 12.280 min Scan# 3767
 Delta R.T. -0.003 min
 Lab File: VL043107.D
 Acq: 14 Oct 2025 12:01



Tgt Ion: 91 Resp: 86120
 Ion Ratio Lower Upper
 91 100
 92 54.1 44.5 66.7
 134 23.9 19.3 28.9





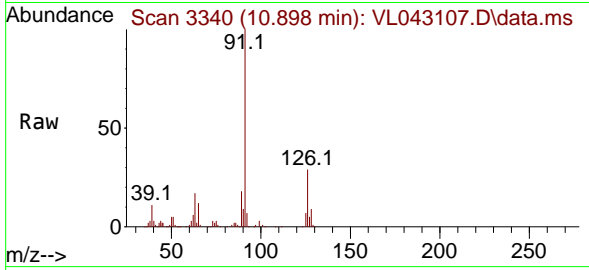
#71
 2-Chlorotoluene
 Concen: 1.072 ppbv
 RT: 10.898 min Scan# 311
 Delta R.T. -0.007 min
 Lab File: VL043107.D
 Acq: 14 Oct 2025 12:01

Instrument :

MSVOA_L

ClientSampleId :

VSTDIC001

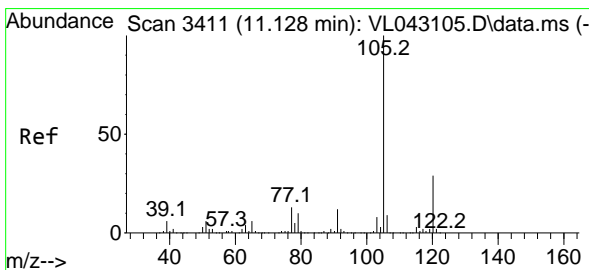
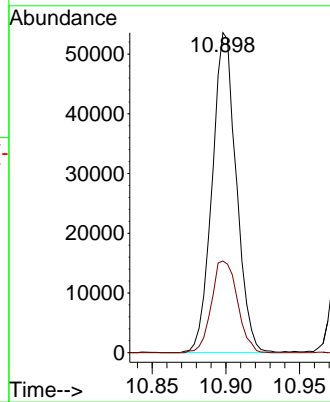
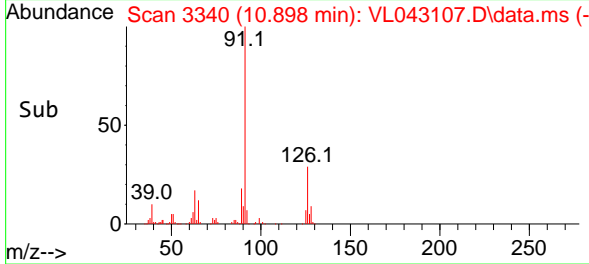


Tgt Ion: 91 Resp: 60994
 Ion Ratio Lower Upper
 91 100
 126 30.8 12.0 48.0

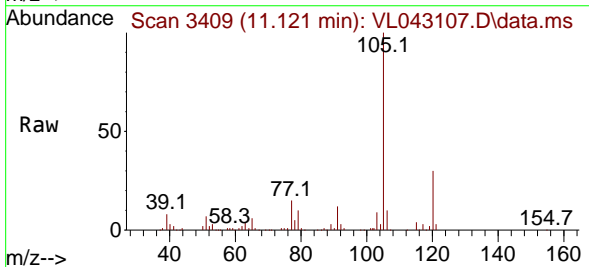
Manual Integrations

APPROVED

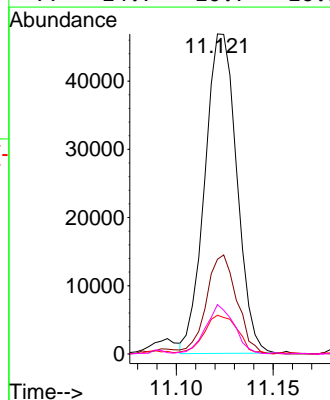
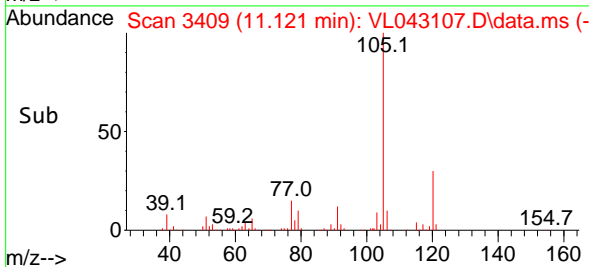
Reviewed By :Semsettin Yesilyurt 10/16/2025
 Supervised By :Mahesh Dadoda 10/16/2025

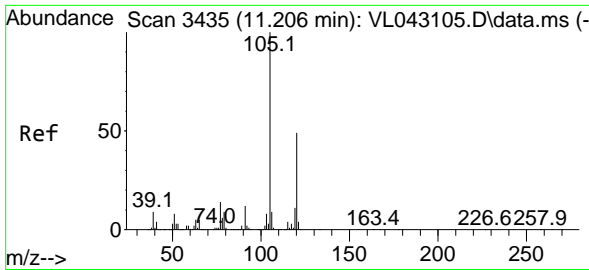


#72
 4-Ethyltoluene
 Concen: 1.059 ppbv
 RT: 11.121 min Scan# 3409
 Delta R.T. -0.007 min
 Lab File: VL043107.D
 Acq: 14 Oct 2025 12:01



Tgt Ion:105 Resp: 53788
 Ion Ratio Lower Upper
 105 100
 120 31.0 24.2 36.4
 91 14.0 10.0 15.0
 77 14.7 10.7 16.1





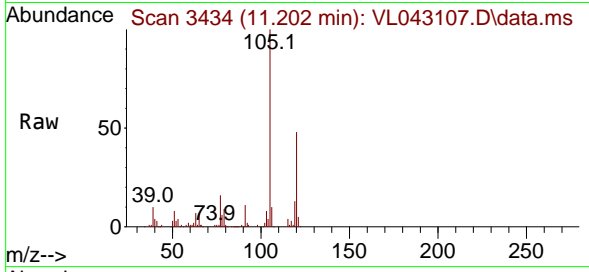
#73
 1,3,5-Trimethylbenzene
 Concen: 1.070 ppbv
 RT: 11.202 min Scan# 3434
 Delta R.T. -0.003 min
 Lab File: VL043107.D
 Acq: 14 Oct 2025 12:01

Instrument :

MSVOA_L

Client Sample Id :

VSTDIC001

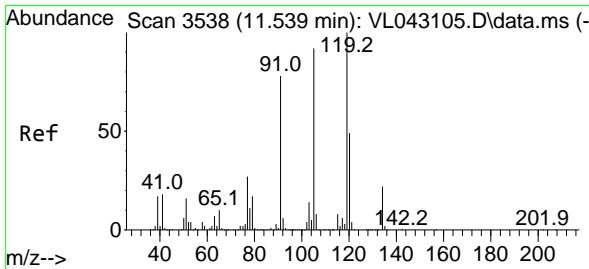
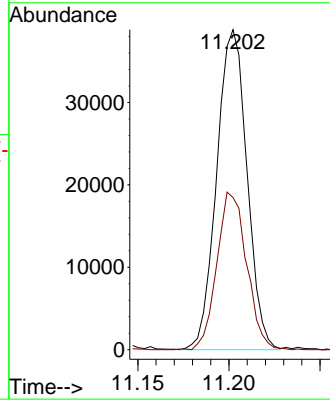
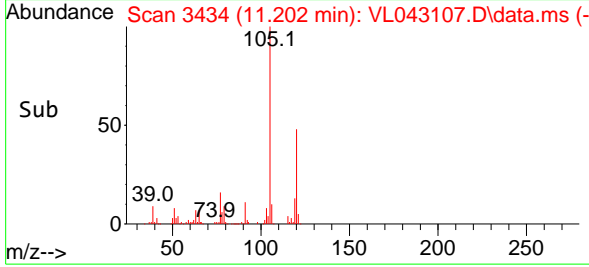


Tgt Ion:105 Resp: 44780
 Ion Ratio Lower Upper
 105 100
 120 47.3 39.0 58.6

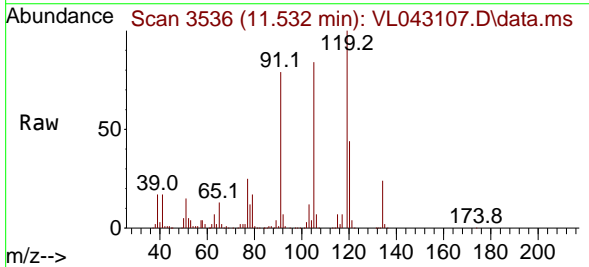
Manual Integrations

APPROVED

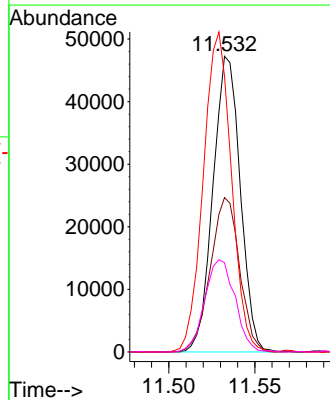
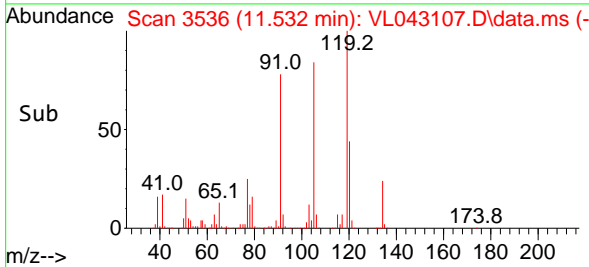
Reviewed By :Semsettin Yesilyurt 10/16/2025
 Supervised By :Mahesh Dadoda 10/16/2025

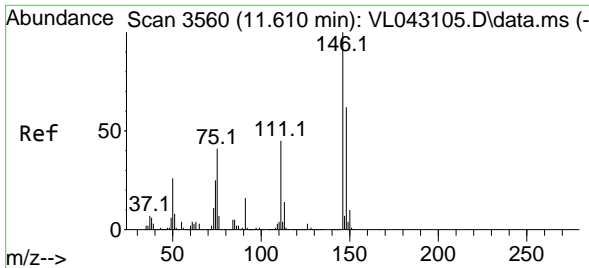


#74
 1,2,4-Trimethylbenzene
 Concen: 1.112 ppbv
 RT: 11.532 min Scan# 3536
 Delta R.T. -0.007 min
 Lab File: VL043107.D
 Acq: 14 Oct 2025 12:01



Tgt Ion:105 Resp: 52118
 Ion Ratio Lower Upper
 105 100
 120 52.2 42.8 64.2
 91 93.1 68.3 102.5
 77 30.2 23.4 35.0





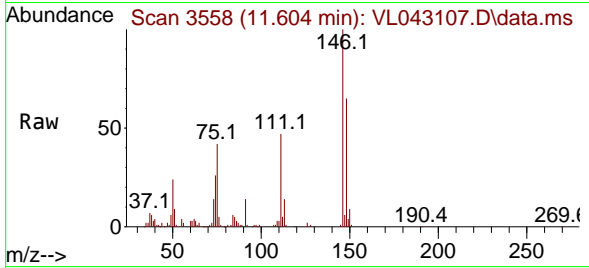
#75
 1,3-Dichlorobenzene
 Concen: 1.074 ppbv
 RT: 11.604 min Scan# 3558
 Delta R.T. -0.007 min
 Lab File: VL043107.D
 Acq: 14 Oct 2025 12:01

Instrument :

MSVOA_L

ClientSampleId :

VSTDIC001

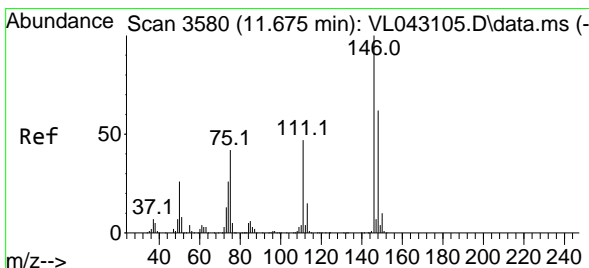
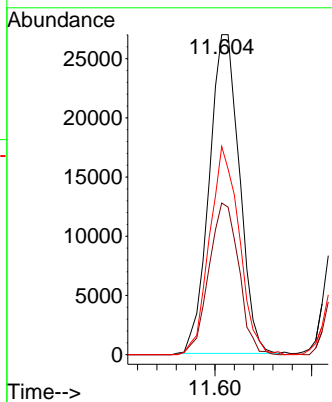
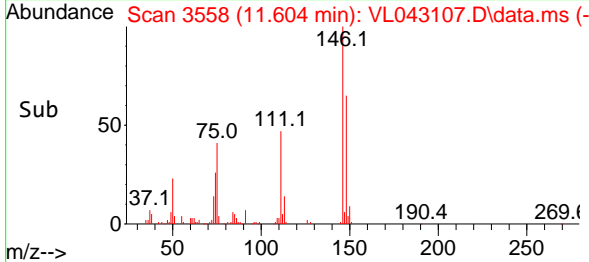


Tgt Ion:146 Resp: 29180
 Ion Ratio Lower Upper
 146 100
 111 47.0 23.3 69.9
 148 64.0 31.6 95.0

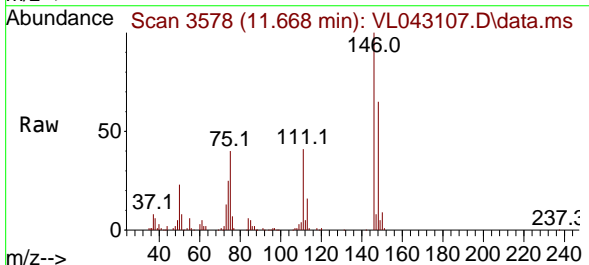
Manual Integrations

APPROVED

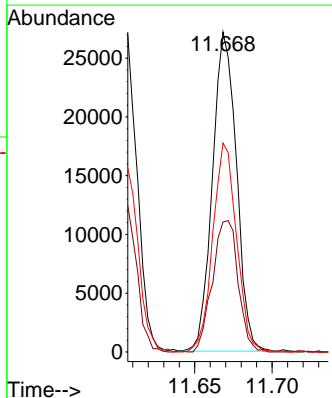
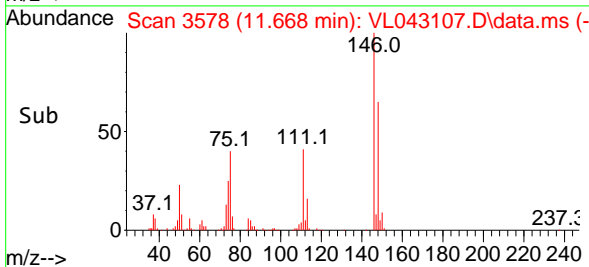
Reviewed By :Semsettin Yesilyurt 10/16/2025
 Supervised By :Mahesh Dadoda 10/16/2025

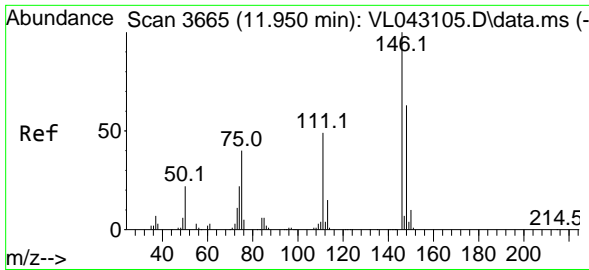


#76
 1,4-Dichlorobenzene
 Concen: 1.066 ppbv
 RT: 11.668 min Scan# 3578
 Delta R.T. -0.007 min
 Lab File: VL043107.D
 Acq: 14 Oct 2025 12:01



Tgt Ion:146 Resp: 29225
 Ion Ratio Lower Upper
 146 100
 111 44.2 22.4 67.0
 148 65.0 31.6 94.7





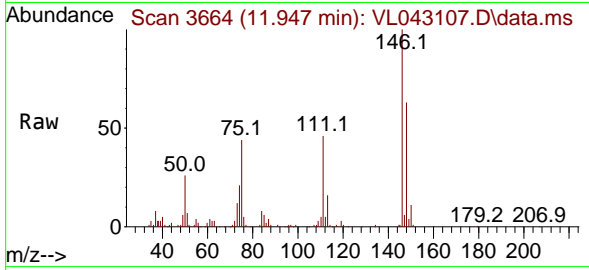
#77
 1,2-Dichlorobenzene
 Concen: 1.109 ppbv
 RT: 11.947 min Scan# 30
 Delta R.T. -0.003 min
 Lab File: VL043107.D
 Acq: 14 Oct 2025 12:01

Instrument :

MSVOA_L

ClientSampleId :

VSTDIC001

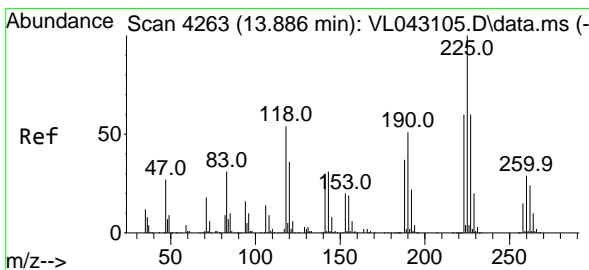
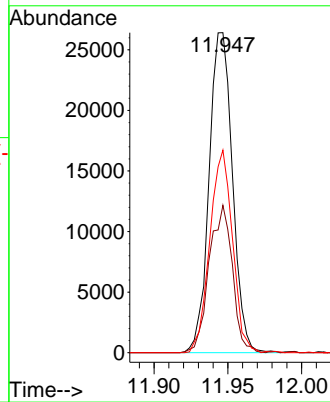
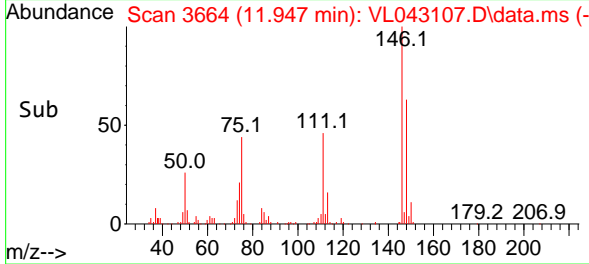


Tgt Ion:146 Resp: 29140
 Ion Ratio Lower Upper
 146 100
 111 45.8 24.0 72.0
 148 61.5 31.1 93.3

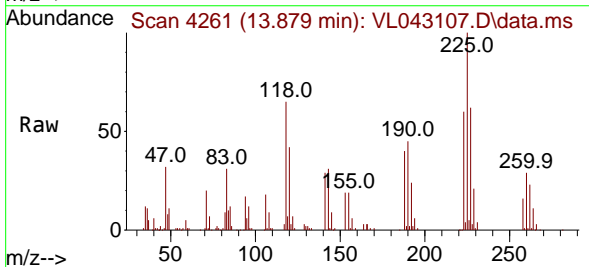
Manual Integrations

APPROVED

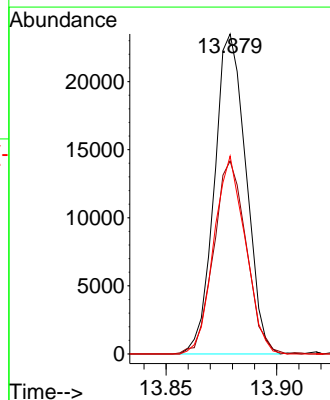
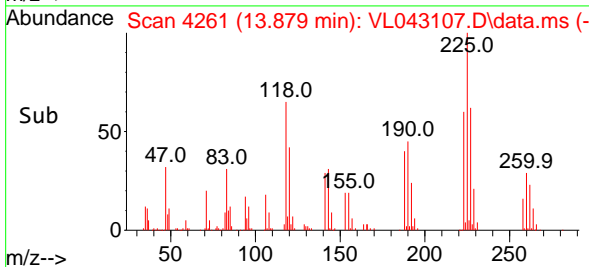
Reviewed By :Semsettin Yesilyurt 10/16/2025
 Supervised By :Mahesh Dadoda 10/16/2025

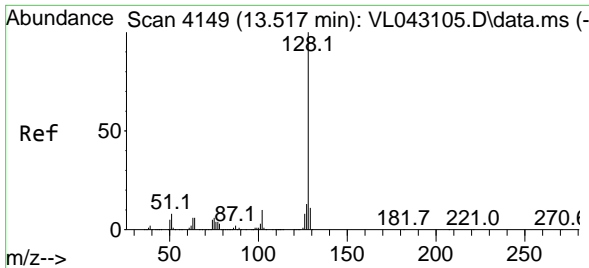


#78
 Hexachloro-1,3-Butadiene
 Concen: 1.146 ppbv
 RT: 13.879 min Scan# 4261
 Delta R.T. -0.007 min
 Lab File: VL043107.D
 Acq: 14 Oct 2025 12:01



Tgt Ion:225 Resp: 23330
 Ion Ratio Lower Upper
 225 100
 223 62.4 50.2 75.4
 227 61.6 49.6 74.4





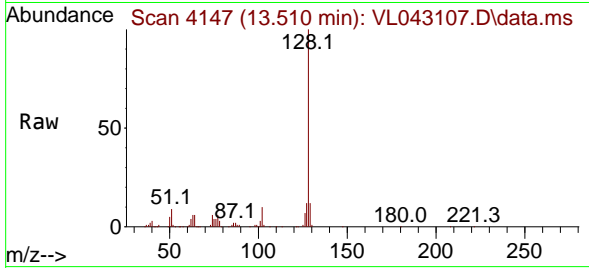
#79
 Naphthalene
 Concen: 1.114 ppbv
 RT: 13.510 min Scan# 4147
 Delta R.T. -0.007 min
 Lab File: VL043107.D
 Acq: 14 Oct 2025 12:01

Instrument :

MSVOA_L

Client Sample Id :

VSTDIC001

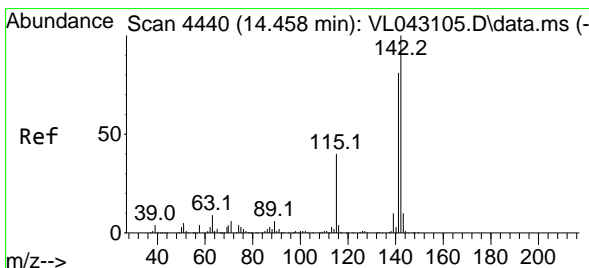
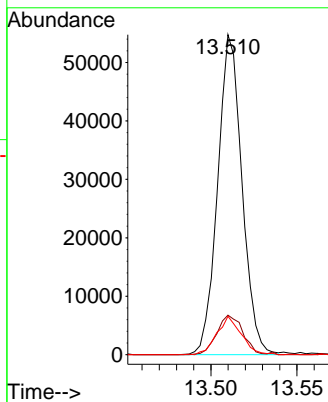
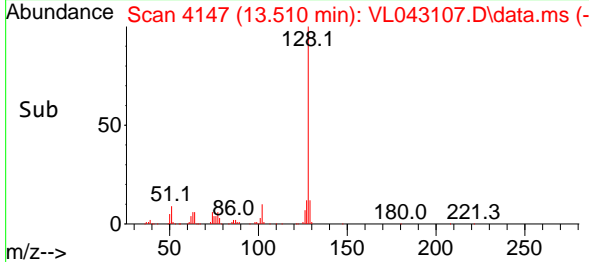


Tgt Ion:128 Resp: 53930
 Ion Ratio Lower Upper
 128 100
 127 12.4 10.5 15.7
 129 12.0 9.1 13.7

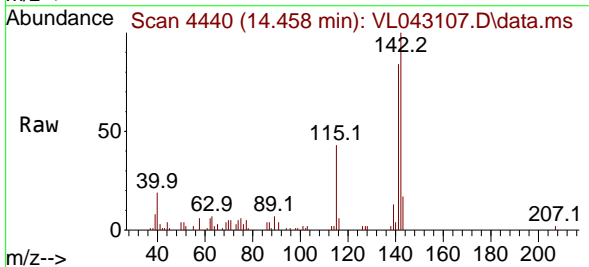
Manual Integrations

APPROVED

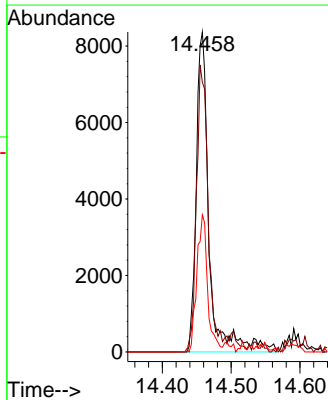
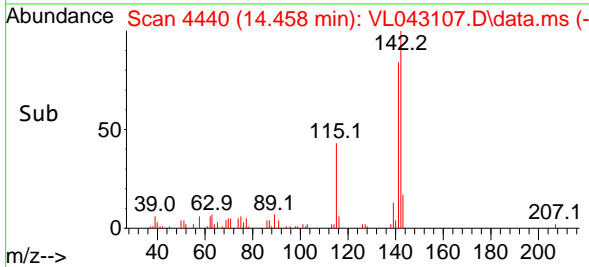
Reviewed By :Semsettin Yesilyurt 10/16/2025
 Supervised By :Mahesh Dadoda 10/16/2025

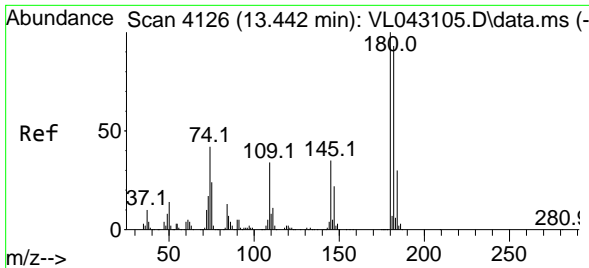


#80
 Naphthalene,2-methyl-
 Concen: 0.849 ppbv
 RT: 14.458 min Scan# 4440
 Delta R.T. -0.000 min
 Lab File: VL043107.D
 Acq: 14 Oct 2025 12:01



Tgt Ion:142 Resp: 10851
 Ion Ratio Lower Upper
 142 100
 141 88.9 64.6 97.0
 115 38.1 30.2 45.4





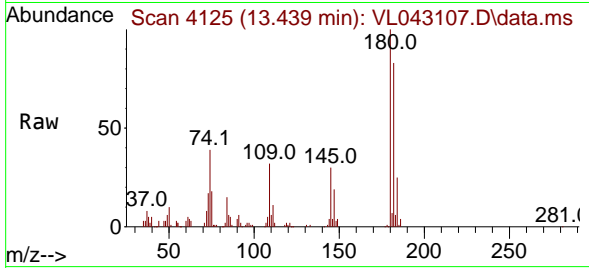
#81
 1,2,4-Trichlorobenzene
 Concen: 1.090 ppbv
 RT: 13.439 min Scan# 4126
 Delta R.T. -0.003 min
 Lab File: VL043107.D
 Acq: 14 Oct 2025 12:01

Instrument :

MSVOA_L

ClientSampleId :

VSTDIC001



Tgt Ion:180 Resp: 2216

Ion	Ratio	Lower	Upper
180	100		
182	92.5	75.5	113.3
184	28.8	23.9	35.9

Manual Integrations

APPROVED

Reviewed By :Semsettin Yesilyurt 10/16/2025
 Supervised By :Mahesh Dadoda 10/16/2025

