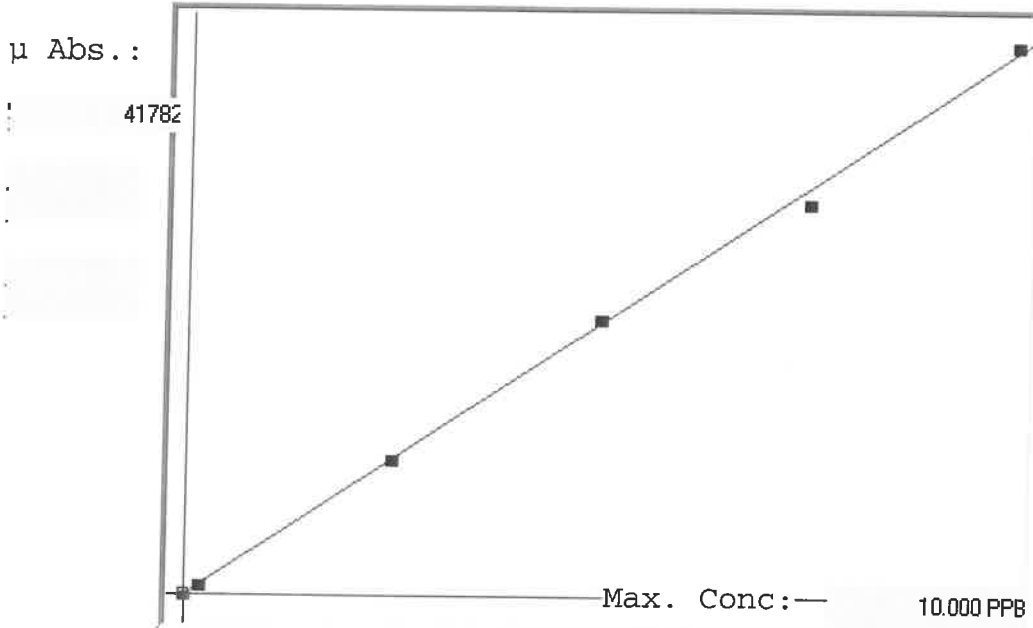


LA137835

7470A

INSTRUMENT ID: CV1

Linear



A= 0.0000e+000  
 B= 2.4227e-004  
 C= 5.1977e-003  
 Rho= 0.9993748  
 Accept=Accepted

Std ID	Conc.	Calc.	Dev.	Mean	SD or %RSD	Rep 1	Rep 2	Rep 3	Rep 4	Rep 5
0.0	0.000	0.022	0.022	69	0.000	69	0			
0.2	0.200	0.186	-0.014	747	0.0 %	747	0			
2.5	2.500	2.512	0.012	10349	0.0 %	10349	0			
5.0	5.000	5.118	0.118	21105	0.0 %	21105				
7.5	7.500	7.234	-0.266	29836	0.0 %	29836				
10.0	10.000	10.128	0.128	41782	0.0 %	41782				

# LB137835 INSTRUMENT ID : CV1

Method: 7470A      Operator: Admin      Date of Analysis: 10 Nov 2025 13:39:43

Type	Sample ID	Extended ID	Conc.	µ Abs.	Units	Type	Std Conc	Method	Date
S	0.0 - 1	5.0	-	69	PPB	Std	0.0000	7470A	10 Nov 2025 14:08:32
S	0.2 - 1	5.2	-	747	PPB	Std	0.2000	7470A	10 Nov 2025 14:11:01
S	2.5 - 1	52.5	-	10349	PPB	Std	2.5000	7470A	10 Nov 2025 14:13:18
S	5.0 - 1	5	-	21105	PPB	Std	5.0000	7470A	10 Nov 2025 14:15:36
S	7.5 - 1	5.75	-	29836	PPB	Std	7.5000	7470A	10 Nov 2025 14:17:54
S	10.0 - 1	5.1	-	41782	PPB	Std	10.0000	7470A	10 Nov 2025 14:27:02
U	ICV108 - 1	ICV108	3.8599	15911	PPB	SMPL	-7470A		10 Nov 2025 14:29:55
U	ICB108 - 1	ICB108	-0.0324	-155	PPB	SMPL	-7470A		10 Nov 2025 14:32:10
U	CCV53 - 1	CCV53	4.9693	20490	PPB	SMPL	-7470A		10 Nov 2025 14:34:28
U	CCB53 - 1	CCB53	-0.0508	-231	PPB	SMPL	-7470A		10 Nov 2025 14:36:43
U	CRA - 1	CRA	0.1719	688	PPB	SMPL	-7470A		10 Nov 2025 14:39:01
U	HighStd - 1	HighStd	10.0729	41556	PPB	SMPL	-7470A		10 Nov 2025 14:41:15
U	ChkStd - 1	ChkStd	6.6109	27266	PPB	SMPL	-7470A		10 Nov 2025 14:43:31
U	PB170468BL - 1	PBW	-0.0762	-336	PPB	SMPL	-7470A		10 Nov 2025 14:45:55
U	PB170468BS - 1	LCSW	3.6833	15182	PPB	SMPL	-7470A		10 Nov 2025 14:48:15
U	Q3561-01 - 1	1027-A-D	0.1132	446	PPB	SMPL	-7470A		10 Nov 2025 14:50:31
U	Q3569-01 - 1	MW-2	-0.0079	-54	PPB	SMPL	-7470A		10 Nov 2025 14:52:50
U	Q3569-02 - 1	MW-12	0.0520	193	PPB	SMPL	-7470A		10 Nov 2025 14:55:07
U	Q3574-01 - 1	304641-01 Liquid	0.1510	602	PPB	SMPL	-7470A		10 Nov 2025 14:57:24
U	Q3584-01 - 1	SW-1	-0.0258	-128	PPB	SMPL	-7470A		10 Nov 2025 14:59:39
U	CCV54 - 1	CCV54	4.7670	19655	PPB	SMPL	-7470A		10 Nov 2025 15:01:54
U	CCB54 - 1	CCB54	-0.0525	-238	PPB	SMPL	-7470A		10 Nov 2025 15:04:10
U	Q3584-01DUP - 1	SW-1DUP	0.0251	82	PPB	SMPL	-7470A		10 Nov 2025 15:06:28
U	Q3584-01MS - 1	SW-1MS	3.5852	14777	PPB	SMPL	-7470A		10 Nov 2025 15:08:44
U	Q3584-01MSD - 1	SW-1MSD	3.2632	13448	PPB	SMPL	-7470A		10 Nov 2025 15:10:59
U	Q3584-02 - 1	SW-2	-0.0105	-65	PPB	SMPL	-7470A		10 Nov 2025 15:13:18
U	Q3584-03 - 1	SW-3	0.0573	215	PPB	SMPL	-7470A		10 Nov 2025 15:15:37
U	Q3584-05 - 1	FB-2	-0.0072	-51	PPB	SMPL	-7470A		10 Nov 2025 15:17:53
X	Q3584-07 - 1	SEEP-1	HIGH	101763	PPB		-7470A		10 Nov 2025 15:20:09
U	Q3584-01LX5 - 1		-0.0963	-419	PPB	SMPL	-7470A		11 Nov 2025 07:59:03
U	Q3584-01A - 1		4.7229	19473	PPB	SMPL	-7470A		11 Nov 2025 08:22:55
U	CCV55 - 1	CCV55	5.0478	20814	PPB	SMPL	-7470A		11 Nov 2025 08:36:25
U	CCB55 - 1	CCB55	-0.0105	-65	PPB	SMPL	-7470A		11 Nov 2025 08:38:40