

LB137868

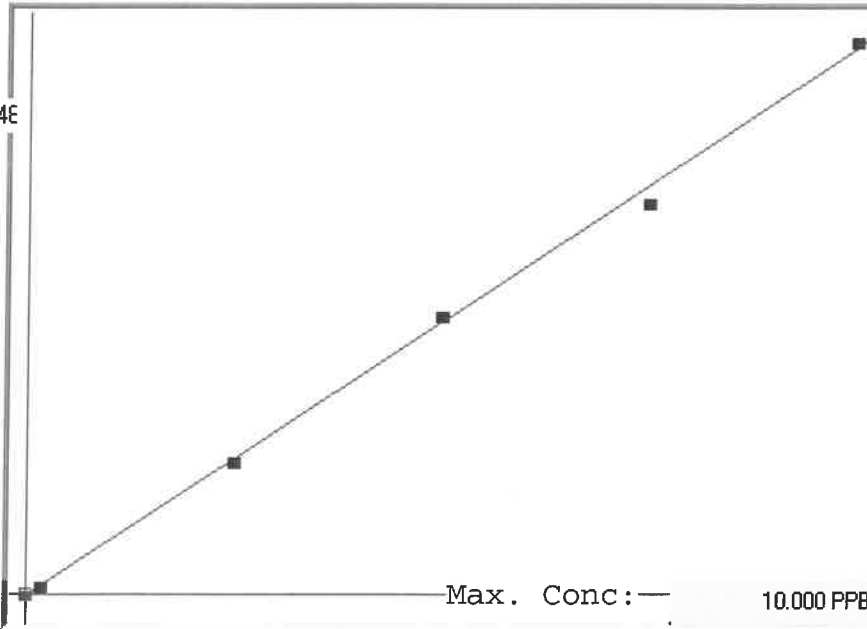
7470A

INSTRUMENT ID: CV1

Linear

μ Abs. :

43948



A= 0.0000e+000

B= 2.3013e-004

C= 3.8619e-002

Rho= 0.9991465

Accept=Accepted

Std ID	Conc.	Calc.	Dev.	Mean	SD or %RSD	Rep 1	Rep 2	Rep 3	Rep 4	Rep 5
0.0	0.000	0.033	0.033	-25	0.000	-25	0			
0.2	0.200	0.206	0.006	726	0.0 %	726	0			
2.5	2.500	2.476	-0.024	10591	0.0 %	10591	0			
5.0	5.000	5.141	0.141	22172	0.0 %	22172				
7.5	7.500	7.192	-0.308	31086	0.0 %	31086				
10.0	10.000	10.152	0.152	43948	0.0 %	43948				

LB137868 INSTRUMENT ID : CV1

Method: 7470A Operator: Admin Date of Analysis: 12 Nov 2025 14:09:14

Type	Sample ID	Extended ID	Conc.	μ Abs.	Units	Type	Std Conc	Method	Date
S	0.0 - 1	SB	-	-25	PPB	Std	0.0000	7470A	12 Nov 2025 14:15:18
S	0.2 - 1	SP2	-	726	PPB	Std	0.2000	7470A	12 Nov 2025 14:17:36
S	2.5 - 1	SP5	-	10591	PPB	Std	2.5000	7470A	12 Nov 2025 14:19:53
S	5.0 - 1	SP5	-	22172	PPB	Std	5.0000	7470A	12 Nov 2025 14:25:05
S	7.5 - 1	SP5	-	31086	PPB	Std	7.5000	7470A	12 Nov 2025 14:27:22
S	10.0 - 1	SP6	-	43948	PPB	Std	10.0000	7470A	12 Nov 2025 14:29:38
U	ICV111 - 1	ICV111	3.8178	16422	PPB	SMPL	-	7470A	12 Nov 2025 14:32:34
U	ICB111 - 1	ICB111	0.0556	74	PPB	SMPL	-	7470A	12 Nov 2025 14:34:49
U	CCV66 - 1	CCV66	5.1249	22102	PPB	SMPL	-	7470A	12 Nov 2025 14:39:45
U	CCB66 - 1	CCB66	0.0701	137	PPB	SMPL	-	7470A	12 Nov 2025 14:42:00
U	CRA - 1	CRA	0.2266	817	PPB	SMPL	-	7470A	12 Nov 2025 14:44:15
U	HighStd - 1	HighStd	10.0970	43708	PPB	SMPL	-	7470A	12 Nov 2025 14:46:30
U	ChkStd - 1	ChkStd	6.2640	27052	PPB	SMPL	-	7470A	12 Nov 2025 14:48:45
U	PB170511BL - 1	PBW	0.0536	65	PPB	SMPL	-	7470A	12 Nov 2025 14:51:01
U	PB170511BS - 1	LCSW	3.9015	16786	PPB	SMPL	-	7470A	12 Nov 2025 14:59:41
U	Q3574-02 - 1	304641-01 Liquid	0.0455	30	PPB	SMPL	-	7470A	12 Nov 2025 15:02:28
U	Q3604-01 - 1	S-1	0.0609	97	PPB	SMPL	-	7470A	12 Nov 2025 15:05:05
U	Q3604-02 - 1	S-2	0.0828	192	PPB	SMPL	-	7470A	12 Nov 2025 15:07:22
U	Q3604-02DUP - 1	S-2DUP	0.0738	153	PPB	SMPL	-	7470A	12 Nov 2025 15:09:39
U	Q3604-02MS - 1	S-2MS	3.9317	16917	PPB	SMPL	-	7470A	12 Nov 2025 15:14:14
U	CCV67 - 1	CCV67	5.0752	21886	PPB	SMPL	-	7470A	12 Nov 2025 15:16:29
U	CCB67 - 1	CCB67	0.0614	99	PPB	SMPL	-	7470A	12 Nov 2025 15:18:44
U	Q3604-02MSD - 1	S-2MSD	3.9031	16793	PPB	SMPL	-	7470A	12 Nov 2025 15:20:59
U	PB170490TB - 1	PB170490TB	0.0683	129	PPB	SMPL	-	7470A	12 Nov 2025 15:23:15
U	PB170493TB - 1	PB170493TB	0.0674	125	PPB	SMPL	-	7470A	12 Nov 2025 15:25:31
U	Q3604-02LX5 - 1		0.0492	46	PPB	SMPL	-	7470A	12 Nov 2025 15:27:47
U	Q3604-02A - 1		3.9031	16793	PPB	SMPL	-	7470A	12 Nov 2025 15:30:02
U	CCV68 - 1	CCV68	4.9633	21400	PPB	SMPL	-	7470A	12 Nov 2025 15:32:19
U	CCB68 - 1	CCB68	0.0490	45	PPB	SMPL	-	7470A	12 Nov 2025 15:34:36