

Data Path : Z:\svoasrv\HPCHEM1\BNA_F\Data\BF111125\
 Data File : BF144202.D
 Acq On : 11 Nov 2025 14:39
 Operator : RC/JU
 Sample : Q3584-05
 Misc :
 ALS Vial : 6 Sample Multiplier: 1

Instrument :
 BNA_F
 ClientSampleId :
 FB-2

Integration Parameters: rteint.p
 Integrator: RTE
 Smoothing : ON Filtering: 5
 Sampling : 1 Min Area: 3 % of largest Peak
 Start Thrs: 0.2 Max Peaks: 100
 Stop Thrs : 0 Peak Location: TOP

If leading or trailing edge < 100 prefer < Baseline drop else tangent >
 Peak separation: 5

Method : Z:\svoasrv\HPCHEM1\BNA_F\Methods\8270-BF110525.M
 Title : ASP BNA STANDARDS FOR 5 POINT CALIBRATION

Signal : TIC: BF144202.D\data.ms

peak #	R.T. min	first scan	max scan	last scan	PK TY	peak height	corr. area	corr. % max.	% of total
1	5.087	489	492	503	rVB	26852	40657	1.99%	0.370%
2	5.492	556	561	574	rBV	748094	1012528	49.65%	9.210%
3	6.498	727	732	751	rBV	509131	686540	33.66%	6.245%
4	6.875	791	796	803	rBV	288814	371459	18.21%	3.379%
5	7.433	885	891	902	rBV	870938	1154397	56.60%	10.501%
6	8.157	1008	1014	1029	rBV	362007	473153	23.20%	4.304%
7	8.375	1047	1051	1053	rBV	17795	25121	1.23%	0.229%
8	8.398	1053	1055	1062	rVB	21200	26921	1.32%	0.245%
9	9.233	1191	1197	1202	rBV	1603675	2039481	100.00%	18.552%
10	9.916	1307	1313	1321	rBV	402655	525722	25.78%	4.782%
11	10.704	1442	1447	1466	rBV	1004750	1310381	64.25%	11.920%
12	11.404	1561	1566	1573	rBV	386563	489922	24.02%	4.456%
13	12.992	1831	1836	1842	rBV	1403242	1879904	92.18%	17.100%
14	14.057	2009	2017	2025	rBV	309517	423772	20.78%	3.855%
15	14.457	2080	2085	2090	rBV2	26574	34988	1.72%	0.318%
16	15.539	2263	2269	2283	rBV	310800	498559	24.45%	4.535%

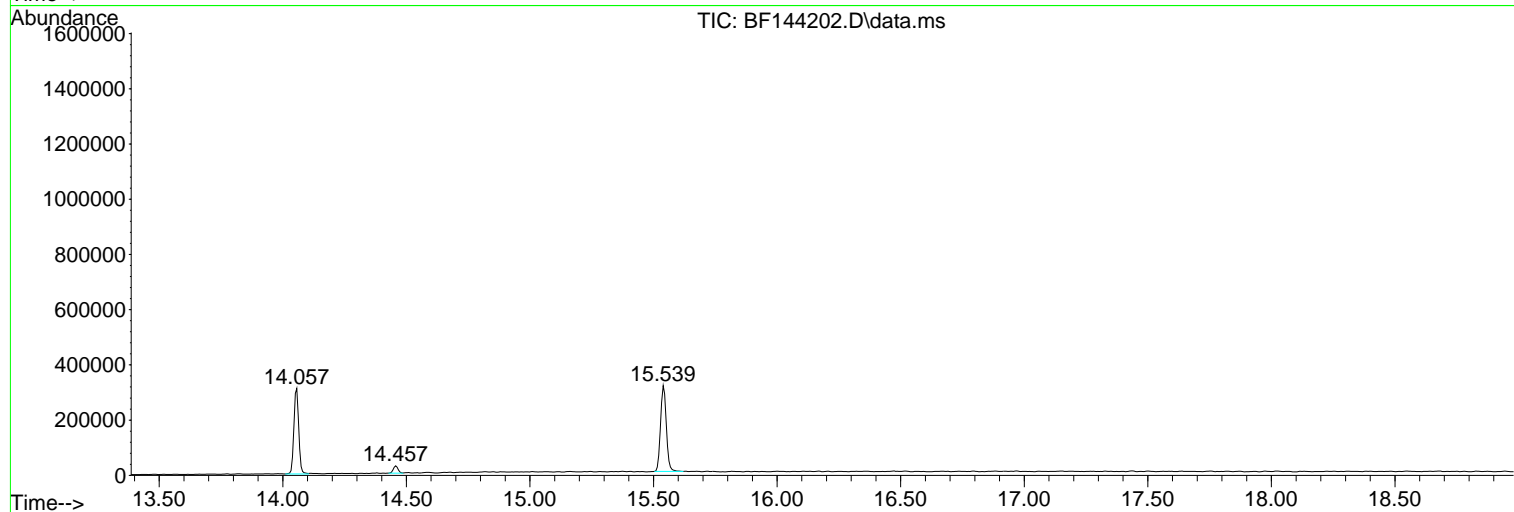
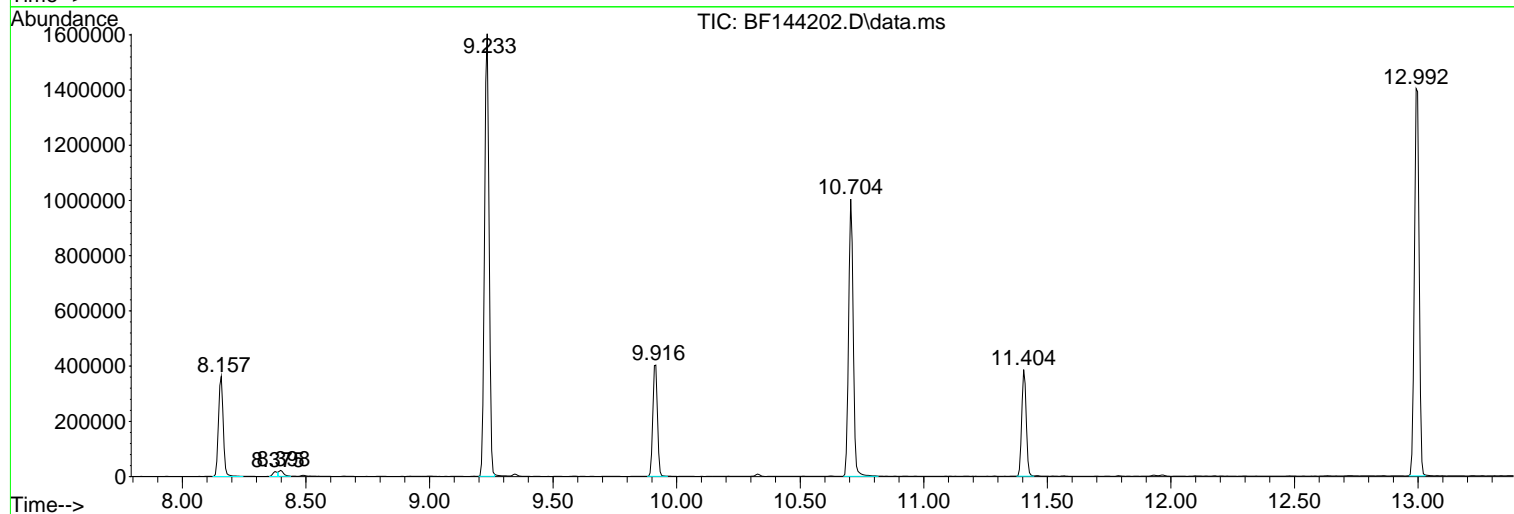
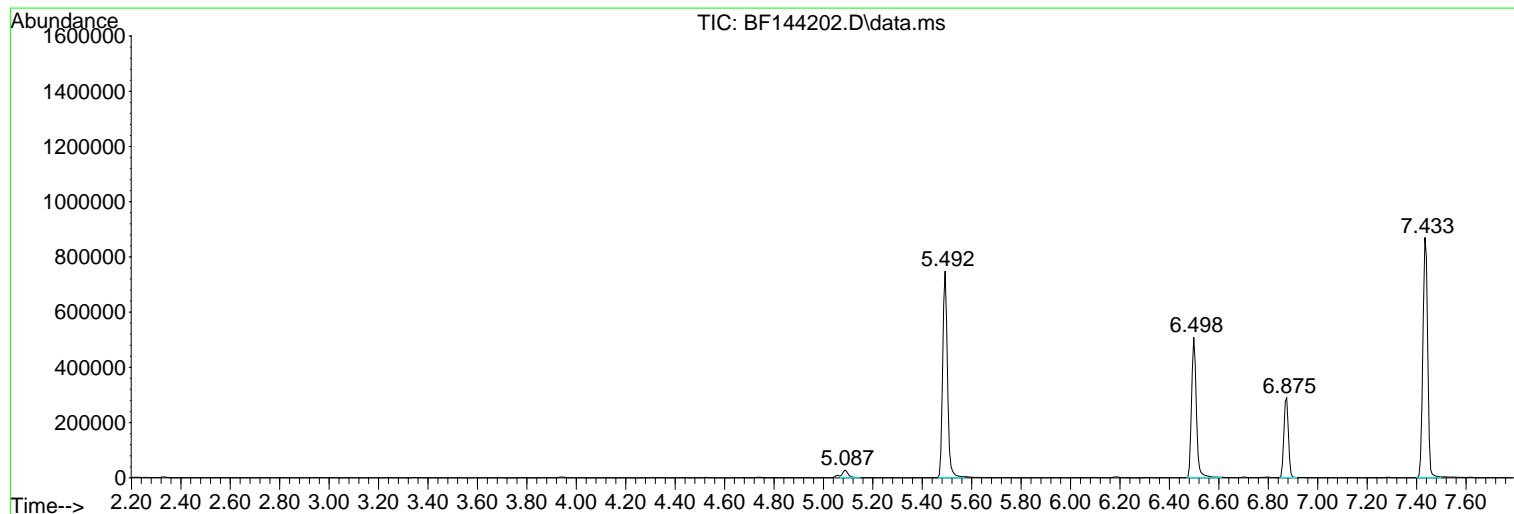
Sum of corrected areas: 10993505

Data Path : Z:\svoasrv\HPCHEM1\BNA_F\Data\BF111125\
Data File : BF144202.D
Acq On : 11 Nov 2025 14:39
Operator : RC/JU
Sample : Q3584-05
Misc :
ALS Vial : 6 Sample Multiplier: 1

Instrument :
BNA_F
ClientSampleId :
FB-2

Quant Method : Z:\svoasrv\HPCHEM1\BNA_F\Methods\8270-BF110525.M
Quant Title : ASP BNA STANDARDS FOR 5 POINT CALIBRATION

TIC Library : C:\Database\NIST20.L
TIC Integration Parameters: LSCINT.P



Data Path : Z:\svoasrv\HPCHEM1\BNA_F\Data\BF111125\
Data File : BF144202.D
Acq On : 11 Nov 2025 14:39
Operator : RC/JU
Sample : Q3584-05
Misc :
ALS Vial : 6 Sample Multiplier: 1

Instrument :
BNA_F
ClientSampleId :
FB-2

Quant Method : Z:\svoasrv\HPCHEM1\BNA_F\Methods\8270-BF110525.M
Quant Title : ASP BNA STANDARDS FOR 5 POINT CALIBRATION

TIC Library : C:\Database\NIST20.L
TIC Integration Parameters: LSCINT.P

No Library Search Compounds Detected

Data Path : Z:\svoasrv\HPCHEM1\BNA_F\Data\BF111125\
Data File : BF144202.D
Acq On : 11 Nov 2025 14:39
Operator : RC/JU
Sample : Q3584-05
Misc :
ALS Vial : 6 Sample Multiplier: 1

Instrument :
BNA_F
ClientSampleId :
FB-2

Quant Method : Z:\svoasrv\HPCHEM1\BNA_F\Methods\8270-BF110525.M
Quant Title : ASP BNA STANDARDS FOR 5 POINT CALIBRATION

TIC Library : C:\Database\NIST20.L
TIC Integration Parameters: LSCINT.P

TIC Top Hit name	RT	EstConc	Units	Response	#	RT	Resp	Conc
------------------	----	---------	-------	----------	---	----	------	------

|--Internal Standard--|