

Data Path : Z:\svoasrv\HPCHEM1\BNA_F\Data\BF111125\
 Data File : BF144204.D
 Acq On : 11 Nov 2025 15:38
 Operator : RC/JU
 Sample : Q3584-03
 Misc :
 ALS Vial : 8 Sample Multiplier: 1

Instrument :
 BNA_F
 ClientSampleId :
 SW-3

Integration Parameters: rteint.p
 Integrator: RTE
 Smoothing : ON Filtering: 5
 Sampling : 1 Min Area: 3 % of largest Peak
 Start Thrs: 0.2 Max Peaks: 100
 Stop Thrs : 0 Peak Location: TOP

If leading or trailing edge < 100 prefer < Baseline drop else tangent >
 Peak separation: 5

Method : Z:\svoasrv\HPCHEM1\BNA_F\Methods\8270-BF110525.M
 Title : ASP BNA STANDARDS FOR 5 POINT CALIBRATION

Signal : TIC: BF144204.D\data.ms

peak #	R.T. min	first scan	max scan	last scan	PK TY	peak height	corr. area	corr. % max.	% of total
1	5.493	556	561	573	rBV	607908	835868	49.03%	8.990%
2	6.498	727	732	757	rBV	473187	652796	38.29%	7.021%
3	6.875	791	796	808	rVB	252942	322581	18.92%	3.469%
4	7.434	885	891	904	rBV	707073	925240	54.27%	9.951%
5	8.157	1009	1014	1029	rBV	297592	389086	22.82%	4.185%
6	9.233	1191	1197	1207	rBV	1237130	1601042	93.91%	17.220%
7	9.916	1307	1313	1326	rVB	311651	412897	24.22%	4.441%
8	10.328	1379	1383	1388	rVB	20042	23695	1.39%	0.255%
9	10.628	1429	1434	1442	rBV	30223	39252	2.30%	0.422%
10	10.704	1442	1447	1459	rBV	762623	987022	57.90%	10.616%
11	11.404	1561	1566	1573	rBV	300610	384033	22.53%	4.130%
12	11.927	1651	1655	1666	rBV7	10502	21127	1.24%	0.227%
13	12.992	1831	1836	1842	rBV	1283612	1704834	100.00%	18.336%
14	14.057	2009	2017	2024	rBV	340780	465218	27.29%	5.004%
15	15.539	2263	2269	2283	rBV	330139	533138	31.27%	5.734%

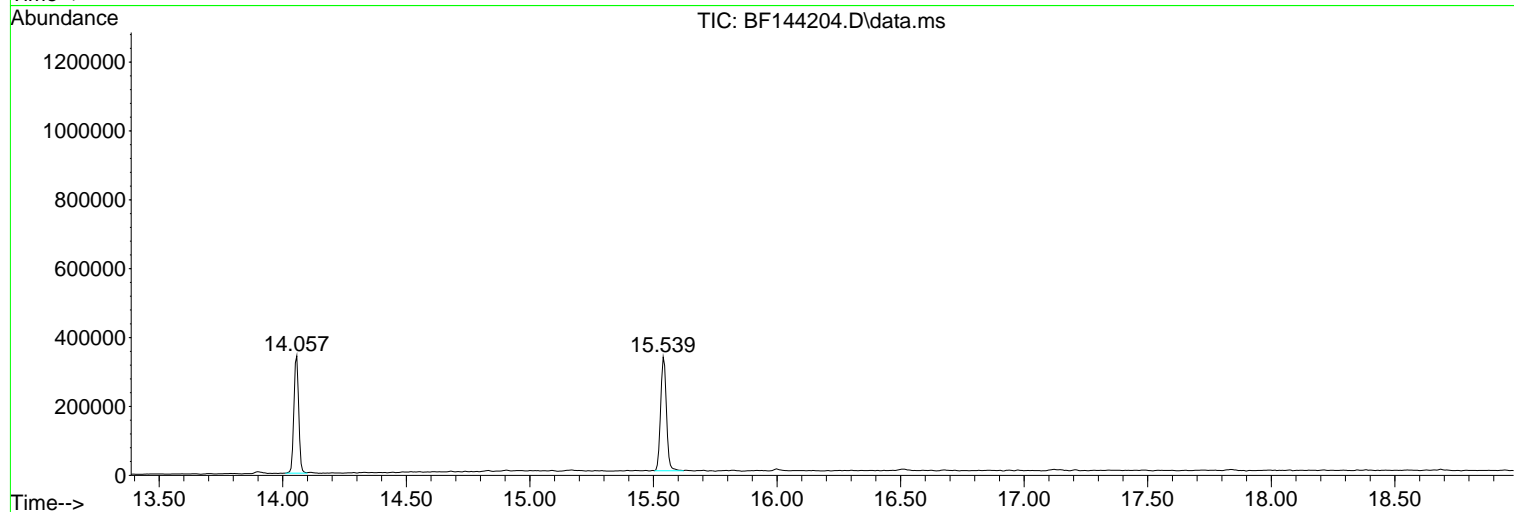
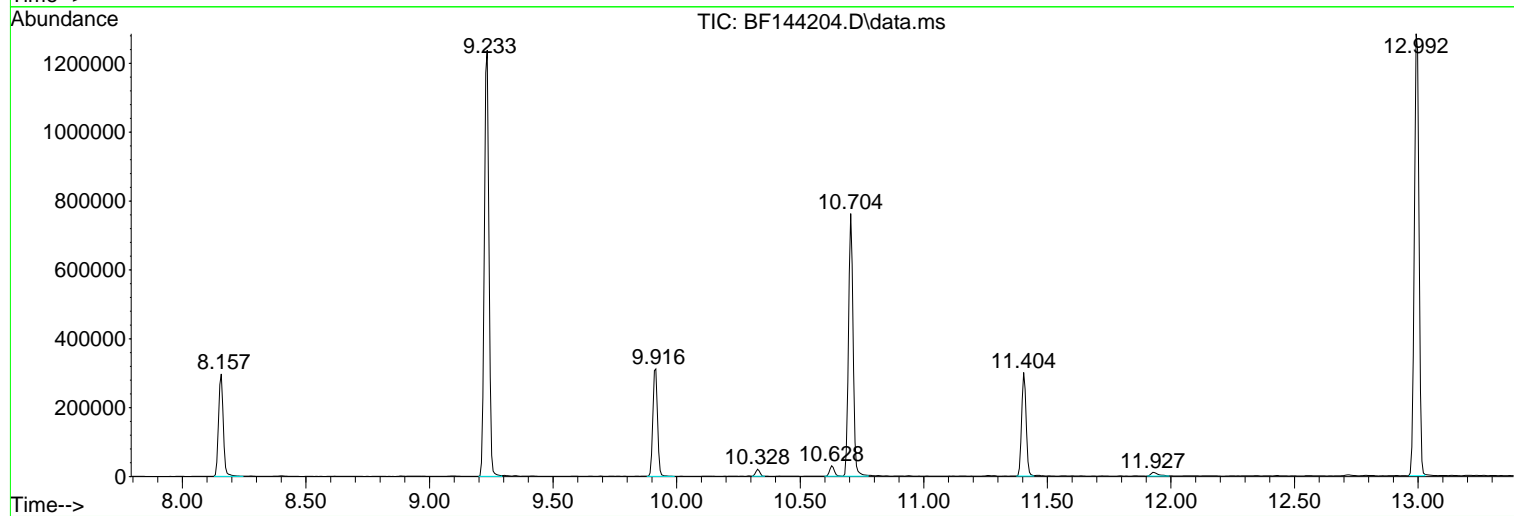
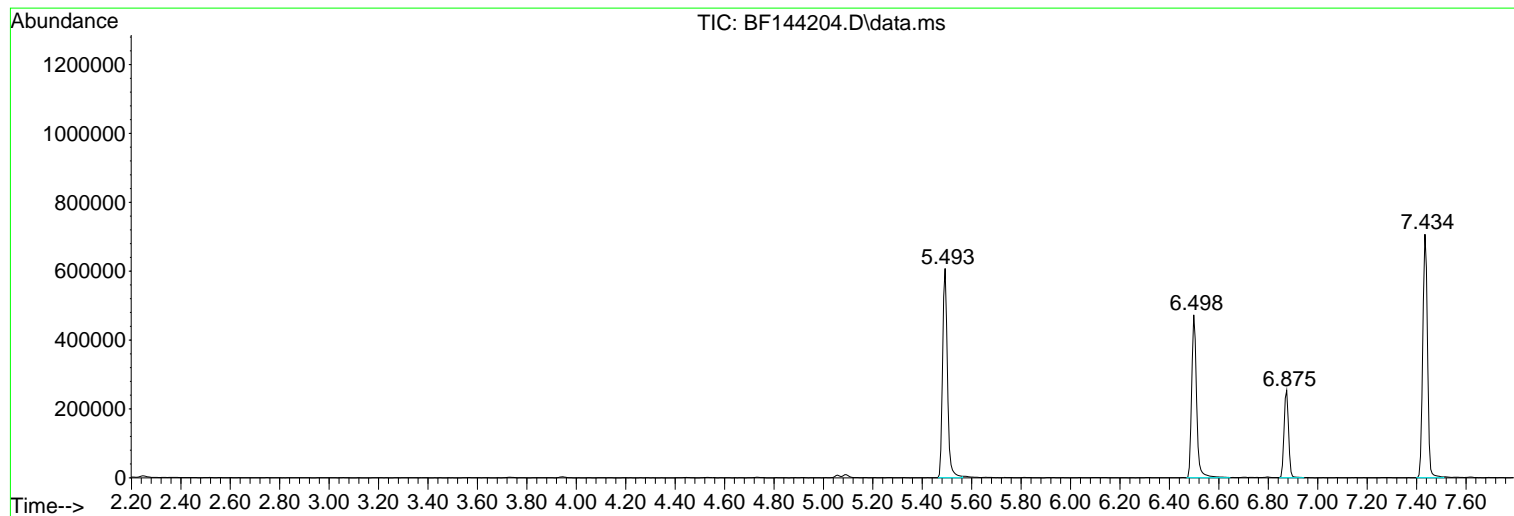
Sum of corrected areas: 9297829

Data Path : Z:\svoasrv\HPCHEM1\BNA_F\Data\BF111125\
Data File : BF144204.D
Acq On : 11 Nov 2025 15:38
Operator : RC/JU
Sample : Q3584-03
Misc :
ALS Vial : 8 Sample Multiplier: 1

Instrument :
BNA_F
ClientSampleId :
SW-3

Quant Method : Z:\svoasrv\HPCHEM1\BNA_F\Methods\8270-BF110525.M
Quant Title : ASP BNA STANDARDS FOR 5 POINT CALIBRATION

TIC Library : C:\Database\NIST20.L
TIC Integration Parameters: LSCINT.P



Data Path : Z:\svoasrv\HPCHEM1\BNA_F\Data\BF111125\
Data File : BF144204.D
Acq On : 11 Nov 2025 15:38
Operator : RC/JU
Sample : Q3584-03
Misc :
ALS Vial : 8 Sample Multiplier: 1

Instrument :
BNA_F
ClientSampleId :
SW-3

Quant Method : Z:\svoasrv\HPCHEM1\BNA_F\Methods\8270-BF110525.M
Quant Title : ASP BNA STANDARDS FOR 5 POINT CALIBRATION

TIC Library : C:\Database\NIST20.L
TIC Integration Parameters: LSCINT.P

No Library Search Compounds Detected

Data Path : Z:\svoasrv\HPCHEM1\BNA_F\Data\BF111125\
Data File : BF144204.D
Acq On : 11 Nov 2025 15:38
Operator : RC/JU
Sample : Q3584-03
Misc :
ALS Vial : 8 Sample Multiplier: 1

Instrument :
BNA_F
ClientSampleId :
SW-3

Quant Method : Z:\svoasrv\HPCHEM1\BNA_F\Methods\8270-BF110525.M
Quant Title : ASP BNA STANDARDS FOR 5 POINT CALIBRATION

TIC Library : C:\Database\NIST20.L
TIC Integration Parameters: LSCINT.P

TIC Top Hit name	RT	EstConc	Units	Response	#	RT	Resp	Conc
------------------	----	---------	-------	----------	---	----	------	------

|--Internal Standard--|