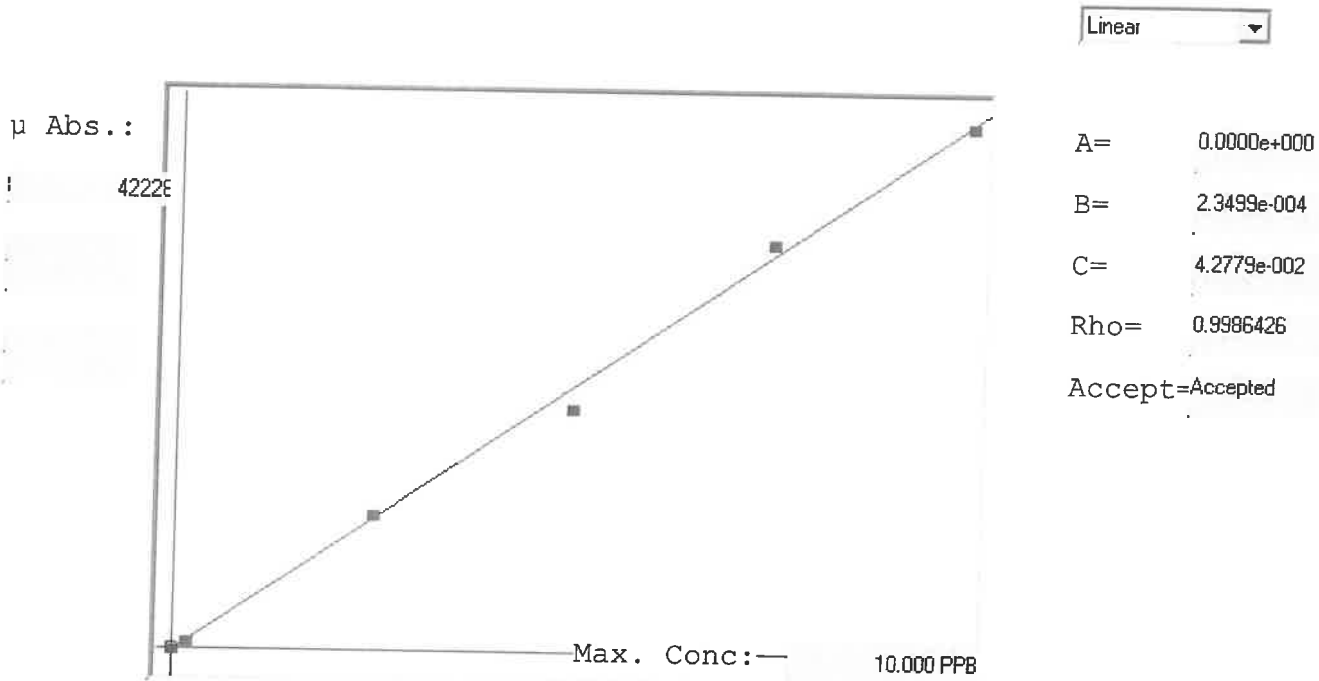


~~LB137914~~ LB137914  
INSTRUMENT ID: CV1

Reviewed By: jaswal  
On: 11/17/2025 5:31:02 PM  
Inst Id: CV1  
LB: LB137914

7470A



Std ID	Conc.	Calc.	Dev.	Mean	SD or %RSD	Rep 1	Rep 2	Rep 3	Rep 4	Rep 5
0.0	0.000	0.068	0.068	108	0.000	108	0			
0.2	0.200	0.211	0.011	716	0.0 %	716	0			
2.5	2.500	2.602	0.102	10889	0.0 %	10889	0			
5.0	5.000	4.615	-0.385	19456	0.0 %	19456				
7.5	7.500	7.739	0.239	32750	0.0 %	32750				
10.0	10.000	9.966	-0.034	42228	0.0 %	42228				

# LB137914 INSTRUMENT ID: CV1

Method: 7470A

Operator: Admin

Date of Analysis: 17 Nov 2025 12:21:30

Type	Sample ID	Extended ID	Conc.	μ Abs.	Units	Type	Std Conc	Method	Date
S	0.0 - 1	5.0	-	108	PPB	Std	0.0000	7470A	17 Nov 2025 12:36:53
S	0.2 - 1	5.02	-	716	PPB	Std	0.2000	7470A	17 Nov 2025 12:39:10
S	2.5 - 1	52.5	-	10889	PPB	Std	2.5000	7470A	17 Nov 2025 12:41:27
S	5.0 - 1	5.50	-	19456	PPB	Std	5.0000	7470A	17 Nov 2025 12:43:44
S	7.5 - 1	57.5	-	32750	PPB	Std	7.5000	7470A	17 Nov 2025 12:48:51
S	10.0 - 1	510.0	-	42228	PPB	Std	10.0000	7470A	17 Nov 2025 12:51:06
U	ICV117 - 1	ICV117	4.1943	17667	PPB	SMPL	-7470A		17 Nov 2025 12:54:26
U	ICB117 - 1	ICB117	-0.0037	-198	PPB	SMPL	-7470A		17 Nov 2025 12:56:41
U	CCV01 - 1	CCV01	5.0349	21244	PPB	SMPL	-7470A		17 Nov 2025 13:06:44
U	CCB01 - 1	CCB01	0.0665	101	PPB	SMPL	-7470A		17 Nov 2025 13:08:59
U	CRA - 1	CRA	0.2155	735	PPB	SMPL	-7470A		17 Nov 2025 13:11:15
U	HighStd - 1	HighStd	9.9302	42076	PPB	SMPL	-7470A		17 Nov 2025 13:13:30
U	ChkStd - 1	ChkStd	6.8198	28840	PPB	SMPL	-7470A		17 Nov 2025 13:15:46
U	PB170561BL - 1	PBW	0.0249	-76	PPB	SMPL	-7470A		17 Nov 2025 13:20:42
U	PB170561BS - 1	LCSW	3.8672	16275	PPB	SMPL	-7470A		17 Nov 2025 13:22:58
U	Q3616-05 - 1	Composite	4.2620	17955	PPB	SMPL	-7470A		17 Nov 2025 13:25:14
U	Q3620-01 - 1	1010-A	0.1708	545	PPB	SMPL	-7470A		17 Nov 2025 13:27:30
U	Q3620-02 - 1	1010-B	0.0978	234	PPB	SMPL	-7470A		17 Nov 2025 13:29:49
U	Q3620-02DUP - 1	1010-BDUP	0.0773	147	PPB	SMPL	-7470A		17 Nov 2025 13:32:06
U	Q3620-02MS - 1	1010-BMS	2.8796	12072	PPB	SMPL	-7470A		17 Nov 2025 13:34:21
U	CCV02 - 1	CCV02	5.0201	21181	PPB	SMPL	-7470A		17 Nov 2025 13:39:18
U	CCB02 - 1	CCB02	0.0595	71	PPB	SMPL	-7470A		17 Nov 2025 13:41:33
U	Q3620-02MSD - 1	1010-BMSD	3.0817	12932	PPB	SMPL	-7470A		17 Nov 2025 13:43:48
U	Q3640-04 - 1	LAW-25-0183	0.1631	512	PPB	SMPL	-7470A		17 Nov 2025 13:46:04
U	Q3620-02LX5 - 1		0.0440	5	PPB	SMPL	-7470A		17 Nov 2025 13:48:20
U	Q3620-02A - 1		4.1003	17267	PPB	SMPL	-7470A		17 Nov 2025 13:50:36
U	CCV03 - 1	CCV03	5.1068	21550	PPB	SMPL	-7470A		17 Nov 2025 13:52:51
U	CCB03 - 1	CCB03	0.0555	54	PPB	SMPL	-7470A		17 Nov 2025 13:55:07