

Data Path : Z:\svoasrv\HPCHEM1\BNA_G\Data\BG111725\
 Data File : BG064795.D
 Acq On : 17 Nov 2025 22:09
 Operator : RC/JU
 Sample : Q3649-08
 Misc :
 ALS Vial : 13 Sample Multiplier: 1

Instrument :
 BNA_G
 ClientSampleId :
 B3-0.0-0.5-20251114

Integration Parameters: rteint.p
 Integrator: RTE
 Smoothing : ON Filtering: 5
 Sampling : 1 Min Area: 3 % of largest Peak
 Start Thrs: 0.2 Max Peaks: 100
 Stop Thrs : 0 Peak Location: TOP

If leading or trailing edge < 100 prefer < Baseline drop else tangent >
 Peak separation: 5

Method : Z:\svoasrv\HPCHEM1\BNA_G\Methods\8270-BG111225.M
 Title : ASP BNA STANDARDS FOR 5 POINT CALIBRATION

Signal : TIC: BG064795.D\data.ms

peak #	R.T. min	first scan	max scan	last scan	PK TY	peak height	corr. area	corr. % max.	% of total
1	3.141	3	9	16	rBV4	24217	54201	1.54%	0.366%
2	3.217	16	22	37	rVB	498686	845818	23.97%	5.716%
3	5.703	437	445	456	rBV	582903	979510	27.75%	6.619%
4	7.307	710	718	735	rBV	578319	1045738	29.63%	7.067%
5	8.164	857	864	871	rBV	121370	207665	5.88%	1.403%
6	9.322	1052	1061	1073	rBV	357337	656332	18.60%	4.435%
7	10.979	1336	1343	1354	rBV	149379	288408	8.17%	1.949%
8	13.405	1749	1756	1778	rBV	1043189	1691981	47.94%	11.434%
9	14.774	1981	1989	2003	rVB	270649	444816	12.60%	3.006%
10	16.108	2210	2216	2223	rBV	104975	164770	4.67%	1.113%
11	16.249	2233	2240	2259	rBV	998090	1648819	46.72%	11.142%
12	17.500	2446	2453	2464	rBV2	369731	611361	17.32%	4.131%
13	17.865	2510	2515	2525	rBV2	20297	38825	1.10%	0.262%
14	18.370	2595	2601	2613	rBV2	84796	158220	4.48%	1.069%
15	19.898	2856	2861	2871	rBV	106079	216873	6.15%	1.466%
16	20.092	2887	2894	2901	rBV	2564984	3529229	100.00%	23.849%
17	21.384	3109	3114	3124	rVB2	104582	173071	4.90%	1.170%
18	21.748	3169	3176	3188	rBV	506689	907500	25.71%	6.132%
19	23.617	3488	3494	3499	rBV5	42987	79739	2.26%	0.539%
20	24.140	3578	3583	3591	rVB4	45501	111105	3.15%	0.751%
21	25.009	3721	3731	3749	rVB	274127	868887	24.62%	5.871%
22	26.214	3929	3936	3945	rVB4	27228	75556	2.14%	0.511%

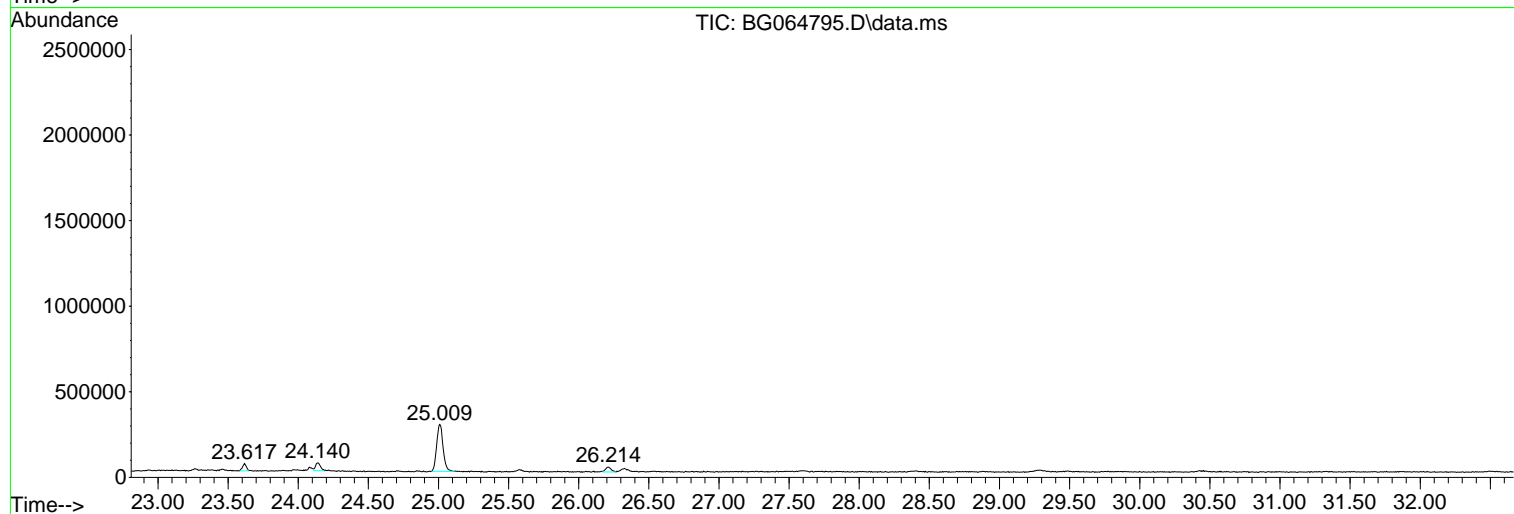
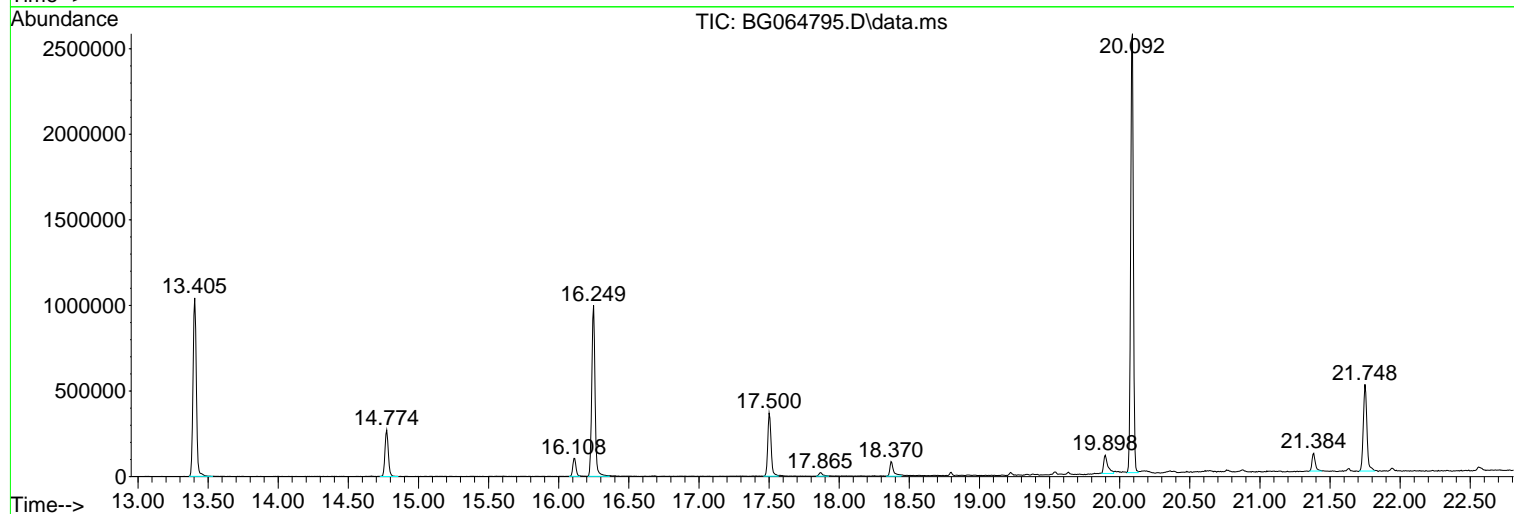
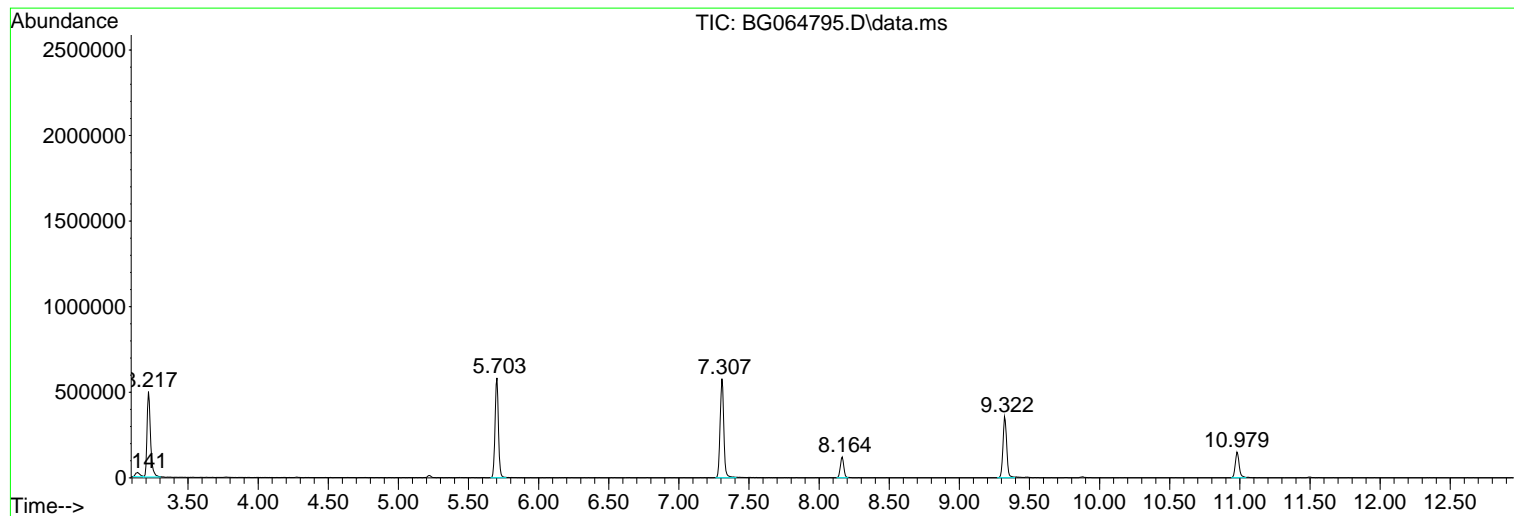
Sum of corrected areas: 14798424

Data Path : Z:\svoasrv\HPCHEM1\BNA_G\Data\BG111725\
Data File : BG064795.D
Acq On : 17 Nov 2025 22:09
Operator : RC/JU
Sample : Q3649-08
Misc :
ALS Vial : 13 Sample Multiplier: 1

Instrument :
BNA_G
ClientSampleId :
B3-0.0-0.5-20251114

Quant Method : Z:\svoasrv\HPCHEM1\BNA_G\Methods\8270-BG111225.M
Quant Title : ASP BNA STANDARDS FOR 5 POINT CALIBRATION

TIC Library : C:\Database\NIST20.L
TIC Integration Parameters: LSCINT.P



Data Path : Z:\svoasrv\HPCHEM1\BNA_G\Data\BG111725\
 Data File : BG064795.D
 Acq On : 17 Nov 2025 22:09
 Operator : RC/JU
 Sample : Q3649-08
 Misc :
 ALS Vial : 13 Sample Multiplier: 1

Instrument :
 BNA_G
 ClientSampleId :
 B3-0.0-0.5-20251114

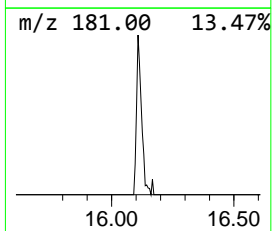
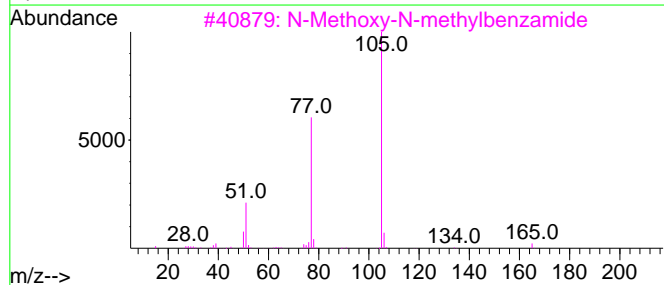
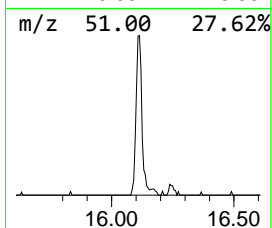
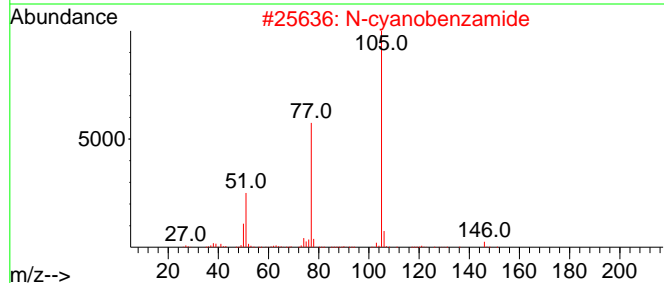
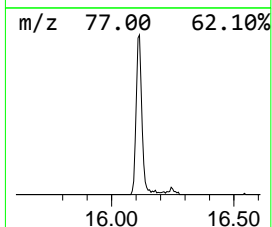
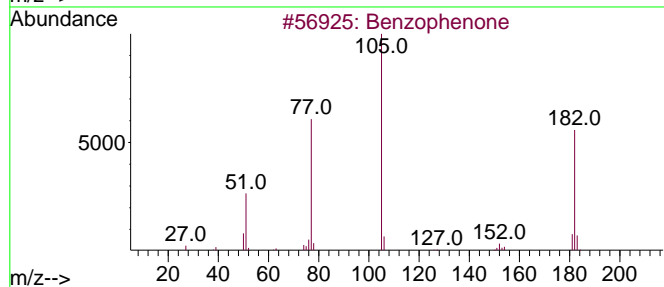
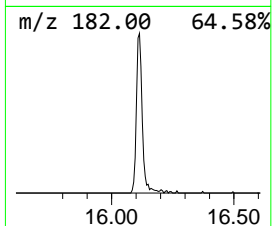
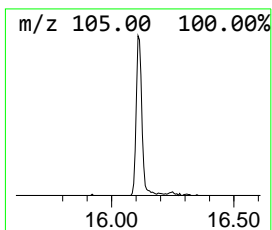
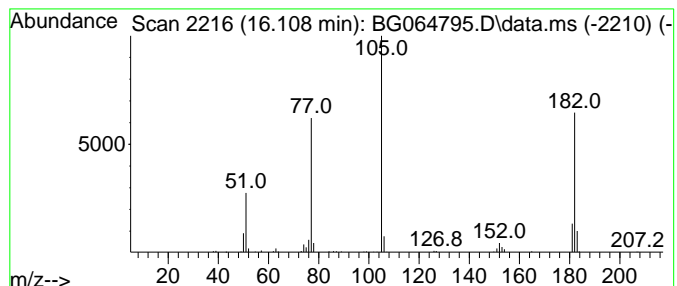
Quant Method : Z:\svoasrv\HPCHEM1\BNA_G\Methods\8270-BG111225.M
 Quant Title : ASP BNA STANDARDS FOR 5 POINT CALIBRATION

TIC Library : C:\Database\NIST20.L
 TIC Integration Parameters: LSCINT.P

 Peak Number 3 Benzophenone Concentration Rank 2

R.T.	EstConc	Area	Relative to ISTD	R.T.
16.108	7.41 ng	164770	Acenaphthene-d10	14.774

Hit#	of	Tentative ID	MW	MolForm	CAS#	Qual
1	5	Benzophenone	182	C13H10O	000119-61-9	96
2		N-cyanobenzamide	146	C8H6N2O	015150-25-1	47
3		N-Methoxy-N-methylbenzamide	165	C9H11NO2	006919-61-5	47
4		1,2-Propanedione, 1-phenyl-	148	C9H8O2	000579-07-7	47
5		1-Propanone, 2-bromo-1-phenyl-	212	C9H9BrO	002114-00-3	47



Data Path : Z:\svoasrv\HPCHEM1\BNA_G\Data\BG111725\
 Data File : BG064795.D
 Acq On : 17 Nov 2025 22:09
 Operator : RC/JU
 Sample : Q3649-08
 Misc :
 ALS Vial : 13 Sample Multiplier: 1

Instrument :
 BNA_G
 ClientSampleId :
 B3-0.0-0.5-20251114

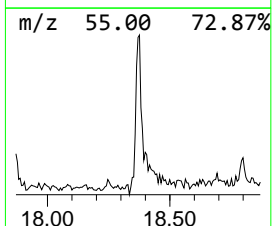
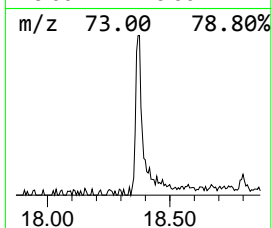
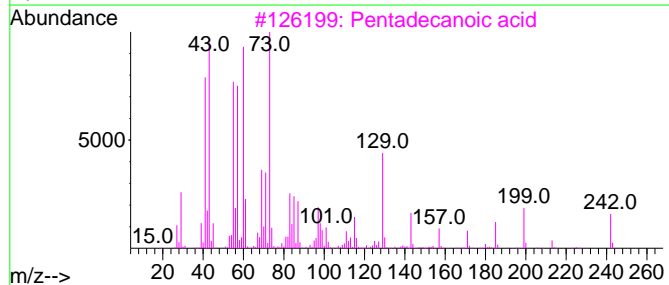
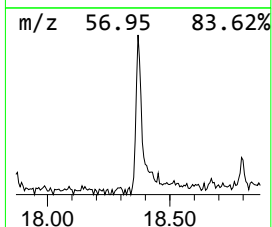
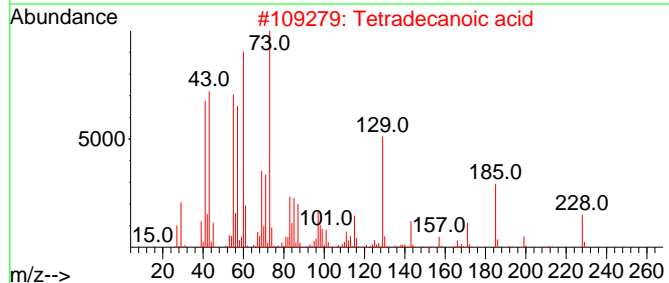
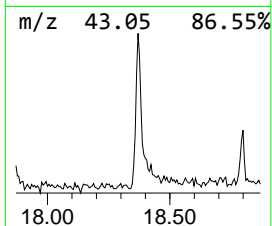
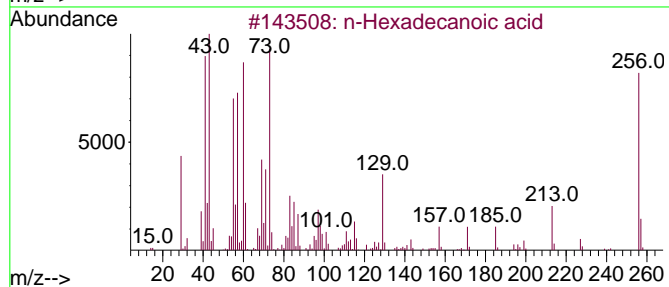
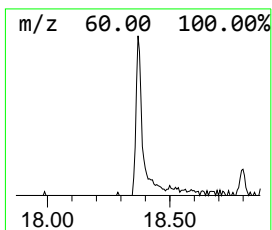
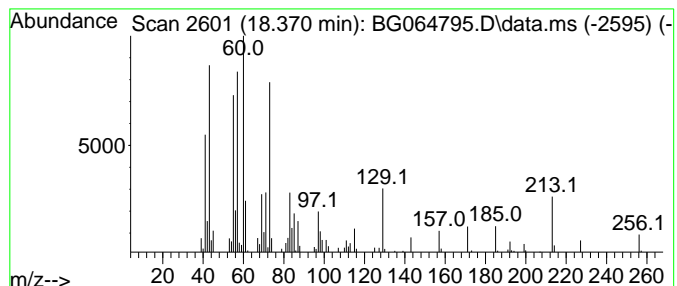
Quant Method : Z:\svoasrv\HPCHEM1\BNA_G\Methods\8270-BG111225.M
 Quant Title : ASP BNA STANDARDS FOR 5 POINT CALIBRATION

TIC Library : C:\Database\NIST20.L
 TIC Integration Parameters: LSCINT.P

 Peak Number 4 n-Hexadecanoic acid Concentration Rank 4

R.T.	EstConc	Area	Relative to ISTD	R.T.
18.370	5.18 ng	158220	Phenanthrene-d10	17.500

Hit#	of	5	Tentative ID	MW	MolForm	CAS#	Qual
1			n-Hexadecanoic acid	256	C16H32O2	000057-10-3	97
2			Tetradecanoic acid	228	C14H28O2	000544-63-8	59
3			Pentadecanoic acid	242	C15H30O2	001002-84-2	58
4			Nonanoic acid	158	C9H18O2	000112-05-0	53
5			Tridecanoic acid	214	C13H26O2	000638-53-9	50



Data Path : Z:\svoasrv\HPCHEM1\BNA_G\Data\BG111725\
 Data File : BG064795.D
 Acq On : 17 Nov 2025 22:09
 Operator : RC/JU
 Sample : Q3649-08
 Misc :
 ALS Vial : 13 Sample Multiplier: 1

Instrument :
 BNA_G
 ClientSampleId :
 B3-0.0-0.5-20251114

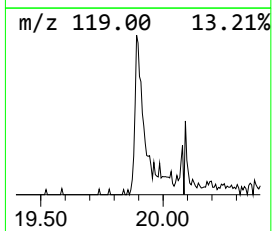
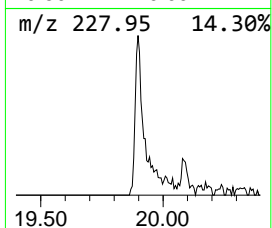
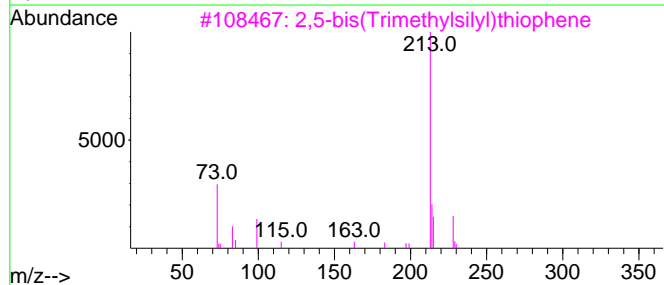
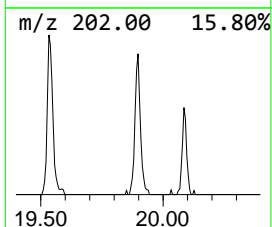
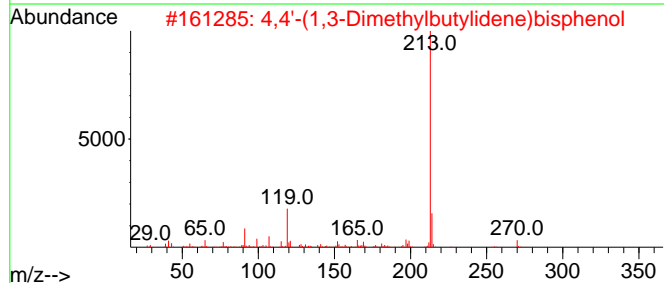
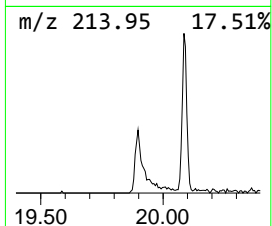
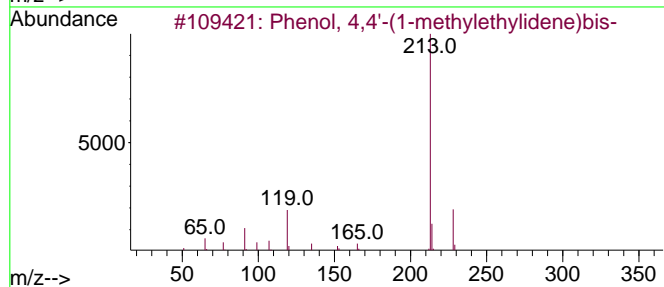
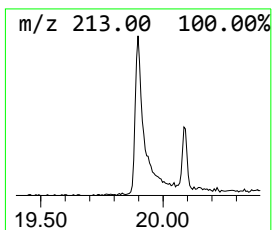
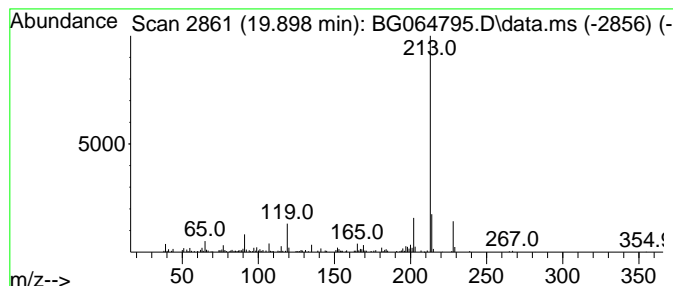
Quant Method : Z:\svoasrv\HPCHEM1\BNA_G\Methods\8270-BG11225.M
 Quant Title : ASP BNA STANDARDS FOR 5 POINT CALIBRATION

TIC Library : C:\Database\NIST20.L
 TIC Integration Parameters: LSCINT.P

 Peak Number 5 Phenol, 4,4'-(1-methylethyl... Concentration Rank 5

R.T.	EstConc	Area	Relative to ISTD	R.T.
19.898	4.78 ng	216873	Chrysene-d12	21.748

Hit#	of	5	Tentative ID	MW	MolForm	CAS#	Qual
1			Phenol, 4,4'-(1-methylethylidene...	228	C15H16O2	000080-05-7	90
2			4,4'-(1,3-Dimethylbutylidene)bis...	270	C18H22O2	006807-17-6	59
3			2,5-bis(Trimethylsilyl)thiophene	228	C10H20SSi2	017906-71-7	53
4			2,2-Bis-(4-hydroxyphenyl)-butane	242	C16H18O2	000077-40-7	53
5			1-Methyl-1-n-octyloxy-1-silacycl...	228	C13H28OSi	1010216-91-0	42



Data Path : Z:\svoasrv\HPCHEM1\BNA_G\Data\BG111725\
 Data File : BG064795.D
 Acq On : 17 Nov 2025 22:09
 Operator : RC/JU
 Sample : Q3649-08
 Misc :
 ALS Vial : 13 Sample Multiplier: 1

Instrument :
 BNA_G
 ClientSampleId :
 B3-0.0-0.5-20251114

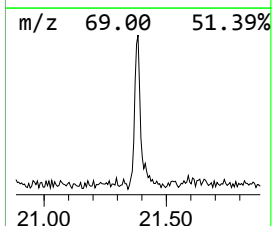
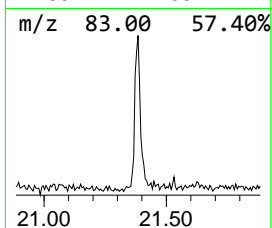
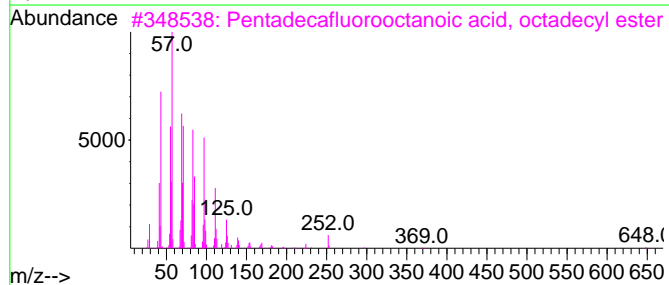
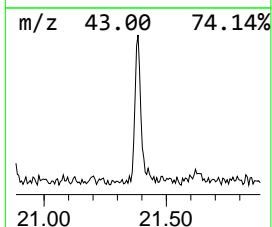
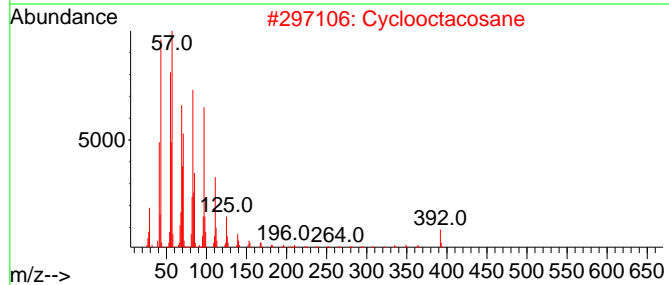
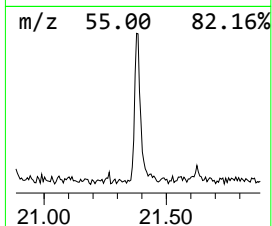
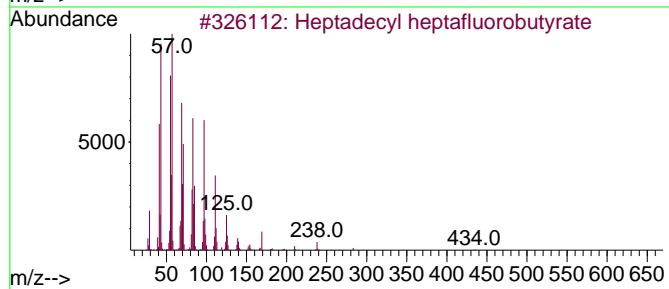
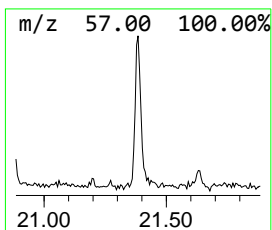
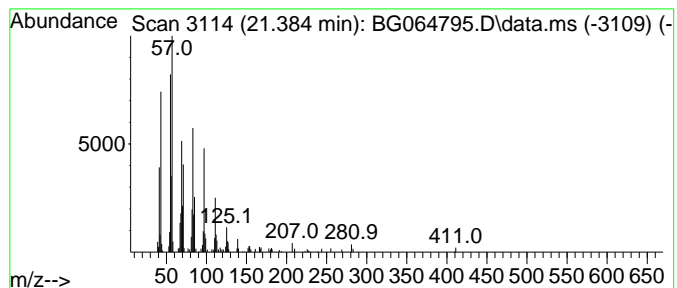
Quant Method : Z:\svoasrv\HPCHEM1\BNA_G\Methods\8270-BG11225.M
 Quant Title : ASP BNA STANDARDS FOR 5 POINT CALIBRATION

TIC Library : C:\Database\NIST20.L
 TIC Integration Parameters: LSCINT.P

 Peak Number 6 Heptadecyl heptafluorobutyrate Concentration Rank 6

R.T.	EstConc	Area	Relative to ISTD	R.T.
21.384	3.81 ng	173071	Chrysene-d12	21.748

Hit#	of	5	Tentative ID	MW	MolForm	CAS#	Qual
1			Heptadecyl heptafluorobutyrate	452	C21H35F7O2	959085-66-6	91
2			Cyclooctacosane	392	C28H56	000297-24-5	91
3			Pentadecafluorooctanoic acid, oc...	666	C26H37F15O2	1000406-04-8	91
4			Dodecane, 6-cyclohexyl-	252	C18H36	013151-86-5	91
5			Docosyl heptafluorobutyrate	522	C26H45F7O2	1000351-83-1	91



Data Path : Z:\svoasrv\HPCHEM1\BNA_G\Data\BG111725\
 Data File : BG064795.D
 Acq On : 17 Nov 2025 22:09
 Operator : RC/JU
 Sample : Q3649-08
 Misc :
 ALS Vial : 13 Sample Multiplier: 1

Instrument :
 BNA_G
 ClientSampleId :
 B3-0.0-0.5-20251114

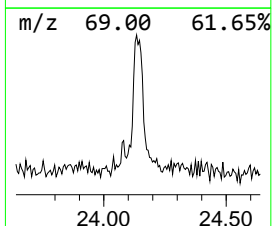
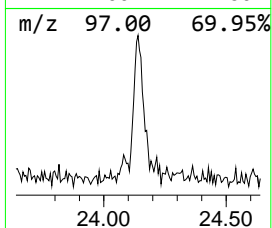
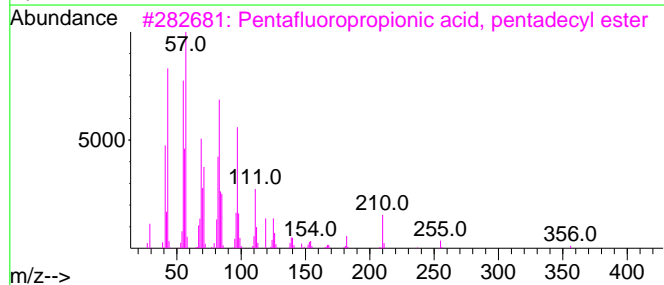
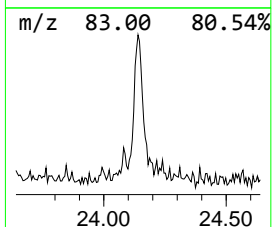
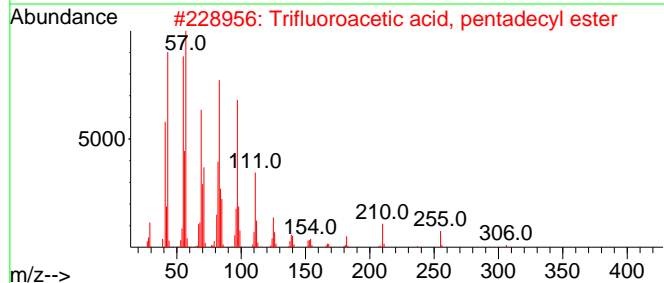
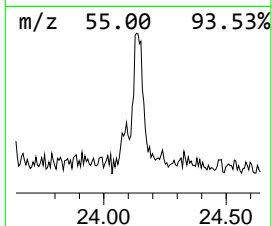
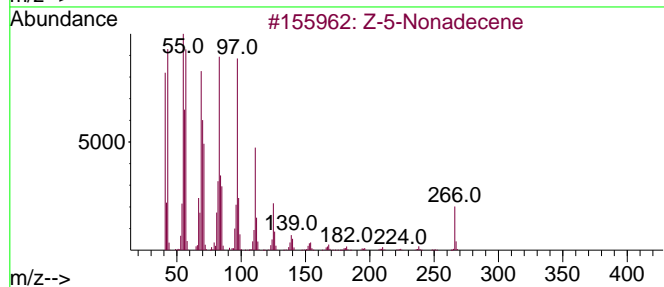
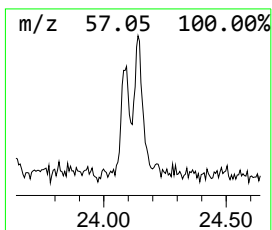
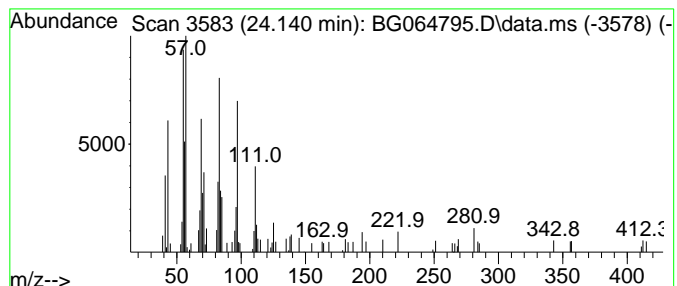
Quant Method : Z:\svoasrv\HPCHEM1\BNA_G\Methods\8270-BG11225.M
 Quant Title : ASP BNA STANDARDS FOR 5 POINT CALIBRATION

TIC Library : C:\Database\NIST20.L
 TIC Integration Parameters: LSCINT.P

 Peak Number 7 Z-5-Nonadecene Concentration Rank 7

R.T.	EstConc	Area	Relative to ISTD	R.T.
24.140	2.56 ng	111105	Perylene-d12	25.009

Hit#	of	5	Tentative ID	MW	MolForm	CAS#	Qual
1			Z-5-Nonadecene	266	C19H38	1000131-11-8	90
2			Trifluoroacetic acid, pentadecyl...	324	C17H31F3O2	959010-23-2	81
3			Pentafluoropropionic acid, penta...	374	C18H31F5O2	959092-08-1	81
4			9-Nonadecene	266	C19H38	031035-07-1	81
5			Chloroacetic acid, pentadecyl ester	304	C17H33ClO2	070301-47-2	76



Data Path : Z:\svoasrv\HPCHEM1\BNA_G\Data\BG111725\
Data File : BG064795.D
Acq On : 17 Nov 2025 22:09
Operator : RC/JU
Sample : Q3649-08
Misc :
ALS Vial : 13 Sample Multiplier: 1

Instrument :
BNA_G
ClientSampleId :
B3-0.0-0.5-20251114

Quant Method : Z:\svoasrv\HPCHEM1\BNA_G\Methods\8270-BG111225.M
Quant Title : ASP BNA STANDARDS FOR 5 POINT CALIBRATION

TIC Library : C:\Database\NIST20.L
TIC Integration Parameters: LSCINT.P

TIC Top Hit name	RT	EstConc	Units	Response	--Internal Standard--			
					#	RT	Resp	Conc
Benzophenone	16.108	7.4	ng	164770	3	14.774	444816	20.0
n-Hexadecanoic ...	18.370	5.2	ng	158220	4	17.500	611361	20.0
Phenol, 4,4'-(1...	19.898	4.8	ng	216873	5	21.748	907500	20.0
Heptadecyl hept...	21.384	3.8	ng	173071	5	21.748	907500	20.0
Z-5-Nonadecene	24.140	2.6	ng	111105	6	25.009	868887	20.0